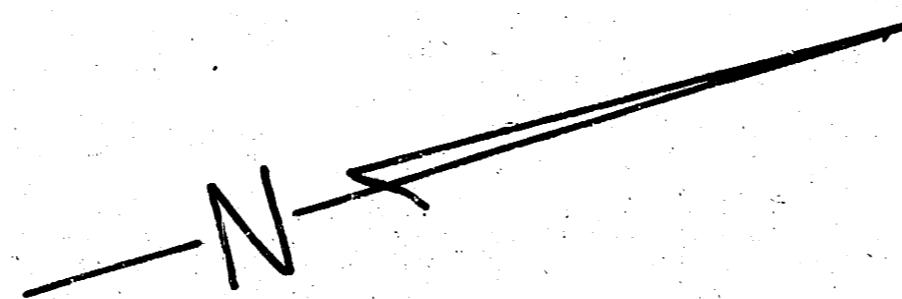
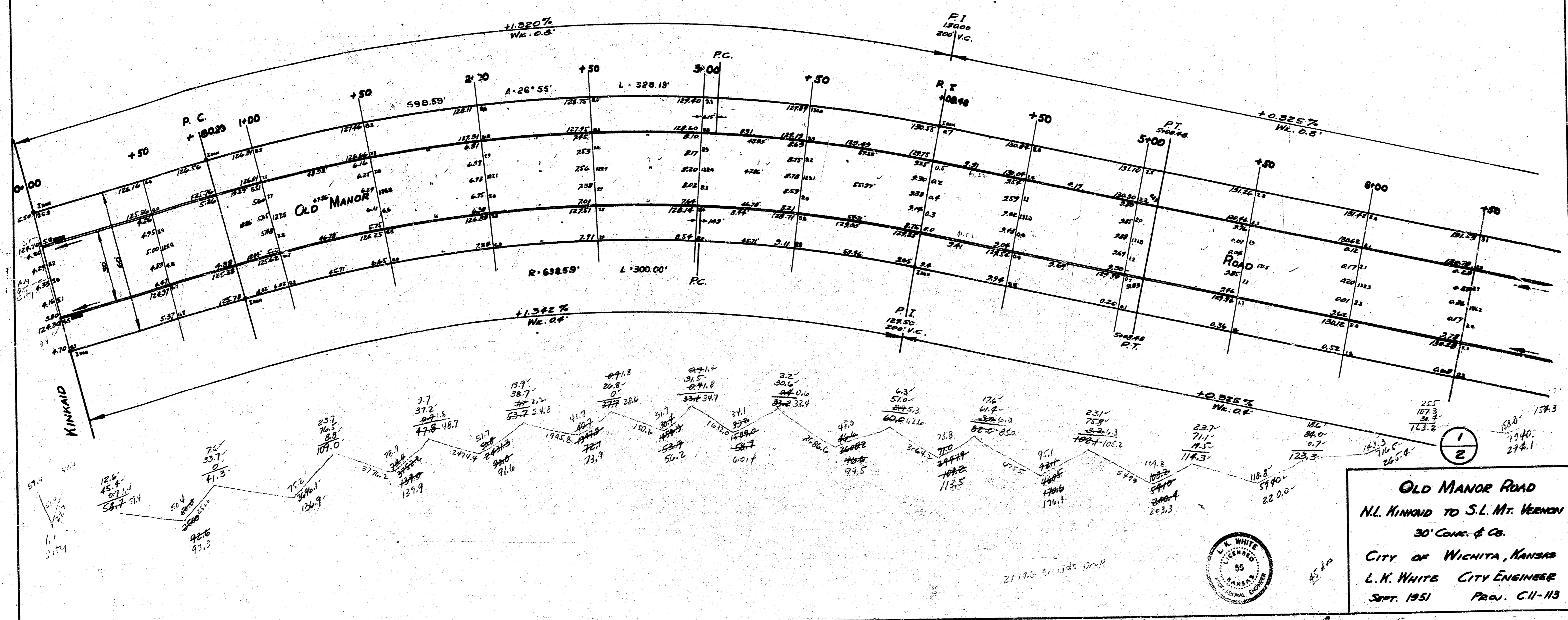


B.M. 131.33 RR SPIKE, S.E. Lt. POLE BET. PINECREST & OLD MANOR 60' N of N.L. KINNAID
 B.M. 149.556 S. END N. ROAD E.S. COR. ISLAND S.W. COR. OLIVER & Mt. VERNON
 B.M. 141.76 NW COR. MAIN S. S.L. Mt. Vernon, S.L. ELMON
 B.M. 142.16 N.W. COR. N. ROAD No. 5003 S.W. CORNER of Mt. Vernon
 B.M. 133.19 S.W. COR. CORN. POND No. 8E Old Manor & Mt. Vernon

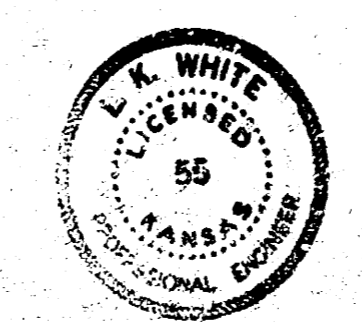
Note: Stripings on W.R.



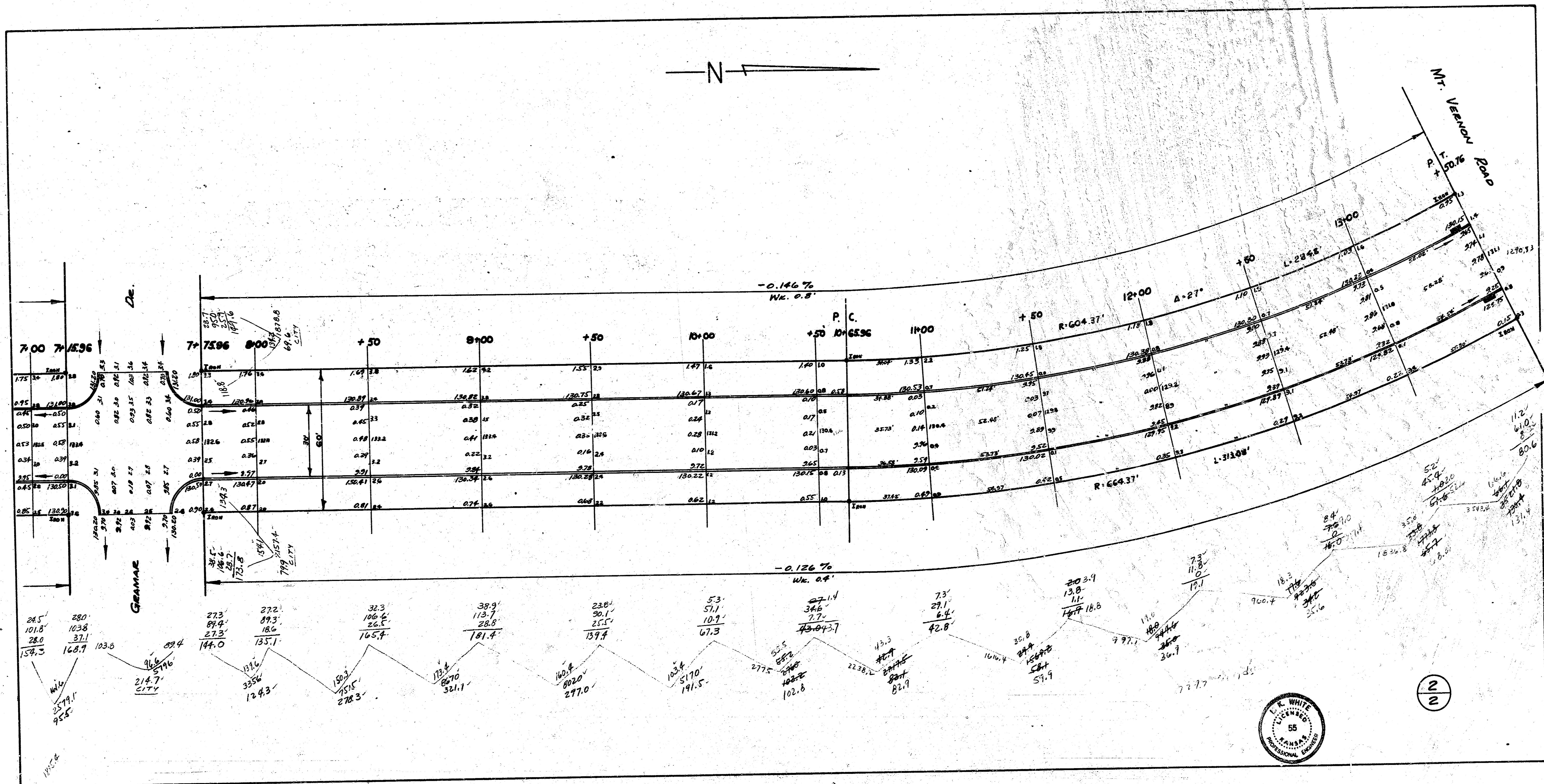
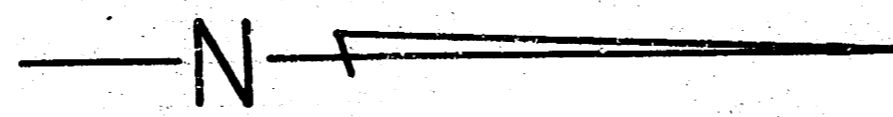
E.V.C.	
PROP.	CITY
3815.1	264.2
+10%	+10%
4190.6 at 425.	400.0 at 425.



OLD MANOR ROAD
 N.L. KINNAID TO S.L. Mt. VERNON
 30' CONC. & CO.
 CITY OF WICHITA, KANSAS
 L.K. WHITE CITY ENGINEER
 SEPT. 1951 PROJ. C11-113

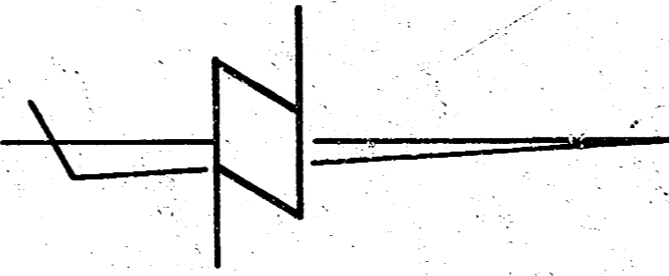


Surveyed by Miss TC 1-15-52
 Plan Date July 1950
 Scale 1" = 200'



H-1

B.M. 130.61 'B' in Builders Fwk. N.E. Cor. Mt. Vernon & Old Manor
B.M. 139.87 Standard N.W. Cor. Mt. Vernon & Edgemoor

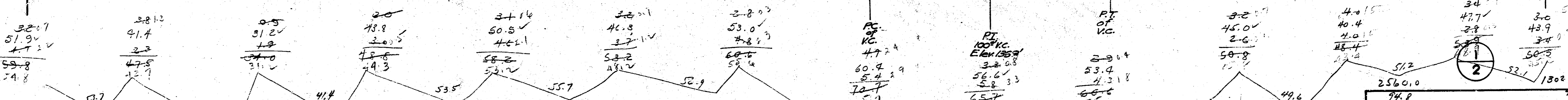
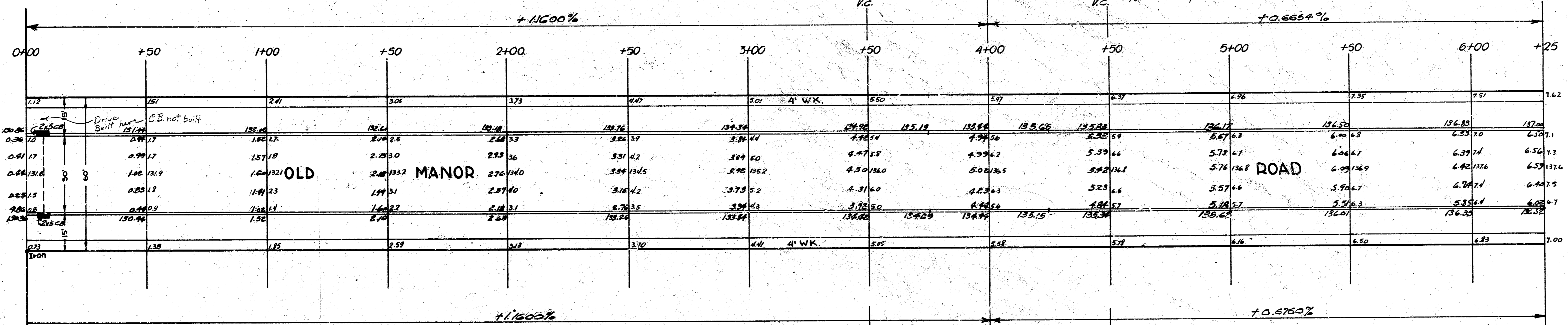


Property

99.6	Fill
98.6	5.4
97.7	1.8
96.8	13.5
95.9	12.5
95.0	12.2
94.1	12.0
93.2	12.0
92.3	12.0
91.4	12.0
90.5	6.1
89.6	9.6% Fill
88.7	10.8
87.8	10.8
86.9	10.8
86.0	10.8
85.1	10.8
84.2	10.8
83.3	10.8
82.4	10.8
81.5	10.8
80.6	10.8
79.7	10.8
78.8	10.8
77.9	10.8
77.0	10.8
76.1	10.8
75.2	10.8
74.3	10.8
73.4	10.8
72.5	10.8
71.6	10.8
70.7	10.8
69.8	10.8
68.9	10.8
68.0	10.8
67.1	10.8
66.2	10.8
65.3	10.8
64.4	10.8
63.5	10.8
62.6	10.8
61.7	10.8
60.8	10.8
59.9	10.8
59.0	10.8
58.1	10.8
57.2	10.8
56.3	10.8
55.4	10.8
54.5	10.8
53.6	10.8
52.7	10.8
51.8	10.8
50.9	10.8
50.0	10.8
49.1	10.8
48.2	10.8
47.3	10.8
46.4	10.8
45.5	10.8
44.6	10.8
43.7	10.8
42.8	10.8
41.9	10.8
41.0	10.8
40.1	10.8
39.2	10.8
38.3	10.8
37.4	10.8
36.5	10.8
35.6	10.8
34.7	10.8
33.8	10.8
32.9	10.8
32.0	10.8
31.1	10.8
30.2	10.8
29.3	10.8
28.4	10.8
27.5	10.8
26.6	10.8
25.7	10.8
24.8	10.8
23.9	10.8
23.0	10.8
22.1	10.8
21.2	10.8
20.3	10.8
19.4	10.8
18.5	10.8
17.6	10.8
16.7	10.8
15.8	10.8
14.9	10.8
14.0	10.8
13.1	10.8
12.2	10.8
11.3	10.8
10.4	10.8
9.5	10.8
8.6	10.8
7.7	10.8
6.8	10.8
5.9	10.8
5.0	10.8
4.1	10.8
3.2	10.8
2.3	10.8
1.4	10.8
0.5	10.8
-0.4	10.8
-1.3	10.8
-2.2	10.8
-3.1	10.8
-4.0	10.8
-4.9	10.8
-5.8	10.8
-6.7	10.8
-7.6	10.8
-8.5	10.8
-9.4	10.8
-10.3	10.8
-11.2	10.8
-12.1	10.8
-13.0	10.8
-13.9	10.8
-14.8	10.8
-15.7	10.8
-16.6	10.8
-17.5	10.8
-18.4	10.8
-19.3	10.8
-20.2	10.8
-21.1	10.8
-22.0	10.8
-22.9	10.8
-23.8	10.8
-24.7	10.8
-25.6	10.8
-26.5	10.8
-27.4	10.8
-28.3	10.8
-29.2	10.8
-30.1	10.8
-31.0	10.8
-31.9	10.8
-32.8	10.8
-33.7	10.8
-34.6	10.8
-35.5	10.8
-36.4	10.8
-37.3	10.8
-38.2	10.8
-39.1	10.8
-40.0	10.8
-40.9	10.8
-41.8	10.8
-42.7	10.8
-43.6	10.8
-44.5	10.8
-45.4	10.8
-46.3	10.8
-47.2	10.8
-48.1	10.8
-49.0	10.8
-49.9	10.8
-50.8	10.8
-51.7	10.8
-52.6	10.8
-53.5	10.8
-54.4	10.8
-55.3	10.8
-56.2	10.8
-57.1	10.8
-58.0	10.8
-58.9	10.8
-59.8	10.8
-60.7	10.8
-61.6	10.8
-62.5	10.8
-63.4	10.8
-64.3	10.8
-65.2	10.8
-66.1	10.8
-67.0	10.8
-67.9	10.8
-68.8	10.8
-69.7	10.8
-70.6	10.8
-71.5	10.8
-72.4	10.8
-73.3	10.8
-74.2	10.8
-75.1	10.8
-76.0	10.8
-76.9	10.8
-77.8	10.8
-78.7	10.8
-79.6	10.8
-80.5	10.8
-81.4	10.8
-82.3	10.8
-83.2	10.8
-84.1	10.8
-85.0	10.8
-85.9	10.8
-86.8	10.8
-87.7	10.8
-88.6	10.8
-89.5	10.8
-90.4	10.8
-91.3	10.8
-92.2	10.8
-93.1	10.8
-94.0	10.8
-94.9	10.8
-95.8	10.8
-96.7	10.8
-97.6	10.8
-98.5	10.8
-99.4	10.8
-100.3	10.8

26.0 x 2 = 52.0 in 100' run
2.0 x 25 = 50.0 477' runs

MT. VERNON ROAD

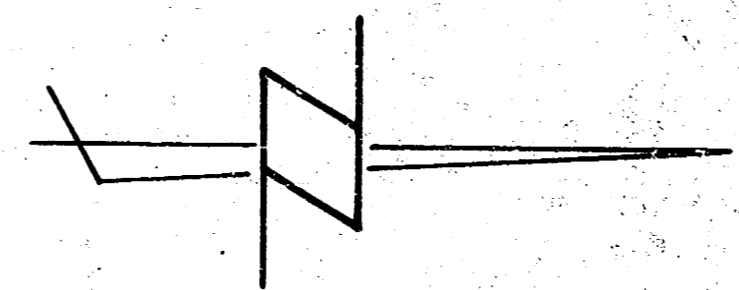


OLD MANOR ROAD
 N.L. MT. VERNON RD. TO S.L. FUNSTON AVE
 30' Conc & Cb.
 CITY OF WICHITA, KANSAS
 L.K. WHITE CITY ENGINEER
 SEPT. 1981 PROJ. NO. 1C11-123



H-1

B.M. 14083 'X' on cb. E.S. Old Manor S.Cb. Funston



Station	6+25	+50	7+00	+50	8+00	+50	9+00	+50	10+00	+50	11+00	+50	12+00	+46.1
Top	76.2	77.1	78.0	78.9	79.8	80.7	81.6	82.5	83.4	84.3	85.2	86.1	87.0	87.9
1st	137.1	137.1	137.1	137.1	137.1	137.1	137.1	137.1	137.1	137.1	137.1	137.1	137.1	137.1
2nd	6.58	6.73	6.88	7.03	7.18	7.33	7.48	7.63	7.78	7.93	8.08	8.23	8.38	8.53
3rd	6.59	6.76	6.93	7.10	7.27	7.44	7.61	7.78	7.95	8.12	8.29	8.46	8.63	8.80
4th	6.60	6.78	6.96	7.14	7.32	7.50	7.68	7.86	8.04	8.22	8.40	8.58	8.76	8.94
5th	6.61	6.80	6.99	7.18	7.37	7.56	7.75	7.94	8.13	8.32	8.51	8.70	8.89	9.08
6th	6.62	6.82	7.01	7.20	7.39	7.58	7.77	7.96	8.15	8.34	8.53	8.72	8.91	9.10
7th	6.63	6.84	7.03	7.22	7.41	7.60	7.79	7.98	8.17	8.36	8.55	8.74	8.93	9.12
8th	6.64	6.86	7.05	7.24	7.43	7.62	7.81	8.00	8.19	8.38	8.57	8.76	8.95	9.14
9th	6.65	6.88	7.07	7.26	7.45	7.64	7.83	8.02	8.21	8.40	8.59	8.78	8.97	9.16
10th	6.66	6.90	7.09	7.28	7.47	7.66	7.85	8.04	8.23	8.42	8.61	8.80	8.99	9.18
11th	6.67	6.92	7.11	7.30	7.49	7.68	7.87	8.06	8.25	8.44	8.63	8.82	9.01	9.20
12th	6.68	6.94	7.13	7.32	7.51	7.70	7.89	8.08	8.27	8.46	8.65	8.84	9.03	9.22
13th	6.69	6.96	7.15	7.34	7.53	7.72	7.91	8.10	8.29	8.48	8.67	8.86	9.05	9.24
14th	6.70	6.98	7.17	7.36	7.55	7.74	7.93	8.12	8.31	8.50	8.69	8.88	9.07	9.26
15th	6.71	7.00	7.19	7.38	7.57	7.76	7.95	8.14	8.33	8.52	8.71	8.90	9.09	9.28
16th	6.72	7.02	7.21	7.40	7.59	7.78	7.97	8.16	8.35	8.54	8.73	8.92	9.11	9.30
17th	6.73	7.04	7.23	7.42	7.61	7.80	7.99	8.18	8.37	8.56	8.75	8.94	9.13	9.32
18th	6.74	7.06	7.25	7.44	7.63	7.82	8.01	8.20	8.39	8.58	8.77	8.96	9.15	9.34
19th	6.75	7.08	7.27	7.46	7.65	7.84	8.03	8.22	8.41	8.60	8.79	8.98	9.17	9.36
20th	6.76	7.10	7.29	7.48	7.67	7.86	8.05	8.24	8.43	8.62	8.81	9.00	9.19	9.38
21st	6.77	7.12	7.31	7.50	7.69	7.88	8.07	8.26	8.45	8.64	8.83	9.02	9.21	9.40
22nd	6.78	7.14	7.33	7.52	7.71	7.90	8.09	8.28	8.47	8.66	8.85	9.04	9.23	9.42
23rd	6.79	7.16	7.35	7.54	7.73	7.92	8.11	8.30	8.49	8.68	8.87	9.06	9.25	9.44
24th	6.80	7.18	7.37	7.56	7.75	7.94	8.13	8.32	8.51	8.70	8.89	9.08	9.27	9.46
25th	6.81	7.20	7.39	7.58	7.77	7.96	8.15	8.34	8.53	8.72	8.91	9.10	9.29	9.48
26th	6.82	7.22	7.41	7.60	7.79	7.98	8.17	8.36	8.55	8.74	8.93	9.12	9.31	9.50
27th	6.83	7.24	7.43	7.62	7.81	8.00	8.19	8.38	8.57	8.76	8.95	9.14	9.33	9.52
28th	6.84	7.26	7.45	7.64	7.83	8.02	8.21	8.40	8.59	8.78	8.97	9.16	9.35	9.54
29th	6.85	7.28	7.47	7.66	7.85	8.04	8.23	8.42	8.61	8.80	8.99	9.18	9.37	9.56
30th	6.86	7.30	7.49	7.68	7.87	8.06	8.25	8.44	8.63	8.82	9.01	9.20	9.39	9.58
31st	6.87	7.32	7.51	7.70	7.89	8.08	8.27	8.46	8.65	8.84	9.03	9.22	9.41	9.60
32nd	6.88	7.34	7.53	7.72	7.91	8.10	8.29	8.48	8.67	8.86	9.05	9.24	9.43	9.62
33rd	6.89	7.36	7.55	7.74	7.93	8.12	8.31	8.50	8.69	8.88	9.07	9.26	9.45	9.64
34th	6.90	7.38	7.57	7.76	7.95	8.14	8.33	8.52	8.71	8.90	9.09	9.28	9.47	9.66
35th	6.91	7.40	7.59	7.78	7.97	8.16	8.35	8.54	8.73	8.92	9.11	9.30	9.49	9.68
36th	6.92	7.42	7.61	7.80	7.99	8.18	8.37	8.56	8.75	8.94	9.13	9.32	9.51	9.70
37th	6.93	7.44	7.63	7.82	8.01	8.20	8.39	8.58	8.77	8.96	9.15	9.34	9.53	9.72
38th	6.94	7.46	7.65	7.84	8.03	8.22	8.41	8.60	8.79	8.98	9.17	9.36	9.55	9.74
39th	6.95	7.48	7.67	7.86	8.05	8.24	8.43	8.62	8.81	9.00	9.19	9.38	9.57	9.76
40th	6.96	7.50	7.69	7.88	8.07	8.26	8.45	8.64	8.83	9.02	9.21	9.40	9.59	9.78
41st	6.97	7.52	7.71	7.90	8.09	8.28	8.47	8.66	8.85	9.04	9.23	9.42	9.61	9.80
42nd	6.98	7.54	7.73	7.92	8.11	8.30	8.49	8.68	8.87	9.06	9.25	9.44	9.63	9.82
43rd	6.99	7.56	7.75	7.94	8.13	8.32	8.51	8.70	8.89	9.08	9.27	9.46	9.65	9.84
44th	7.00	7.58	7.77	7.96	8.15	8.34	8.53	8.72	8.91	9.10	9.29	9.48	9.67	9.86
45th	7.01	7.60	7.79	7.98	8.17	8.36	8.55	8.74	8.93	9.12	9.31	9.50	9.69	9.88
46th	7.02	7.62	7.81	8.00	8.19	8.38	8.57	8.76	8.95	9.14	9.33	9.52	9.71	9.90
47th	7.03	7.64	7.83	8.02	8.21	8.40	8.59	8.78	8.97	9.16	9.35	9.54	9.73	9.92
48th	7.04	7.66	7.85	8.04	8.23	8.42	8.61	8.80	8.99	9.18	9.37	9.56	9.75	9.94
49th	7.05	7.68	7.87	8.06	8.25	8.44	8.63	8.82	9.01	9.20	9.39	9.58	9.77	9.96
50th	7.06	7.70	7.89	8.08	8.27	8.46	8.65	8.84	9.03	9.22	9.41	9.60	9.79	9.98

