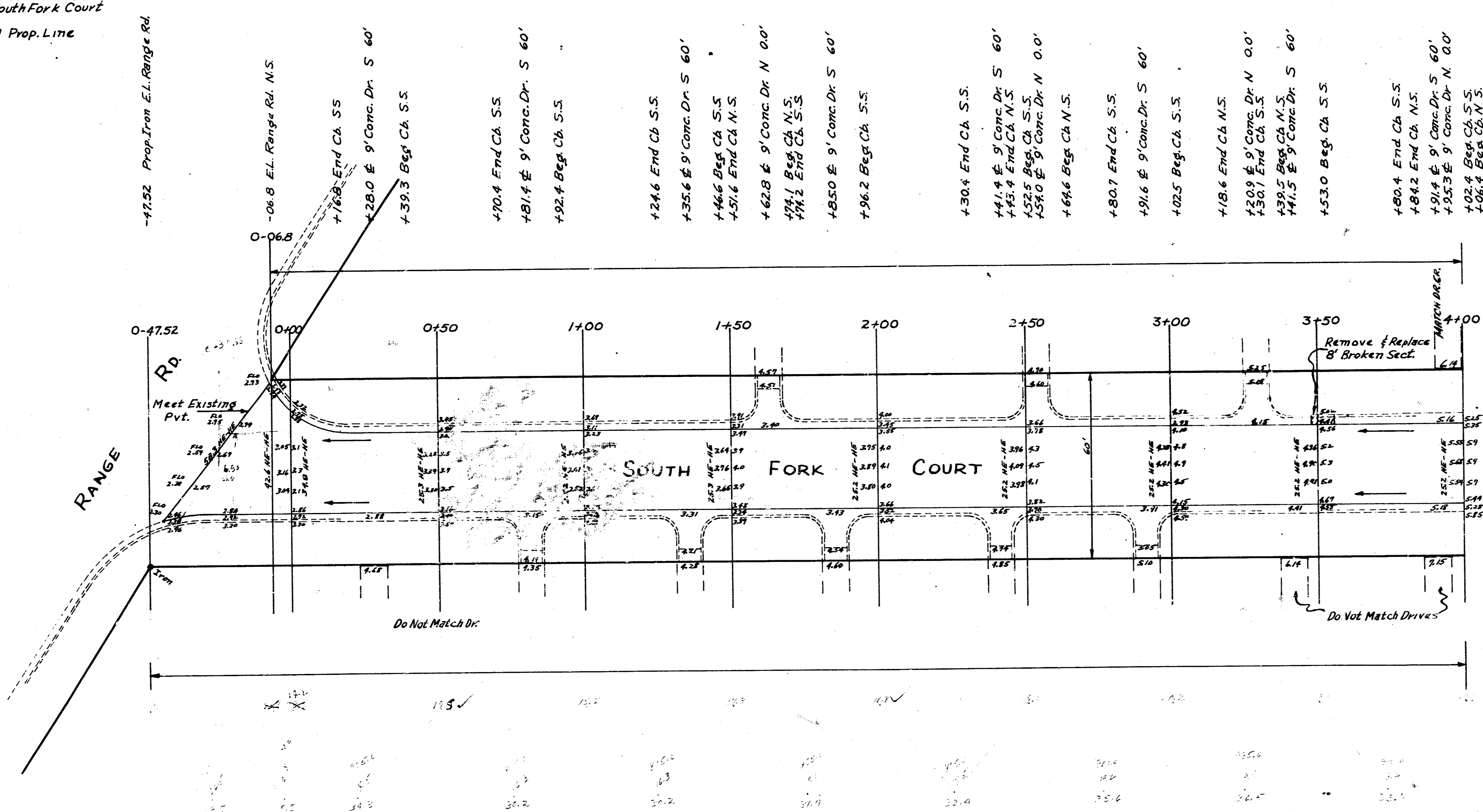


3M. 93.98 "M" in Mueller Fire
 Plug. 100' S of South Fork Court
 E.S. Range Rd.
 Chaining E On N Prop. Line

Survey
 Plan
 Exc
 Checked



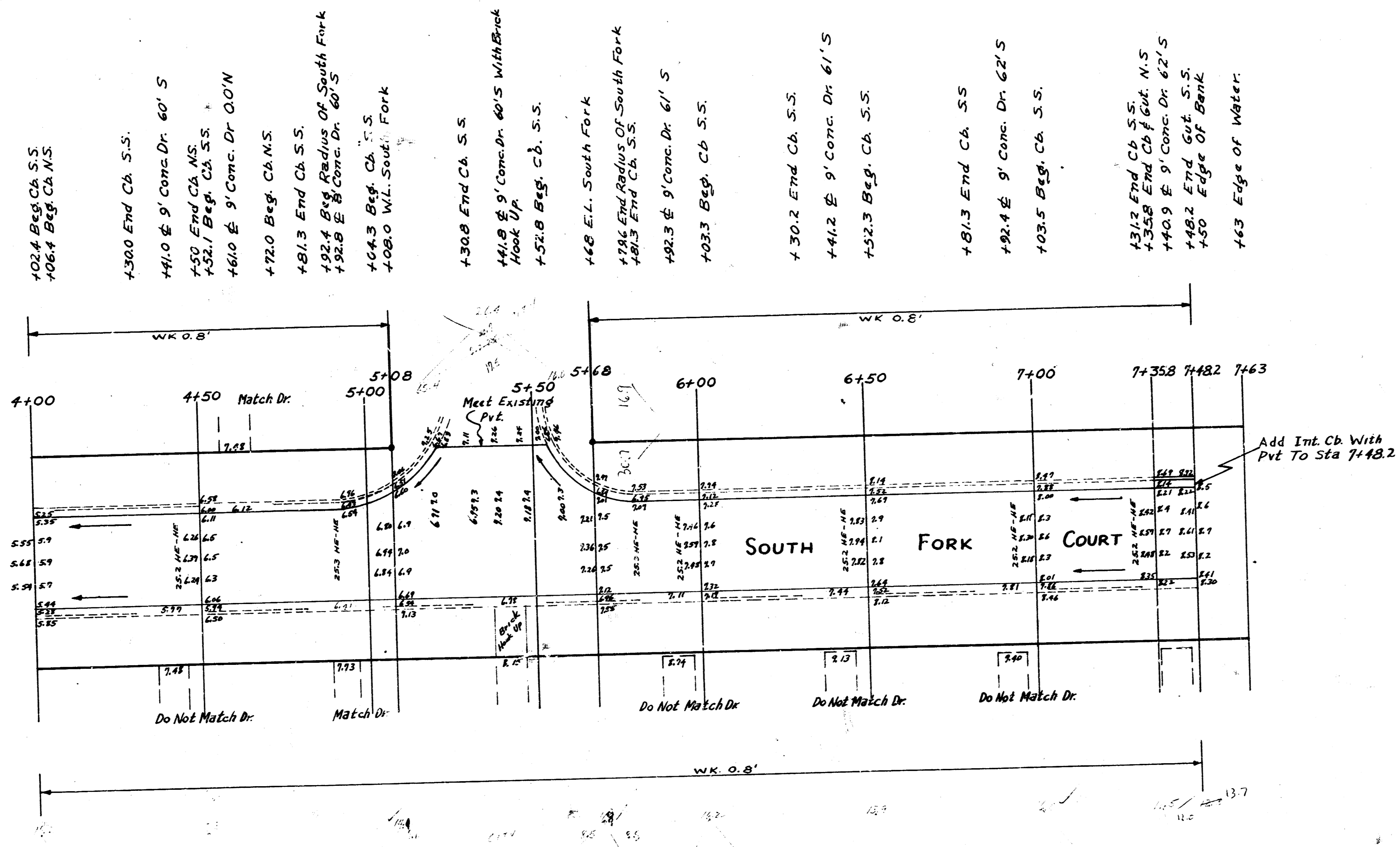
- 47.52 Prop. Iron E.L. Range Rd.
- 06.8 E.L. Range Rd. N.S.
- +168.8 End CA S.S.
- +280.0 E 9' Conc. Dr. S 60'
- +393.3 Beg. CA S.S.
- +70.4 End CA S.S.
- +81.4 E 9' Conc. Dr. S 60'
- +92.4 Beg. CA S.S.
- +24.6 End Cb S.S.
- +35.6 E 9' Conc. Dr. S 60'
- +46.6 Beg. CA S.S.
- +57.6 End CA N.S.
- +62.8 E 9' Conc. Dr. N 0.0'
- +74.1 Beg. CA N.S.
- +85.2 End CA S.S.
- +96.2 Beg. CA S.S.
- +30.4 End CA S.S.
- +41.4 E 9' Conc. Dr. S 60'
- +52.4 End CA N.S.
- +63.4 Beg. CA S.S.
- +74.4 E 9' Conc. Dr. N 0.0'
- +85.4 End CA S.S.
- +96.4 Beg. CA S.S.
- +107.4 End CA S.S.
- +118.4 E 9' Conc. Dr. S 60'
- +129.4 End CA S.S.
- +140.4 Beg. CA S.S.
- +151.4 E 9' Conc. Dr. N 0.0'
- +162.4 End CA S.S.
- +173.4 End CA S.S.
- +184.4 E 9' Conc. Dr. S 60'
- +195.4 End CA S.S.
- +206.4 Beg. CA S.S.



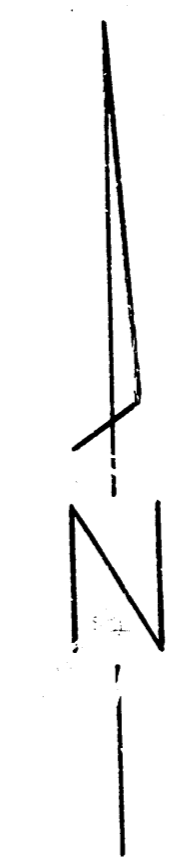
1/2

SOUTH FORK COURT
 EL RANGE RD TO 200' EAST OF SOUTH FORK
 26' CONC.
 CITY OF WICHITA
 B.E. SMITH, CITY ENGINEER
 MARCH 1954 PROJ. No. C13-198





- 102.4 Beg. CA S.S.
- 106.4 Beg. CA S.S.
- 130.0 End. CA S.S.
- 141.0 ± 9' Conc. Dr. 60' S
- 150 End. CA S.S.
- 152.1 Beg. CA S.S.
- 161.0 ± 9' Conc. Dr. 0.0' N
- 172.0 Beg. CA S.S.
- 181.3 End. CA S.S.
- 192.4 8' Radius Of South Fork
- 195.8 ± 9' Conc. Dr. 60' S
- 104.3 Beg. CA S.S.
- 108.0 W.L. South Fork
- 130.8 End. CA S.S.
- 141.8 ± 9' Conc. Dr. 60' S With Bank Hook Up
- 152.8 Beg. CA S.S.
- 148 E.L. South Fork
- 192.4 End. Radius Of South Fork
- 195.8 End. CA S.S.
- 192.3 ± 9' Conc. Dr. 61' S
- 193.3 Beg. CA S.S.
- 130.2 End. CA S.S.
- 141.2 ± 9' Conc. Dr. 61' S
- 152.3 Beg. CA S.S.
- 181.3 End. CA S.S.
- 192.4 ± 9' Conc. Dr. 62' S
- 103.5 Beg. CA S.S.
- 131.2 End. CA S.S.
- 135.8 End. Cb. 60' N.S.
- 140.9 ± 9' Conc. Dr. 62' S
- 148.2 End. Gut. S.S.
- 150 Edge Of Bank
- 143 Edge Of Water



2/2

SOUTH FORK COURT

Proj. No. C13-198