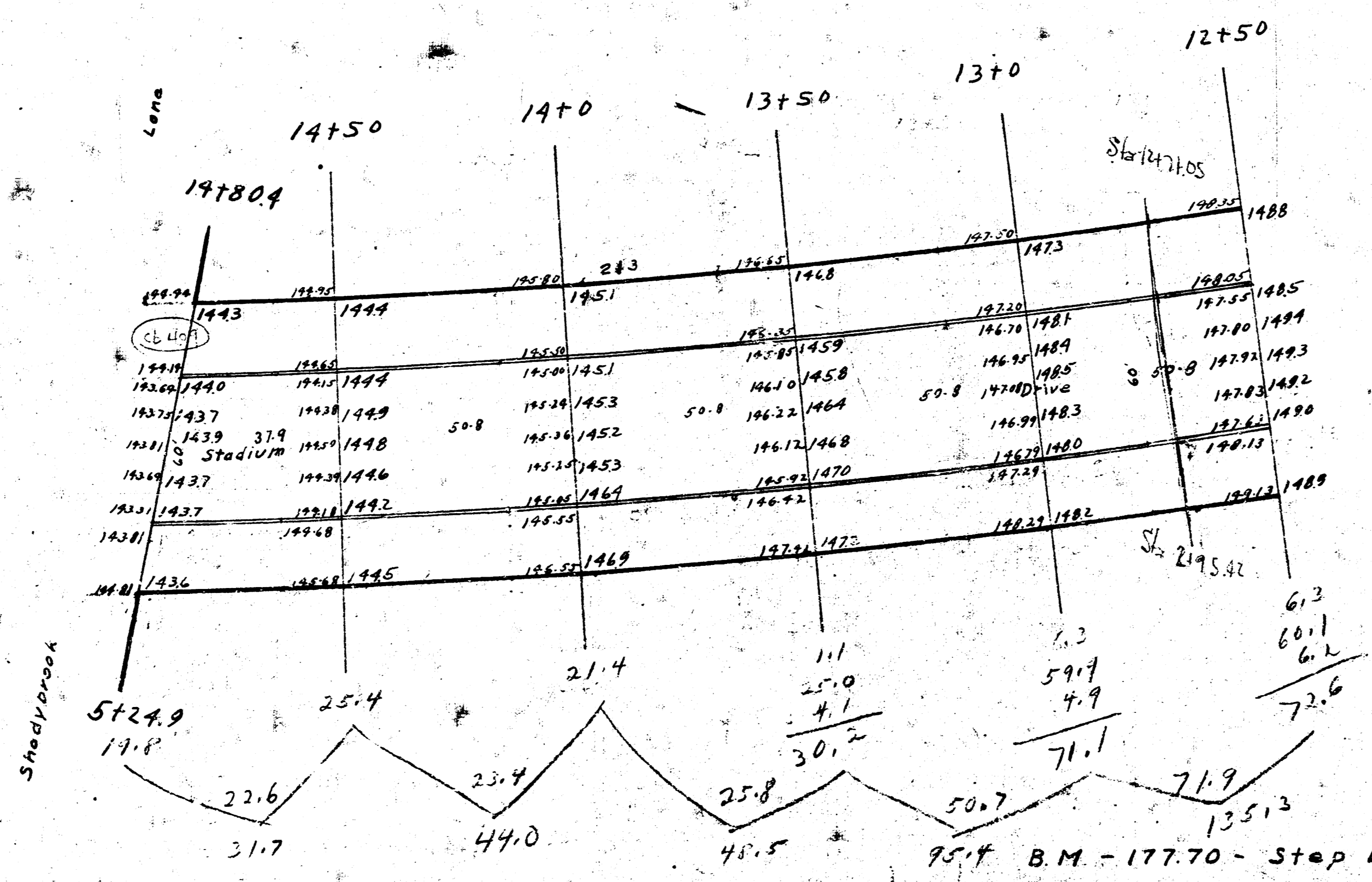


1942  
 Stadium Drive - W.L. Hillside - S.L. Shadybrook  
 30' Conc. - Int Curb

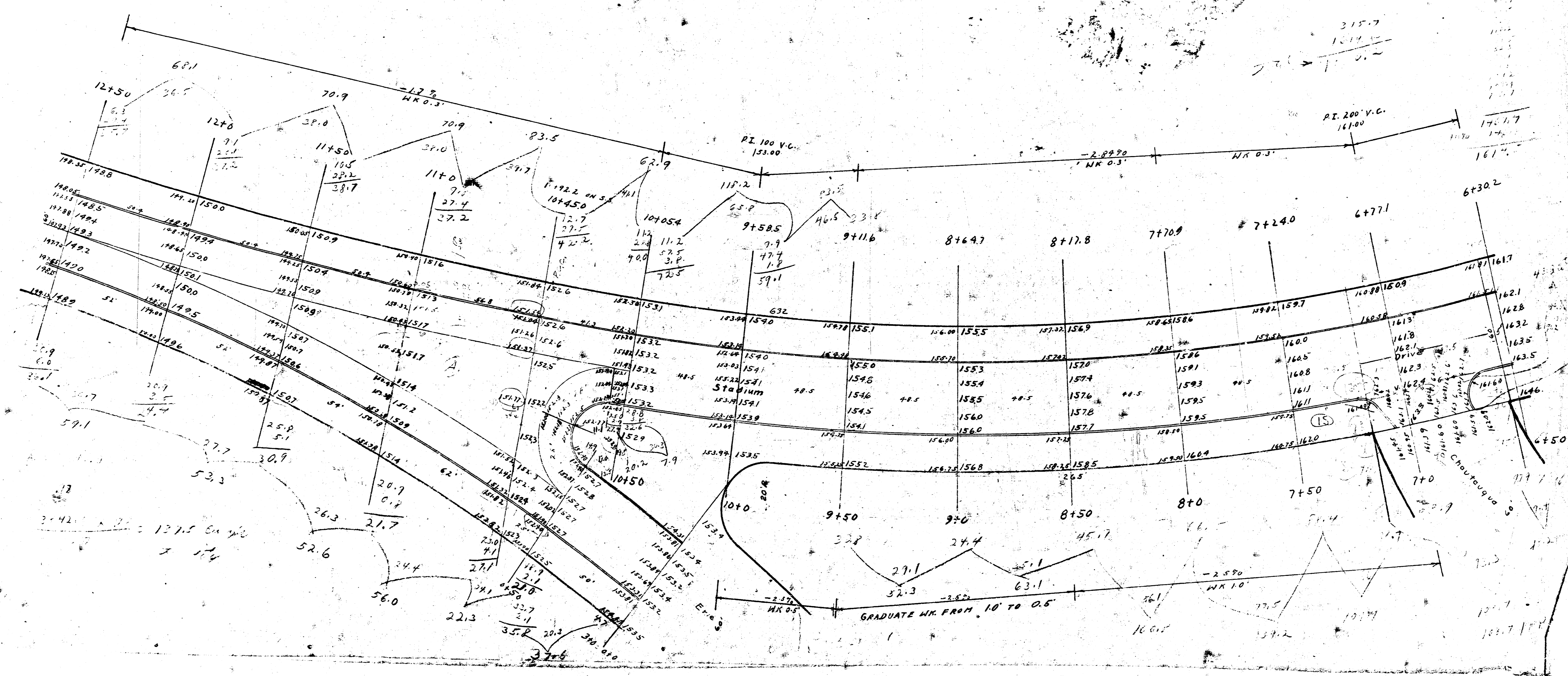


Sta. measured with 50' chords on South Prop. line to Sta. 10+92.2. Sta. then measured with 50' chords on North Prop. line to Sta. 14+80.4 S.L. Shadybrook Lane. X Sections taken radially.

11.7	
51.7	
47.0	
11.5	
11.4	
125.3	
554.1	
25.5	
390.4	
1190	

391.4	
567.7	
1814.5	
315.7	
354.4	
2012.6	
3137.0	



Sta.	S.P.L.	±	N.P.L.
0+40 Ave.	174.08	174.25	174.92
0-30	174.2	174.2	174.6
0-10	171.2	172.2	173.7

