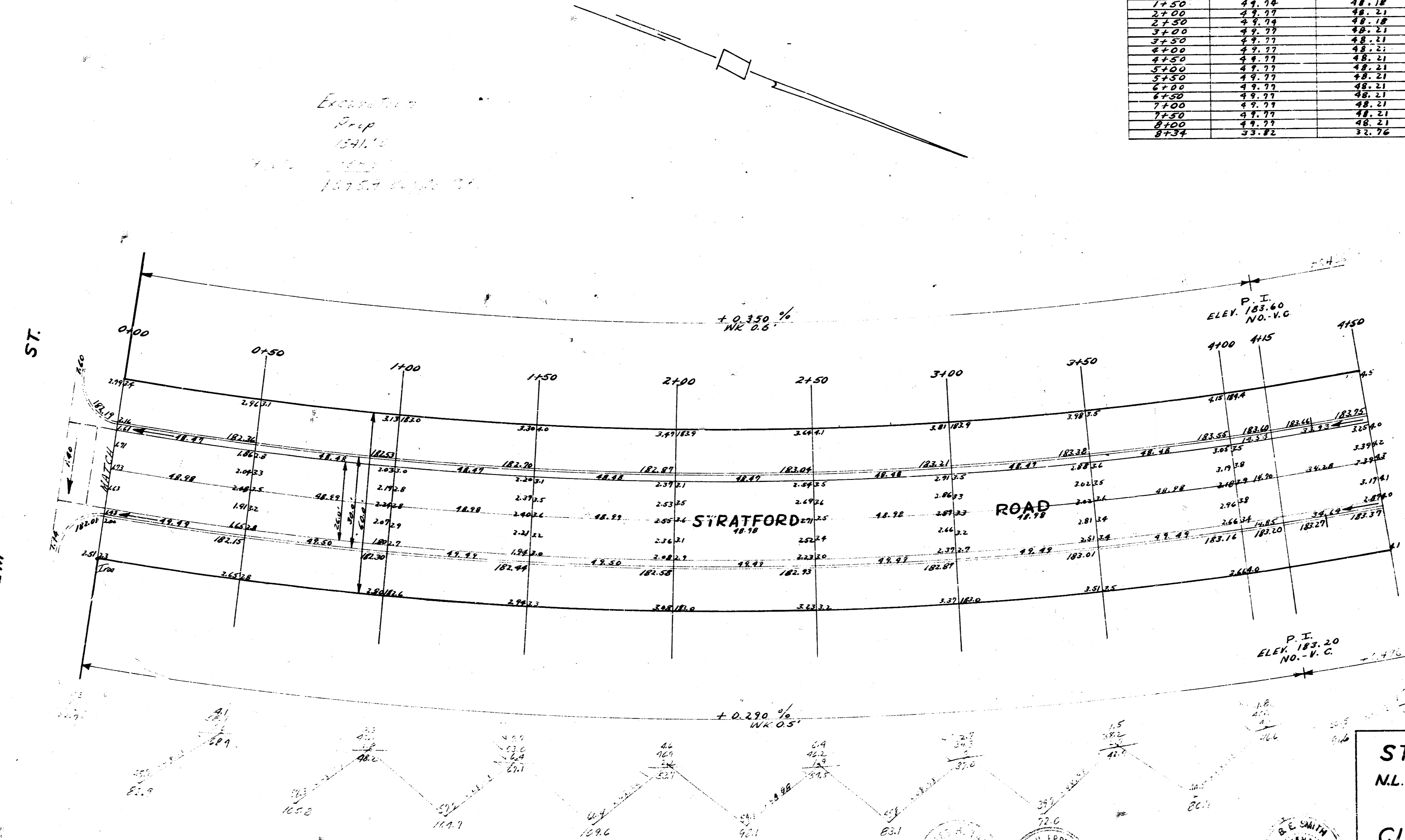


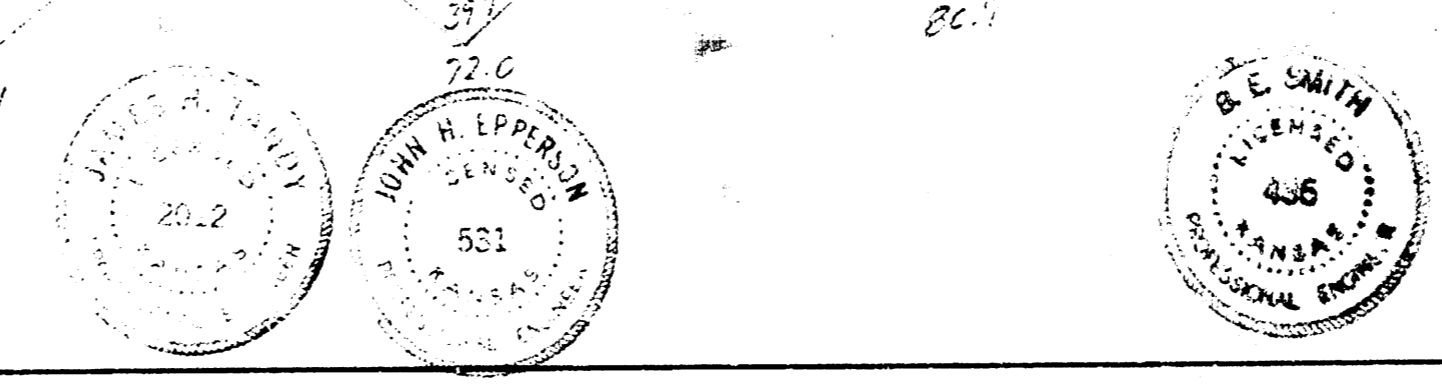
BM 182.22 "R" IN RITCHIE NL STRATFORD NORTH CURB ELM.
 BM 183.84 "R" IN RITCHIE EL CRESTHILL SOUTH CURB ELM.
 BM 185.93 "R" IN RITCHIE NL CRESTHILL EAST CURB STRATFORD
 STATIONING 1/4 MILE LONG ON EAST PROP LINE.

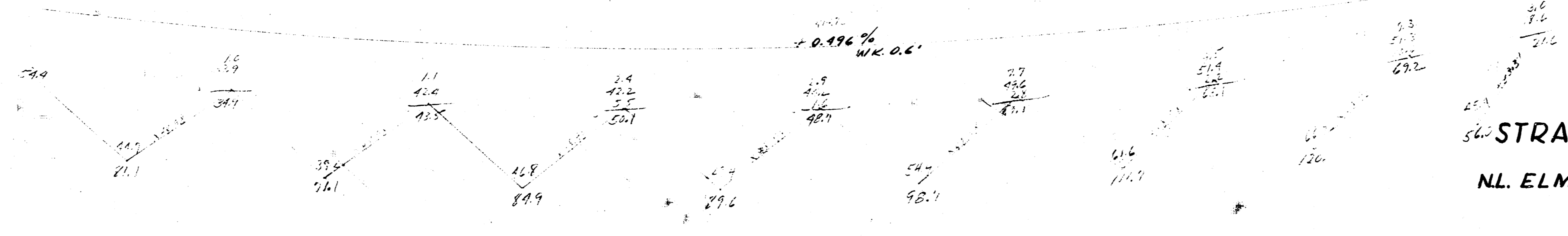
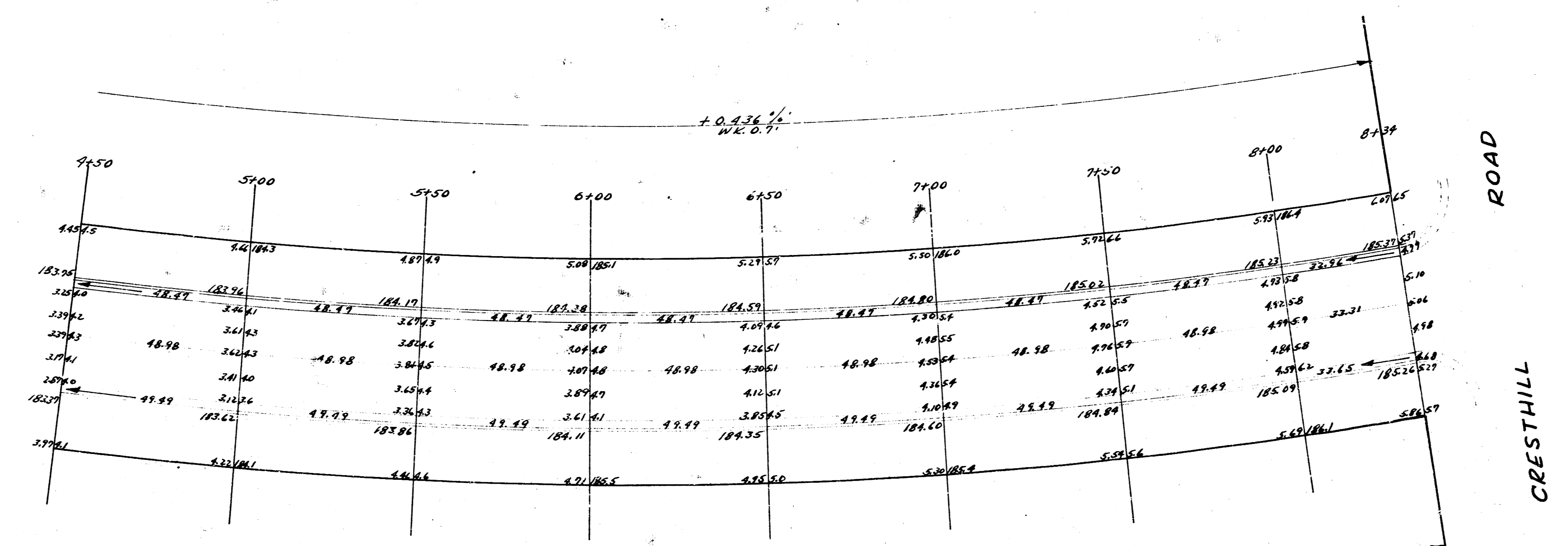
CURVE DATA IS BASED ON EAST PROP LINE R. 1472.57 Δ: 32° 29'

STATIONING	CH. OFF-FIRE ECR	CH. OFF-FIRE MCB	DEF	TOTAL DEF.
0+00				
0+50	49.74	48.18	0° 38' 27"	0° 38' 27"
1+00	49.77	48.21	0° 38' 27"	0° 38' 27"
1+50	49.78	48.21	0° 38' 27"	0° 38' 27"
2+00	49.77	48.21	0° 38' 27"	0° 38' 27"
2+50	49.74	48.18	0° 38' 27"	0° 38' 27"
3+00	49.77	48.21	0° 38' 27"	0° 38' 27"
3+50	49.77	48.21	0° 38' 27"	0° 38' 27"
4+00	49.77	48.21	0° 38' 27"	0° 38' 27"
4+50	49.77	48.21	0° 38' 27"	0° 38' 27"
5+00	49.77	48.21	0° 38' 27"	0° 38' 27"
5+50	49.77	48.21	0° 38' 27"	0° 38' 27"
6+00	49.77	48.21	0° 38' 27"	0° 38' 27"
6+50	49.77	48.21	0° 38' 27"	0° 38' 27"
7+00	49.77	48.21	0° 38' 27"	0° 38' 27"
7+50	49.77	48.21	0° 38' 27"	0° 38' 27"
8+00	49.77	48.21	0° 38' 27"	0° 38' 27"
8+34	33.82	32.76	0° 38' 41"	12° 13' 30"



STRATFORD ROAD
 NL. ELM TO NL. CRESTHILL
 26-2-30 AC.
 CITY OF WICHITA KAN.
 BE SMITH CITY ENGINEER
 MAY 1958 PROJ. NO. C14-330





56 STRATFORD ROAD
 N.L. ELM TO N.L. CRESTHILL

ROAD
 CRESTHILL