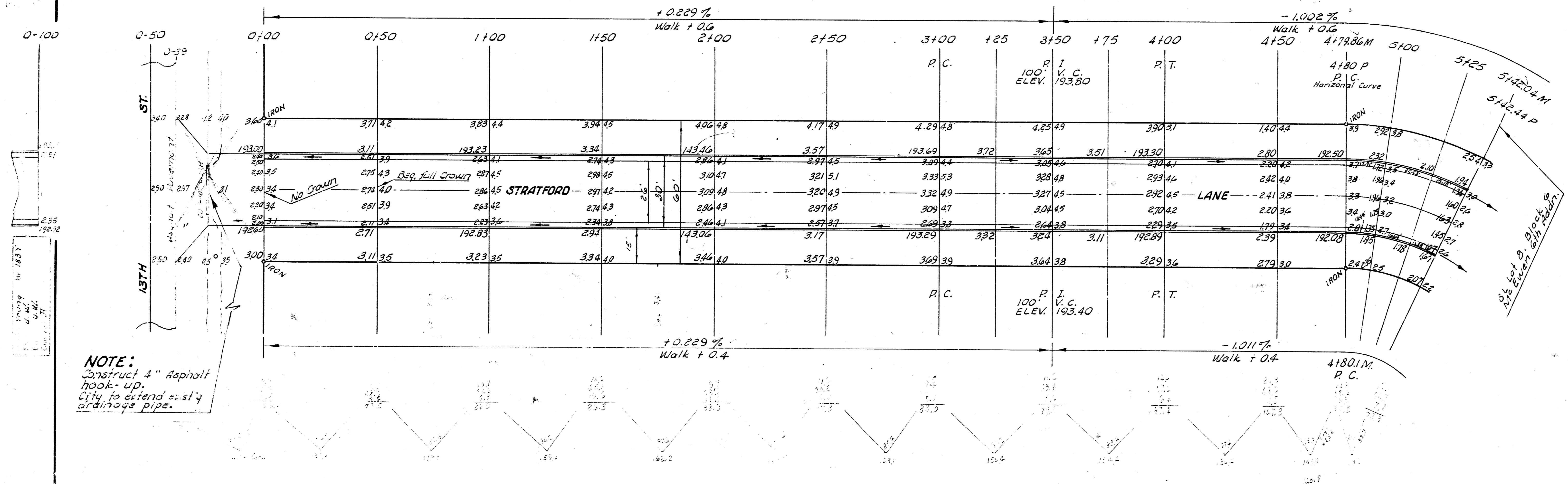
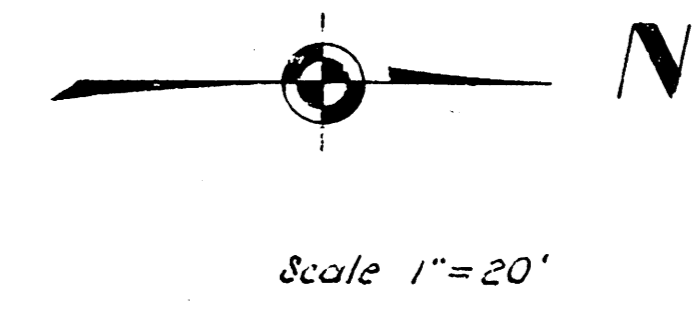


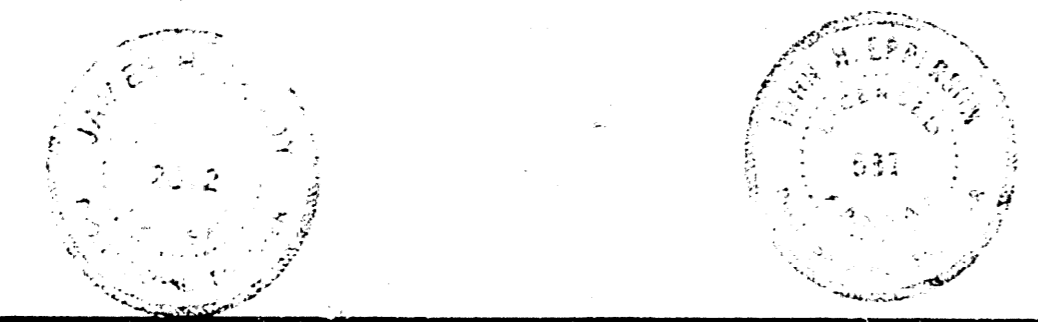
3. N. 19.7-29' from NE cor. Stone Pilaster base 1/4 mi. E. Woodlawn @ S. S. 13th.  
 B. N. 19+2 Extreme NW cor. conc. Parch Ho # 6701 E. 13th.  
 Sta. on West 12.

| CURVE DATA                          |                       |   |  |            |                  |  |
|-------------------------------------|-----------------------|---|--|------------|------------------|--|
| Sta. 4+79.86 to Sta. 5+42.40        |                       |   |  |            |                  |  |
| Sta. on West 12                     |                       |   |  |            |                  |  |
| R = 135.35'                         |                       |   |  |            |                  |  |
| $\frac{A}{R} = 13^{\circ} 09' 40''$ |                       |   |  |            |                  |  |
| Min. per lin. ft. = 12.69971        |                       |   |  |            |                  |  |
| stations                            | Arc length on West 12 | Chord length & offset from face of W. cb. R = 124.35' | Chord length & offset from face of E. cb. R = 82.35' | Deflection | Total Deflection |  |
| PC 4+79.86                          |                       |   |  |            |                  |  |
| 5+00                                | 20.14'                | 19.08'  | 12.24'   | 4° 15' 46" | 4° 15' 46"       |  |
| 5+25                                | 25.00'                | 23.67'  | 15.19'   | 5° 17' 30" | 9° 33' 16"       |  |
| 5+42.40                             | 17.04'                | 16.15'  | 10.36'   | 3° 36' 24" | 13° 09' 40"      |  |



**NOTE:**  
 Construct 4" Asphalt hook-up.  
 City to extend exist'g drainage pipe.

| EARTHWORK Excavation |        |         |
|----------------------|--------|---------|
| CITY                 | PROP.  |         |
| 48.4                 | 1623.3 |         |
| 4.8                  | 162.3  |         |
| 53.2                 | 1785.6 | Cu. Yds |



**STRATFORD LANE**  
 NE 13TH ST. TO SW LOT 3, BLK. 6  
 W. E. EWEN 6TH ADDN.  
 26' - 2' - 30" A.C.  
 CITY OF WICHITA KANSAS  
 B. E. SMITH CITY ENGINEER  
 MAY 1961 PROJ. NO. G19-35

**CURVE DATA**  
Sta. 5142.04 to Sta. 6126.32  
Sta. on North R.  
R = 135.35'  
 $\frac{A}{2} = 17^\circ 50' 20''$   
Min. per lin. ft. = 12.69971

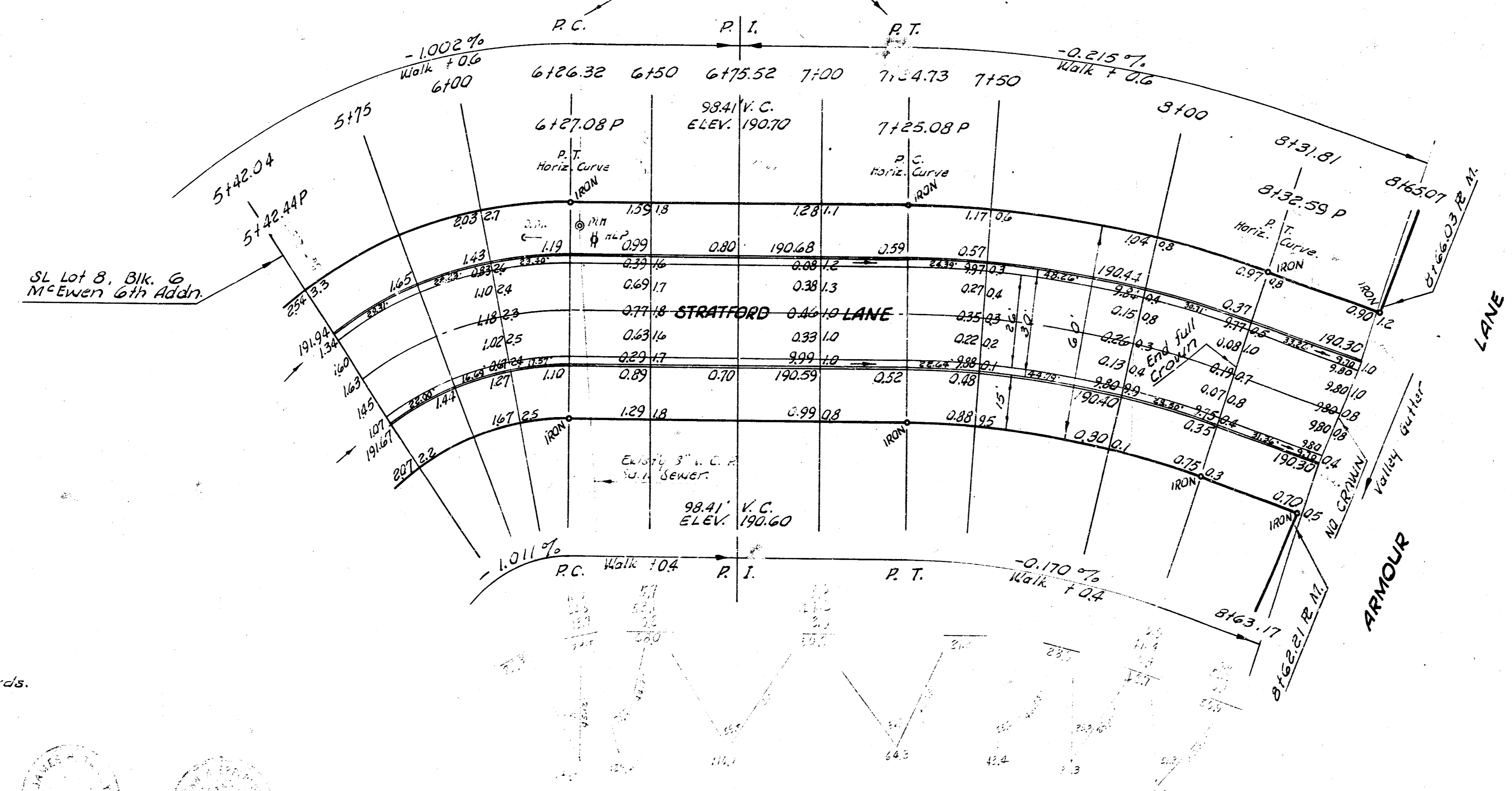
| Stations | Arc length on North R. | Chord length & offset from face of N. cb R = 129.35' | Chord length & offset from face of S. cb R = 32.35' | Deflection | Total Deflection |
|----------|------------------------|--|---|------------|------------------|
| 5142.04  |                        |  |   |            |                  |
| 5175     | 32.96'                 | 31.18'   | 20.00'  | 6° 58' 35" | 6° 58' 35"       |
| 6100     | 25.00'                 | 23.68'   | 15.19'  | 5° 17' 30" | 12° 16' 05"      |
| 6126.32  | 26.32'                 | 24.92'   | 15.99'  | 5° 34' 15" | 17° 50' 20"      |

**CURVE DATA**  
Sta. 7124.73 to Sta. 8131.81  
Sta. on North R.  
R = 432.04'  
 $\frac{A}{2} = 7^\circ 06' 00''$   
Min. per lin. ft. = 3.978333

| Stations | Arc length on North R. | Chord length & offset from face of N. cb R = 425.04' | Chord length & offset from face of S. cb R = 373.04' | Deflection | Total Deflection |
|----------|------------------------|--|--|------------|------------------|
| 7124.73  |                        |  |  |            |                  |
| 7150     | 25.27'                 | 24.85'   | 22.16'   | 1° 40' 32" | 1° 40' 32"       |
| 8100     | 50.00'                 | 49.10'   | 43.84'   | 3° 18' 55" | 4° 59' 27"       |
| 8131.81  | 31.81'                 | 31.30'   | 27.90'   | 2° 06' 33" | 7° 36' 30"       |

B.M. 197.49 " on N.E. cor. stone pilaster base 1/2 mi. E. Woodlawn @ S.S. 13th.  
B.M. 194.12 Extreme NW cor. conc. porch Ho # 6701 E. 13th.  
Sta. on North R.

**NOTE:**  
P.C. & P.T. are for the vertical curve.



**EARTHWORK**  
Excavation  
Prop. 583.4  
+6% 58.9  
642.3 Cu. yds.

**STRATFORD LANE**  
SL LOT 8, BLK. 6 TO WL ARMOUR  
IN M'EWEN 6TH ADDN.  
26'-2'-30" A.C.  
CITY OF WICHITA, KANSAS  
B. E. SMITH CITY ENGINEER  
MAY 1961 PROJ. NO. C19-36

