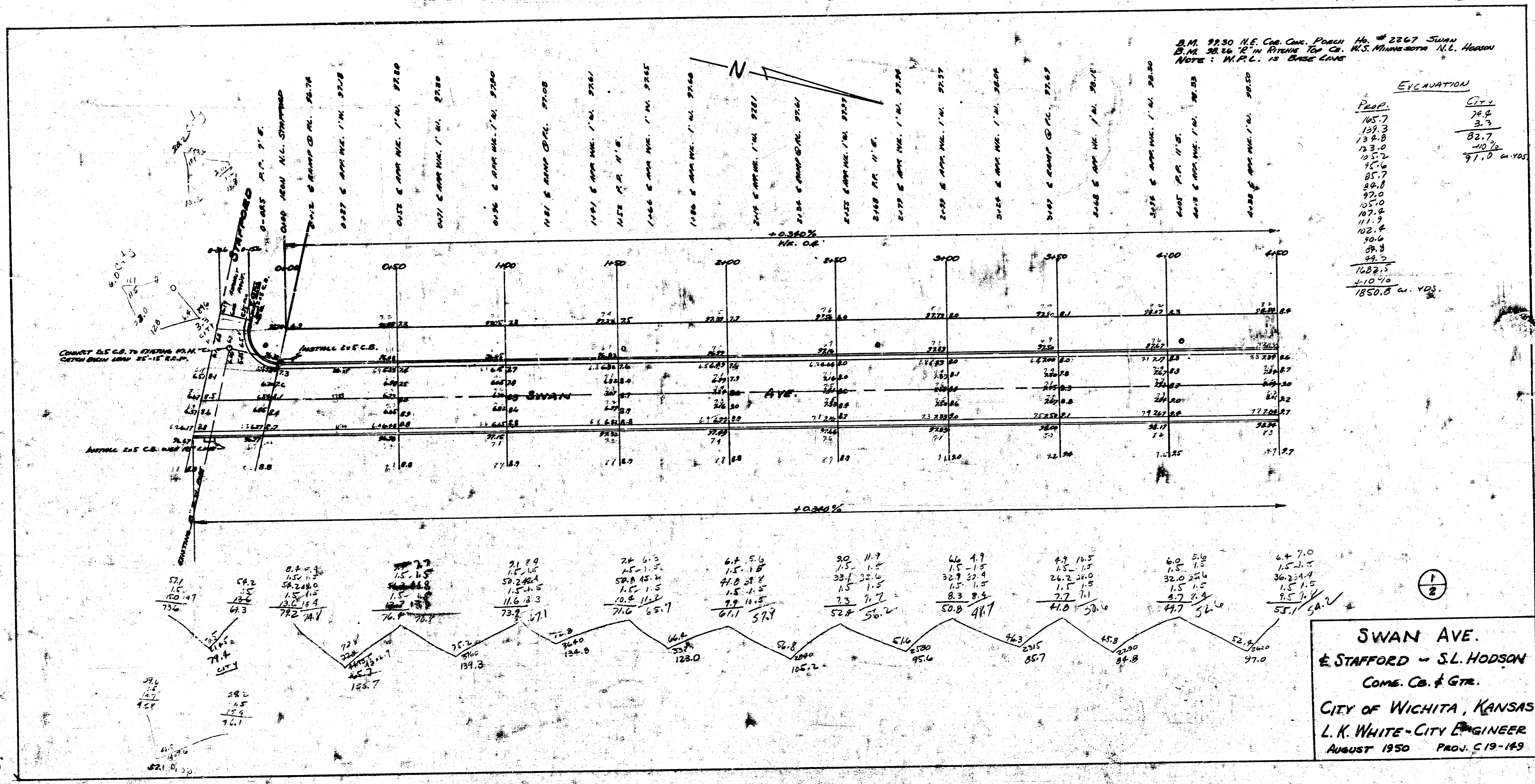


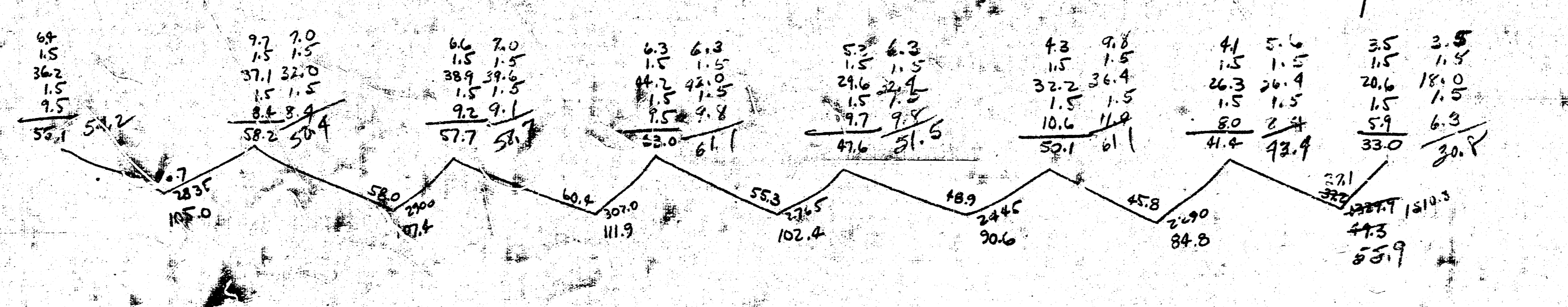
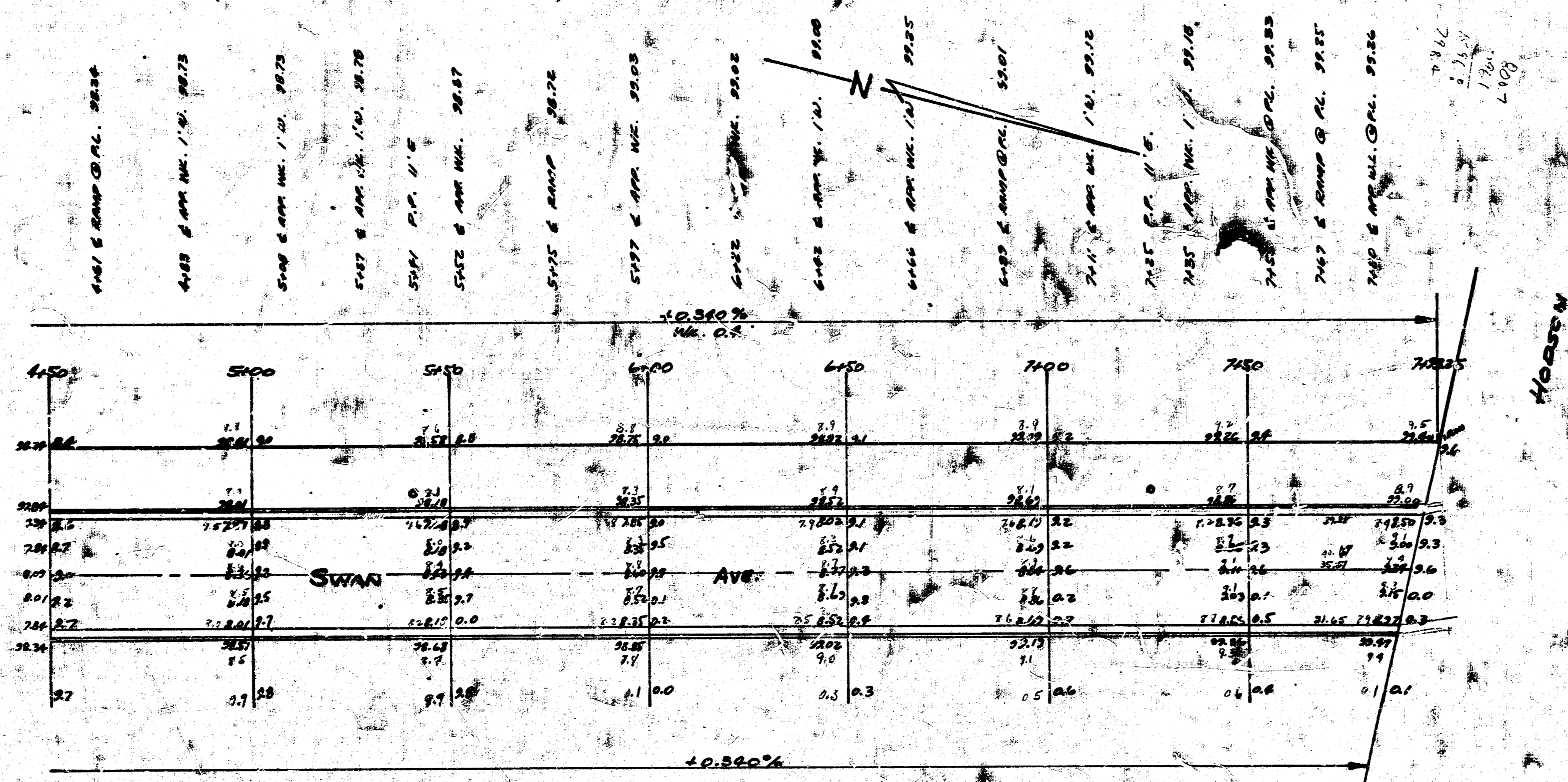
McG



B.M. 9230 N.E. Cor. Can. Parcel No. #2267 Swan
 B.M. 9231 12' W. of Pitman Top Co. N.S. Mansson N.L. Hodson
 NOTE: M.P.L. IS BASE ELEV.

ELEVATION	
PROP.	CITY
145.7	145.7
139.3	139.3
134.8	134.8
123.0	123.0
103.2	103.2
95.6	95.6
85.7	85.7
80.8	80.8
92.0	92.0
105.0	105.0
107.4	107.4
111.9	111.9
102.4	102.4
90.6	90.6
89.3	89.3
89.2	89.2
1082.5	
+10.70	
1850.6	1850.6 cu. yds.

B.M. 35.20 N.E. Cor. C&N. P&N No. 2267 Swan
 C.M.P. 25.26 "K" in Retention Top G. W.S. Minnesota M.L. Holson



2/2

4 e 5 1a