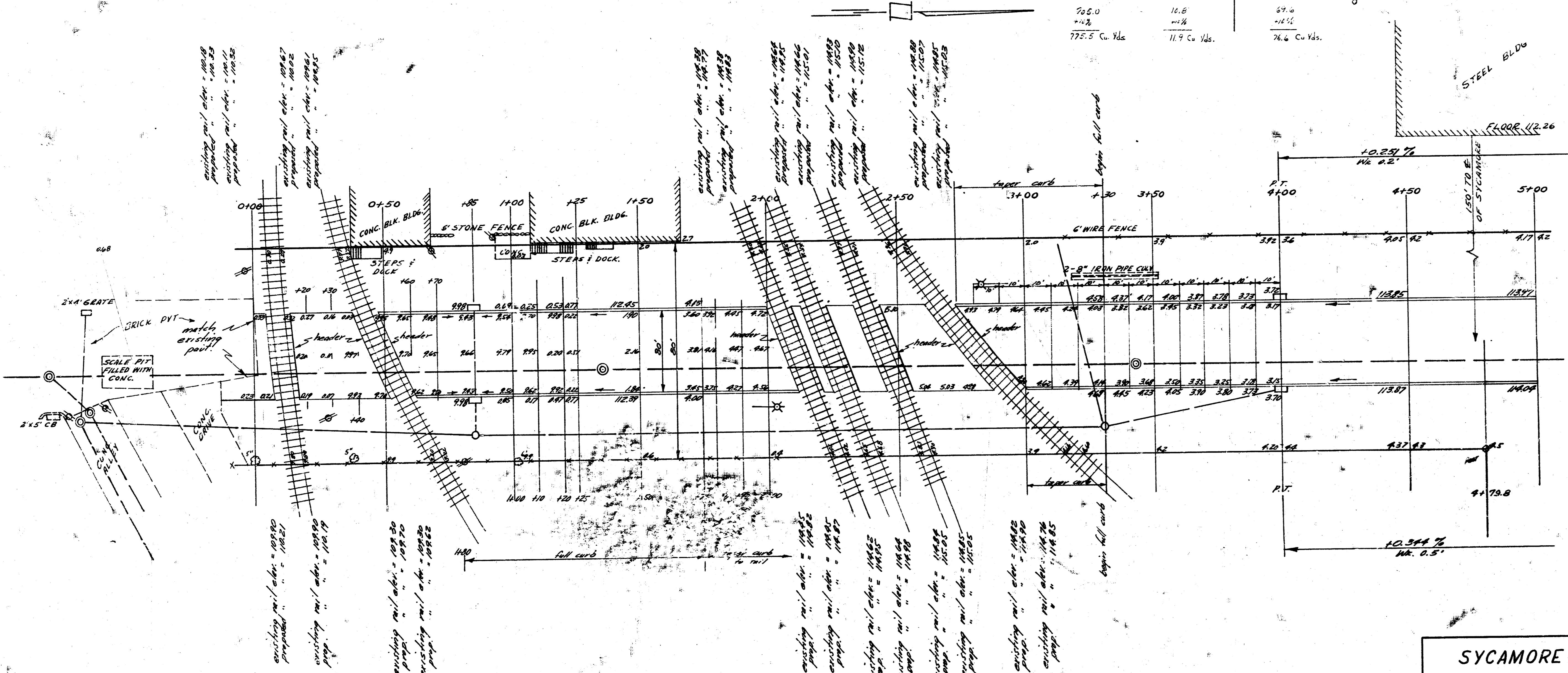
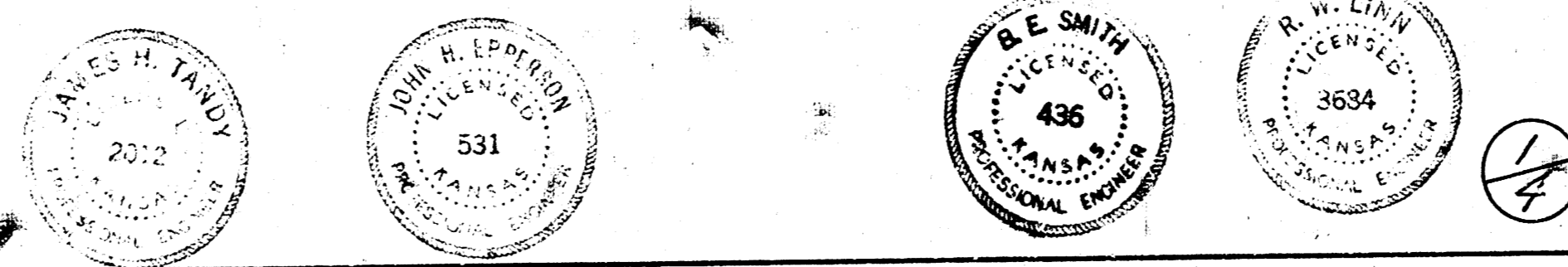


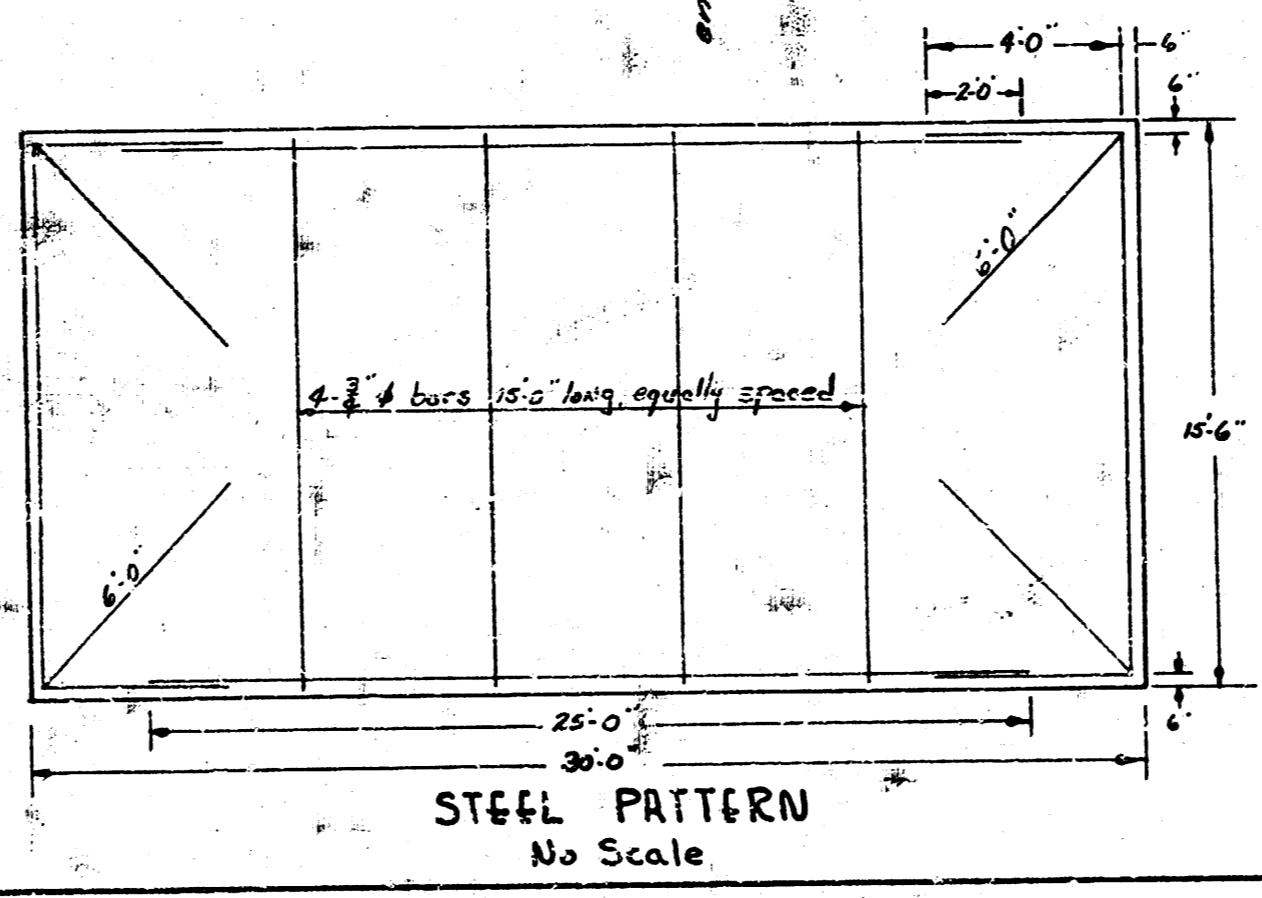
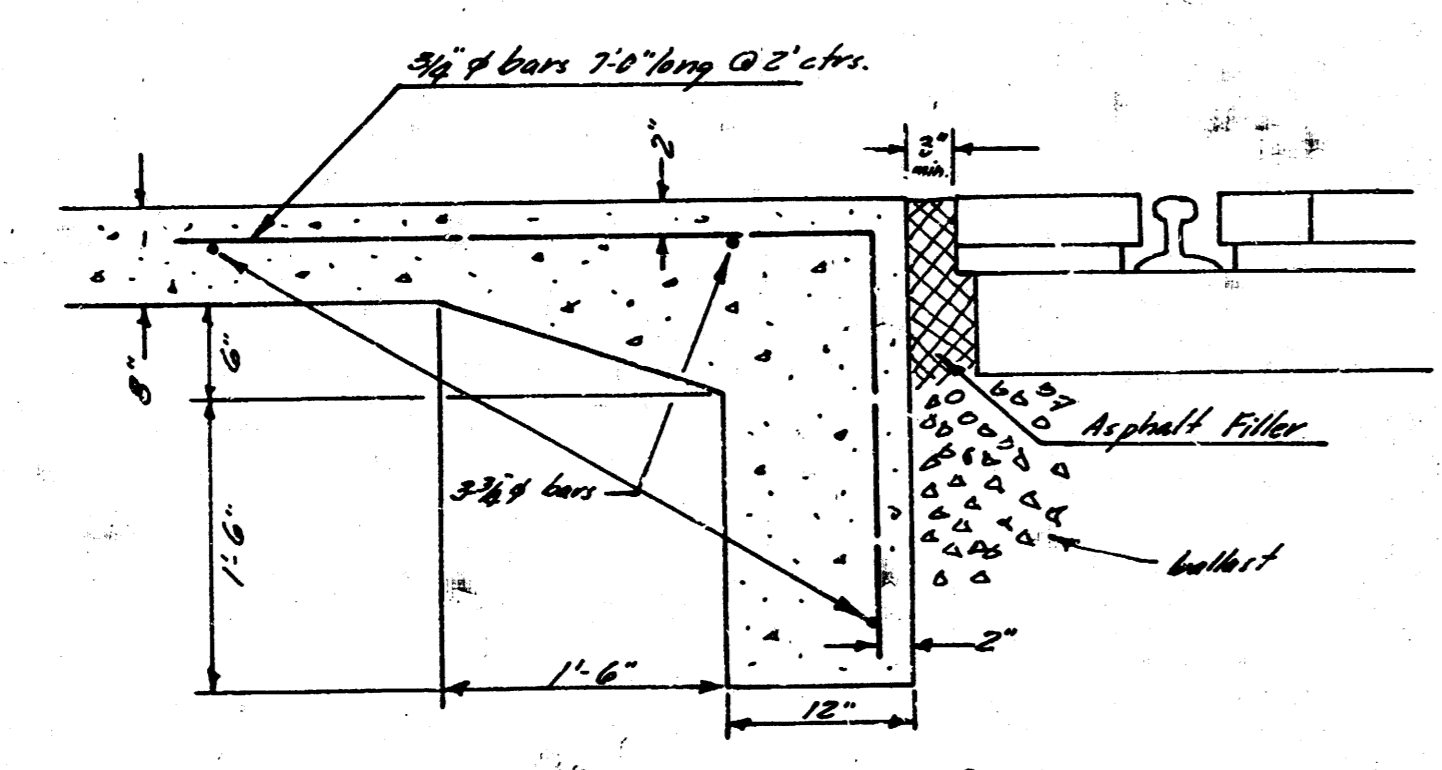
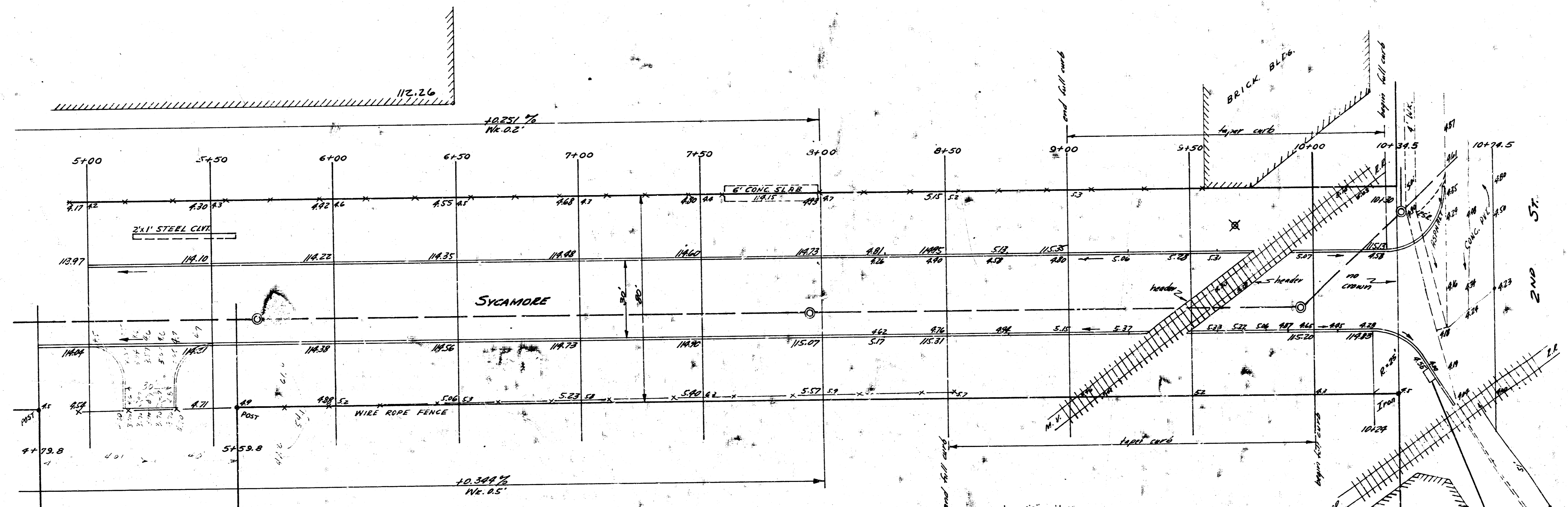
B.M. 100.87 IRON IN THIMBLE CTR. SYCAMORE & 55 PEARL  
 B.M. 113.93 IRON IN THIMBLE CTR. SYCAMORE & 2ND  
 STATIONING & BASE LINE ON CENTER LINE

Excavation		Fill	
Prep.	City	Prep.	City
755.0	16.6	67.0	0
+1.2	+1.2	+1.2	0
775.5 Cu Yds.	11.9 Cu Yds.	76.6 Cu Yds.	0



**SYCAMORE AVE.**  
 SL. MISSOURI PACIFIC RR. TO SL. 2<sup>ND</sup>  
 30' CONC & CB - 8"  
 CITY OF WICHITA KANS.  
 BE SMITH CITY ENGINEER  
 SEPT. 1958, PROJ NO. C17-120

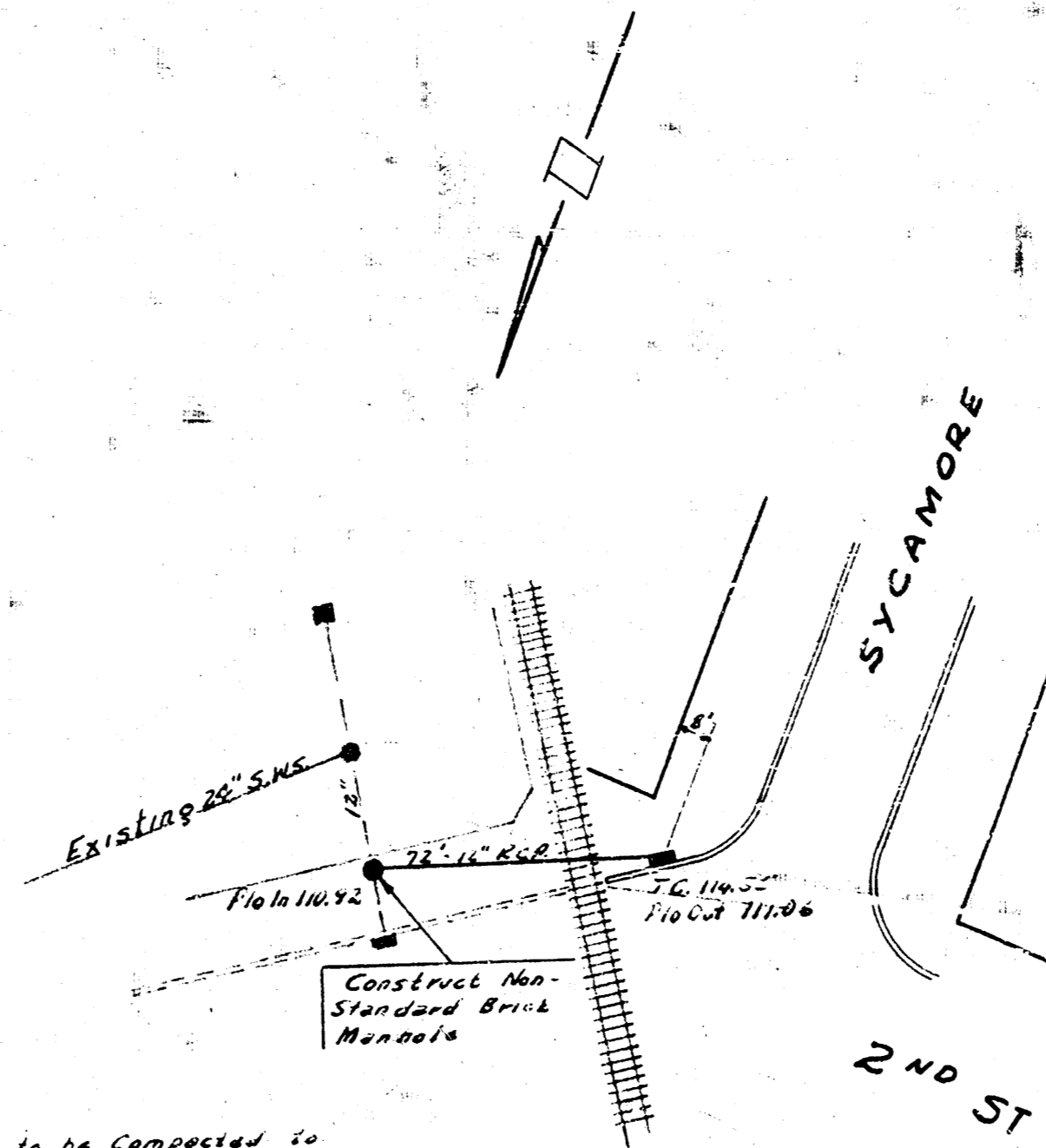
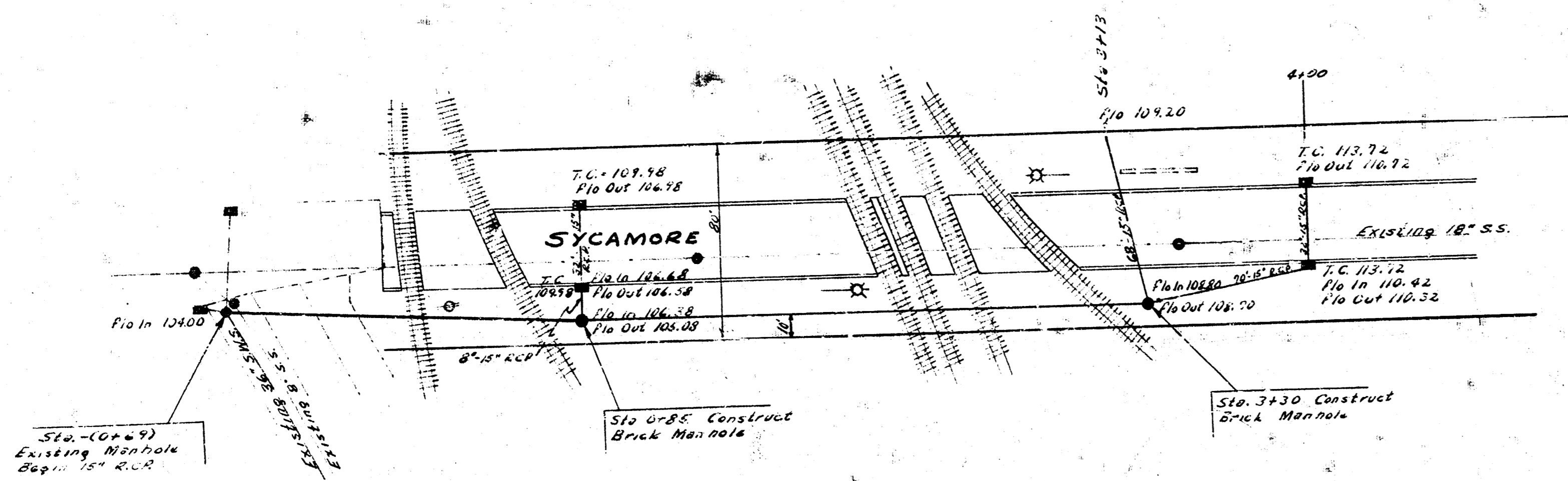




2/4 SYCAMORE AVE.  
PROJ. C17-120

BM 109.57 IRON IN THIMBLE CTR SYCAMORE 1 SS PEARL  
 BM 113.54 IRON IN THIMBLE CTR SYCAMORE 1 208

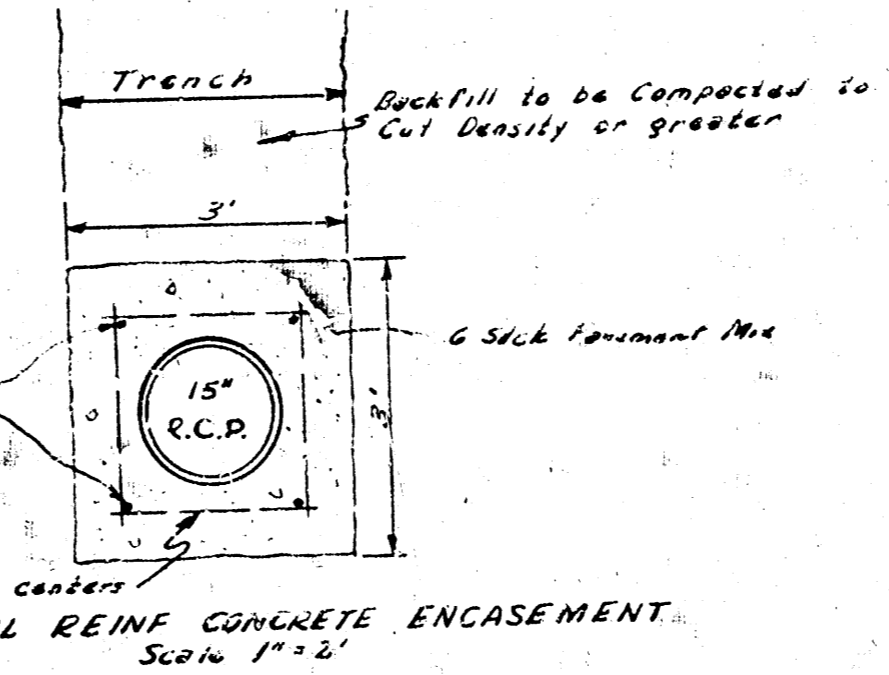
Scale 1"=40'



Sta. (0+49) Existing Manhole Depth 15' 6 1/2"

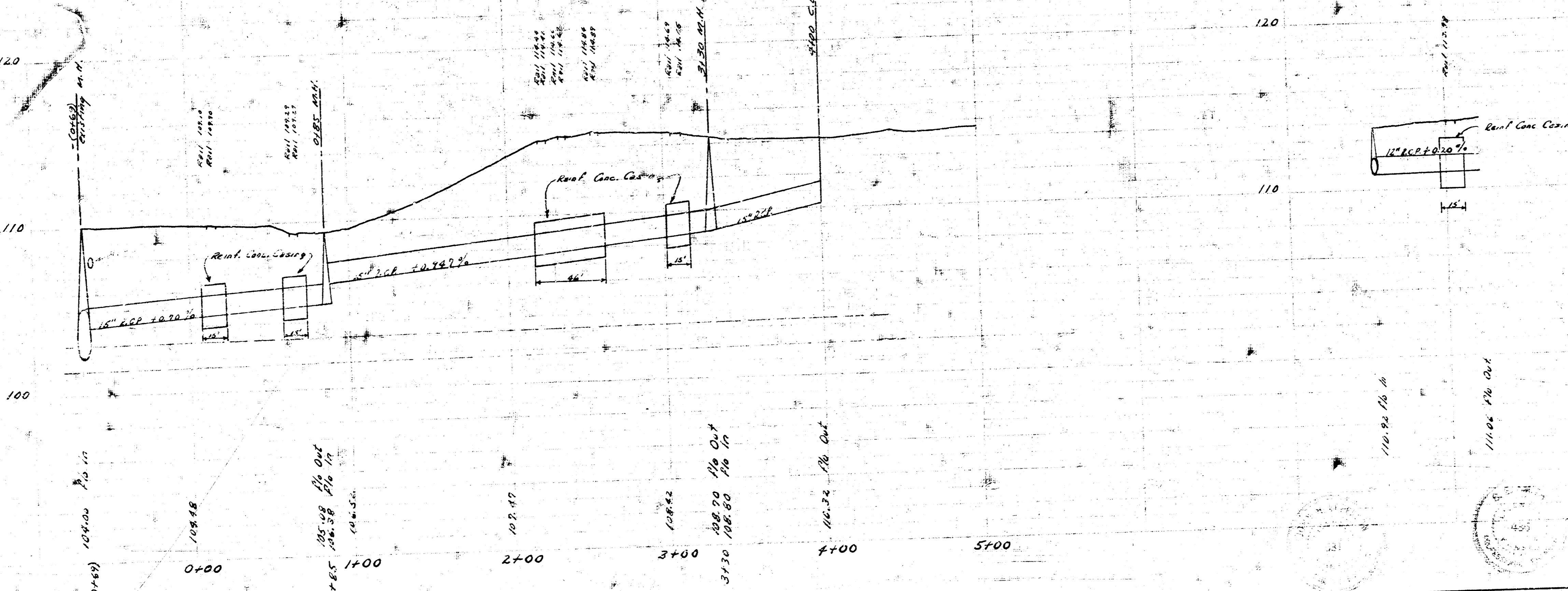
Sta. 0+85 Construct Brick Manhole

Sta. 3+30 Construct Brick Manhole



Pipe is to be installed by open ditch method with tracks removed which will not disrupt train traffic. The Contractor shall give proper notice to the R.R. to remove telegraph, etc., while the opening is being made. The expense of removing and replacing tracks and all other charges made by the R.R. will be paid by the Contractor. E.R. changes, water, sand, steel, and all other costs of casing shall be included in the bid of joint case encasement.

NOTE: Bid price of sand fill is to include cost of hauling where sand is used. If excavated material is suitable for backfill, the cost of hauling will be paid.



INCIDENTAL DRAINAGE  
 SYCAMORE AVE.  
 SL MISSOURI PACIFIC RR-TO-SL 2<sup>ND</sup>  
 CITY OF WICHITA KAN.  
 BE SMITH CITY ENGINEER  
 SEPT. 1958 PROJ. NO. C17-120