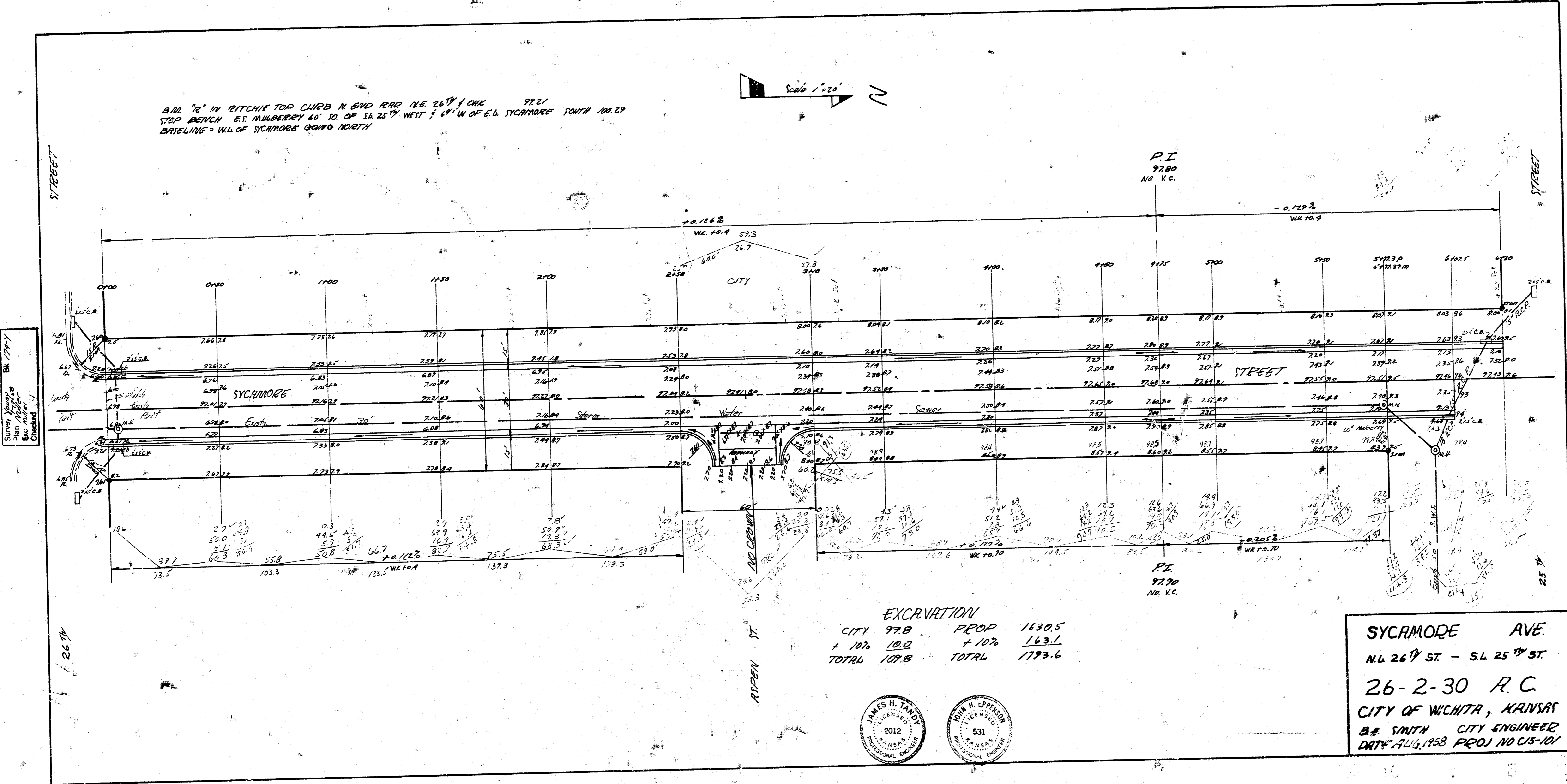
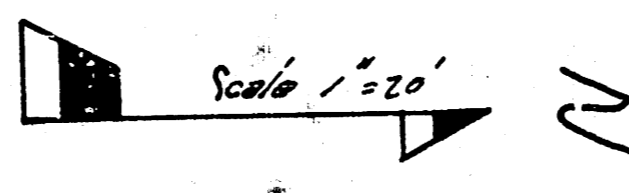


BAR 72" IN RITCHIE TOO CURB N END ROAD N.E. 26TH COR. 9221
 STEP BENCH E.T. MULBERRY 45' 10" OF S.L. 25TH WEST 7' 49" W. OF E.L. SYCAMORE SOUTH 100.29
 BENCHMARK - W.L. OF SYCAMORE CORNER NORTH



Survey Shows
Plain
City Engineer
City Engineer

EXCAVATION	
CITY	97.8
+ 10%	10.2
TOTAL	108.0
PROP	153.5
+ 10%	163.1
TOTAL	179.6

SYCAMORE AVE.
 N.E. 26TH ST - S.L. 25TH ST
26-2-30 R.C
 CITY OF WICHITA, KANSAS
 B.E. SMITH CITY ENGINEER
 DATE AUG. 1958 PROJ. NO. C15-101

