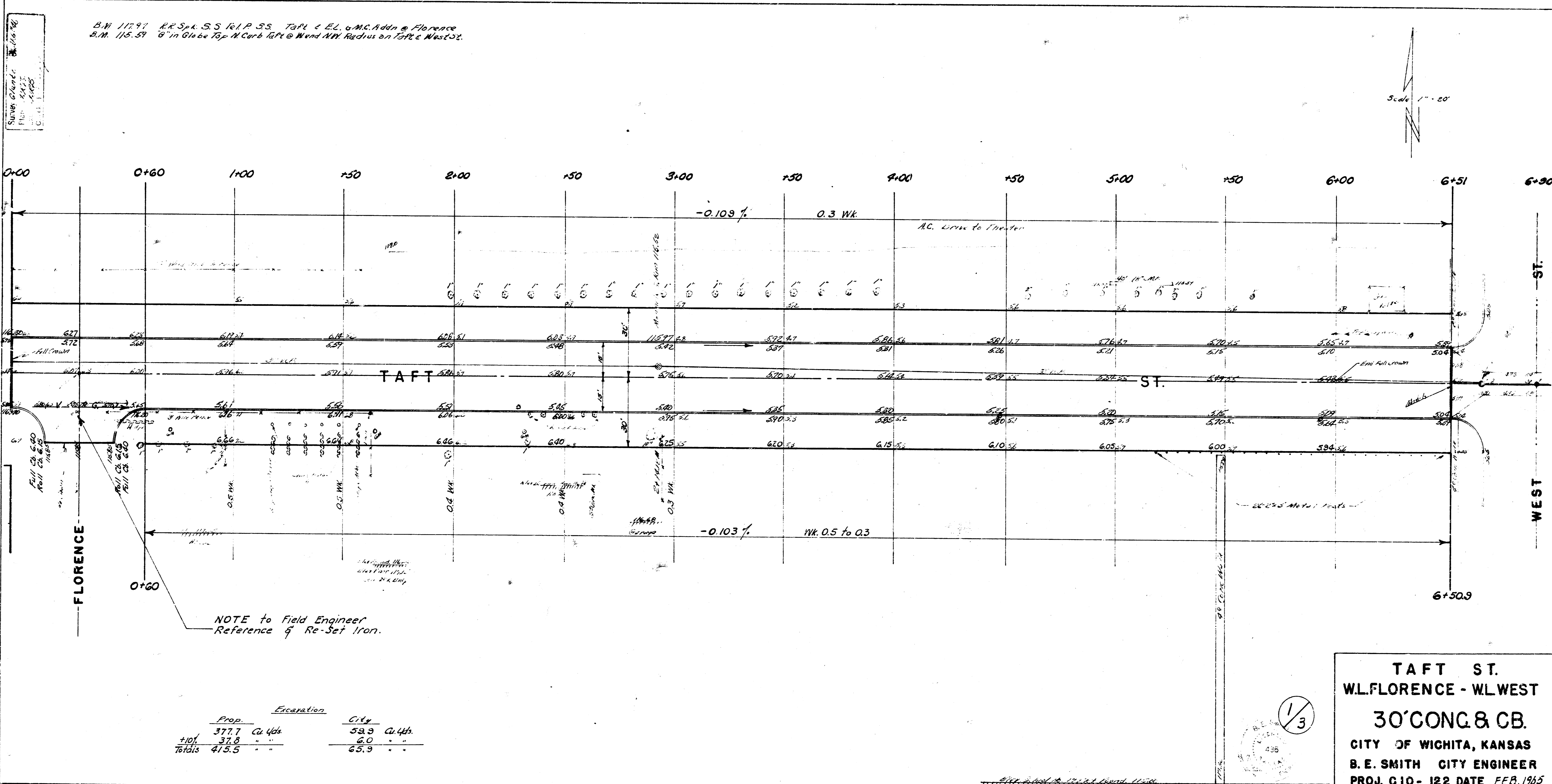


B.N. 11797 RR Spk. S.S. R.I.P. S.S. TAPL & EL. of M.C. Adm. & Florence
 B.M. 115.57 8" in Glass Top 1/4" Curb Left & Wnd 1/4" Radius on Left & West St.



NOTE to Field Engineer
 Reference to Re-Set Iron.

Excavation		City	
Prop.	City	Prop.	City
377.7	Ca. Yds.	58.9	Ca. Yds.
+101	37.8	6.0	..
Totals	415.5	64.9	..

Taft St.
W.L. FLORENCE - W.L. WEST
30' CONG. & CB.
 CITY OF WICHITA, KANSAS
 B. E. SMITH CITY ENGINEER
 PROJ. C10-122 DATE FEB. 1965

1/3