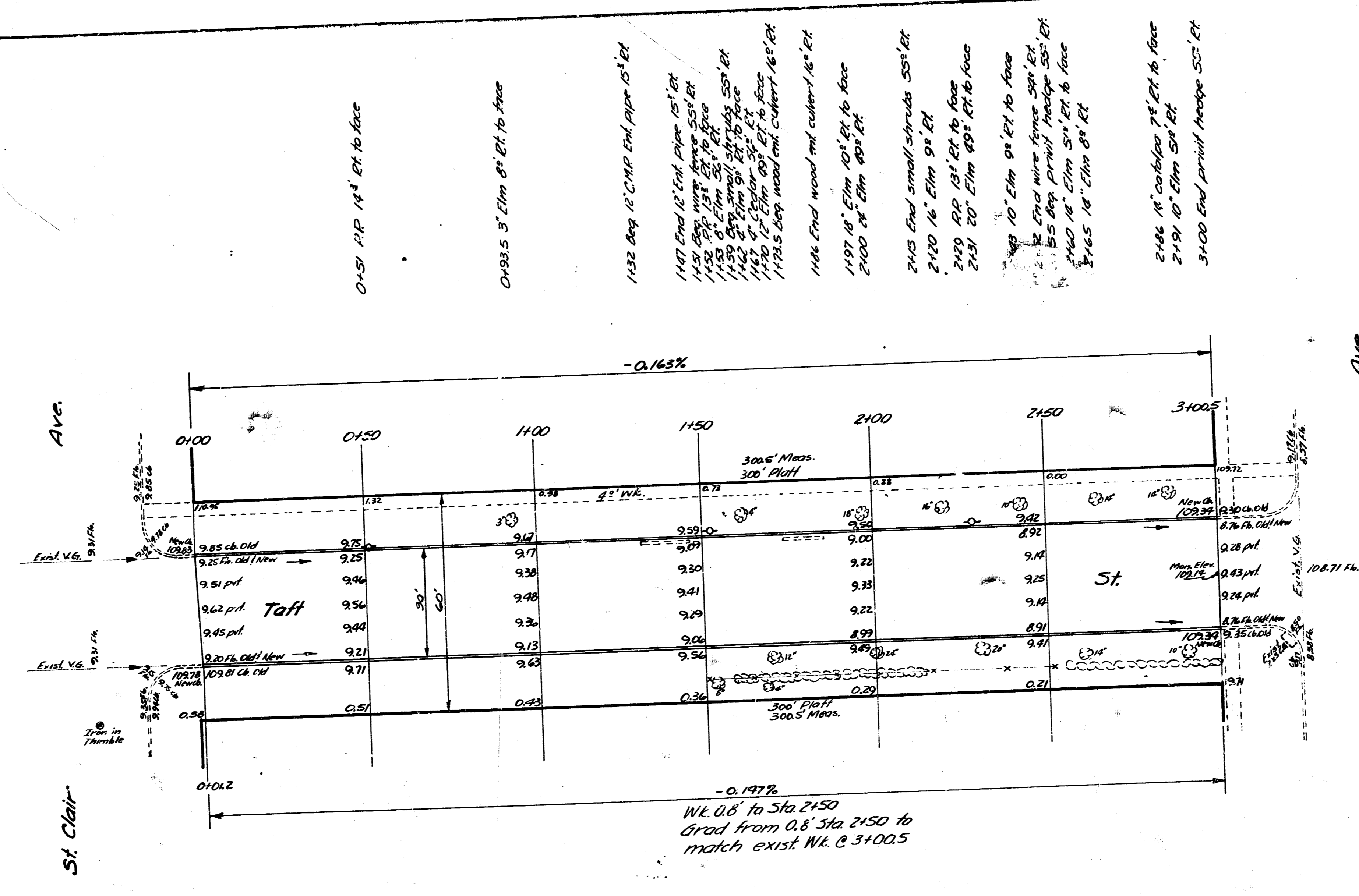


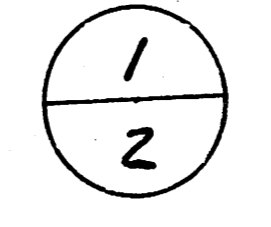
341 109.58 Iron in Triangle Clair & S.L. Taft

NOTE: Base line is bk. of Wk. on N1/2



WE 0.8 to Sta 2150
 Grad from 0.8 Sta 2150 to
 match exist. Wk. @ 3+00.5

Survey No. 436
 Plan No. 1
 L.S. 01/15/53
 Checked by J. H. E.



TAFT ST.
 EL. ST. CLAIR TO W.L. EVERETT
 30' CONC. & CB.

CITY OF WICHITA, KANSAS
 B.E. SMITH CITY ENGINEER
 JAN. 22, 1953 PROJ. NO. C16-246

- 0+51 12" P. 14" ET. to face
- 0+83.5 3" Elm 8" ET. to face
- 1+32 8" 12" C.M.P. End pipe 12" ET.
- 1+47 End 12" Elm pipe 12" ET.
- 1+53 8" 12" C.M.P. End pipe 12" ET.
- 1+58 8" 12" C.M.P. End pipe 12" ET.
- 1+63 8" 12" C.M.P. End pipe 12" ET.
- 1+68 8" 12" C.M.P. End pipe 12" ET.
- 1+73 8" 12" C.M.P. End pipe 12" ET.
- 1+78 8" 12" C.M.P. End pipe 12" ET.
- 1+83 8" 12" C.M.P. End pipe 12" ET.
- 1+88 8" 12" C.M.P. End pipe 12" ET.
- 1+93 8" 12" C.M.P. End pipe 12" ET.
- 1+98 8" 12" C.M.P. End pipe 12" ET.
- 2+00 8" 12" C.M.P. End pipe 12" ET.
- 2+05 End small shrubs 55" ET.
- 2+10 16" Elm 9" ET.
- 2+15 16" Elm 9" ET.
- 2+20 20" Elm 8" ET. to face
- 2+25 20" Elm 8" ET. to face
- 2+30 20" Elm 8" ET. to face
- 2+35 20" Elm 8" ET. to face
- 2+40 20" Elm 8" ET. to face
- 2+45 20" Elm 8" ET. to face
- 2+50 20" Elm 8" ET. to face
- 2+55 20" Elm 8" ET. to face
- 2+60 20" Elm 8" ET. to face
- 2+65 20" Elm 8" ET. to face
- 2+70 20" Elm 8" ET. to face
- 2+75 20" Elm 8" ET. to face
- 2+80 20" Elm 8" ET. to face
- 2+85 20" Elm 8" ET. to face
- 2+90 20" Elm 8" ET. to face
- 2+95 20" Elm 8" ET. to face
- 3+00 End gravel Ancho 55" ET.