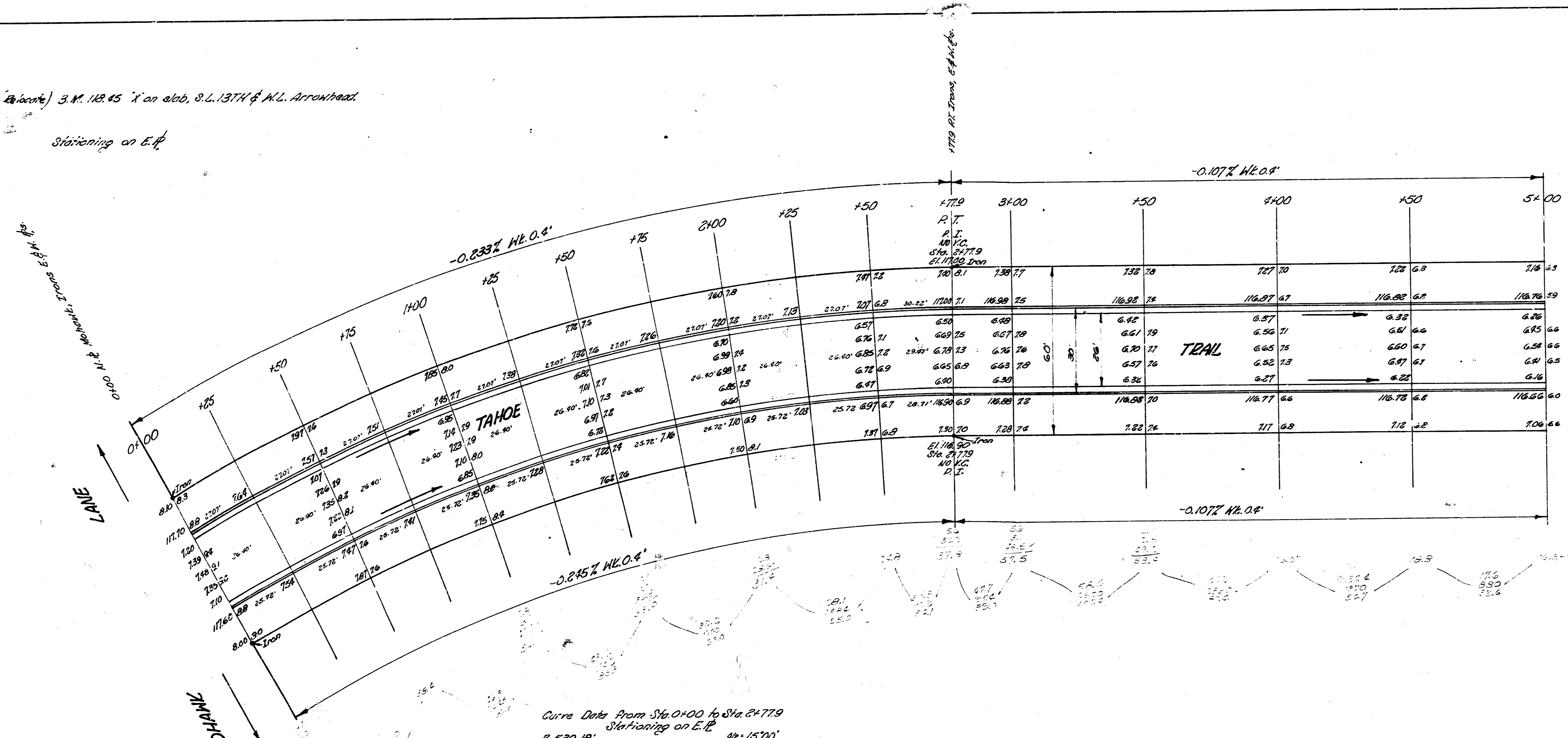


Station 3+18.15 X on slab, S.L. 1374 of W.L. Arrowhead.

Stationing on E.P.

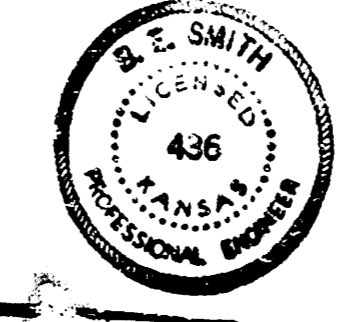


City Engineer
Bk. 2-7
Ex. 2-6
Checked J.T.

Curve Data From Sta. 0+00 to Sta. 2+77.9
Stationing on E.P.

STATION	ARC LENGTH P.C. TO P.T.	CHORD LENGTH P.C. TO P.T.	CHORD BEARING FROM P.C. TO P.T.	DEFLECTION	TOTAL DEFLECTION
0+00					
+25	25'	25.42'	87.90'	1° 21' 03"	1° 21' 03"
+50	50'	50.84'	87.80'	1° 21' 03"	2° 42' 06"
+75	75'	76.26'	87.70'	1° 21' 03"	3° 63' 09"
+100	100'	101.68'	87.60'	1° 21' 03"	4° 24' 12"
+125	125'	127.10'	87.50'	1° 21' 03"	5° 45' 15"
+150	150'	152.52'	87.40'	1° 21' 03"	6° 66' 18"
+175	175'	177.94'	87.30'	1° 21' 03"	7° 27' 21"
+200	200'	203.36'	87.20'	1° 21' 03"	8° 28' 24"
+225	225'	228.78'	87.10'	1° 21' 03"	9° 29' 27"
+250	250'	254.20'	87.00'	1° 21' 03"	10° 30' 30"
+275	275'	279.62'	86.90'	1° 21' 03"	11° 31' 33"
+300	300'	305.04'	86.80'	1° 21' 03"	12° 32' 36"
+325	325'	330.46'	86.70'	1° 21' 03"	13° 33' 39"
+350	350'	355.88'	86.60'	1° 21' 03"	14° 34' 42"
+375	375'	381.30'	86.50'	1° 21' 03"	15° 35' 45"
+400	400'	406.72'	86.40'	1° 21' 03"	16° 36' 48"
+425	425'	432.14'	86.30'	1° 21' 03"	17° 37' 51"
+450	450'	457.56'	86.20'	1° 21' 03"	18° 38' 54"
+475	475'	482.98'	86.10'	1° 21' 03"	19° 39' 57"
+500	500'	508.40'	86.00'	1° 21' 03"	20° 41' 00"

Scale
1" = 20'

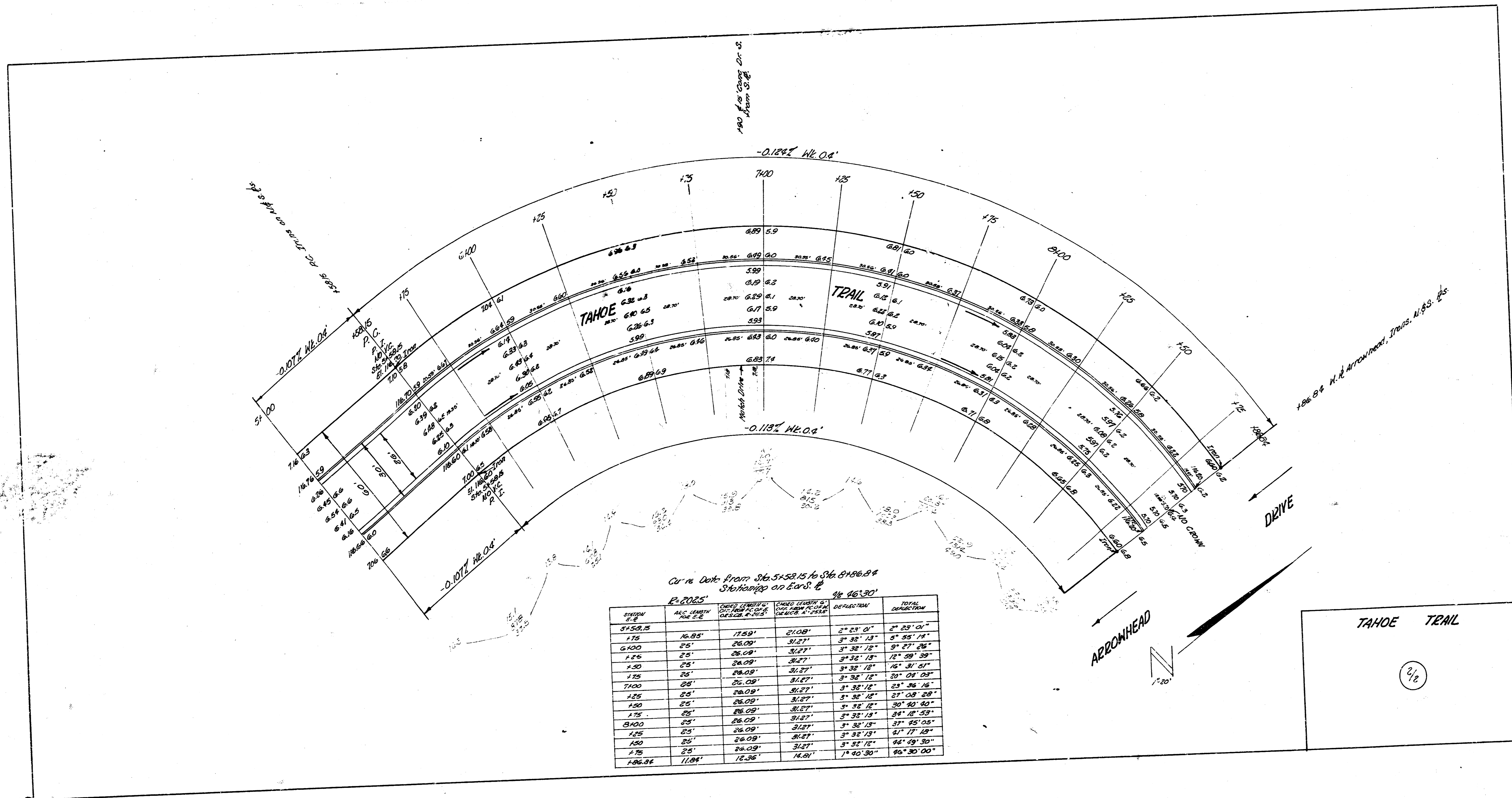


TAHOE TRAIL
N.L. MOWAT LANE TO W.L. ARROWHEAD DR.
26-230AC

CITY OF WICHITA, KANSAS

B.E. SMITH
Oct. 1953

CITY ENGINEER
Plan No. C.12-183



Curve Data from Sta 51+52.15 to Sta 0+96.84
Stationing on East of

STATION	ARC LENGTH FOR 25'	CHORD LENGTH FOR 25'	CHORD BEARING FOR 25'	CHORD DEFLECTION FOR 25'	TOTAL DEFLECTION
51+52.15	16.85'	17.59'	21.08°	2° 23' 01"	2° 23' 01"
175	26.09'	31.27'	31.27°	3° 32' 13"	5° 55' 14"
0+00	25'	26.09'	31.27°	3° 32' 13"	9° 27' 27"
1+25	25'	26.09'	31.27°	3° 32' 13"	12° 59' 40"
1+50	25'	26.09'	31.27°	3° 32' 13"	16° 31' 53"
1+75	25'	26.09'	31.27°	3° 32' 13"	20° 04' 06"
1+00	25'	26.09'	31.27°	3° 32' 13"	23° 36' 19"
0+00	25'	26.09'	31.27°	3° 32' 13"	27° 08' 32"
1+25	25'	26.09'	31.27°	3° 32' 13"	30° 40' 45"
1+50	25'	26.09'	31.27°	3° 32' 13"	34° 12' 58"
1+75	25'	26.09'	31.27°	3° 32' 13"	37° 45' 11"
1+00	25'	26.09'	31.27°	3° 32' 13"	41° 17' 24"
1+25	25'	26.09'	31.27°	3° 32' 13"	44° 49' 37"
1+50	25'	26.09'	31.27°	3° 32' 13"	48° 21' 50"
1+75	25'	26.09'	31.27°	3° 32' 13"	51° 54' 03"
1+00	25'	26.09'	31.27°	3° 32' 13"	55° 26' 16"
1+25	25'	26.09'	31.27°	3° 32' 13"	58° 58' 29"
1+50	25'	26.09'	31.27°	3° 32' 13"	62° 30' 42"
1+75	25'	26.09'	31.27°	3° 32' 13"	66° 02' 55"
1+00	25'	26.09'	31.27°	3° 32' 13"	69° 35' 08"
1+25	25'	26.09'	31.27°	3° 32' 13"	73° 07' 21"
1+50	25'	26.09'	31.27°	3° 32' 13"	76° 39' 34"
1+75	25'	26.09'	31.27°	3° 32' 13"	80° 11' 47"
1+00	25'	26.09'	31.27°	3° 32' 13"	83° 44' 00"

TAHOE TRAIL

2/2