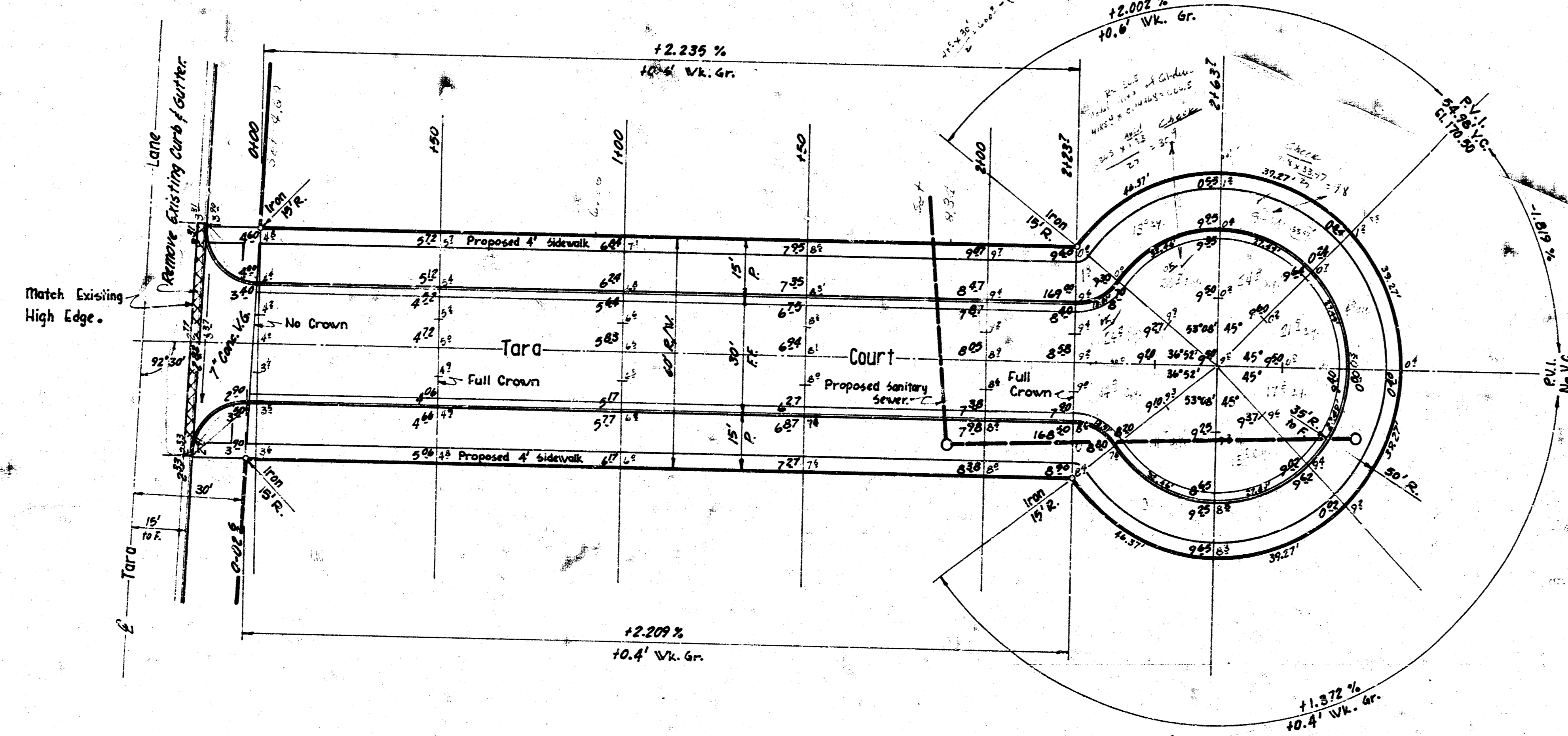


Note:
Contractor to clear right-of-way, grade parkings & compact fill for proposed sidewalk. Sidewalk to be constructed by others.

Scale: 1" = 20'



Earthwork

Excavation		Compacted Fill	
City	Property	City	Property
22.8 c.y.	687.6 c.y.	13.6 c.y. s&m.	218.2 c.y. s&m.
10%	2.5		
Total	24.1 c.y.		755.8 c.y.

Survey: Hansen 8-11-57
 Plan: Schmidt
 Exp: -
 Checked: -

B.M. 164.07 "a" cut in top of east curb of Tara Ln., 12' N. of N.L. Tara Court.
 B.M. 165.52 "x" cut in west end conc. base, light pole, 5' E. corner of Tara Ln. & Tipperary.
 Base Line - North Property Line.

Tara Court E.L. Tara Lane to & including Cul-de-sac
 26'-2'-30" Asphaltic Concrete
 City of Wichita, Kansas.
 B. E. Smith City Engineer
 Date: Sept., 1969 Project No. C19-7
 Sheet, 1 of 2

