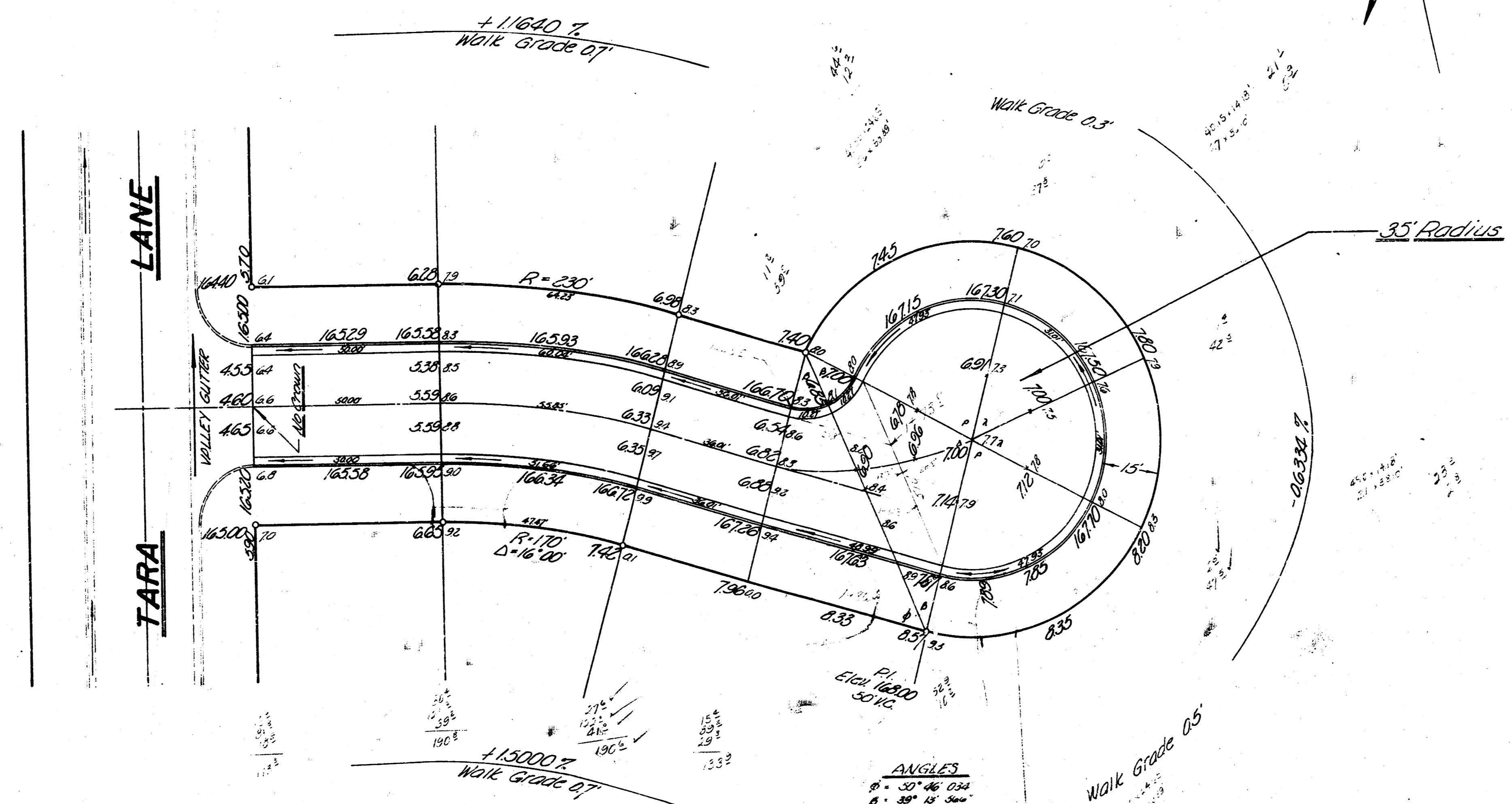
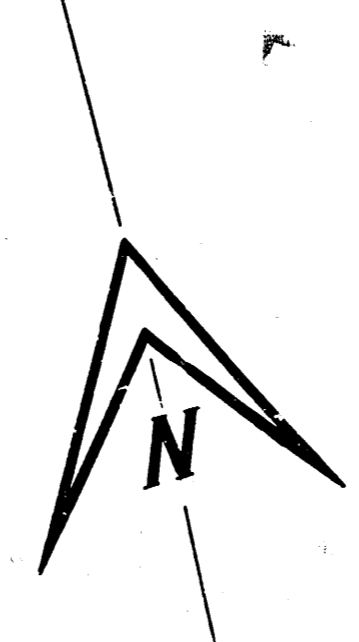


B.M. X-Cut in W. end cone base light pole, S.E. Tara Lane & Tipperary.



CHAS. W. SMITH  
 CIVIL ENGINEER

EXCAVATION

12210
12218
13308

ANGLES

- 1. 30° 46' 22"
- 2. 89° 12' 30"
- 3. 89° 12' 30"
- 4. 74° 27' 33"
- 5. 30° 46' 22"

**TARA COURT**  
 E.L. TARA LANE TO CUL-DE-SAC  
**26'-2'-30' A.C.**  
 CITY OF WICHITA, KANSAS  
 B.E. SMITH CITY ENGINEER  
 DATE: APRIL 1962 PROJ. NO. CII-56