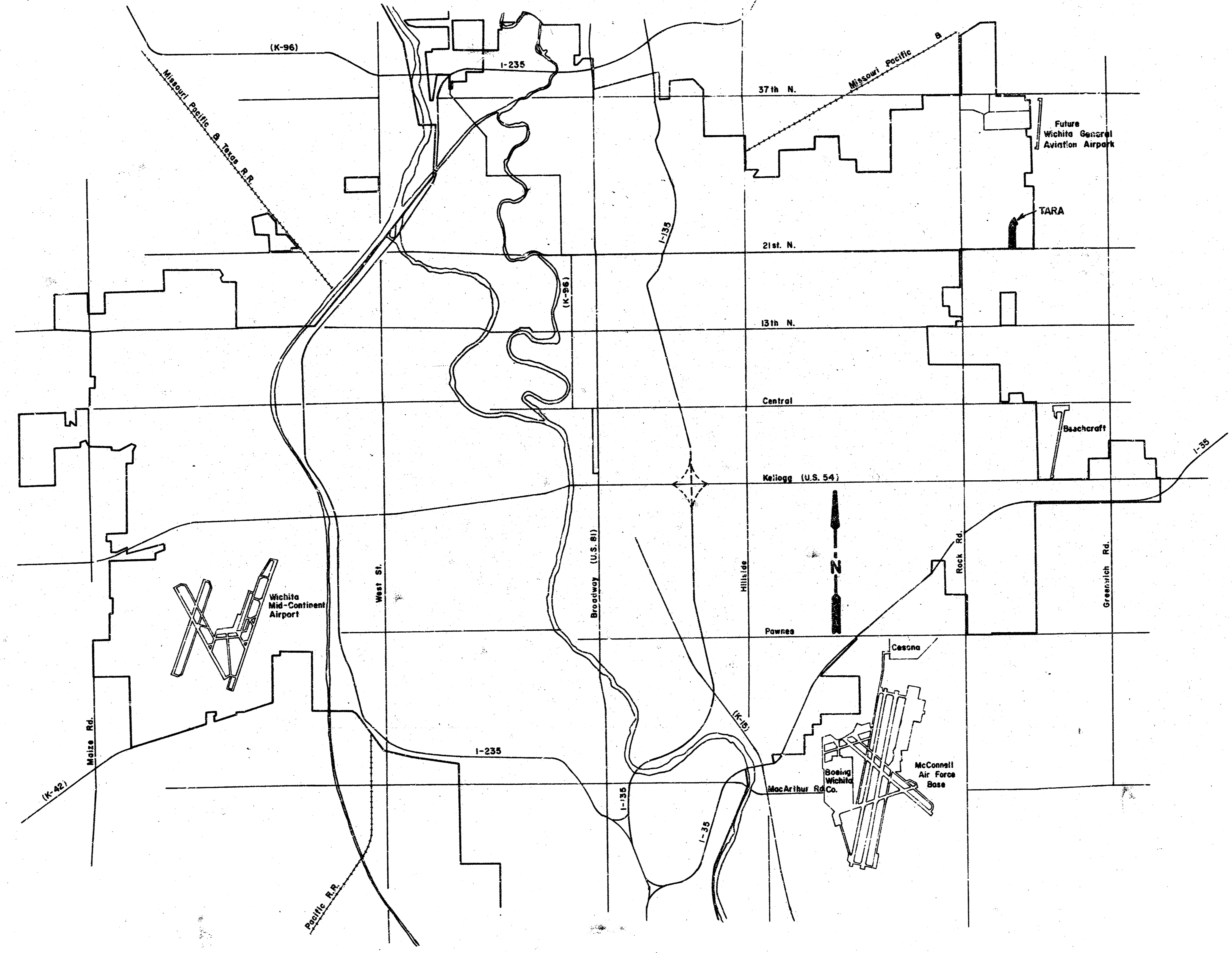
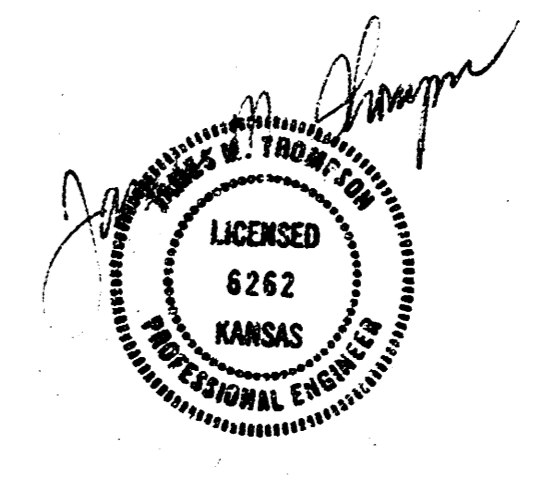


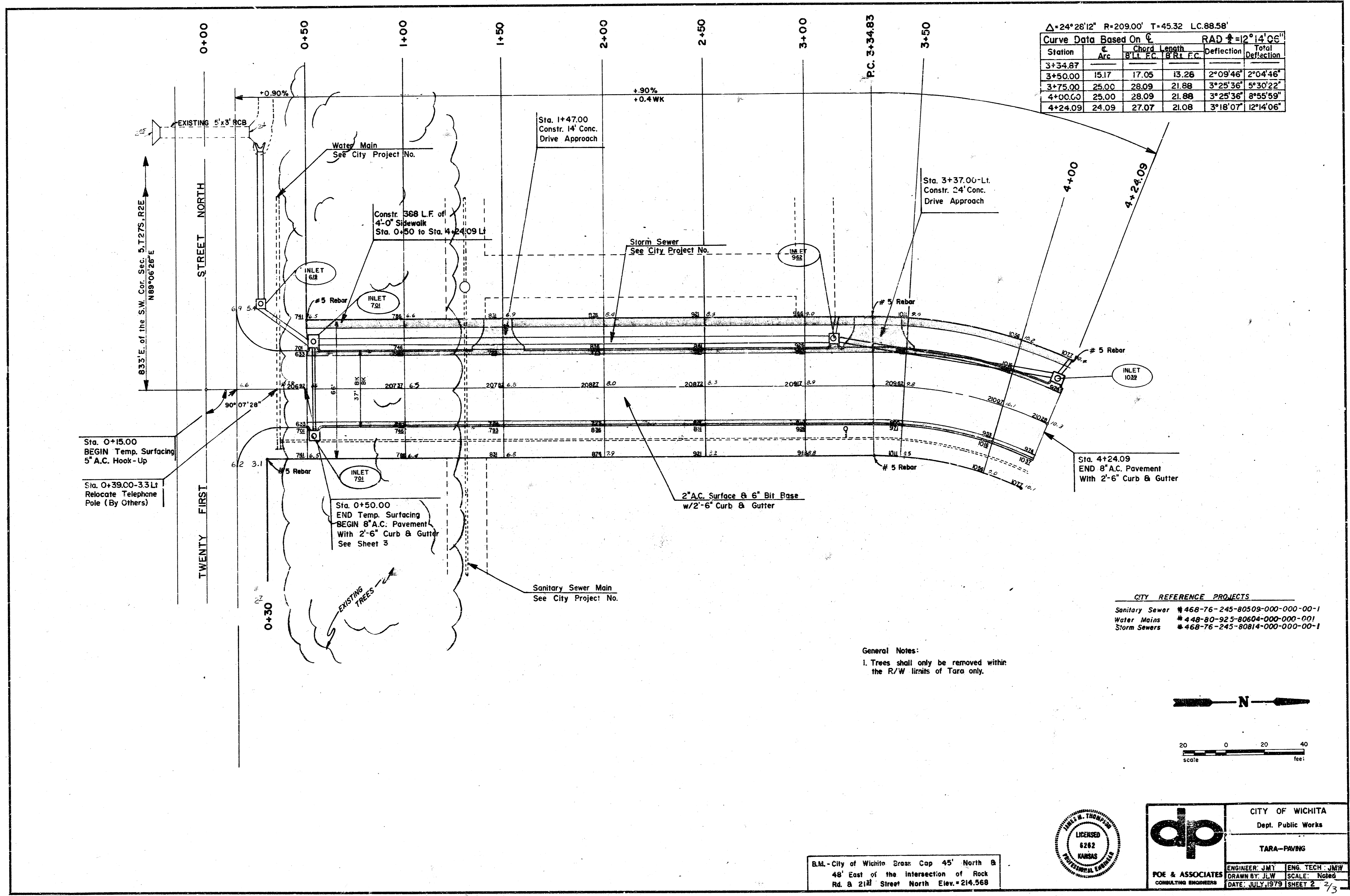
CITY OF WICHITA  
 Department of Public Works  
**TARA PAVING**  
 DEAN SELLERS-CITY ENGINEER  
 PROJECT NO. 472-76-245-80875-000-000-00-1



- INDEX TO DRAWINGS
- 1. Title Sheet
  - 2. Tara Paving
  - 3. Paving Details
  - 4. Tara - Cross Sections

**dp** POE & ASSOCIATES OF KANSAS, INC.  
 CONSULTING ENGINEERS





$\Delta=24^{\circ}28'12''$   $R=209.00'$   $T=45.32$   $LC=88.58'$

Curve Data Based On $\Delta$					
Station	C	Chord Length	PC	PT	Total Deflection
3+34.87					
3+50.00	15.17	17.05	13.26		$2^{\circ}09'46''$
3+75.00	25.00	28.09	21.88		$3^{\circ}25'36''$
4+00.00	25.00	28.09	21.88		$3^{\circ}25'36''$
4+24.09	24.09	27.07	21.08		$3^{\circ}18'07''$

Sta. 0+15.00  
BEGIN Temp. Surfacing  
5" A.C. Hook-Up

Sta. 0+39.00-3.3 Lt  
Relocate Telephone  
Pole (By Others)

Sta. 0+50.00  
END Temp. Surfacing  
BEGIN 8" A.C. Pavement  
With 2'-6" Curb & Gutter  
See Sheet 3

Sanitary Sewer Main  
See City Project No.

2" A.C. Surface & 6" Bit Base  
w/2'-6" Curb & Gutter

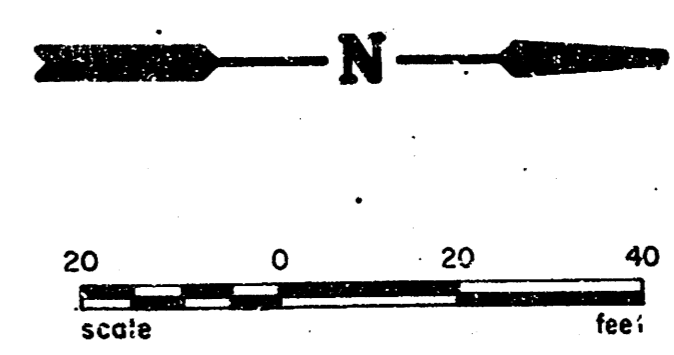
Sta. 3+37.00-Lt.  
Constr. 2' Conc.  
Drive Approach

Sta. 4+24.09  
END 8" A.C. Pavement  
With 2'-6" Curb & Gutter

General Notes:  
1. Trees shall only be removed within  
the R/W limits of Tara only.

CITY REFERENCE PROJECTS

Sanitary Sewer	# 468-76-245-80509-000-000-00-1
Water Mains	# 448-80-925-80604-000-000-001
Storm Sewers	# 468-76-245-80814-000-000-00-1



B.M. - City of Wichita Brass Cap 45' North &  
48' East of the intersection of Rock  
Rd. & 21st Street North Elev. = 214.568

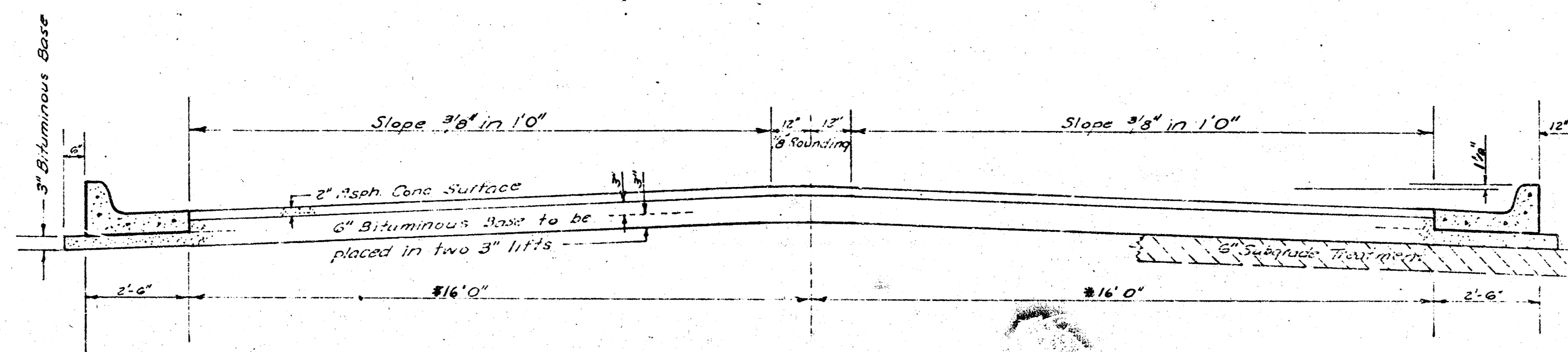


**dp**

CITY OF WICHITA  
Dept. Public Works

TARA-PAVING

ENGINEER JMT    ENG. TECH. JMW  
DRAWN BY JLW    SCALE: Noted  
DATE: JULY 1979    SHEET 2



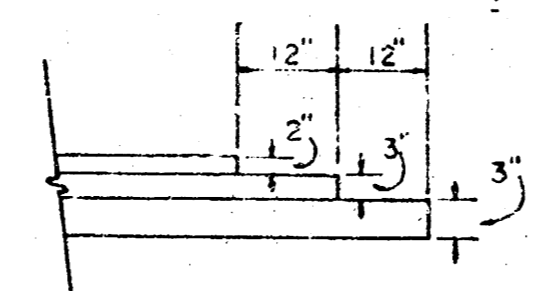
**TYPICAL SECTION**

**\*37' ASPHALTIC CONCRETE PAVEMENT WITH BITUMINOUS BASE**

A TACK COAT OF EMULSIFIED ASPHALT (SS-1H) SHALL BE APPLIED AT AN APPROXIMATE RATE 0.05 GALLONS PER SQ YD BETWEEN LIFTS OF ASPHALTIC MATERIALS WHEN ORDERED BY THE ENGINEER. TACK COAT WILL NOT BE PAID FOR DIRECTLY AND SHALL BE CONSIDERED AS SUBSIDIARY TO PRICE BID FOR ASPHALTIC PAVEMENT.

BITUMINOUS BASE AND ASPHALTIC CONCRETE WEARING SURFACE SHALL BE PLACED WITH A LAYDOWN MACHINE HAVING AUTOMATIC ELECTRONIC CONTROLS FOR CROWN AND GRADE. CONSTRUCTION JOINTS IN EACH LIFT SHALL BE STAGGERED A MINIMUM DISTANCE OF 1' WITH JOINTS IN PRECEDING LIFTS AND PLACED SUCH THAT A JOINT WILL BE CONSTRUCTED ON THE CENTERLINE IN THE TOP LIFT.

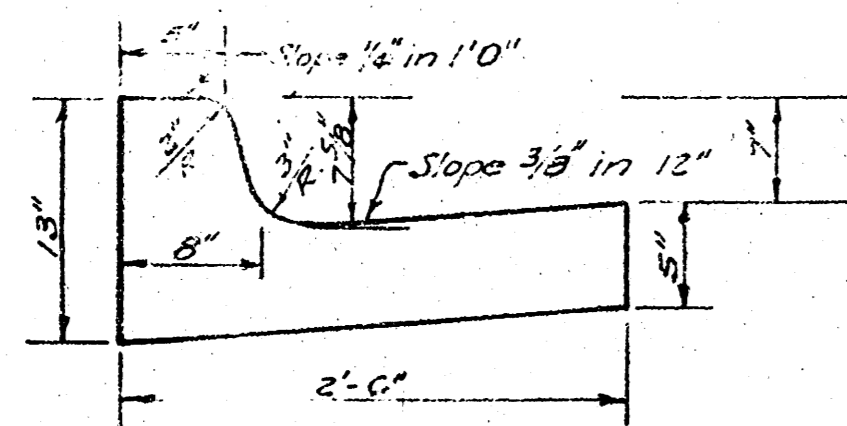
**DETAIL OF TRANSVERSE CONSTRUCTION JOINTS**



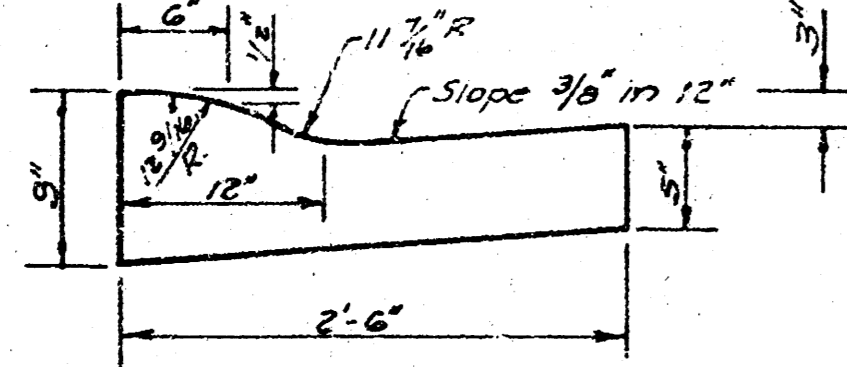
TRANSVERSE CONSTRUCTION JOINTS SHALL BE CONSTRUCTED IN FLEXIBLE BASE PAVEMENTS AT LOCATIONS WHERE PAVEMENT TEMPORARILY ENDS TO FACILITATE FUTURE PAVEMENT CONSTRUCTION AS SHOWN BY DETAIL. THE COST OF CONSTRUCTING THE TRANSVERSE CONSTRUCTION JOINTS SHALL NOT BE MEASURED OR PAID FOR DIRECTLY BUT SHALL BE INCLUDED IN THE BID PRICE FOR SQUARE YARDS OF ASPHALTIC CONCRETE PAVEMENT.

*The A.C. Pavement between the curb & gutter shall be paid as Sq.Yds. 8" A.C. Pavement (6" Bituminous Base).  
The Bituminous Base under the curb & gutter shall be paid as Sq.Yds. 3" Bituminous Base.*

**COMBINED CURB & GUTTER**



**ROLL TYPE CURB & GUTTER**



**CITY OF WICHITA KANSAS**

DEPARTMENT of PUBLIC WORKS - Engineering Division

R. W. LINN CITY ENGINEER

DATE JULY, 1979 Proj. No.

Sht 3 of 4 Shts

\*35' b/b Revised for 37' b/b by Poe & Associates of Kansas