

PAVING PLANS FOR
TEAL COVE THIRD

**OAKMOUNT: FROM THE WEST LINE OF LOT 16, BLOCK 1,
TO THE WEST LINE OF RUSHWOOD**

**CRANBERRY: FROM THE WEST LINE OF LOT 16, BLOCK 1,
TO THE WEST LINE OF RUSHWOOD**

PROJECT NO. 472-81941

CITY OF WICHITA, KANSAS
MICHAEL E. LINDEBAK, CITY ENGINEER

INDEX NO. 760879

GENERAL NOTES

- UNLESS SHOWN OR STATED OTHERWISE ON THESE DRAWINGS, MATERIALS AND CONSTRUCTION SHALL BE IN ACCORDANCE WITH CITY OF WICHITA CONCRETE PAVEMENT AND ASPHALTIC CONCRETE PAVEMENT SPECIFICATIONS.
- THE CONTRACTOR SHALL BE RESPONSIBLE FOR PRESERVING PROPERTY IRONS. THE CONTRACTOR WILL BE REQUIRED TO RE-ESTABLISH ANY PROPERTY IRONS WHICH ARE DAMAGED OR DESTROYED BY HIS CONSTRUCTION OPERATIONS. SUCH IRONS SHALL BE RE-ESTABLISHED BY A LICENSED LAND SURVEYOR IN ACCORDANCE WITH STATE LAWS.
- EXISTING UTILITIES AND THEIR LOCATIONS, AS SHOWN ON THE PLANS REPRESENT THE BEST INFORMATION OBTAINABLE FOR DESIGN. LOCATION INFORMATION HAS BEEN OBTAINED FROM THE VARIOUS UTILITY COMPANIES AND IS EITHER FROM COMPANY RECORD DRAWINGS OR COMPANY PROVIDED FIELD LOCATIONS. THE PLAN LOCATIONS SHOWN ARE NOT GUARANTEED. ADDITIONAL EXISTING UTILITIES MAY ALSO BE ENCOUNTERED.
- CONTRACTOR WILL BE REQUIRED TO PROVIDE A MINIMUM ADVANCE NOTICE OF FORTY- EIGHT (48) HOURS TO UTILITY COMPANIES PRIOR TO STARTING ANY EXCAVATION AS FOLLOWS:

KANSAS ONE-CALL 1-800-344-7233
OR 687-2470 (LOCAL WICHITA)

THE CONTRACTOR MUST NOTIFY THE FOLLOWING IN CASE OF AN EMERGENCY:

SOUTHWESTERN BELL TELEPHONE COMPANY	1-571-2115
CABLEVISION	262-4270 OR 263-2061
KPL GAS SERVICE COMPANY	263-7511
KANSAS GAS & ELECTRIC	264-1141
CITY OF WICHITA WATER DEPARTMENT	268-4808
CITY OF WICHITA SEWER MAINTENANCE	268-4808
ARKLA GAS COMPANY	942-8350 OR 263-8161

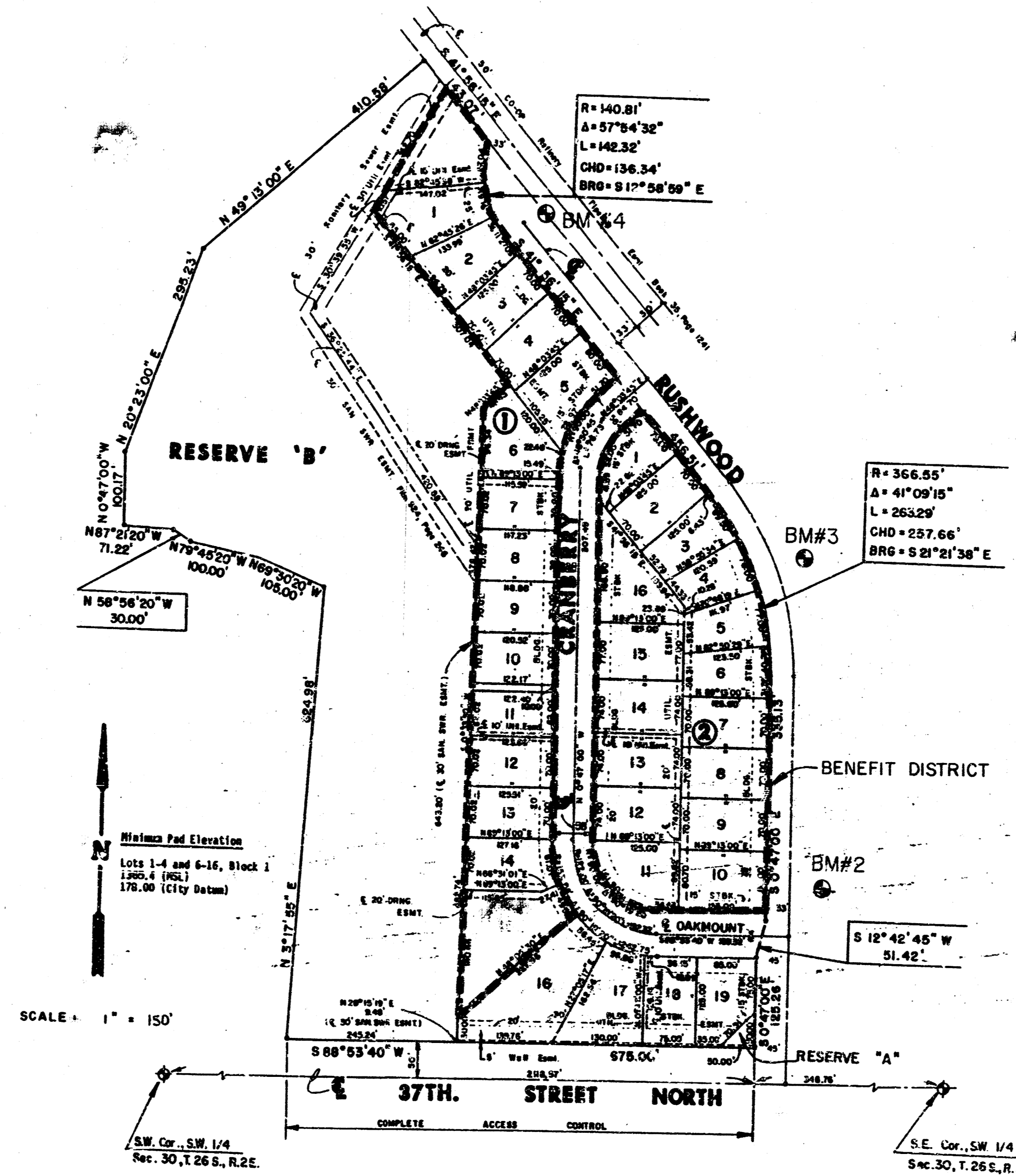
- RUBBLE FROM THE REMOVAL OF MISCELLANEOUS STRUCTURES AND EXCESS EXCAVATION WHICH IS TO BE WASTED SHALL BE DISPOSED OF ON SITES TO BE PROVIDED BY THE CONTRACTOR. THESE SITES SHALL BE APPROVED BY THE ENGINEER AS TO SUITABILITY, APPEARANCE AND SITE LOCATION. LOCATIONS THAT, IN THE OPINION OF THE ENGINEER, WILL LEAVE AN UNSIGHTLY APPEARANCE WILL NOT BE APPROVED.
- THIS PROJECT INCLUDES A CERTAIN AMOUNT OF FULL TYPE CURB CONSTRUCTION. FULL CURBS SHALL BE DEPRESSED THROUGH ALL DRIVEWAY OPENINGS WHEN SUCH DRIVES ARE CONSTRUCTED AS A PART OF THE PROJECT. NO MORE THAN 2 DRIVES 20 FEET IN WIDTH OR EQUIVALENT COMBINATIONS THEREOF ARE TO BE CONSTRUCTED WITH THIS PROJECT.
- A SAW CUT OF AT LEAST ONE-HALF THE DEPTH OF EXISTING SURFACE COURSES OR ONE-FOURTH THE DEPTH OF THE EXISTING TOTAL PAVEMENT THICKNESS SHALL BE PROVIDED AT LOCATIONS WHERE PROPOSED CONSTRUCTION ABUTS AN EXISTING SURFACE COURSE OR PAVEMENT FOR WHICH PARTIAL REMOVAL OF THAT SURFACE OR PAVEMENT IS REQUIRED. SAW JOINT TO FACILITATE REMOVAL WITHIN THREE (3) FEET OF EXISTING JOINTS WILL NOT BE PERMITTED AND FOR SUCH INSTANCES THE LIMITS OF REMOVAL SHALL EXTEND TO THE EXISTING JOINT. SUCH SAW CUTS WILL NOT BE PAID FOR DIRECTLY AND THIS COST SHALL BE CONSIDERED AS SUBSIDIARY TO THE REMOVAL OF SURFACE OR PAVEMENT.
- INLET HOOKUP SHALL BE PAID AS EACH, REGARDLESS OF THE SIZE OF INLET.

BENCH MARKS

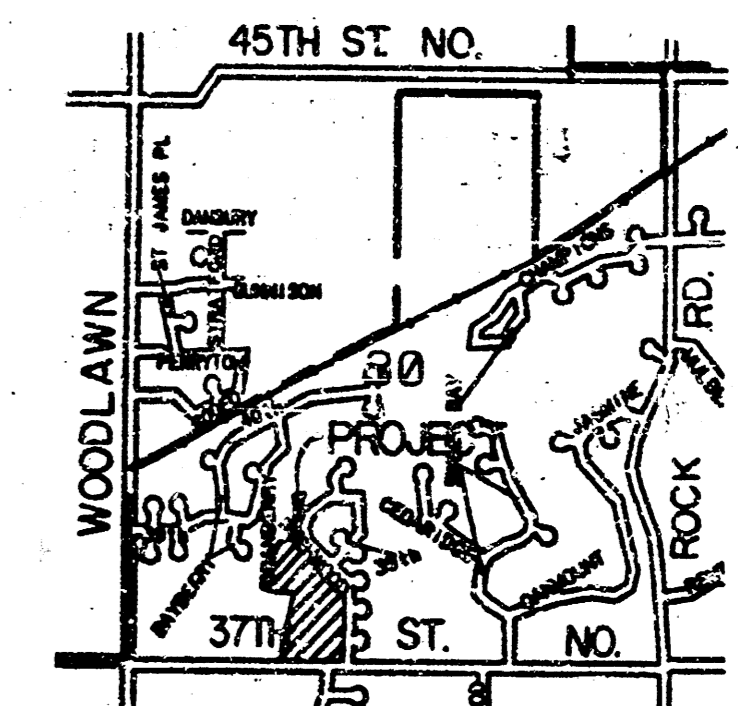
- B.M. #1 City of Wichita B.M. Disc. 30' N & 34' W of Centerline of 37th St. N. & Gouverneur Elev. = 185.54
- B.M. #2 " " Cut on N. End of Curb Return Across Rushwood from Lot 10, Block 2, Teal Cove 3rd Elev. = 181.765
- B.M. #3 " " on S. end of S. Curb return across Rushwood from Lot 4, Block 2, Teal Cove 3rd Elev. = 185.35
- B.M. #4 " " Cut on top of curb at the P.C. across Rushwood from Lot 2, Block 1, Teal Cove 3rd Elev. = 177.41

INDEX TO DRAWINGS

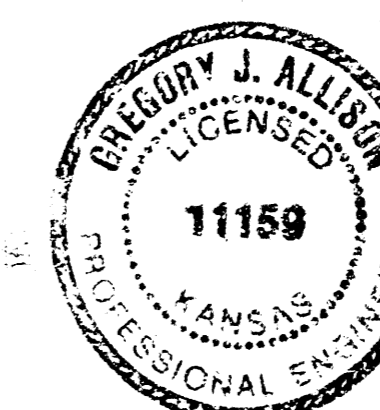
SHEET NO.	DESCRIPTION
1	TITLE SHEET
2-3	PAVING DETAILS
4	VALLEY GUTTER DETAILS
5	OAKMOUNT
6-7	CRANBERRY
8-13	CROSS-SECTIONS
14	TEAL COVE 3RD FINAL PLAT



Built Per Plan 3-91

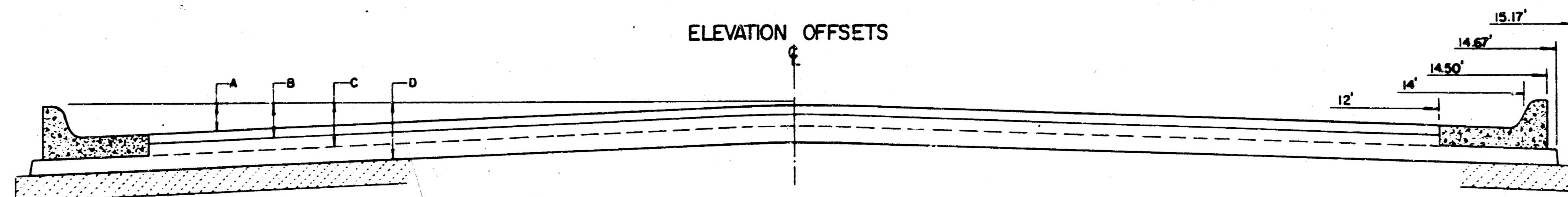
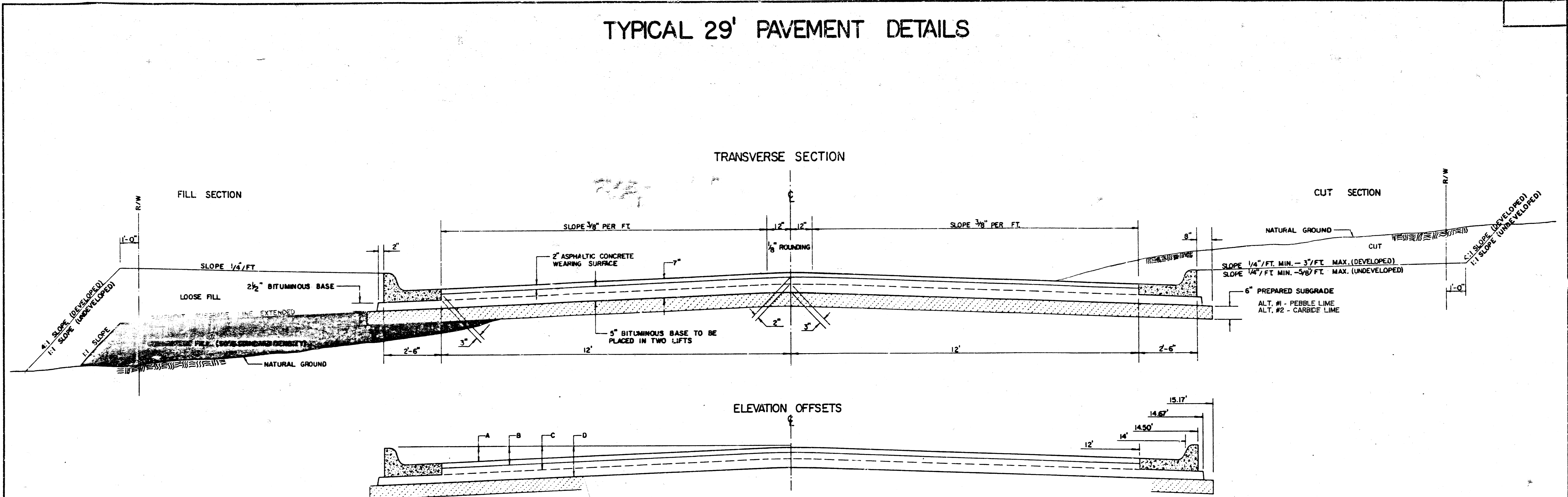


LOCATION MAP

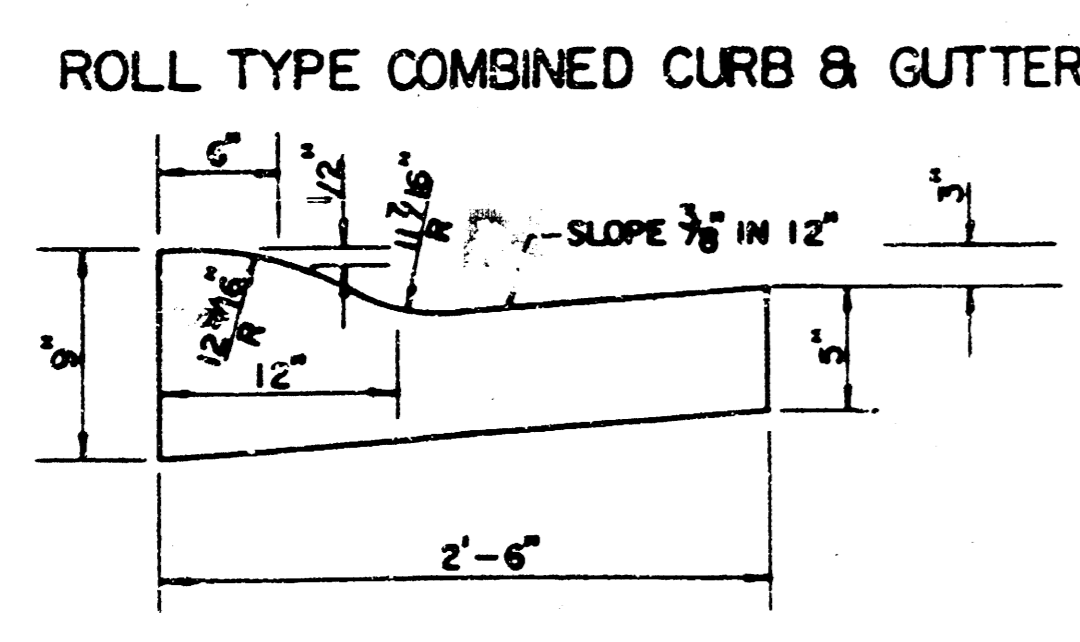
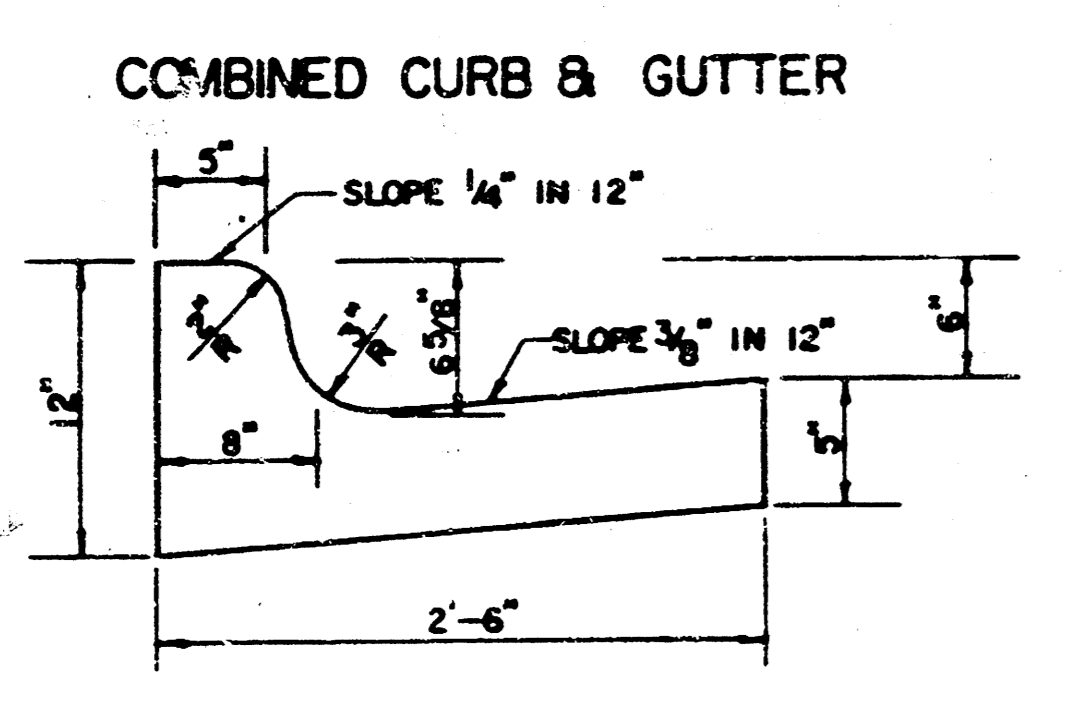


	TEAL COVE 3RD	Drawn by GJA Checked by DPR Done APRIL 1991 Job no
	PAVING PLANS	Sheet 1 of 14
MID-KANSAS ENGINEERING CONSULTANTS PA 3500 NORTH ROCK ROAD BUILDING #800 WICHITA, KANSAS 67226		636-5666

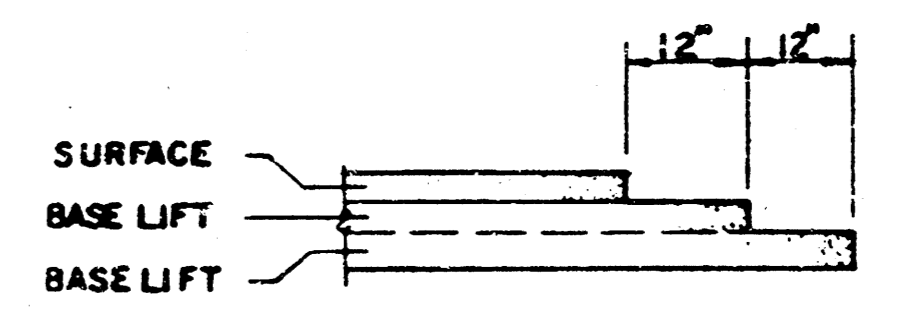
TYPICAL 29' PAVEMENT DETAILS



	DISTANCE FROM CENTERLINE (LT. & RT.)												
	0'	2'	4'	6'	7'	8'	10'	12'	14'	14.5'	14.67'	15.17'	
A: TOP OF CURBS TO TOP OF SURFACE LIFT	0.13	0.18	0.24	0.30	0.33	0.36	0.43	0.49	—	—	—	—	
B: TOP OF CURBS TO TOP OF UPPER BASE LIFT	0.30	0.35	0.41	0.47	0.50	0.53	0.60	0.66	—	—	—	—	
C: TOP OF CURBS TO TOP OF LOWER BASE LIFT	0.47	0.52	0.60	0.68	0.71	0.75	0.83	0.90	0.99	1.00	1.01	—	
D: TOP OF CURBS TO TOP OF SUBGRADE	0.72	0.77	0.84	0.91	0.94	0.98	1.05	1.12	1.21	1.21	1.21	1.23	



TRANSVERSE CONSTRUCTION JOINTS



TRANSVERSE CONSTRUCTION JOINTS SHALL BE CONSTRUCTED IN FLEXIBLE BASE PAVEMENTS AT LOCATIONS WHERE PAYMENT JOINTS EXISTING FLEXIBLE BASE PAVEMENT AS SHOWN BY THE DETAIL. ALL COSTS ASSOCIATED WITH THE CONSTRUCTION OF THE TRANSVERSE JOINT SHALL BE INCLUDED IN THE BID PRICE FOR SQUARE YARDS 7" ASPHALTIC CONCRETE (5" BITUMINOUS BASE).

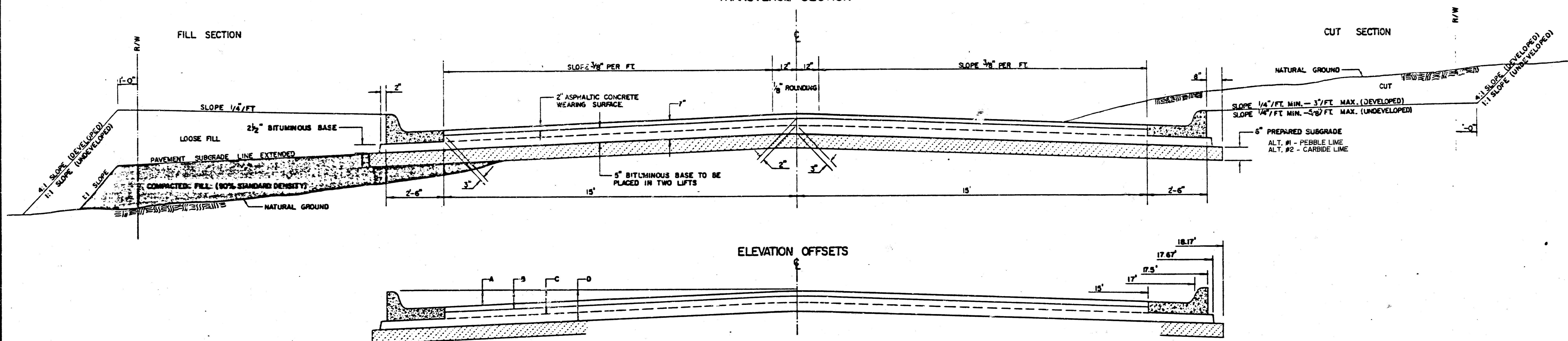
GENERAL NOTES

- 1) THE ASPHALTIC CONCRETE PAVEMENT BETWEEN THE COMBINED CURB AND GUTTER SHALL BE PAID AS SQUARE YARDS OF 7" ASPHALTIC CONCRETE (5" BITUMINOUS BASE).
- 2) THE BITUMINOUS BASE UNDER AND BEHIND THE COMBINED CURB AND GUTTER SHALL BE PAID AS SQUARE YARDS OF 2 1/2" BITUMINOUS BASE.
- 3) A TACK COAT OF EMULSIFIED ASPHALT (SC-1H OR CSS-1H) SHALL BE APPLIED AT AN APPROPRIATE RATE OF 0.05 GALLONS PER SQUARE YARD BETWEEN EACH LIFT OF ASPHALTIC MATERIAL.
- 4) BITUMINOUS BASE AND ASPHALTIC CONCRETE WEARING SURFACE SHALL BE PLACED WITH A LAYDOWN MACHINE HAVING AUTOMATIC CONTROLS FOR LINE AND GRADE.
- 5) CONSTRUCTION JOINTS IN EACH LIFT SHALL BE STAGGERED A MINIMUM DISTANCE OF ONE (1) FOOT FROM JOINTS IN PRECEDING LIFTS AND PLACED SO THAT A JOINT WILL BE CONSTRUCTED ON THE CENTERLINE OF THE TOP LIFT.
- 6) CONTRACTOR TO BID ONLY ONE SUBGRADE TREATMENT ALTERNATE WHEN ALTERNATES ARE PROVIDED IN THE PROPOSAL AND CONTRACT. THE ALTERNATE CHOSEN BY THE SUCCESSFUL BIDDER SHALL BE USED IN CONSTRUCTING THIS PROJECT.

7 INCH RESIDENTIAL ASPHALTIC CONCRETE PAVEMENT WITH 5 INCH BITUMINOUS BASE
CITY OF WICHITA, KANSAS
 TEAL COVE 3RD PROJECT NUMBER
 PROJECT NO. 472-B1941 **2** / **14**

TYPICAL 35' PAVEMENT DETAILS

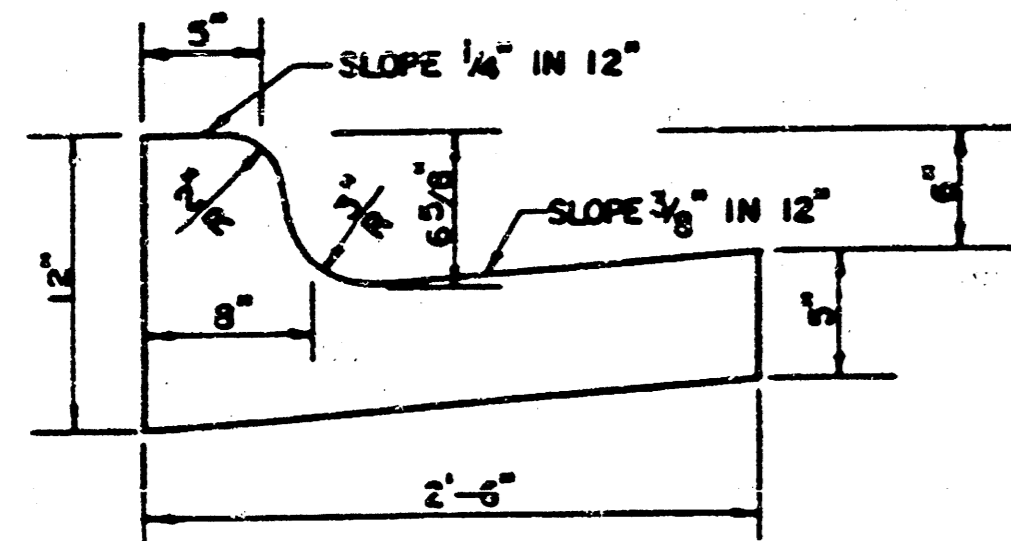
TRANSVERSE SECTION



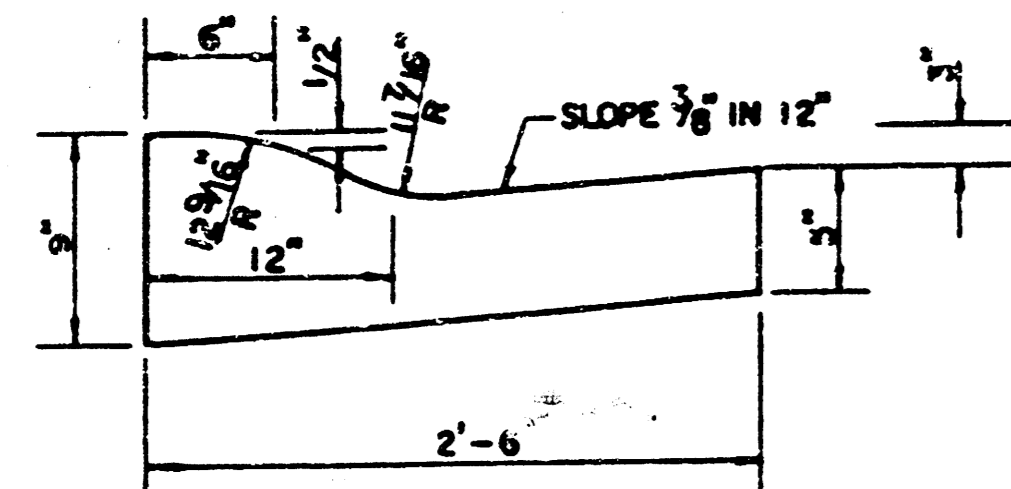
ELEVATION OFFSETS

	DISTANCE FROM CENTERLINE (LT. & RT.)												
	0'	2'	4'	6'	8.5'	10'	12'	14'	15'	17'	17.5'	17.67'	18.17'
A: TOP OF CURBS TO TOP OF SURFACE LIFT	0.04	0.08	0.14	0.21	0.29	0.33	0.39	0.46	0.49	—	—	—	—
B: TOP OF CURBS TO TOP OF UPPER BASE LIFT	0.21	0.25	0.31	0.37	0.45	0.50	0.56	0.62	0.65	—	—	—	—
C: TOP OF CURBS TO TOP OF LOWER BASE LIFT	0.37	0.43	0.50	0.57	0.67	0.72	0.79	0.87	0.90	0.98	1.00	1.00	—
D: TOP OF CURBS TO TOP OF SUBGRADE	0.62	0.67	0.74	0.81	0.90	0.95	1.02	1.08	1.12	1.19	1.21	1.21	1.23

COMBINED CURB & GUTTER



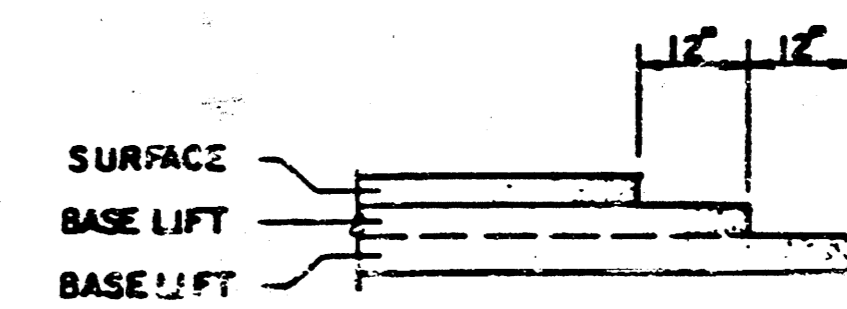
ROLL TYPE COMBINED CURB & GUTTER



GENERAL NOTES

- 1) THE ASPHALTIC CONCRETE PAVEMENT BETWEEN THE COMBINED CURB AND GUTTER SHALL BE PAID AS SQUARE YARDS OF 7" ASPHALTIC CONCRETE (5" BITUMINOUS BASE).
- 2) THE BITUMINOUS BASE UNDER AND BEHIND THE COMBINED CURB AND GUTTER SHALL BE PAID AS SQUARE YARDS OF 2 1/2" BITUMINOUS BASE.
- 3) A TACK COAT OF EMULSIFIED ASPHALT (SC-1H OR CSS-1H) SHALL BE APPLIED AT AN APPROXIMATE RATE OF 0.03 GALLONS PER SQUARE YARD BETWEEN EACH LIFT OF ASPHALTIC MATERIAL.
- 4) BITUMINOUS BASE AND ASPHALTIC CONCRETE WEARING SURFACE SHALL BE PLACED WITH A LAYDOWN MACHINE HAVING AUTOMATIC CONTROLS FOR LINE AND GRADE.
- 5) CONSTRUCTION JOINTS IN EACH LIFT SHALL BE STAGGERED A MINIMUM DISTANCE OF ONE (1) FOOT FROM JOINTS IN PRECEDING LIFTS AND PLACED SO THAT A JOINT WILL BE CONSTRUCTED ON THE CENTERLINE OF THE TOP LIFT.
- 6) CONTRACTOR TO BID ONLY ONE SUBGRADE TREATMENT ALTERNATE WHEN ALTERNATES ARE PROVIDED IN THE PROPOSAL AND CONTRACT. THE ALTERNATE CHOSEN BY THE SUCCESSFUL BIDDER SHALL BE USED IN CONSTRUCTING THIS PROJECT.

TRANSVERSE CONSTRUCTION JOINTS



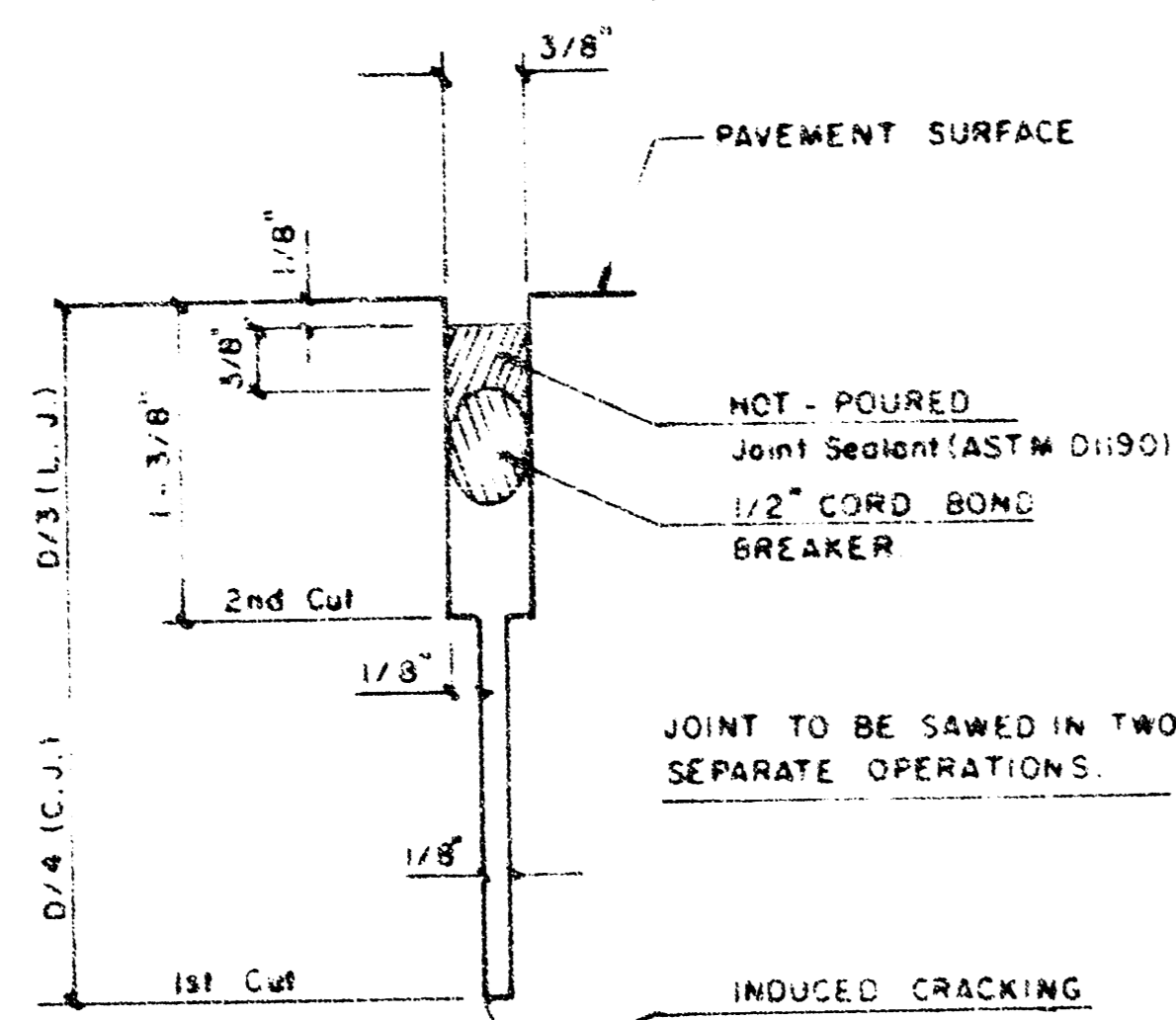
TRANSVERSE CONSTRUCTION JOINTS SHALL BE CONSTRUCTED IN FLEXIBLE BASE PAVEMENTS AT LOCATIONS WHERE PAVEMENT JOINTS EXISTING FLEXIBLE BASE PAVEMENT AS SHOWN BY THE DETAIL. ALL COSTS ASSOCIATED WITH THE CONSTRUCTION OF THE TRANSVERSE JOINT SHALL BE INCLUDED IN THE BID PRICE FOR SQUARE YARDS 8" ASPHALTIC CONCRETE (6" BITUMINOUS BASE).

7 INCH RESIDENTIAL ASPHALTIC CONCRETE
PAVEMENT WITH 5 INCH BITUMINOUS BASE
CITY OF WICHITA, KANSAS

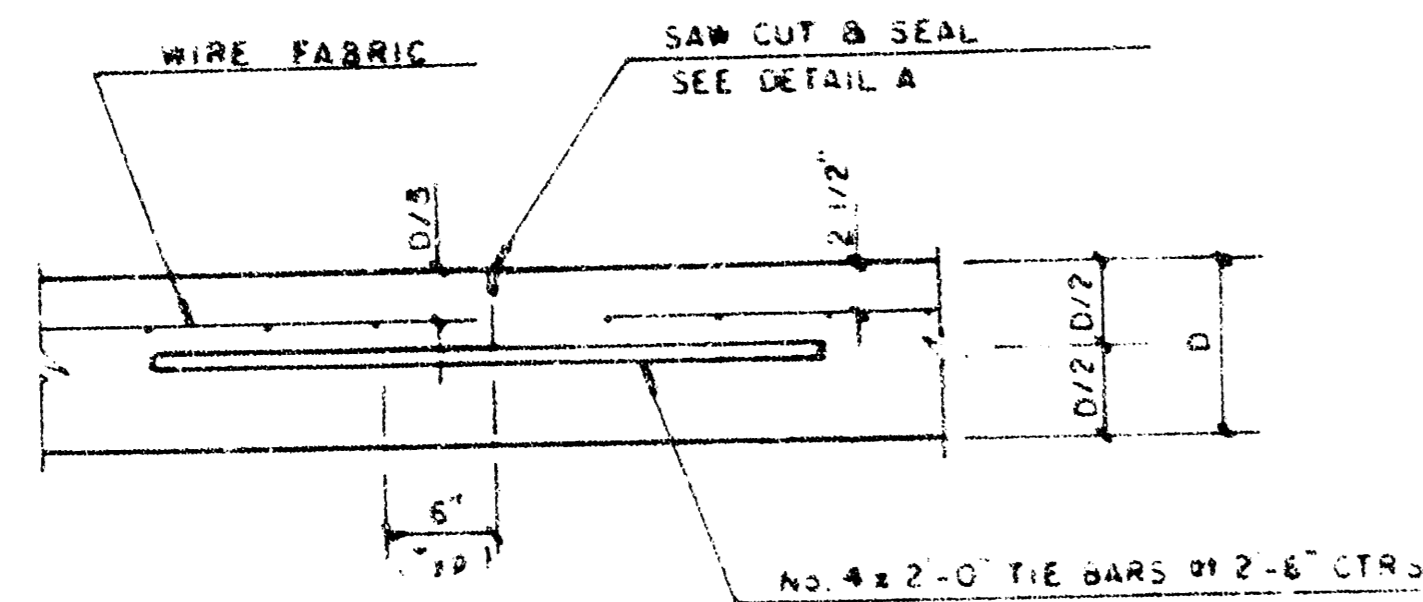
TEAL COVE SRD.
PROJECT NO. 472-3194I

PROJECT NUMBER

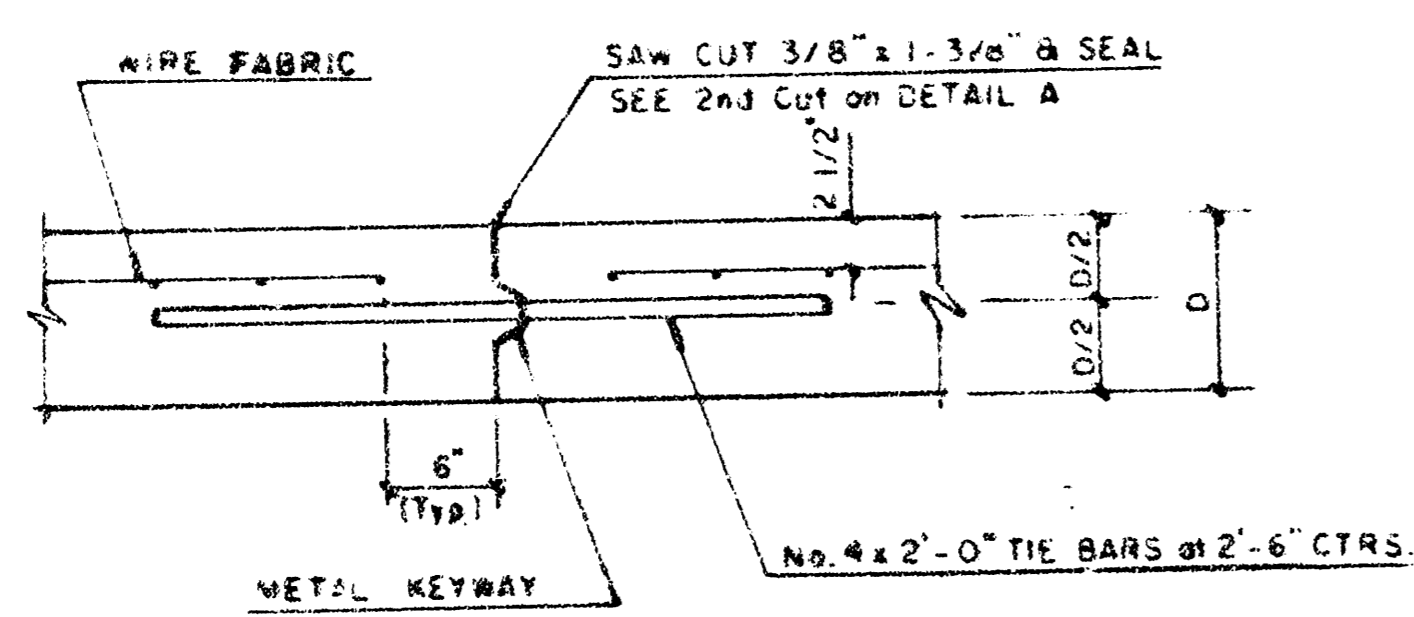
3/14



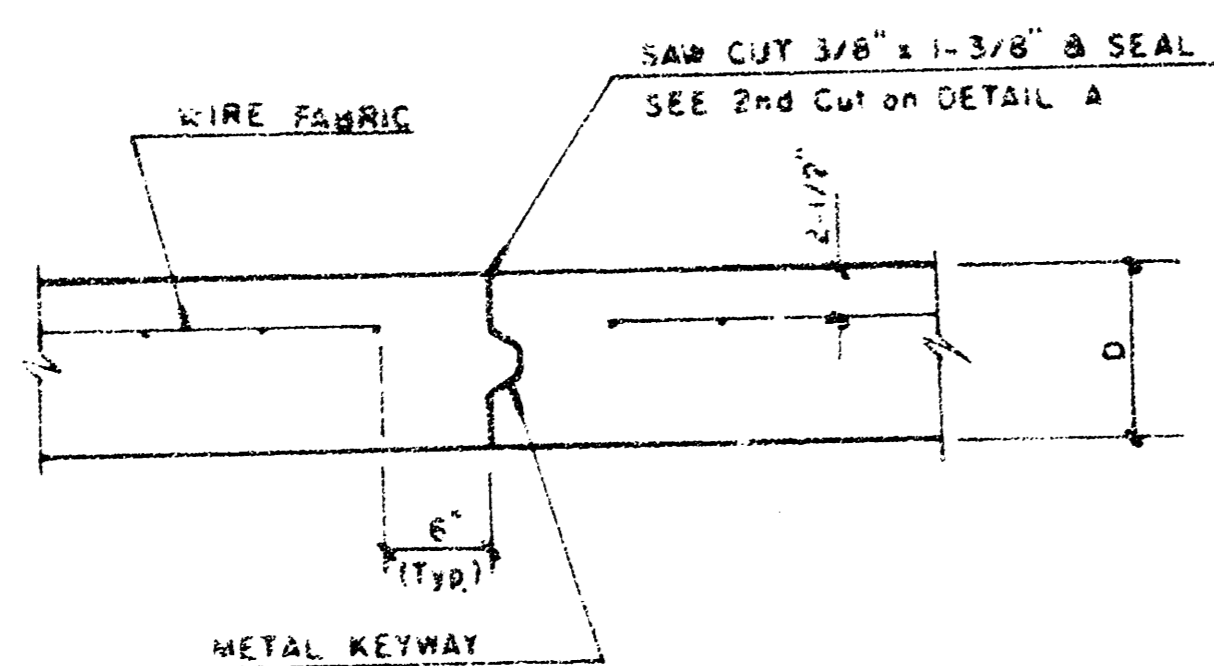
DETAIL A



LONGITUDINAL JOINT DETAIL (L.J.)

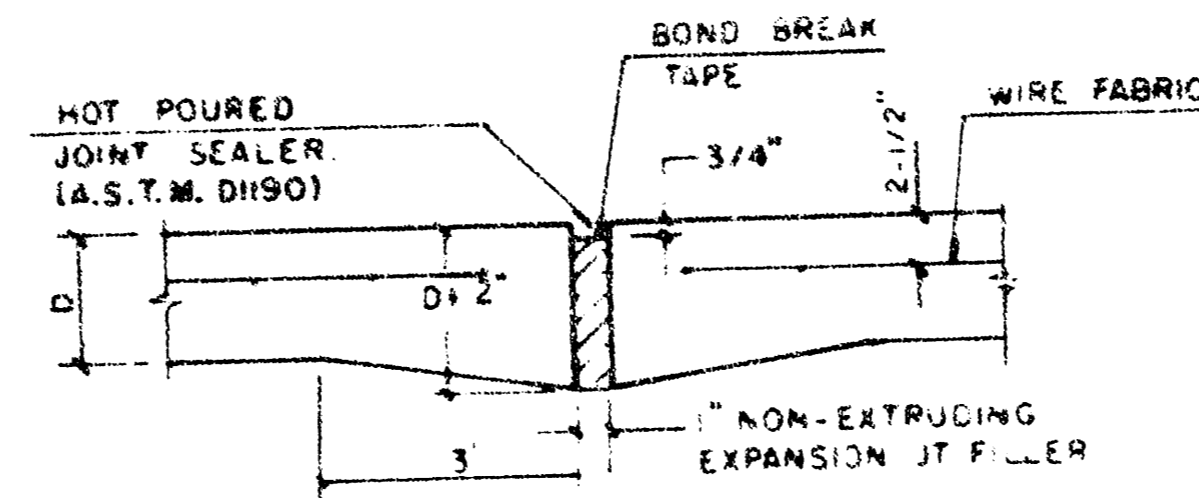


OPTIONAL LONGITUDINAL CONSTRUCTION JOINT (L.J.) (Alternate L.J.)



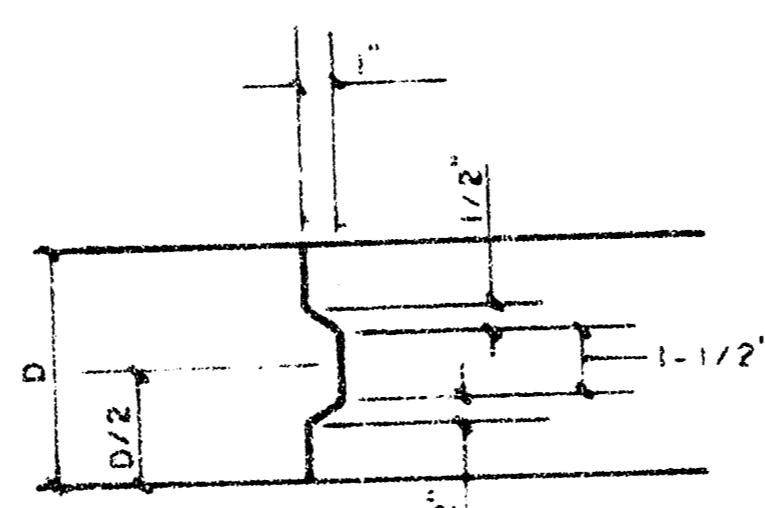
OPTIONAL CONTRACTION CONSTRUCTION JOINT (C.J.) (Alternate C.J.)

NOTE: ALL CONCRETE VALLEY GUTTER REINFORCEMENT SHALL BE ADEQUATELY SUPPORTED BY BAR CHAIRS IN THE REQUIRED POSITION UNLESS APPROVED OTHERWISE BY THE ENGINEER.

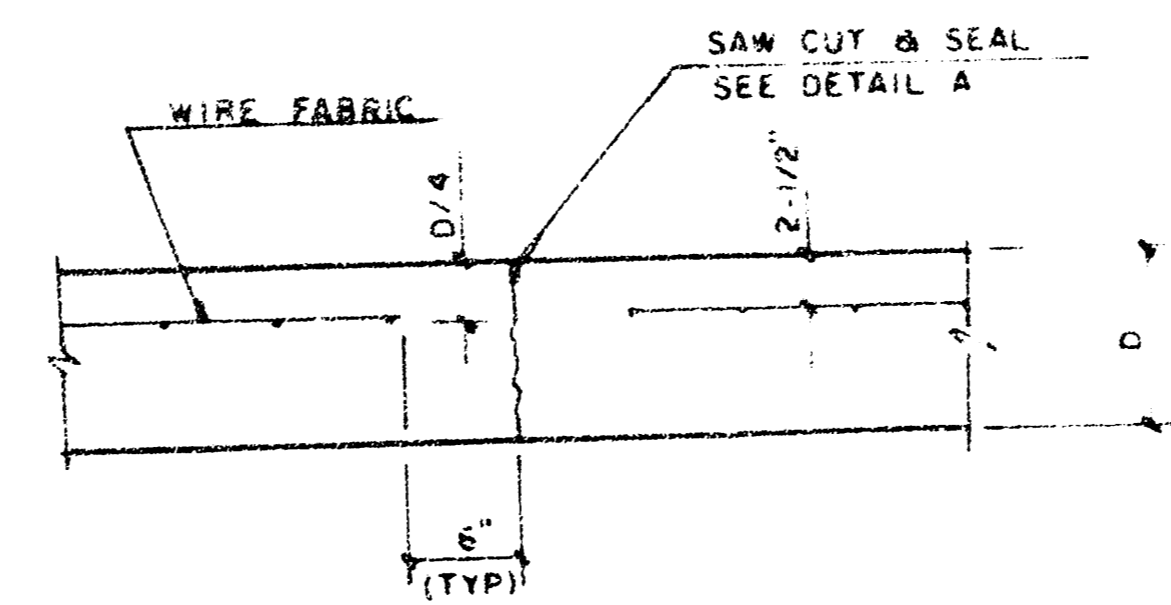


EXPANSION JOINT

NOTE: EXTRA THICKNESS TO BE SUBSIDIARY TO PRICE OF SQ YDS PAVEMENT.



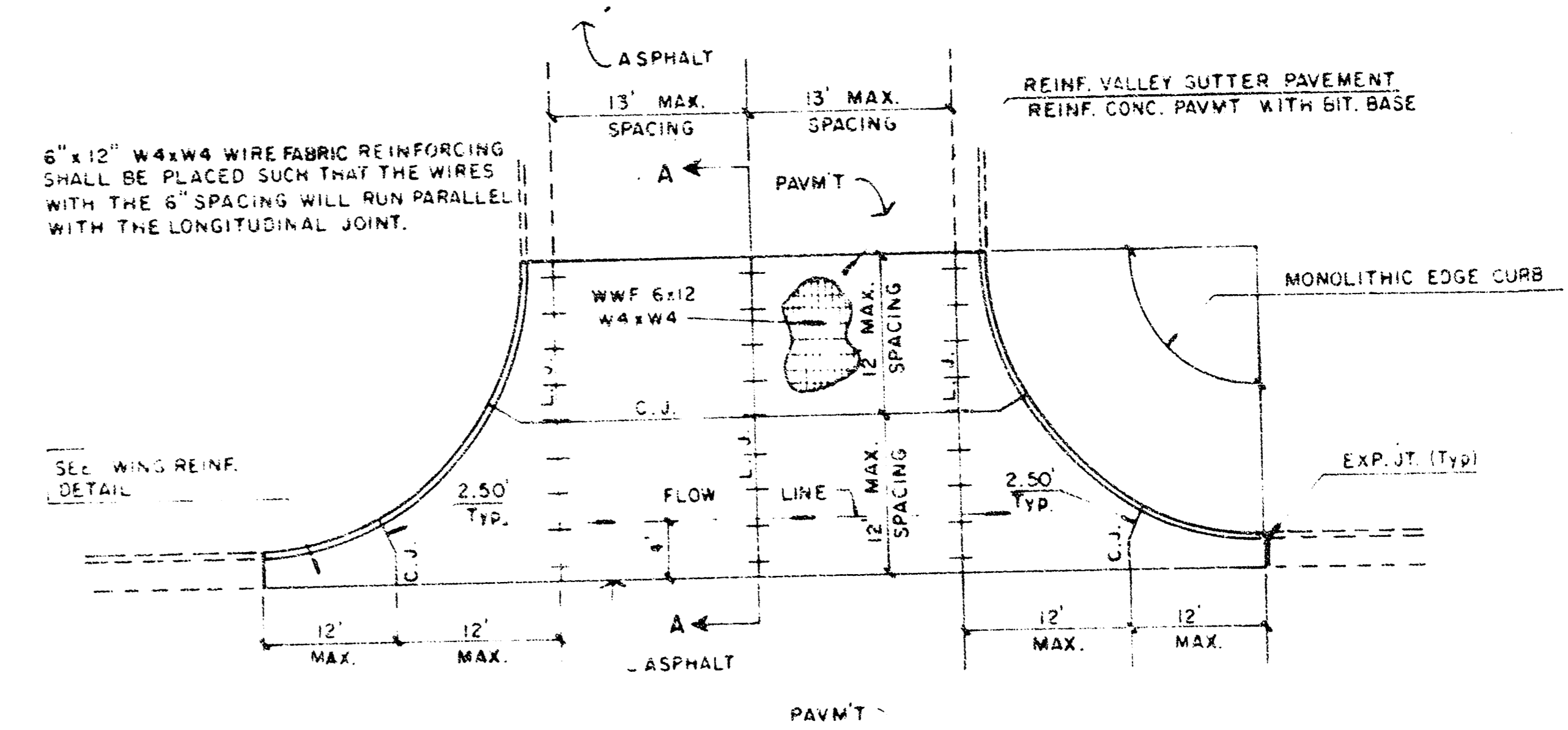
KEYWAY DETAIL



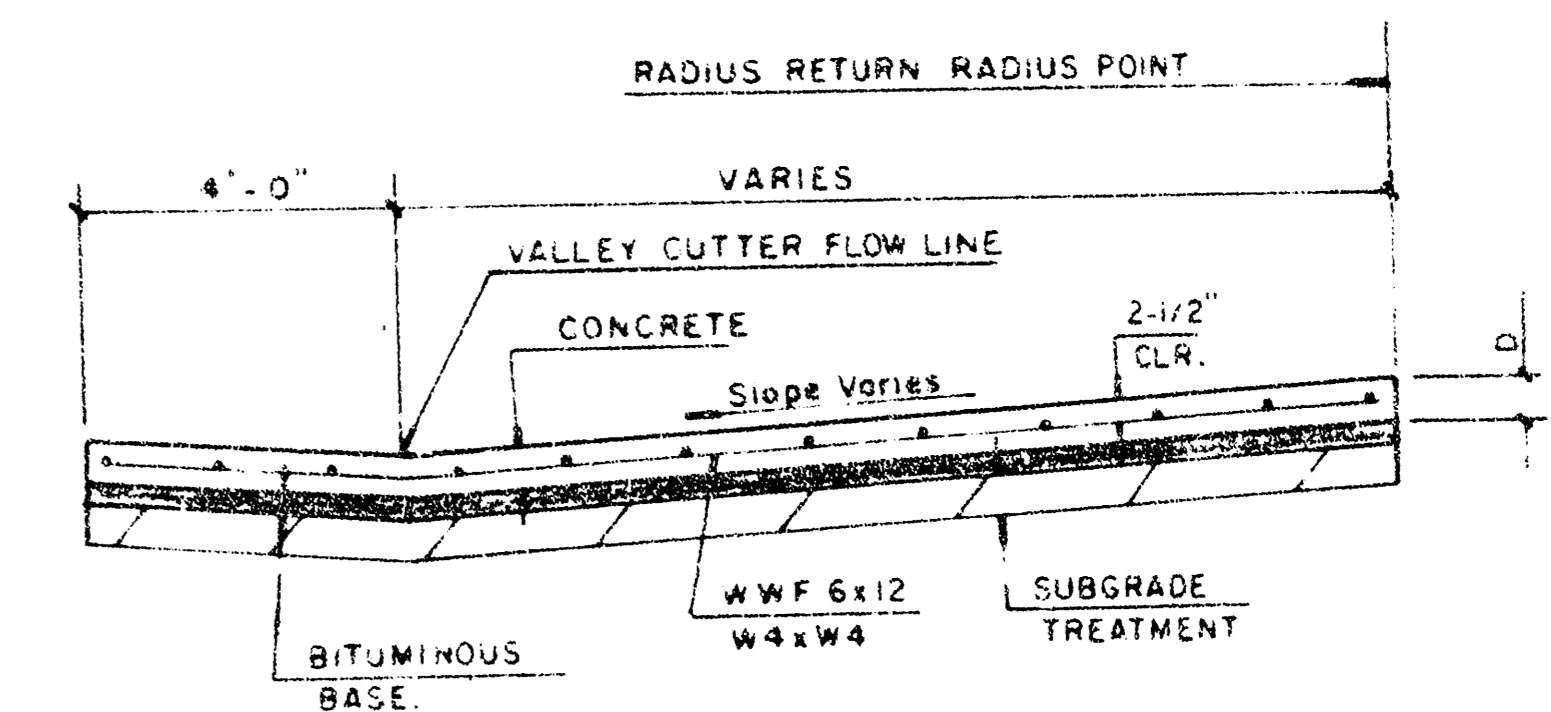
CONTRACTION JOINT DETAIL (C.J.)

LEGEND

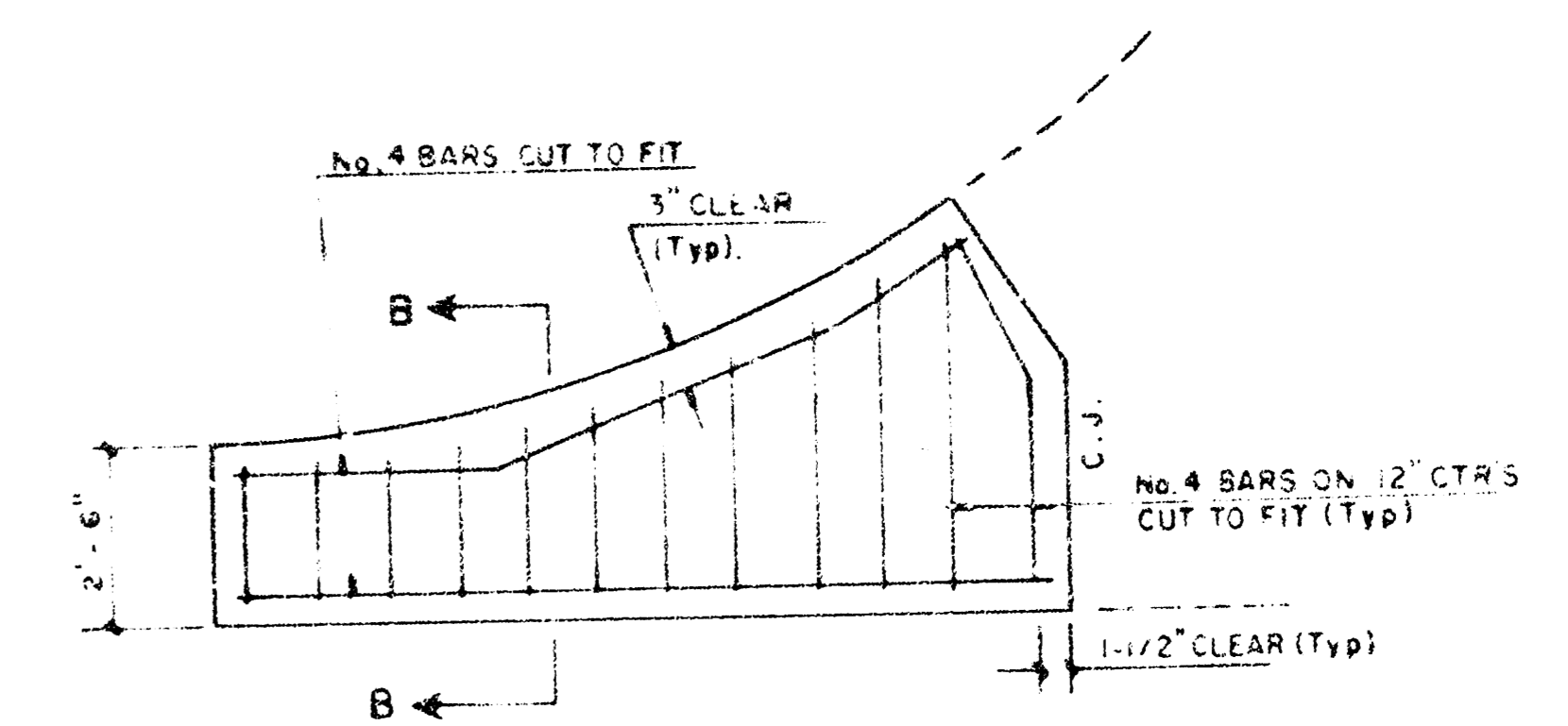
C.J. IDENTIFIES CONTRACTION JOINT
L.J. IDENTIFIES LONGITUDINAL JOINT



PLAN REINFORCED VALLEY GUTTER

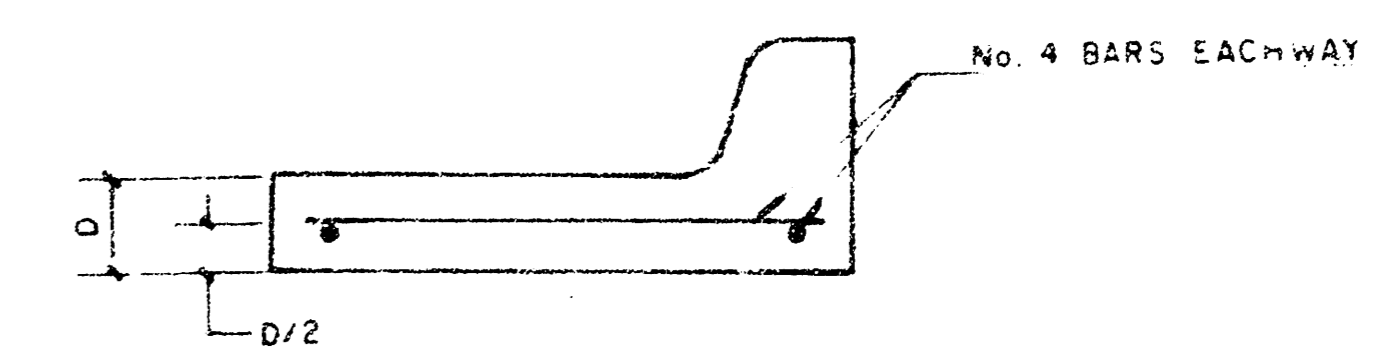


SECTION A-A



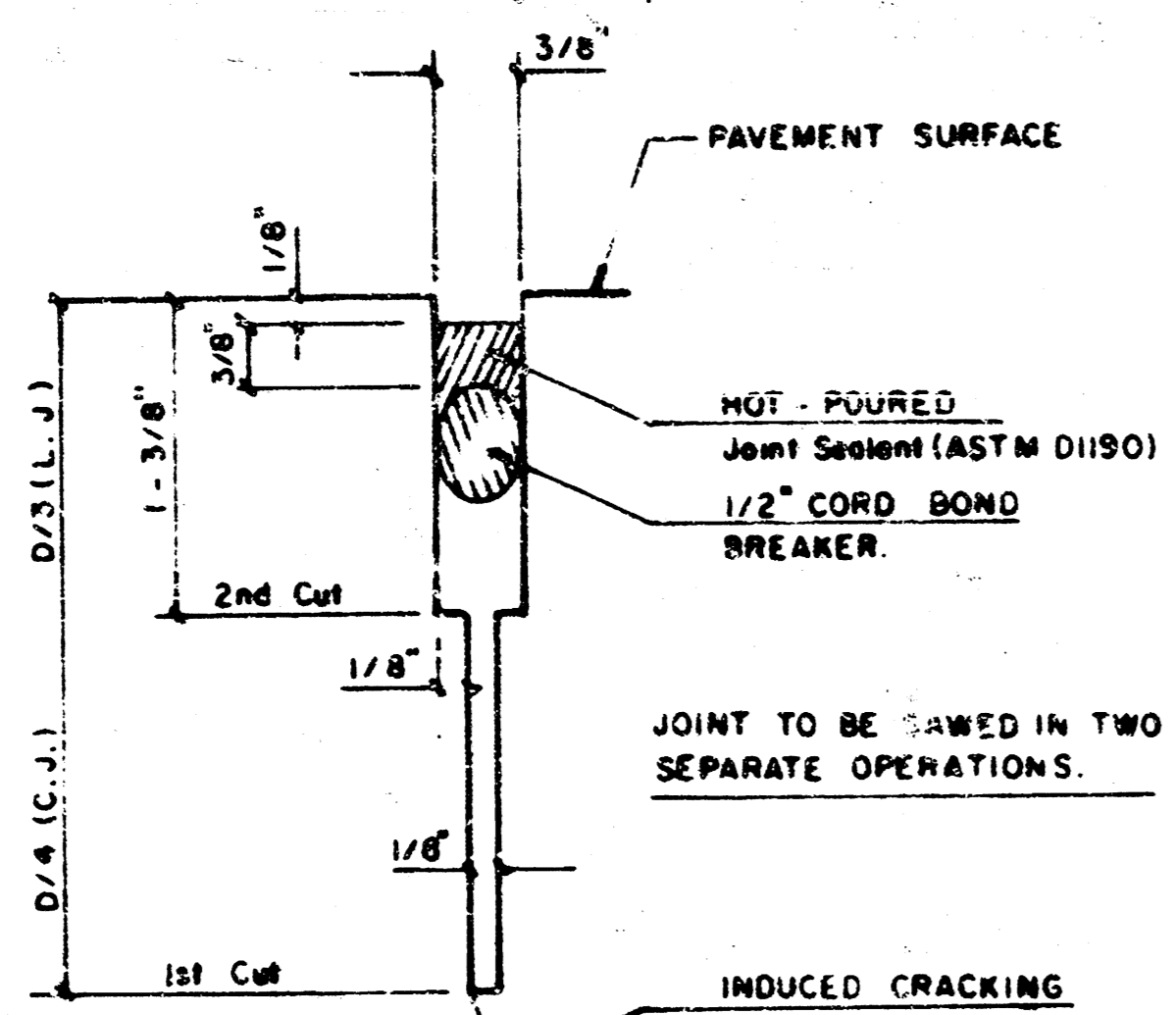
WING REINFORCING DETAIL

NOTE: OMIT WIRE FABRIC REINFORCING IN THIS SECTION.

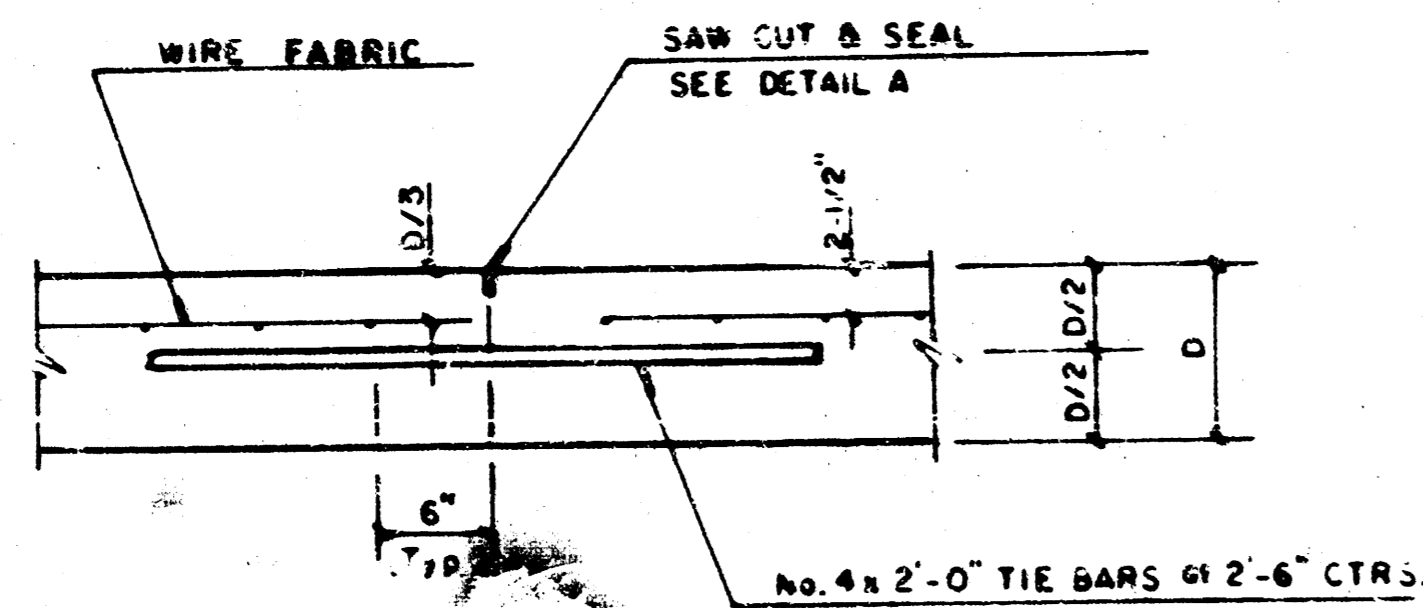


SECTION B-B

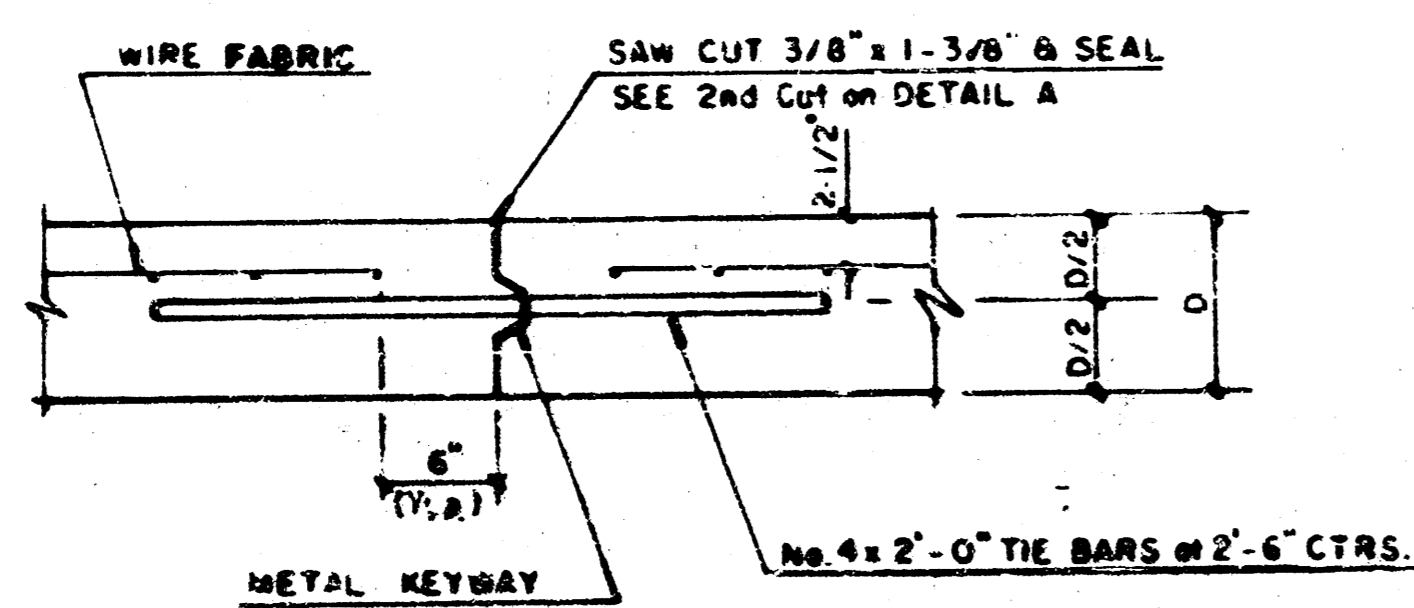
PROJECT DESCRIPTION
VALLEY GUTTER DETAILS
PROJECT NUMBER
TEAL COVE 3RD PROJECT NO. 472-01941



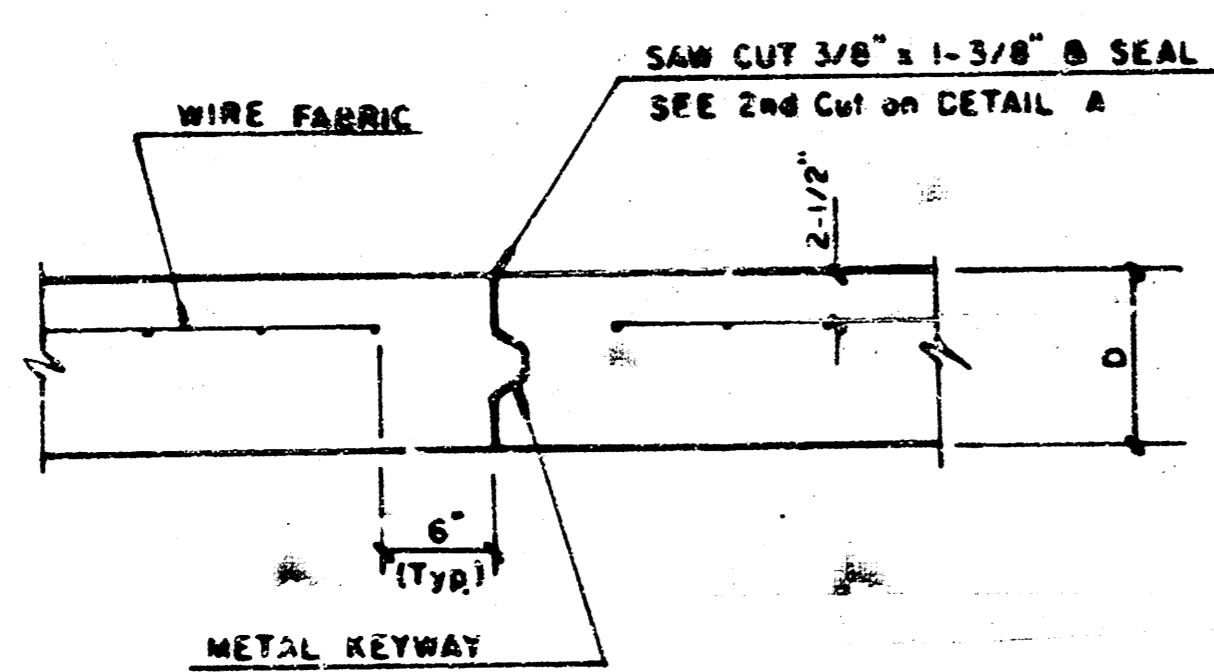
DETAIL A



LONGITUDINAL JOINT DETAIL (L.J.)

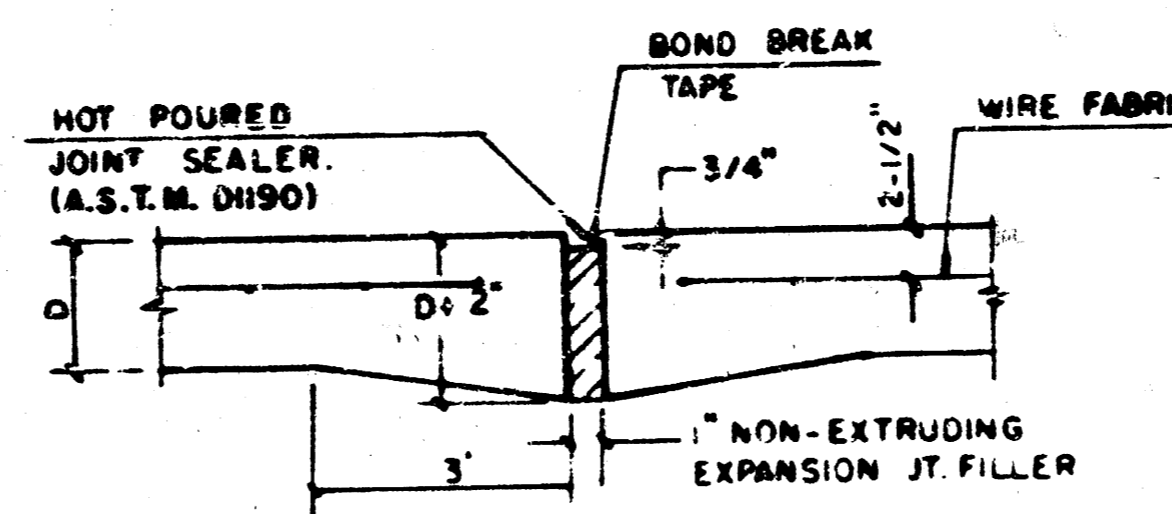


**OPTIONAL LONGITUDINAL CONSTRUCTION JOINT (L.J.)
(Alternate L.J.)**



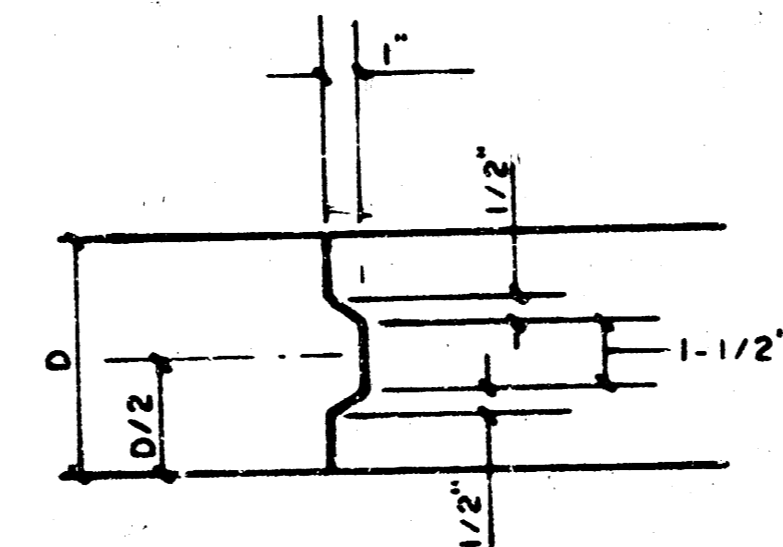
**OPTIONAL CONTRACTION CONSTRUCTION JOINT (C.J.)
(Alternate C.J.)**

NOTE: ALL CONCRETE VALLEY GUTTER REINFORCEMENT SHALL BE ADEQUATELY SUPPORTED BY BAR CHAIRS IN THE REQUIRED POSITION UNLESS APPROVED OTHERWISE BY THE ENGINEER.

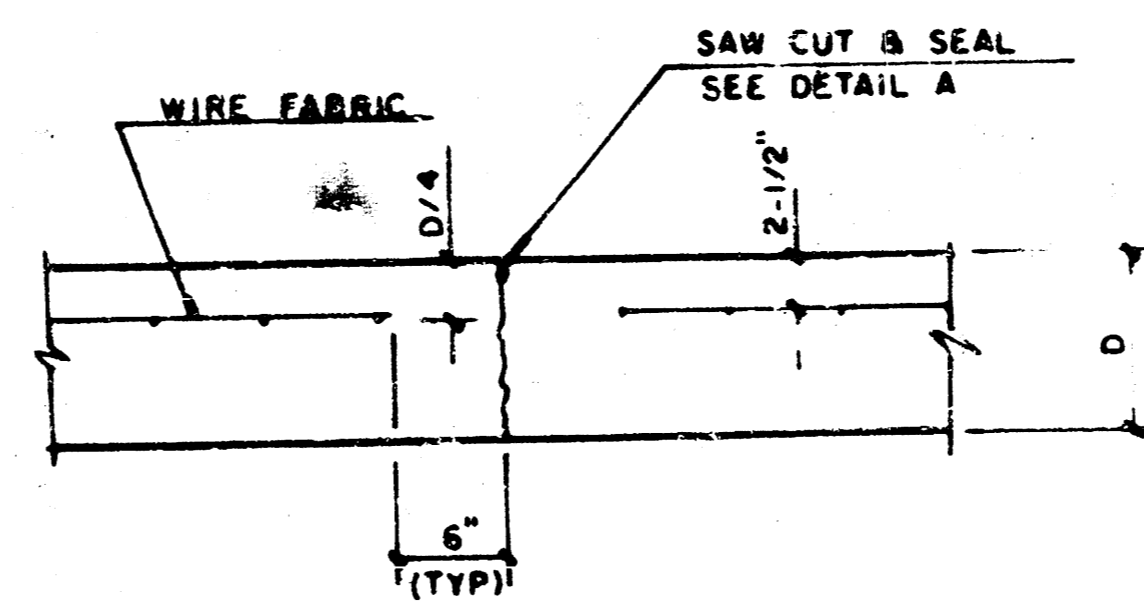


EXPANSION JOINT

NOTE: EXTRA THICKNESS TO BE SUBSIDIARY TO PRICE OF SQ YDS PAVEMENT.

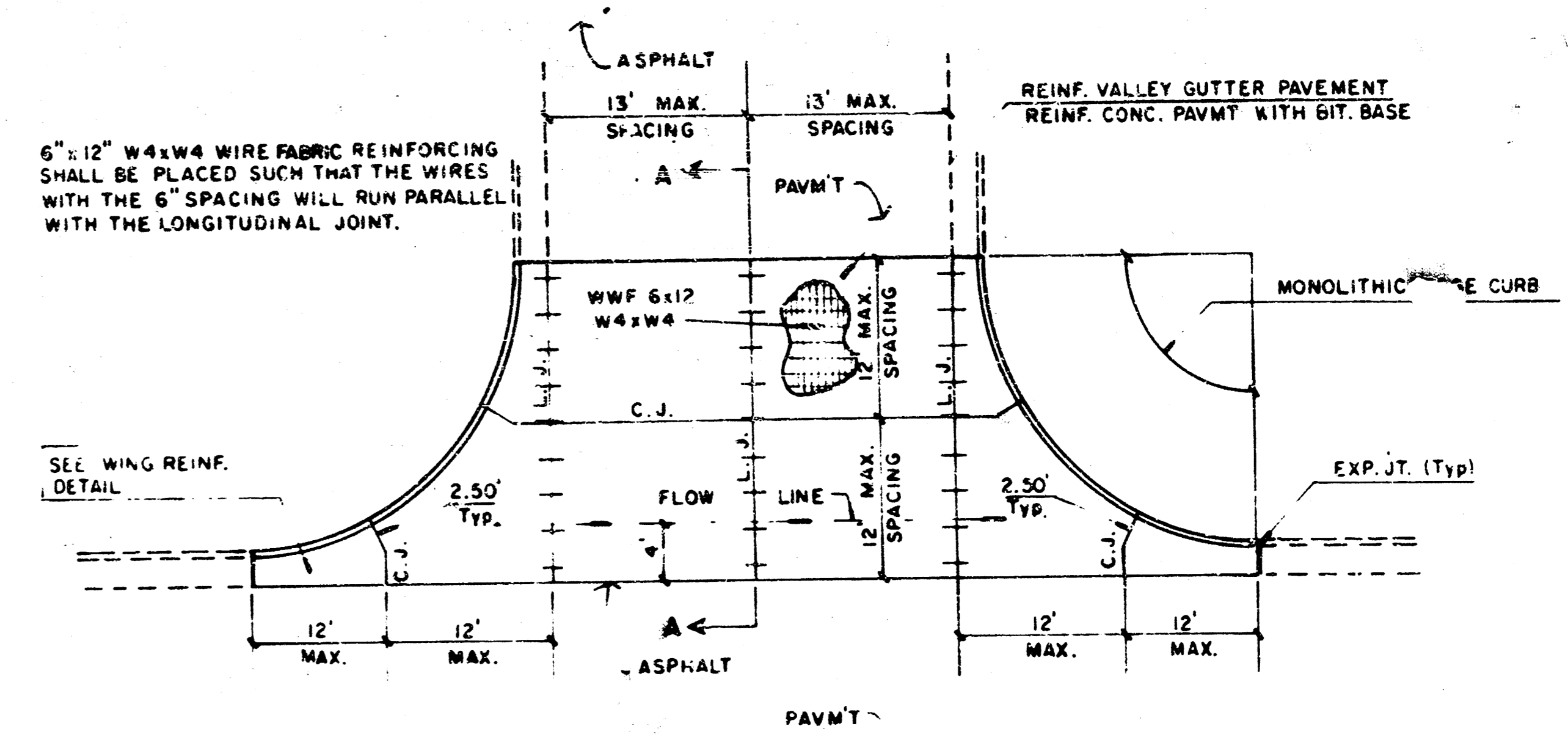


KEYWAY DETAIL

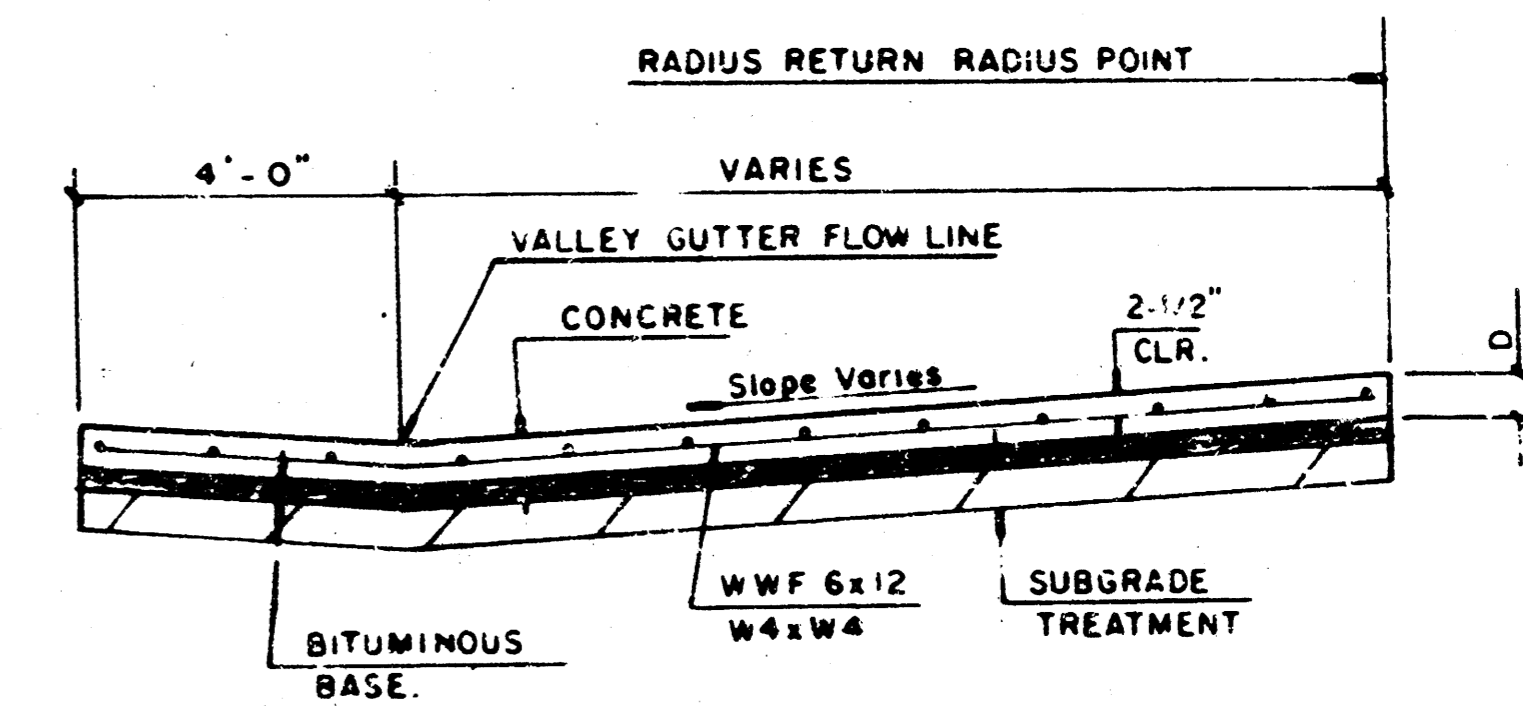


CONTRACTION JOINT DETAIL (C.J.)

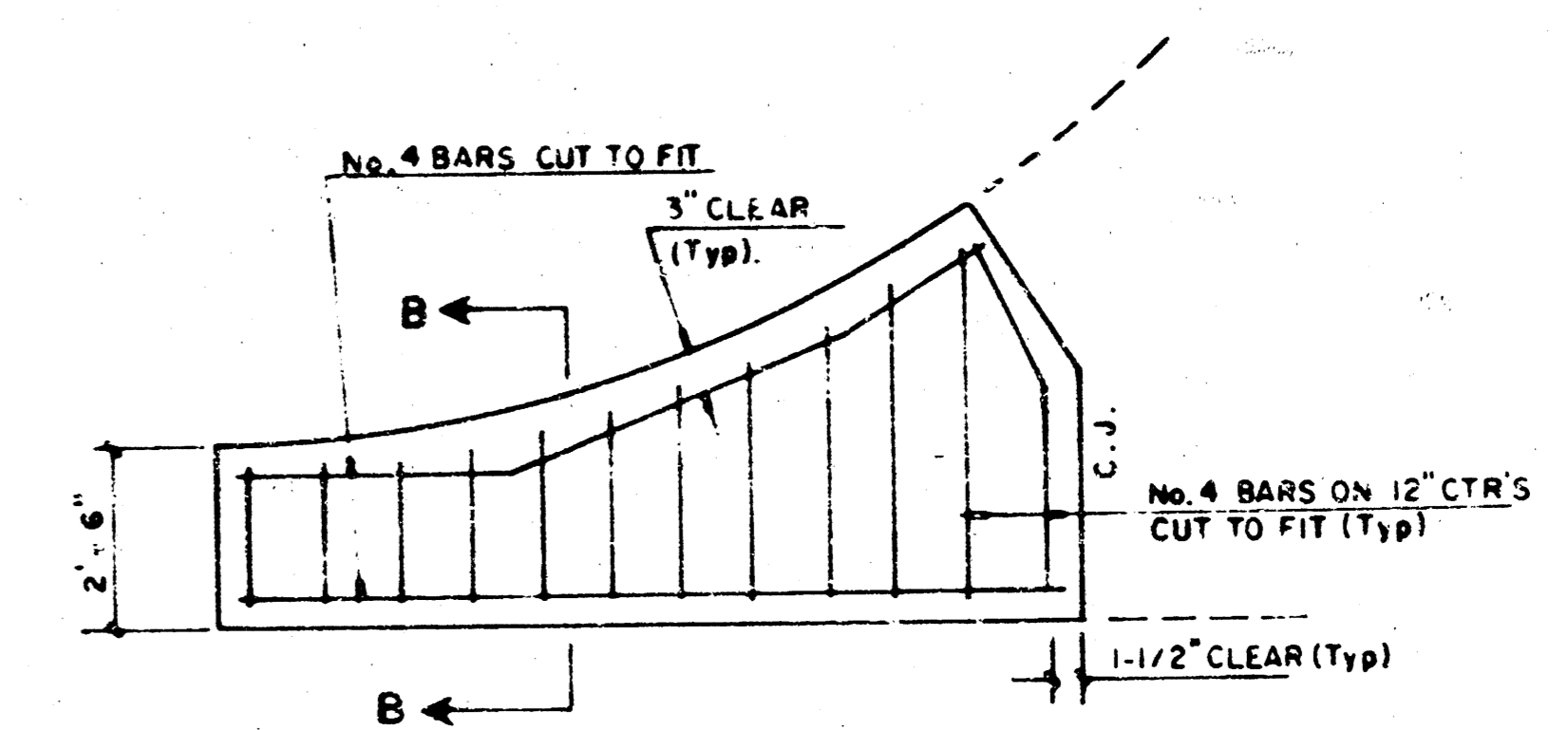
LEGEND
C.J. IDENTIFIES CONTRACTION JOINT
L.J. IDENTIFIES LONGITUDINAL JOINT



**PLAN
REINFORCED VALLEY GUTTER**

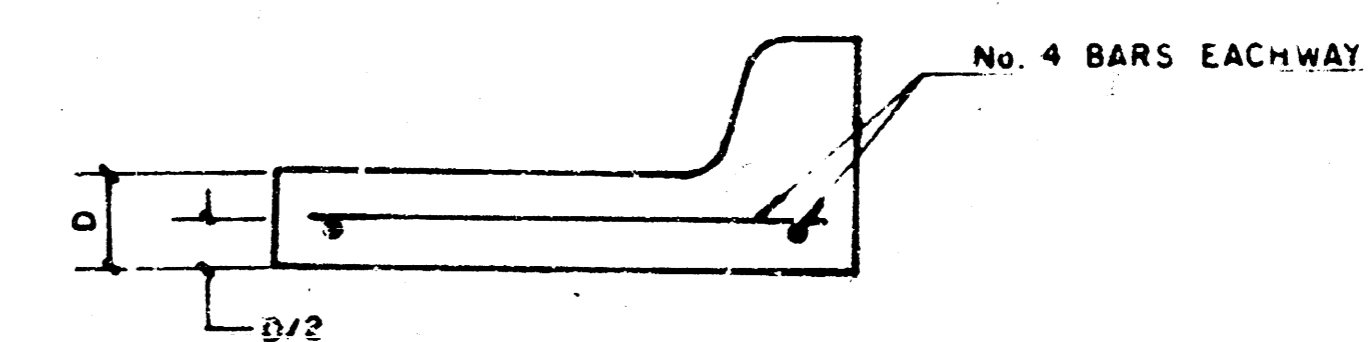


SECTION A-A



WING REINFORCING DETAIL

NOTE: OMIT WIRE FABRIC REINFORCING IN THIS SECTION.



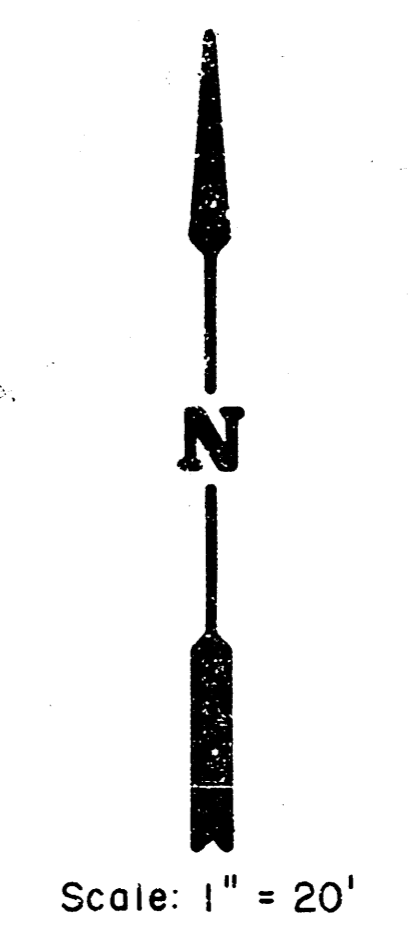
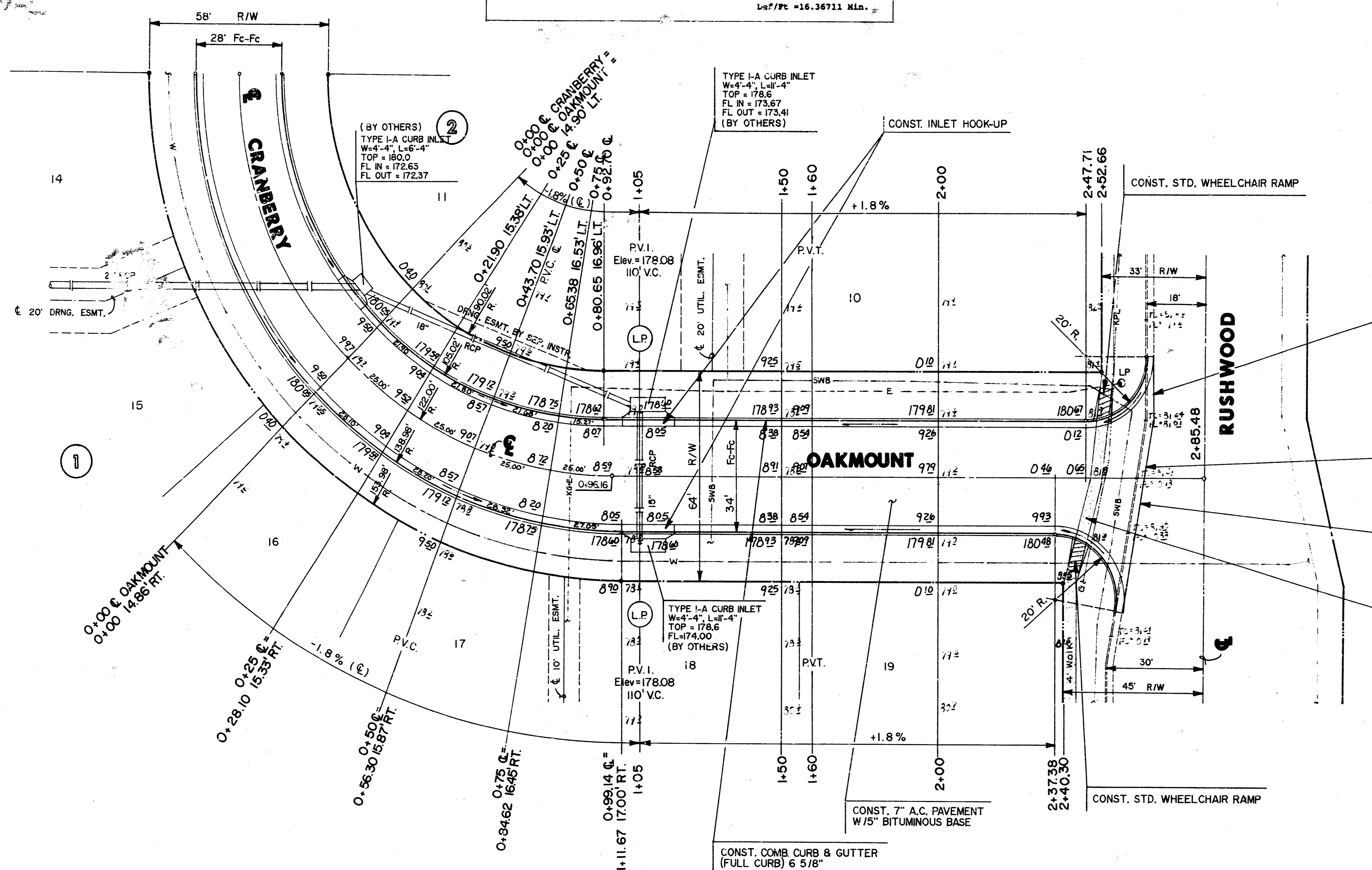
SECTION B-B

PROJECT DESCRIPTION
**VALLEY GUTTER
DETAILS**
PROJECT NUMBER
TEAL COVE 3RD
PROJECT NO. 472-8194

$\Delta = 44^{\circ}00'10''$ $R = 105.02'$ $T = 42.43'$ $L = 80.65'$ $LC = 78.69'$
 CURVE DATA BASED ON LEFT FACE OF CURB $\Delta/2 = 22^{\circ}00'05''$

CHORD LENGTH					
STATION	ARC	S'off LtCb	S'off RtCb	DEFLECTION	TOTAL DEFLECTION
0+00.00	-	-	-	00°00'00"	00°00'00"
0+21.30	21.50'	20.20'	-	05°58'26"	05°58'26"
0+43.70	21.80'	20.10'	-	05°56'48"	11°55'15"
0+65.38	21.68'	19.99'	-	05°54'50"	17°50'05"
0+86.65	19.27'	14.10'	-	04°10'00"	22°00'05"

Let/Fc = 16.36711 Min.



$\Delta = 46^{\circ}02'06''$ $R = 138.98'$ $T = 59.04'$ $L = 111.67'$ $LC = 108.69'$
 CURVE DATA BASED ON RIGHT FACE OF CURB $\Delta/2 = 23^{\circ}01'03''$

CHORD LENGTH					
STATION	ARC	S'off LtCb	S'off RtCb	DEFLECTION	TOTAL DEFLECTION
0+00.00	-	-	-	00°00'00"	00°00'00"
0+28.10	28.10'	-	29.67'	05°47'32"	05°47'32"
0+56.30	28.20'	-	29.77'	05°48'46"	11°36'18"
0+84.62	28.32'	-	29.90'	05°50'15"	17°26'34"
1+11.67	27.05'	-	28.56'	05°34'29"	23°01'03"

Def/Fc = 12.36778 Min.

- WHERE NECESSARY, SAW CUT EXISTING PAVEMENT AND REMOVE & REPLACE 2" BIT. SURFACE COURSE. THIS WORK IS SUBSIDIARY TO OTHER BID ITEMS.
- REMOVE 60' L.F. OF CURB & GUTTER TO THE NEAREST JOINT
- MATCH EXIST. PAVEMENT
- REMOVE 60' L.F. OF 4' SIDEWALK TO THE NEAREST JOINT.



CITY OF WICHITA
OAKMOUNT
 PROJ. NO. 472 - 81941

Design
GUA
 Drawn by
DPR
 Checked by
DCH
 Date
APRIL 1991
 200 no

MID-KANSAS ENGINEERING CONSULTANTS PA
 3500 NORTH ROCK ROAD
 BUILDING #800
 WICHITA, KANSAS 67226
 636-5566

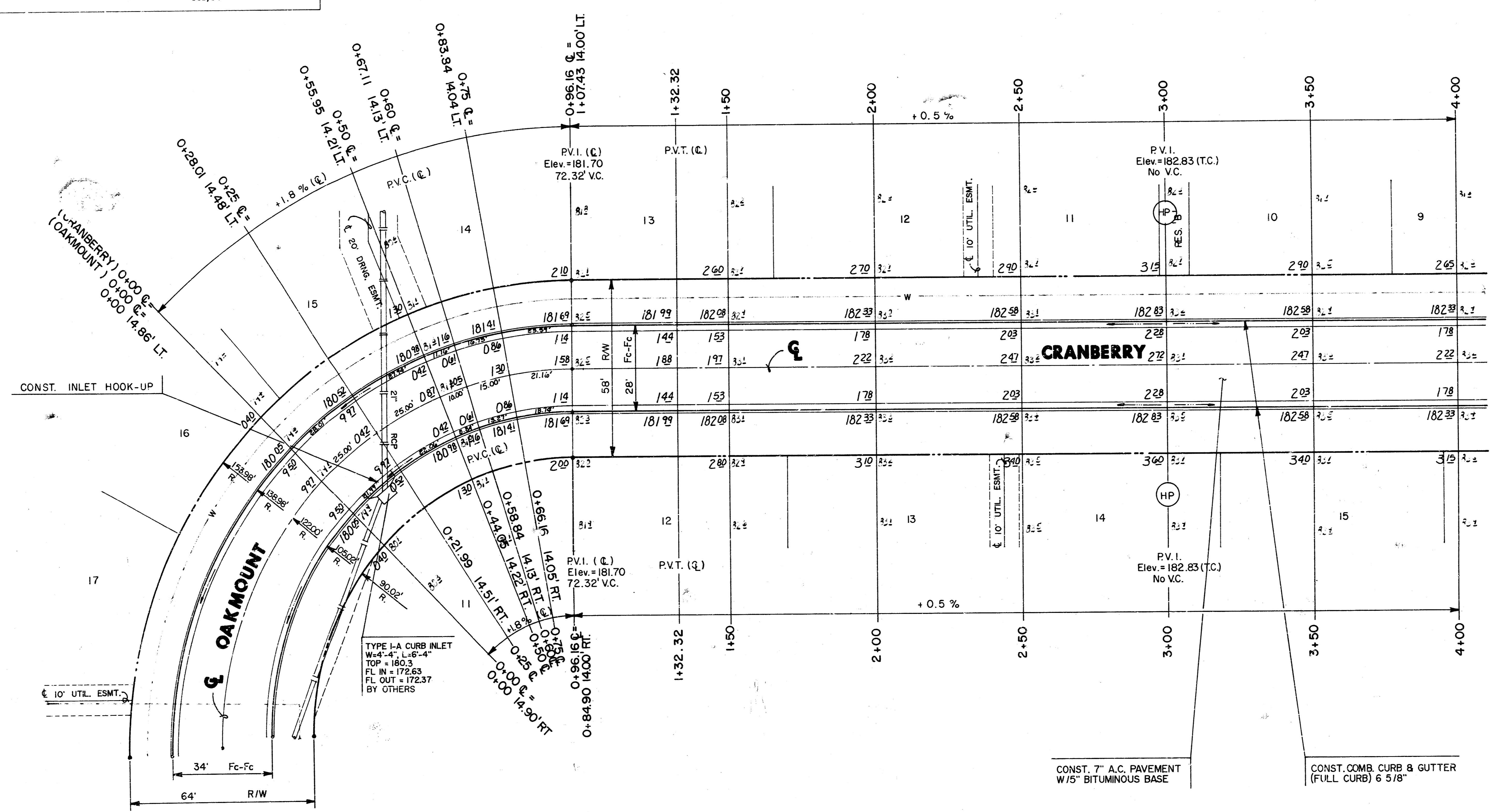
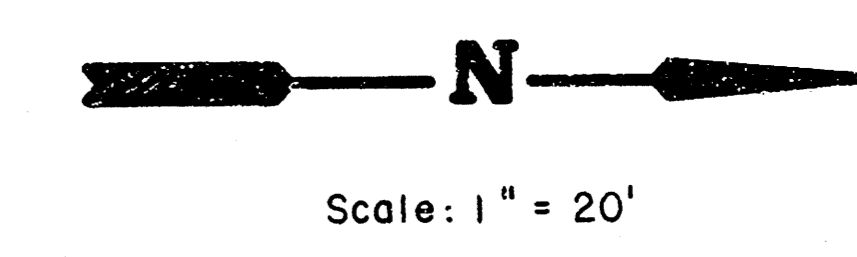
Sheet
5
 of 14

$\Delta = 44^{\circ}17'14''$ R = 138.98' T = 56.56' L = 107.43' LC = 104.77'

CURVE DATA BASED ON LEFT FACE OF CURB $\Delta/2 = 22^{\circ}08'37''$

STATION	CHORD LENGTH		DEFLECTION	TOTAL DEFLECTION
	ARC	8' Off LtCb		
0+00.00	-	-	00°00'00"	00°00'00"
0+28.01	28.01'	29.57'	05°46'25"	05°46'25"
0+55.55	27.94'	29.50'	05°48'33"	11°31'59"
0+83.84	16.73'	17.68'	02°18'01"	13°50'00"
1+07.43	23.59'	24.81'	04°51'42"	22°08'37"

Def/Pt = 12.36777 Min.



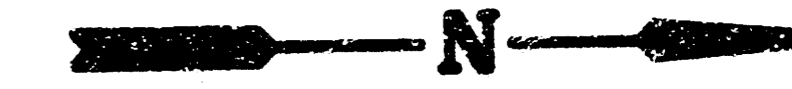
$\Delta = 46^{\circ}19'10''$ R = 105.02' T = 44.92' L = 84.90' LC = 82.61'

CURVE DATA BASED ON RIGHT FACE OF CURB $\Delta/2 = 23^{\circ}09'35''$

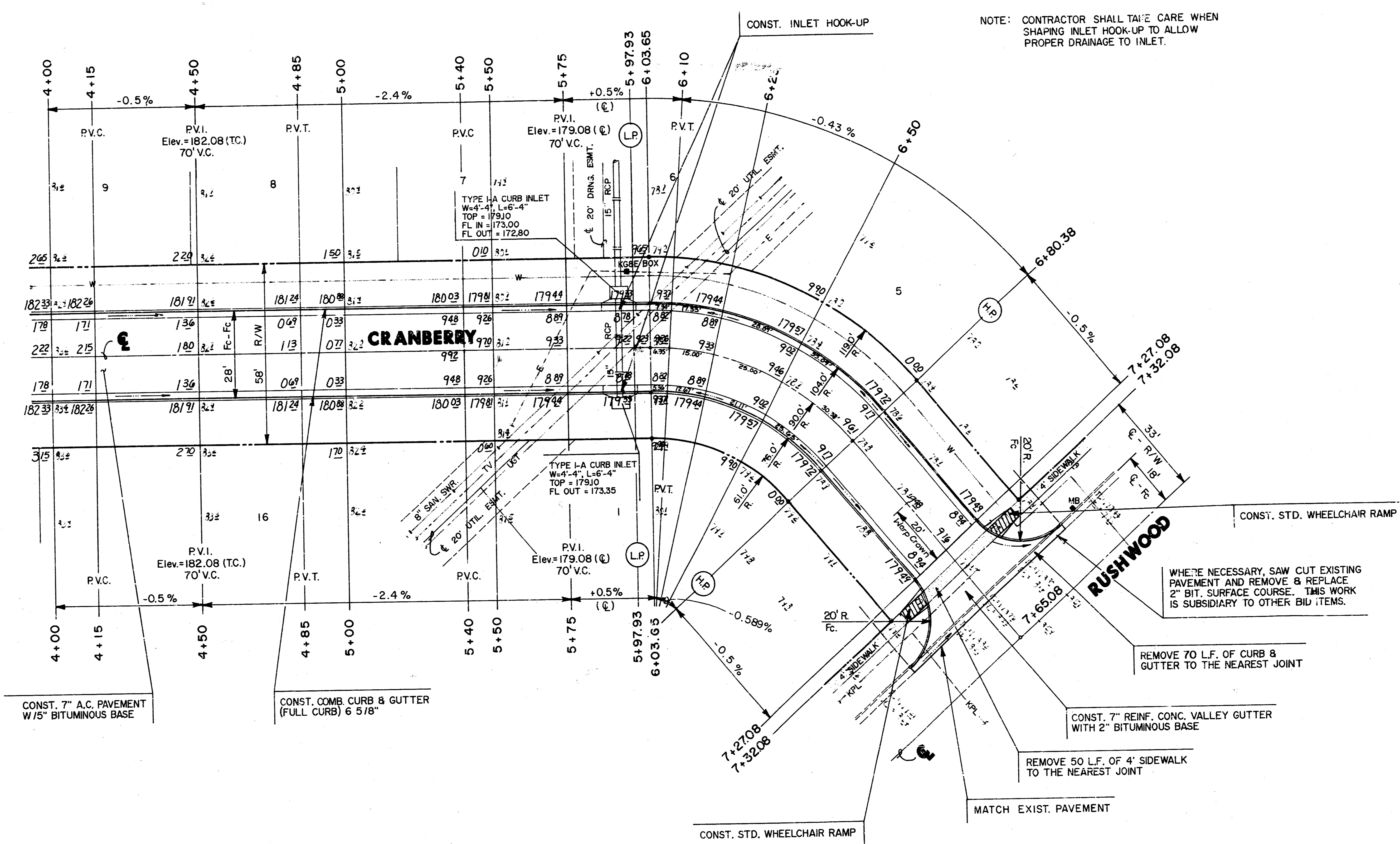
STATION	CHORD LENGTH		DEFLECTION	TOTAL DEFLECTION
	ARC	8' Off RtCb		
0+00.00	-	-	00°00'00"	00°00'00"
0+21.99	21.99'	20.28'	05°59'55"	05°59'55"
0+44.05	22.06'	20.34'	06°01'03"	12°00'58"
0+58.84	14.79'	13.65'	04°02'04"	16°03'02"
0+84.90	18.74'	17.29'	05°06'44"	23°09'35"

Def/Pt = 16.36711 Min.

	CITY OF WICHITA	Design GJA
	CRANBERRY	Drawn by DPR
	PROJ. NO. 472-81941	Checked by DCH
		Date APRIL 1991
		job no
MID-KANSAS ENGINEERING CONSULTANTS PA 3500 NORTH ROCK ROAD BUILDING #800 WICHITA, KANSAS 67226	636-5566	Sheet 6 of 14



Scale: 1" = 20'



NOTE: CONTRACTOR SHALL TAKE CARE WHEN SHAPING INLET HOOK-UP TO ALLOW PROPER DRAINAGE TO INLET.

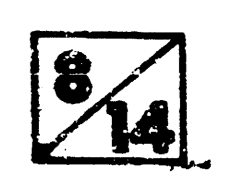
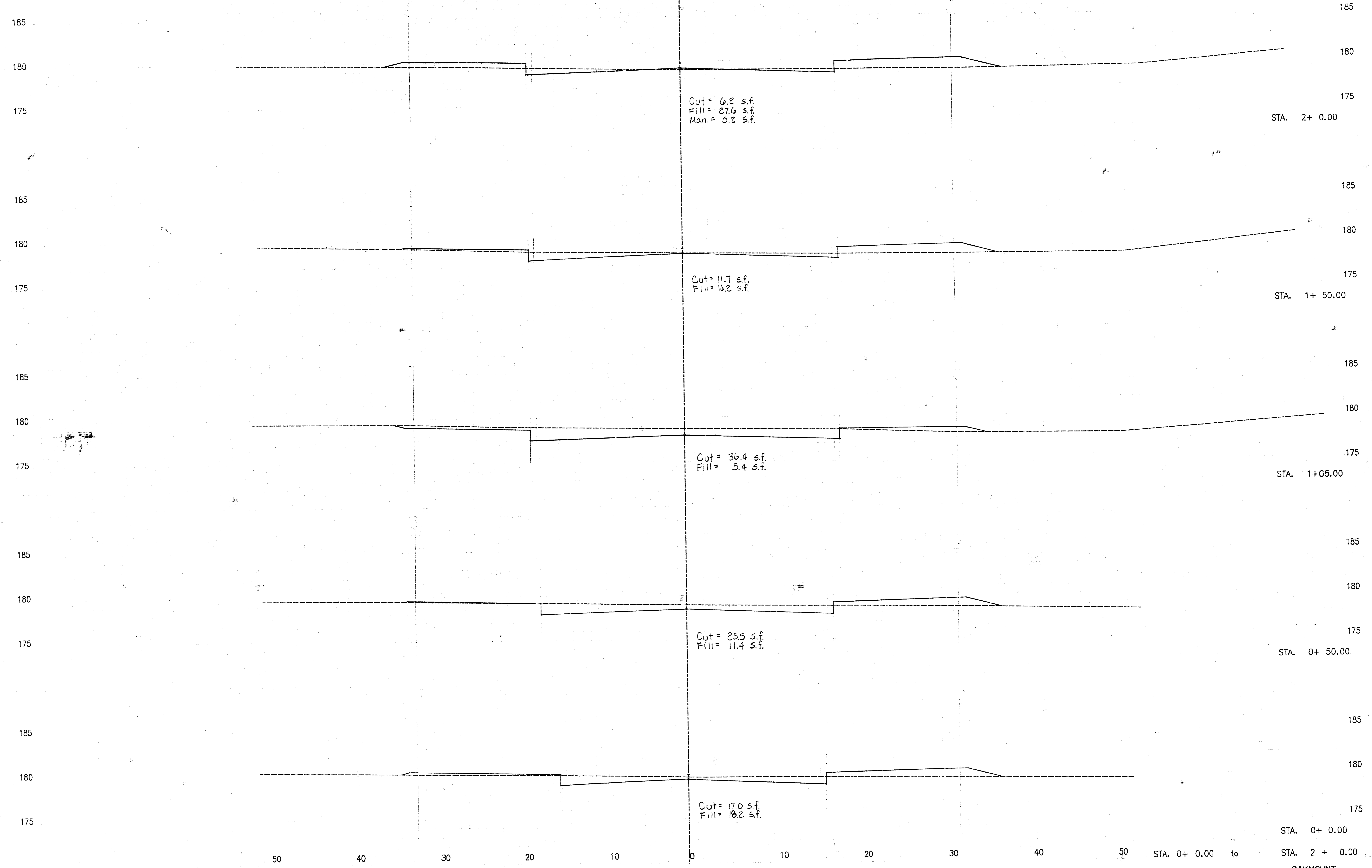
$\Delta = 48^{\circ}50'45''$ $R = 90.00'$ $T = 40.87'$ $L = 76.73'$ $LC = 74.42'$
 CURVE DATA BASED ON CENTERLINE $\Delta/2 = 24^{\circ}25'22''$

STATION	CHORD LENGTH				TOTAL DEFLECTION	
	ARC	8' off LcB	8' off Rcb	DEFLECTION	DEFLECTION	
6+03.65	-	-	-	00°00'00"	00°00'00"	
6+10.00	6.35'	7.90'	4.80'	02°01'17"	02°01'17"	
6+25.00	15.00'	18.65'	11.32'	04°46'29"	06°47'45"	
6+50.00	25.00'	31.01'	18.83'	07°57'28"	14°45'13"	
6+80.38	30.38'	37.52'	22.84'	09°40'09"	24°25'23"	

Def/Pc = 19.09859 Min.

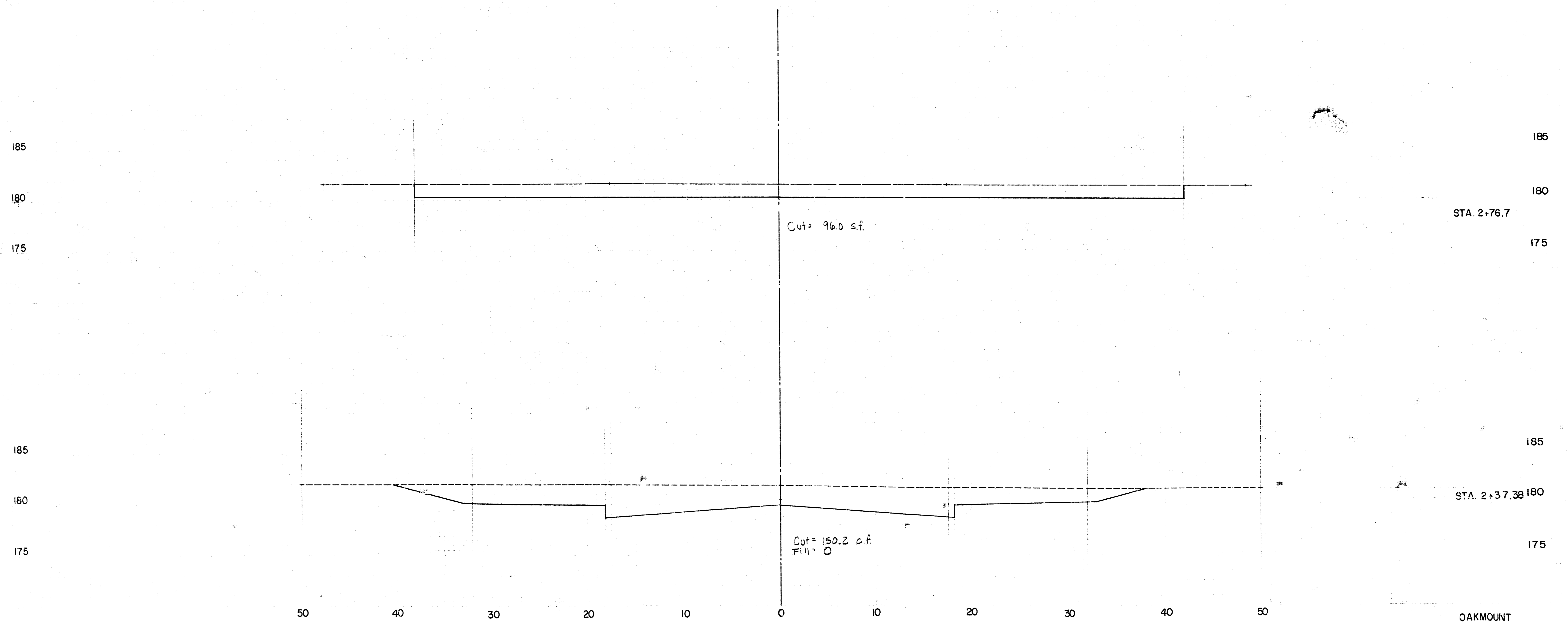
	CITY OF WICHITA	Design GJA
	CRANBERRY	Drawn by DPR
	PROJ. NO. 472-81941	Checked by DCH
		Date APRIL 1991
		Job no.
MID-KANSAS ENGINEERING CONSULTANTS PA 3500 NORTH ROCK ROAD BUILDING #800 WICHITA, KANSAS 67226		Sheet 7 of 14

TEAL COVE 3RD
PAVING CROSS-SECTIONS
PROJECT NO. 472-81941



OAKMOUNT

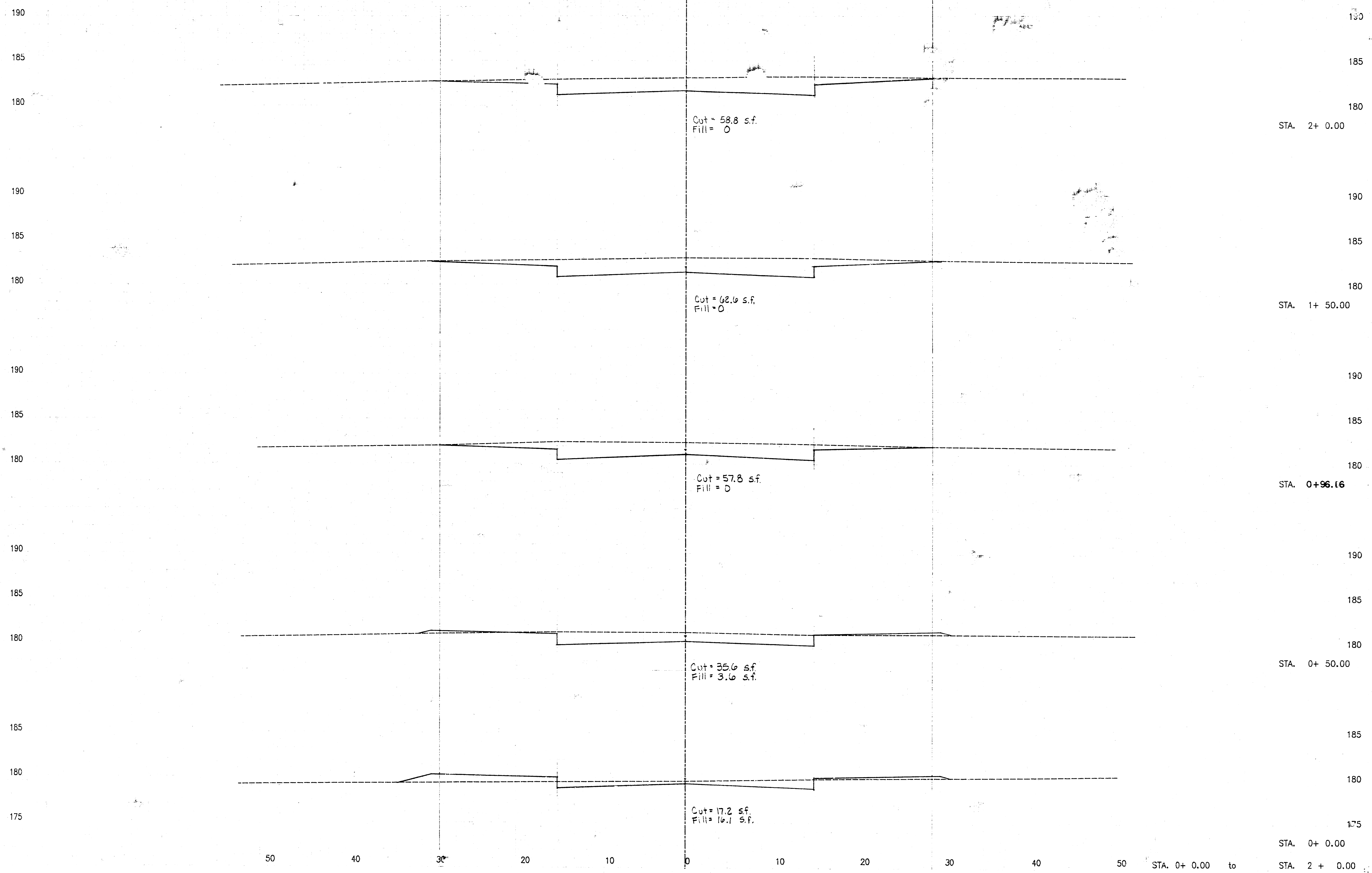
TEAL COVE 3RD
PAVING CROSS-SECTIONS
PROJ. NO. 472-81341



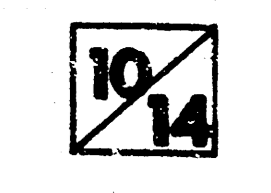
9/14

OAKMOUNT

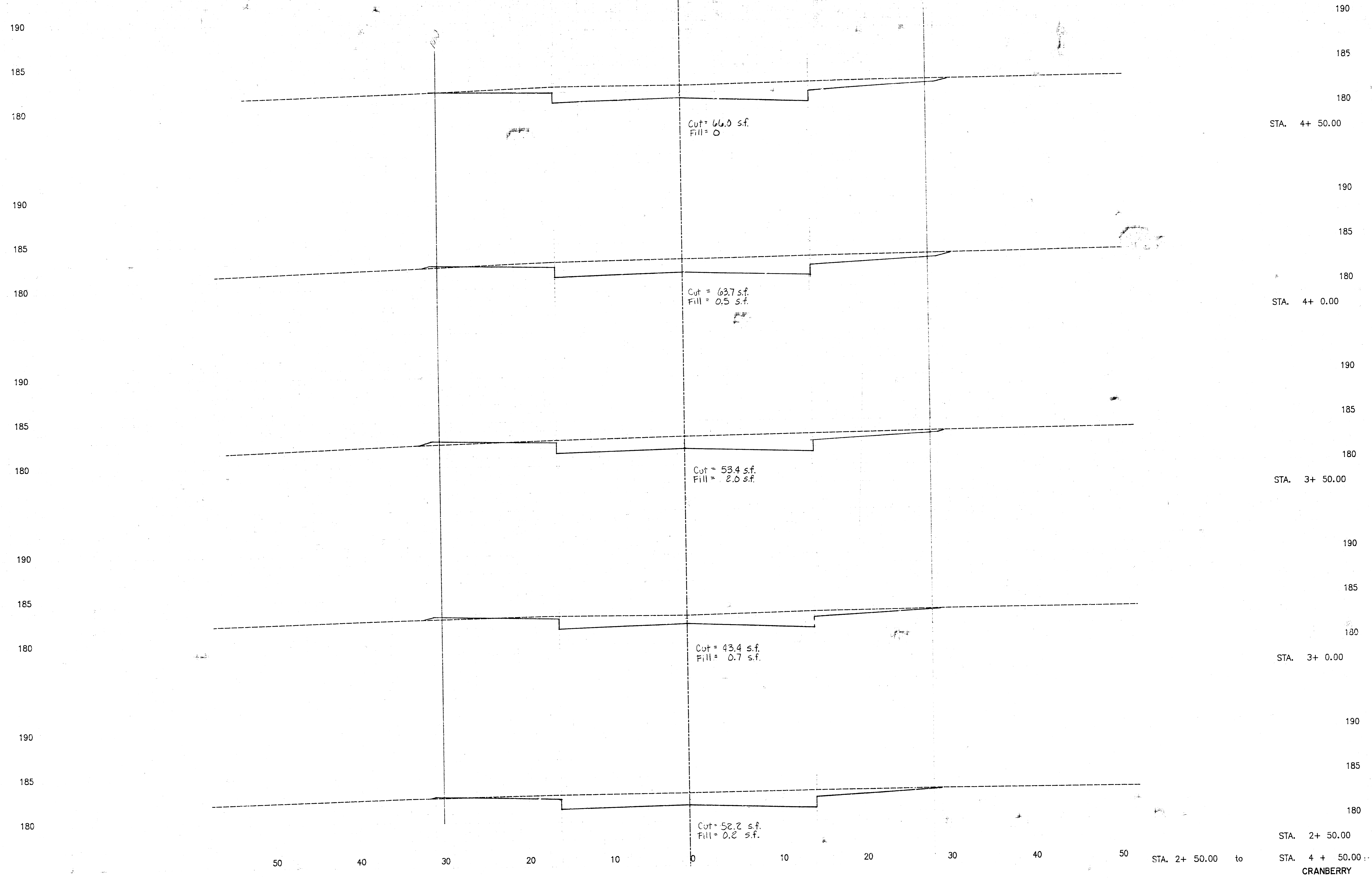
TEAL COVE 3RD
PAVING CROSS-SECTIONS
PROJECT NO. 472-81941



STA. 0+ 0.00
STA. 2 + 0.00
CRANBERRY

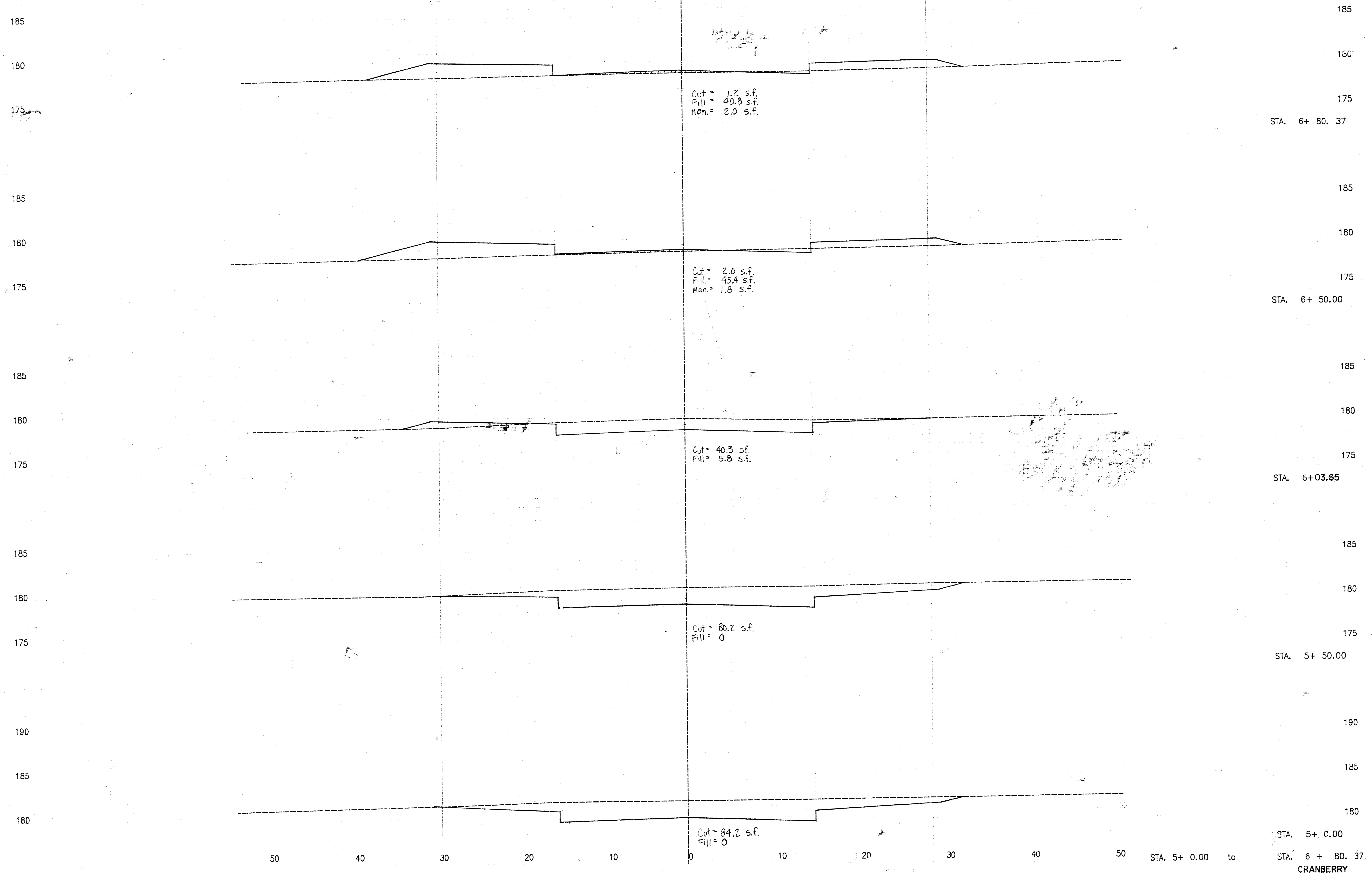


TEAL COVE 3RD
 PAVING CROSS-SECTIONS
 PROJECT NO. 472-81941



STA. 2+ 50.00 to
 STA. 4+ 50.00
 CRANBERRY

TEAL COVE 3RD
PAVING CROSS-SECTIONS
PROJECT NO. 472-81941



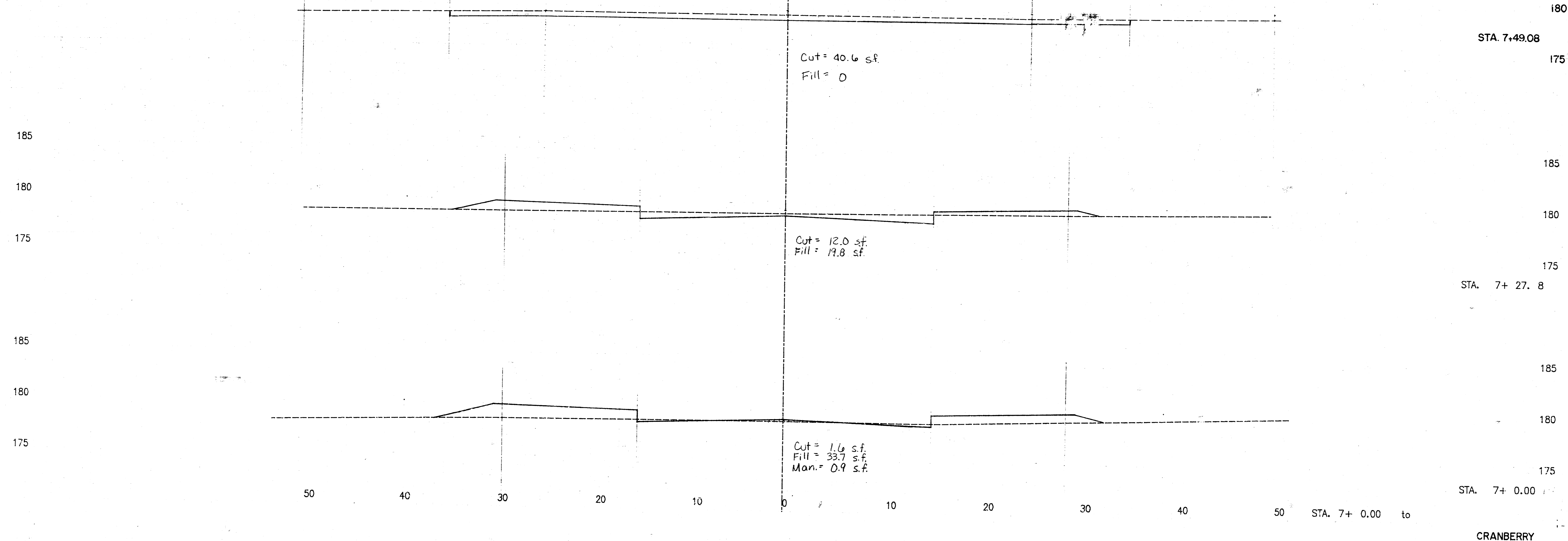
12/14

STA. 5+ 0.00 to STA. 6 + 80.37.
CRANBERRY

TEAL COVE 3RD
PAVING CROSS-SECTIONS
PROJECT NO. 472-81941

TEAL COVE THIRD --- EARTHWORK QUANTITIES

STATION	DIST.	AREA				VOLUME				
		CUT S.F.	LF S.F.	C.F. S.F.	M.F. S.F.	CUT C.Y.	FILL C.Y.	C.F. C.Y.	M.F. C.Y.	
OAKMONT										
0.00		17.0	18.2	0.0	0.0					
50.00	50.00	25.5	11.4	0.0	0.0	38.4	27.4	0.0	0.0	
105.00	55.00	38.4	5.4	0.0	0.0	63.0	17.1	0.0	0.0	
150.00	45.00	11.7	16.2	0.0	0.0	40.1	18.0	0.0	0.0	
200.00	50.00	6.2	27.8	0.0	0.2	16.8	40.8	0.3	0.2	
237.38	37.38	150.2	0.0	0.0	0.0	108.3	19.1	0.0	0.1	
276.70	39.32	96.0	0.0	0.0	0.0	179.3	0.0	0.0	0.0	
CRANBERRY										
0.00		17.2	16.1	0.0	0.0					
50.00	50.00	35.8	3.8	0.0	0.0	48.9	18.2	0.0	0.0	
98.16	48.16	57.8	0.0	0.0	0.0	79.8	3.1	0.0	0.0	
150.00	51.84	62.6	0.0	0.0	0.0	120.0	0.0	0.0	0.0	
200.00	50.00	58.8	0.0	0.0	0.0	112.4	0.0	0.0	0.0	
250.00	50.00	52.2	0.2	0.0	0.0	102.8	0.2	0.0	0.0	
300.00	50.00	43.3	0.7	0.0	0.0	88.4	0.8	0.0	0.0	
350.00	50.00	53.4	2.0	0.0	0.0	89.5	2.5	0.0	0.0	
400.00	50.00	63.7	0.0	0.0	0.0	108.4	2.3	0.0	0.0	
450.00	50.00	66.0	0.0	0.0	0.0	120.1	0.3	0.0	0.0	
500.00	50.00	84.2	0.0	0.0	0.0	139.1	0.0	0.0	0.0	
550.00	50.00	80.2	0.0	0.0	0.0	152.2	0.0	0.0	0.0	
603.66	53.66	40.3	5.8	0.0	0.0	119.7	5.8	0.0	0.0	
650.00	46.34	2.0	45.4	0.0	2.0	36.3	43.9	0.0	1.7	
680.37	30.37	1.2	40.8	0.0	2.0	1.8	48.5	0.0	2.2	
700.00	19.63	1.8	33.7	0.0	0.9	1.0	27.1	0.0	1.1	
727.80	27.80	12.0	19.8	0.0	0.0	7.0	27.5	0.0	0.5	
749.08	21.28	40.6	19.8	0.0	0.0	20.7	15.6	0.0	0.0	
						PROJECT TOTAL =	1794.9	318.2	0.0	5.8



185

180

STA. 7+49.08

175

185

180

175

185

180

175

STA. 7+27.8

185

180

175

185

180

175

STA. 7+0.00

to

CRANBERRY

