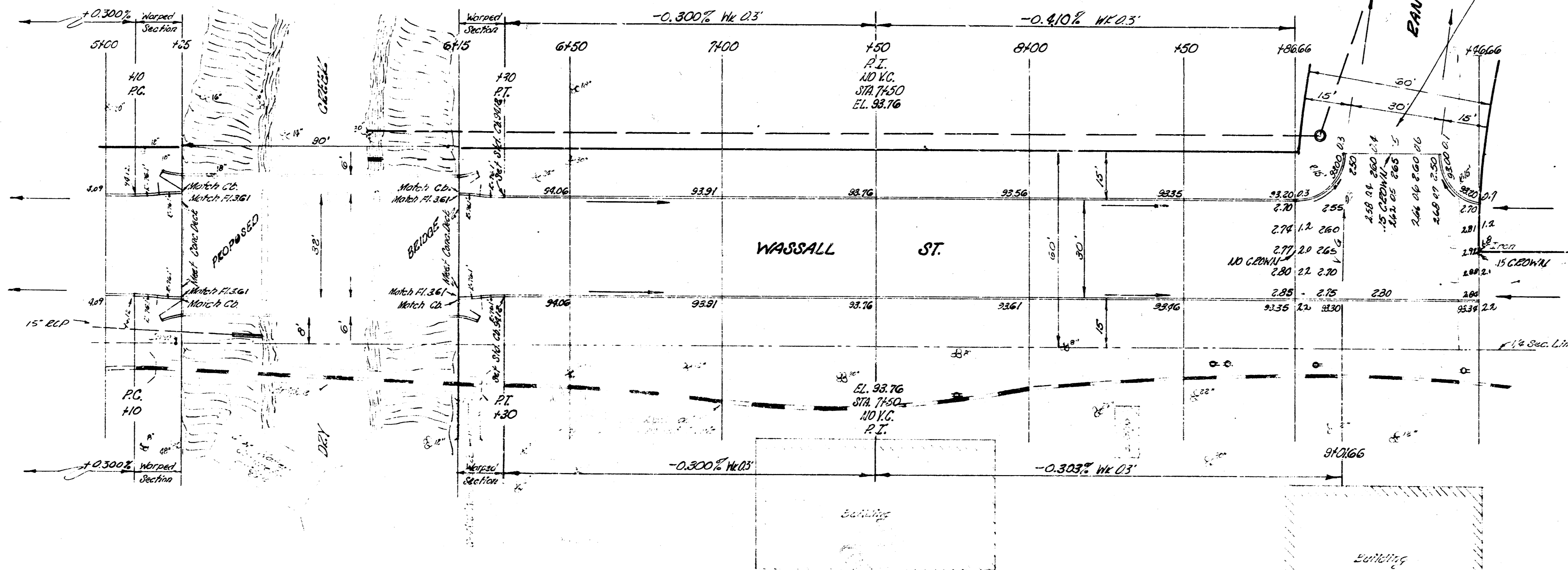
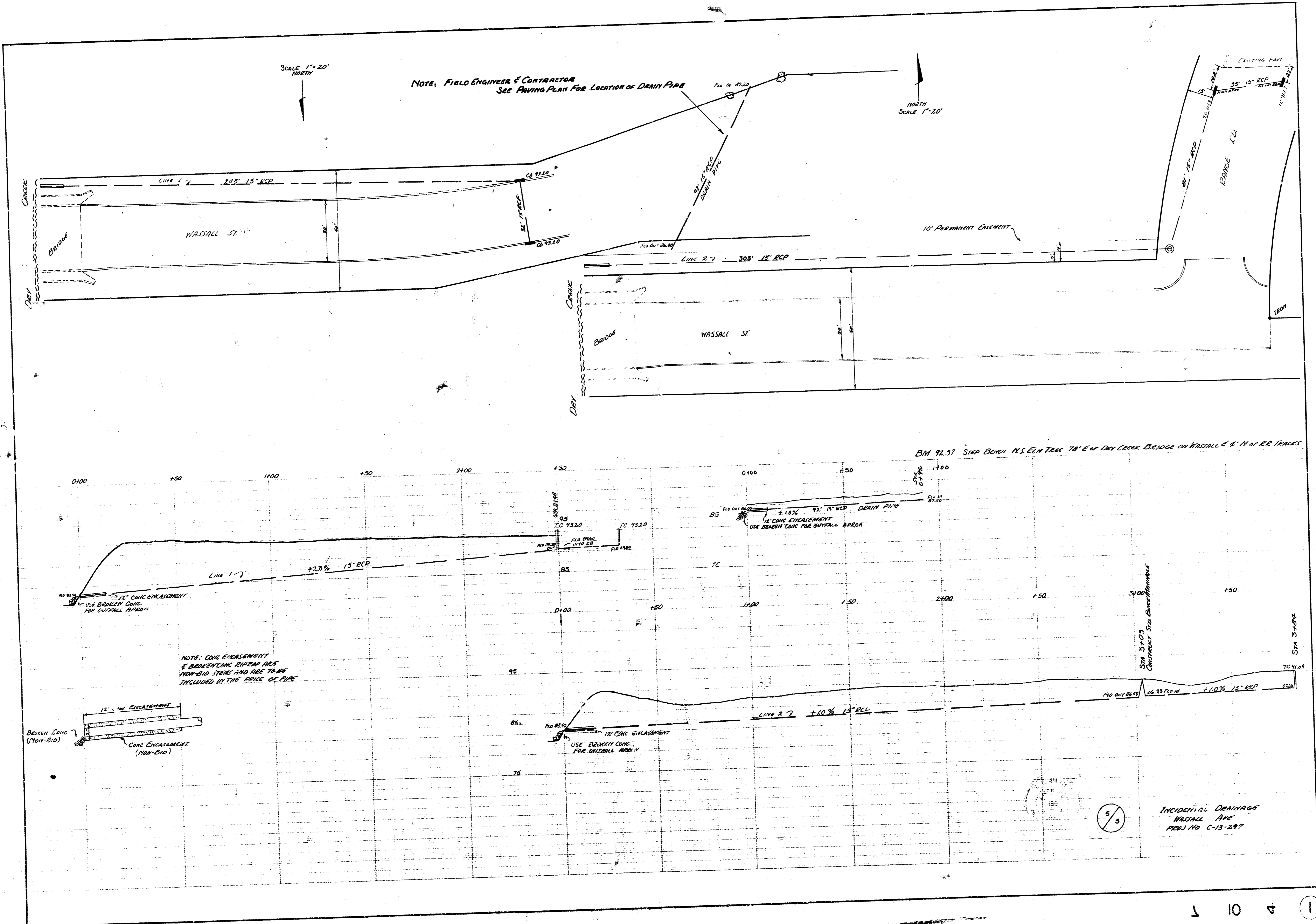


NOTE TO FIELD ENGINEER & CONTRACTOR:
 Werge Curb & Pavement to conform
 with bridge from Sta. 6+40 to Sta.
 6+25 & from Sta. 6+15 to Sta. 6+30.

NOTE FIELD ENGR. & CONTRACTOR:
 COMPACT FILL FROM TOP PART @ 1/4" WASSALL TO NATURAL
 GROUND 50' NORTH ON RANGE RD.



WASSALL ST.
 2/5
 PROJ. NO. C-13-271



NOTE: FIELD ENGINEER & CONTRACTOR
SEE PAVING PLAN FOR LOCATION OF DRAIN PIPE

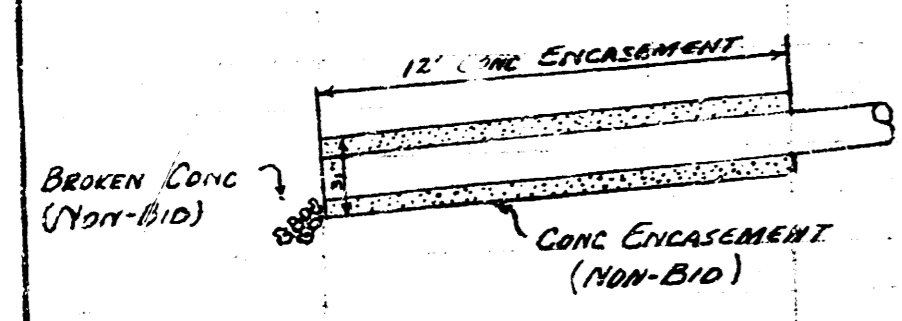
SCALE 1"=20'
NORTH

NORTH
SCALE 1"=20'

10' PERMANENT ENCASMENT

BM 92.51 STEP BENCH N.S. ELM TREE 70' E of DRY CREEK BRIDGE on WASSALL E 8' N of RR TRACES

NOTE: CONC ENCASEMENT
& BROKEN CONC RIPRAP ARE
NON-BID ITEMS AND ARE TO BE
INCLUDED IN THE PRICE OF PIPE



5/5

INCIDENTAL DRAINAGE
WASSALL AVE
PROJ NO C-13-297