

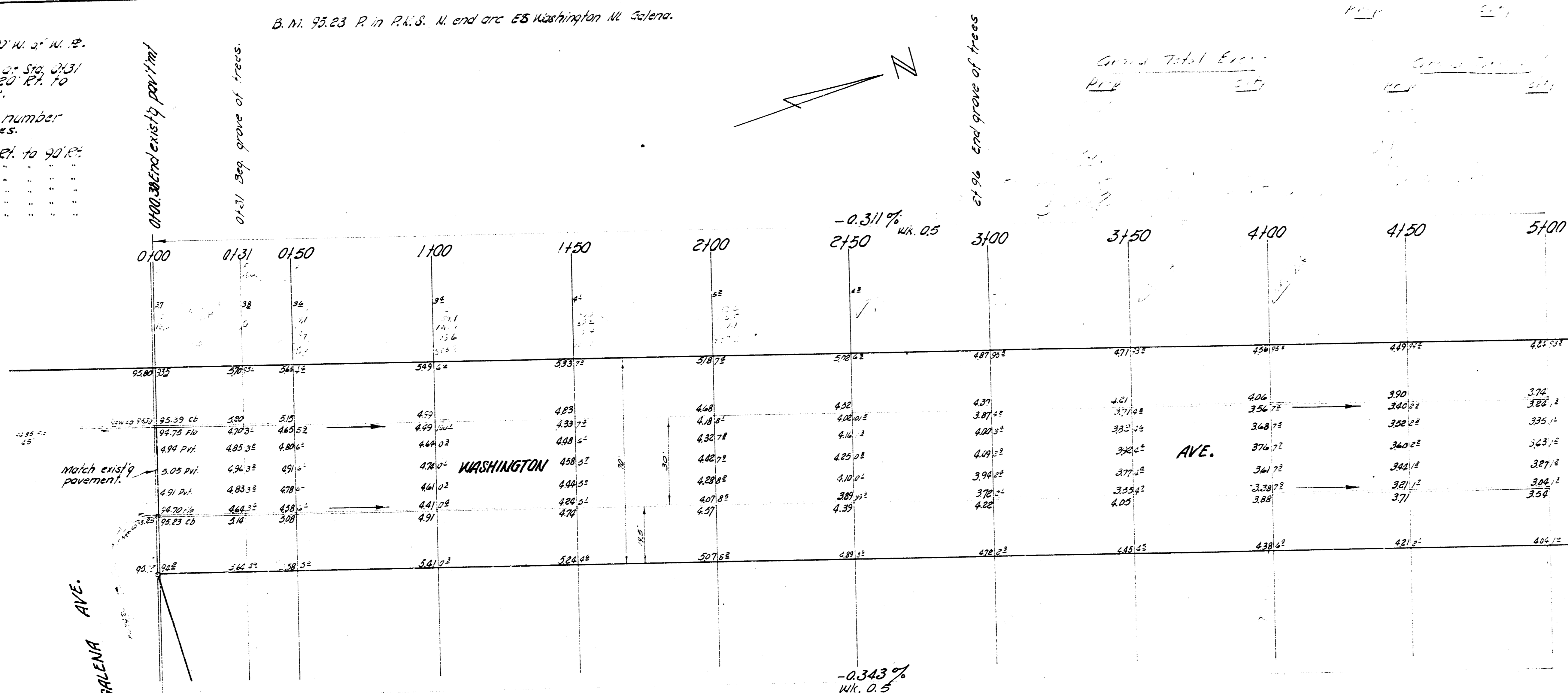
NOTE:

Base line of survey is 20' N. of N. 12.
 A Grove of trees 20' W. of Sta. 3131
 30' ends of 2+96, 20' R.H. to
 90 R.H. of base line.

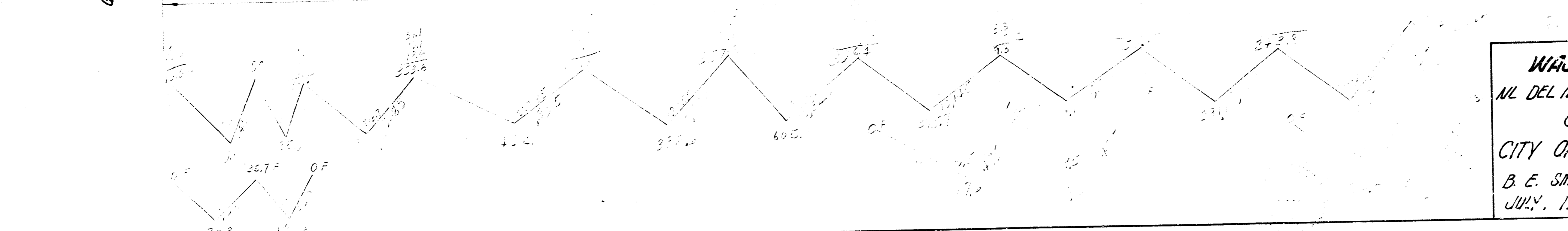
Listed below are the number
 of each size of trees.

27'-4" Trees 20' R.H. to 90 R.H.	
30'-0" "	
30'-6" "	
30'-12" "	
30'-18" "	
30'-24" "	

B.M. 95.23 R. in P.A.S. N. end are 55 Washington W. Galena.

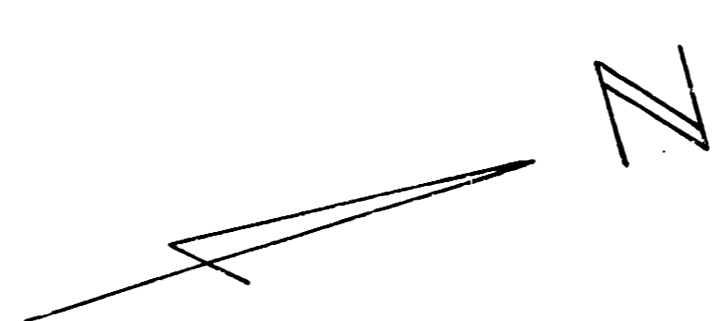


Area Total Exc.	
Exc.	227
Imp.	217

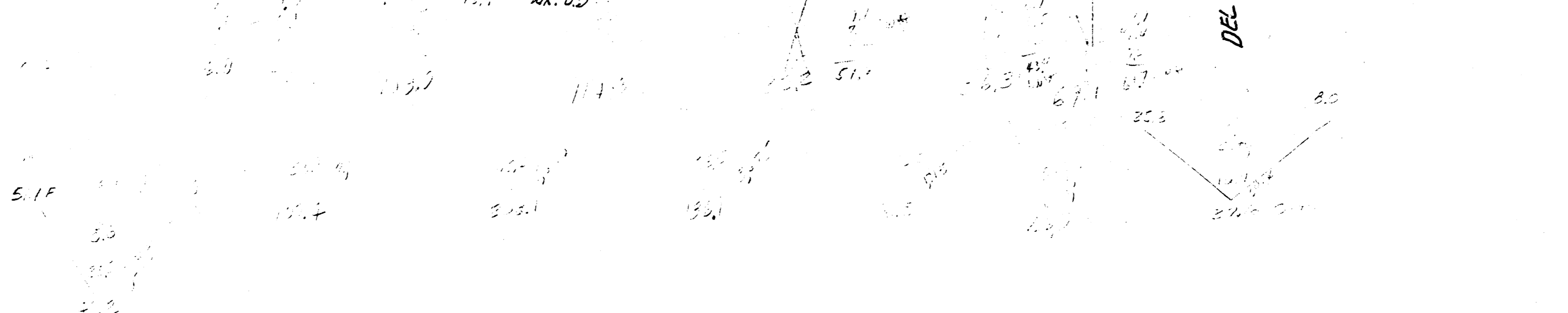
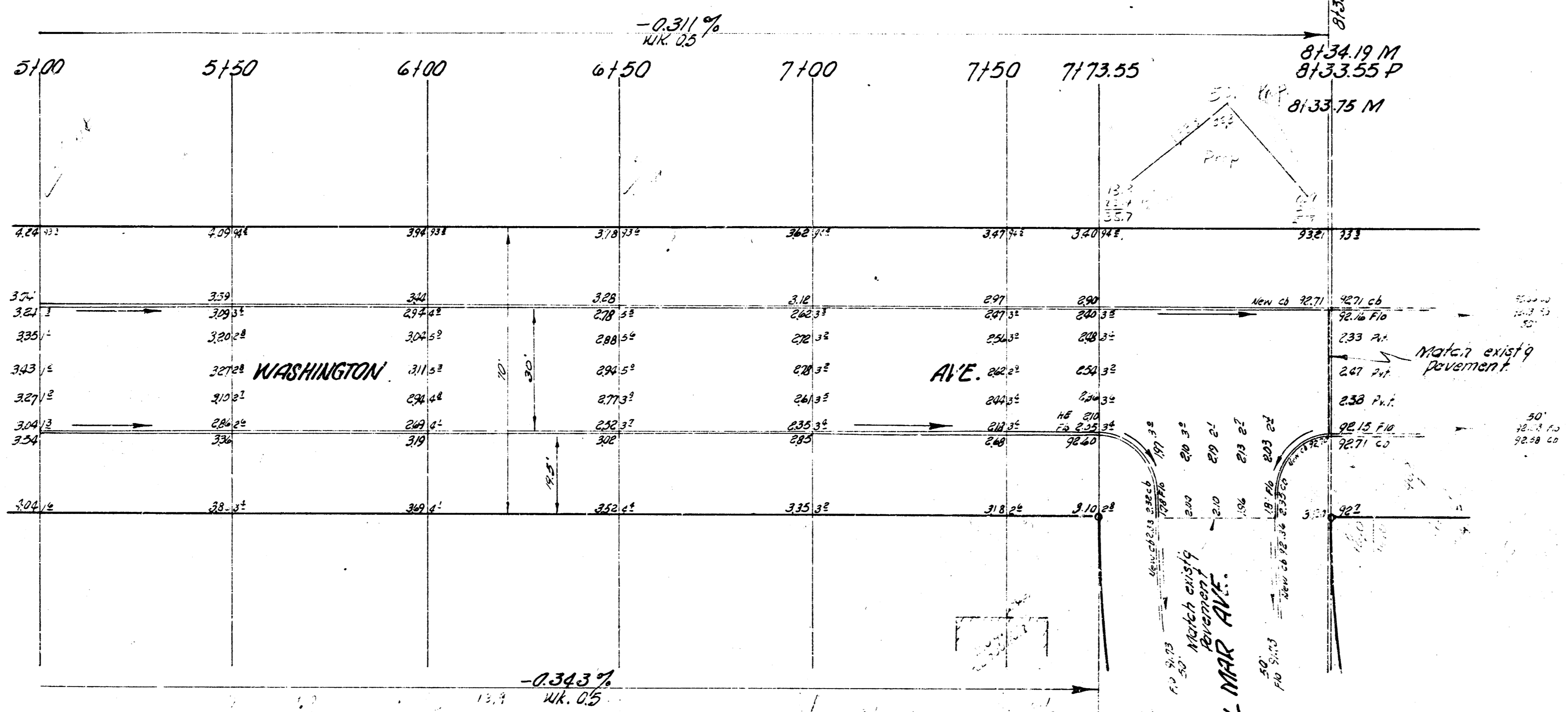


①
②

WASHINGTON AVE.
 N.L. DEL MAR - N.L. GALENA
 30' CONC. & C.B.
 CITY OF WICHITA, KANSAS
 B. E. SMITH CITY ENGINEER
 JULY, 1956 PROJ. NO. C14-160



3. M. 92.20 P.M. P.A. S. W. curb profile W. Del. Mar.



②
②
WASHINGTON AVE.
N. DEL MAR - N. GALENA
PROJ. NO. CH-160