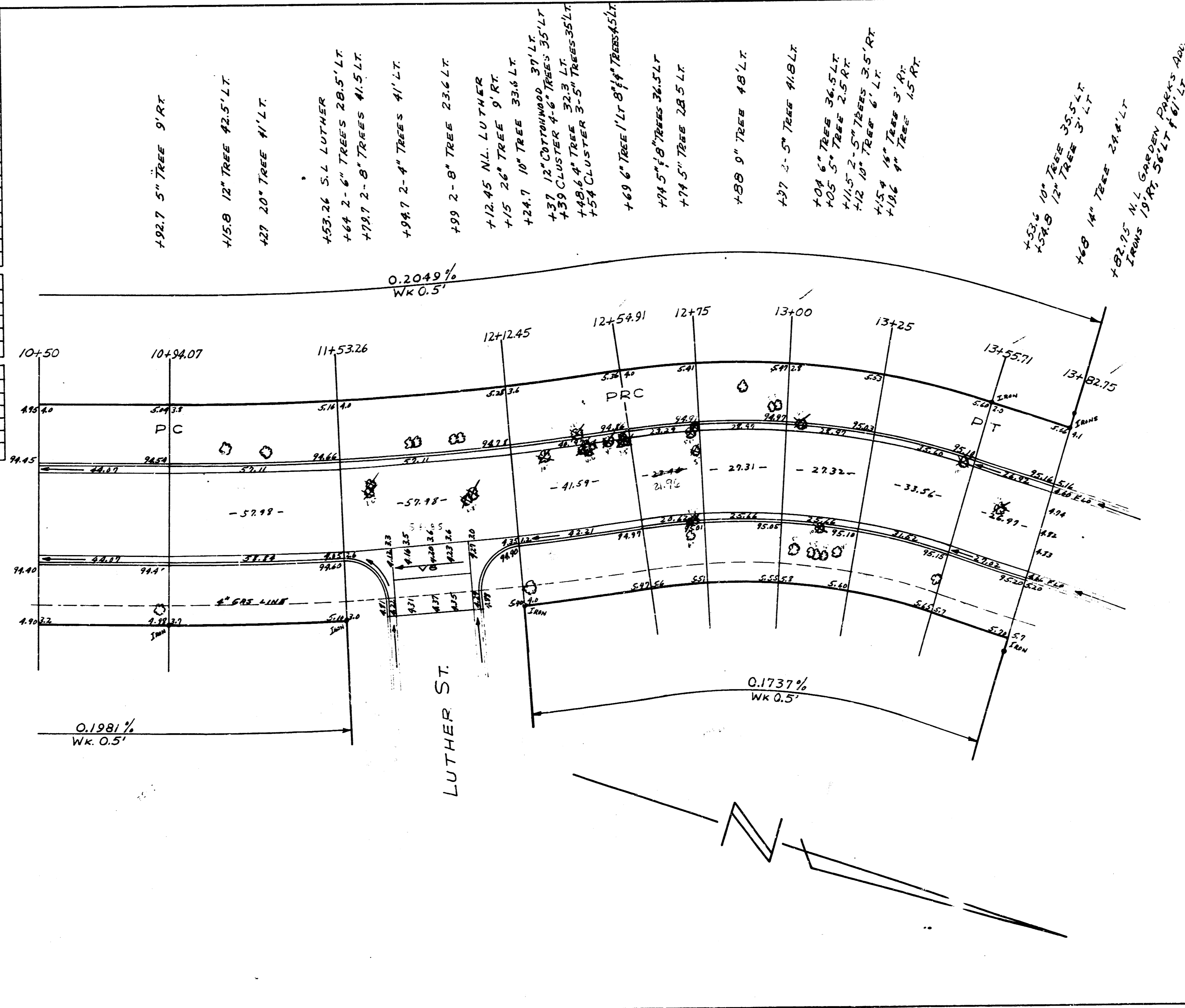


CURVE DATA BASED ON 6' OFFSET E.C.B. R-1978.86 Δ 21° 5' 0"				
STATIONING	CHORD & OFFSET E.C.B.	CHORD & OFFSET W.C.B.	DEF. L	TOTAL DEF.
0+00	P.C.			
0+39.72	59.72	59.45	51° 52'	51' 52"
1+00	10.28	39.43	34° 59'	1° 26' 51"
1+50	50.00	48.94	43° 26"	2° 10' 17"
2+00	50.00	48.94	43° 26"	2° 53' 43"
2+50	50.00	48.94	43° 26"	3° 37' 31"
2+60.8	13.80	10.51	9° 23'	3° 46' 52"
3+20.48	59.66	58.40	51° 50'	4° 38' 22"
3+50	29.50	29.88	25° 38'	5° 4'
4+00	50.00	48.94	43° 26"	5° 47' 26"
4+50	50.00	48.94	43° 26"	6° 30' 52"
5+00	50.00	48.94	43° 26"	7° 14' 18"
5+24.83	24.82	24.30	21° 34'	7° 35' 52"
5+49.57	60.74	59.45	52° 46"	8° 28' 38"
6+00	14.42	14.12	12° 32'	8° 41' 10"
6+50	50.00	48.94	43° 26"	9° 24' 36"
7+00	50.00	48.94	43° 26"	10° 8' 2"
7+30.54	30.54	29.89	22° 32'	10° 34' 34"

CURVE DATA BASED ON 6' OFFSET E.C.B. R-1023.93 Δ- 9°				
STATIONING	CHORD & OFFSET E.C.B.	CHORD & OFFSET W.C.B.	DEF. L	TOTAL DEF.
10+94.07	P.C.			
11+53.26	59.18	56.75	14° 39' 22"	1° 39' 22"
12+12.24	59.18	56.75	14° 39' 22"	3° 18' 44"
12+54.91	42.45	40.71	10° 11' 16"	4° 30'

CURVE DATA BASED ON 6' OFFSET E.C.B. R-226.32 Δ- 25° 31'				
STATIONING	CHORD & OFFSET E.C.B.	CHORD & OFFSET W.C.B.	DEF. L	TOTAL DEF.
12+54.91	P.C.			
12+75	20.08	23.79	2° 32' 34"	2° 32' 34"
13+00	24.98	29.42	3° 9' 51"	5° 42' 25"
13+25	24.98	29.42	3° 9' 51"	8° 52' 16"
13+55.71	30.69	36.38	3° 53' 14"	12° 45' 30"



(3/5)

WASHINGTON

Proj. No. C14-27