

**EARTHWORK**

1,063.9 + 160.4 = 1,170.3	C.Y.	EXCAVATION
164.8 + 16.5 = 181.3	C.Y.	COMP. FILL
325.0	C.Y.	COMP. FILL - S.G.M. FOR SIDEWALK SUBGRADE
<b>TOTAL = 506.3</b>	<b>C.Y.</b>	<b>COMP. FILL</b>

**WASHINGTON AVENUE**  
 N. L. KELLOGG STREET TO S. L. DOUGLAS AVE.  
 CITY OF WICHITA, KANSAS  
 B. E. SMITH, CITY ENGINEER  
**49'0"-8" CONC. PAVEMENT & CURB**  
 PROJ. NO. C 19-85

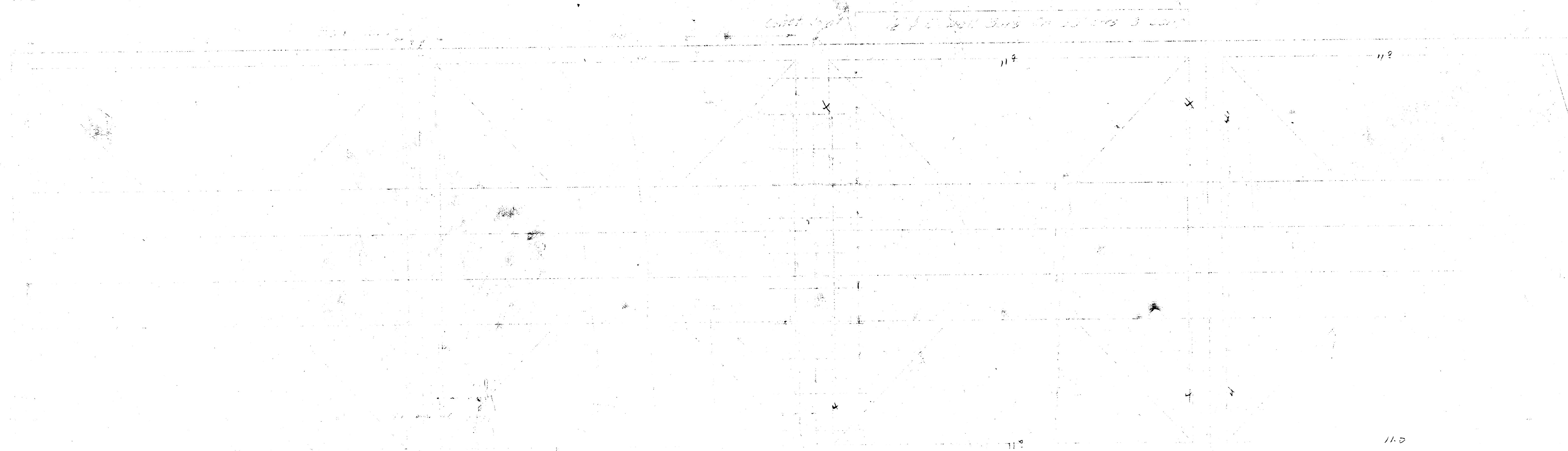
21' Pattern with 3 Trap Bars  
 $(4 \times 140) + (3 \times 12) + (4 \times 150) + (3 \times 24) = 256'$   
 22' Pattern with 3 Trap Bars  
 $(4 \times 140) + (3 \times 12) + (4 \times 150) + (3 \times 24) = 256'$   
 23' Pattern with 3 Trap Bars

TOP 6" OF PAVEMENT SUBGRADE TO BE TREATED WITH LIME OR CEMENT.  
 TYPE OF SUBGRADE TREATMENT TO BE DETERMINED BY ENGINEER AFTER  
 THE EXISTING PAVEMENT HAS BEEN REMOVED.

**TYPICAL SECTION**

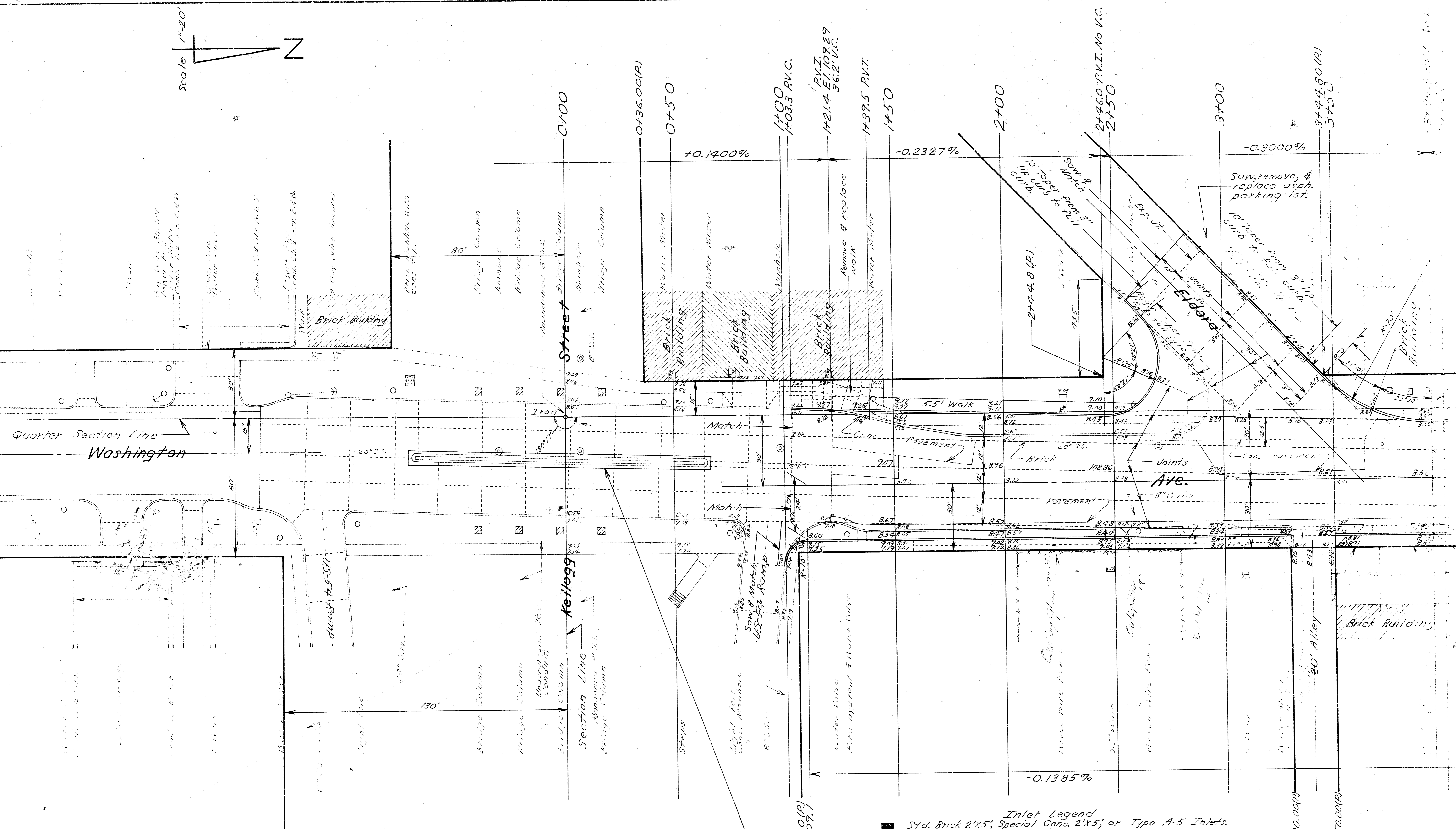
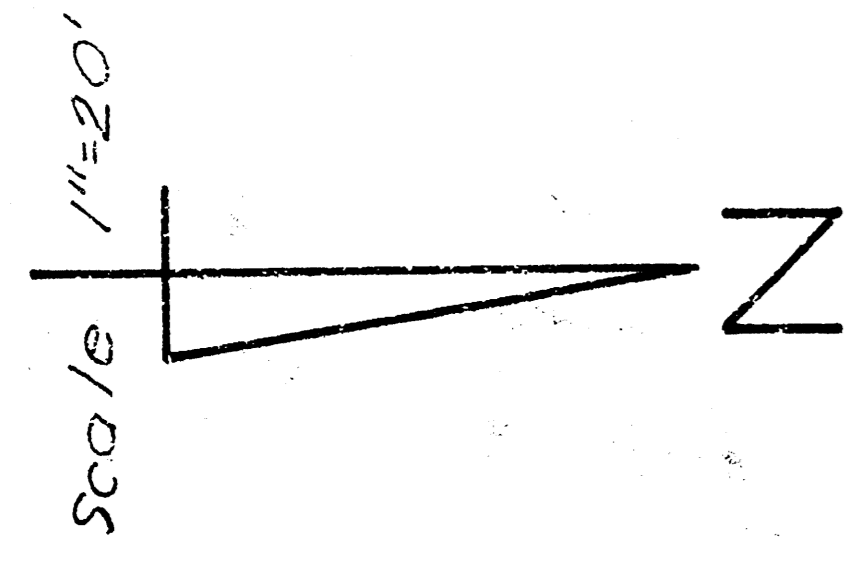
STA. 3+945 TO STA. 24+1905

SEE SHEET NO. 7 FOR GENERAL NOTES, RETAINING WALL DETAIL, CONCRETE STEP DETAILS,  
 AND TYPICAL PAVEMENT SECTION FROM STA. 1+033 TO 3+945 & STA. 24+19.05 TO 25+38.03.  
 RELOCATION OF STORM WATER & SANITARY SEWERS IS NOT SHOWN ON PAVING PLANS. SEE  
 INCIDENTAL DRAINAGE PLANS FOR SEWER LOCATIONS. INLET LOCATIONS ARE SHOWN ON  
 PAVING PLANS.



STEEL PATTERN

35' Steel Bar  
 $(4 \times 140) + (3 \times 12) + (4 \times 150) + (3 \times 24) = 256'$   
 36' Steel Bar  
 $(4 \times 140) + (3 \times 12) + (4 \times 150) + (3 \times 24) = 256'$   
 37' Steel Bar  
 $(4 \times 140) + (3 \times 12) + (4 \times 150) + (3 \times 24) = 256'$   
 38' Steel Bar  
 $(4 \times 140) + (3 \times 12) + (4 \times 150) + (3 \times 24) = 256'$



Contractor to saw and remove exist. medial curb to such limits to expose a minimum length of 12" of wire mesh reinforcement. Pavement to be constructed shall be 8" conc. pavement with welded wire mesh reinforcement. Wire mesh shall be No. 1 guage wires spaced 6" longitudinally and No. 4 guage wires spaced 12" transversally. Pavement shall be paid for at the bid price per Sq. Yd. of 8" Conc. Pavement. Wire mesh reinforcement shall be considered as incidental to the project.

B.M. 109.04 "A" cut on S.E. corner conc. manhole on W. side of Washington approx. 30 Ft. south of Kellogg overpass.

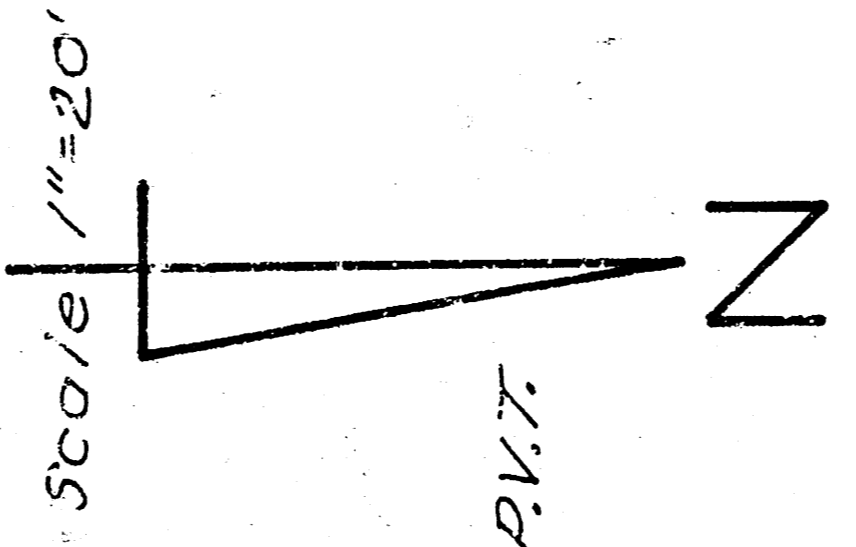
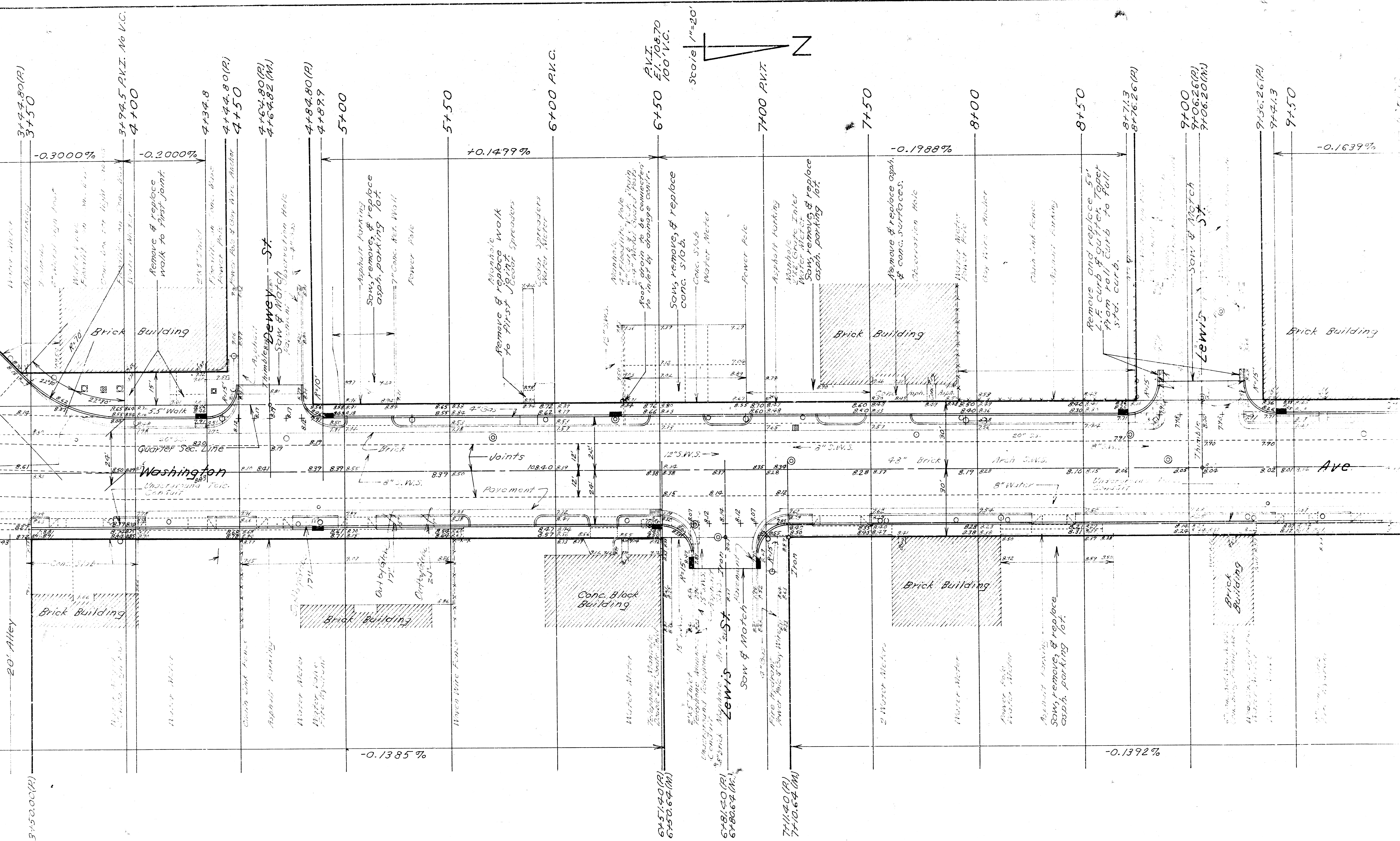
Note: All driveway locations shown on plans are tentative and must be approved by property owners. Paving contractor to adjust all exist. manholes that remain in service and install new manhole rings and covers on these manholes.

**Inlet Legend**  
 ■ Std. Brick 2'x5', Special Conc. 2'x5', or Type A-5 Inlets.  
 ▨ Double 2'x2' Drop Inlet  
 ▩ Type A-5 Special Inlet

See incidental drainage plans for inlet details.  
 Inlets to be constructed by others.

2/16

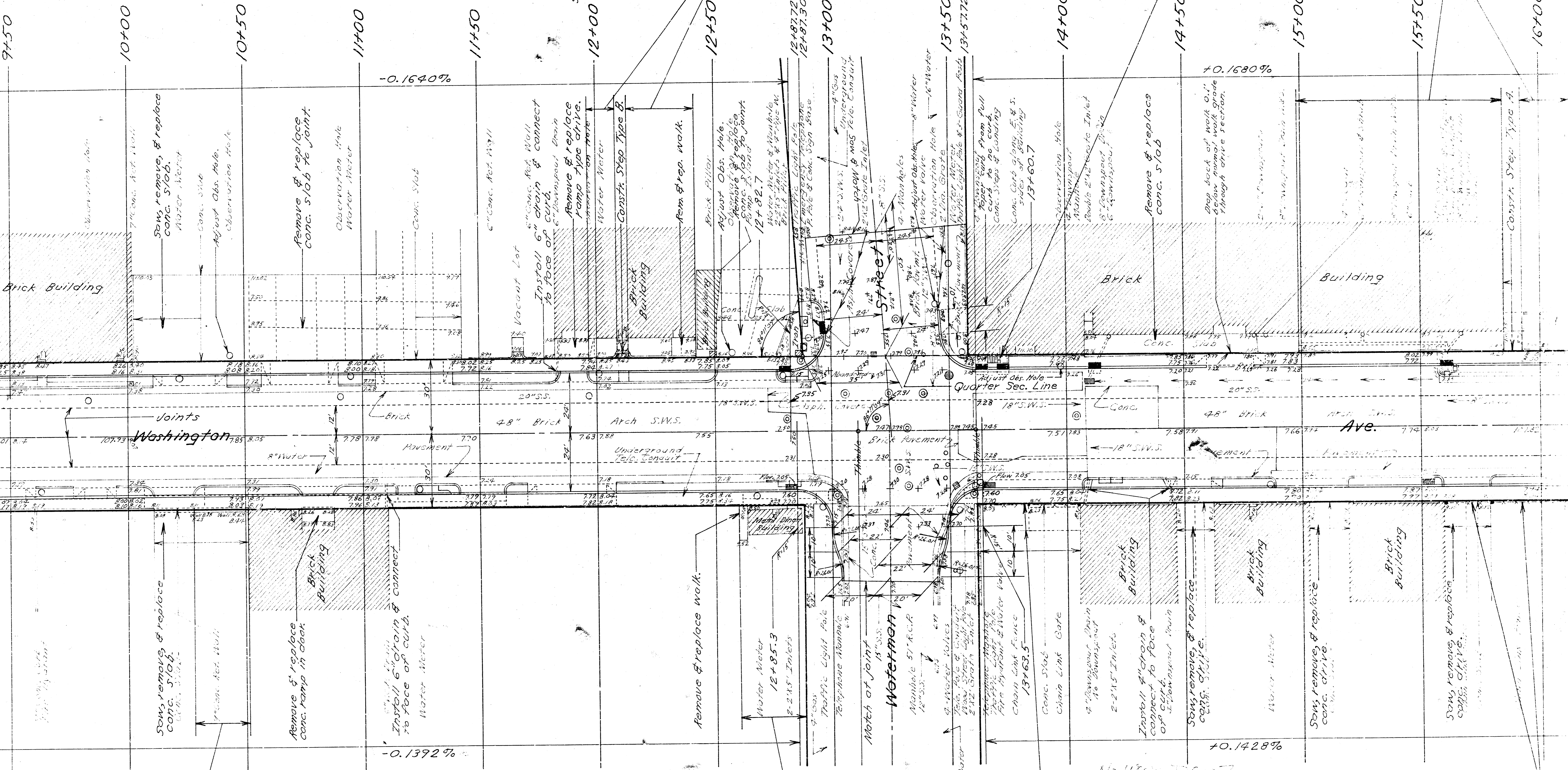
**WASHINGTON AVENUE**  
 N. L. KELLOGG STREET  
 TO S. L. DOUGLAS AVE.  
 CITY OF WICHITA, KANSAS  
 B. E. SMITH, CITY ENGINEER  
 49"0"-8" CONC. PAVEMENT  
 PROJ. NO. C 19-85  
 DATE:



B.M. 109.54 "x" cut on N.W. corner conc. base to flood light 30 Ft. North of S.E. corner building at 447 South Washington.

B.M. 108.91 "x" cut on conc. base to flood light pole approx. 6" east of 4" pole on W. side of Washington and approx. 20 Ft. south of S.L. Lewis East.

WASHINGTON AVENUE  
 N. L. KELLOGG ST. TO S. L. DOUGLAS AVE.  
 PROJ. NO. 19-85



Remove exist. retaining wall and constr. retaining wall Type C.

Remove exist. retaining wall and constr. retaining wall Type B.

Remove conc. steps & landing. Paid for as Set of Steps & Landing Removed.

Scale 1/4"=20'

Remove exist. retaining wall and constr. retaining wall Type A.

Constr. retaining wall Type B along east line of Washington and east approx. 10 Ft. along the south line of Waterman. Taper retaining wall east on Waterman to match exist. ground.

Remove chain link fence and chain link fence gate. Remove and replace conc. slab. Replace fence and gate to match new walk elev.

Remove chain link fence and chain link fence gate. Replace to match new walk elev.

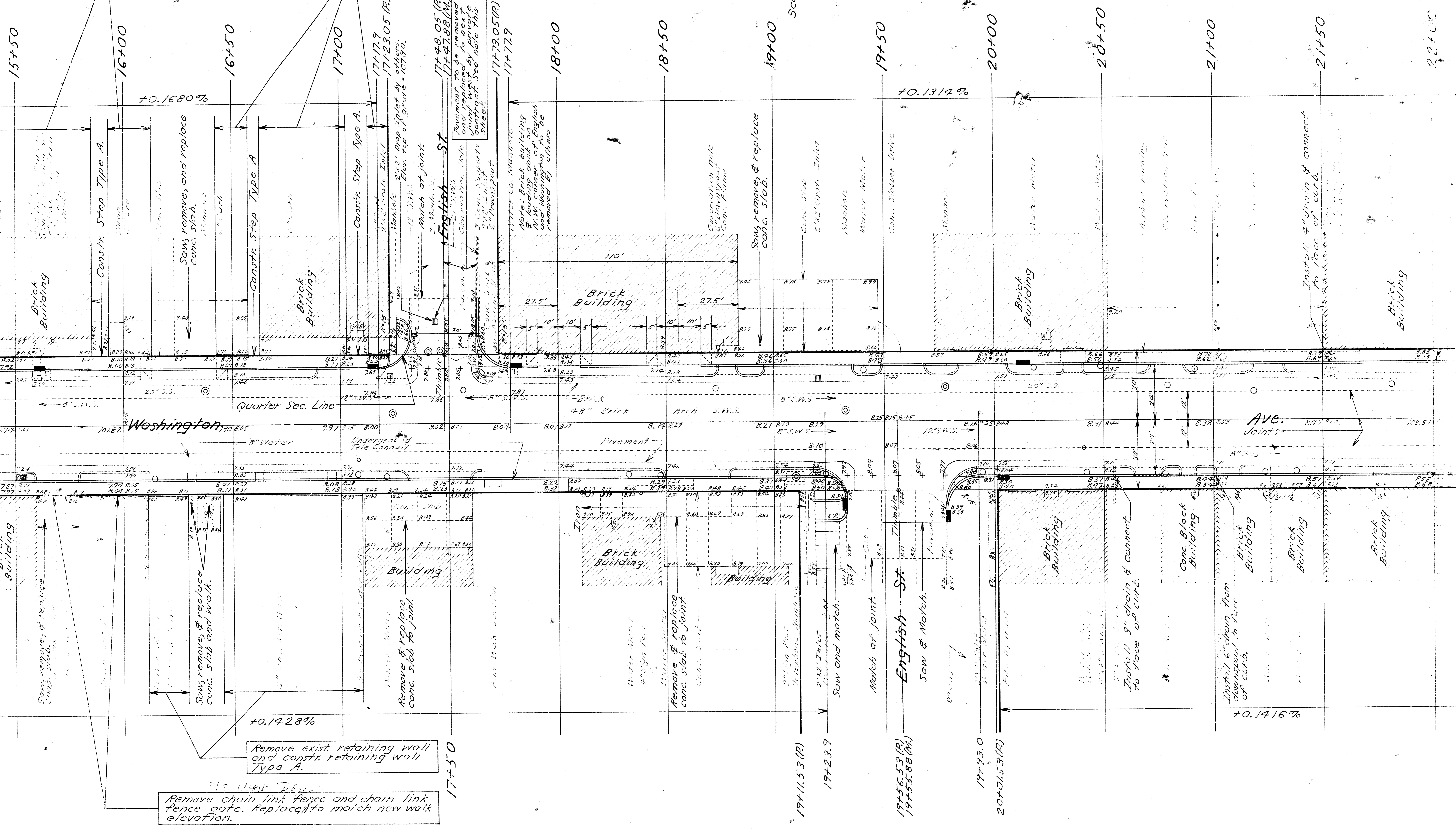
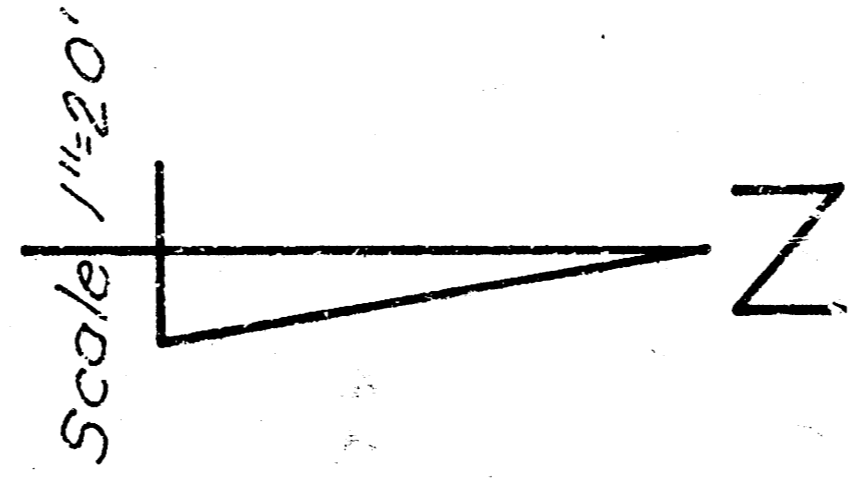
B.M. 107.96 "a" set on N.W. corner conc. base to traffic light pole on S.E. corner Washington and Waterman.

WASHINGTON AVENUE  
N.L. KELLOGG ST. TO S. L. DOUGLAS AVE.  
PROJ. NO. C 19-85

Remove exist. retaining wall and const. retaining wall Type B.

Remove exist. retaining wall along west line of Washington. Const. retaining wall Type B along west line of Washington and west approx. 8 Ft. along south line of English.

Note: The north half of English St. pavement is to be removed and replaced by others between the first and second joints west of the west line of Washington. Paving contractor may contact Mr. Lindel of the Wichita Eagle and Beacon to complete negotiations for this work by private contract.

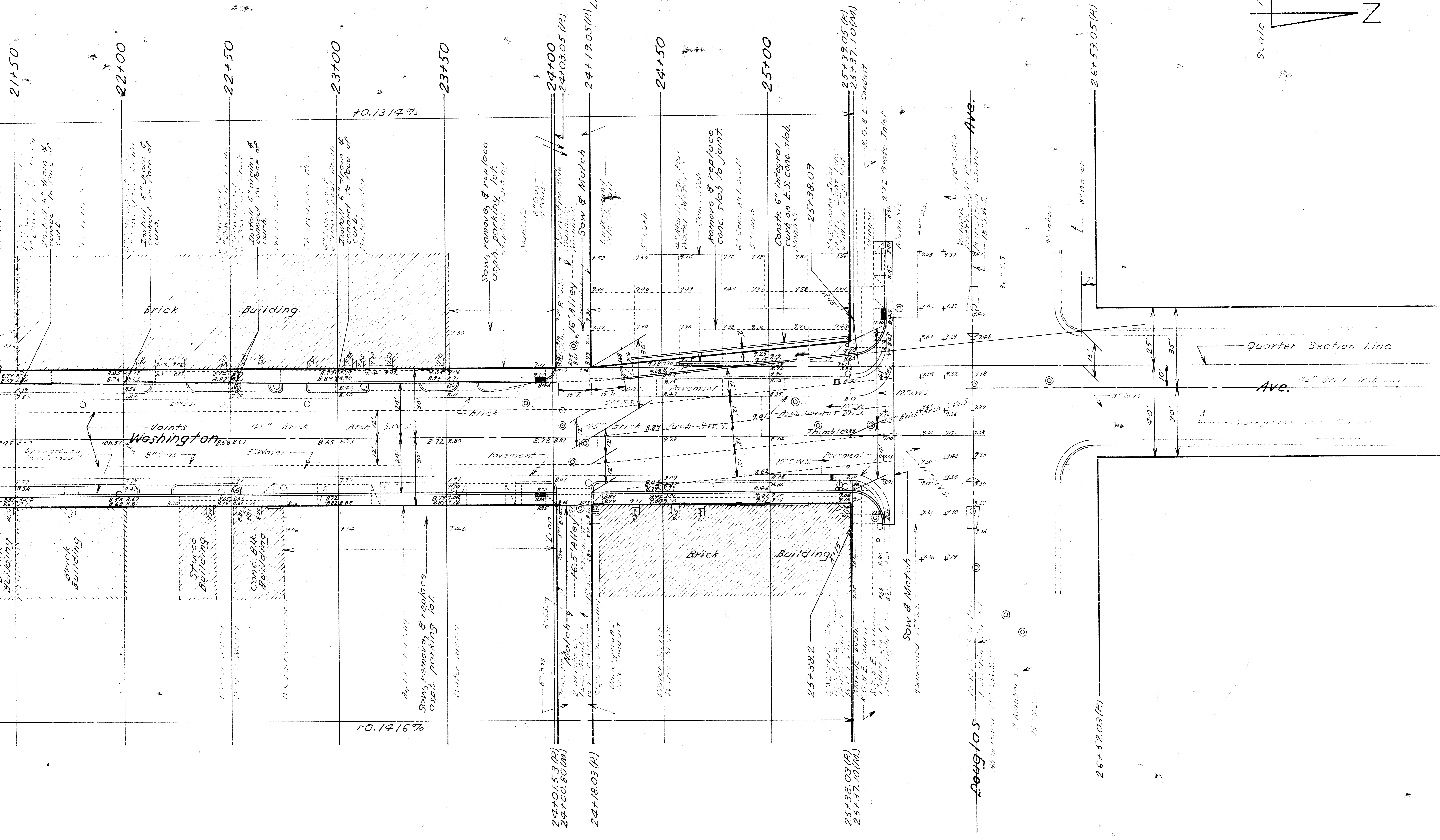
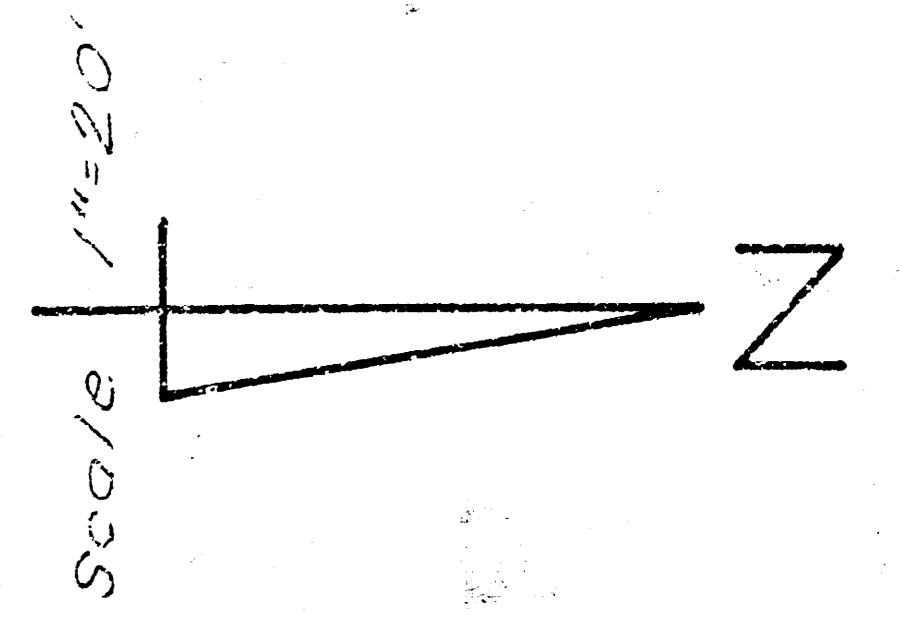


B.M. 108.71 South rim of 4" metal post approx. 2" high on S.E. corner of Washington and English.

WASHINGTON AVENUE  
N.L. KELLOGG ST. TO S.L. DOUGLAS AVE.  
PROJ. NO. C 19-85

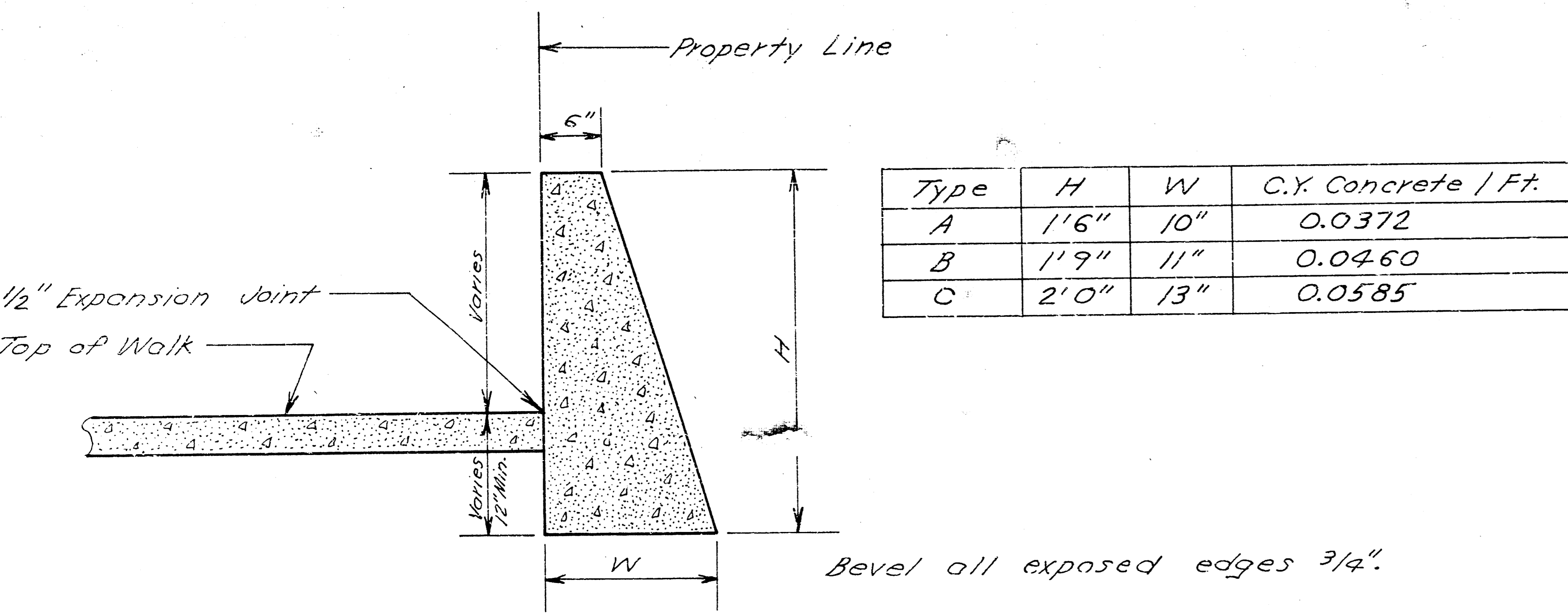
5/10

B.M. 111.75 "x" cut on N.W. corner pedestrian island on centerline of Douglas at E.L. Washington.



WASHINGTON AVENUE  
N. L. KELLOGG ST. TO S. L. DOUGLAS AVE.  
PROJ. NO. C 19-85

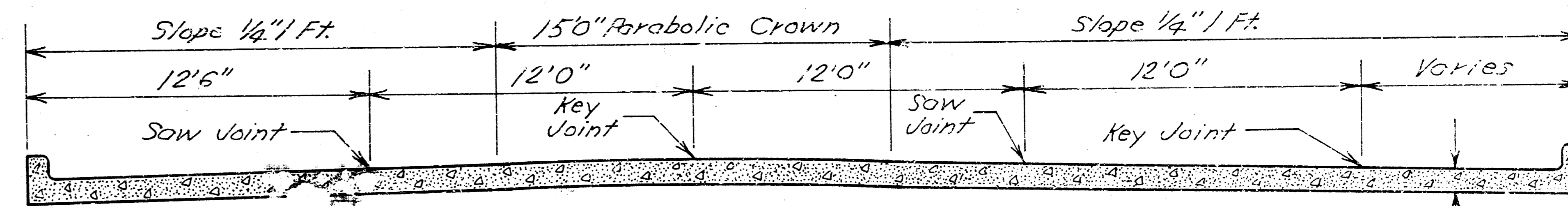




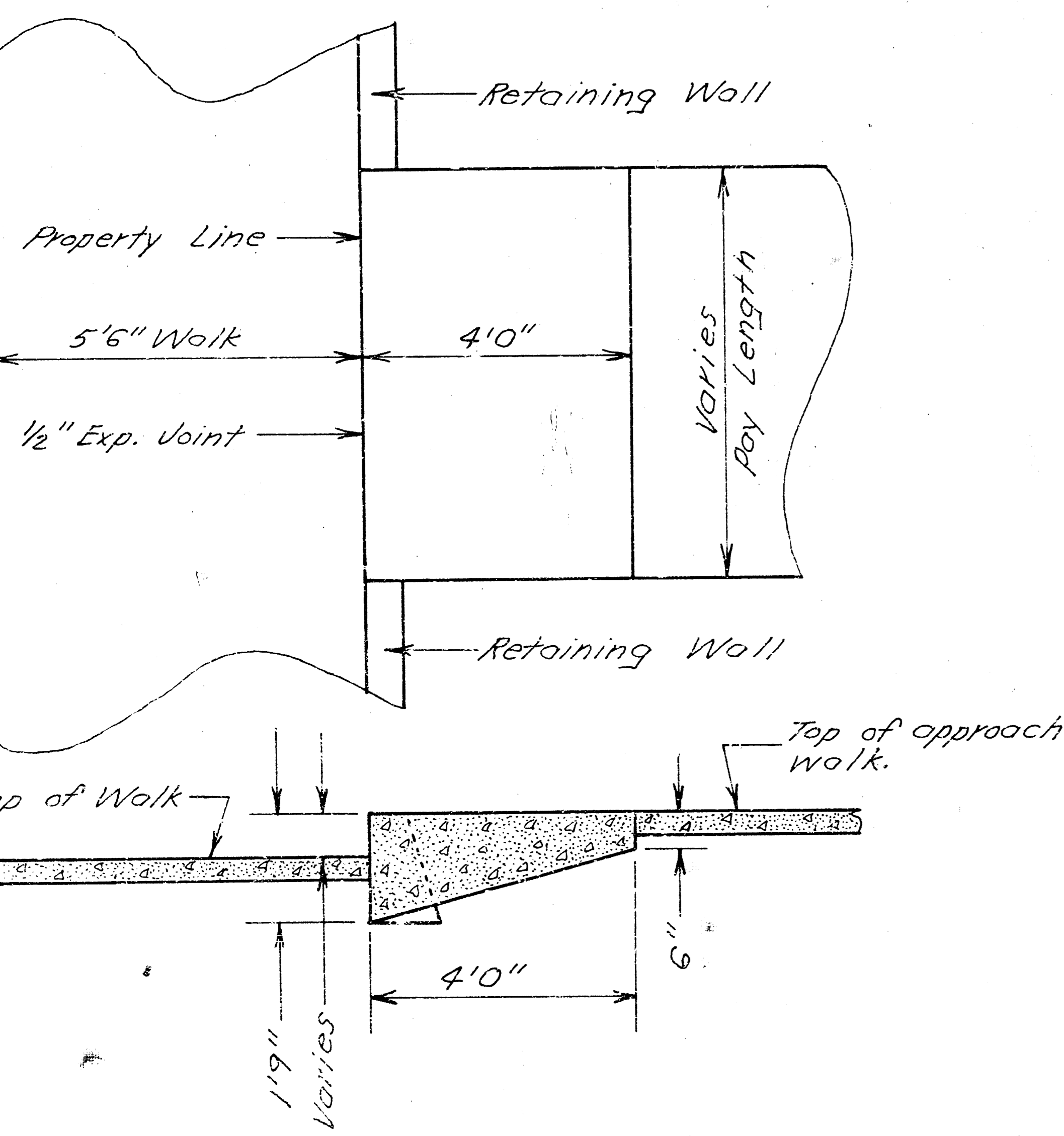
Type	H	W	C.Y. Concrete / Ft.
A	1'6"	10"	0.0372
B	1'9"	11"	0.0460
C	2'0"	13"	0.0585

Retaining Wall Detail  
No Scale

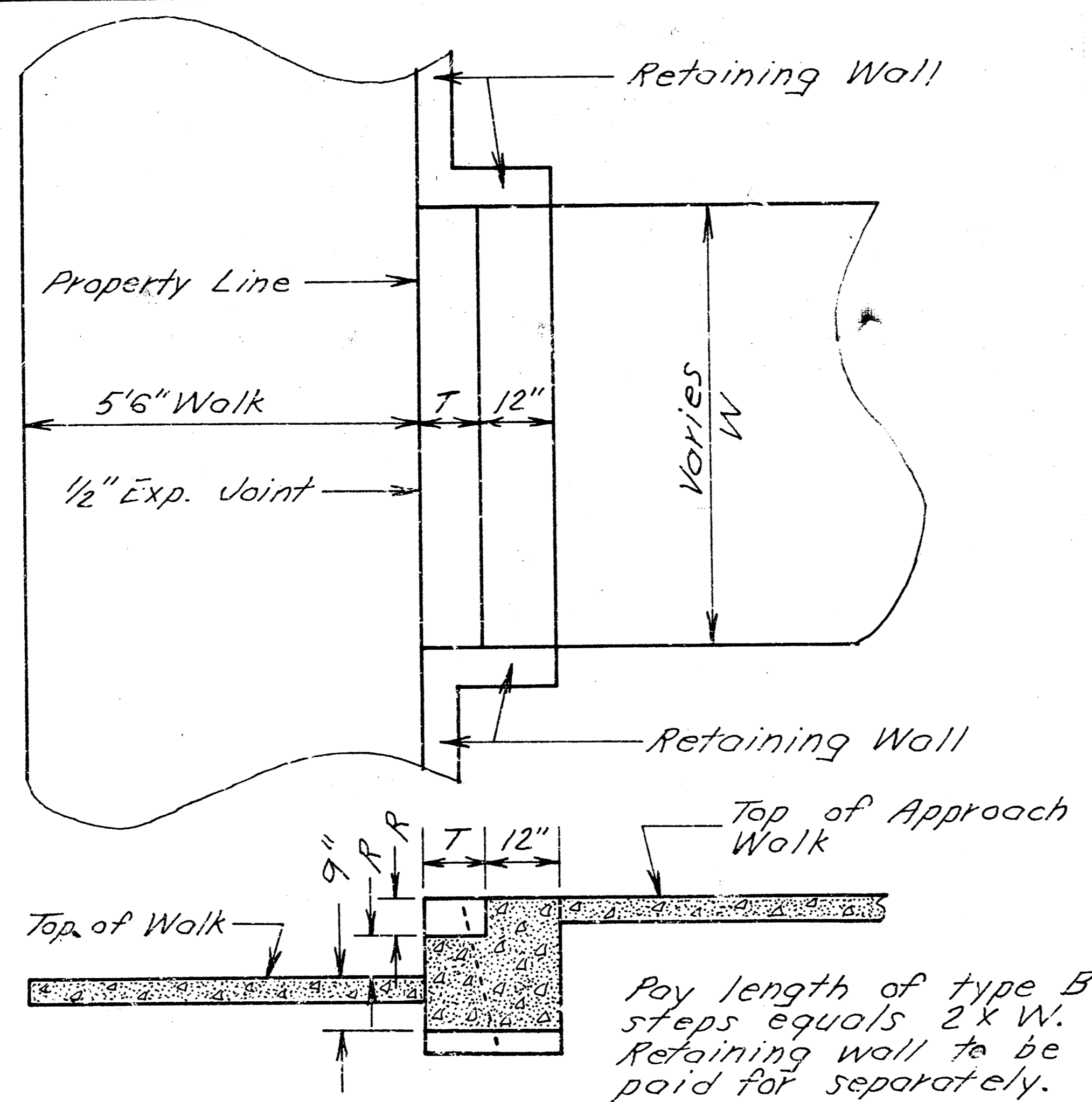
Note: Taper ends of retaining wall from full height to top of walk elevation at locations where retaining walls are constructed adjacent to drives, except where the drives have curbs or retaining walls along the sides. Entire length of tapered section to be included in pay length of retaining wall.



Typical Section  
Sta. 1+03.3 to 3+94.5 &  
Sta. 24+19.05 to 25+38.03  
No Scale



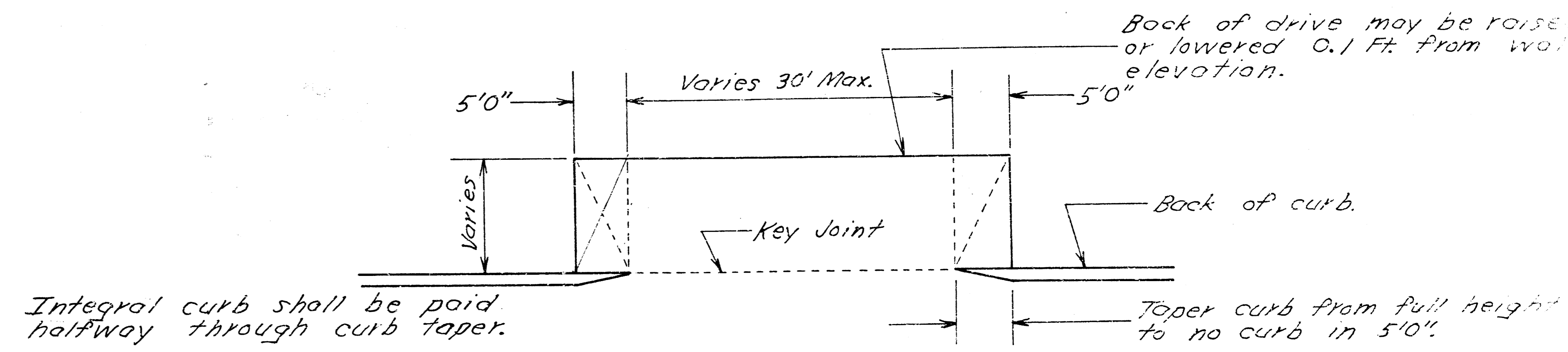
Step Detail  
Type A  
No Scale



Step Detail  
Type B  
No Scale

R	T
4"	19"
4 1/4"	17 3/8"
4 1/2"	16 5/8"
4 3/4"	15 3/4"
5"	15"
5 1/4"	14 3/8"
5 1/2"	13 3/4"
5 3/4"	13 1/8"
6"	12 3/8"
6 1/4"	12 1/8"
6 1/2"	11 5/8"
6 3/4"	11 1/4"
7"	10 3/4"
7 1/4"	10 3/8"
7 1/2"	10"
7 3/4"	9 5/8"
8"	9 1/4"

General Notes  
Field engineer to take ties to all irons. All irons are to be replaced. Field engineer to take new original cross-sections after all pavement and sidewalk has been removed from right-of-way. Contractor to grade and level remaining dirt after removal of pavement and sidewalk to facilitate the taking of cross-sections. Subgrade for walk adjacent to pavement to be compacted to some density requirements as the subgrade for pavement. Incidental drainage contractor is to leave all excess dirt under the sidewalk. All lines of removal that do not end at a joint shall be sawed. All material removed from this project will be delivered to locations as directed by the City Engineer. Contractor to furnish any fittings required to connect drains from face of curb to downspouts and this work shall be considered as incidental to the project. Sidewalk is to be constructed by paving contractor. All pavement to be 8" conc. pavement unless noted otherwise. The leveling and grading of the remaining dirt after removal of pavement and walk will not be paid for separately and is to be considered incidental to the project. Conc. parking lots removed shall be paid for as walk & drive removed. Conc. parking lots replaced shall be paid for as 6" drive. Asph. parking lots replaced shall be paid for as tens of asphalt.



Ramp Drive Detail