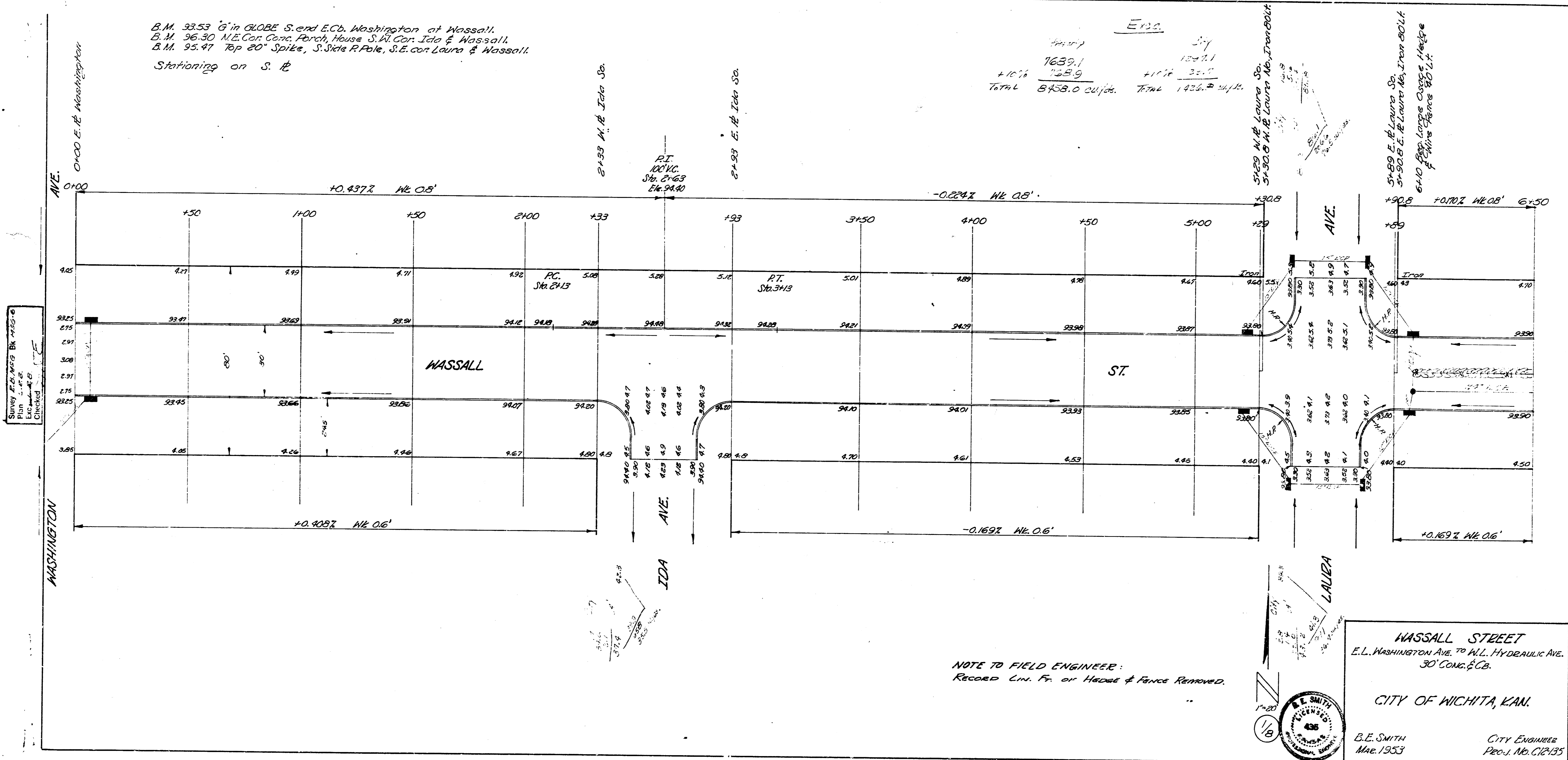


B.M. 93.53 'G' in GLOBE S. end E.Cb. Washington at Wassall.
 B.M. 96.30 N.E. Cor. Cora. Fench. House S.W. Cor. Ida & Wassall.
 B.M. 95.97 Top 20" Spike, S. Side R. Pole, S.E. cor. Laura & Wassall.
 Stationing on S. E.

ERD
 7639.1
 125.9
 +10%
 TOTAL 8758.0 cu. yds. Total 1436.2 cu. yds.

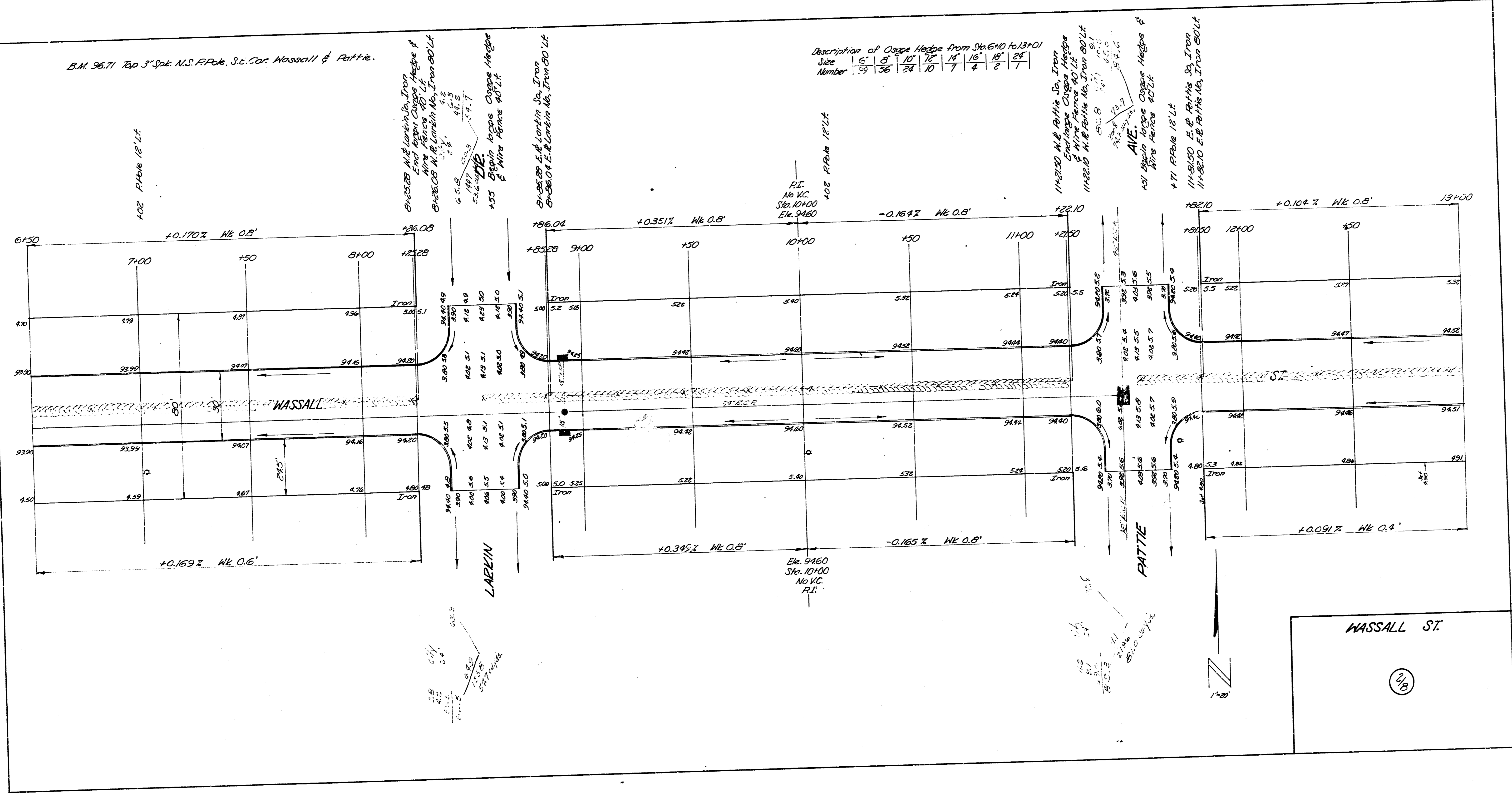


WASSALL STREET
 E.L. WASHINGTON AVE. TO W.L. HYDRAULIC AVE.
 30' CONC. & C.B.
 CITY OF WICHITA, KAN.
 B.E. SMITH
 Mar. 1953
 CITY ENGINEER
 PROJ. NO. C12/35

B.M. 96.71 Top 3" Spk. N.S. P.P. Co., S.E. Cor. Wassall & Pattie.

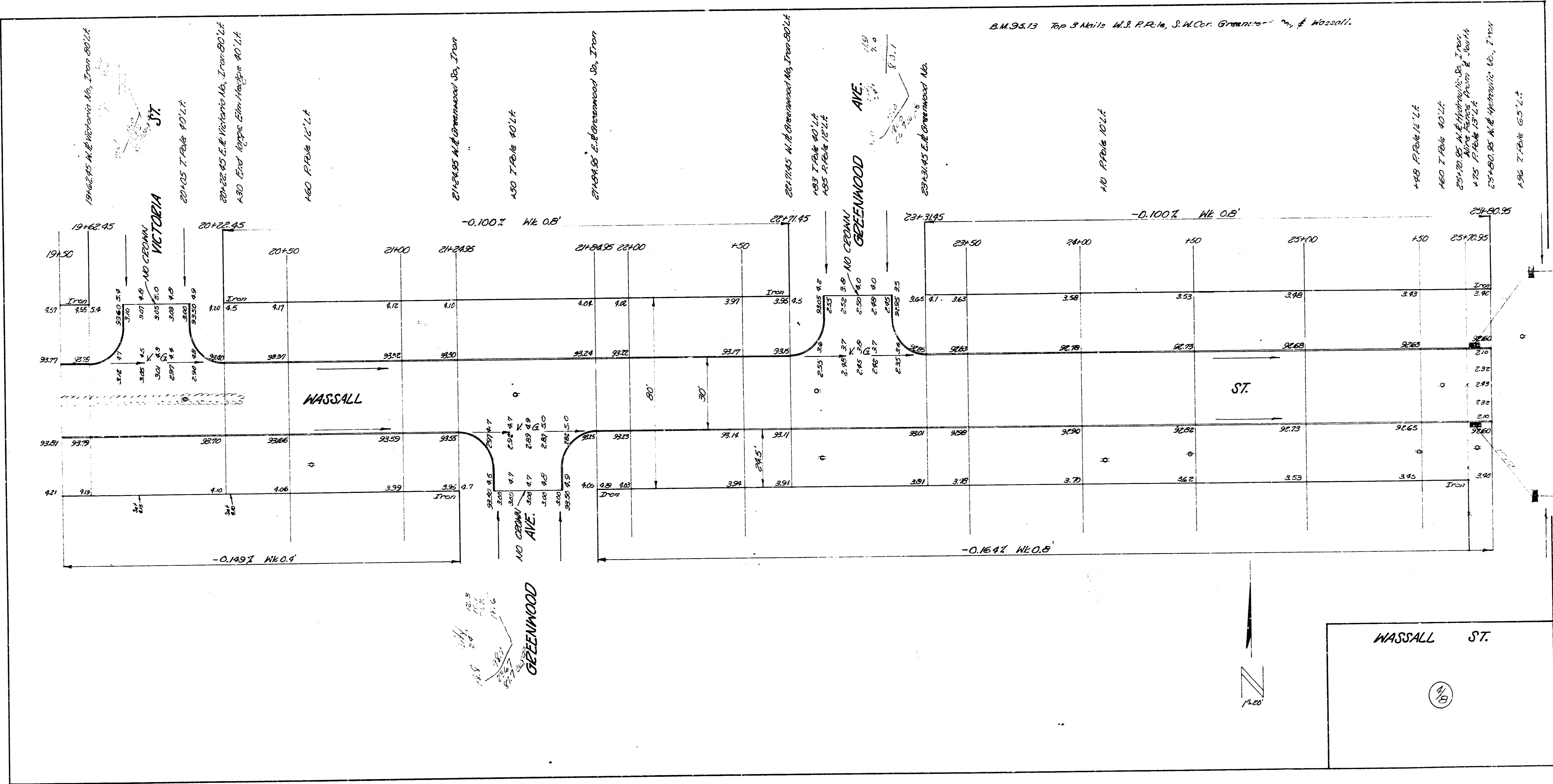
Description of Curve Hedge from Sta 6+00 to 13+00

Curve Number	6'	8'	10'	12'	14'	16'	18'	24'
1	24	36	24	10	7	4	2	7

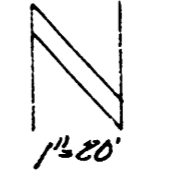
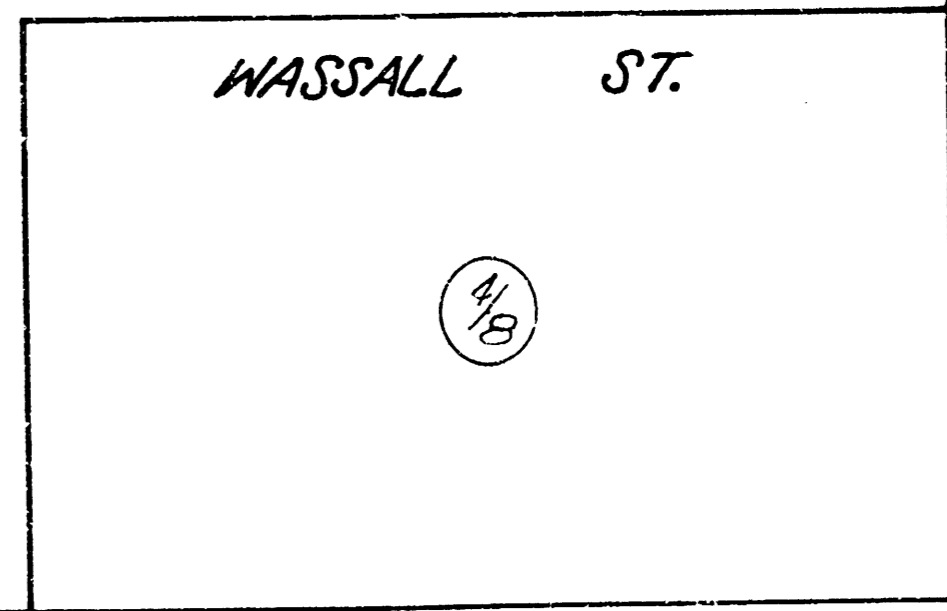


WASSALL ST.

(1/8)



B.M. 95.13 Top 3 Abutts W.R. R.R. in S.W. Cor. Greenwood St. & Wassall St.



1"=20'