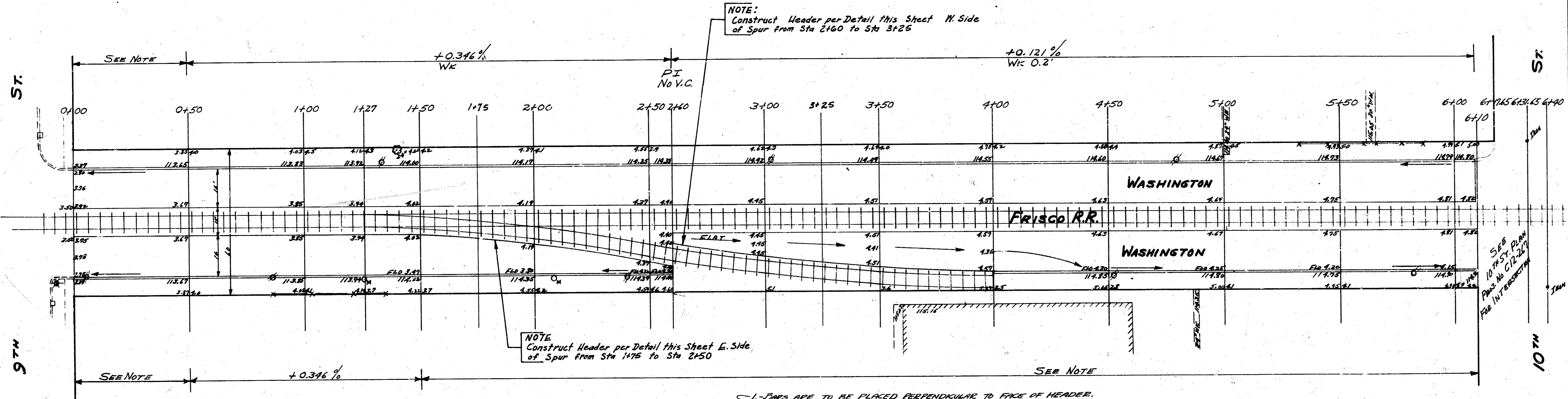
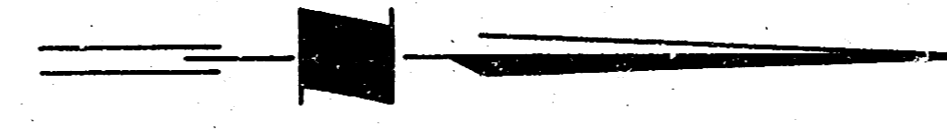


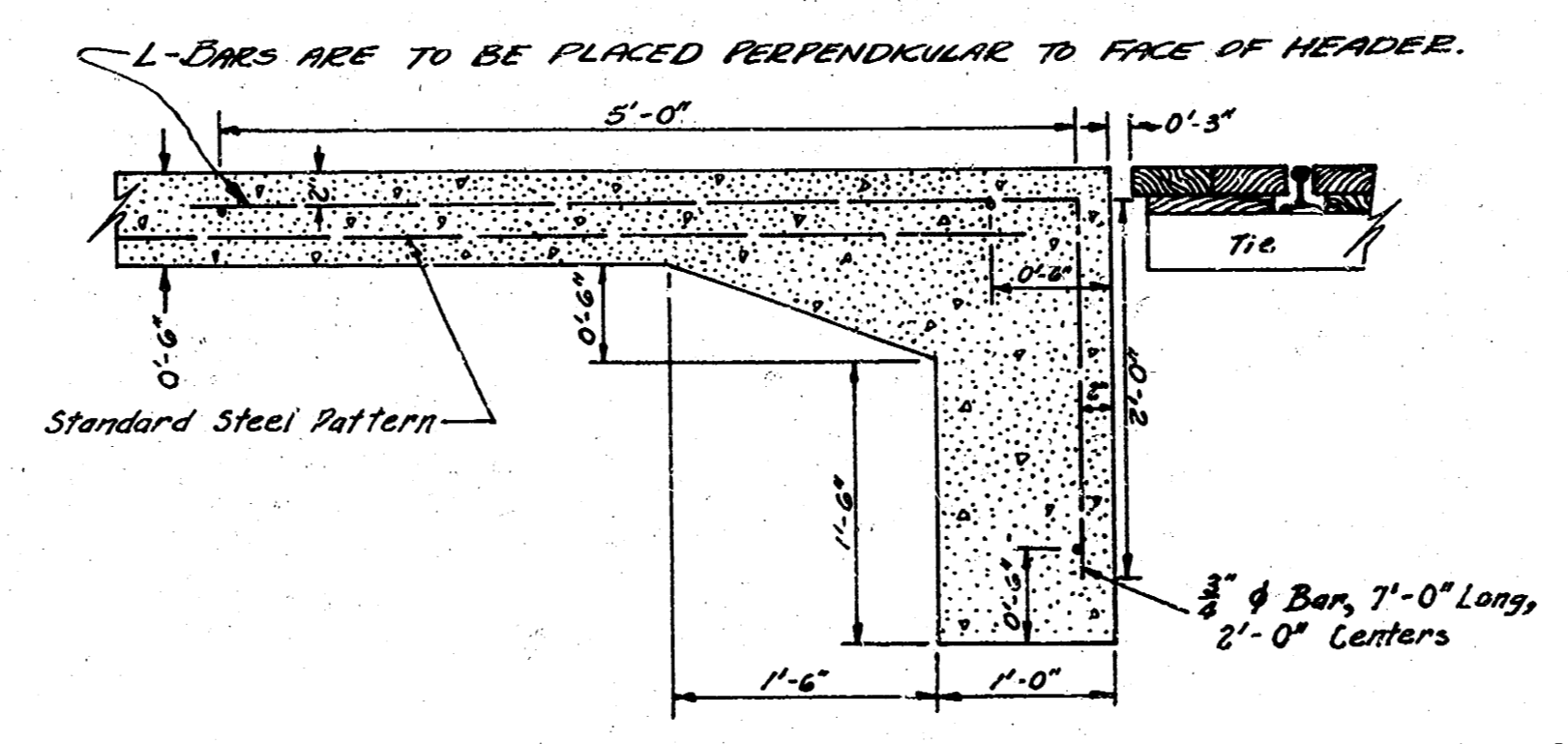
B.M. 112.88 STD. S.E. COR. WASHINGTON & 9TH
 B.M. 113.47 S.W. COR. LOWER CONC. STEP 146/100A E 10TH
 B.M. 113.84 "W" IN WALT KEELER WK EAST N.S. 3TH E.L. WASHINGTON
 CHAINING NORTH ON E



NOTE:
 Construct Header per Detail This Sheet W. Side
 of Spur from Sta 2+60 to Sta 3+25

NOTE:
 Construct Header per Detail This Sheet E. Side
 of Spur from Sta 1+75 to Sta 2+50

NOTE:
 FROM STA 0+00 TO 0+50 B.S. IS WARPED SECT. USE GRADES AS SHOWN.
 FROM STA. 1+50 TO 6+10 E.S. IS WARPED SECT. USE GRADES AS SHOWN



HEADER DETAIL & L-BAR PLACEMENT
 EAST SIDE OF SPUR FROM STA 1+75 TO STA 2+50
 AND
 WEST SIDE OF SPUR FROM STA 2+60 TO STA 3+25
 Scale 1"=1'-0"

PROPERTY
 CITY
 101 1/2 S.W. 2ND ST.
 WICHITA, KAN.
 101 1/2 S.W. 2ND ST.
 WICHITA, KAN.

WASHINGTON
 N.L. 9TH TO S.L. 10TH
 16' CONC & CB EACH SIDE TRACKS
 CITY OF WICHITA KAN.
 B.E. SMITH CITY ENGINEER
 SEPT. 1954 PROJ. NO. C11-4

Checked
 Exec
 Drawn
 B.E. SMITH