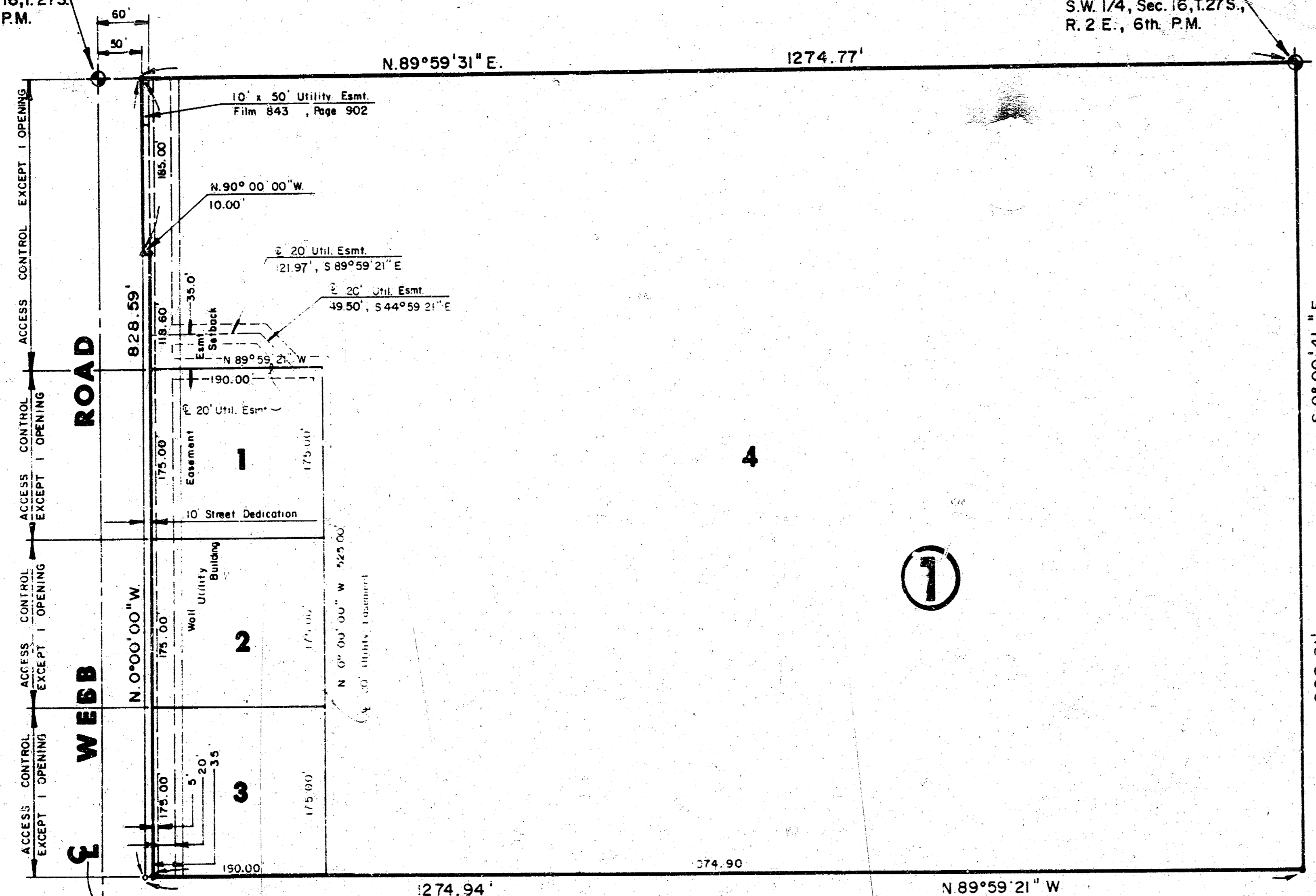


FINAL PLAT OF EAST SIDE DEVELOPMENT

AN ADDITION TO WICHITA, SEDGWICK COUNTY, KANSAS

N.W. Cor., N.W. 1/4,
S.W. 1/4, Sec. 16, T.27S,
R. 2 E., 6th. P.M.

N.E. Cor., N.W. 1/4,
S.W. 1/4, Sec. 16, T.27S,
R. 2 E., 6th. P.M.



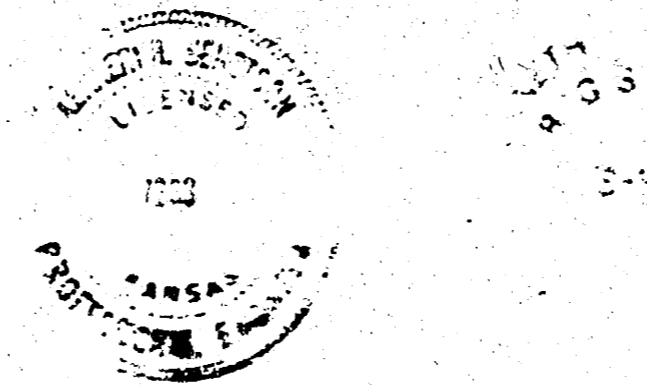
I, Kenneth H. Bengtson, a Civil Engineer and a Registered Land Surveyor in Kansas, do hereby certify that I have been in responsible charge of surveying and platting of "EAST SIDE DEVELOPMENT", an addition to Wichita, Sedgwick County, Kansas, into Lots, a Block and a Street the same being accurately set forth in the accompanying plat and described hereinafter:

A tract of land located in the Southwest Quarter of Section 16, Township 27 South, and Range 2 East of the 6th P.M., more particularly described as follows:

Beginning at a point lying 50.00 feet East of the Northwest Corner of said Southwest Quarter, thence East along the North line of said Southwest Quarter bearing N 89° 59' 31" E, 1274.77 feet; thence S 00° 00' 41" E, 829.01 feet; thence N 89° 59' 21" W, 1274.94 feet to a point 50.00 feet East of the West line of said Southwest Quarter; thence North parallel and 50.00 feet East of the West line of said Southwest Quarter bearing N 00° 00' 00" W, 528.59 feet to the point of beginning.

I hereby certify that the details of this plat are correct to the best of my knowledge and belief this 24 day of May, 1988.

Kenneth H. Bengtson
Kenneth H. Bengtson, P.E., P.L.S., #922
Mid-Kansas Engineering Consultants, P.A.
2500 N. Rock Road, Building #200
Wichita, KS 67225



Scale: 1" = 100'

This plat of "EAST SIDE DEVELOPMENT" has been submitted to and approved by the Wichita-Sedgwick County Metropolitan Area Planning Commission, Wichita, Kansas.

Dated this 31st day of Mar, 1988.

WICHITA-SEDGWICK COUNTY METROPOLITAN AREA PLANNING COMMISSION

Edon Parsons, Chairman

Marvin Skrut, Secretary
Marvin S. Krout



This plat approved and all dedications shown hereon, if any, accepted by the City Council of the City of Wichita, Kansas, this 7th day of June, 1988.

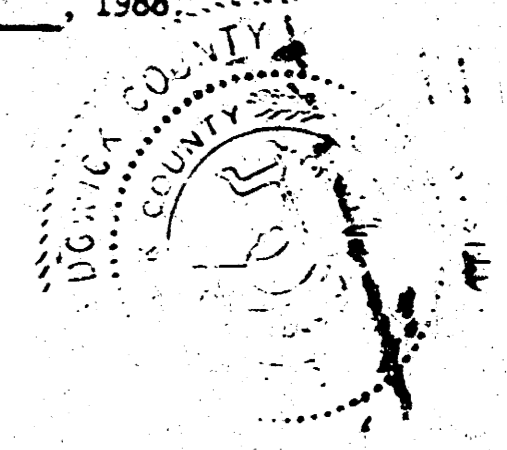
Jerodon Kamen, Mayor

Patricia, Deputy City Clerk



Entered on transfer record this 15th day of June, 1988.

Don Wright, County Clerk

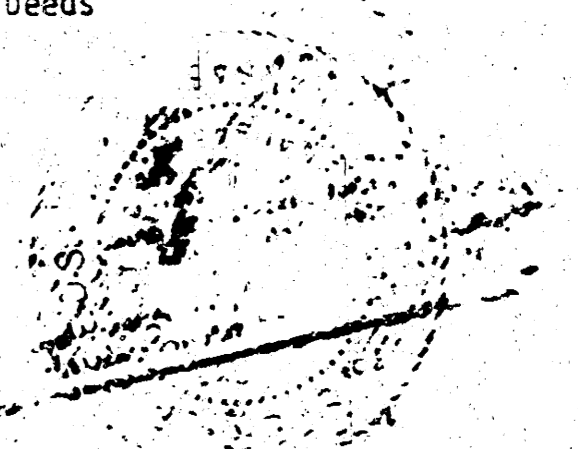


STATE OF KANSAS)
SEDGWICK COUNTY)

This is to certify that this instrument was filed for record in the Register of Deeds office this 15th day of JUNE, 1988, AT 3:30 P.M.

Pat Kettler, Register of Deeds

Ed Resa, Deputy



Know all men by these presents that we the undersigned property owners of the land as above set forth in the land plat and certificate, have caused the same to be surveyed and platted into lots, a block and a street the same to be known as "EAST SIDE DEVELOPMENT", an addition to Wichita, Sedgwick County, Kansas. The street is hereby dedicated to and for the use of the public. Easements for the construction and maintenance of public utilities, as indicated on the accompanying plat are hereby granted. The easement is dedicated for the construction and maintenance of a water, sewer and gas utility easement. All egress and ingress of access to or from Webb Road over and across the West line of EAST SIDE DEVELOPMENT, are hereby granted to the City of Wichita, provided however lots 1, 2, 3 and 4 shall have access to Webb Road at one location each. All access locations shall be determined by the City Engineer.

4238 ROAD DEVELOPMENT, INC.

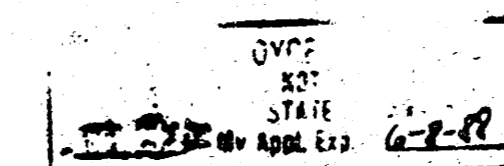
Johnny W. Stevens
Johnny W. Stevens, President

STATE OF KANSAS
SEDGWICK COUNTY

Recorded this 24 day of May, 1988.

Witness my hand and seal of office this 24th day of May, 1988, at the City of Wichita, Kansas.

Joyce L. Kaufman
Joyce L. Kaufman, Clerk



952802