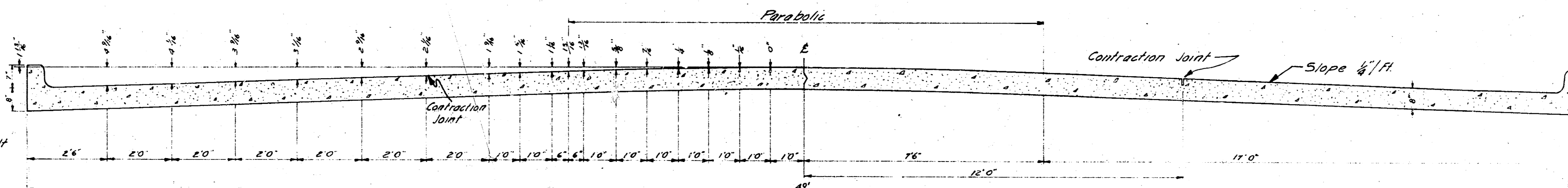
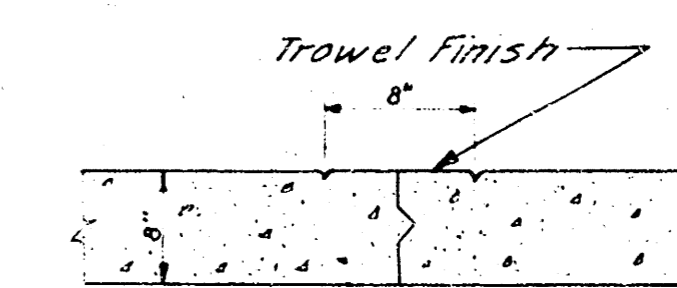


WEST STREET  
 N.L. CENTRAL - N.L. 13TH. STR.  
 PROJECT NO. C19-18

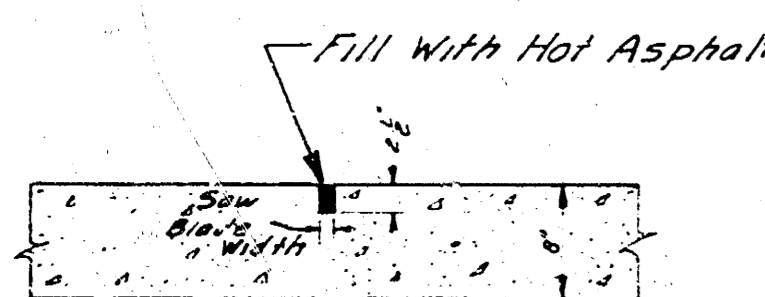


TYPICAL SECTION  
 No Scale



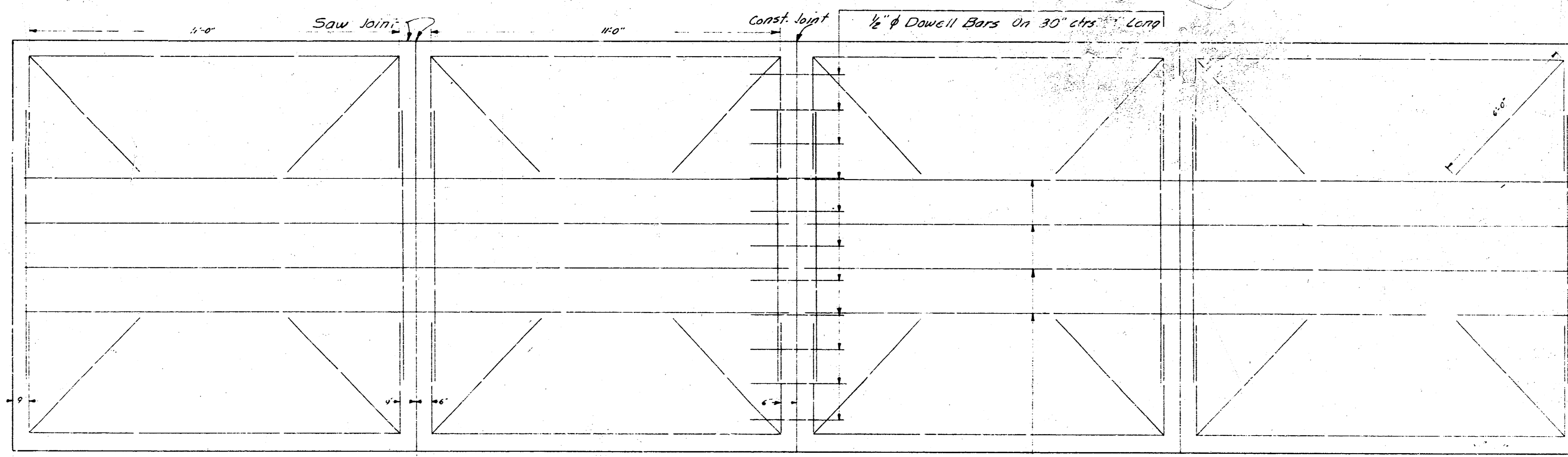
MARKER DETAIL  
 No Scale

Place Full Length of Job



CONTRACTION JOINT  
 No Scale

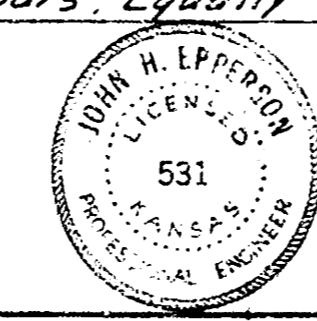
To Be Used At 30' Intervals  
 Except Where An Expansion  
 Joint Is Used



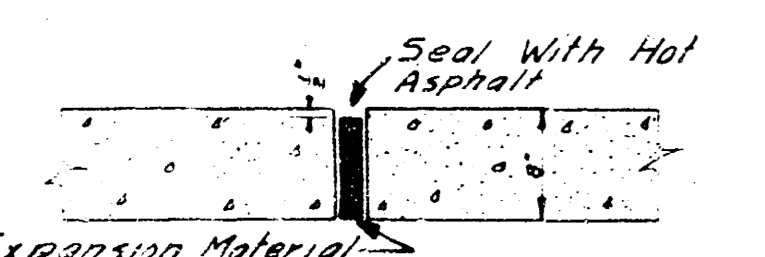
STEEL PATTERN  
 No Scale

Use  $\frac{3}{8}$ "  $\phi$  Bars Unless Otherwise Specified

4 -  $\frac{3}{4}$ "  $\phi$  Bars, Equally Spaced, 24'-0" Long



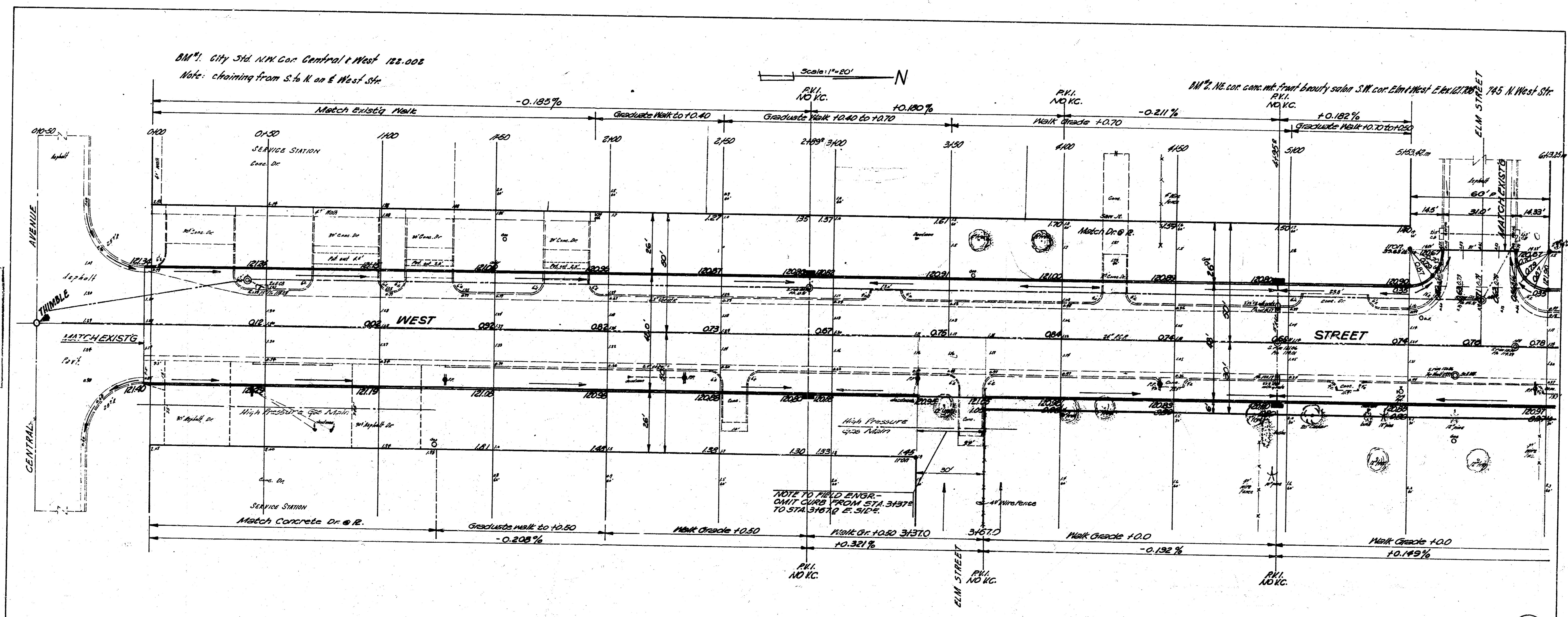
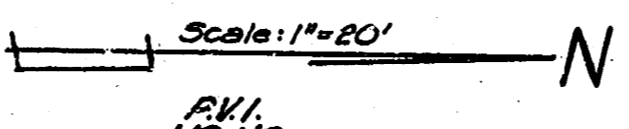
3/17



EXPANSION JOINT  
 No Scale

To Be Used At 120' Intervals

BM 1. City Std. N.W. Cor. Central & West 122.002  
 Note: chaining from S. to N. on E. West Str.



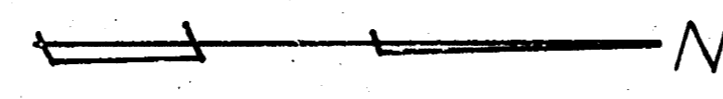
NOTE: WHEN CUTTING THROUGH HIGH PARKINGS, FIELD ENGINEER TO CONTACT PROPERTY OWNER FOR PERMISSION TO SLICE LAIRD TO NEW WALK GRADE. PROPER WRITTEN AUTHORIZATION IS TO BE OBTAINED.

NOTE: THE CONSTRUCTION OF 9th and 13th STREET INTERSECTIONS ARE TO BE COMPLETED AS SOON AS POSSIBLE AFTER BEGINNING OF PROJECT BY CONTRACTOR.

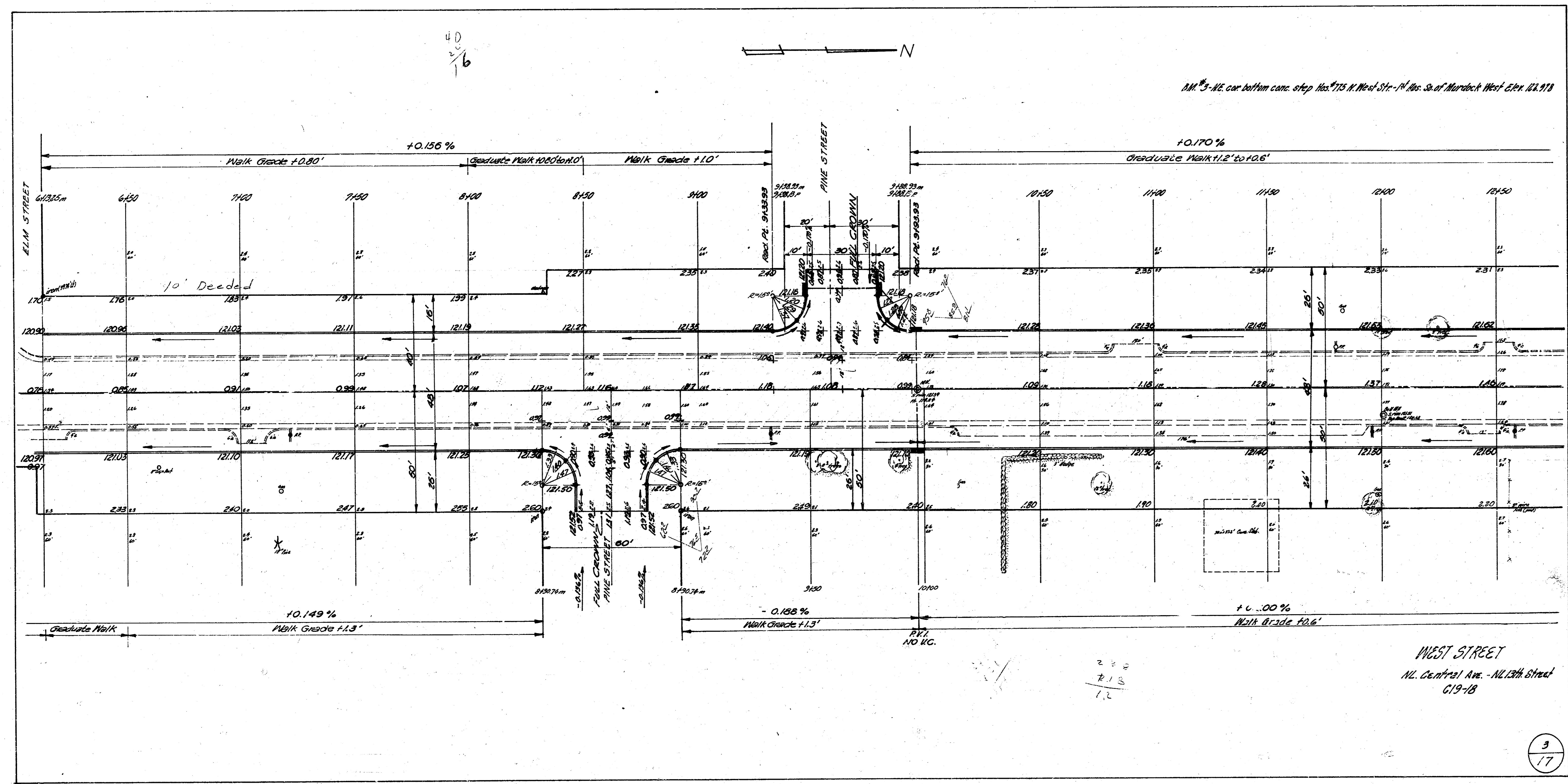
2  
17

**WEST STREET**  
 N. CENTRAL AVENUE TO N. 13TH STREET  
 IMPROVE AND REIMPROVE  
 48" - 8" CONCRETE & CURB  
 CITY OF WICHITA, KANSAS  
 B.E. SMITH CITY ENGINEER  
 DATE: July 1959 PROJECT NO. 619-18

40  
1/6



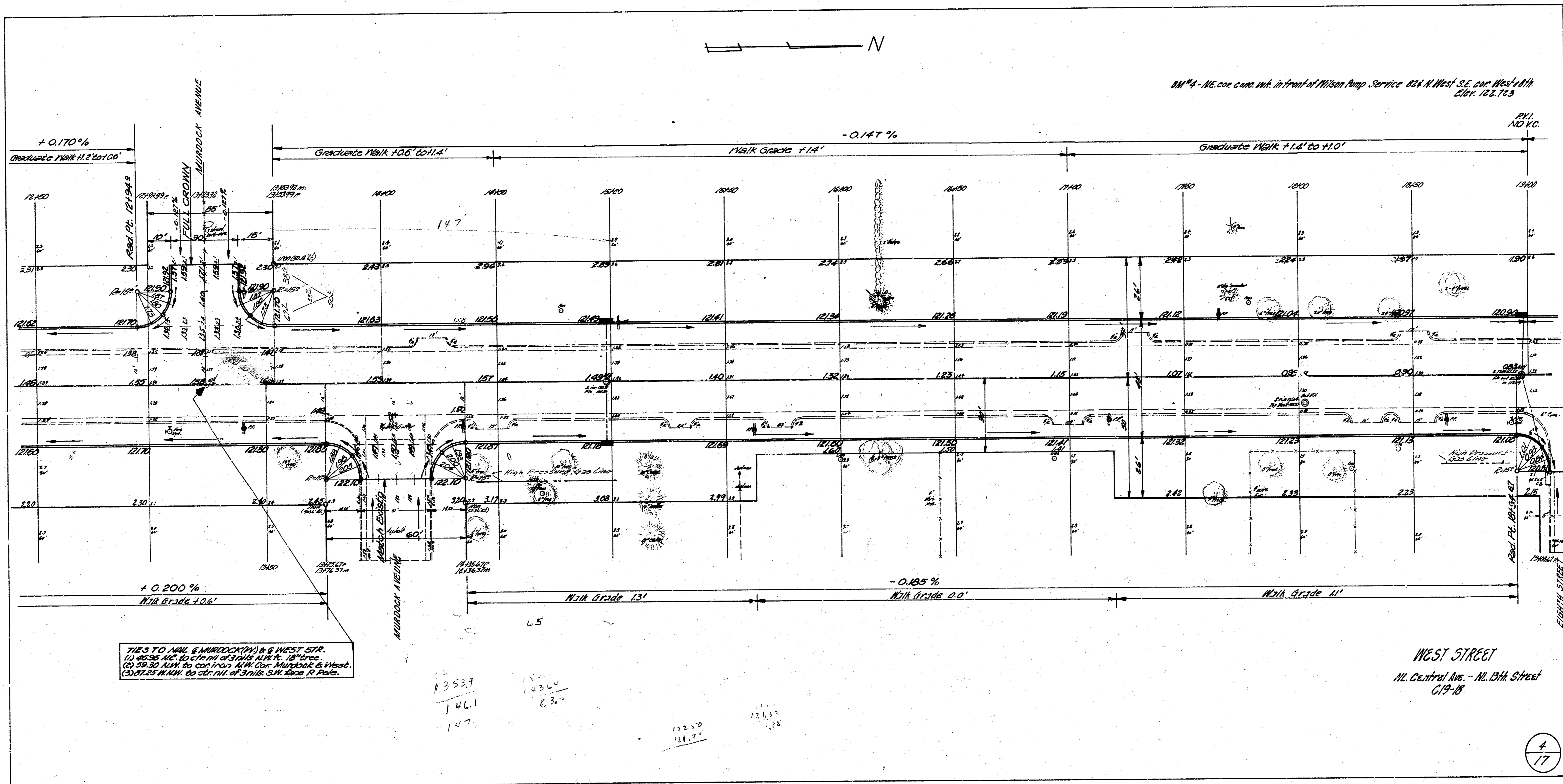
11.15' 3" 11.5' car bottom conc. slope 1/15' N. West St. - 1/4' S. of Murdoch West St. 11.11'



WEST STREET  
N. Central Ave. - N. 13th Street  
G19-18

2 3 2  
7 1 3  
1 2

3  
17



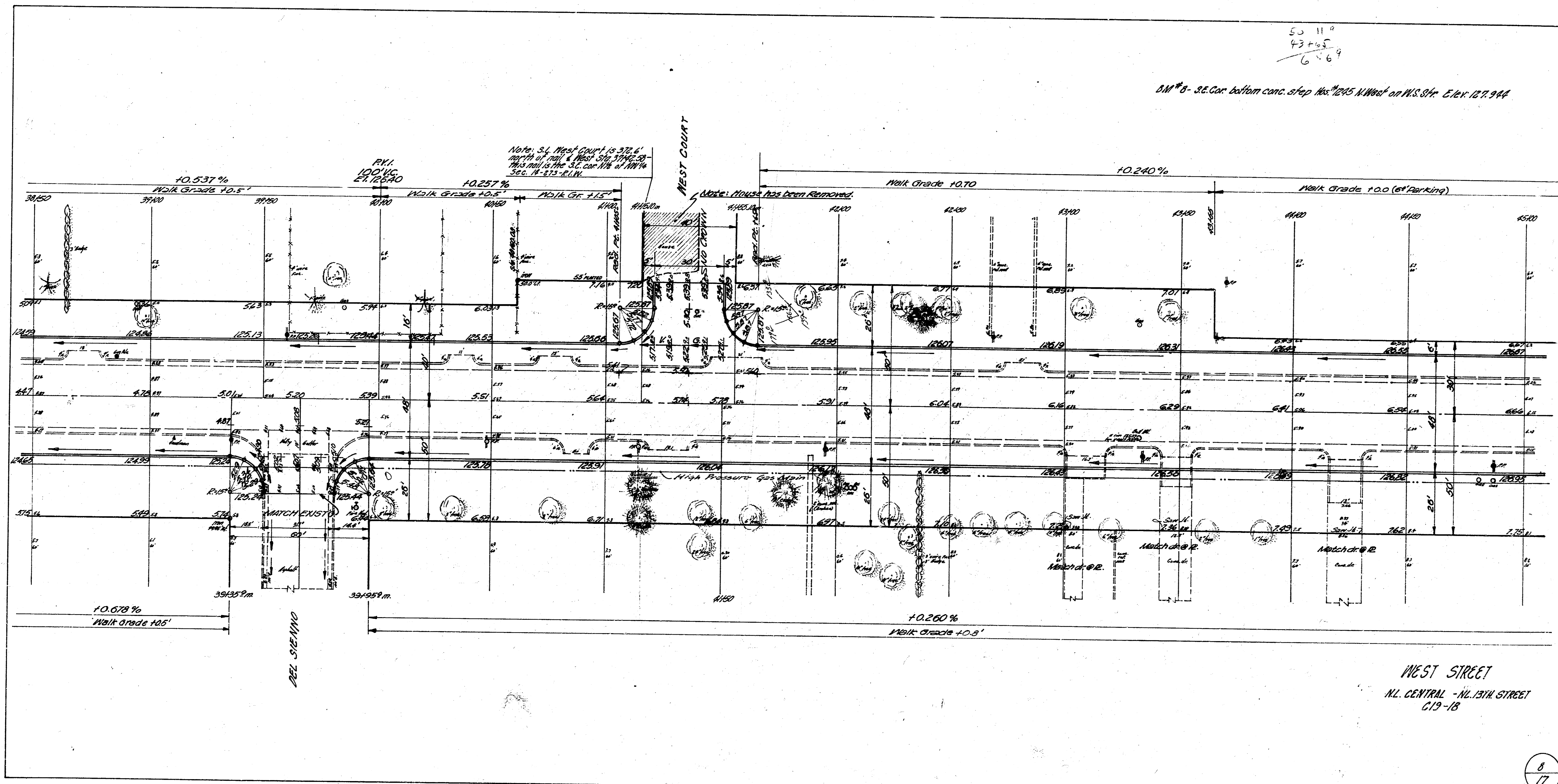




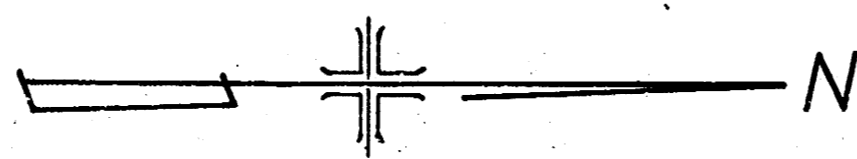


53 11 9  
43 14 5  
6 6 9

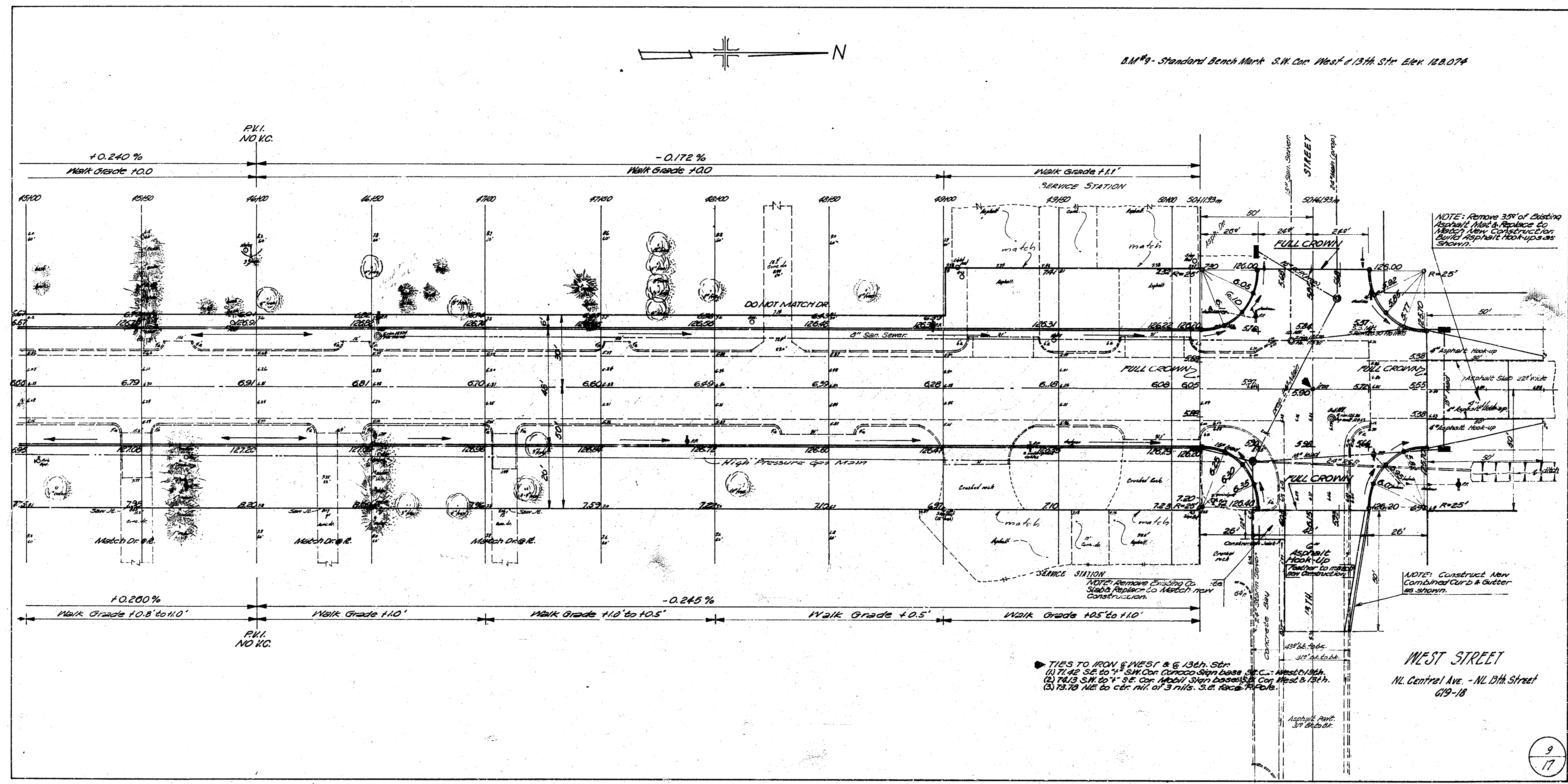
DM # 8 - S.E. Cor. bottom conc. step nos. 1245 N West on W.S. Str. Elev. 127.944



WEST STREET  
N. CENTRAL - N. 17TH STREET  
C19-18



B.M. 89 - Standard Bench Mark S.W. Cor. West of 13th St. Elev. 128.074



NOTE: Remove 30' of Existing Asphalt Pavement & Replace CC. Match New Construction. Bury Asphalt Hook-ups as Shown.

NOTE: Construct New Combined Curb & Gutter as Shown.

TIES TO IRON & WPC & 13th St.  
(1) 71.42 S2 to 1" S.W. Cor. Curved Sign Base S.E. C. West of 13th  
(2) 74.13 S.W. 24" S.E. Cor. Metal Sign Base S.E. C. West of 13th  
(3) 13.13 N.E. to cor. of 3 N.W. S.E. Road 74.13

WEST STREET  
N.E. Central Ave. - N.E. 13th Street  
619-18





