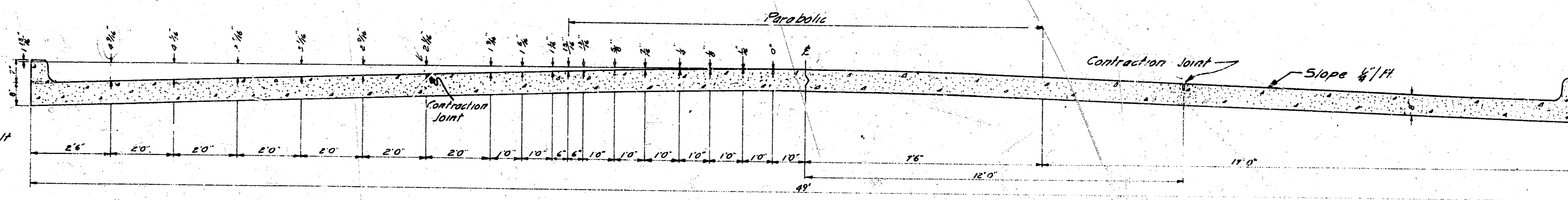
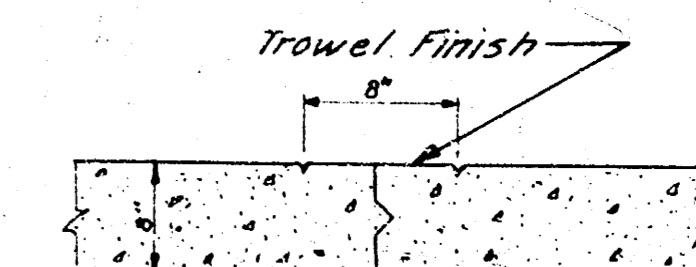


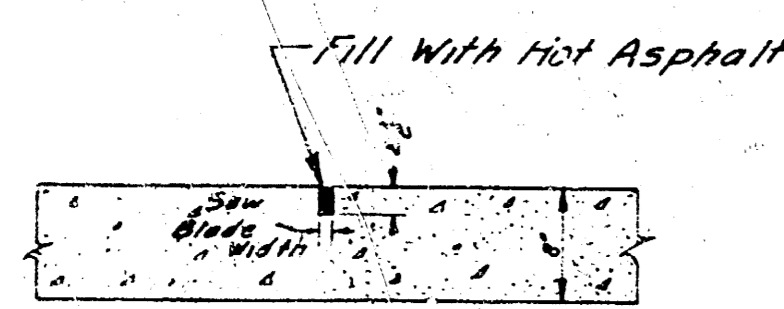
WEST ST.
N.L. US-54 TO S.L. DOUGLAS
PROJ. CI6-148



TYPICAL SECTION
No Scale

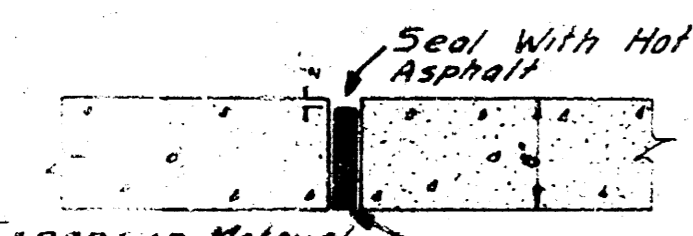


MARKER DETAIL
No Scale
Place Full Length of Job



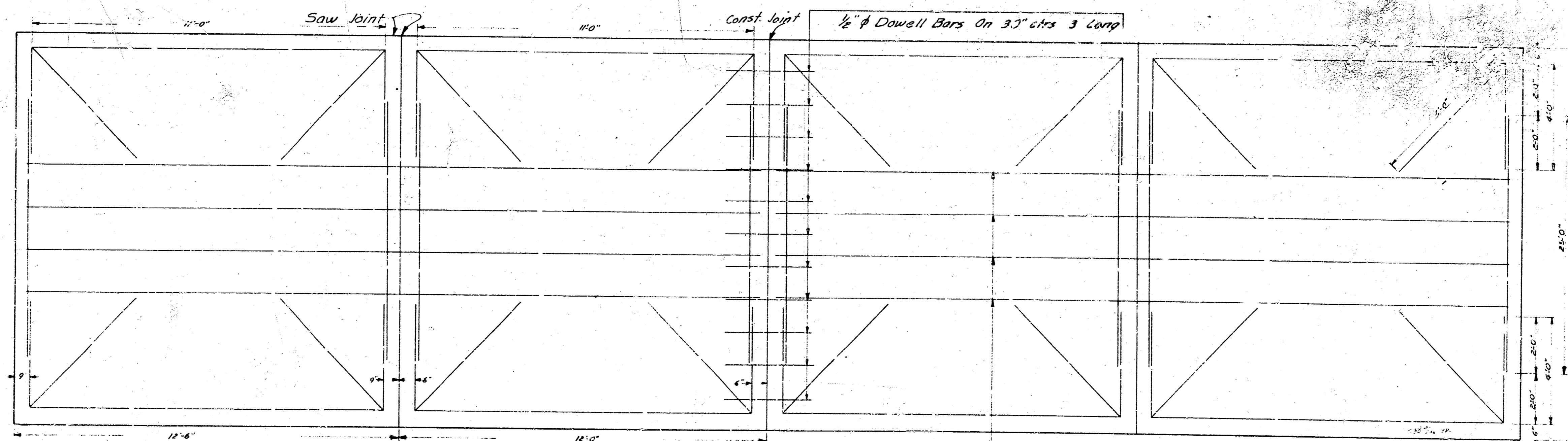
CONTRACTION JOINT
No Scale

To Be Used At 30' Intervals
Except Where An Expansion
Joint Is Used



EXPANSION JOINT
No Scale

To Be Used At 120' Intervals



STEEL PATTERN
No Scale

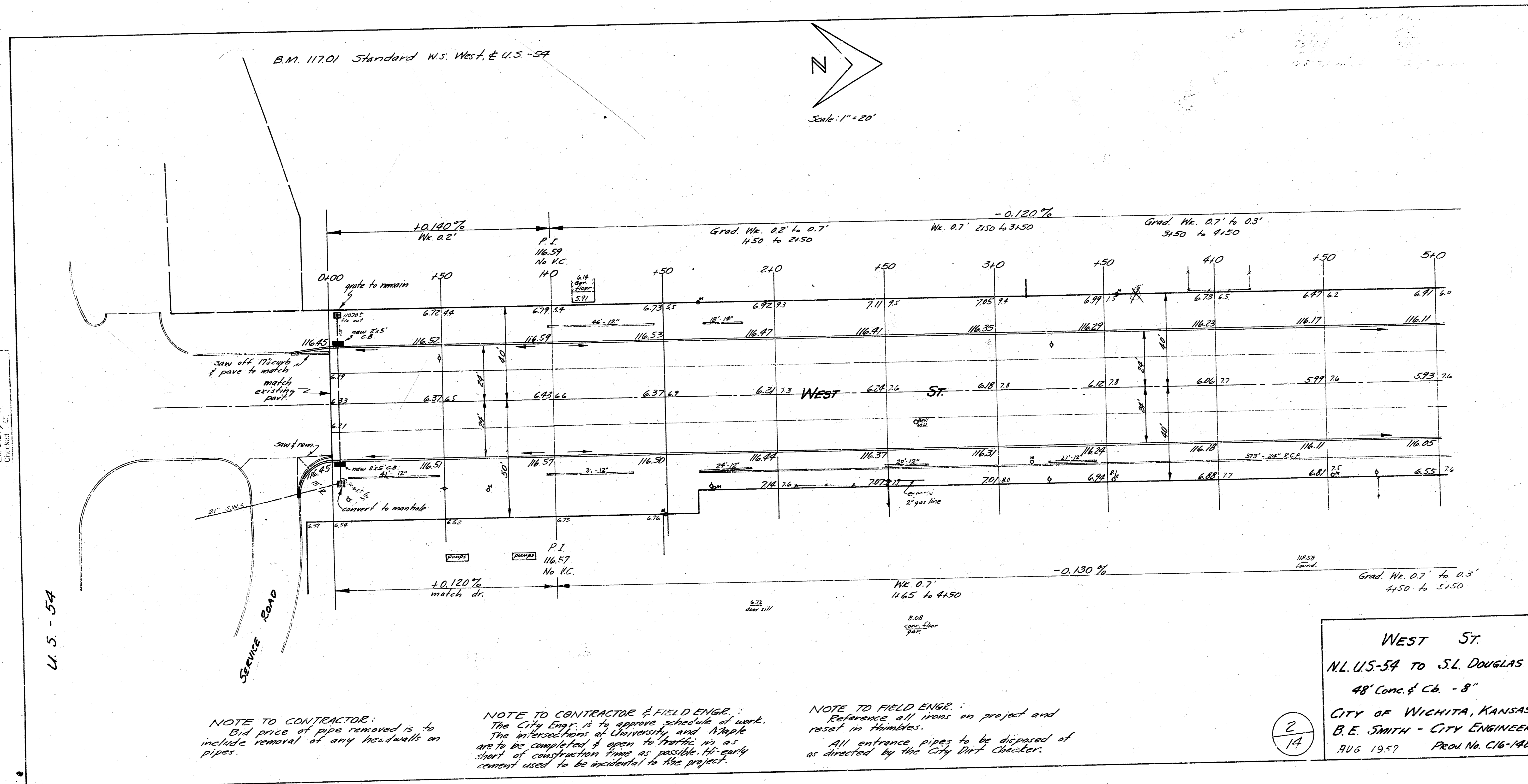
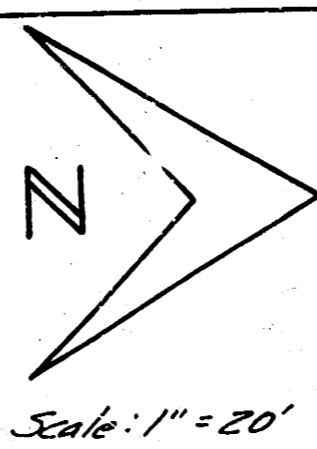
Use 3/4" ϕ Bars Unless Otherwise Specified

4 - 3/4" ϕ Bars, Equally Spaced, 24'-0" Long



1/14

B.M. 11701 Standard W.S. West, & U.S. - 54



NOTE TO CONTRACTOR:
 Bid price of pipe removed is to include removal of any headwalls on pipes.

NOTE TO CONTRACTOR & FIELD ENGR:
 The City Engr. is to approve schedule of work. The intersections at University and 11th St. are to be completed & open to traffic as early as possible. No early cement used to be incidental to the project.

NOTE TO FIELD ENGR:
 Reference all items on project and reset in Humbles.
 All entrance pipes to be disposed of as directed by the City Dirt Checker.

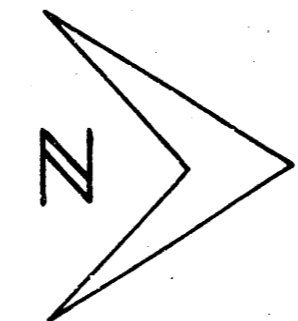
WEST ST.
 N.L. U.S. 54 TO S.L. DOUGLAS
 48' Conc. & Cb. - 8"
 CITY OF WICHITA, KANSAS
 B.E. SMITH - CITY ENGINEER
 AUG 1957 Proj. No. C16-148

2/14

U.S. - 54
 SERVICE ROAD
 81' SWL

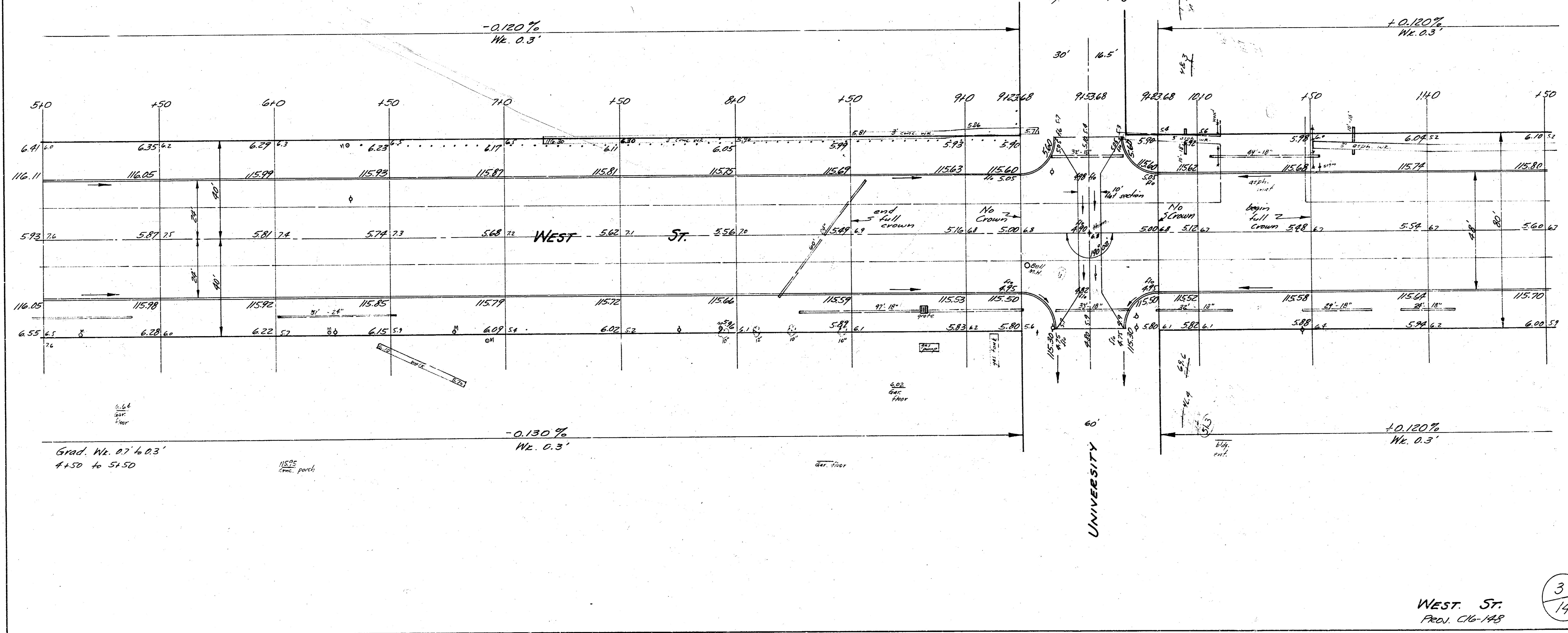
B.M. 117.01 Standard, N.S. West, E. U.S.-54

B.M. 116.76 Spike SW. Side H.L.P. N.E. University of Illinois

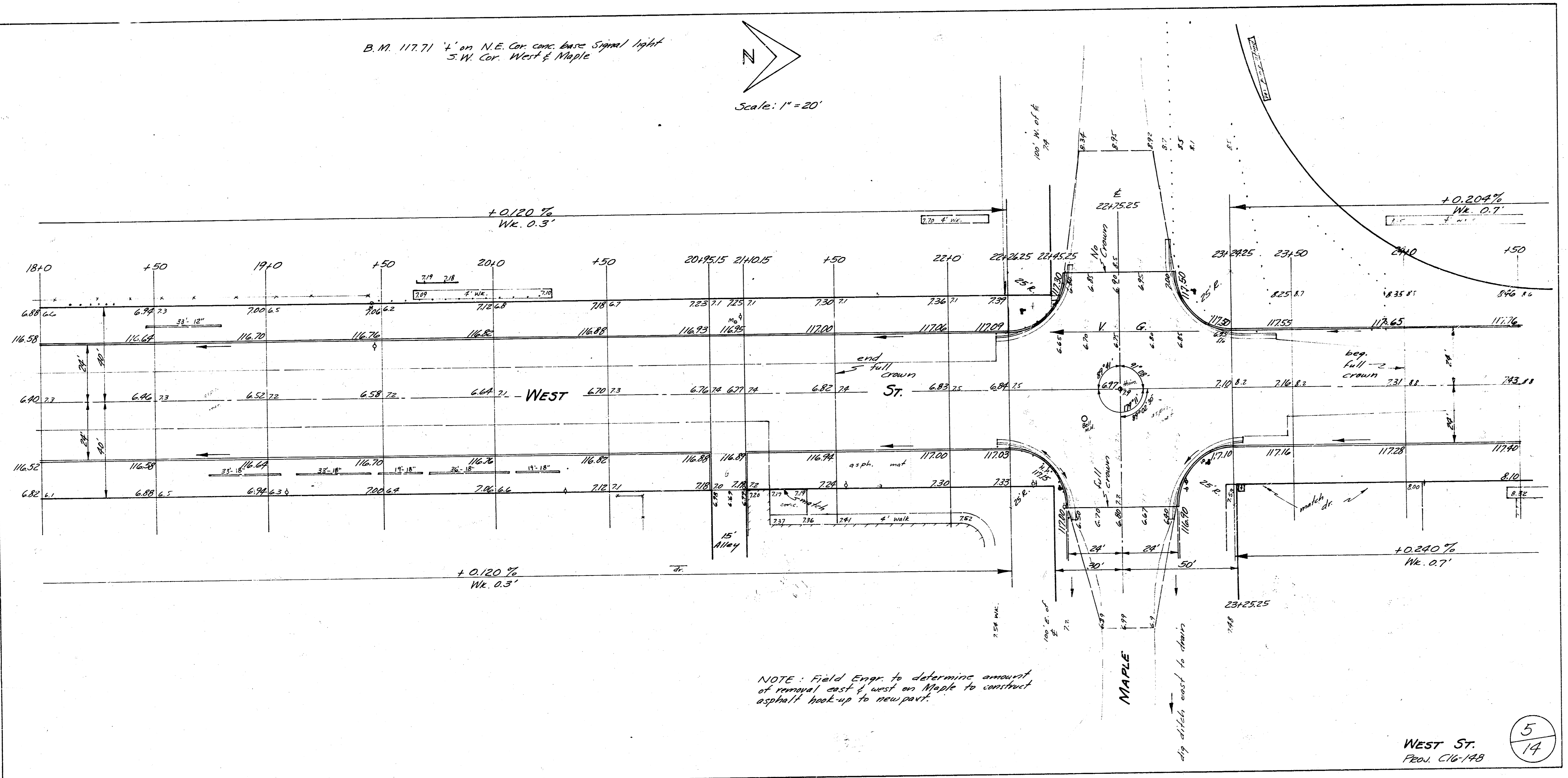
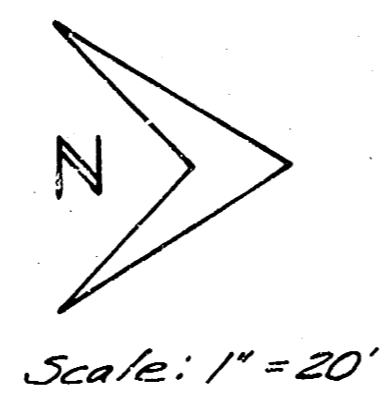


Scale: 1" = 20'

NOTE: This intersection to be paved with 5" concrete to be done with a later date on sanitary sewer project.



B.M. 117.71 4' on N.E. Cor. conc. base Signal light
S.W. Cor. West & Maple

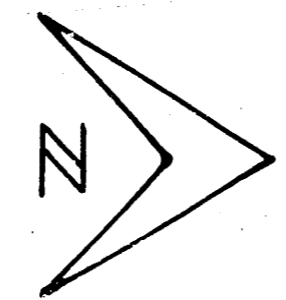


NOTE: Field Engr. to determine amount of removal east & west on Maple to construct asphalt heat-up to new part.

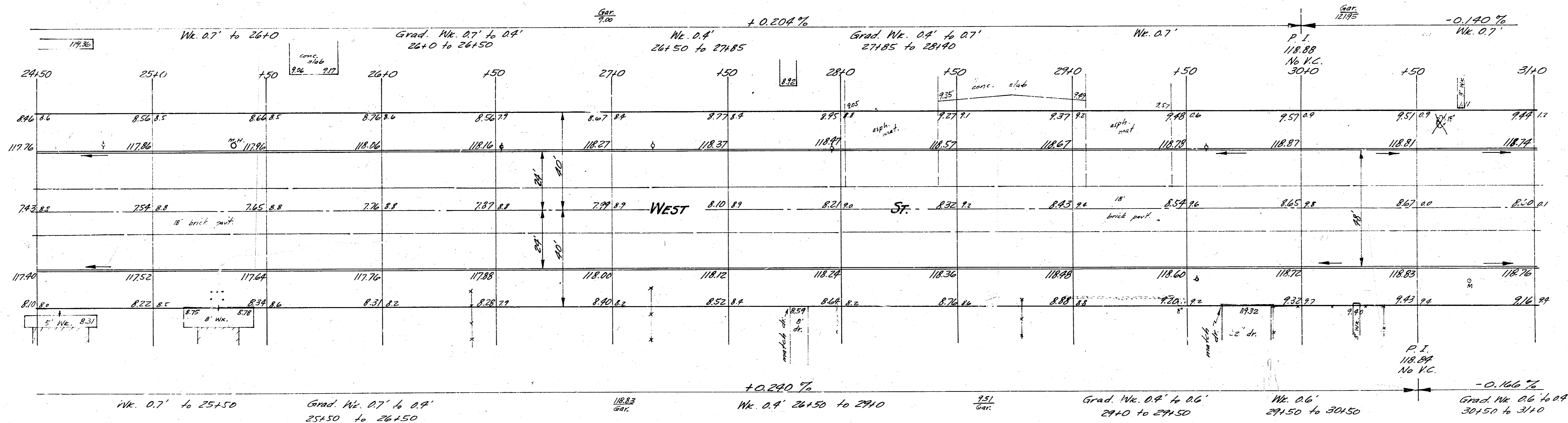
WEST ST.
PROJ. C16-148

5
14

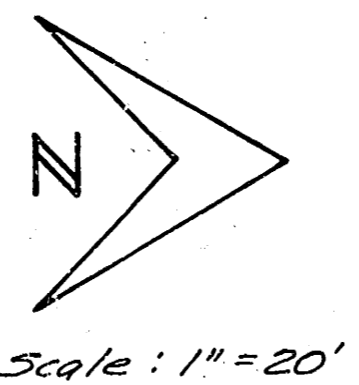
B.M. 117.71 4' N.E. Cor. Conc. base Signal Light
S.W. Cor. West & Maple



Scale: 1" = 20'

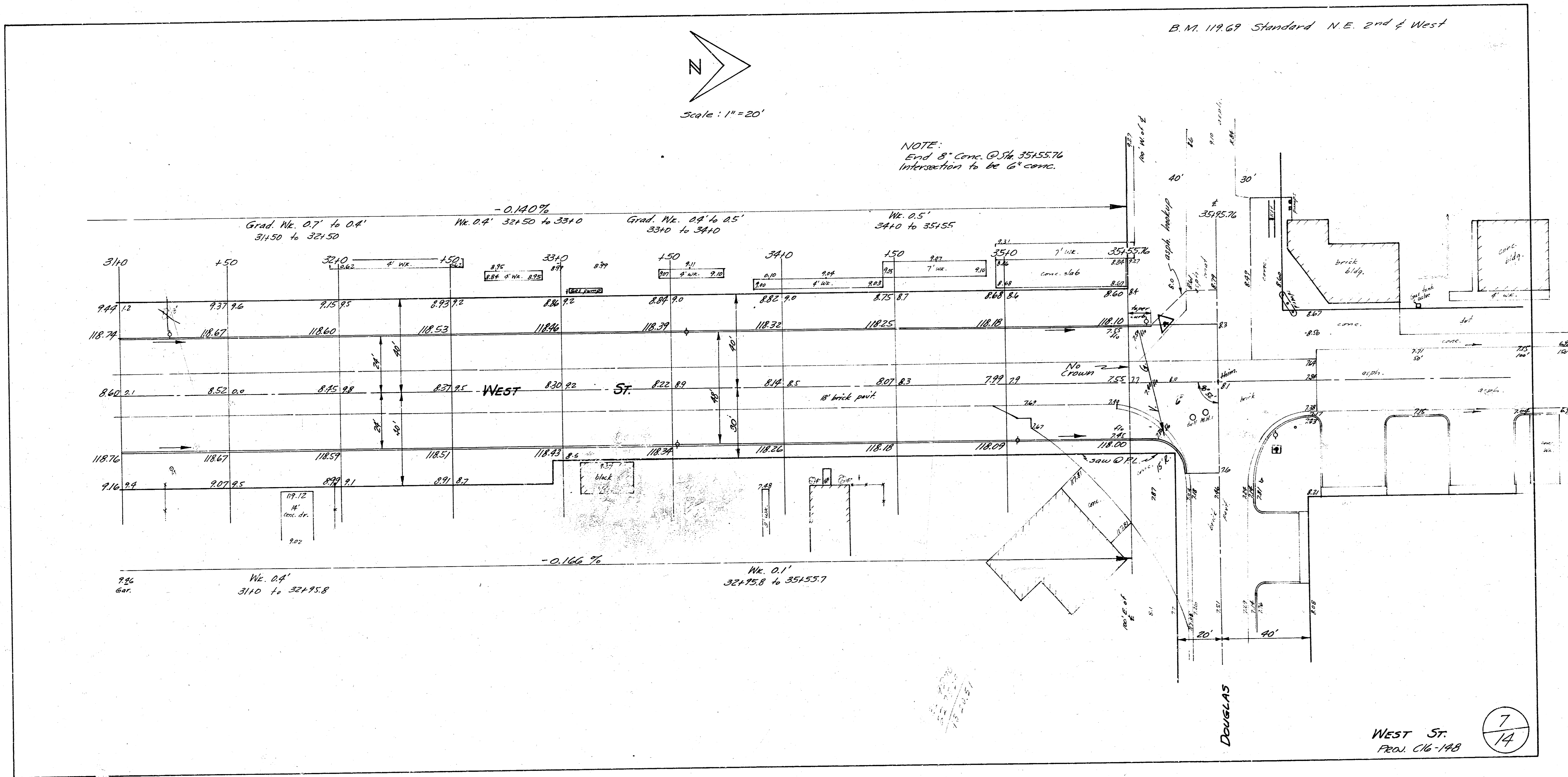


B.M. 119.69 Standard N.E. 2nd & West



Scale: 1" = 20'

NOTE:
End 8" Conc. @ Sta. 35155.76
Intersection to be 6" conc.



WEST ST.
PROJ. C16-148

7
14