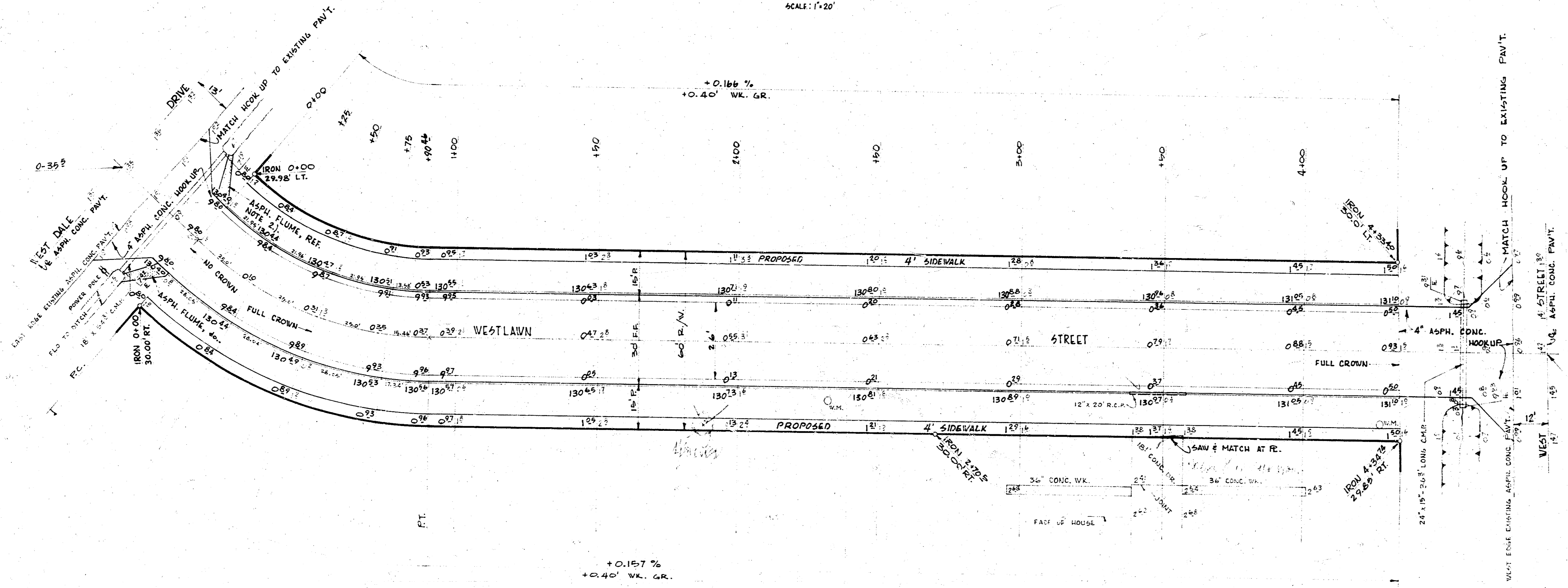


B.M. 129.21 R.R. SPIKE, E. SIDE PPOLE ON 4.E. COR. WESTLAWN & WESTDALE.
 B.M. 130.27 R.R. SPIKE, E. SIDE PPOLE ON 4.E. COR. 19TH ST. & WESTDALE.
 B.M. 133.52 N.W. COR. CONC. PORCH. APARTMENT # 4003 WESTLAWN.

BASELINE ON W. WESTLAWN ST.



CURVE DATA BASED ON $R=123.08'$ $\Delta=41^{\circ}04'30''$ DEFLECTION $=13.96550$ MIN./FT.

STATION	B' OFFSET FROM FACE OF LEFT CURB.		B' OFFSET FROM FACE OF RIGHT CURB.		DEFLECTION	ACCUMULATED DEFLECTION
	ARC	CHORD	ARC	CHORD		
P.C. 0+00	-	-	-	-	-	-
+25	20.33'	20.29'	29.67'	29.62'	5° 49' 07"	5° 49' 07"
+50	20.33'	20.30'	29.67'	29.62'	5° 49' 07"	11° 38' 14"
+75	20.33'	20.29'	29.67'	29.62'	5° 49' 07"	17° 27' 21"
P.T. +90.44	12.57'	12.56'	18.35'	18.34'	3° 35' 04"	21° 03' 15"

NOTES:
 1) CONTRACTOR TO CLEAR RIGHT OF WAY, GRADE PARKING, AND COMPACT FILL FOR PROPOSED SIDEWALK. SIDEWALK TO BE CONSTRUCTED BY OTHERS.
 2) CONTRACTOR TO CONSTRUCT ASPH. FLUMES AS NECESSARY TO PREVENT EROSION AT EACH END OF CULVERT AT WESTDALE LOOKUP. FIELD ENGINEER TO BE RESPONSIBLE FOR LOCATION & SIZE. PAYMENT TO BE INCLUDED IN "TONS ASPHALT".

EARTHWORK

	EXCAVATION		COMP. FILL	
	PROPERTY	CITY	PROPERTY	CITY
PLUS 10%	1,292.5 C.Y.	55.2 C.Y.	1.0 C.Y.	0.1
TOTALS	1,421.9 C.Y.	60.7 C.Y.	1.1 C.Y.	

WESTLAWN STREET FROM E.L. WESTDALE DRIVE TO W.L. WEST STREET.
 26'-2'-30" ASPH. CONC.
 CITY OF WICHITA, KANSAS.
 D.R. SMITH, CITY ENGINEER
 DATE: SEPT. 1968 PROJECT No. C19-119
 SHEET 1 OF 2