

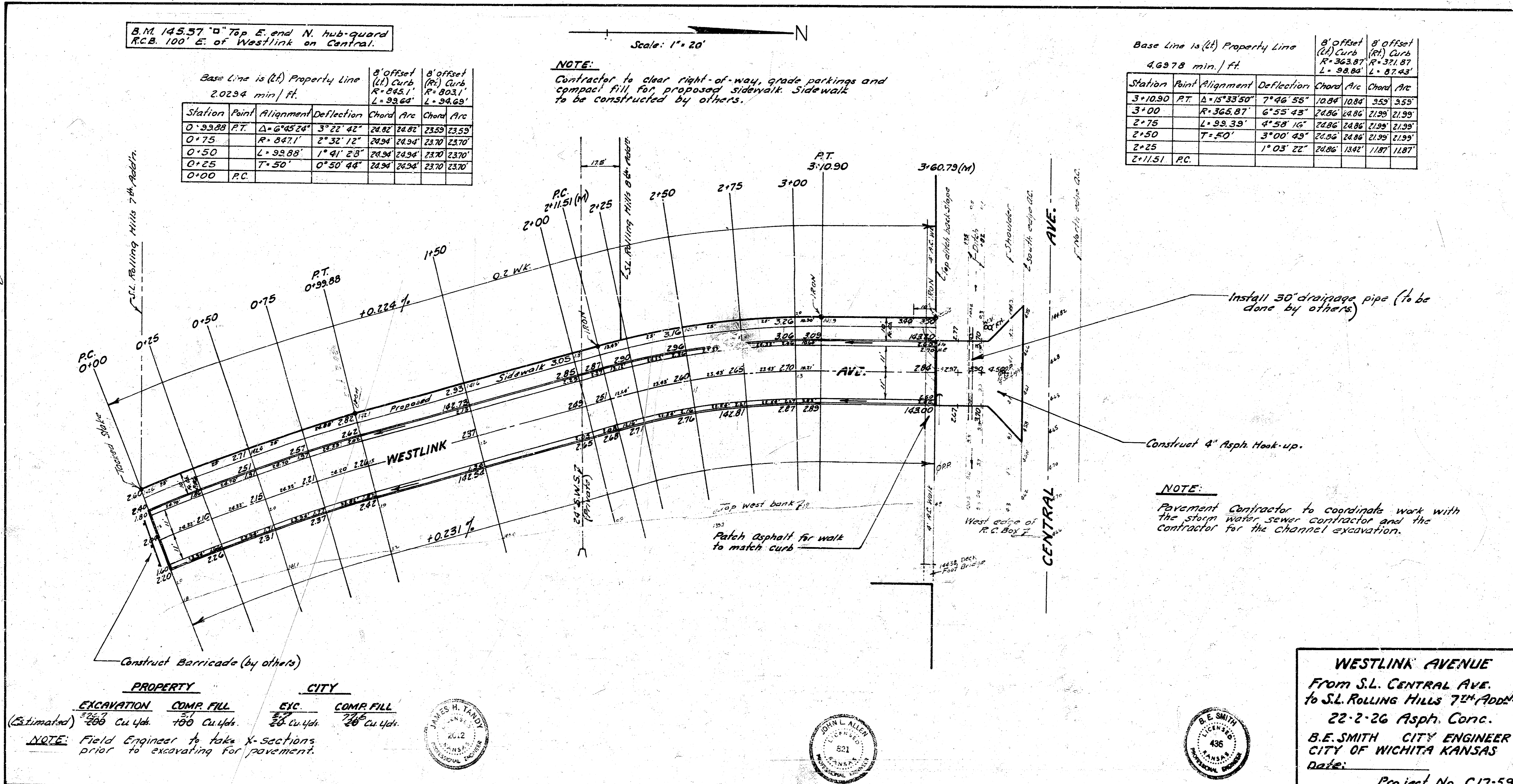
B.M. 145.37 "B" Top E. end N. hub-guard
R.C.B. 100' E. of Westlink on Central.

Scale: 1" = 20'

Station Point	Alignment	Deflection	Chord	Arc	Chord	Arc
0+00	PC					
0+25		7° 50'	74.94'	24.94'	23.70'	23.70'
0+50		1° 41' 28"	74.94'	24.94'	23.70'	23.70'
0+75		2° 32' 12"	74.94'	24.94'	23.70'	23.70'
0+99.88	PT	Δ = 6° 45' 24"	24.82'	24.82'	23.53'	23.53'

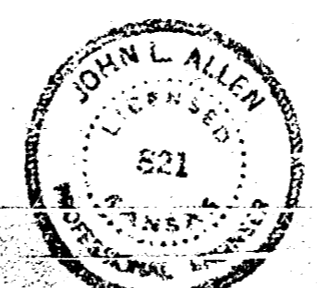
NOTE:
Contractor to clear right-of-way, grade parkings and compact fill for proposed sidewalk. Sidewalk to be constructed by others.

Station Point	Alignment	Deflection	Chord	Arc	Chord	Arc
3+00	PT	Δ = 15° 33' 50"	77° 46' 55"	10.84'	10.84'	3.53'
3+10.90		R = 365.87'	6° 55' 45"	24.86'	24.86'	21.99'
3+25		L = 99.33'	4° 58' 16"	24.86'	24.86'	21.99'
3+50		T = 50'	3° 00' 49"	24.86'	24.86'	21.99'
3+75			1° 03' 22"	24.86'	13.42'	11.87'
3+115.1	PC					



PROPERTY		CITY	
EXCAVATION	COMP. FILL	EXC.	COMP. FILL
(Estimate) 260 Cu Yds.	100 Cu Yds.	20 Cu Yds.	26 Cu Yds.

NOTE: Field Engineer to take X-sections prior to excavating for pavement.



WESTLINK AVENUE
From S.L. CENTRAL AVE.
to S.L. ROLLING HILLS 7th ADDN.
22-2-26 Asph. Conc.
B.E. SMITH CITY ENGINEER
CITY OF WICHITA KANSAS
Date: _____
Project No. C17-59