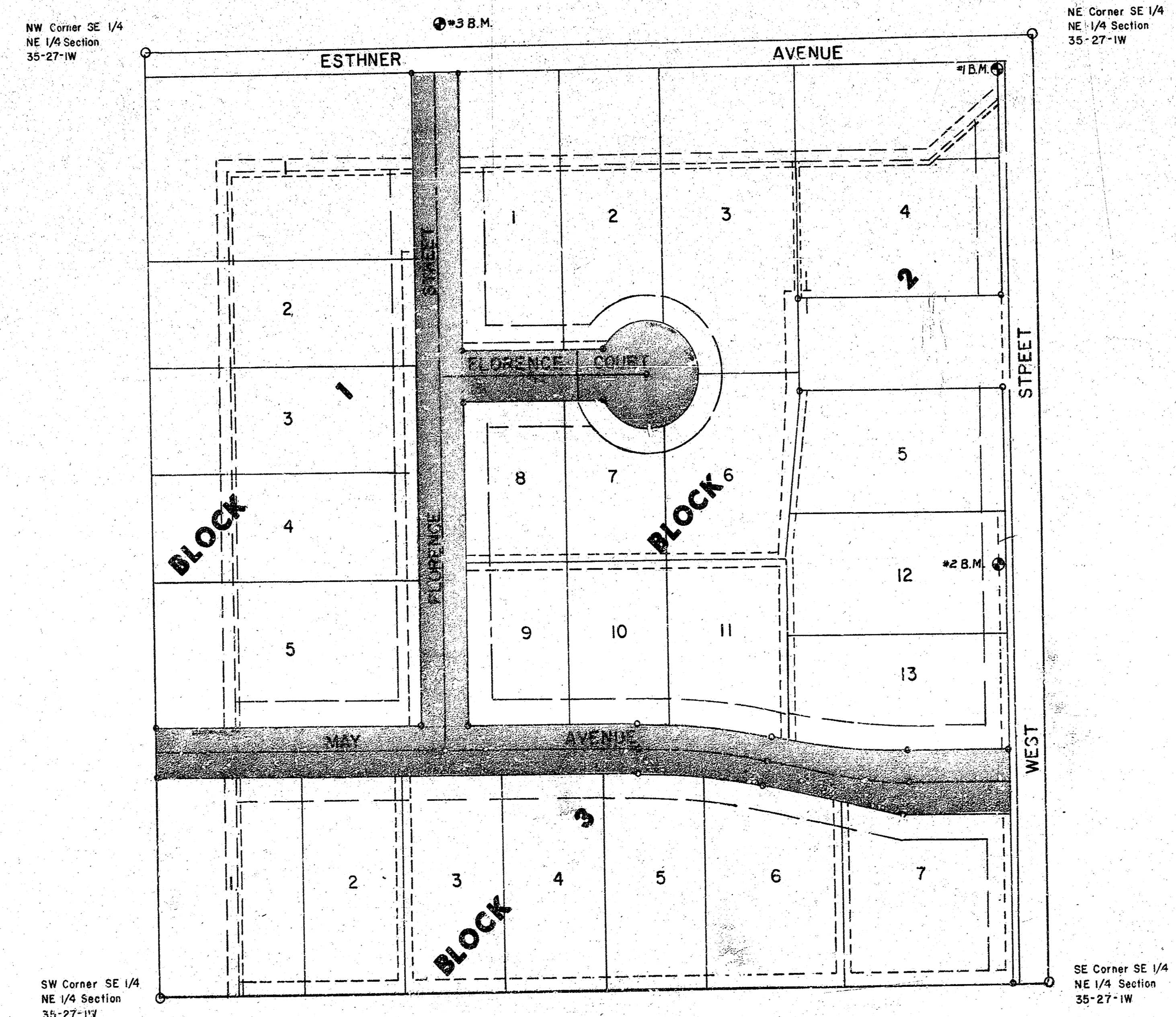


STREETS IN WESTPARK ADDITION

PROJECT NO.
472-76-245-80807-000-000-001

CITY OF WICHITA, KANSAS
DEAN SELLERS
ACTING CITY ENGINEER

FLORENCE STREET - N.L. MAY AVE. TO S.L. ESTHNER AVE.
FLORENCE COURT - E.L. FLORENCE ST. TO & INCLUDING CUL-DE-SAC
MAY AVE. - W.L. WESTPARK ADDITION TO W.L. WEST ST.

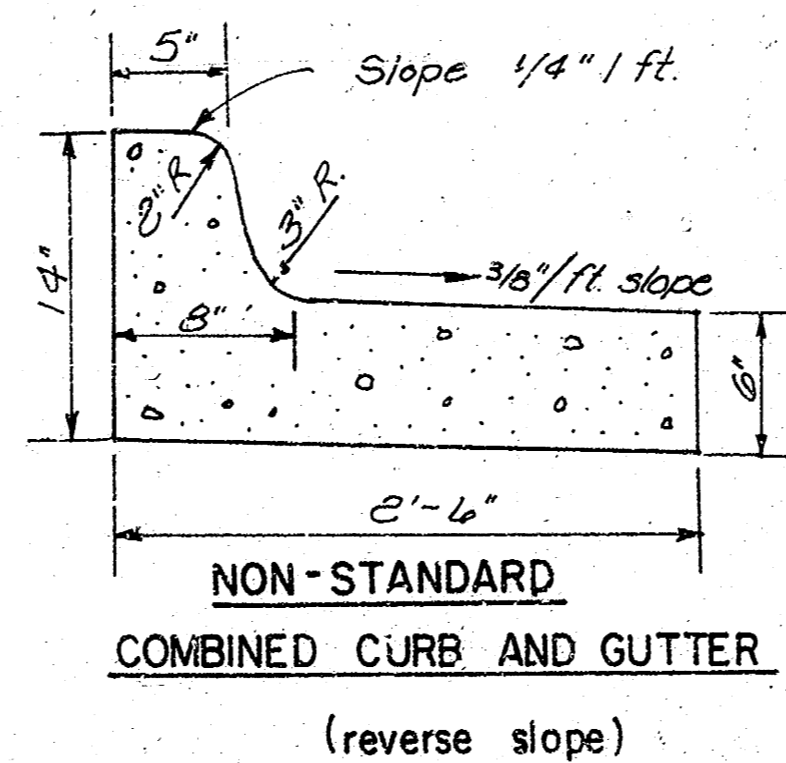
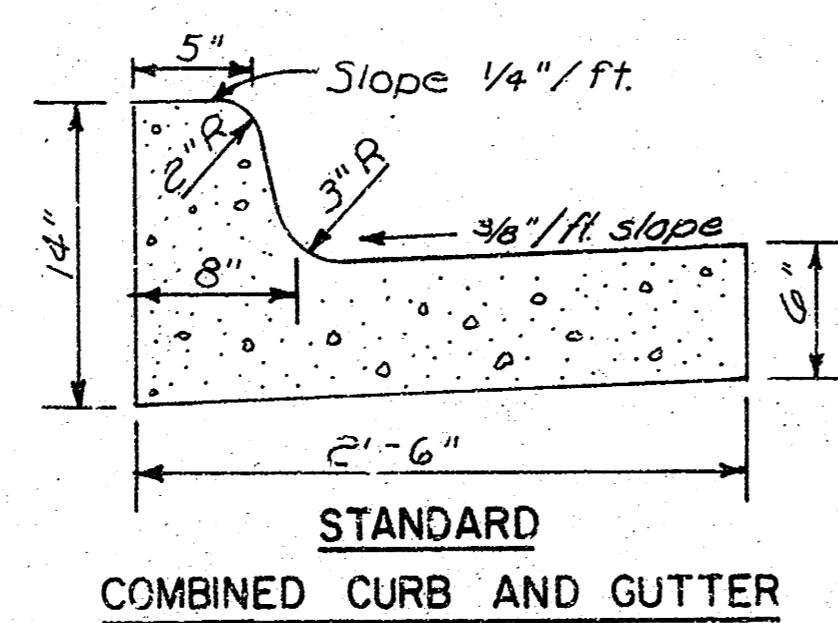
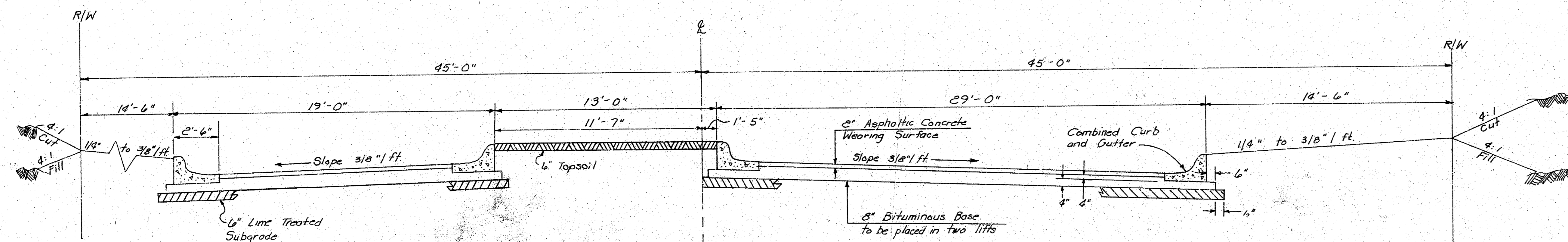
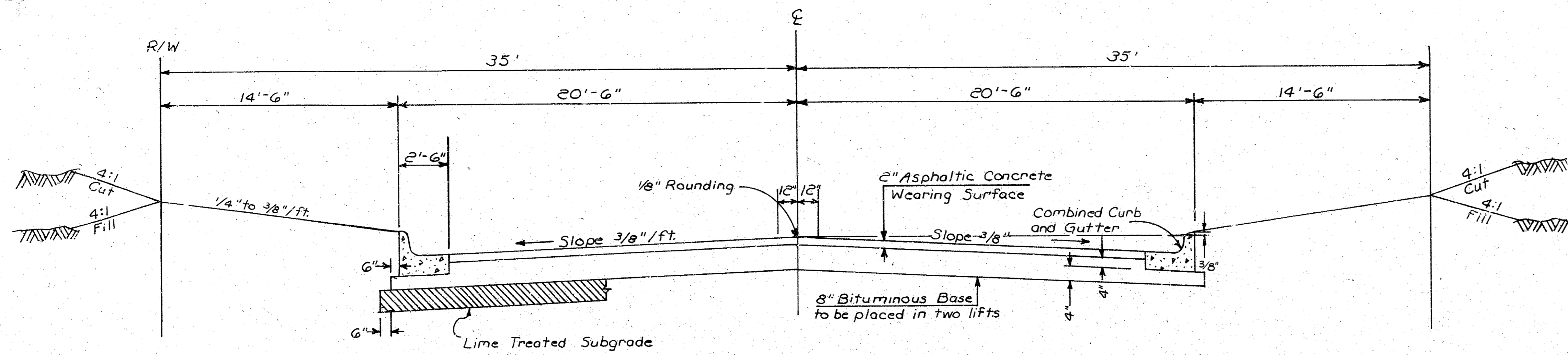


SHEET NO.	DESCRIPTION
1	TITLE SHEET
2	PAVING DETAILS
3-5	MAY AVENUE
6-7	FLORENCE AVENUE
8	FLORENCE COURT
9-15	CROSS SECTIONS



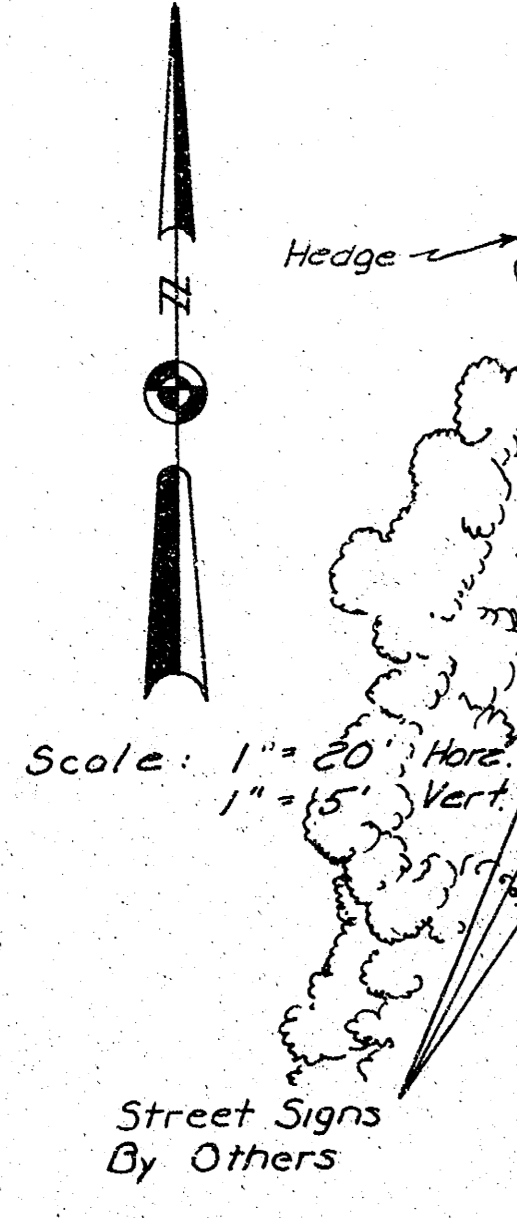
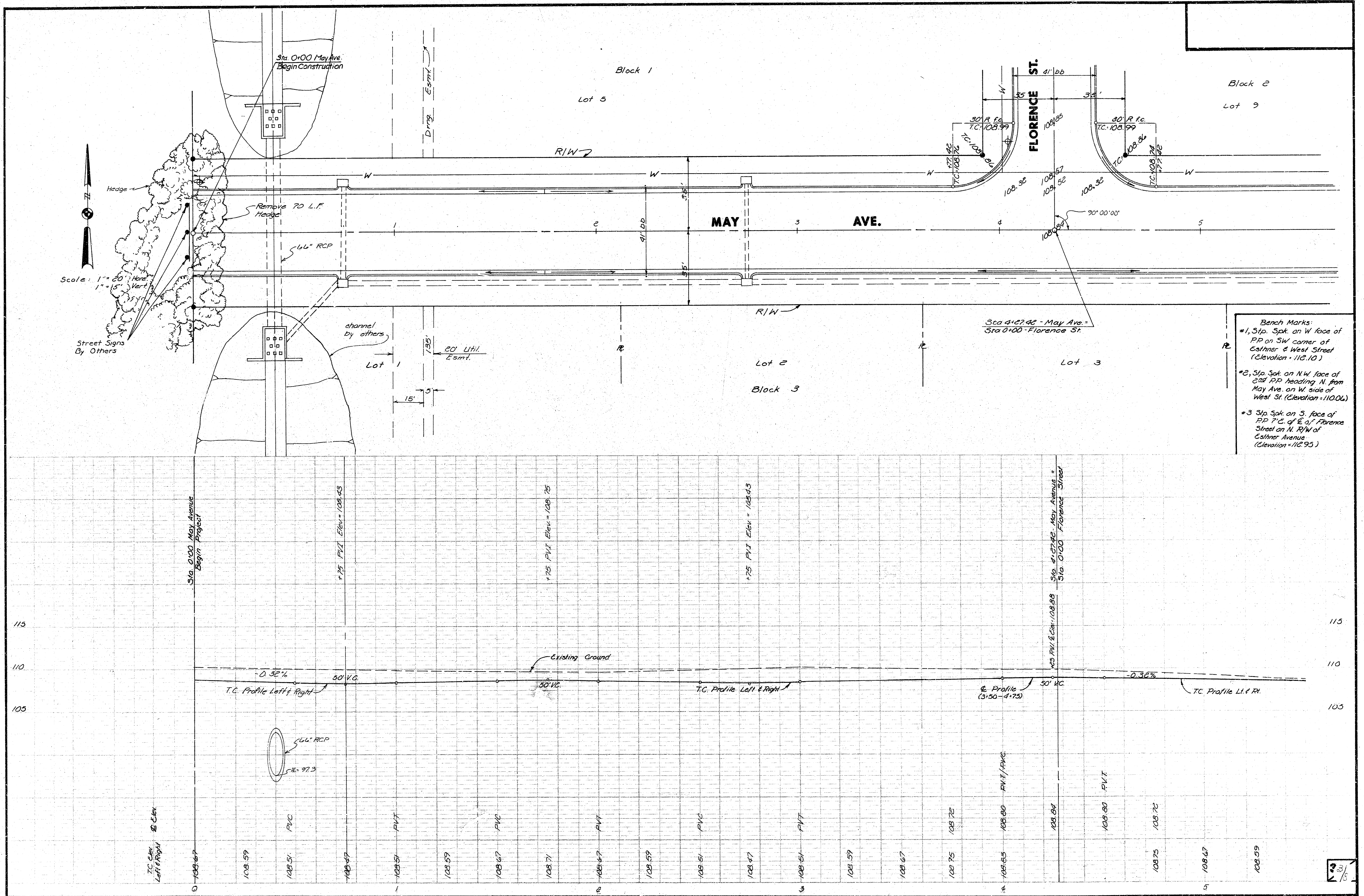
Van Doren - Hazard - Stallings
Architects • Engineers • Planners
Topeka Wichita Minneapolis

Sheet 1
of 15



GENERAL NOTES

1. A Tack Coat of Emulsified Asphalt (SS - 1H) shall be applied at an approximate rate 0.05 gallons per square yard between lifts of asphaltic materials when ordered by the Engineer. Tack Coat will not be paid for directly and shall be considered as subsidiary to price bid for Asphaltic Pavement.
Bituminous Base and Asphaltic Concrete Wearing Surface shall be placed with a laydown machine having automatic electronic controls for crown and grade. Construction Joints in each lift shall be staggered a minimum distance of 1 foot with joints in preceding lifts and such that a joint will be constructed on the pavement centerline in the top lift.
2. The A.C. Pavement between combined curb and gutter shall be paid as square yards 10" A.C. Pavement (8" Bituminous Base). The Bituminous Base under the combined curb and gutter shall be paid as square yards 4" Bituminous Base.
3. Ground elevation at right of way line equals top of curb plus 0.3 feet.

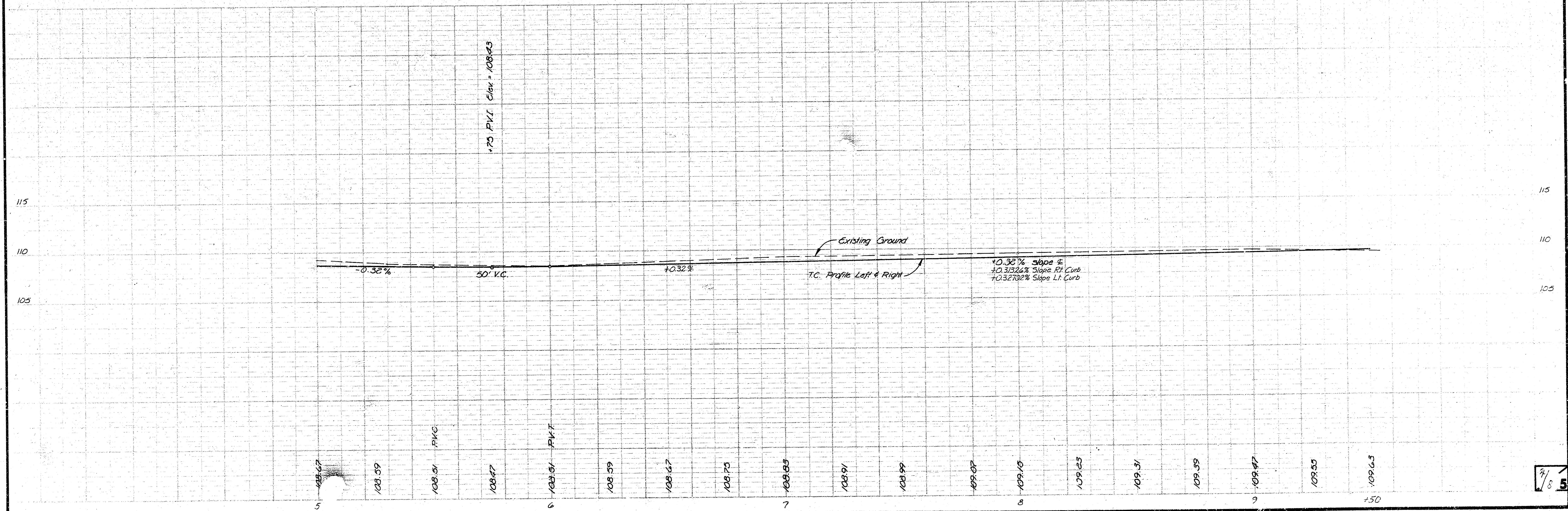
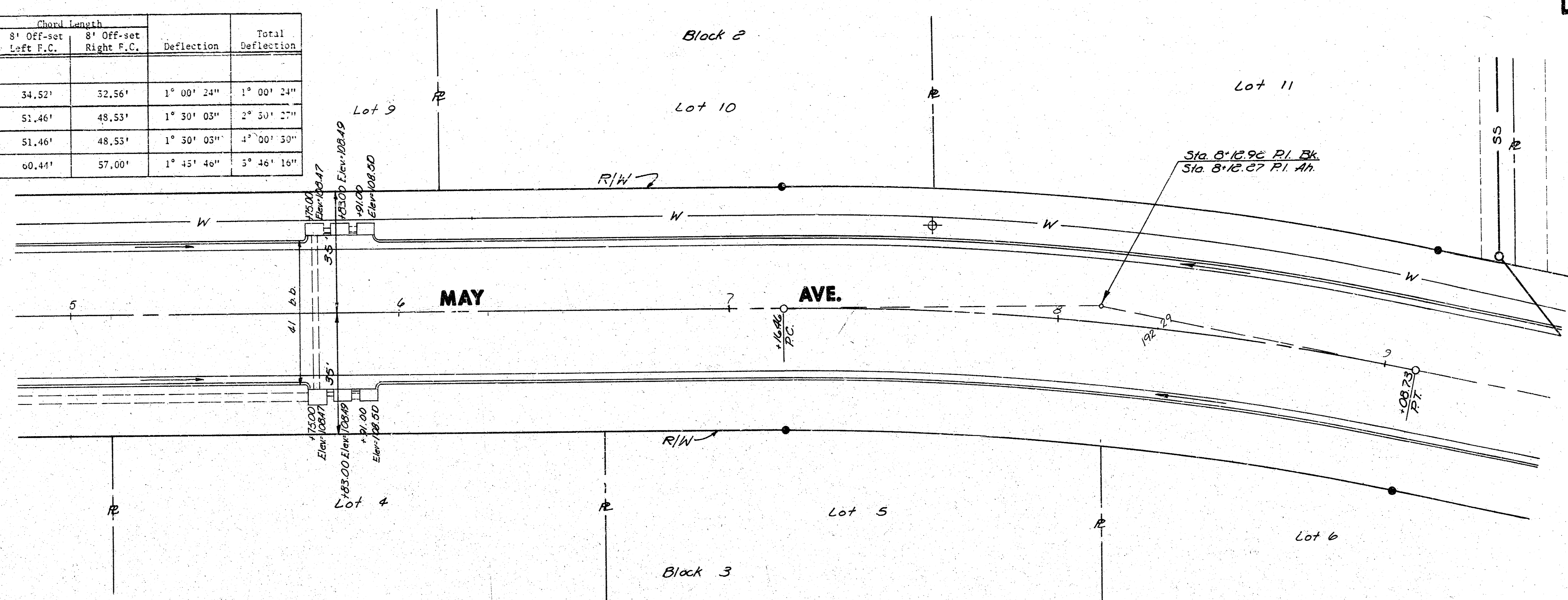


- Bench Marks:
- *1, Stp. Spk. on W face of PP on SW corner of Esthner & West Street (Elevation = 112.10)
 - *2, Stp. Spk. on N.W. face of 2nd PP heading N. from May Ave. on W. side of West St. (Elevation = 110.06)
 - *3 Stp. Spk. on S. face of PP P.C. of E. of Florence Street on N. R/W of Esthner Avenue (Elevation = 112.95)

CURVE DATA BASED ON 954.45' R. (C.L.)
 $\Delta/2 = 5^\circ 46' 16''$

C.L. Sta.	C.L. Arc	Chord Length		Deflection	Total Deflection
		8' Off-set Left F.C.	8' Off-set Right F.C.		
7 + 18.48 P.C.					
+ 50	33.54'	34.52'	32.56'	1° 00' 24"	1° 00' 24"
S + 00	50'	51.46'	48.53'	1° 30' 03"	2° 30' 27"
- 50	50'	51.46'	48.53'	1° 30' 03"	4° 00' 30"
9 + 03.73 P.T.	58.73'	60.44'	57.00'	1° 45' 46"	5° 46' 16"

Scale: 1" = 20' Horiz.
 1" = 5' Vert.



CURVE DATA BASED ON 539.94' R. (C.L.)
 $\Delta/2 = 5^\circ 46' 16''$

C.L. Sta.	C.L. Arc.	C.L. Chord	Deflection	Total Deflection
10 + 07.68 P.C.				
10 + 50	42.32'	42.31'	2° 14' 43"	2° 14' 43"
11 + 0	50'	49.98'	2° 39' 10"	4° 53' 53"
+ 16.45 P.T.	16.45'	16.45'	0° 53' 23"	5° 46' 16"

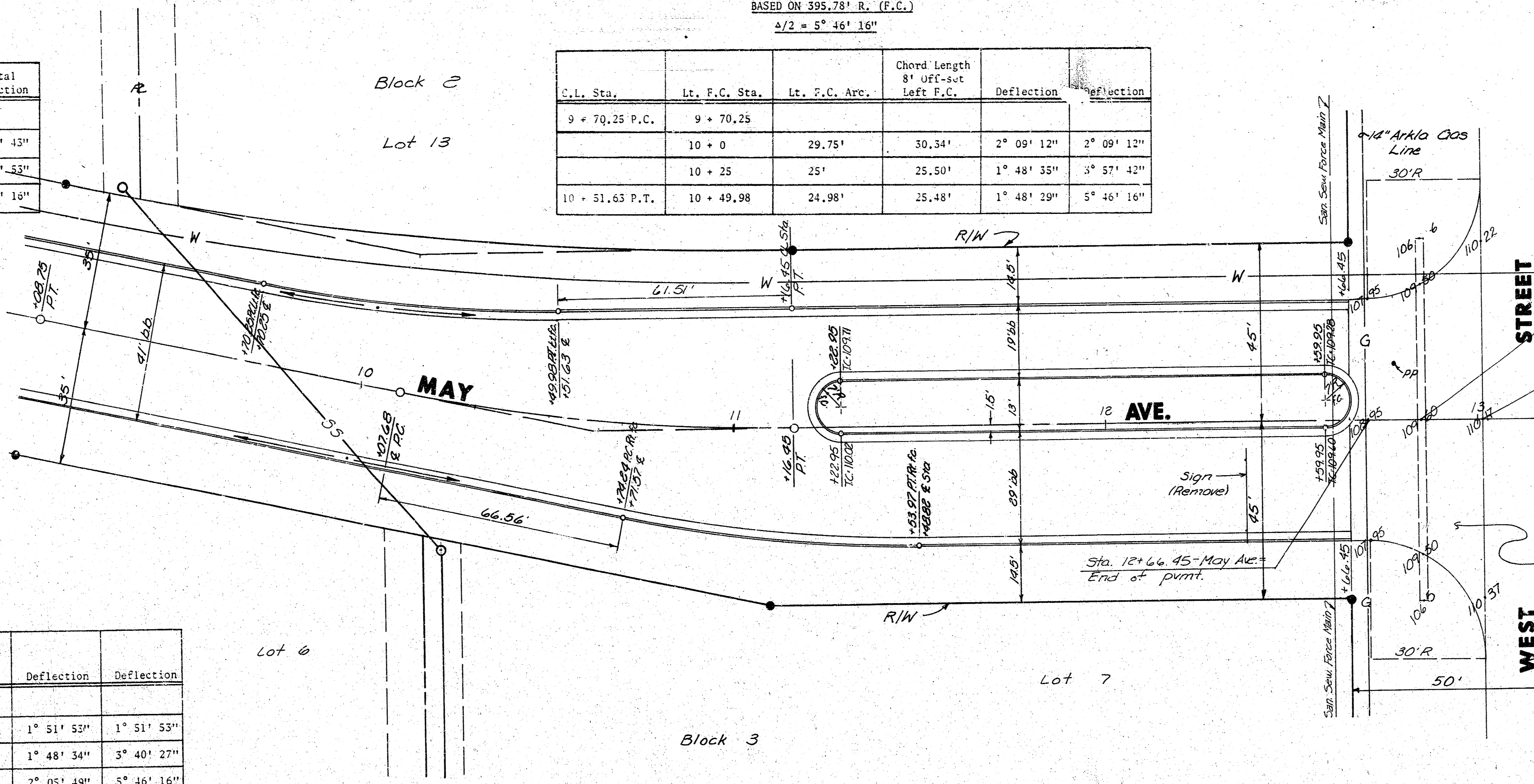
LEFT F.C. CURVE DATA
 BASED ON 395.78' R. (F.C.)
 $\Delta/2 = 5^\circ 46' 16''$

C.L. Sta.	Lt. F.C. Sta.	Lt. F.C. Arc.	Chord Length 8' Off-set Left F.C.	Deflection	Deflection
9 + 70.25 P.C.	9 + 70.25				
	10 + 0	29.75'	30.34'	2° 09' 12"	2° 09' 12"
	10 + 25	25'	25.50'	1° 48' 35"	3° 57' 42"
10 + 51.65 P.T.	10 + 49.98	24.98'	25.48'	1° 48' 29"	5° 46' 16"

RIGHT F.C. CURVE DATA
 BASED ON 395.87' R. (F.C.)
 $\Delta/2 = 5^\circ 46' 16''$

C.L. Sta.	Rt. F.C. Sta.	Rt. F.C. Arc.	Chord Length 8' Off-set Right F.C.	Deflection	Deflection
10 + 71.57 P.C.	10 + 74.24				
	11 + 0	25.76'	26.28'	1° 51' 53"	1° 51' 53"
	11 + 25	25'	25.50'	1° 48' 34"	3° 40' 27"
11 + 48.82 P.T.	11 + 57.97	28.97'	29.55'	2° 05' 49"	5° 46' 16"

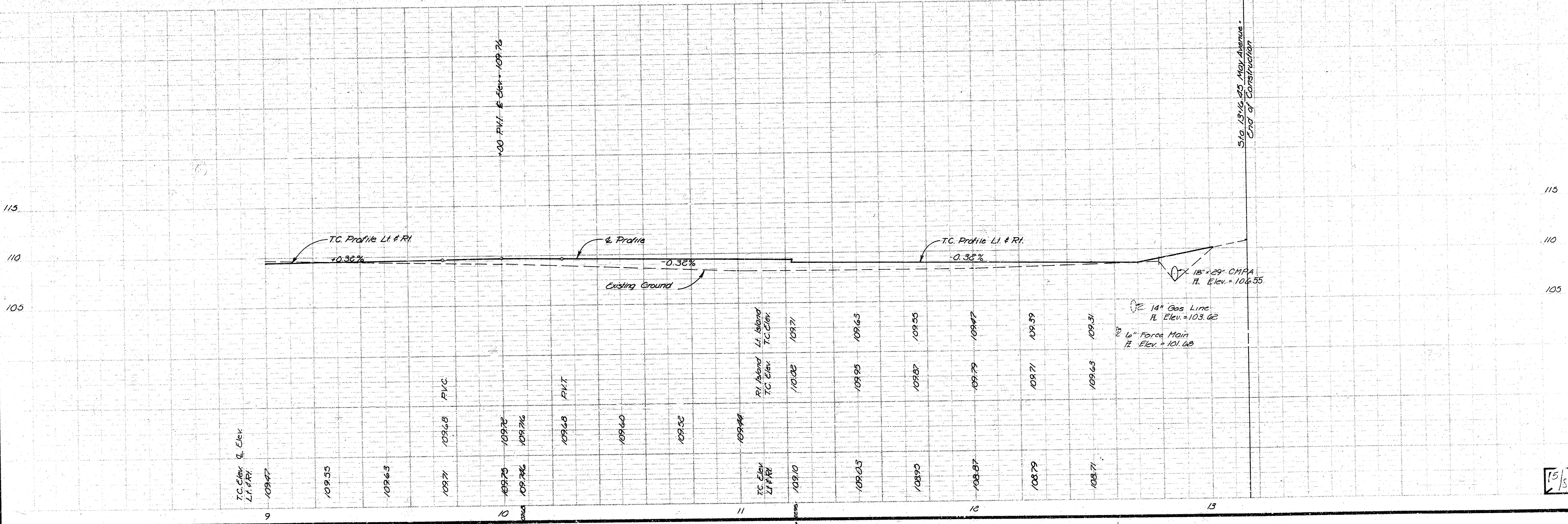
Scale: 1" = 20' Horiz.
 1" = 5' Vert.



Sta. 12+86.00 - 46' Lt. to 46' Rt.
 Install 92 L.F. 18" x 29" CMPA

Sta. 13+1.45 - May Ave. =
 End of Construction

Note
 Contractor shall be
 responsible for contacting
 Power Company to coordinate
 removal and/or relocation
 of power poles.



15/5

