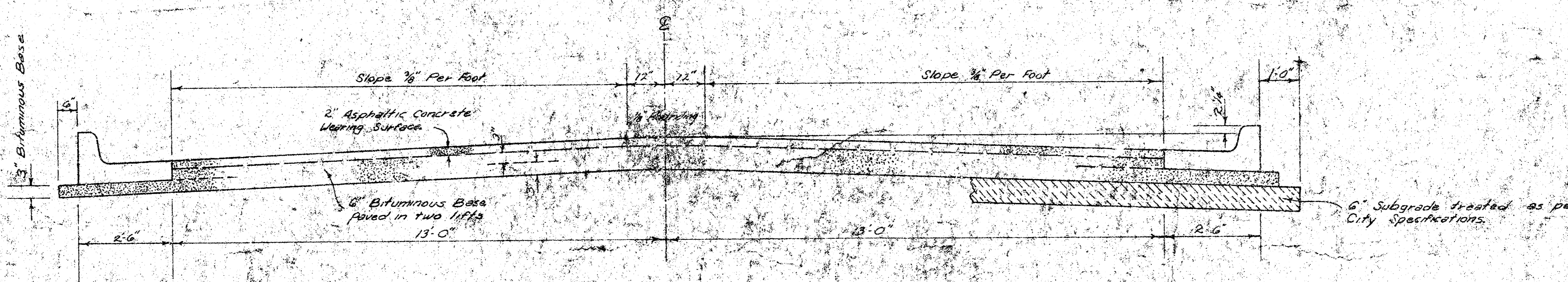


Westridge Court

E.L. Westridge Drive To & Including Cul-De-Sac



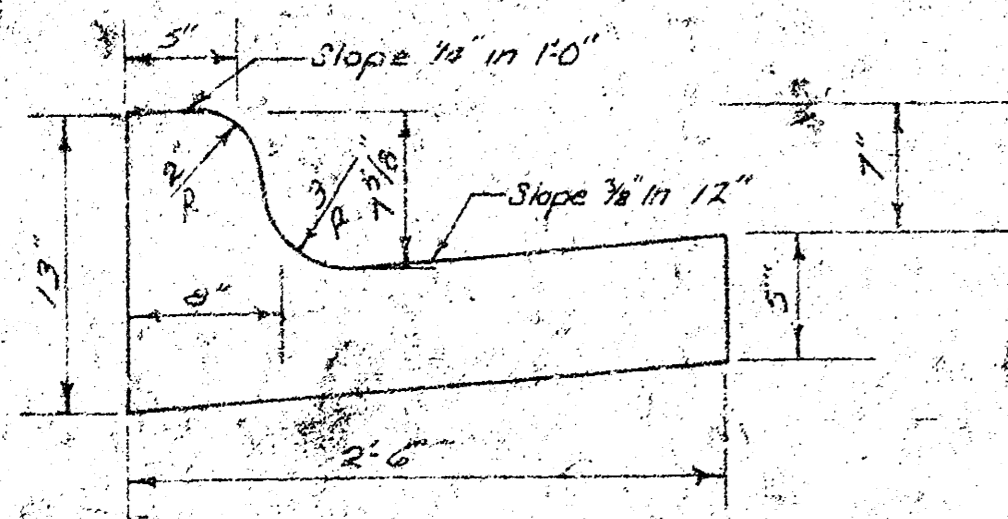
TYPICAL SECTION

31' ASPHALTIC CONCRETE PAVEMENT WITH BITUMINOUS BASE

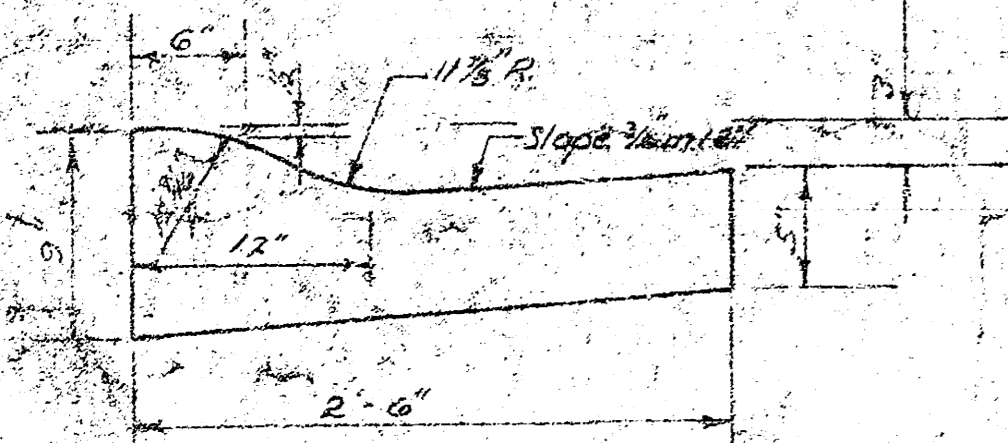
A TACK COAT OF EMULSIFIED ASPHALT (SS-1H) SHALL BE APPLIED AT AN APPROXIMATE RATE OF 0.05 GALLONS PER SQ. YD. BETWEEN LIFTS OF ASPHALTIC MATERIALS WHEN ORDERED BY THE ENGINEER. TACK COAT WILL NOT BE PAID FOR DIRECTLY AND SHALL BE CONSIDERED AS SUBSIDIARY TO PRICE BID FOR ASPHALTIC PAVEMENT. BITUMINOUS BASE AND ASPHALTIC CONCRETE WEARING SURFACE SHALL BE PLACED WITH A LAYDOWN MACHINE HAVING AUTOMATIC ELECTRONIC CONTROLS FOR CROWN AND GRADE. CONSTRUCTION JOINTS IN EACH LIFT SHALL BE STAGGERED A MINIMUM DISTANCE OF 1' WITH JOINTS IN PRECEDING LIFTS AND SUCH THAT A JOINT WILL BE CONSTRUCTED ON THE PAVEMENT CENTERLINE IN THE TOP LIFT.

The A.C. pavement between the Comb. Curb & gutter shall be paid as 3\"/>

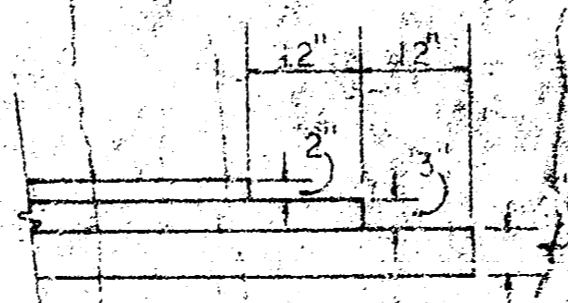
COMBINED CURB & GUTTER



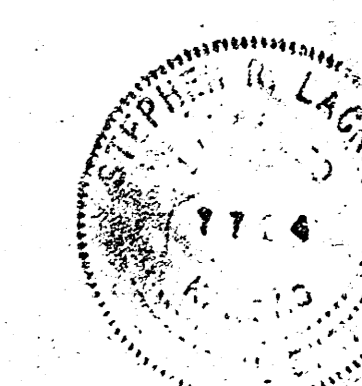
ROLL TYPE CURB & GUTTER



DETAIL OF TRANSVERSE CONSTRUCTION JOINTS



TRANSVERSE CONSTRUCTION JOINTS SHALL BE CONSTRUCTED IN FLEXIBLE BASE PAVEMENTS AT LOCATIONS WHERE PAVEMENT TEMPORARILY ENDS TO FACILITATE FUTURE PAVEMENT CONSTRUCTION AS SHOWN BY DETAIL. THE COST OF CONSTRUCTING THE TRANSVERSE CONSTRUCTION JOINTS SHALL NOT BE MEASURED OR PAID FOR DIRECTLY BUT SHALL BE INCLUDED IN THE BID PRICE FOR SQUARE YARDS OF ASPHALTIC CONCRETE PAVEMENT.



CITY OF WICHITA, KANSAS

DEPARTMENT OF PUBLIC WORKS — ENGINEERING

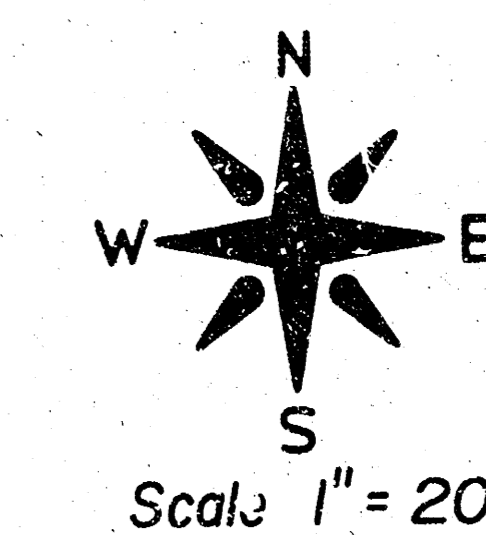
DEAN SELLERS CITY ENGINEER

DATE: _____ PROJ. NO. 472 7 / 80808 000 000 001
SHEET NO. 1 O. / 3

B.M. 135.27 SE Cor. Conc. Porch House No. 2047 Westridge Drive

No More Than 5 - 20' Drives Are To Be Constructed On This Project.

Baseline Is Centerline Of Westridge Court



$\Delta = 20^\circ 44' 15''$ R. = 327.76' T = 59.97' L = 118.64' LC = 117.95'

CURVE DATA BASED ON CTR. LINE RAD $\Delta = 117.22' 10''$

STA.	ARC	CHORD LENGTH	DEFLECTION	TOTAL DEFLECTION
		Δ OFF. Δ CO.	Δ OFF. Δ CO.	
0+20.82			0' 00" 00"	0' 00" 00"
0+06.82	14.43	13.42	15.44	1' 15" 40"
0+01.82	4.93	4.58	5.27	0' 25" 50"
0+13.82	14.52	12.5	15.54	1' 16" 09"
0+31.8	18.49	17.19	19.79	1' 36" 58"
0+50	18.5	17.2	19.8	1' 37" 01"
0+73.2	23.9	22.22	25.57	2' 05" 21"
0+97.22	23.87	22.19	25.54	2' 05" 11"

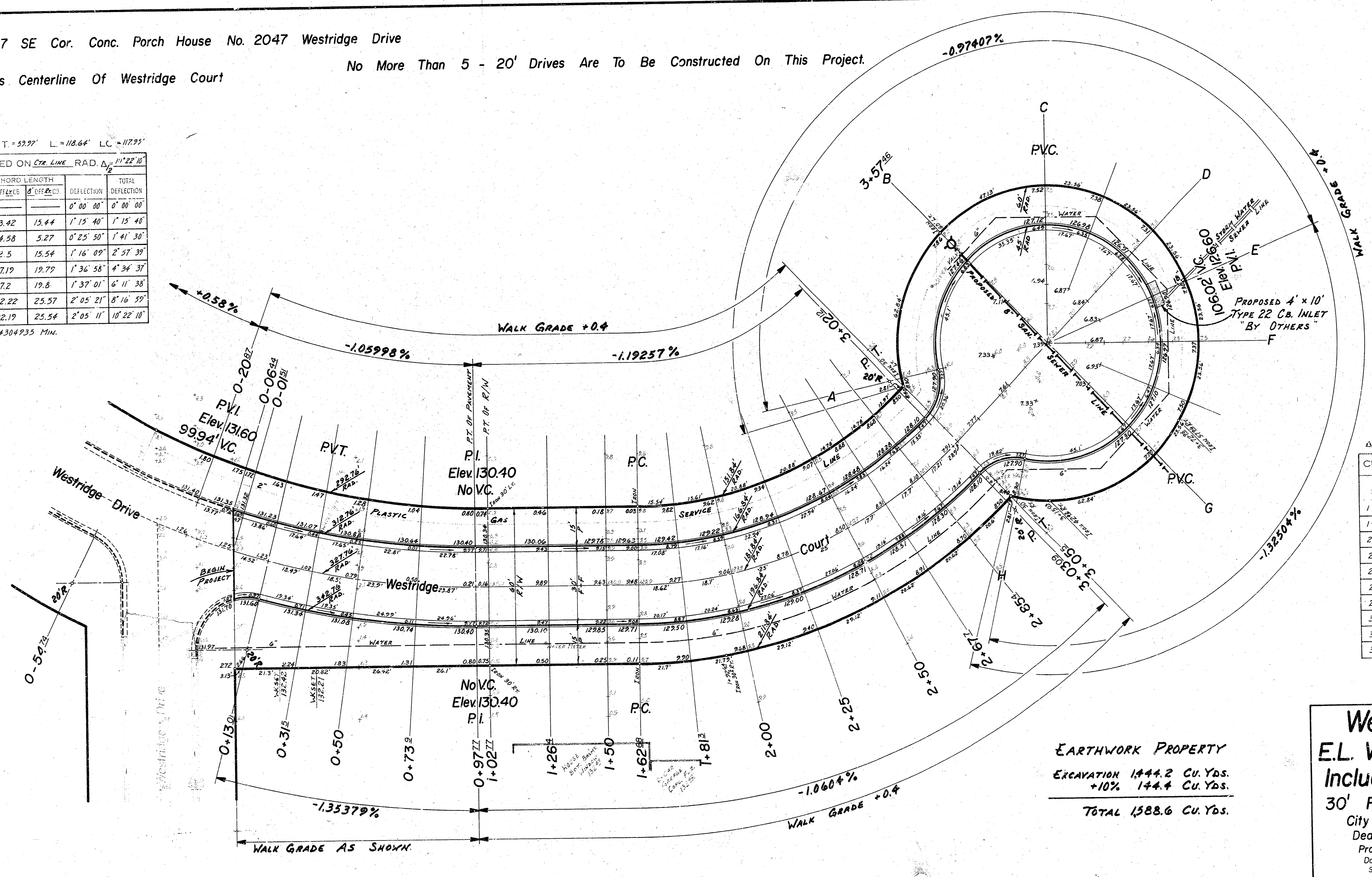
DEFL. / FT. = 5.244304935 MIN.

$\Delta = 45^\circ$ R. = 181.84' T = 73.32' L = 142.82' LC = 139.17'

CURVE DATA BASED ON CTR. LINE RAD $\Delta = 22.33'$

STA.	ARC	CHORD LENGTH	DEFLECTION	TOTAL DEFLECTION
		Δ OFF. Δ CO.	Δ OFF. Δ CO.	
1+62.82			0' 00" 00"	0' 00" 00"
1+81.2	18.62	16.26	20.97	2' 36" 01"
2+00	18.7	16.33	21.06	2' 36" 45"
2+25	25.0	21.82	28.14	3' 36" 19"
2+50	25.0	21.82	28.14	3' 36" 19"
2+67.2	17.7	15.46	19.93	2' 47" 19"
2+85.4	17.7	15.46	19.93	2' 47" 19"
3+02.4	16.72	14.6	18.83	2' 38" 06"
3+03.82	0.97	0.84	1.08	0' 09" 04"
3+05.2	2.41	2.11	2.72	0' 22" 45"

DEFL. / FT. = 2.452669299 MIN.



SURVEY D. KEUG
 P.E. R. E. NEWELL
 C.E. J. E. NEWELL
 CHECKED

EARTHWORK PROPERTY
 EXCAVATION 1444.2 CU. YDS.
 +10% 144.4 CU. YDS.
TOTAL 1588.6 CU. YDS.

Westridge Court
E.L. Westridge Drive To &
Including Cul-De-Sac
 30' F-F With Comb. Cb. & Gtr.
 City Of Wichita, Kansas
 Dean Sellers City Engineer
 Proj. No. 472 76 245 80808 000 000 001
 Date: 3/18/14
 Sheet 13 of 14