

STREET IMPROVEMENTS FOR EMERSON

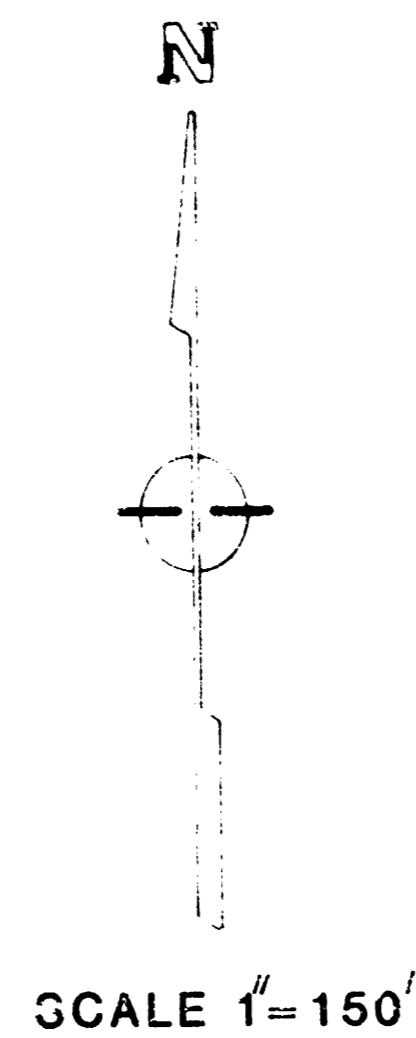
FROM THE NORTH LINE OF 17TH STREET NORTH
TO THE SOUTH LINE OF HOLLAND LANE

HOLLAND LANE

FROM THE SOUTHWEST CORNER OF LOT 19, BLOCK 13,
WESTWOOD HEIGHTS 2ND ADDITION AND WESTERLY LINE
OF EMERSON TO THE CENTERLINE OF NORTHWEST PARKWAY

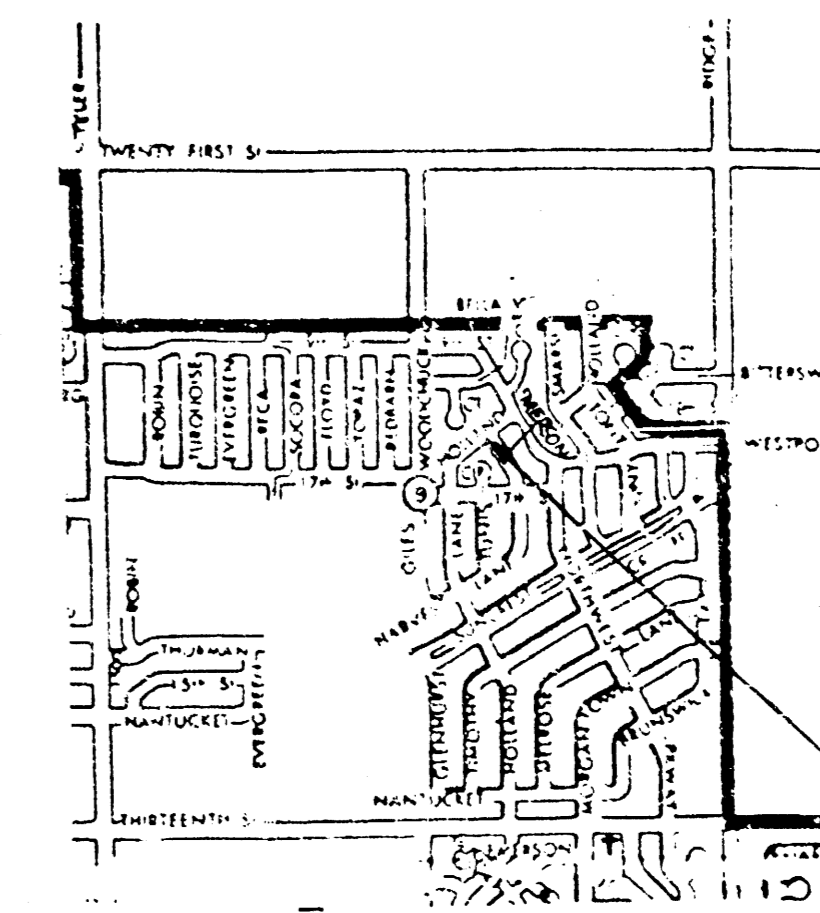
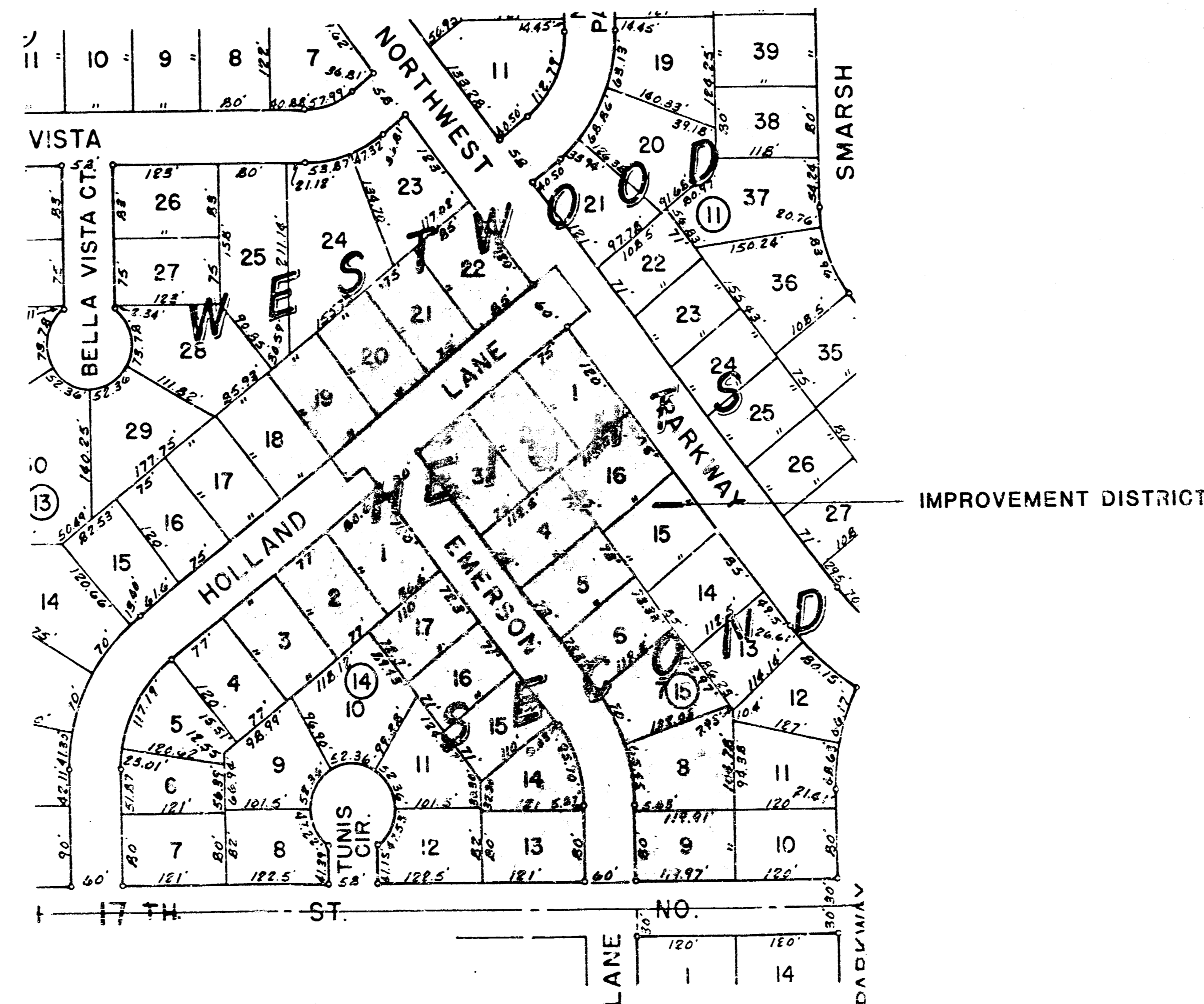
GENERAL NOTES

- Utility service lines, poles, valve boxes, meters, and appurtenances are to be adjusted as necessary by workers prior to construction unless the plans specifically call for their adjustment by the Contractor. Existing utilities and their locations as shown on the plans represent the best information obtainable for design. The contractor will be required to work around existing utilities within the right-of-way which do not conflict with proposed construction.
- A saw cut of at least one-half the depth of existing surface courses or one-fourth the depth of the existing total pavement thickness shall be provided at locations where proposed construction abuts an existing surface course or pavement for which partial removal of that surface or pavement is required. Sawed joints to facilitate removal within three (3) feet of existing joints will not be permitted and for such instances the limits of removal shall extend to the existing joint. Such saw cuts will not be paid for directly and this cost shall be considered as subsidiary to the removal of the surface or pavement.
- No more than 7 drives 18 feet in width, or equivalent combinations thereof, are to be constructed with this project.
- Widened gutter section of combined curb and gutter at intersections will not be paid for directly, and this cost shall be considered as subsidiary to the other contract pay items of work.
- Limits of earthwork shall match existing ground elevations at the right-of-way line unless otherwise noted on the plans with a new finished grade elevation. When a new finished grade elevation is shown, the earthwork shall extend one foot beyond the right-of-way line and then sloped up or down using permissible slopes to match the existing ground surface.
- The Contractor shall be responsible for preserving property irons. The Contractor will be required to re-establish any property irons which are damaged or destroyed by his construction operations. Such irons shall be re-established by a licensed land surveyor or a licensed professional engineer in accordance with state laws.

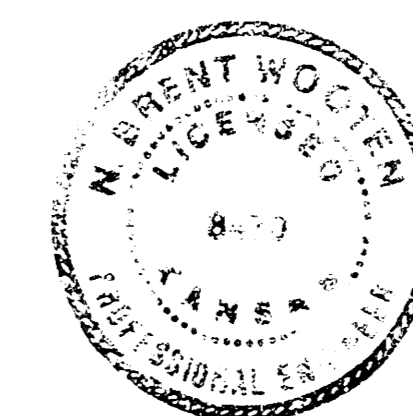


PROJECT NUMBER
472-76-245-81558-000-000-001

CITY OF WICHITA, KS.
MICHAEL E. LINDEBAK CITY ENGINEER



PROJECT VICINITY

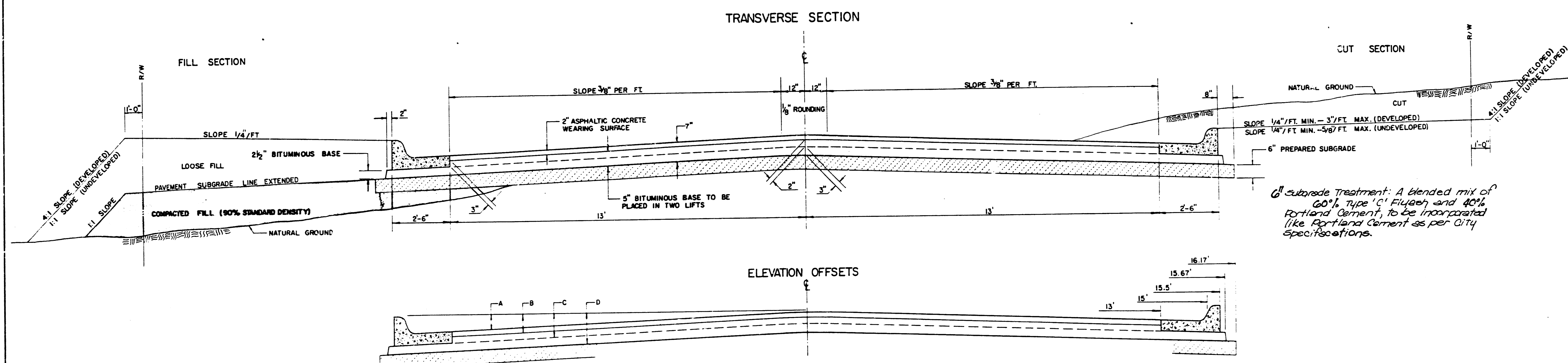


SEPT. 1986

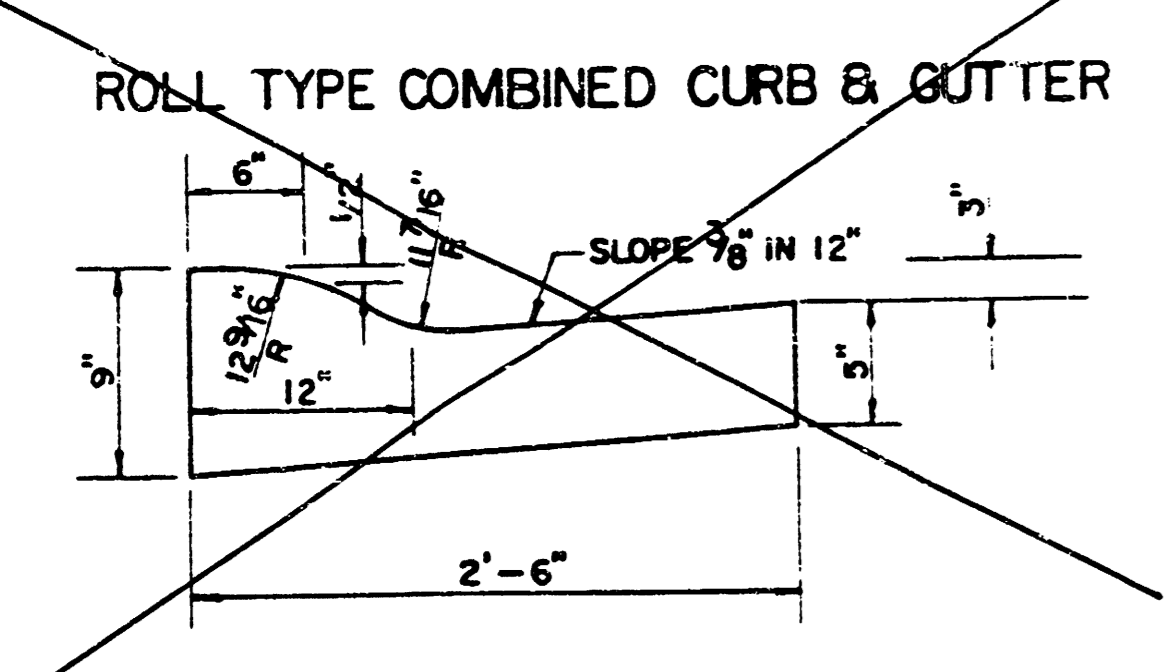
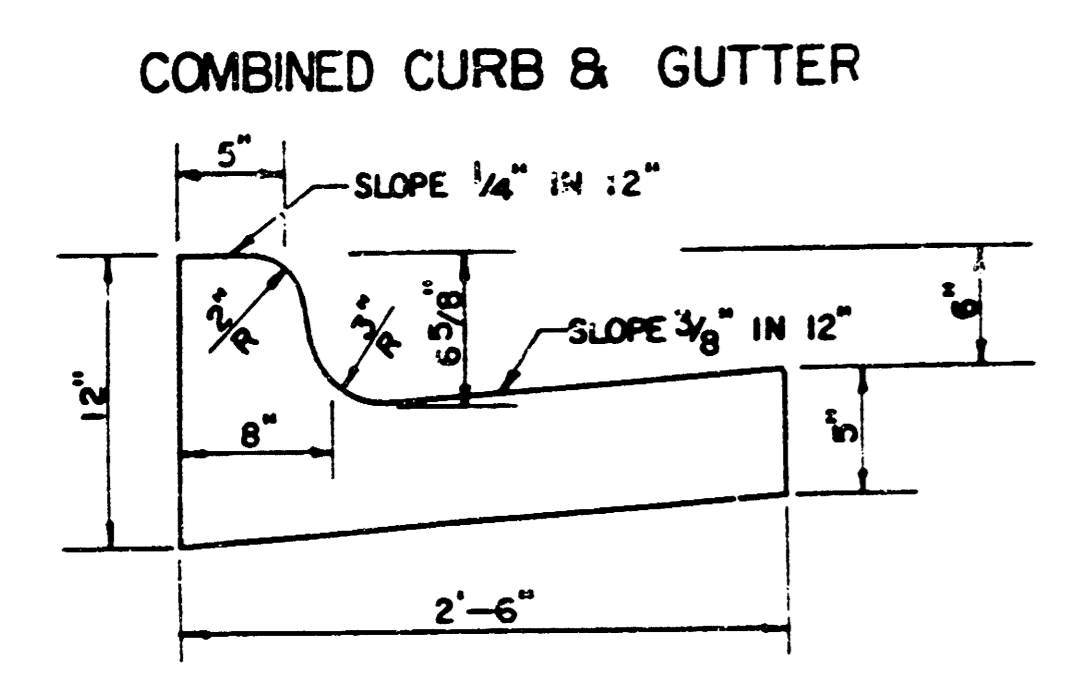
BAUGHMAN COMPANY, P.A.
SURVEYING & ENGINEERING
316-262-7271 • 315 ELLIS • WICHITA, KANSAS 67211

FILMED FROM THE BEST
AVAILABLE COPY

TYPICAL 3' PAVEMENT DETAILS



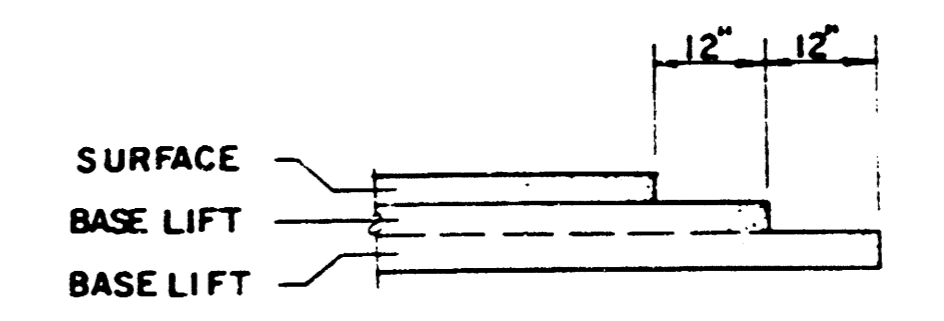
	DISTANCE FROM CENTERLINE (LT. & RT.)												
	0'	2'	4'	6'	7.5'	10'	12'	13'	15'	15.5'	15.67'	16.17'	
A: TOP OF CURBS TO TOP OF SURFACE LIFT	0.10	0.14	0.21	0.27	0.32	0.39	0.46	0.49	—	—	—	—	
B: TOP OF CURBS TO TOP OF UPPER BASE LIFT	0.27	0.31	0.38	0.44	0.49	0.56	0.63	0.66	—	—	—	—	
C: TOP OF CURBS TO TOP OF LOWER BASE LIFT	0.44	0.49	0.57	0.64	0.70	0.79	0.87	0.90	0.98	1.00	1.00	—	
D: TOP OF CURBS TO TOP OF SUBGRADE	0.69	0.73	0.80	0.87	0.93	1.01	1.08	1.12	1.19	1.21	1.21	1.23	



GENERAL NOTES

- 1) THE ASPHALTIC CONCRETE PAVEMENT BETWEEN THE COMBINED CURB AND GUTTER SHALL BE PAID AS SQUARE YARDS OF 7" ASPHALTIC CONCRETE (5" BITUMINOUS BASE).
- 2) THE BITUMINOUS BASE UNDER AND BEHIND THE COMBINED CURB AND GUTTER SHALL BE PAID AS SQUARE YARDS OF 2 1/2" BITUMINOUS BASE.
- 3) A TACK COAT OF EMULSIFIED ASPHALT (SC-1H OR CSS-1H) SHALL BE APPLIED AT AN APPROXIMATE RATE OF 0.05 GALLONS PER SQUARE YARD BETWEEN EACH LIFT OF ASPHALTIC MATERIAL.
- 4) BITUMINOUS BASE AND ASPHALTIC CONCRETE WEARING SURFACE SHALL BE PLACED WITH A LAYDOWN MACHINE HAVING AUTOMATIC CONTROLS FOR LINE AND GRADE.
- 5) CONSTRUCTION JOINTS IN EACH LIFT SHALL BE STAGGERED A MINIMUM DISTANCE OF ONE (1) FOOT FROM JOINTS IN PRECEDING LIFTS AND PLACED SO THAT A JOINT WILL BE CONSTRUCTED ON THE CENTERLINE OF THE TOP LIFT.
- 6) CONTRACTOR TO BID ONLY ONE SUBGRADE TREATMENT ALTERNATE WHEN ALTERNATES ARE PROVIDED IN THE PROPOSAL AND CONTRACT. THE ALTERNATE CHOSEN BY THE SUCCESSFUL BIDDER SHALL BE USED IN CONSTRUCTING THIS PROJECT.

TRANSVERSE CONSTRUCTION JOINTS



TRANSVERSE CONSTRUCTION JOINTS SHALL BE CONSTRUCTED IN FLEXIBLE BASE PAVEMENTS AT LOCATIONS WHERE PAVEMENT JOIN EXISTING FLEXIBLE BASE PAVEMENT AS SHOWN BY THE DETAIL. ALL COSTS ASSOCIATED WITH THE CONSTRUCTION OF THE TRANSVERSE JOINT SHALL BE INCLUDED IN THE BID PRICE FOR SQUARE YARDS 7" ASPHALTIC CONCRETE (5" BITUMINOUS BASE).

2/7 2/7
7 INCH RESIDENTIAL ASPHALTIC CONCRETE PAVEMENT WITH 5 INCH BITUMINOUS BASE
CITY OF WICHITA, KANSAS
 PROJECT NUMBER
 472-76-245-81558-000-000-001

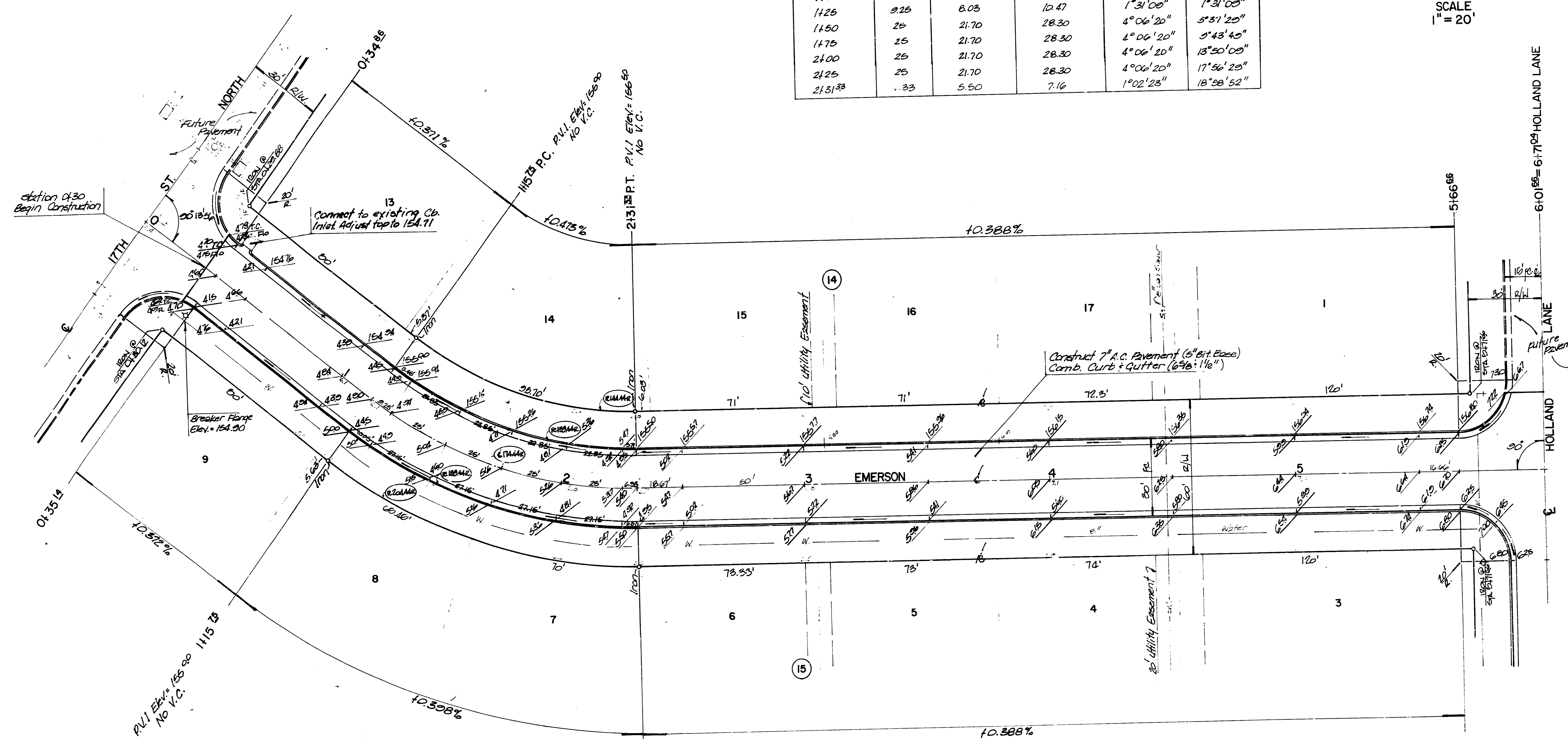
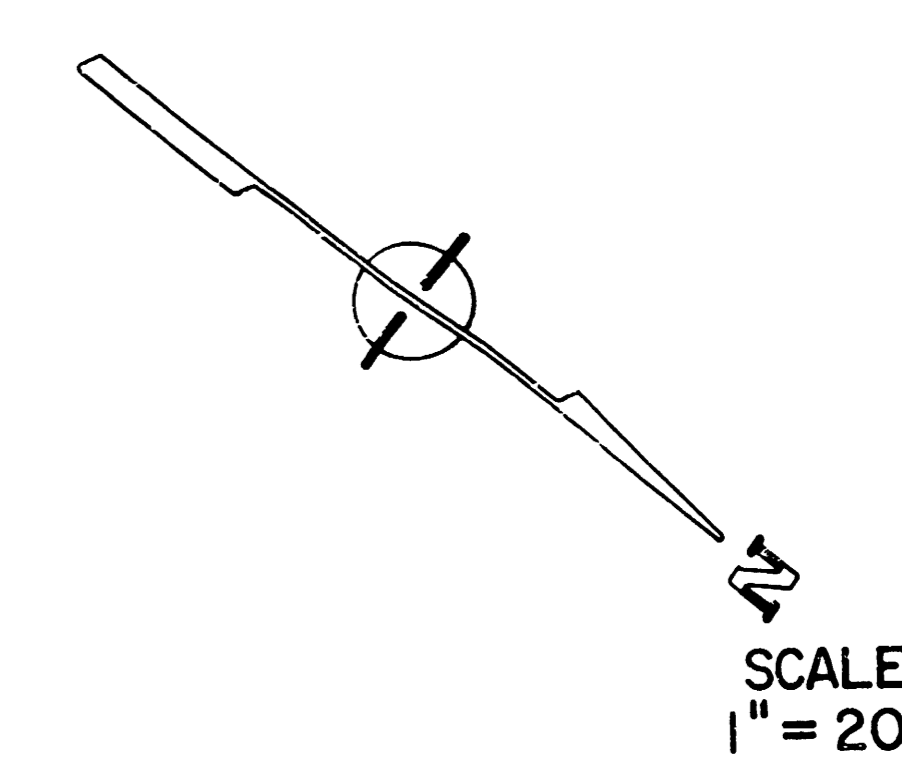
FILMED FROM THE BEST AVAILABLE COPY

Bench Marks

- 1) \square Cut 2 feet east of existing end of return on the northerly side of Northwest Parkway, located near the west end of lot 29, block 11, Westwood Heights 2nd Addition. Elevation = 154.82 City Datum.
- 2) \square Cut 3.5 feet west of end of existing curb (east of existing curb inlet) on the South side of 17th Street North, located near the N.E. Corner of Westlink 16th Addition. Elevation = 157.98 City Datum.

Curve Data Based on Center Line

Curve Data Based on Center Line					
Chord Lengths					
Station	Arc	B' Left of Face	B' Right of Face	Def Δ	Total Def Δ
1115 ⁷⁵ P.C.	—	—	—	0°00'00"	0°00'00"
1125	9.25	8.03	10.47	1°31'00"	1°31'00"
1150	25	21.70	28.30	4°06'20"	5°37'20"
1175	25	21.70	28.30	4°06'20"	9°43'40"
1200	25	21.70	28.30	4°06'20"	13°50'00"
1225	25	21.70	28.30	4°06'20"	17°56'20"
1231 ³³	6.33	5.50	7.16	1°02'23"	18°58'52"



Earthwork Quantities
 Excavation = 2236.2 Cubic Yards
 +10% = 223.8 Cubic Yards
 Total = 2462.0 Cubic Yards
 Subgrade Manipulation = 3281.2 Square Yards

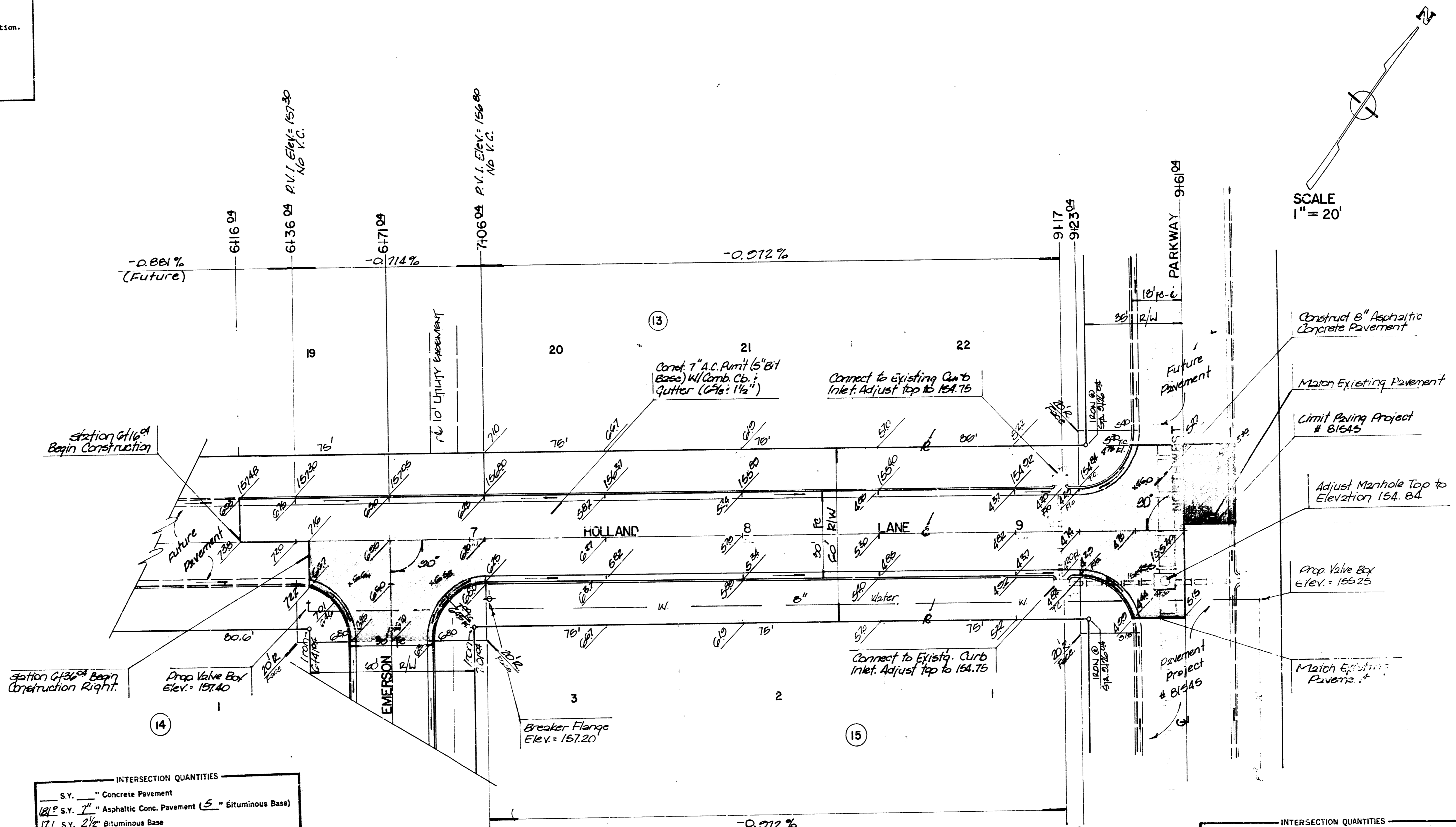
EMERSON & HOLLAND LANE

472-76-245-81558-000-000-001 3/7

FILMED FROM THE BEST AVAILABLE COPY

Bench Marks

- 1) "C" Cut 2 feet east of existing end of return on the northern side of Northwest Parkway, located near the west end of lot 29, block 11, Westwood Heights 2nd Addition. Elevation = 154.82 City Datum.
- 2) "D" Cut 5.5 feet west of end of existing curb (east of existing curb inlet) on the south side of 17th Street North, located near the N.E. Corner of Westlink 16th Addition. Elevation = 157.98 City Datum.



SCALE
1" = 20'

INTERSECTION QUANTITIES

—	S.Y.	—	Concrete Pavement
1081	S.Y.	7"	Asphaltic Conc. Pavement (S" Bituminous Base)
177	S.Y.	2 1/2"	Bituminous Base
278	L.F.		Combined Curb & Gutter
—	L.F.		Integral Curb
—	S.F.	4"	Wheelchair Ramp
—	S.F.	4"	Walk
—	C.Y.		Excavation
—	C.Y.		Compacted Fill
—	Lbs.		Reinforcing Steel
204	S.Y.		Manipulation
—	Tons		Lime or Cement
—	S.Y. V.G.	—	Concrete & —" Asphaltic Concrete Base

INTERSECTION QUANTITIES

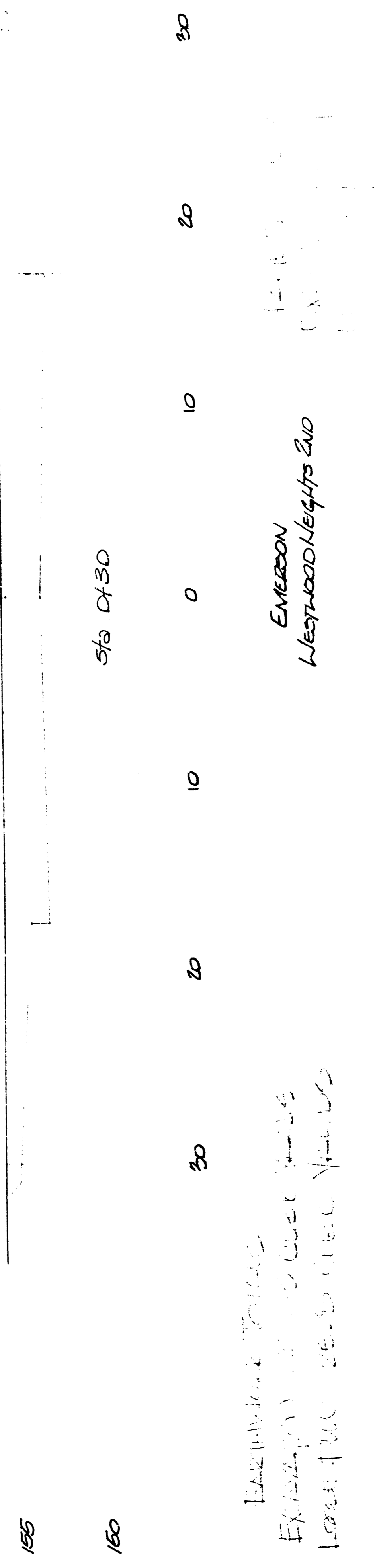
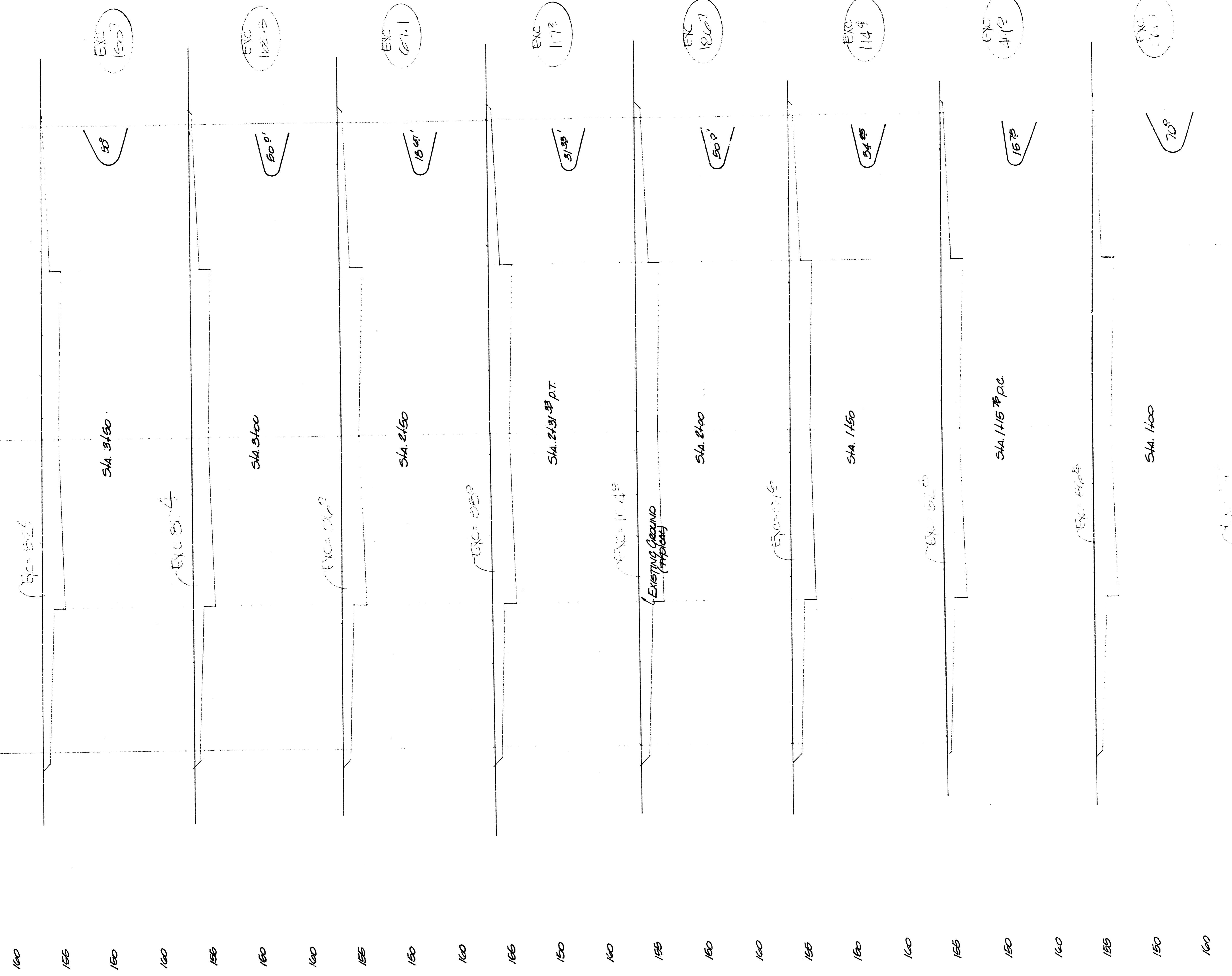
—	S.Y.	—	Concrete Pavement
246	S.Y.	6"	Asphaltic Conc. Pavement (C" Bituminous Base)
194	S.Y.	3"	Bituminous Base
653	L.F.		Combined Curb & Gutter
—	L.F.		Integral Curb
—	S.F.	4"	Wheelchair Ramp
—	S.F.	4"	Walk
—	C.Y.		Excavation
—	C.Y.		Compacted Fill
—	Lbs.		Reinforcing Steel
228	S.Y.		Manipulation
—	Tons		Lime or Cement
—	S.Y. V.G.	—	Concrete & —" Asphaltic Concrete Base

EMERSON & HOLLAND LANE

472-76-245-81558-000-000-001

FILMED FROM THE BEST AVAILABLE COPY.....

Exc 1172
Exc 1173

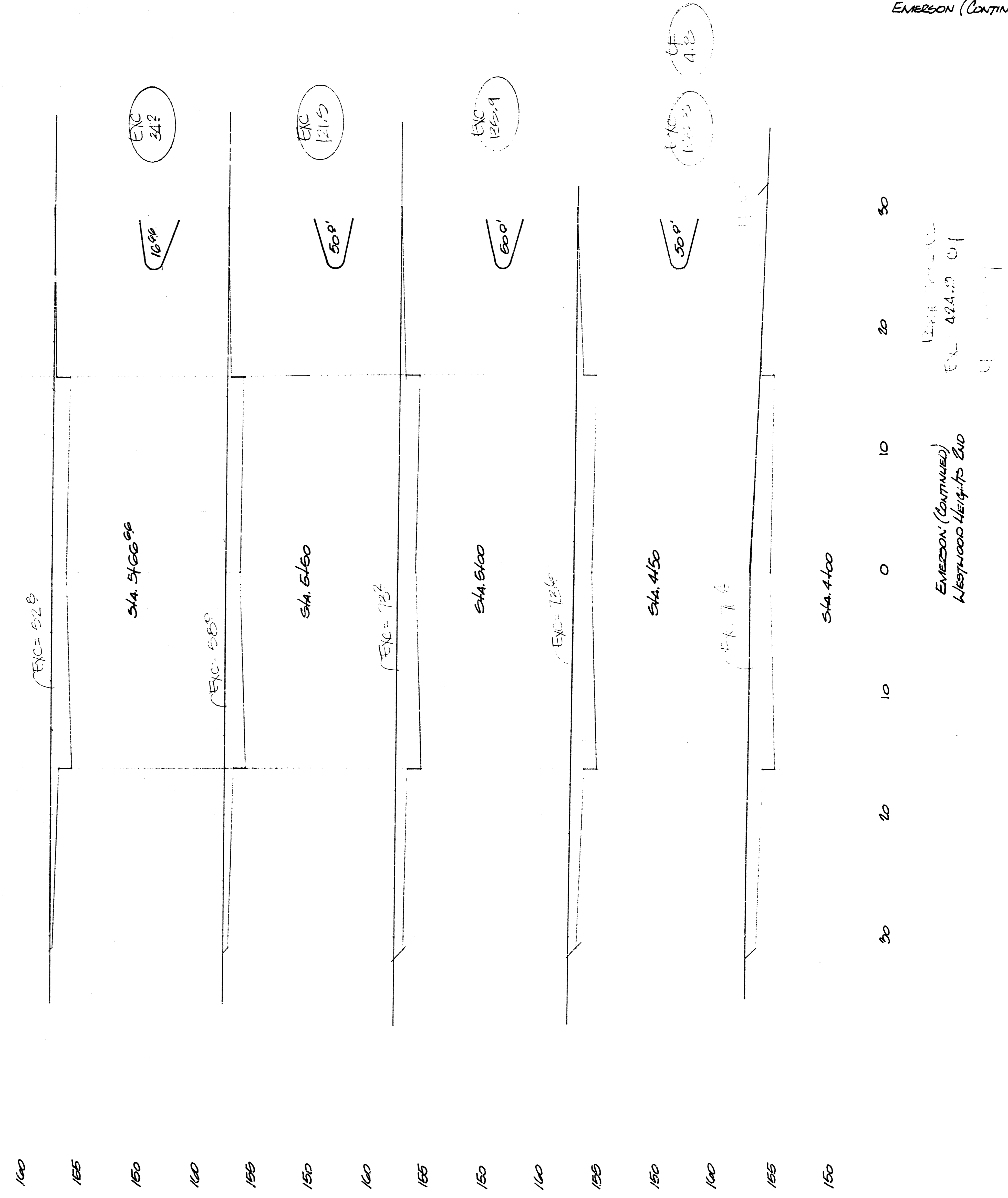


EMERSON
Westwood Heights 2nd

412-76-245-01000-000-001

FILMED FROM THE BEST AVAILABLE COPY

EARTHWORK QUANTITIES
EMERSON (CONTINUED)



472-76-245-81688-000-000-001

6/1
8/7

FILMED FROM THE BEST
AVAILABLE COPY.....

