

Street Improvements For
WESTWOOD VILLAGE 4TH ADDITION

13TH ST. NORTH COURT
 From the N.L. 13th St. North to and Including Cul-De-Sac

DORIS CIRCLE
 From the N.L. 13th St. North to and Including Cul-De-Sac

INDEX-NO.-607449

Project No.

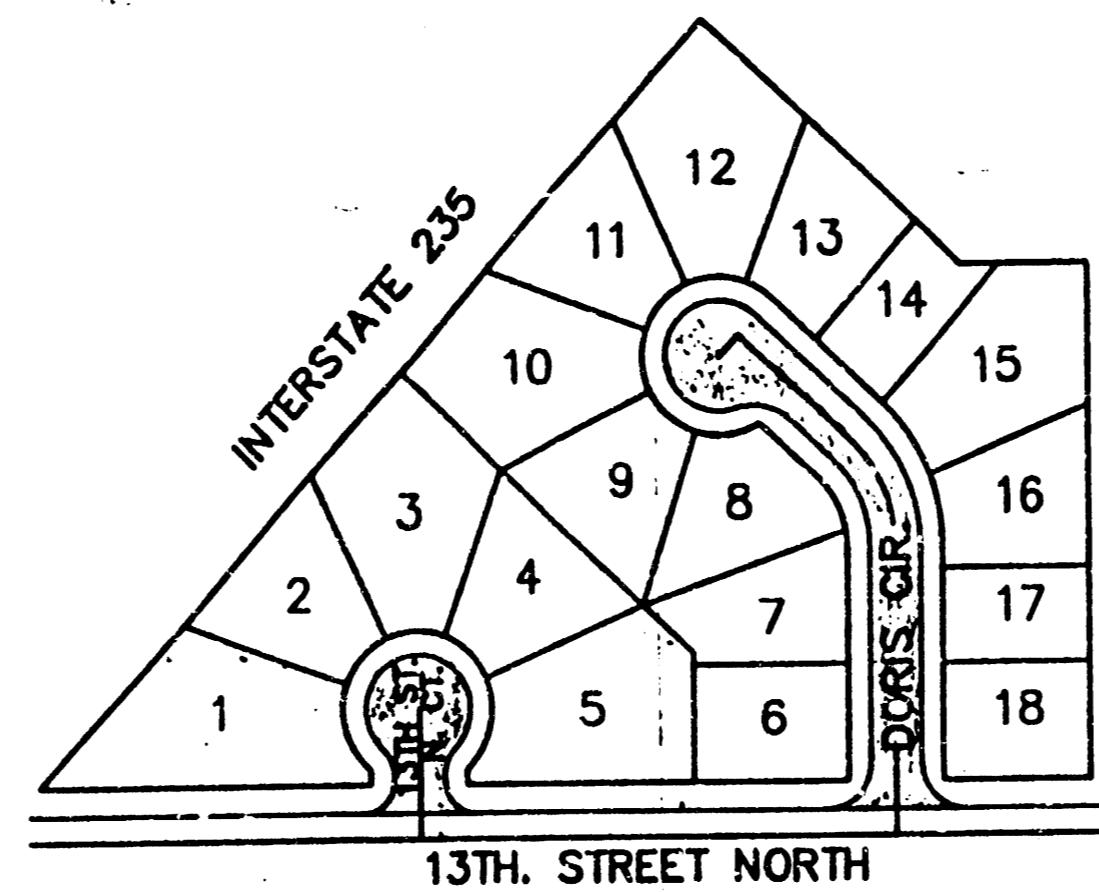
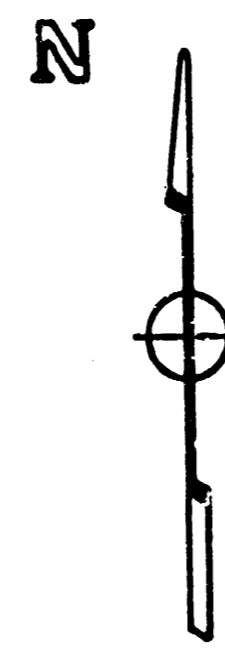
472-76-245-80001-000-000-050

CITY OF WICHITA, KANSAS

Michael E. Lindebak City Engineer

Index

- 1 TITLE SHEET
- 2 TYPICAL 36" PAVEMENT SECTION
- 3 13TH STREET NORTH COURT
- 4 DORIS CIRCLE
- 5 EARTHWORK SECTIONS
- 6 EARTHWORK SECTIONS



LOCATION MAP

General Notes

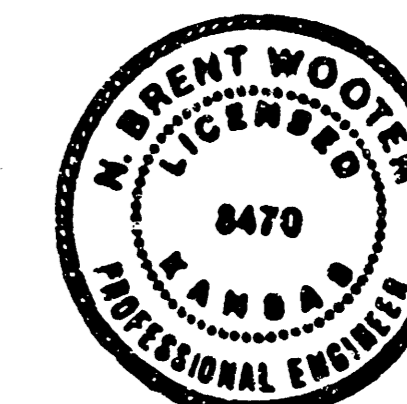
1. Utility service lines, poles, valve boxes, meters, and etcetera are to be adjusted as necessary by others prior to construction unless the plans specifically call for their adjustment by the Contractor or unless the plans specifically identify a utility to be adjusted by its owner during construction. Existing utilities and their location, as shown on the plans, represent the best information obtainable for design. The contractor will be required to work around existing utilities within the right-of-way which do not conflict with proposed construction.
2. This project includes a certain amount of roll type curb construction. Roll Curbs shall be depressed through all driveway openings when such drives are constructed as a part of the project.
3. The Contractor shall be responsible for preserving property irons. The Contractor will be required to re-establish any property irons which are damaged or destroyed by his construction operations. Such irons shall be re-established by a licensed land surveyor in accordance with state laws.

APPROVED AS NOTED
 By CITY ENGINEER OF WICHITA

Sanitary Sewers _____
 Storm Sewers _____
 Driveway Approaches _____
 Water Main _____
 Paving URH 1/27/89

NOTE TO CONTRACTOR

INSPECTION AND TESTING FOR THIS PROJECT IS TO BE PROVIDED BY A LICENSED CONSULTING ENGINEERING FIRM UNDER CONTRACT WITH THE OWNER/DEVELOPER. SAID INSPECTION IS TO BE IN ACCORDANCE WITH THE CITY OF WICHITA STANDARD CONSTRUCTION ENGINEERING PRACTICES AND CERTIFIED BY A LICENSED PROFESSIONAL ENGINEER. NO WORK SHALL BE PERFORMED IN DEDICATED EASEMENTS OR THE PUBLIC RIGHT-OF-WAY BY THE CONTRACTOR WITHOUT SUCH INSPECTION NOR SHALL ANY WORK BE COMMENCED IN DEDICATED EASEMENTS OR PUBLIC RIGHT-OF-WAY WITHOUT WRITTEN AUTHORIZATION BY THE CITY ENGINEER.

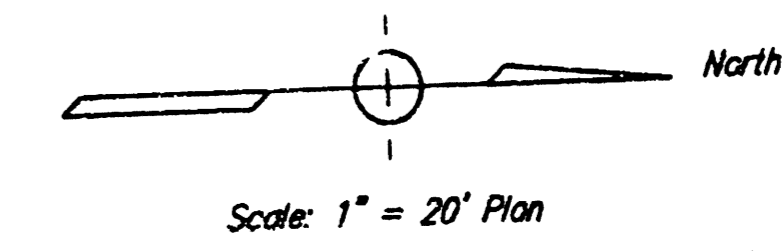


Revised as built 7-17-89 TCR (Sheet 2-4)
BAUGHMAN COMPANY P. A.
 SURVEYING & ENGINEERING
 316/262-7271 • 315 ELLIS • WICHITA, KANSAS 67211

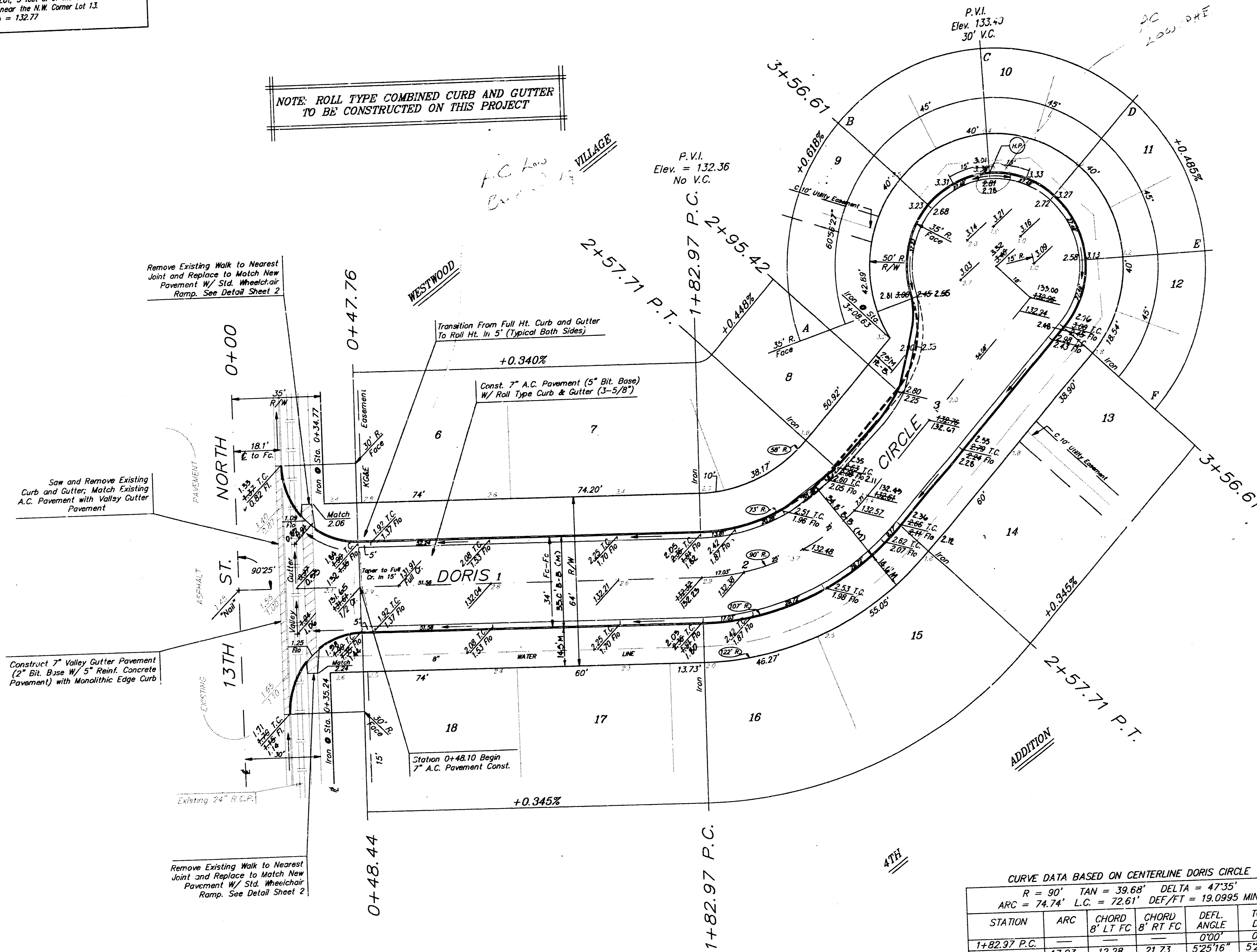
FILMED FROM THE BEST
 AVAILABLE COPY

BENCH MARK: Chiseled Square on Top of Inlet Located 264 feet West of the S.E. Corner of Lot 18, Westwood Village with Adn., Elev = 131.17

BENCH MARK: Chiseled Square on the West Edge of Concrete Parking Lot, 5 feet S. of the S.E. Corner of Corport near the N.W. Corner Lot 13, Elevation = 132.77



NOTE: ROLL TYPE COMBINED CURB AND GUTTER TO BE CONSTRUCTED ON THIS PROJECT



CURVE DATA BASED ON CENTERLINE DORIS CIRCLE

$R = 90'$ $TAN = 39.68'$ $DELTA = 47'35''$
 $ARC = 74.74'$ $L.C. = 72.61'$ $DEF/FT = 19.0995$ MIN.

STATION	ARC	CHORD B' LT FC	CHORD B' RT FC	DEFL. ANGLE	TOTAL DEFL.
1+82.97 P.C.	—	—	—	0'00"	0'00"
2+00	17.03	12.28	21.73	5'25'16"	5'25'16"
2+25	25.00	18.00	31.84	7'57'29"	13'22'45"
2+50	25.00	18.00	31.84	7'57'30"	21'20'15"
2+57.71 P.T.	7.71	5.57	9.85	2'27'15"	23'47'30"

Revised as built July 17, 1985 TCR

DORIS CIRCLE
 FROM THE N.L. 13TH ST. N. TO AND INCL. CUL-DE-SAC

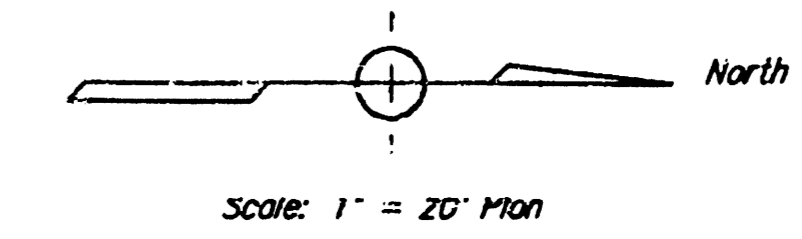
BAUGHMAN COMPANY P. A.
 SURVEYING & ENGINEERING
 316/262-7271 • 315 ELLIS • WICHITA, KANSAS 67211

PROJECT NUMBER
472-76-245-60001-000-000-050

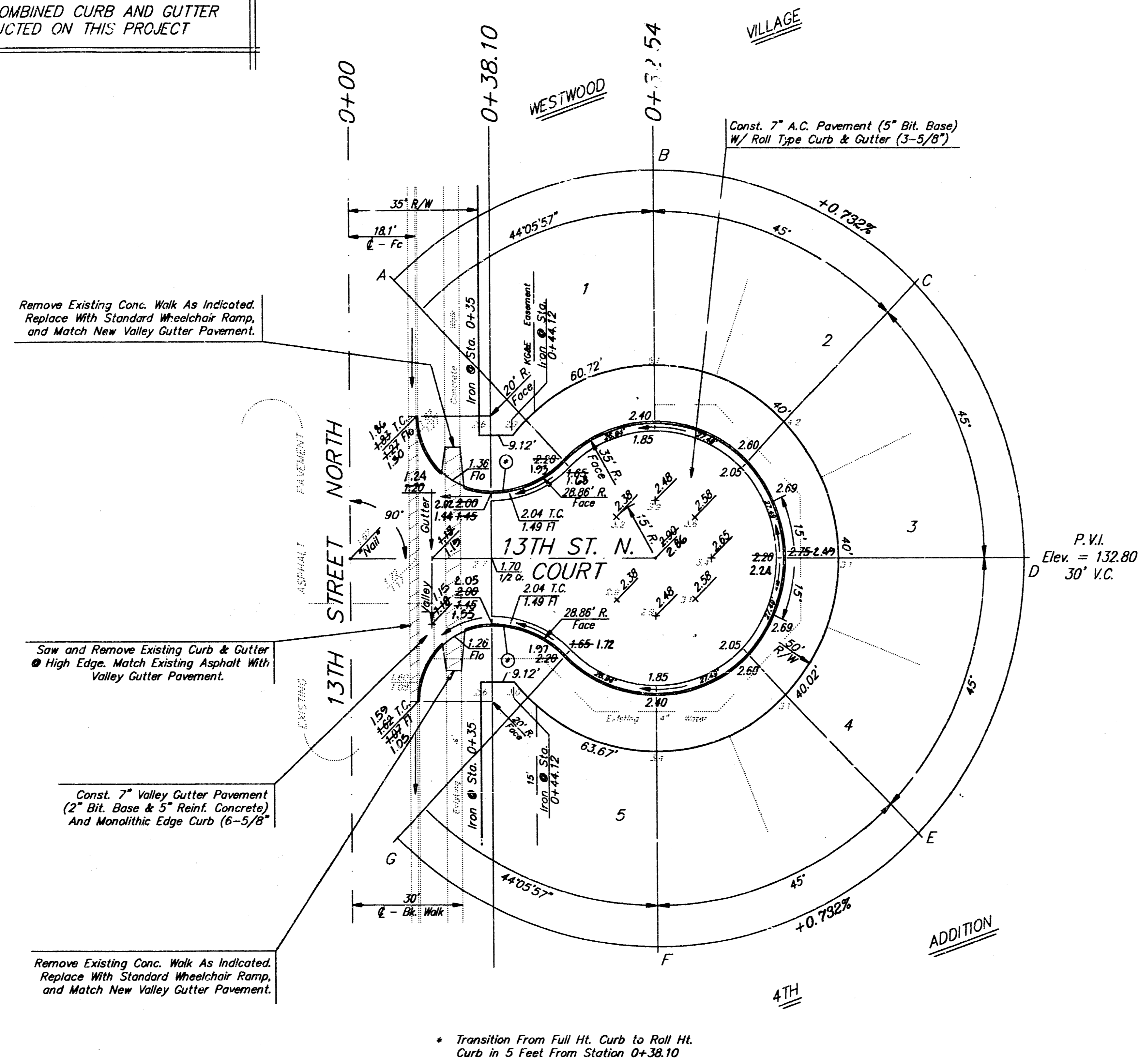
DESIGN DRAWN APPROVED DATE SCALE SHEET 4 OF 6 REV. 2/3

BENCH MARK: Chiseled Square on Top of Inlet Located
264 feet West of the S.E. Corner of Lot 18,
Westwood Village 4th Addn., Elev = 131.17

BENCH MARK: Chiseled Square on the West Edge of Concrete
Parking Lot, 5 feet S. of the S.E. Corner of
Carpport near the N.W. Corner Lot 13,
Elevation = 132.77



NOTE: ROLL TYPE COMBINED CURB AND GUTTER
TO BE CONSTRUCTED ON THIS PROJECT



Remove Existing Conc. Walk As Indicated.
Replace With Standard Wheelchair Ramp,
and Match New Valley Gutter Pavement.

Saw and Remove Existing Curb & Gutter
High Edge. Match Existing Asphalt With
Valley Gutter Pavement.

Const. 7" Valley Gutter Pavement
(2" Bit. Base & 5" Reinf. Concrete)
And Monolithic Edge Curb (6-5/8")

Remove Existing Conc. Walk As Indicated.
Replace With Standard Wheelchair Ramp,
and Match New Valley Gutter Pavement.

* Transition From Full Ht. Curb to Roll Ht.
Curb in 5 Feet From Station 0+38.10

Revised as built 7-17-89 TCR

13TH STREET NORTH COURT			
FROM THE N.L. 13TH ST. N. TO AND INCL. CUL-DE-SAC			
BAUGHMAN COMPANY P. A.			REV.
SURVEYING & ENGINEERING			
316/262-7271 • 315 ELLIS • WICHITA, KANSAS 67211			
PROJECT NUMBER			
472-76-245-80001-000-000-050			
DESIGN	DRAWN	APPROVED	DATE
C. Bohm	C. Bohm	NEW	Jan. 1989
			SCALE
			1" = 20'
			SHEET
			3
			OF
			6 3/3