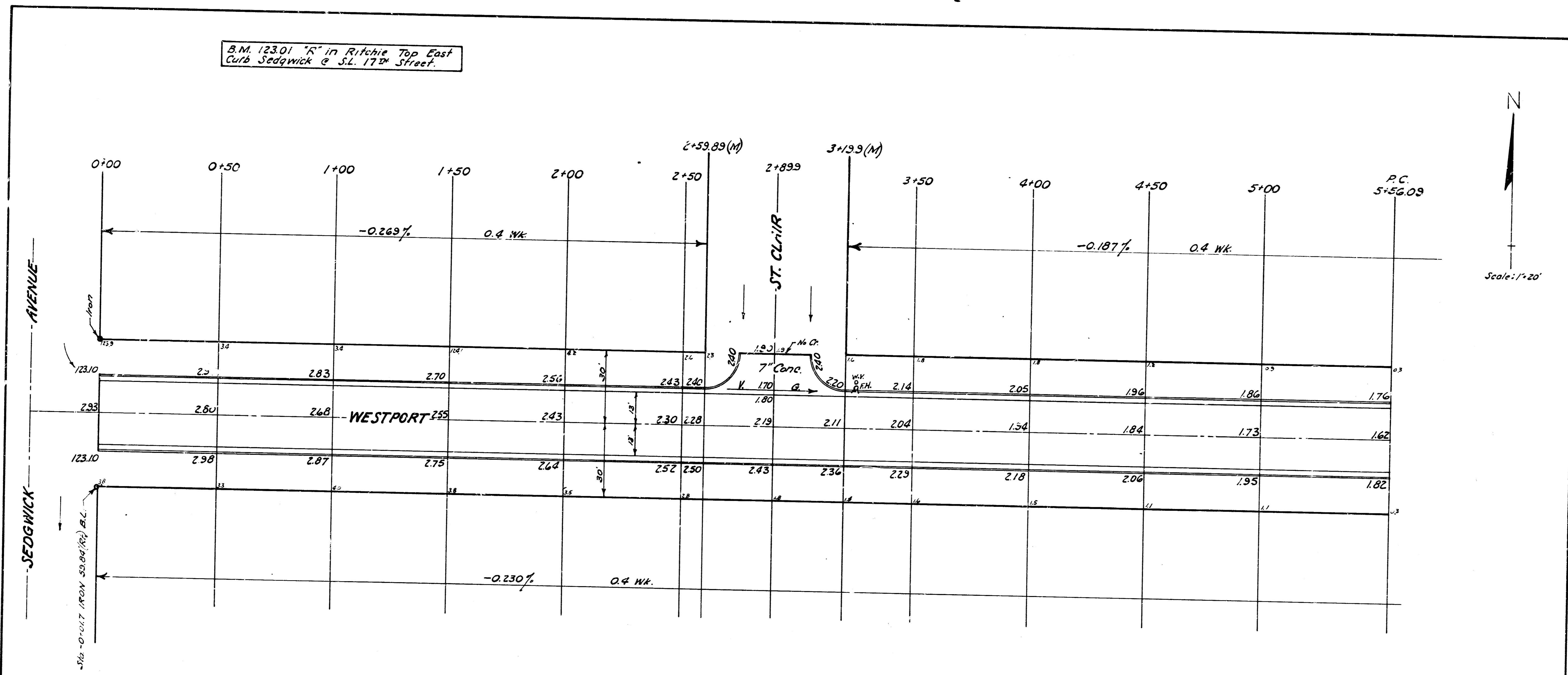
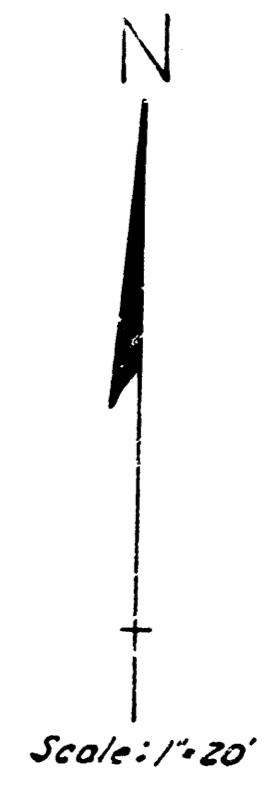


B.M. 123.01 "R" in Ritchie Top East
Curb Sedgwick & S.L. 17th Street.

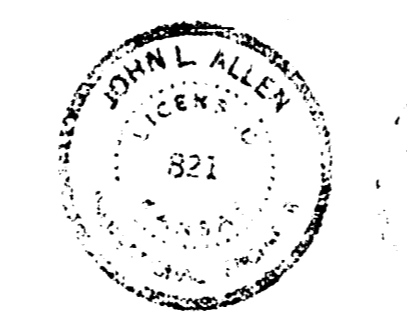


Shows 1/4" = 1' 00"
 1/4" = 1' 00"
 1/4" = 1' 00"
 1/4" = 1' 00"



PROJ. C13-79

PROPERTY		CITY	
EXC.	COMP. FILL	EXC.	COMP. FILL
+10% 731 Cu Yds.	82 Cu Yds.	30 Cu Yds.	2 Cu Yds.
73	9	3	
Totals 804 Cu Yds.	90 Cu Yds.	33 Cu Yds.	2 Cu Yds.



WESTPORT	WESTPORT
FROM N.L. 17 TH STREET TO E.L. LOT 5, BLK. 3, WOMERS 6 TH ADD'N.	FROM E.L. SEDGWICK AVE. TO E.L. LOT 5, BLK. 3, WOMERS 6 TH ADD'N.
6-2-30 Asph. Conc.	6-2-30 Asph. Conc.
B.E. SMITH CITY ENGINEER CITY OF WICHITA KANSAS Date: MAY 1936	B.E. SMITH CITY ENGINEER CITY OF WICHITA KANSAS Date: MAY 1937
Proj. No. C13-80	Proj. No. C13-79