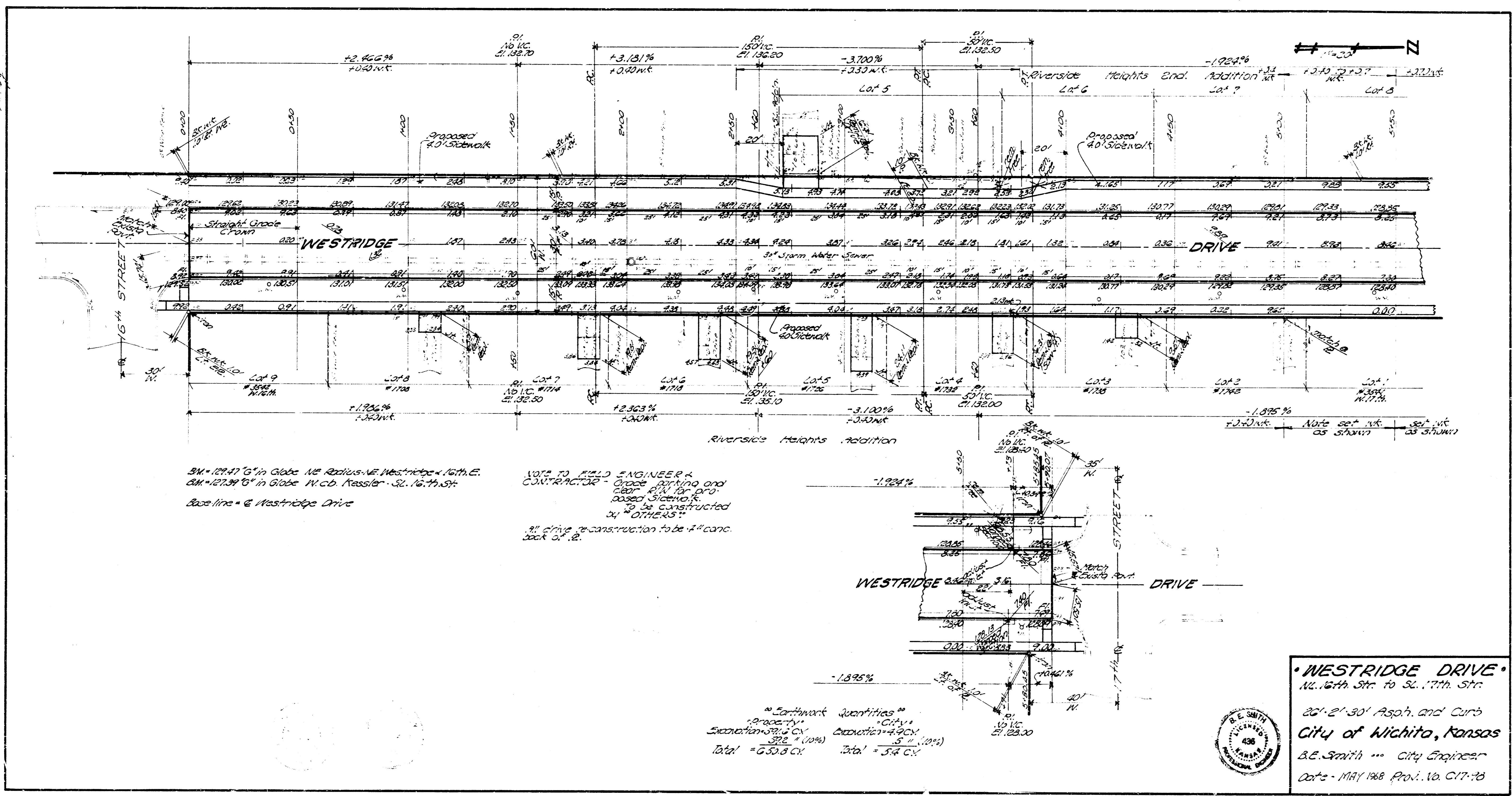
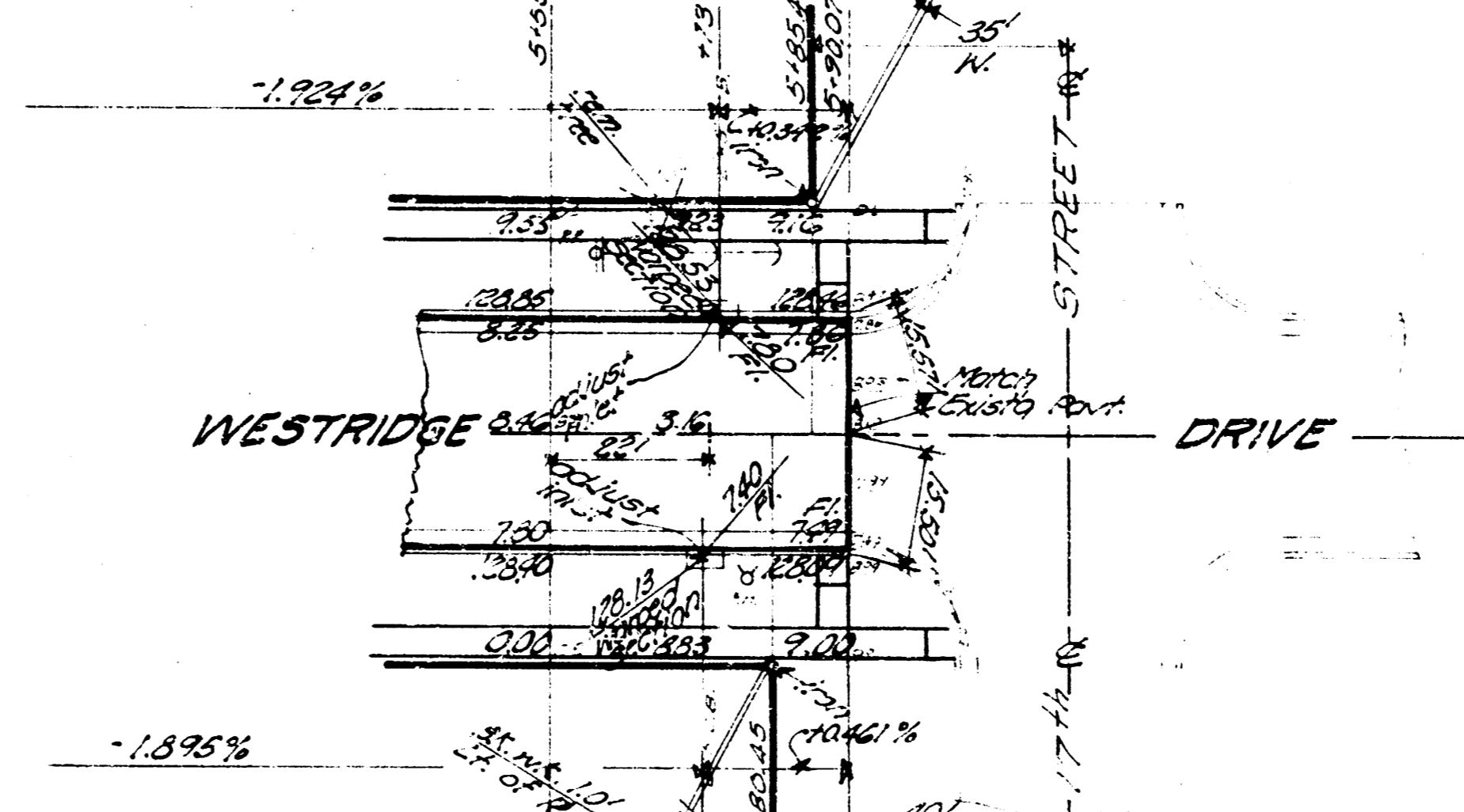


1/2" = 1' HORIZ.  
1/4" = 1' VERT.



BM = 127.47' G in Globe NE Radius - W. Westridge - North E.  
 CM = 127.94' G in Globe N. Co. Kessler - S. 16th St.  
 Base line = @ Westridge Drive

NOTE TO FIELD ENGINEER & CONTRACTOR:  
 Grade printing and clear PIN for proposed sidewalk to be constructed as shown.  
 If drive reconstruction to be 7" conc. back of P.



Earthwork Quantities  
 Excavation = 372' (10%)  
 Total = 650.8 CY  
 City Excavation = 4.9 CY  
 Total = 5.4 CY



**WESTRIDGE DRIVE**  
 N. 16th St. to S. 17th St.  
 20' - 2' - 30" Asphalt and Curb  
 City of Wichita, Kansas  
 B.E. Smith - City Engineer  
 Date - MAY 1988 Proj. No. C17-18