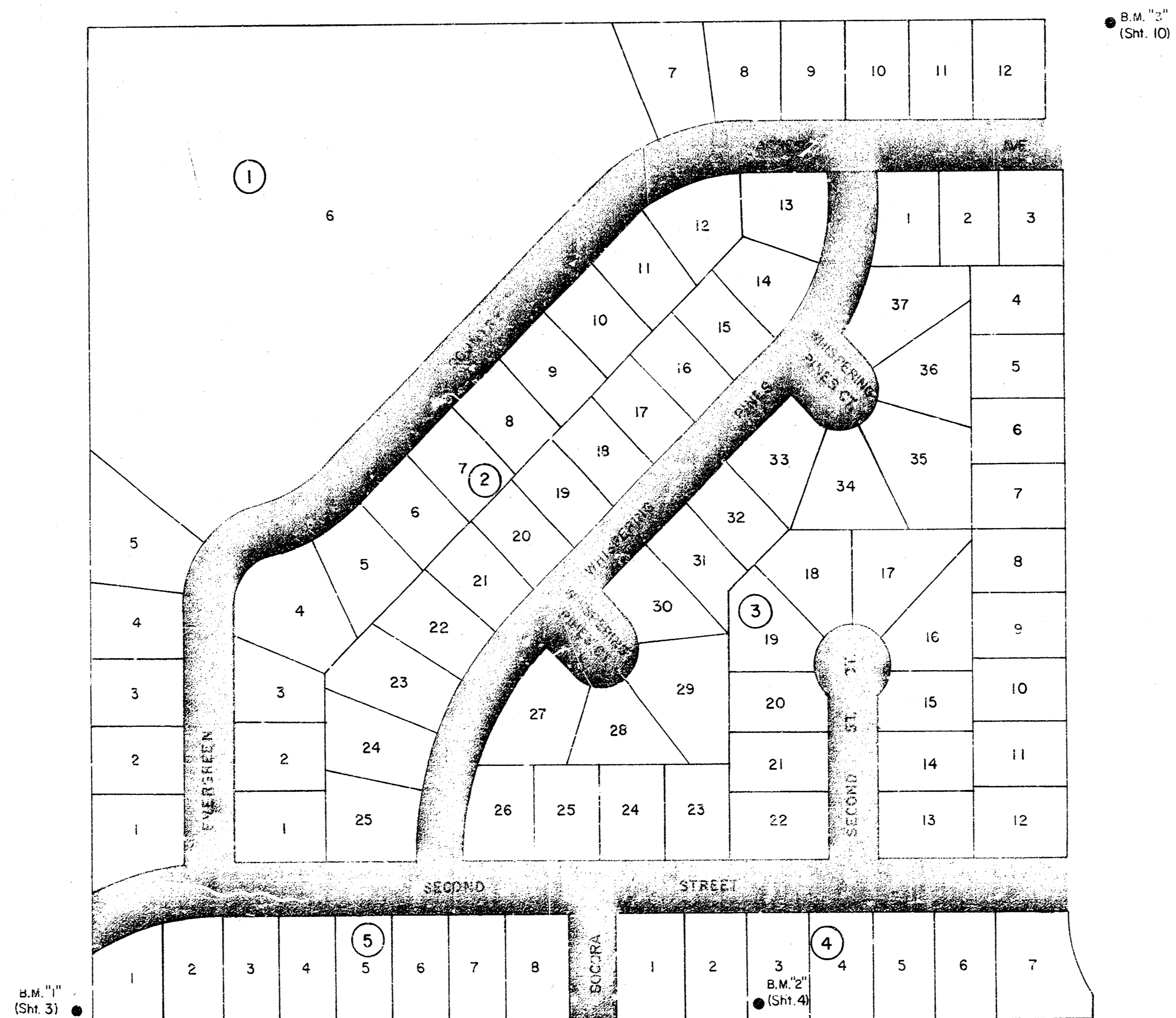


STREETS IN WHISPERING PINES ESTATES

PROJECT NO.

472-76-245-80830-000-000-001

SECOND ST. - E.L. OF WHISPERING PINES ESTATES TO W.L. WOODCHUCK LANE
 SECOND ST. - N.L. SECOND ST. TO & INCLUDING CUL-DE-SAC
 EVERGREEN & COUNTRY ACRES AVE. - N.L. SECOND ST. TO W.L. WOODCHUCK LANE
 WHISPERING PINES - N.L. SECOND ST. TO S.L. COUNTRY ACRES AVE.
 WHISPERING PINES CT. - SERVING LOTS 27 THRU 30, BLK. 3 WHISPERING PINES ESTATES
 WHISPERING PINES CT. - SERVING LOTS 33 THRU 37, BLK. 3 WHISPERING PINES ESTATES
 SOCORA - S.L. OF WHISPERING PINES ESTATES TO S.L. SECOND ST.



INDEX TO DRAWINGS

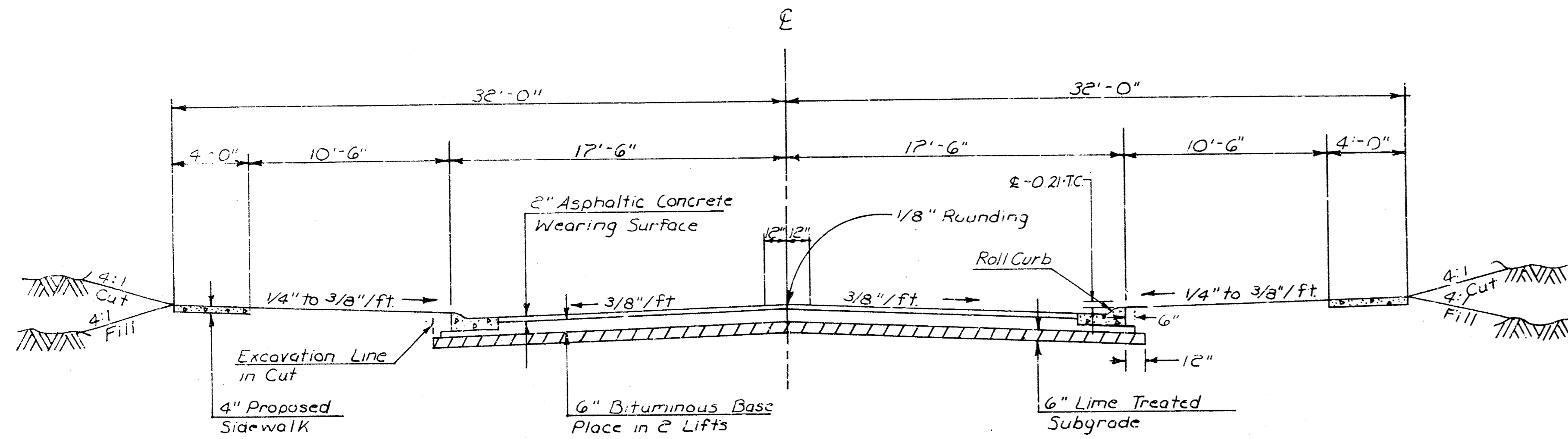
SHEET NO.	DESCRIPTION
1	TITLE
2	PAVING DETAILS
3-5	SECOND STREET
6	SECOND STREET COURT
7-10	EVERGREEN & COUNTRY ACRES AVE.
11-13	WHISPERING PINES
14	SOCORA
15	CURVE LAYOUT & STAKING INFORMATION
16-23	CROSS SECTIONS

CITY OF WICHITA, KANSAS

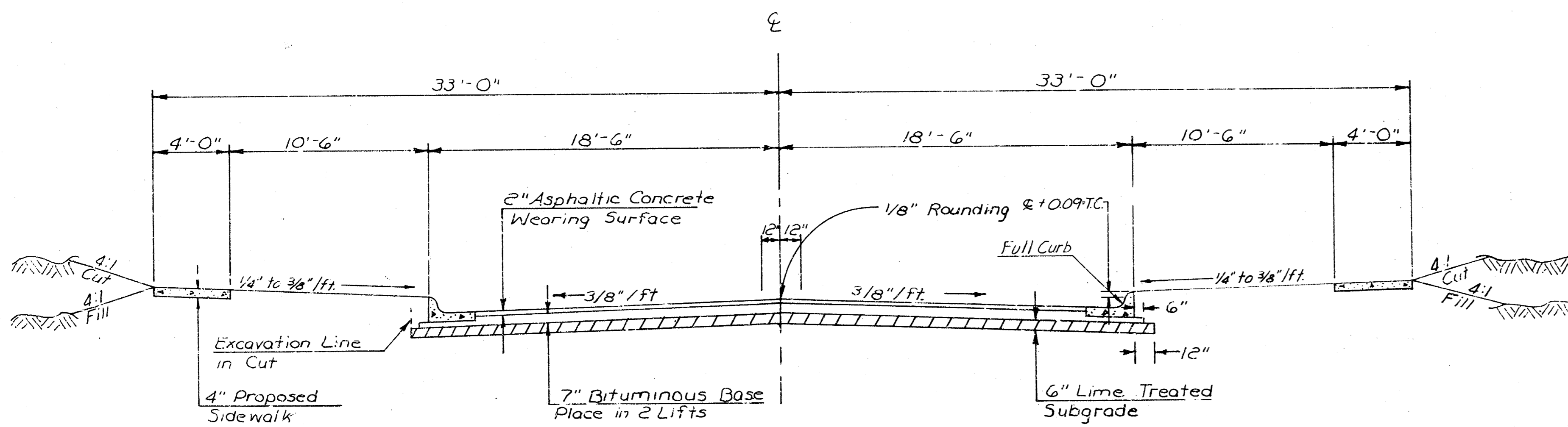


Van Doren - Hazard - Stallings
 Architects • Engineers • Planners
 Topeka Wichita Minneapolis

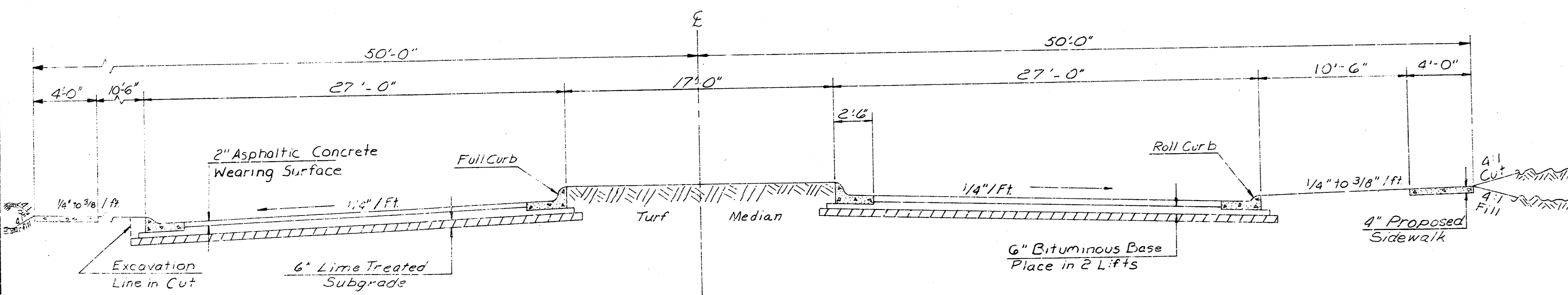
Sheet 1
 of 7



TYPICAL 35' B. B. SECTION



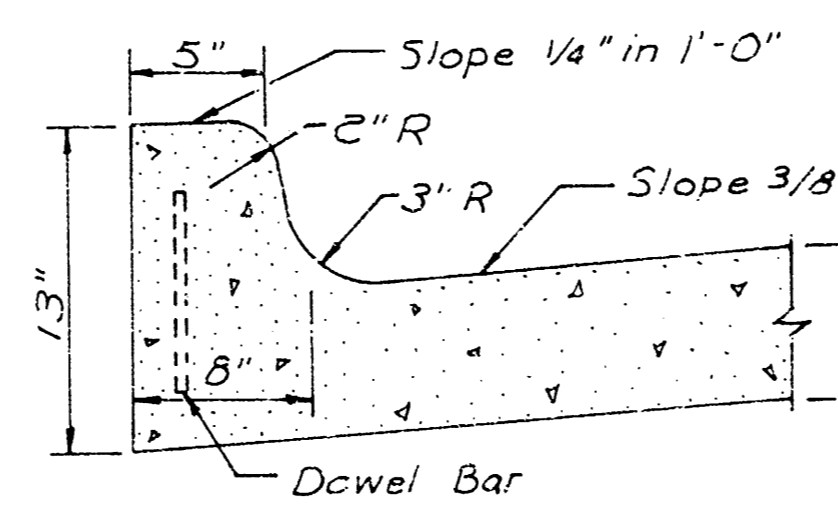
TYPICAL 37' B. B. SECTION
(SECOND STREET)



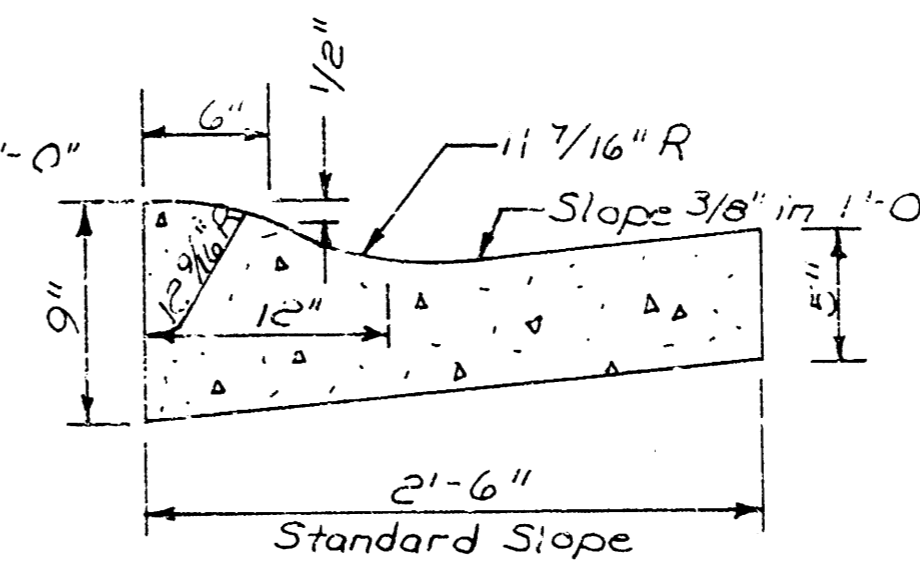
TYPICAL 71' MEDIAN SECTION

GENERAL NOTES

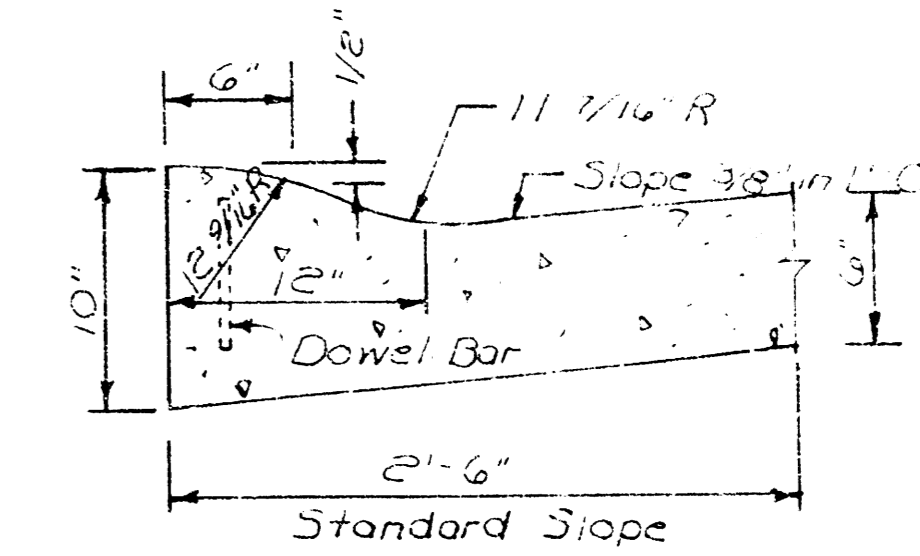
1. A Tack Coat of Emulsified Asphalt (SS - 1H) shall be applied at an approximate rate 0.05 gallons per square yard between lifts of asphaltic materials when ordered by the Engineer. Tack Coat will not be paid for directly and shall be considered as an subsidiary to price bid for Asphaltic Pavement.
2. Bituminous Base and Asphaltic Concrete Wearing Surface shall be placed with a lay-down machine having automatic controls for crown and grade. Construction Joints in each lift shall be staggered a minimum distance of 1 foot with joints in preceding lifts and such that a joint will be constructed on the pavement centerline in the top lift.
3. The A.C. Pavement between combined curb and gutter shall be paid as square yards 8" or 9" A.C. Pavement (6" or 7" Bituminous Base). The Bituminous Base under the combined curb and gutter shall be paid as square yards 3" Bituminous Base.
4. Sidewalks indicated on the typical section are for location on that section. SIDEWALKS SHALL NOT BE CONSTRUCTED ON THIS PROJECT.
5. Contraction Joints may be constructed in Integral Curb by sawing with an approved concrete saw. The saw shall extend through the curb to the pavement. Sawed Contraction Joints shall have a maximum spacing of 10 feet.
6. Integral Curb shall be tied to the pavement base with short deformed Dowel Bars spaced at 2' - 0" intervals. These Dowel Bars shall not be less than 1/2" or more than 3/4" in diameter.
7. Transition Curb shall be paid as Roll-Type Combination Curb and Gutter.
8. Sidewalk grades at right of ways are 0.3 feet above top of curb.
9. No more than four (4) 18 foot driveways shall be charged to the project without approval from the Construction Chief Engineer.



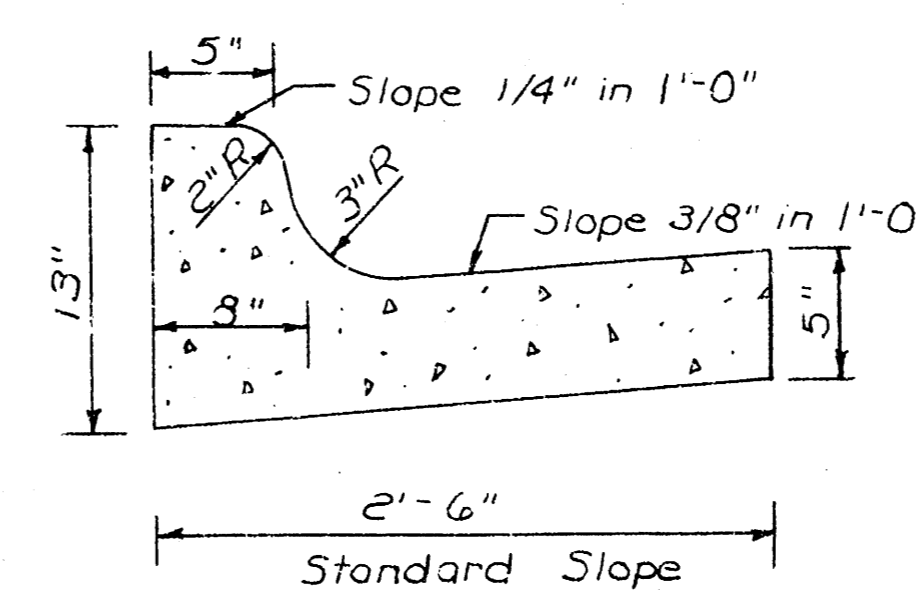
STANDARD INTEGRAL CURB



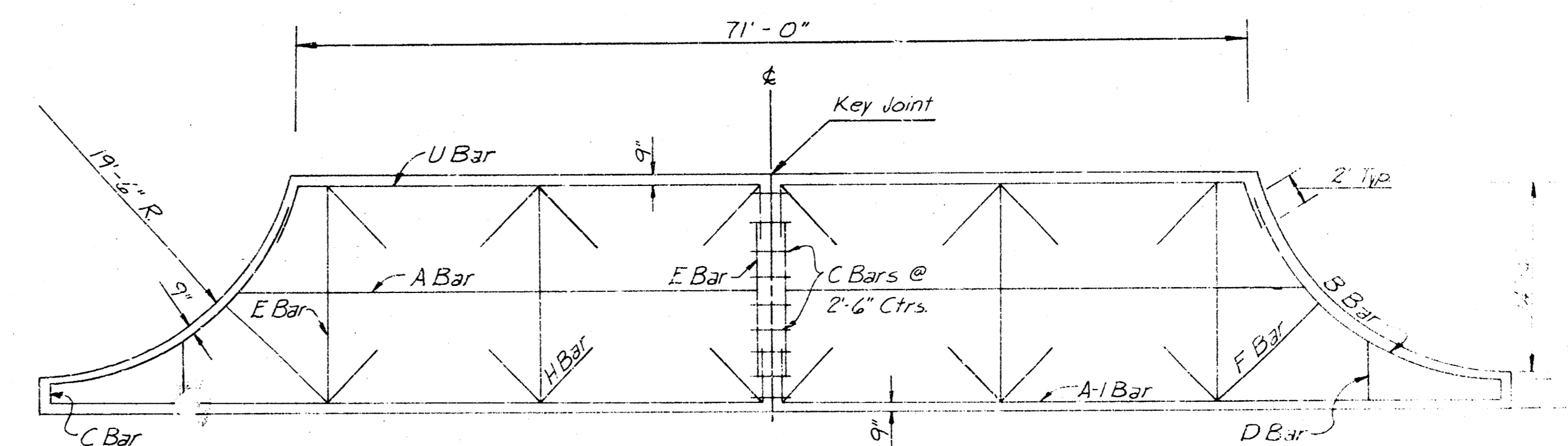
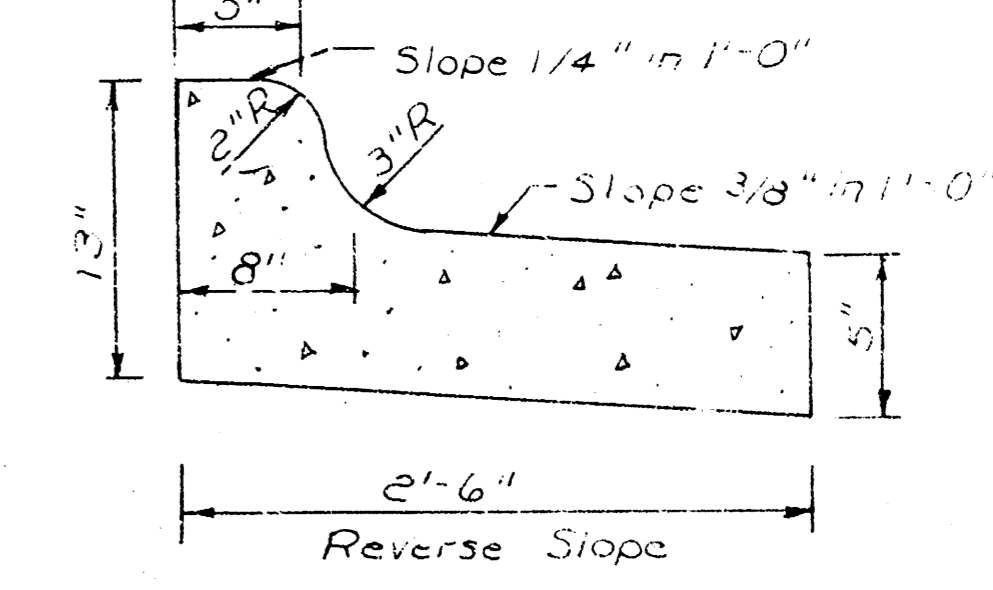
ROLL TYPE CURB & GUTTER



STANDARD INTEGRAL
ROLL TYPE CURB & GUTTER

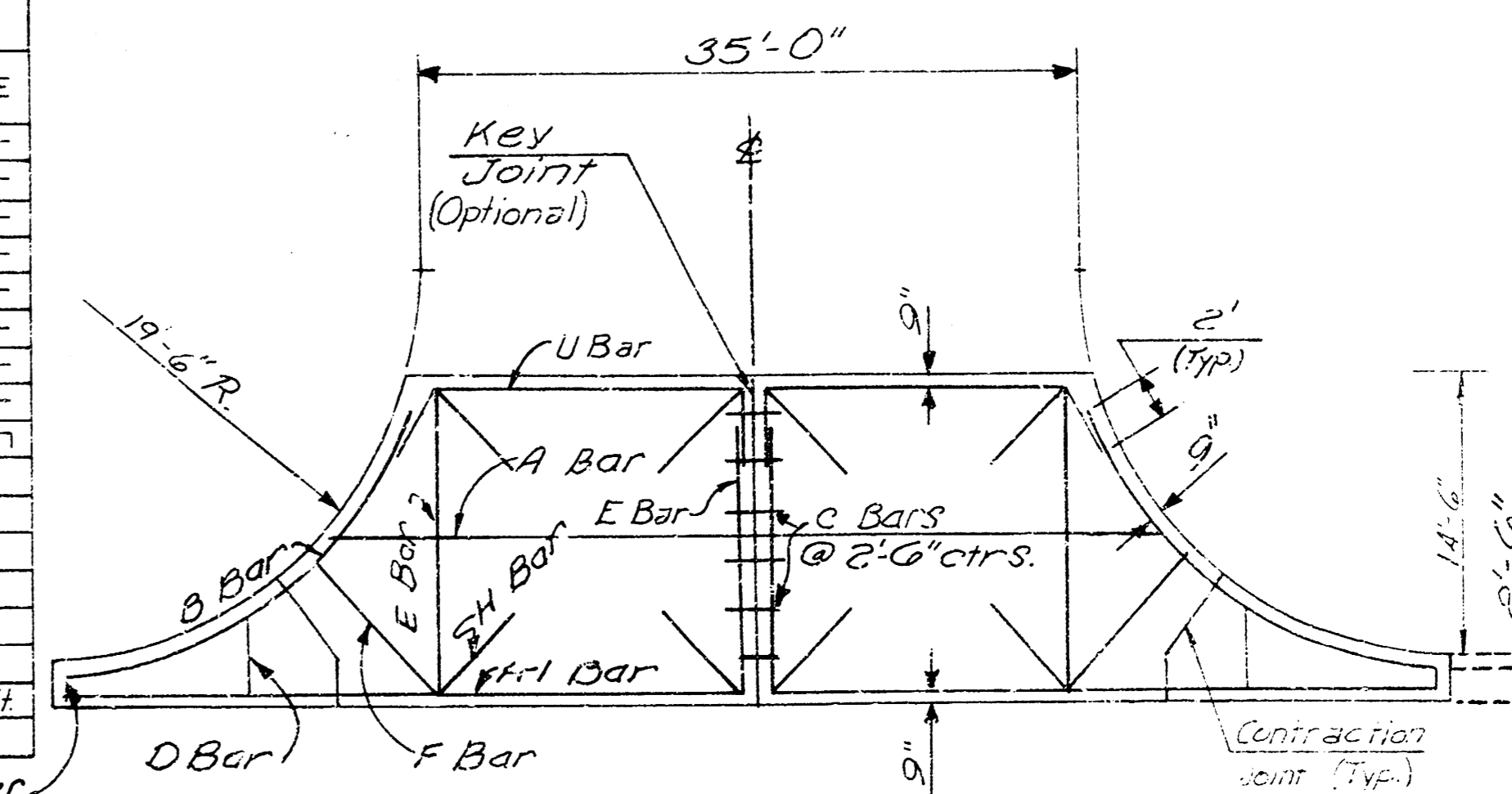


COMBINED CURB & GUTTER



TYPICAL REINFORCING FOR VALLEY GUTTER
(6" CONCRETE SLAB - 2" ASPHALTIC CONCRETE BASE)

MARK	SIZE	W=35'-0"		W=71'-0"		SHAPE
		NO.	LENGTH	NO.	LENGTH	
A	6	2	22'-6"	2	40'-0"	
A-1	4	4	20'-0"	2	54'-0"	
B	6	2	24'-0"	2	24'-0"	
C	4	8	2'-0"	11	2'-0"	
D	6	2	5'-0"	2	5'-0"	
E	6	4	16'-0"	6	16'-6"	
F	6	2	10'-0"	2	11'-0"	
H	6	8	6'-0"	16	6'-0"	
U	6	2	24'-0"	2	44'-0"	
# 6 TOTAL			363'-6" Lin. Ft.		551'-6" Lin. Ft.	
# 4 TOTAL			16'-0"		22'-0"	



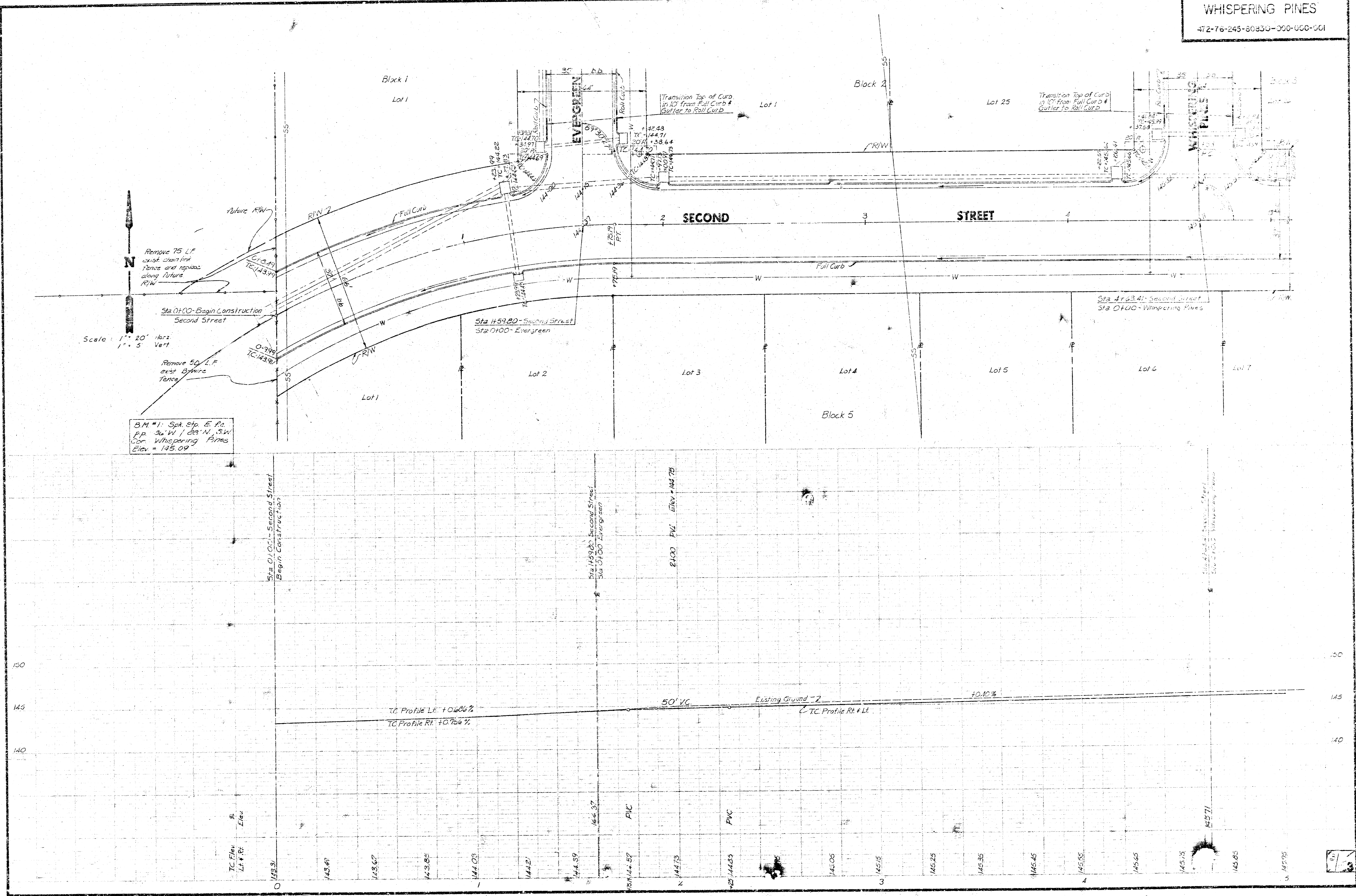
TYPICAL REINFORCING FOR VALLEY GUTTER
(6" CONCRETE SLAB - 2" ASPHALTIC CONCRETE BASE)
(* 3" ASPHALTIC CONCRETE BASE FOR 2ND STREET COURT)



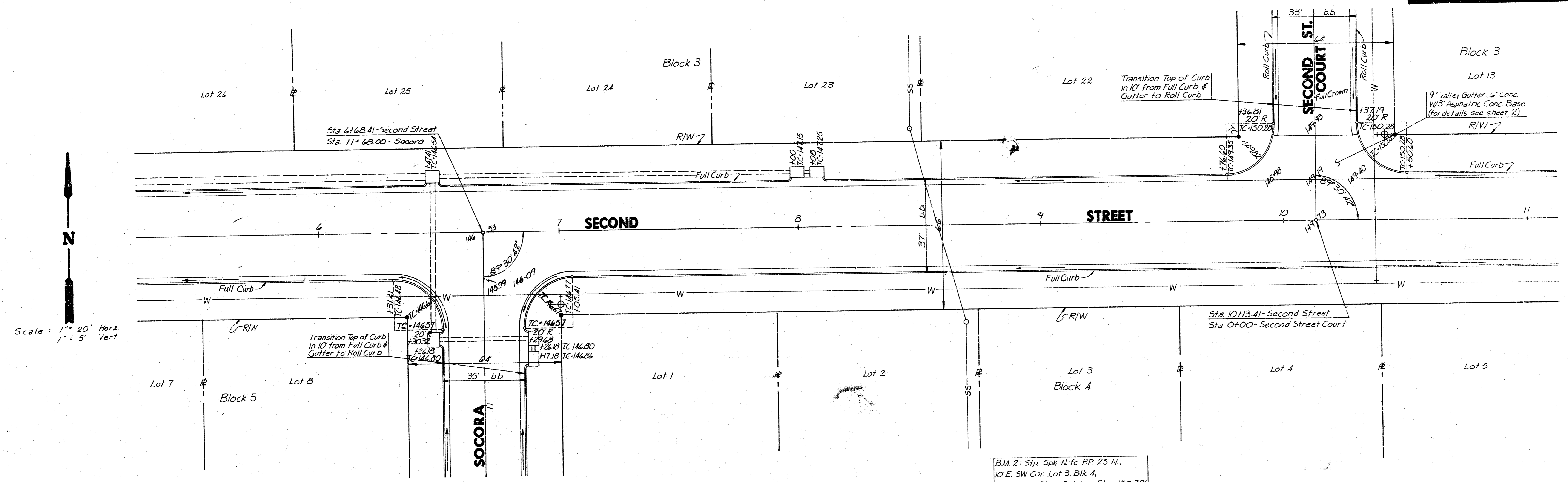
Van Doren - Hazard - Stallings

Architects • Engineers • Planners
Topeka Wichita Minneapolis

Sheet 2
of 7

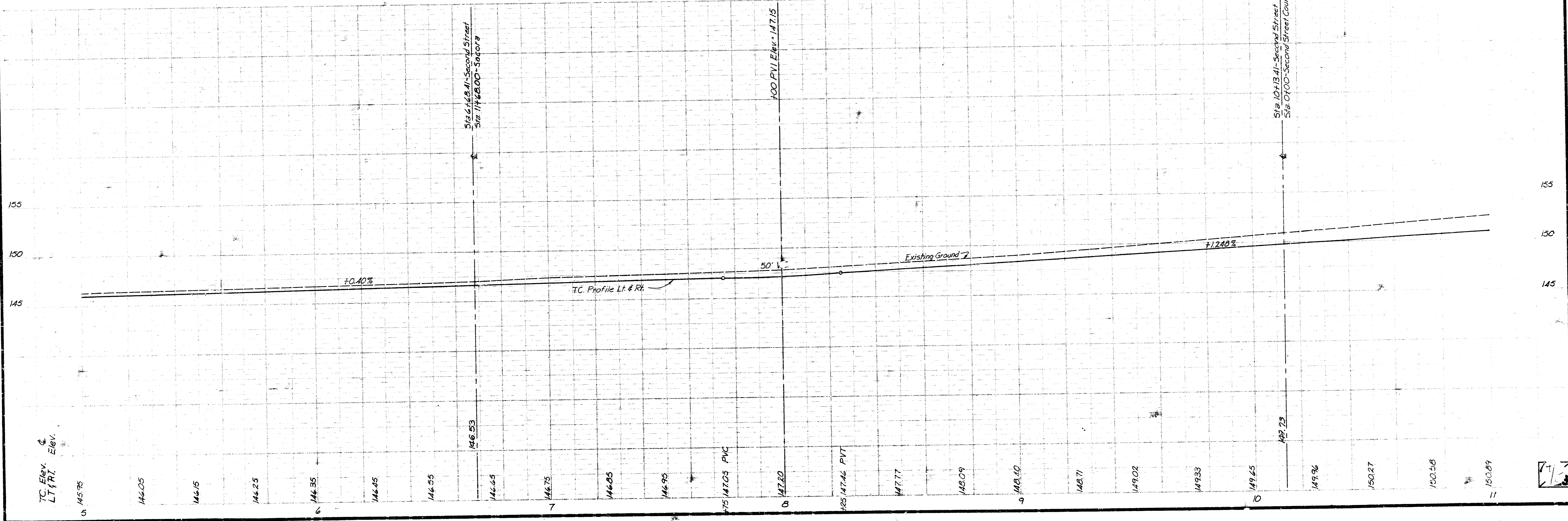


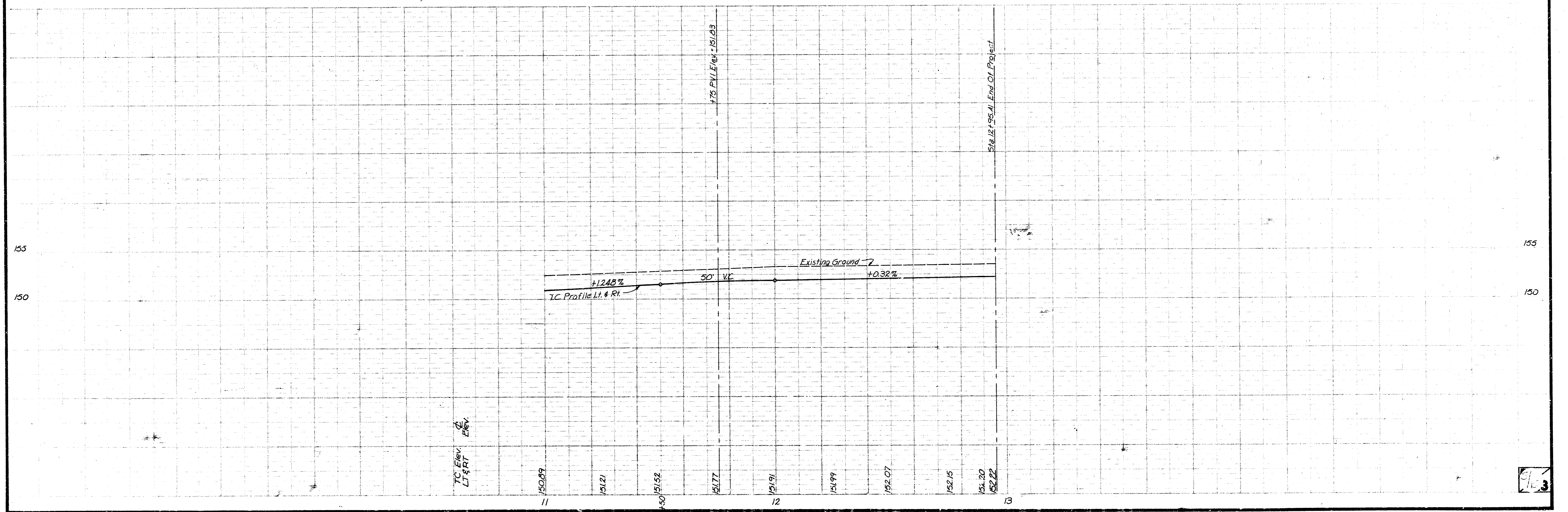
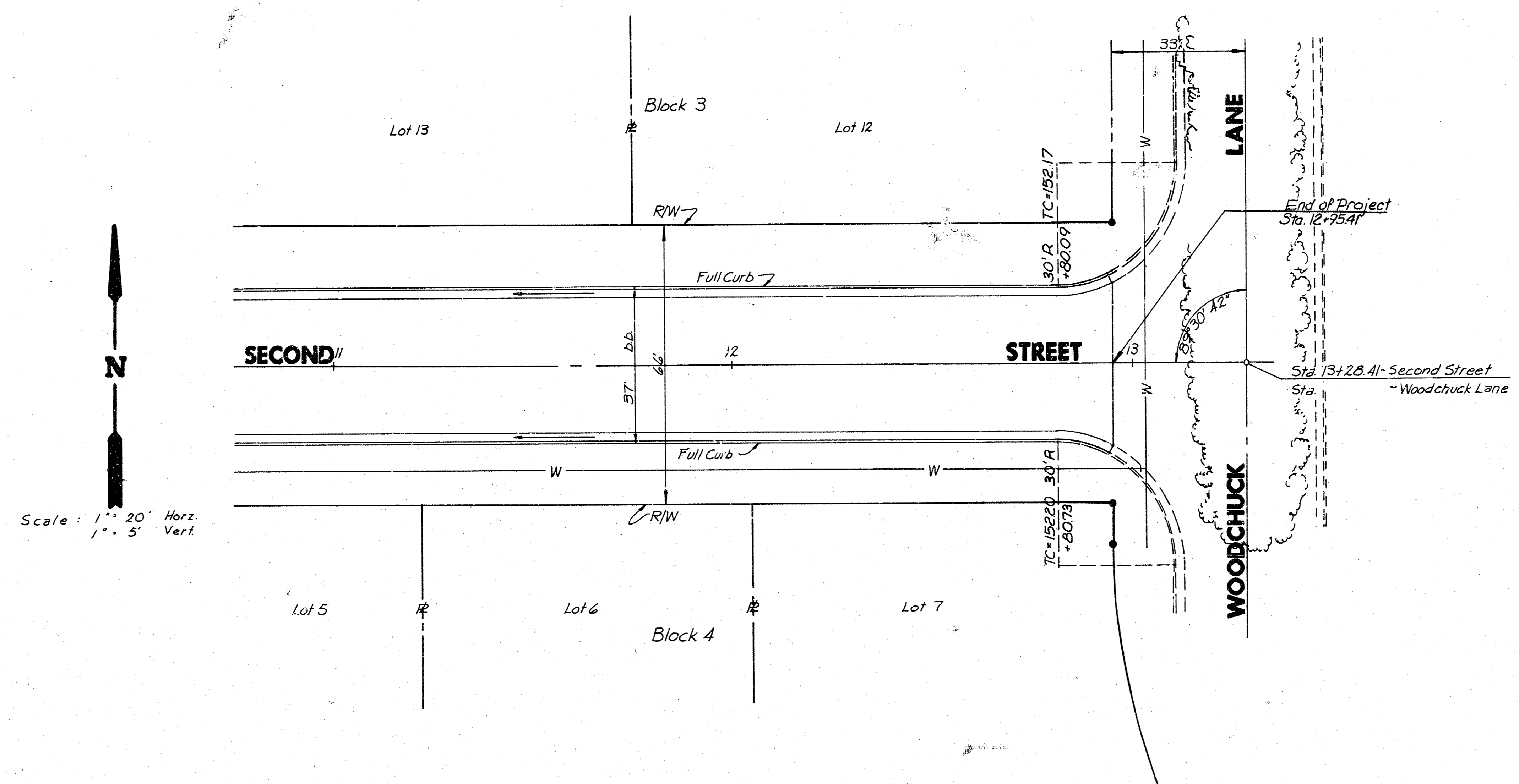
WHISPERING PINES
472-76-245-80830-000-000-001



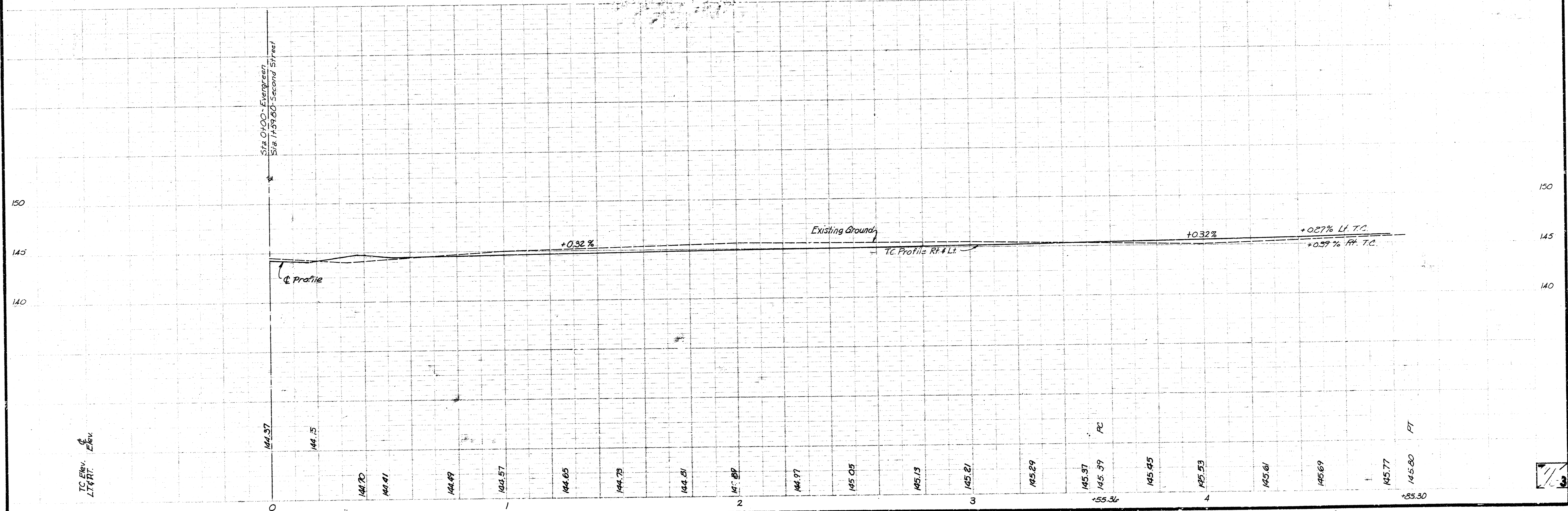
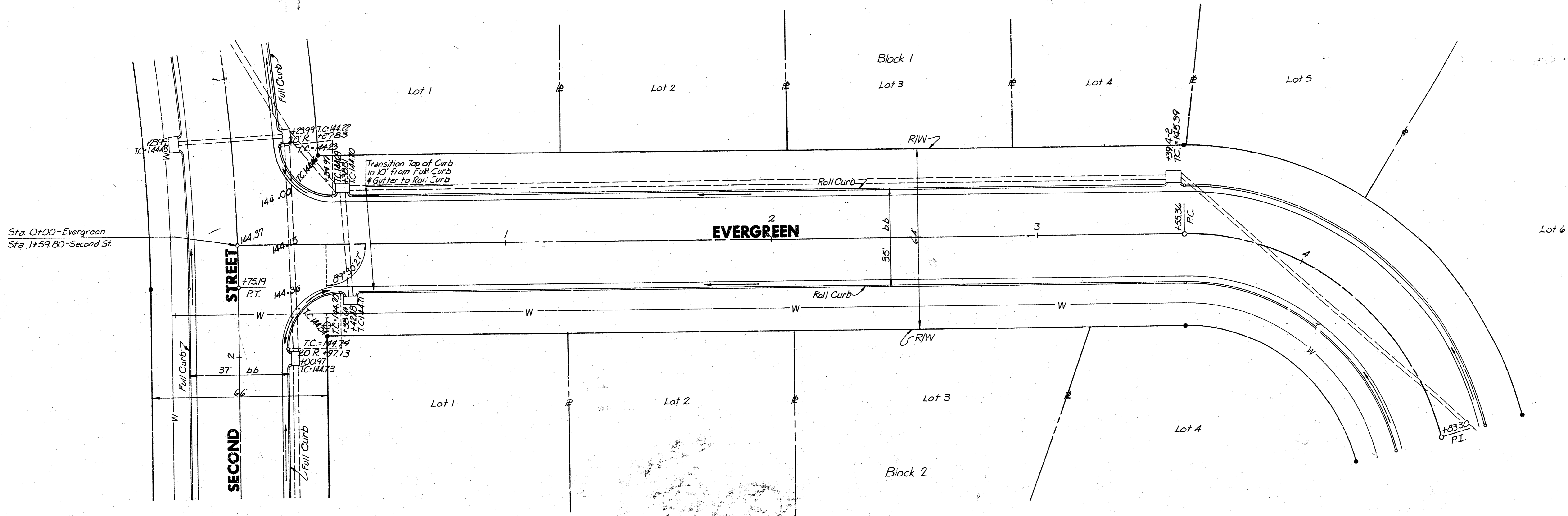
Scale: 1" = 20' Horiz.
1" = 5' Vert.

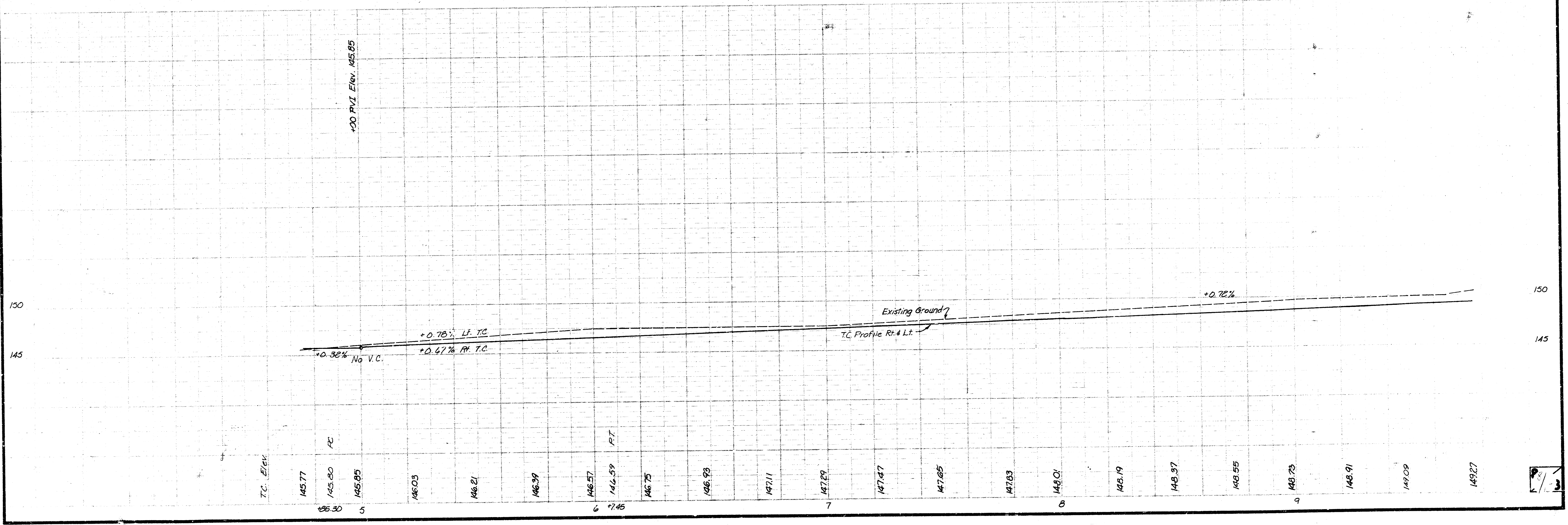
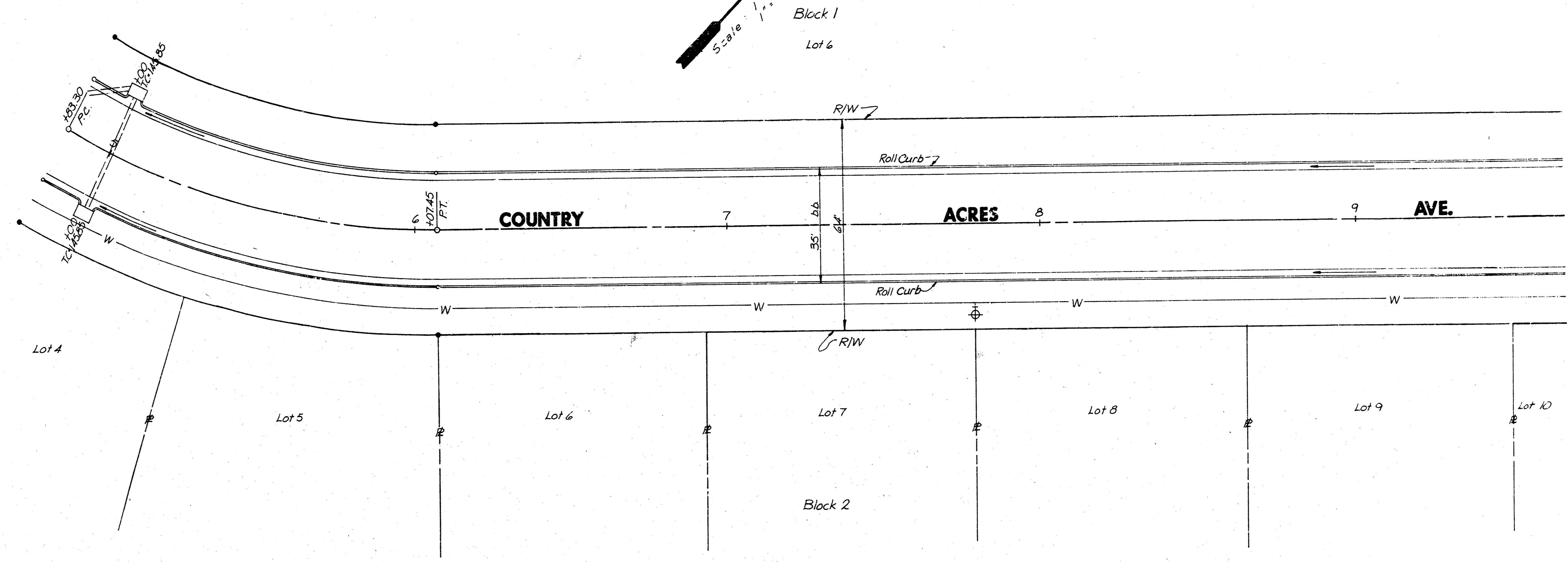
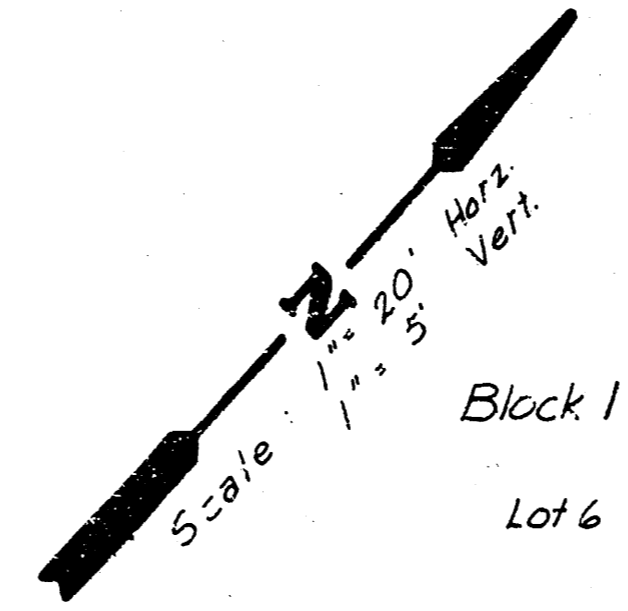
B.M. 2: Sta. Spk. N to PP. 25' N.,
10' E. SW Cor. Lot 3, Blk. 4,
Whispering Pines Estates Elev. 150.39'



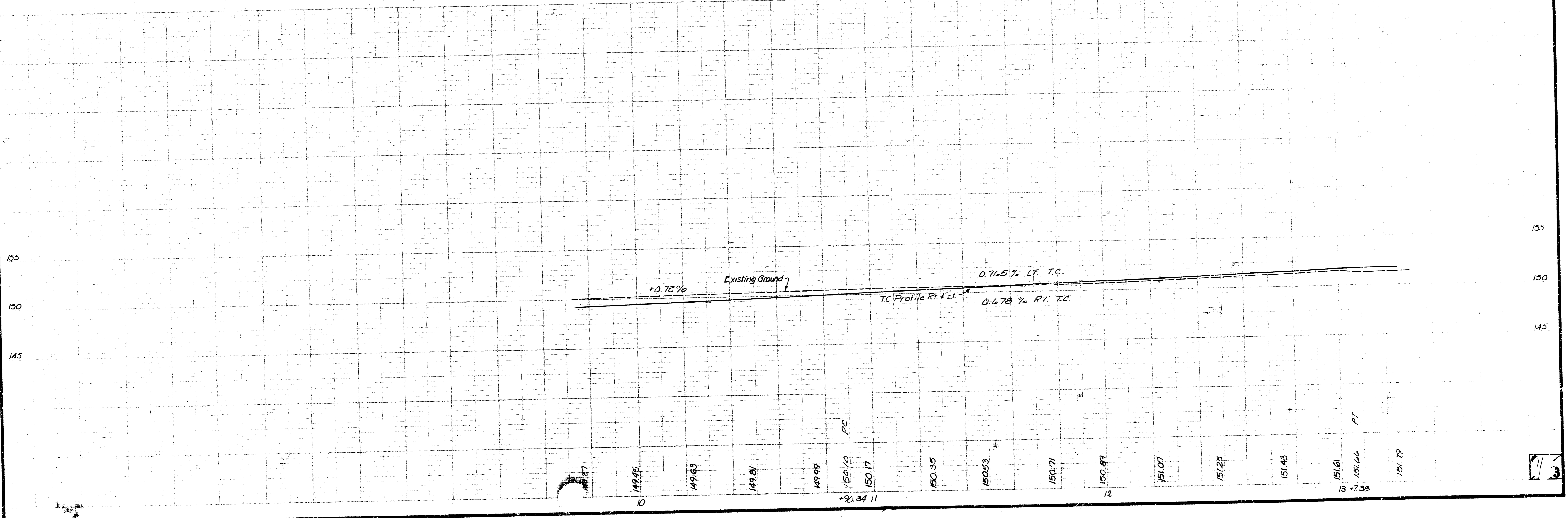
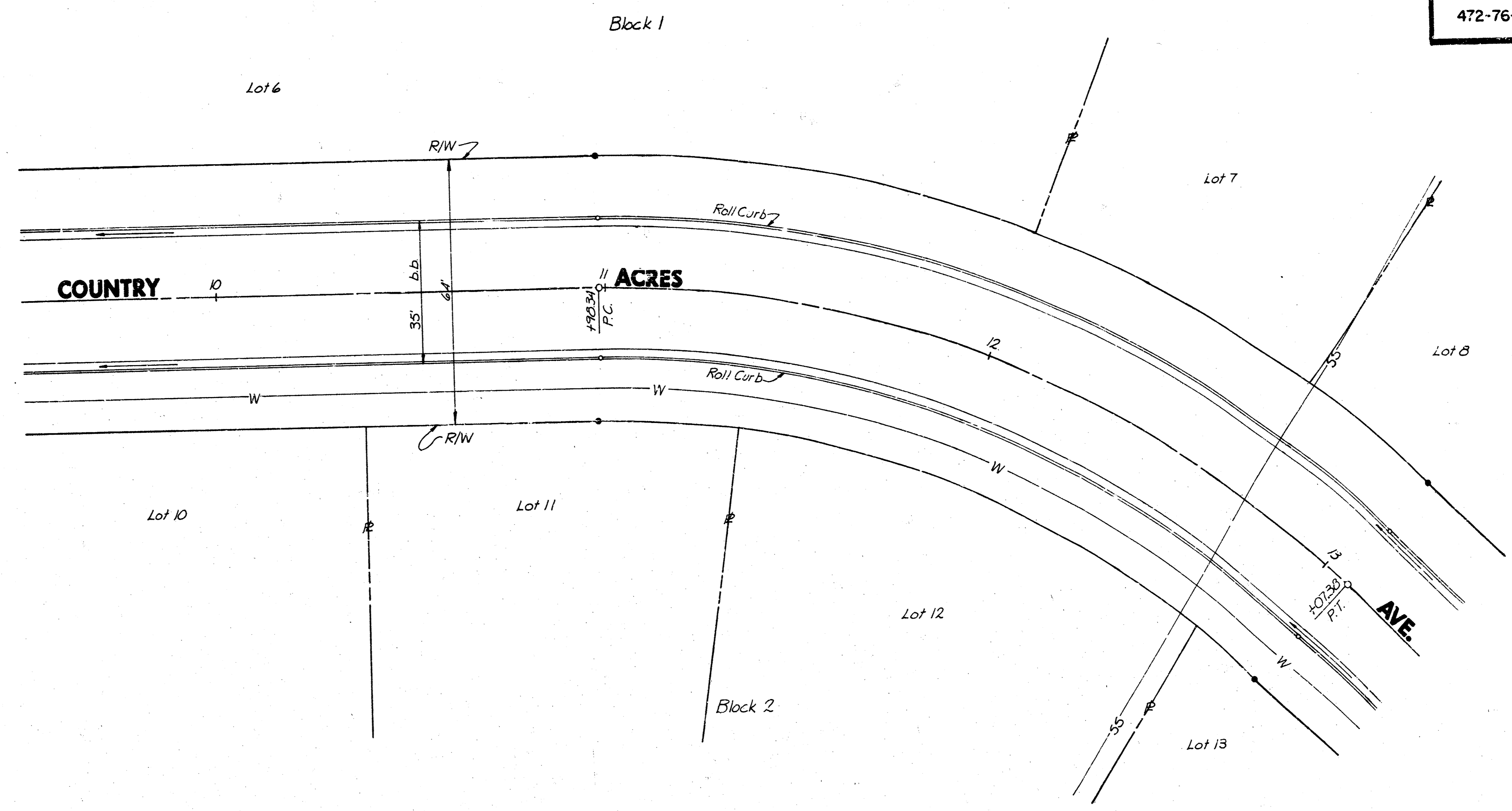
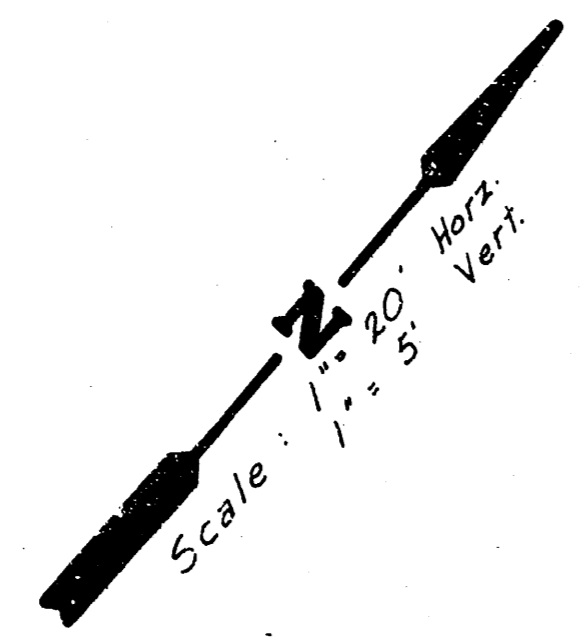


Scale: 1" = 20' Horz.
1" = 5' Vert.





WHISPERING PINES
472-76-245-80830-000-000-001

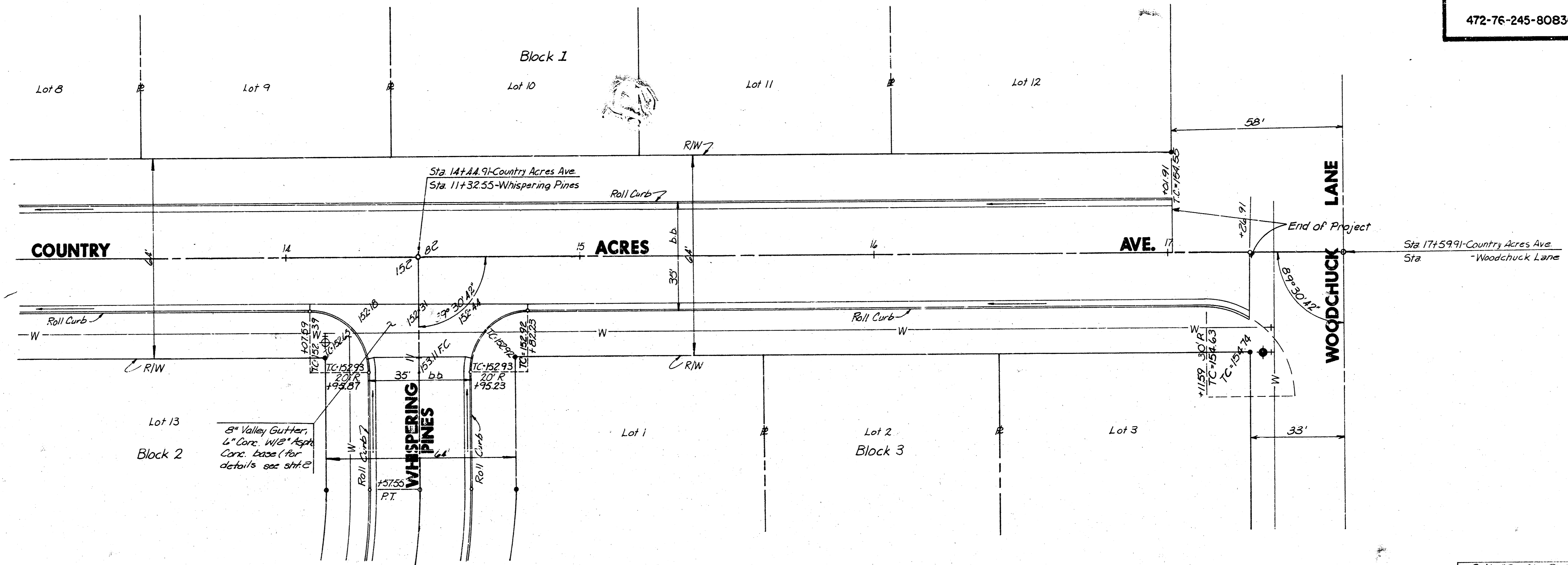


155
150
145

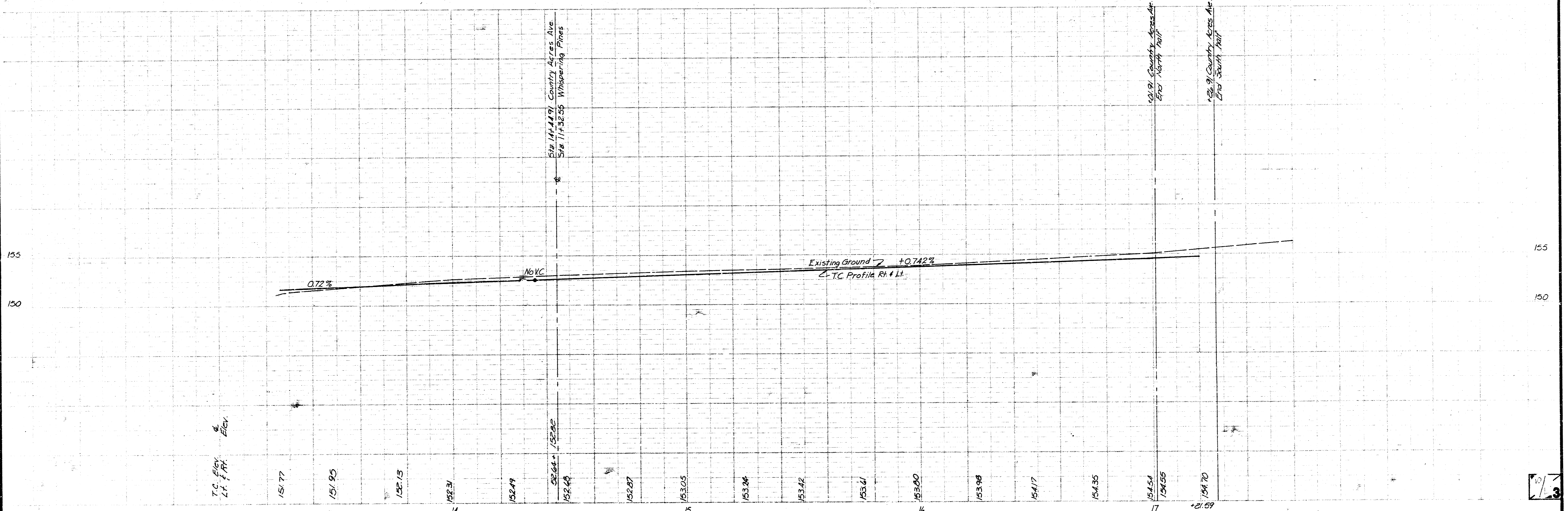
13

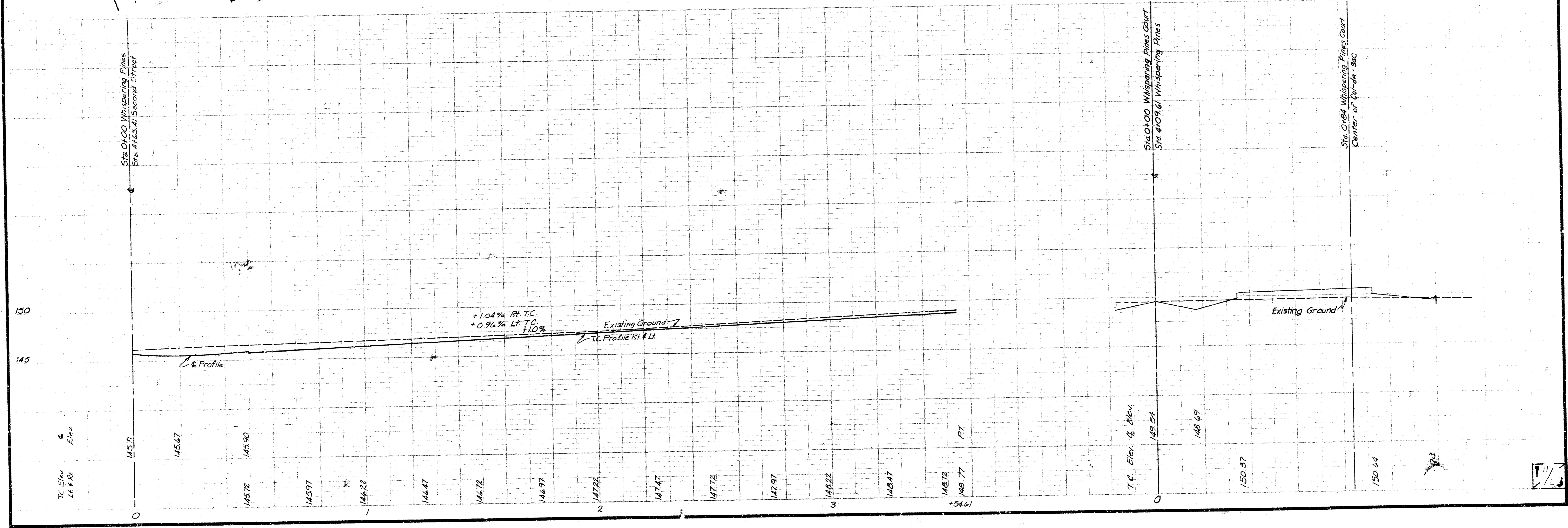
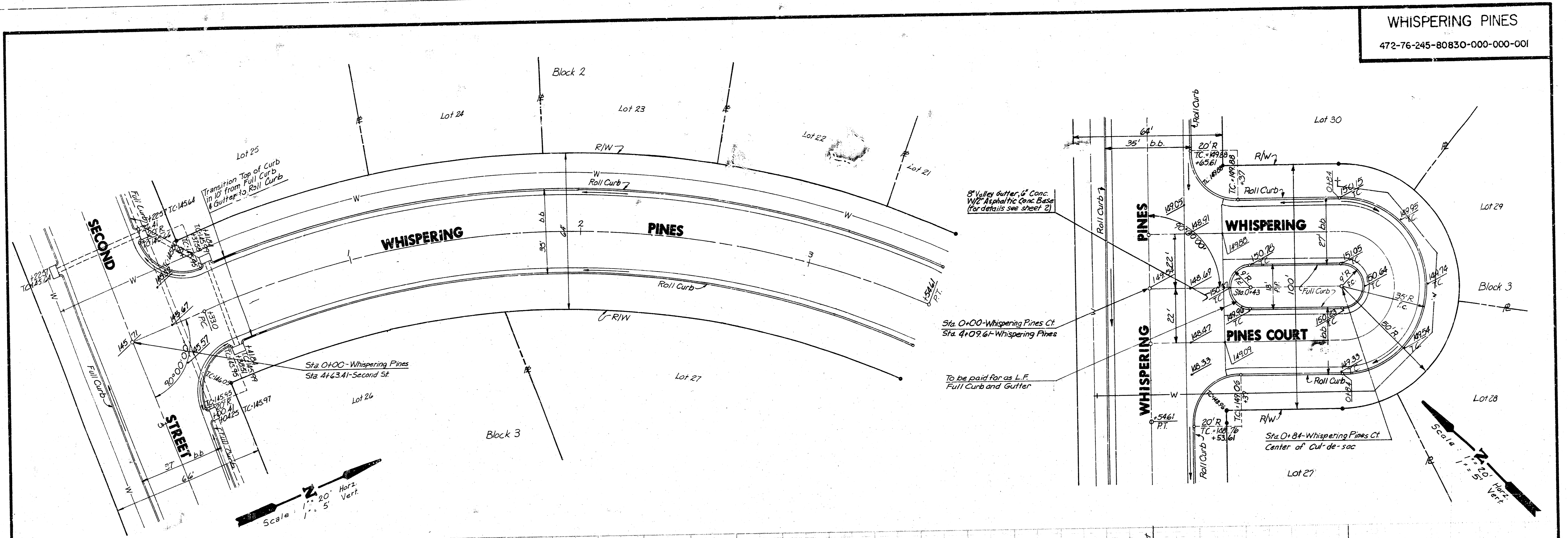
WHISPERING PINES
472-76-245-80830-000-000-001

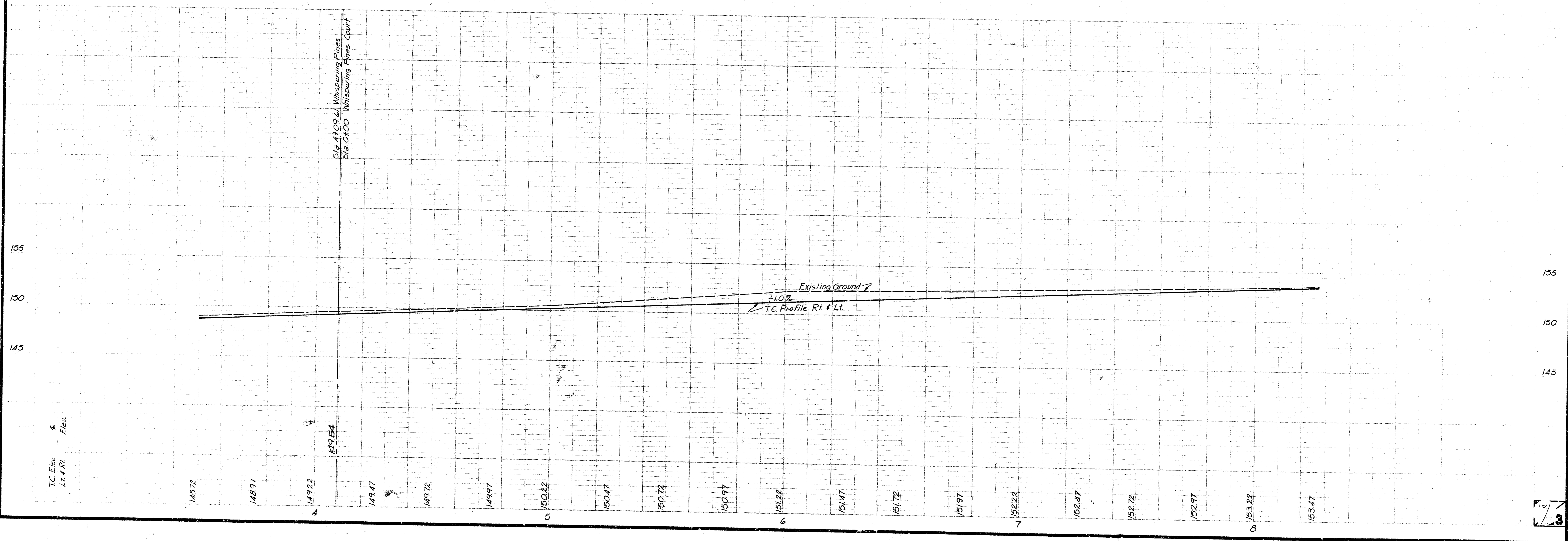
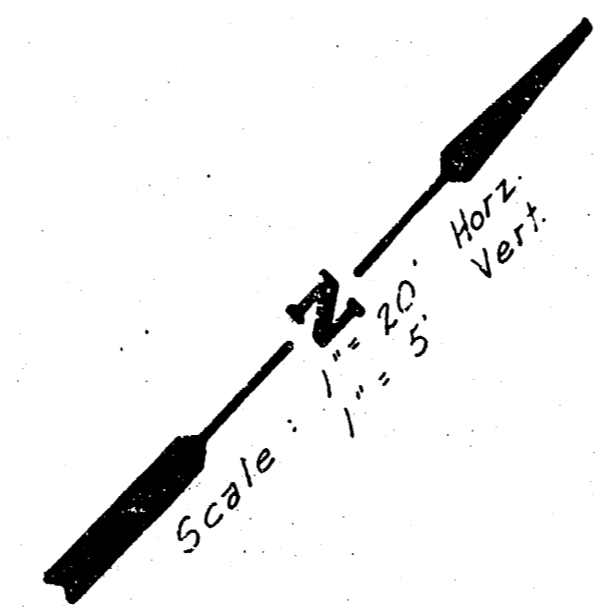
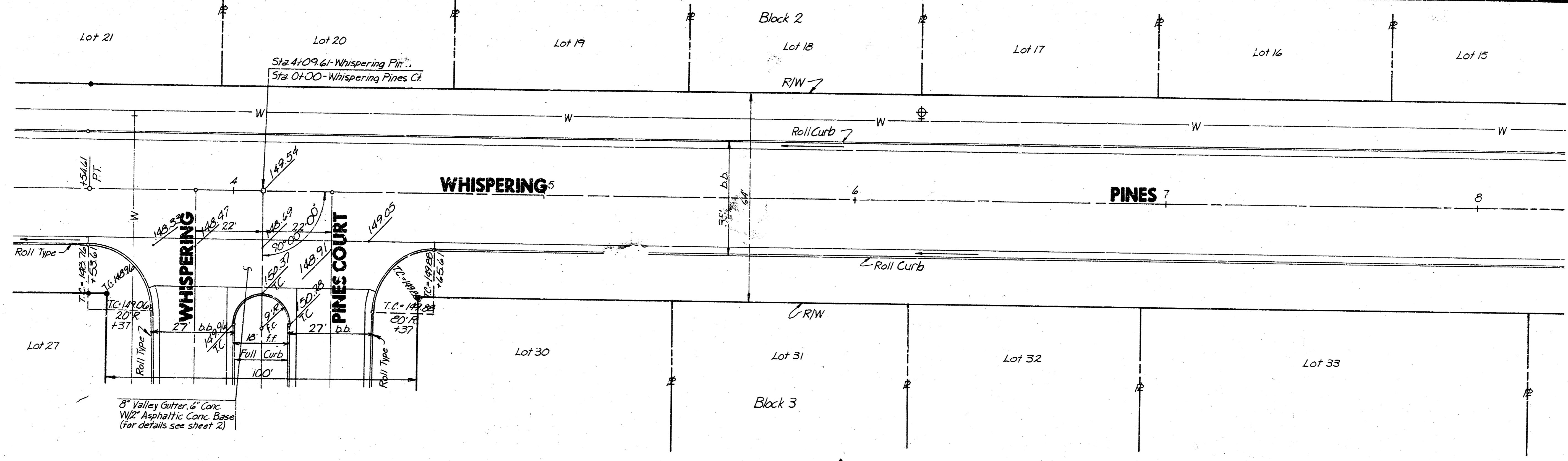
Scale: 1" = 20' Horiz.
1" = 5' Vert.



B.M. #3: Sp. Spt. 3 ft. lat. P.P. E. of N.E. Corner of Whispering Pines. Elev. = 154.06

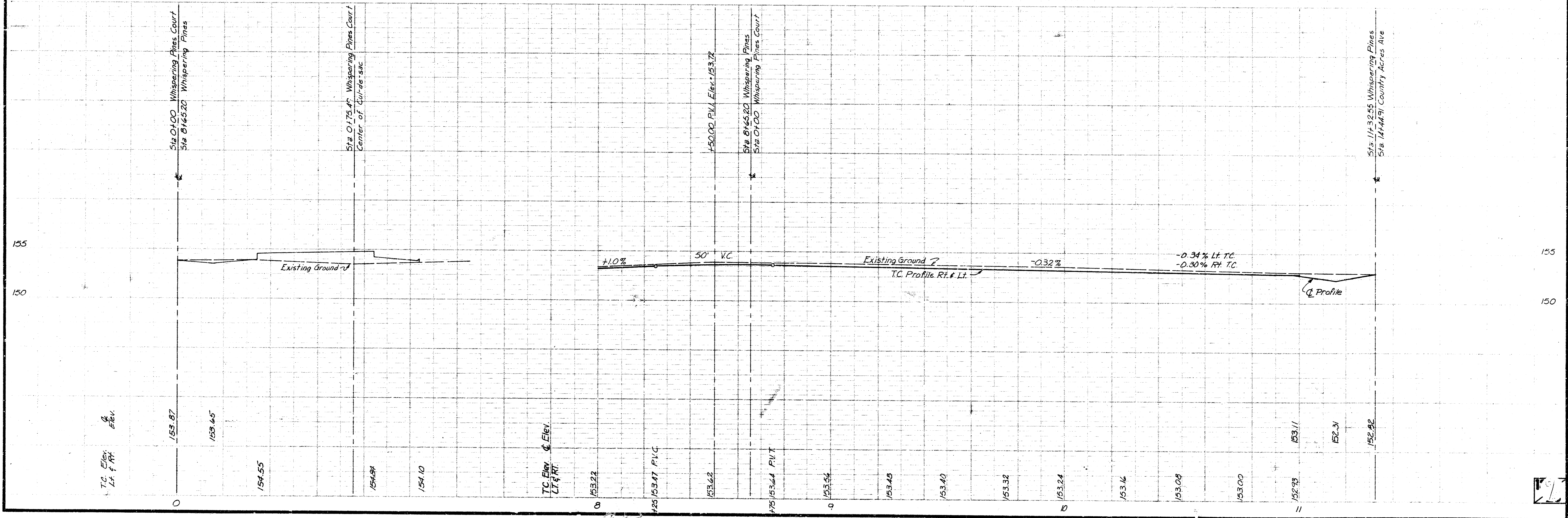
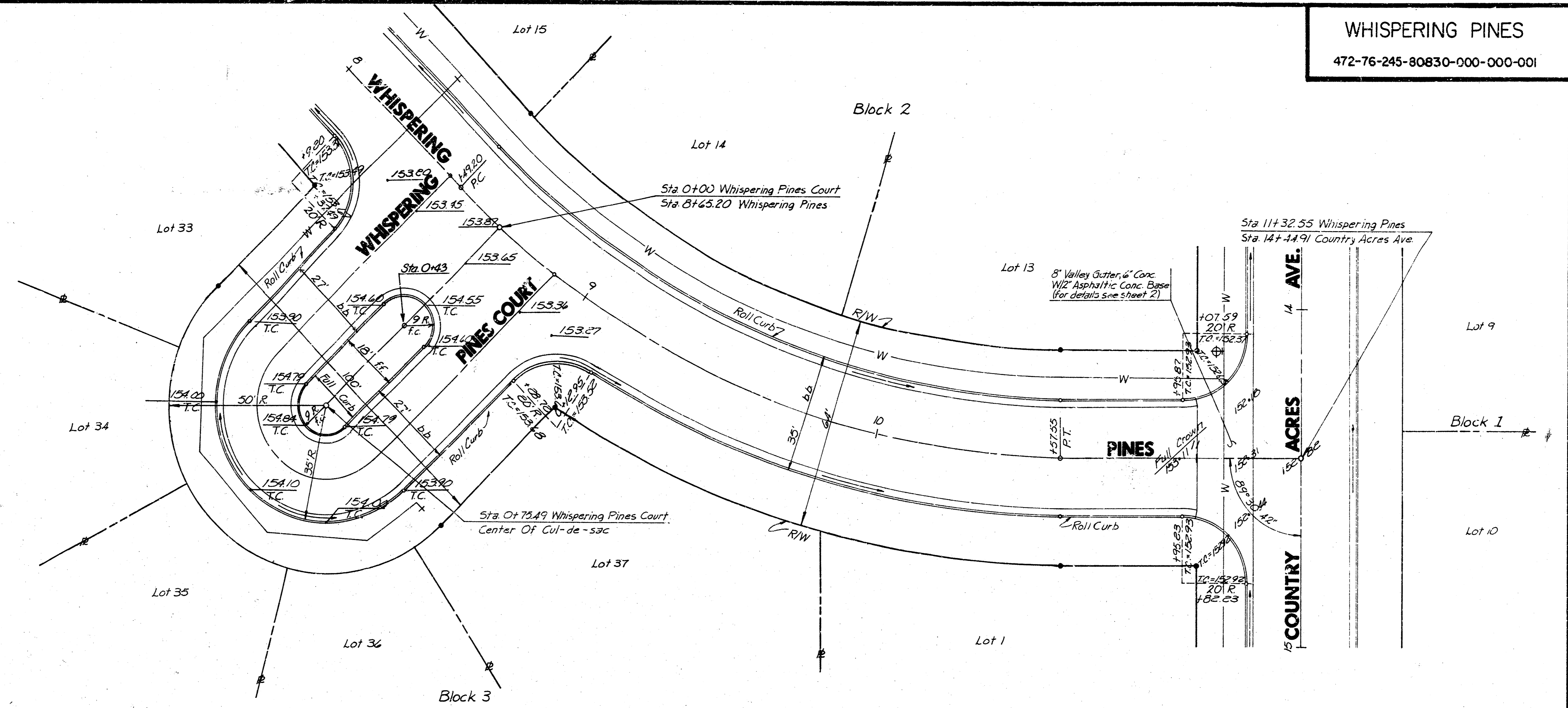






WHISPERING PINES
472-76-245-80830-000-000-001

Scale: 1" = 20' Horz.
1" = 5' Vert.



Location: WHISPERING PINES
See Page 11

CURVE DATA BASED ON 401.40' R. (CL.)

$\Delta/2 = 22^\circ 57' 13''$
DEFLECTION (MIN./FT.) = 4.282256

CL. Station	CL. Arc.	Chord Length		Deflection	Total Deflection
		8' Off-set Left F.C.	8' Off-set Right F.C.		
0 + 35					
0 + 37.98	4.58	4.87	4.30	0° 19' 37"	0° 19' 37"
0 + 38.51	0.95	0.99	0.87	0° 05' 59"	0° 23' 56"
0 + 50	11.49	12.20	10.77	0° 49' 12"	1° 12' 48"
0 + 75	25	26.55	23.44	1° 47' 03"	2° 59' 51"
1 + 0	25	26.55	23.44	1° 47' 04"	4° 46' 55"
1 + 25	25	26.55	23.44	1° 47' 03"	6° 33' 58"
1 + 50	25	26.55	23.44	1° 47' 03"	8° 21' 01"
1 + 75	25	26.55	23.44	1° 47' 04"	10° 08' 05"
2 + 0	25	26.55	23.44	1° 47' 03"	11° 55' 08"
2 + 25	25	26.55	23.44	1° 47' 04"	13° 42' 12"
2 + 50	25	26.55	23.44	1° 47' 03"	15° 29' 15"
2 + 75	25	26.55	23.44	1° 47' 03"	17° 16' 18"
3 + 0	25	26.55	23.44	1° 47' 04"	19° 03' 22"
3 + 25	25	26.55	23.44	1° 47' 03"	20° 50' 25"
3 + 54.61	29.61	31.45	27.76	2° 06' 48"	22° 57' 13"

Location: COUNTRY ACRES
See Page 9

CURVE DATA BASED ON 271.65' R. (CL.)

$\Delta/2 = 22^\circ 02' 47''$
DEFLECTION (MIN./FT.) = 6.327896

CL. Station	CL. Arc.	Chord Length		Deflection	Total Deflection
		8' Off-set Left F.C.	8' Off-set Right F.C.		
10 + 98.24					
11 + 25	26.56	29.10	24.20	2° 48' 42"	2° 48' 42"
11 + 50	25	27.29	22.69	2° 38' 12"	5° 26' 54"
11 + 75	25	27.29	22.69	2° 38' 12"	8° 05' 06"
12 + 00	25	27.29	22.69	2° 38' 12"	10° 43' 18"
12 + 25	25	27.29	22.69	2° 38' 11"	13° 21' 29"
12 + 50	25	27.29	22.69	2° 38' 12"	15° 59' 41"
12 + 75	25	27.29	22.69	2° 38' 12"	18° 37' 53"
13 + 00	25	27.29	22.69	2° 38' 12"	21° 16' 05"
13 + 07.58	7.58	8.06	6.70	0° 46' 42"	22° 02' 47"

Location: WHISPERING PINES
See Page 13

CURVE DATA BASED ON 262.84' R. (CL.)

$\Delta/2 = 22^\circ 42' 34''$
DEFLECTION (MIN./FT.) = 6.53970

CL. Station	CL. Arc.	Chord Length		Deflection	Total Deflection
		8' Off-set Left F.C.	8' Off-set Right F.C.		
8 + 49.20					
8 + 75	25.80	23.34	28.71	2° 48' 44"	2° 48' 44"
9 + 0	25	22.61	27.37	2° 43' 29"	5° 32' 13"
9 + 12.95	12.95	11.72	14.18	1° 24' 41"	6° 56' 53"
9 + 25	12.05	10.90	13.19	1° 18' 48"	8° 15' 43"
9 + 50	25	22.61	27.37	2° 43' 50"	10° 59' 13"
9 + 75	25	22.61	27.37	2° 43' 29"	13° 42' 42"
10 + 0	25	22.61	27.37	2° 43' 50"	16° 26' 12"
10 + 25	25	22.61	27.37	2° 43' 50"	19° 09' 42"
10 + 50	25	22.61	27.37	2° 43' 29"	21° 53' 11"
10 + 57.55	7.55	6.83	8.27	0° 49' 13"	22° 42' 34"

Location: COUNTRY ACRES
See Page 8

CURVE DATA BASED ON 240.43' R. (CL.)

$\Delta/2 = 14^\circ 47' 33''$
DEFLECTION (MIN./FT.) = 7.149013

CL. Station	CL. Arc.	Chord Length		Deflection	Total Deflection
		8' Off-set Left F.C.	8' Off-set Right F.C.		
4 + 83.30					
5 + 0	16.70	14.96	18.43	1° 59' 23"	1° 59' 23"
5 + 25	25	22.39	27.59	2° 58' 44"	4° 58' 07"
5 + 50	25	22.39	27.59	2° 58' 43"	7° 56' 50"
5 + 75	25	22.39	27.59	2° 58' 44"	10° 55' 34"
6 + 0	25	22.39	27.59	2° 58' 43"	13° 54' 17"
6 + 07.45	7.45	6.68	8.23	0° 53' 16"	14° 47' 33"

Location: SECOND STREET
See Page 3

CURVE DATA BASED ON 369.84' R. (CL.)

$\Delta/2 = 14^\circ 21' 29''$
DEFLECTION (MIN./FT.) = 4.652144

CH 175 59

CL. Station	CL. Arc.	Chord Length		Deflection	Total Deflection
		8' Off-set Left F.C.	8' Off-set Right F.C.		
0 - 9.99					
0 + 0	9.99	10.70	9.30	0° 46' 29"	0° 46' 29"
0 + 8.94	8.94	9.58	8.32	0° 41' 35"	1° 28' 04"
0 + 25	16.06	17.20	14.94	1° 14' 43"	2° 42' 47"
0 + 50	25	26.78	23.26	1° 56' 18"	4° 39' 05"
0 + 75	25	26.78	23.26	1° 56' 18"	6° 35' 23"
1 + 0	25	26.78	23.26	1° 56' 18"	8° 31' 41"
1 + 27.83	27.83	29.81	25.89	2° 09' 28"	10° 41' 09"
1 + 50	22.17	23.75	20.63	1° 45' 09"	12° 24' 18"
1 + 75.19	25.19	26.98	23.44	1° 57' 11"	14° 21' 29"

Location: EVERGREEN
See Page 7

CURVE DATA BASED ON 97.74' R. (CL.)

$\Delta/2 = 37^\circ 30' 00''$
DEFLECTION (MIN./FT.) = 17.58637

CL. Station	CL. Arc.	Chord Length		Deflection	Total Deflection
		8' Off-set Left F.C.	8' Off-set Right F.C.		
3 + 55.36					
3 + 75	19.64	24.62	14.59	5° 45' 24"	5° 45' 24"
4 + 0	25	31.31	18.56	7° 19' 39"	13° 05' 03"
4 + 25	25	31.31	18.56	7° 19' 40"	20° 24' 43"
4 + 50	25	31.31	18.56	7° 19' 39"	27° 44' 22"
4 + 75	25	31.31	18.56	7° 19' 40"	35° 04' 02"
4 + 83.30	8.30	10.42	6.18	2° 25' 58"	37° 30' 00"

CURVE LAYOUT & STAKING INFORMATION

Van Doren - Hazard - Stallings



Architects • Engineers • Planners
Topeka Wichita Minneapolis

