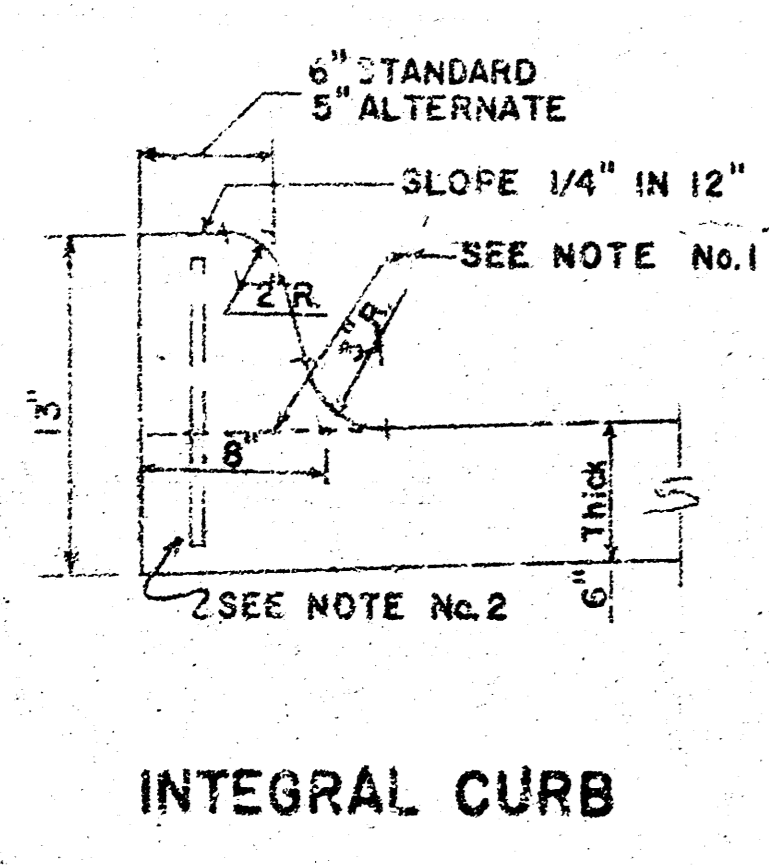
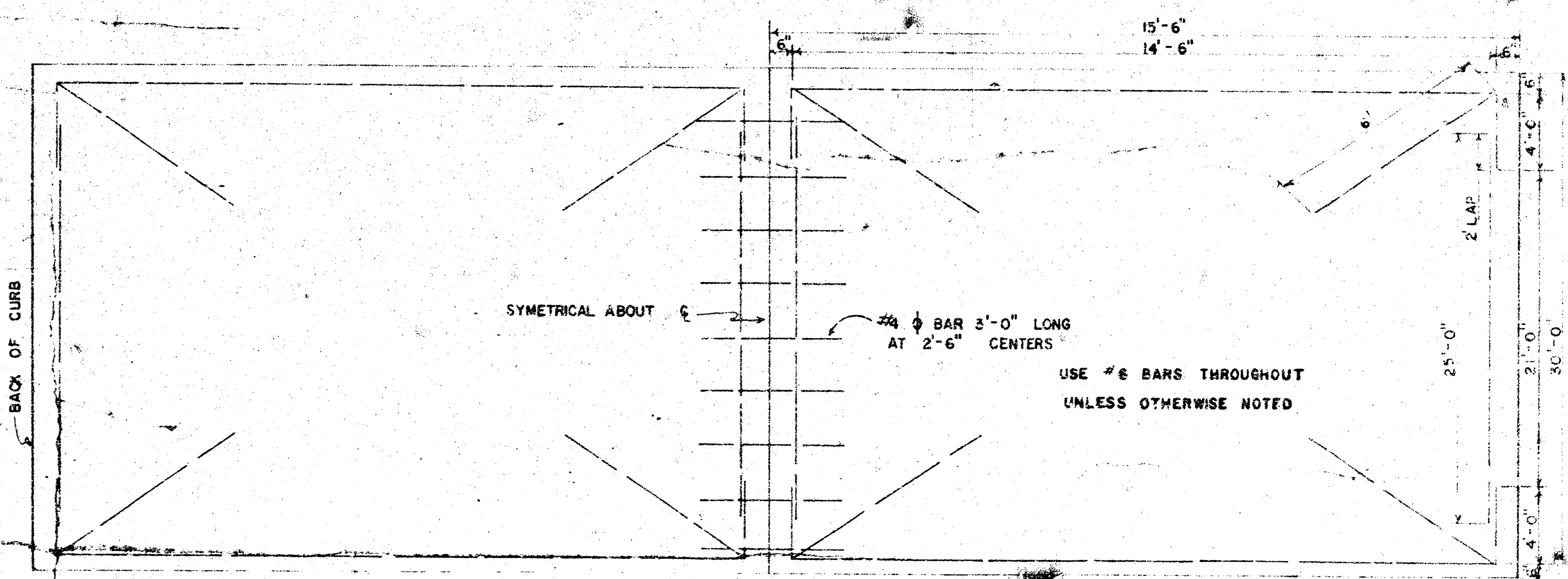
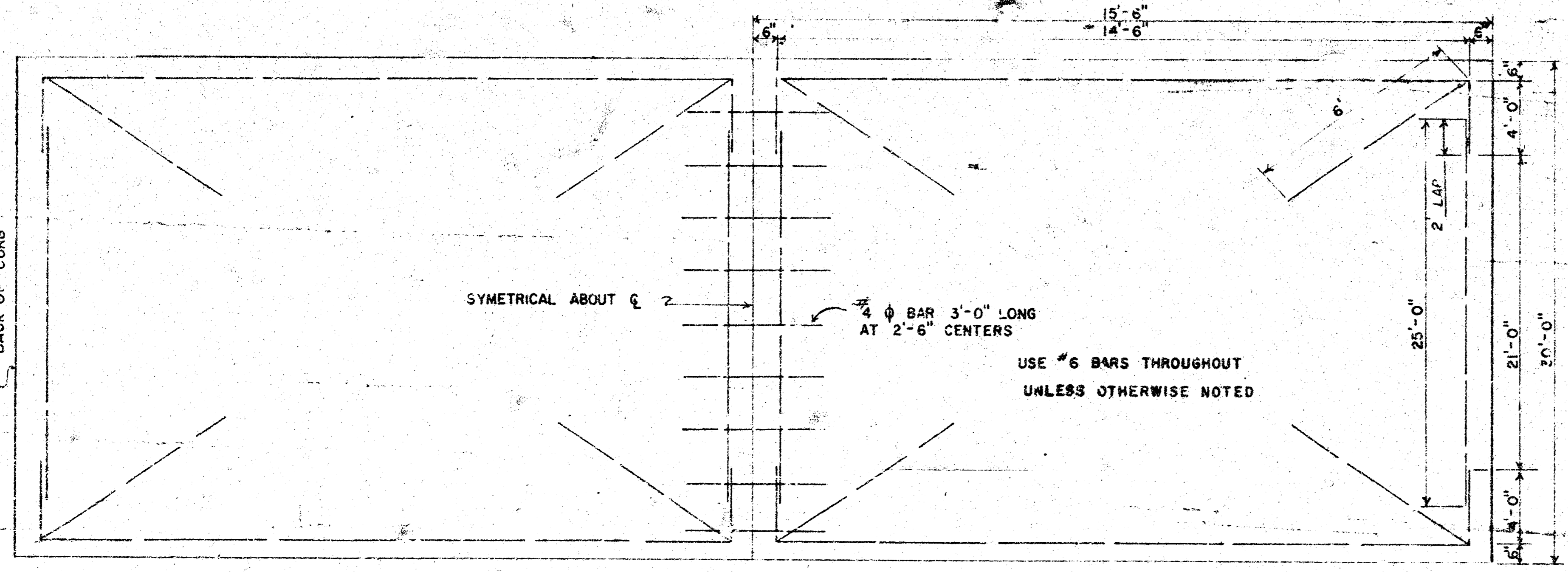
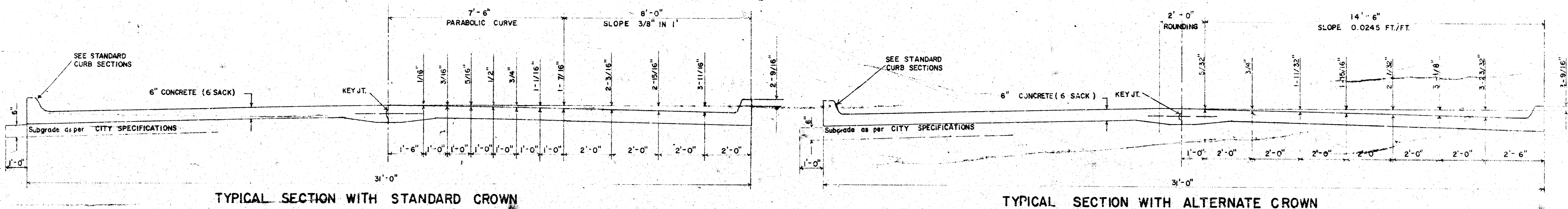
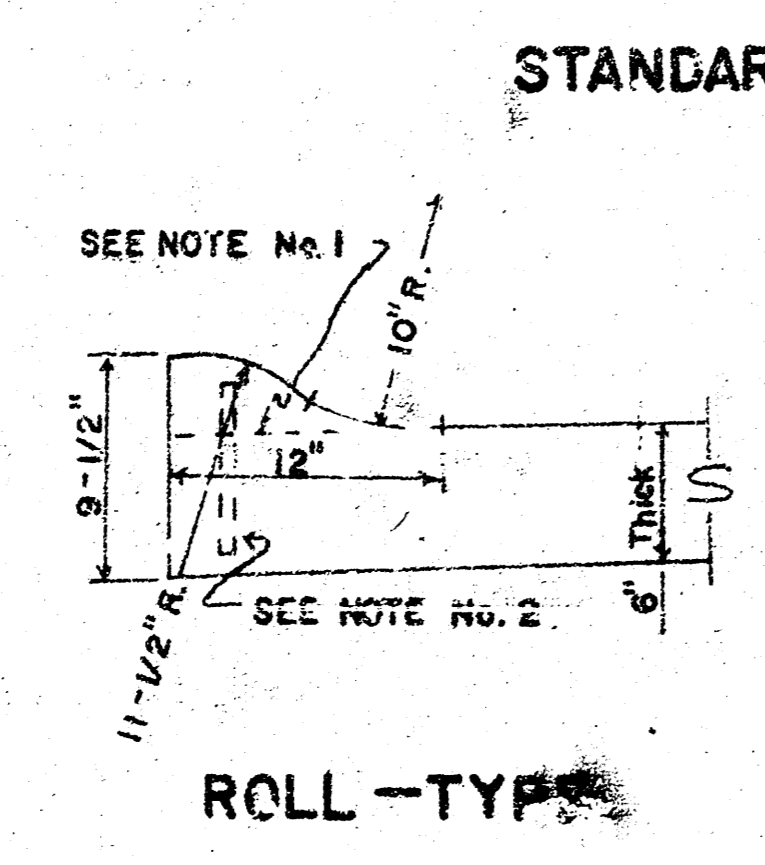


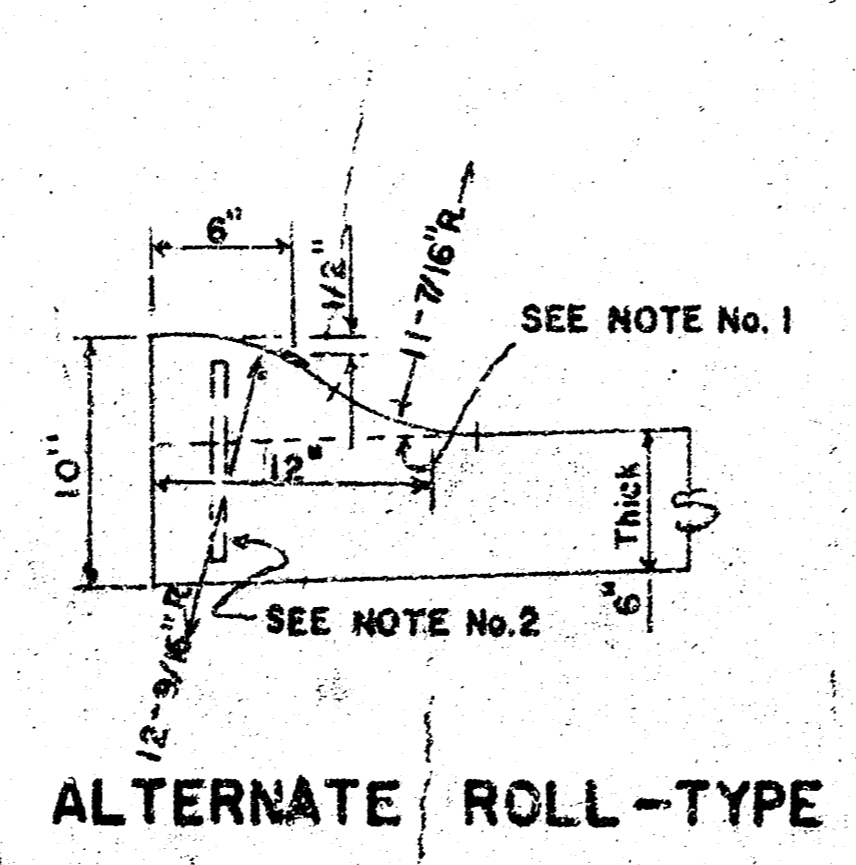
**WHITEHALL ST.  
W. L. DOUGHERTY TO E INCLUDING CUL-DE-SAC  
TYPICAL SECTIONS OF 30' CONCRETE PAVEMENT**



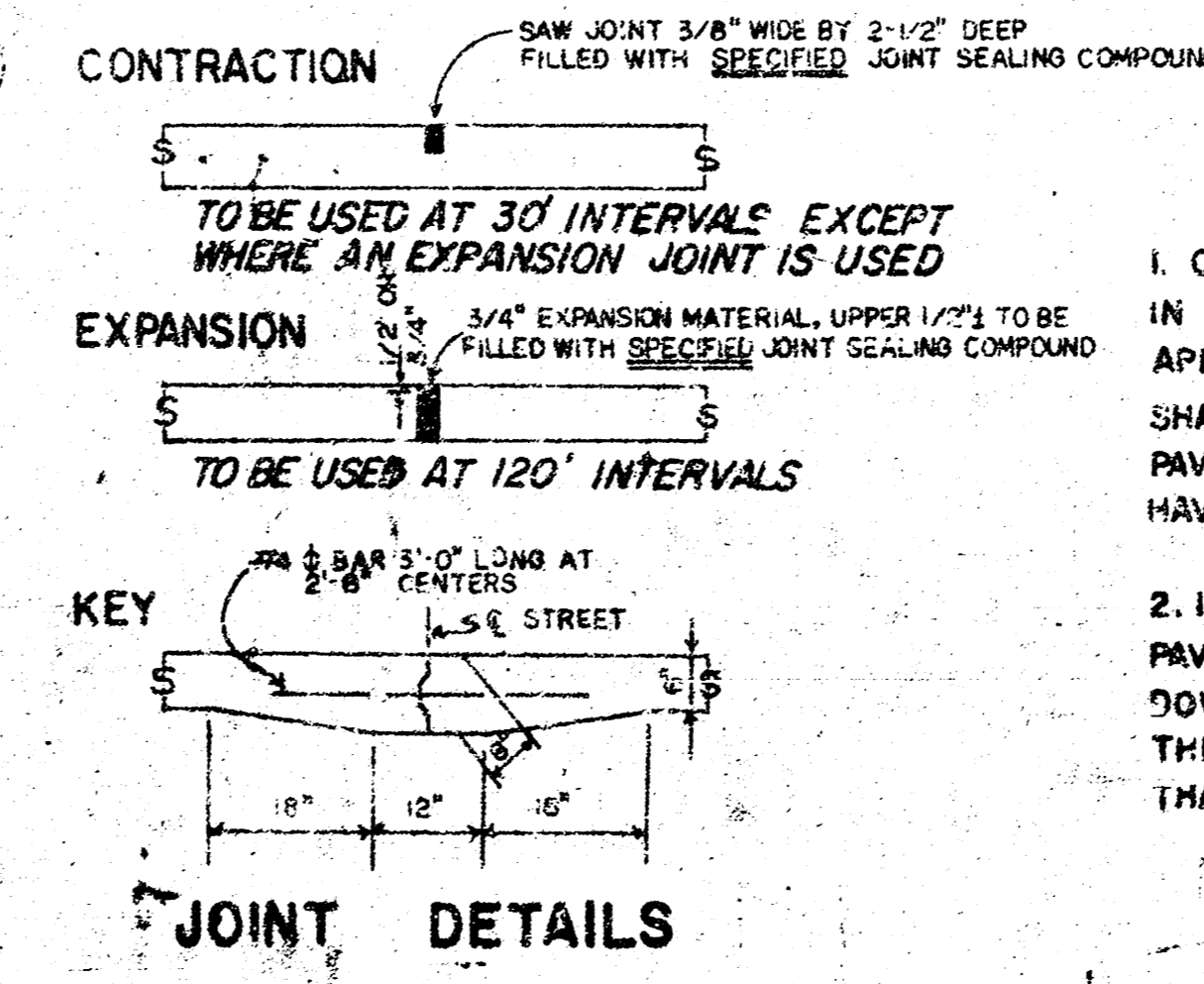
**INTEGRAL CURB**



**ROLL-TYPE**



**ALTERNATE ROLL-TYPE**



**JOINT DETAILS**

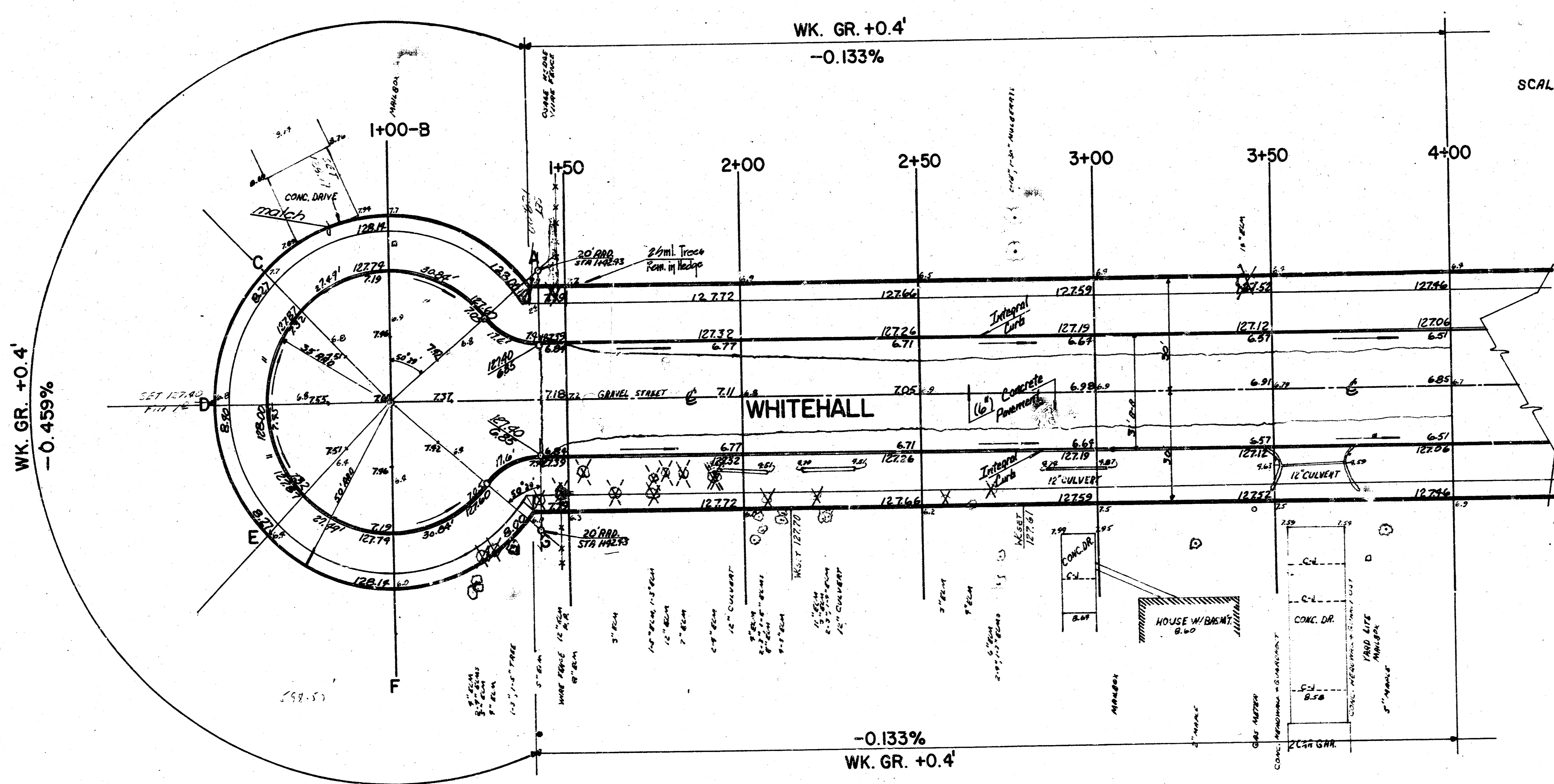
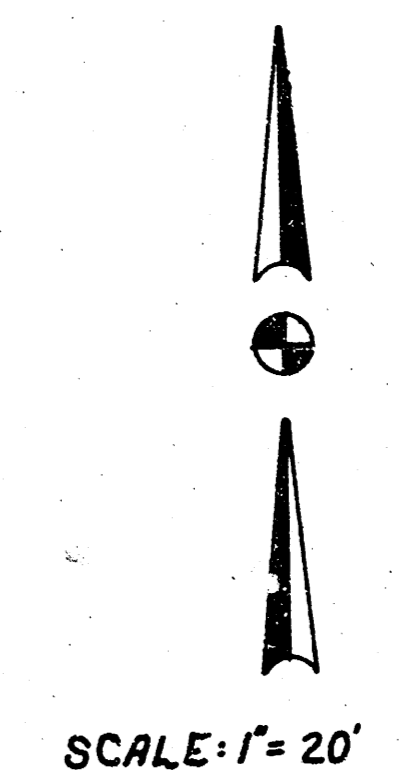
**GENERAL NOTES**

- CONTRACTION JOINTS MAY BE CONSTRUCTED IN INTEGRAL CURB BY SAWING WITH AN APPROVED CONCRETE SAW. THE SAW CUT SHALL EXTEND THROUGH THE CURB TO THE PAVEMENT. SAWED CONTRACTION JOINTS SHALL HAVE A MAXIMUM SPACING OF 10'.
- INTEGRAL CURB SHALL BE TIED TO THE PAVEMENT BASE WITH SHORT DEFORMED DOVEL BARS SPACED AT 2'-6" INTERVALS. THESE DOVEL BARS SHALL NOT BE LESS THAN 1/2" OR MORE THAN 3/4" IN DIAMETER.

**CITY OF WICHITA, KANSAS**  
 Department of Public Works Engineering Division  
 R. W. Linn City Engineer  
 Date: Project No. DAKS574035

**FILMED FROM THE BEST AVAILABLE COPY**

B.M. 128.79 N.W. COR. CONC. PORCH OF HOUSE AT 4503 WHITEHALL



Surveyed by  
 Plan C. Examination  
 Exc. C. Examination  
 Checked

WK. GR. +0.4'  
-0.459%

WK. GR. +0.4'  
-0.133%

WK. GR. +0.4'  
-0.133%

B IS C OF WHITEHALL

NOTE: EXCESS EXCAVATED MATERIAL FROM 12TH STREET, BAKER TO ZOO BOULEVARD TO BE USED ON THIS PROJECT.

SUB-GRADE  
TYPE OF SUB-GRADE TREATMENT SHALL BE DETERMINED BY THE FIELD ENGINEER. SUB-GRADE TREATMENT MAY CONSIST OF LIME TREATMENT, CEMENT TREATMENT, SUB-GRADE MODIFICATION, OR ANY COMBINATION OF THESE.

NOTE TO FIELD ENGINEER & CONTRACTOR  
Grade parking and clear right-of-way for proposed sidewalk. Compact fill in sidewalk area TO BE CONSTRUCTED BY "OTHERS".

- = Tree Removal
- = Tree Removal To Be Decided By Engineer

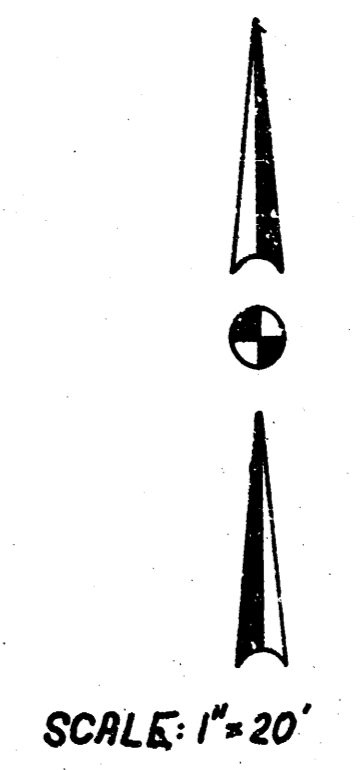
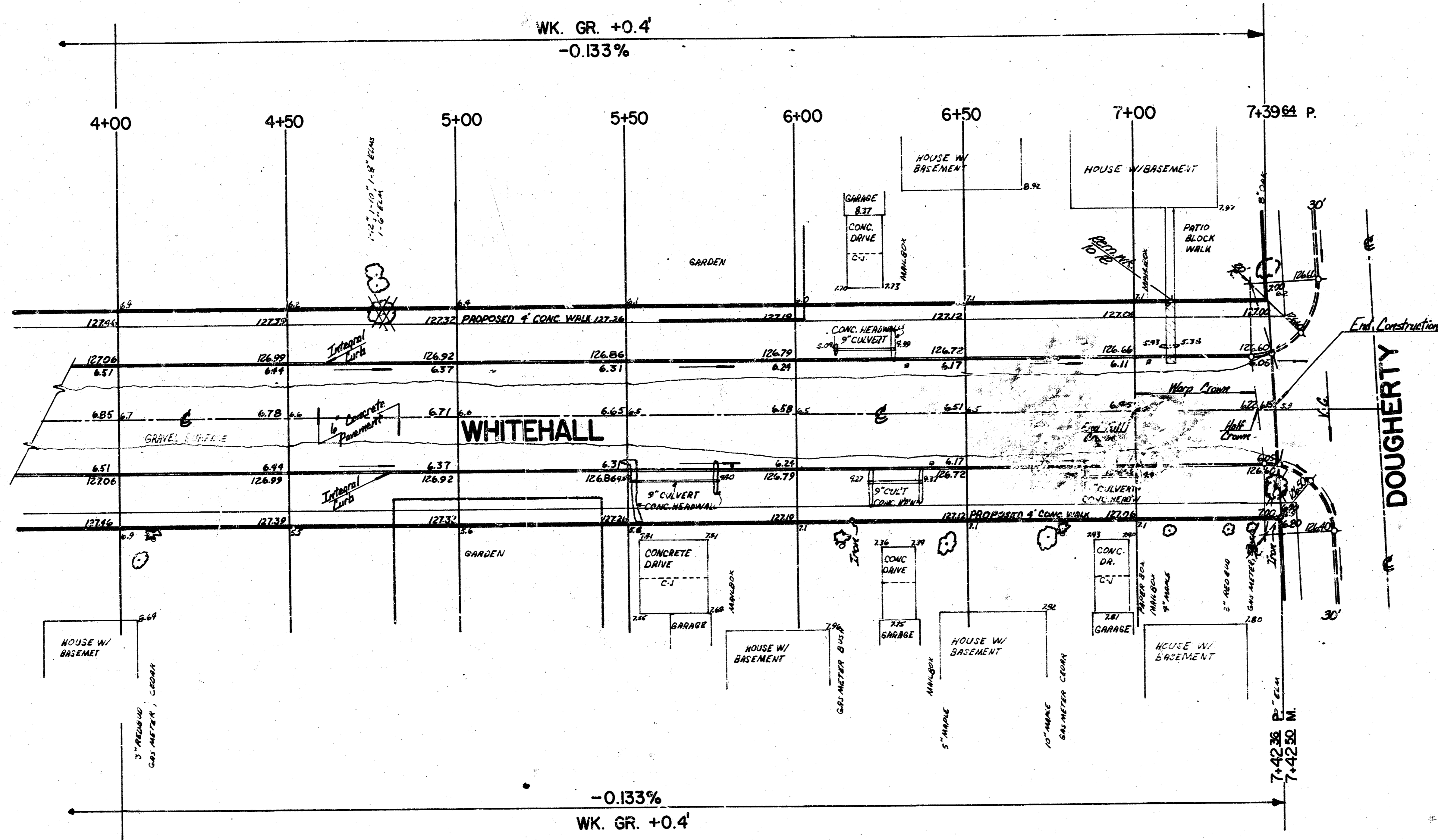
**EARTHWORK**

<u>EXCAVATION</u>	166 C.Y.
+10%	17 C.Y.
<b>TOTAL</b>	<b>183 C.Y.</b>
<u>COMPACTED FILL</u>	318 C.Y.
+10%	32 C.Y.
<b>TOTAL</b>	<b>350 C.Y.</b>

<u>MANIPULATION</u>	2688 S.Y.
<u>BORROW</u>	944 C.Y.
+20%	189 C.Y.
<b>TOTAL</b>	<b>1133 C.Y.</b>

**WHITEHALL ST.**  
 W. L. DOUGHERTY TO & INCLUDING  
 CUL-DE-SAC. 30' CONC. W/ INT. CB.  
 CITY OF WICHITA, KANSAS  
 R. W. LINN - CITY ENGINEER  
 DATE: \_\_\_\_\_  
 PROJ. NO. DAKS574035 <sup>3/3</sup>

B.M. 128.79' N.W. COR. CONC. PORCH OF HOUSE AT 4503 WHITEHALL



B IS C OF WHITEHALL

WHITEHALL  
 PROJ. NO. DAKS574039