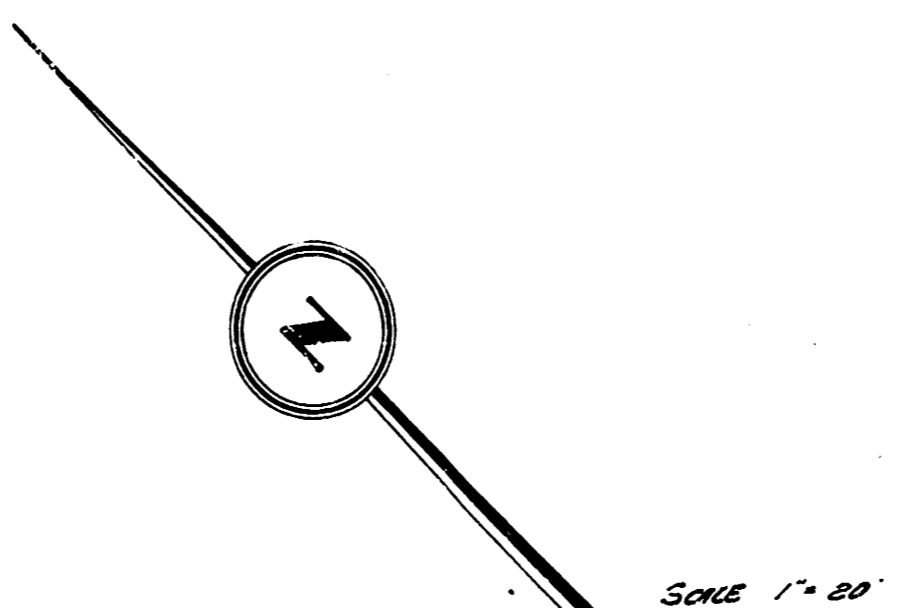
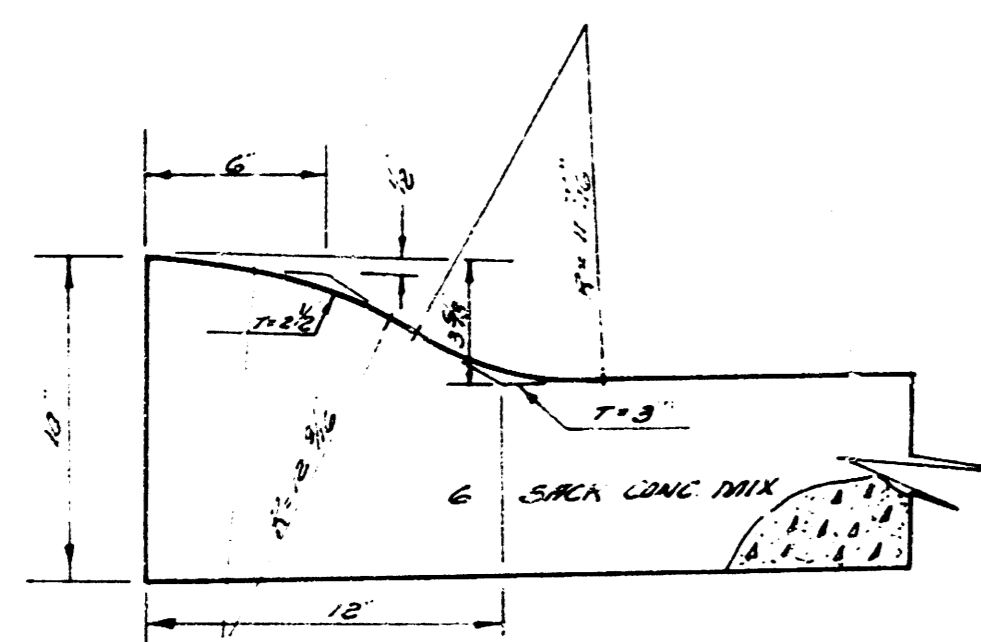
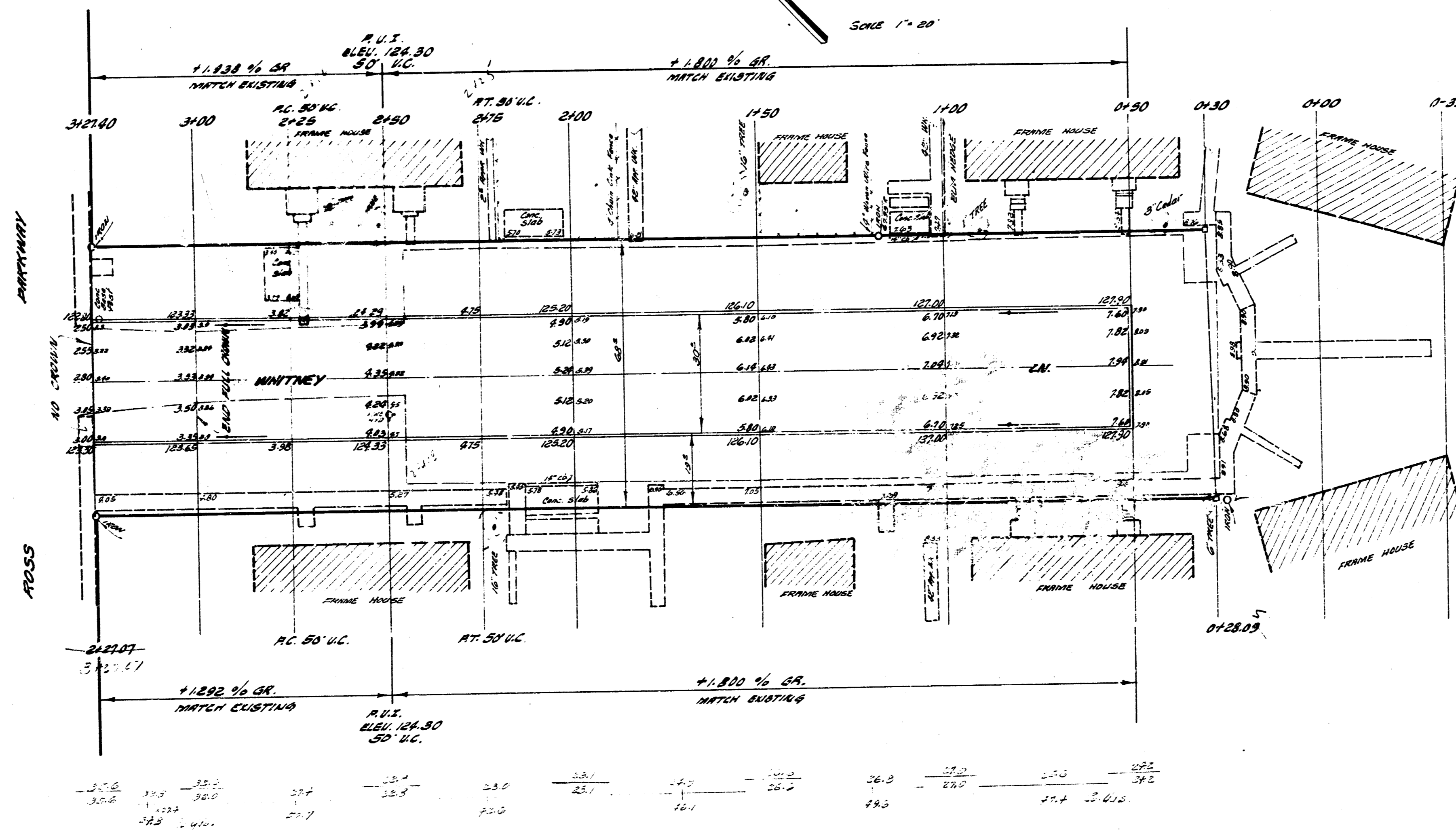
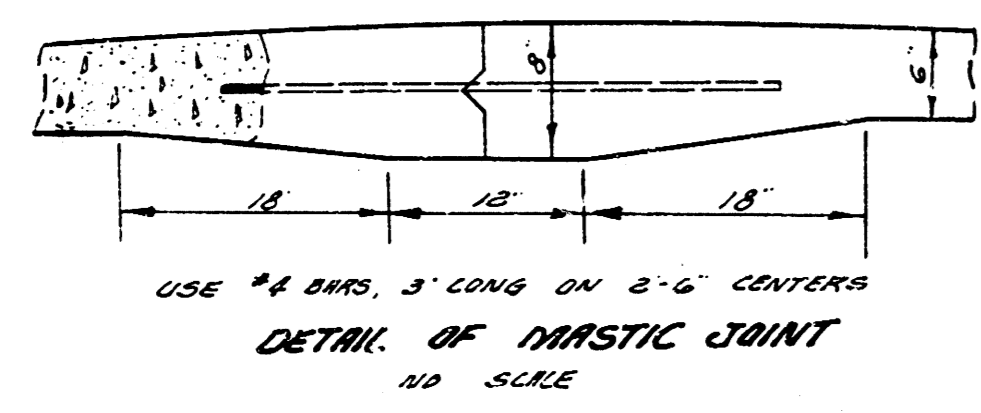


B.M. 121.51 5/4" DIA. CONG. PUNCH NO. 430 ROSS PARKWAY  
 CONTINUING E BASELINE ROAD S.W. 1/4 OF WHITNEY LN.



**NOTE:**  
 CONSTRUCT FULL CURB  
 FULL LENGTH & ACROSS END  
 @ 3/4" 2'-3".  
 ALL CURB ELEVATIONS SHOWN ARE  
 AT TOP OF FULL CURB.



EARTH WORK  
 ROAD DEPARTMENT  
 1900 S. G. H.  
 1911 S. G. H.  
 1913 S. G. H.

**WHITNEY LN.**  
 S.W. ROSS PARKWAY TO  
 30" CONC. & CB.  
 CITY OF WICHITA, KANSAS  
 B.E. SMITH, CITY ENGINEER  
 DATE SEPT. 1900 PROJ. NO. C13-224

