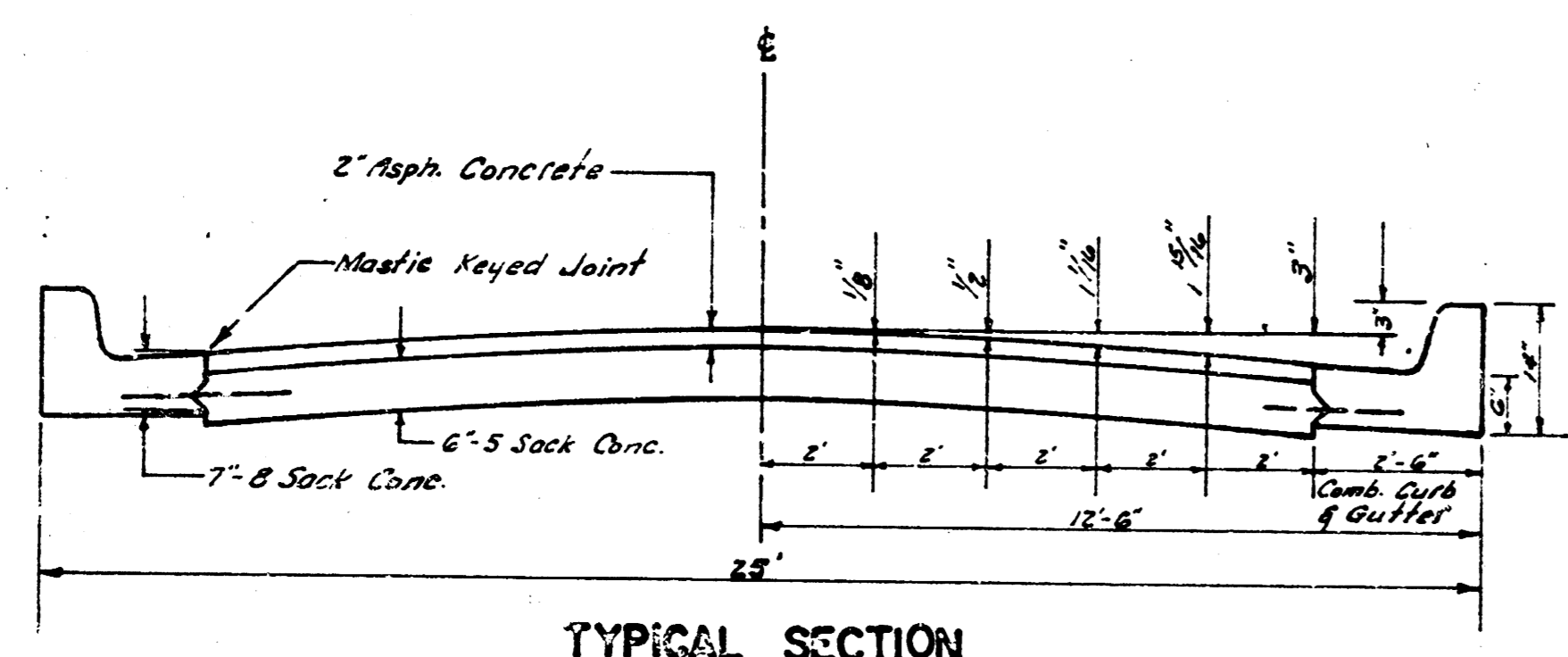


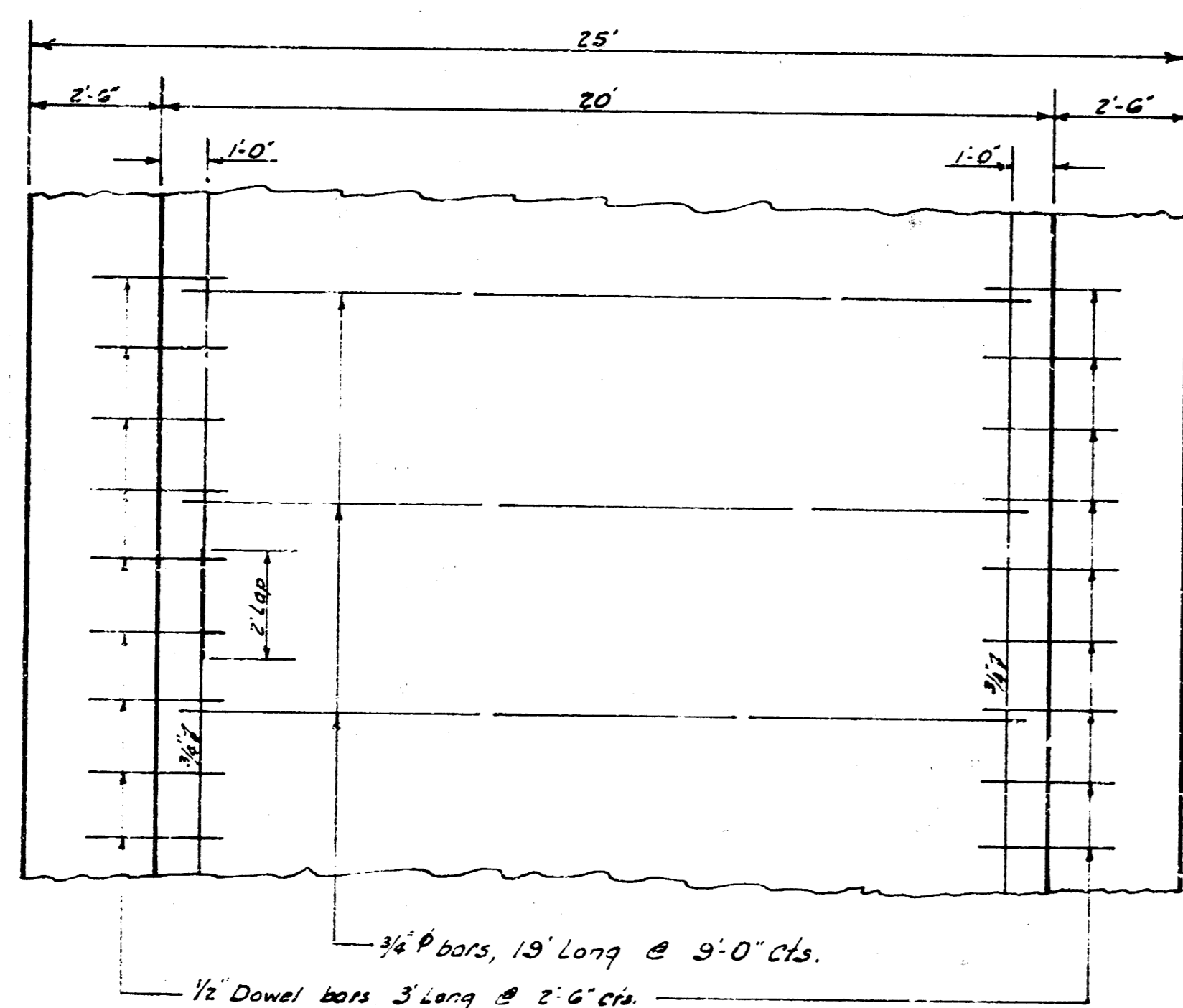
WILLIAM WATER STREET CONNECTION

B.E. SMITH CITY ENGINEER CITY OF WICHITA KANSAS

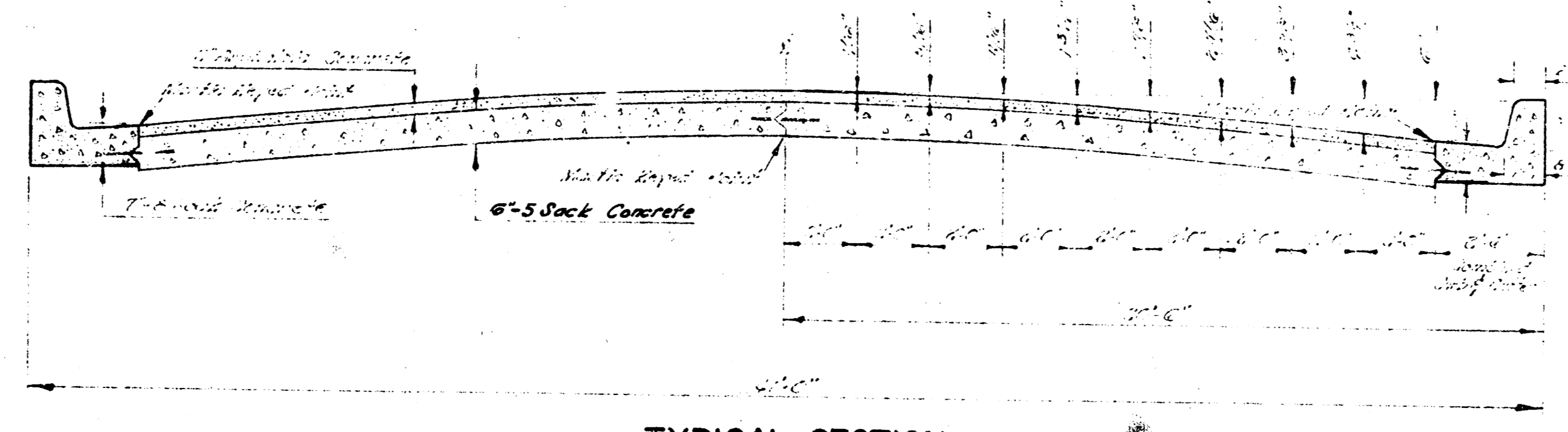
MA-1-100000
CIVIC CENTER URBAN RENEWAL
PROJECT KANSAS R-19
MARCH 1956



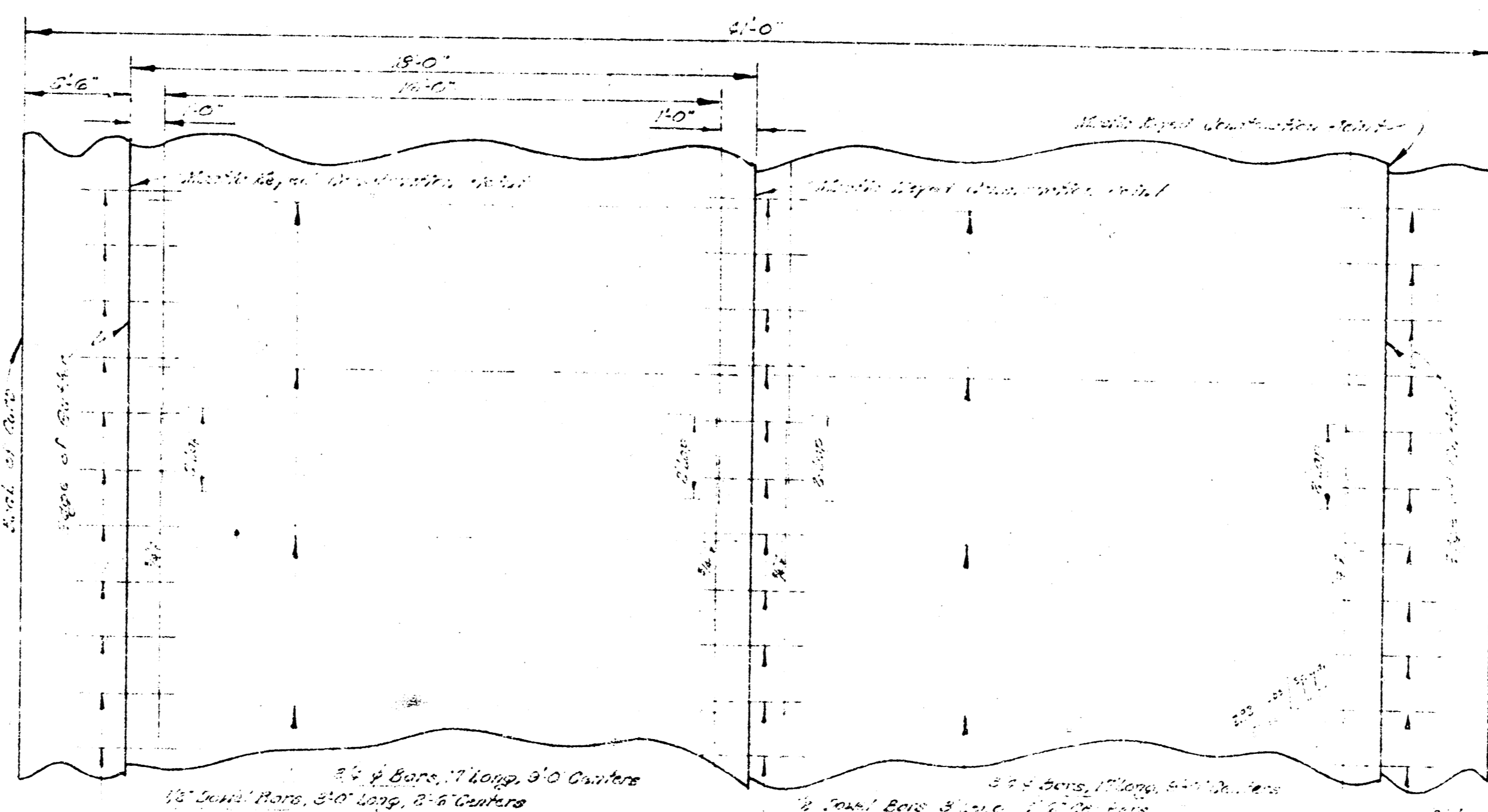
TYPICAL SECTION



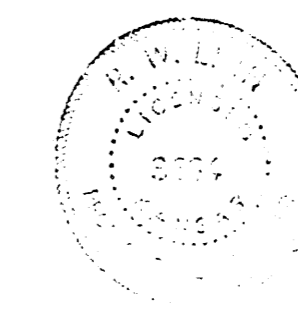
STEEL PATTERN
Not to Scale

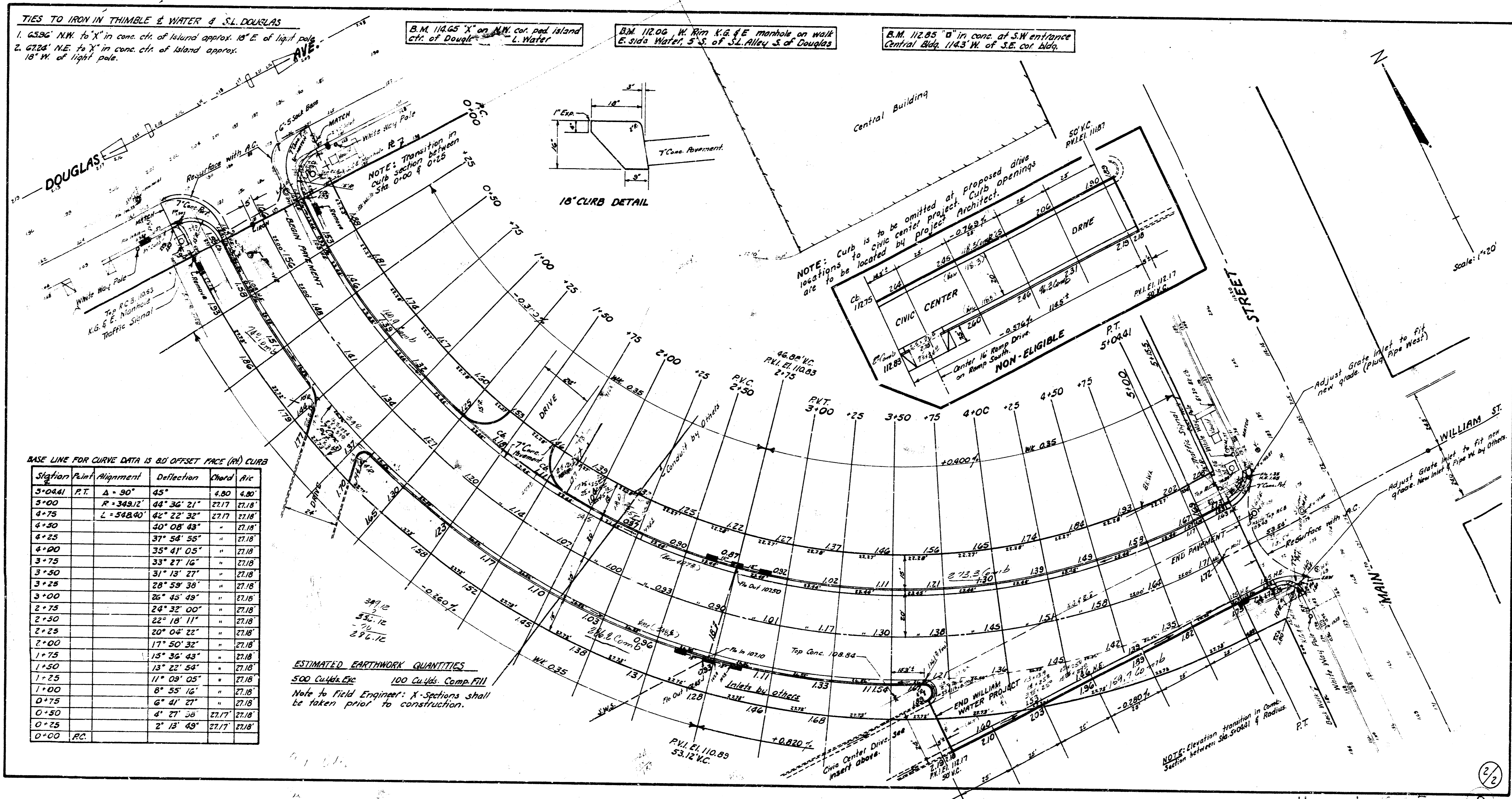


TYPICAL SECTION
NOT TO SCALE



STEEL PATTERN
USE 3/4" Ø BARS EXCEPT WHERE NOTED
NOT TO SCALE



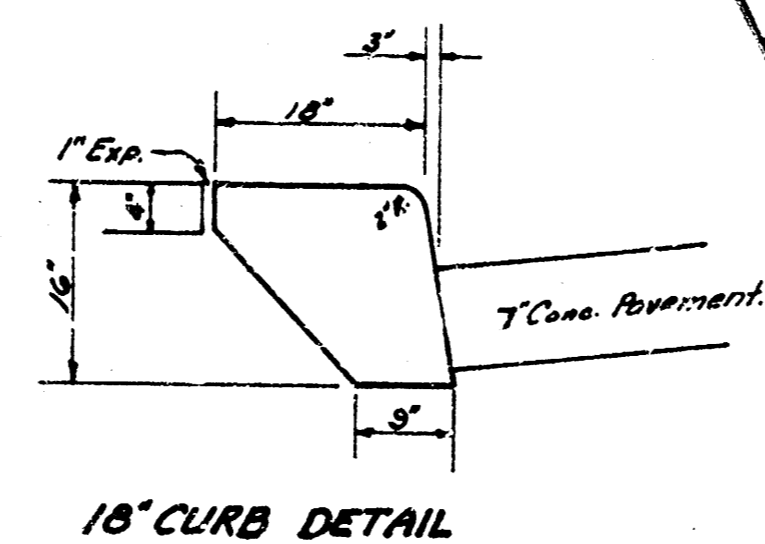


TIES TO IRON IN THIMBLE & WATER @ S.L. DOUGLAS
 1. 65.96' N.W. to 'X' in conc. ckt. of Island approx. 18' E. of light pole.
 2. 67.24' N.E. to 'X' in conc. ckt. of Island approx. 18' W. of light pole.

B.M. 114.65 'X' on NW cor. ped island ckt. of Douglas & L. Water

B.M. 112.06 'W' Rim K.G. & E. manhole on walk E. side Water, S.S. of S.L. Alley S. of Douglas

B.M. 112.85 'D' in conc. of S.W. entrance Central Bldg. 1143' W. of S.E. cor. bldg.



NOTE: Curb is to be omitted at proposed drive locations to be located by project Architect.

BASE LINE FOR CURVE DATA IS 80' OFFSET FACE (R) CURB

Station	Point	Alignment	Deflection	Chord	Arc
3+04.61	P.T.	$\Delta = 90^\circ$	45°	4.80	4.80
3+00		$R = 348.12'$	$44^\circ 36' 21''$	27.17	27.18
4+75		$L = 548.00'$	$42^\circ 22' 32''$	27.17	27.18
4+30			$30^\circ 08' 43''$	"	27.18
4+25			$37^\circ 54' 58''$	"	27.18
4+20			$35^\circ 41' 05''$	"	27.18
3+75			$33^\circ 27' 16''$	"	27.18
3+30			$31^\circ 13' 27''$	"	27.18
3+25			$28^\circ 59' 38''$	"	27.18
3+00			$26^\circ 45' 48''$	"	27.18
2+75			$24^\circ 32' 00''$	"	27.18
2+30			$22^\circ 18' 11''$	"	27.18
2+25			$20^\circ 04' 22''$	"	27.18
2+00			$17^\circ 50' 32''$	"	27.18
1+75			$15^\circ 36' 43''$	"	27.18
1+50			$13^\circ 22' 54''$	"	27.18
1+25			$11^\circ 09' 05''$	"	27.18
1+00			$8^\circ 55' 16''$	"	27.18
0+75			$6^\circ 41' 27''$	"	27.18
0+50			$4^\circ 27' 38''$	27.17	27.18
0+25			$2^\circ 13' 48''$	27.17	27.18
0+00	P.C.				

ESTIMATED EARTHWORK QUANTITIES
 500 Curb Etc. 100 Curb Comp. Fill
 Note to Field Engineer: X-Sections shall be taken prior to construction.