

PRIVATE STREETS IN WILLOWBEND FOURTH ADDITION

**MULBERRY CIRCLE: FROM INCLUDING CUL-DE-SAC
TO THE WEST LINE OF ROCK ROAD**

**PROJECT NO.
448-76-245-80001-000-000-131**

**CITY OF WICHITA, KANSAS
MICHAEL E. LINDEBAK, CITY ENGINEER
MARCH 1987**

GENERAL NOTES

1. THE CONTRACTOR SHALL BE RESPONSIBLE FOR PRESERVING PROPERTY IRONS. THE CONTRACTOR SHALL BE REQUIRED TO RE-ESTABLISH ANY PROPERTY IRONS WHICH ARE DAMAGED OR DESTROYED BY HIS CONSTRUCTION OPERATIONS. SUCH IRONS SHALL BE RE-ESTABLISHED BY A LICENSED LAND SURVEYOR OR A LICENSED PROFESSIONAL ENGINEER IN ACCORDANCE WITH STATE LAWS.
2. TRANSITION CURB FROM FULL HEIGHT COMBINATION CURB AND GUTTER TO ROLL TYPE COMBINATION CURB AND GUTTER IS TO BE PAID AS BID FOR LINEAL FEET COMBINED CURB AND GUTTER (3 5/8" ROLL).
3. CURB SHALL BE DEPRESSED THROUGH DRIVES (1 1/2"), WHERE ROLL TYPE CURB AND GUTTER IS CONSTRUCTED.
4. NO MORE THAN 5-20' DRIVEWAY APPROACHES OR THE EQUIVALENT TO BE CONSTRUCTED.
5. EXISTING UTILITIES AND THEIR LOCATIONS, AS SHOWN ON THE PLANS, REPRESENT THE BEST INFORMATION OBTAINABLE FOR DESIGN. LOCATION INFORMATION HAS BEEN OBTAINED FROM THE VARIOUS UTILITY COMPANIES AND IS EITHER FROM COMPANY RECORD DRAWINGS OR COMPANY PROVIDED FIELD LOCATIONS. THE PLAN LOCATIONS SHOWN ARE NOT GUARANTEED. ADDITIONAL EXISTING UTILITIES MAY ALSO BE ENCOUNTERED.
6. ALL WORK TO BE DONE ACCORDING TO CITY OF WICHITA SPECIFICATIONS.
7. CONTRACTOR WILL BE REQUIRED TO PROVIDE A MINIMUM ADVANCE NOTICE OF TWENTY-FOUR (24) HOURS TO UTILITY COMPANIES PRIOR TO STARTING ANY EXCAVATION AS FOLLOWS:

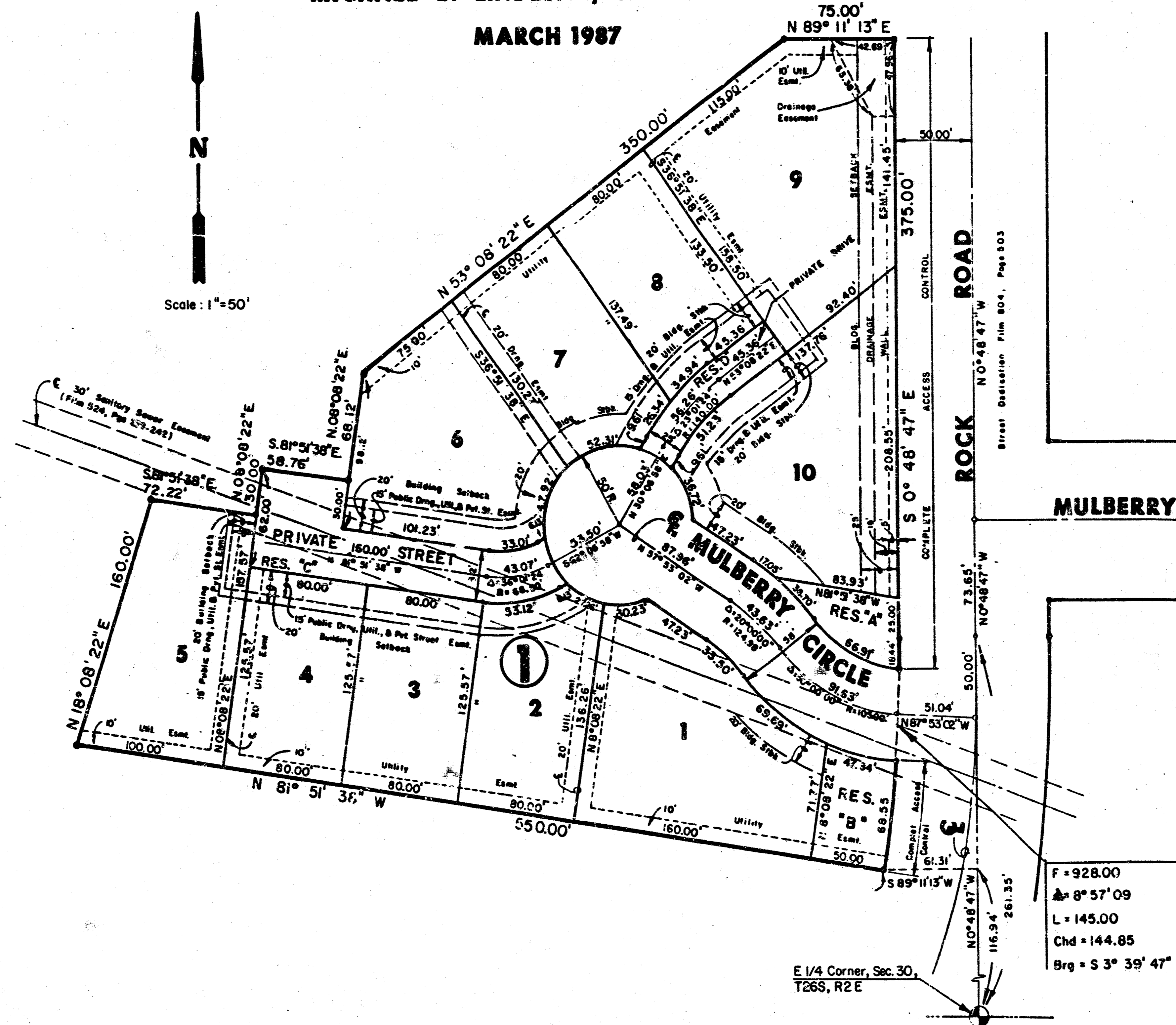
ARKLA GAS COMPANY 942-8350 or 263-8161
 BELL TELEPHONE COMPANY 1-316-571-2811
 CABLEVISION 262-4270 or 263-2061
 KPL GAS SERVICE 263-7511
 KANSAS GAS & ELECTRIC 264-1141
 CITY OF WICHITA WATER DEPARTMENT 268-4908
 CITY OF WICHITA SEMER DEPARTMENT 268-4071

BENCH MARKS

- BM 1: City Standard, 44' S & 48' W of C. of 37th St. No. & Rock Road
 Elev. = 204.11
 BM 2: "C" Cut on NE corner of RCB ± 900' N. of E 1/4 corner, Sec. 30, T26S, R2E
 Elev. = 185.36
 BM 3: "C" Cut on SW corner of W Hubguard of Underground Golf Cart Path

INDEX TO DRAWINGS

SHEET NO.	DESCRIPTION
1	Title Sheet
2-3	Paving Details
4	Mulberry Circle
5	Reserves 'C' & 'D'
6	Final Plat

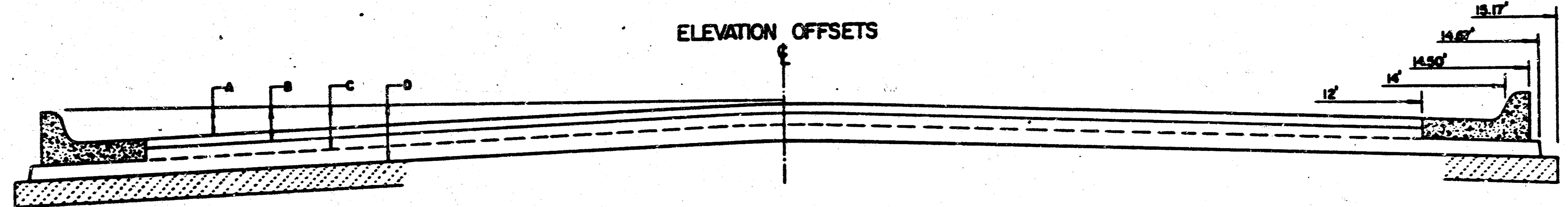
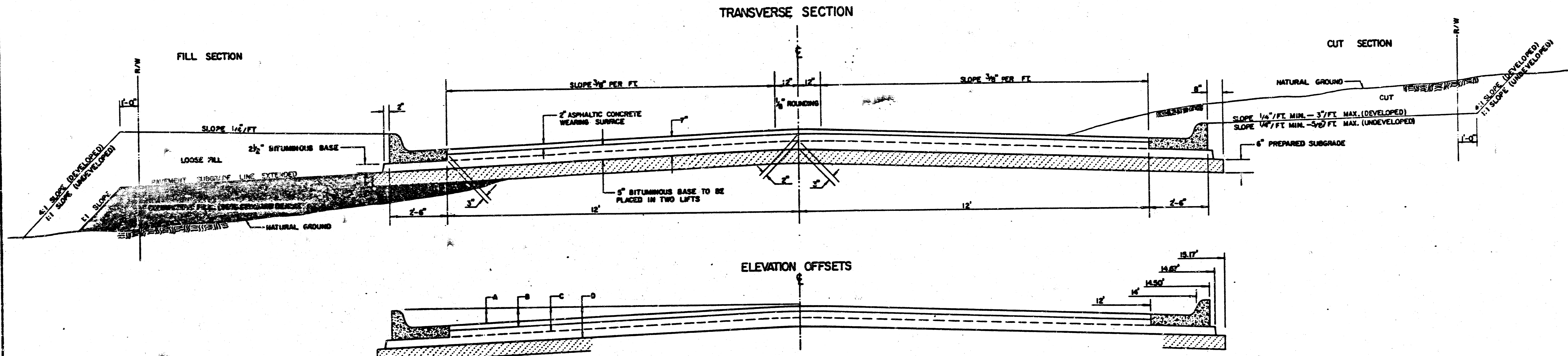


F = 928.00
 L = 145.00
 Chd = 144.85
 Brg = S 3° 39' 47" W

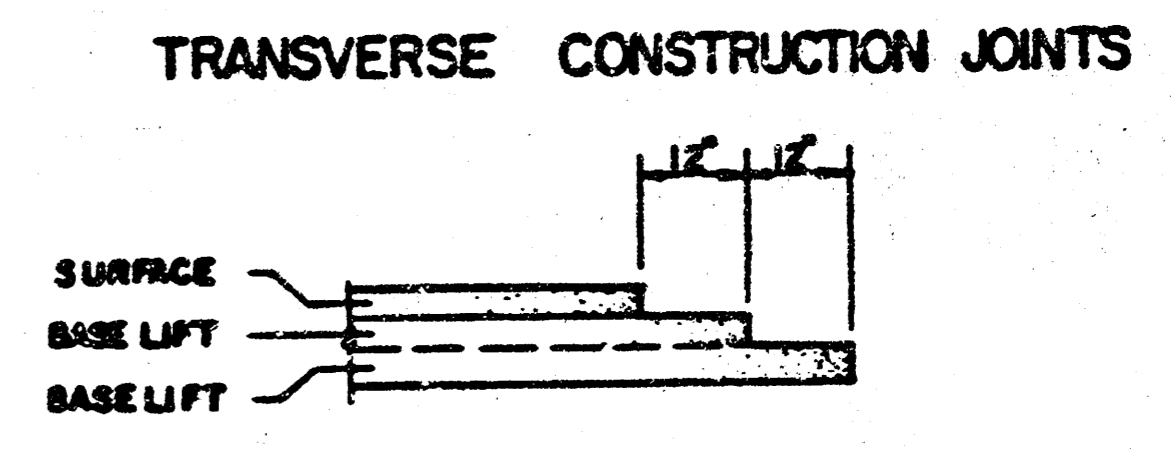
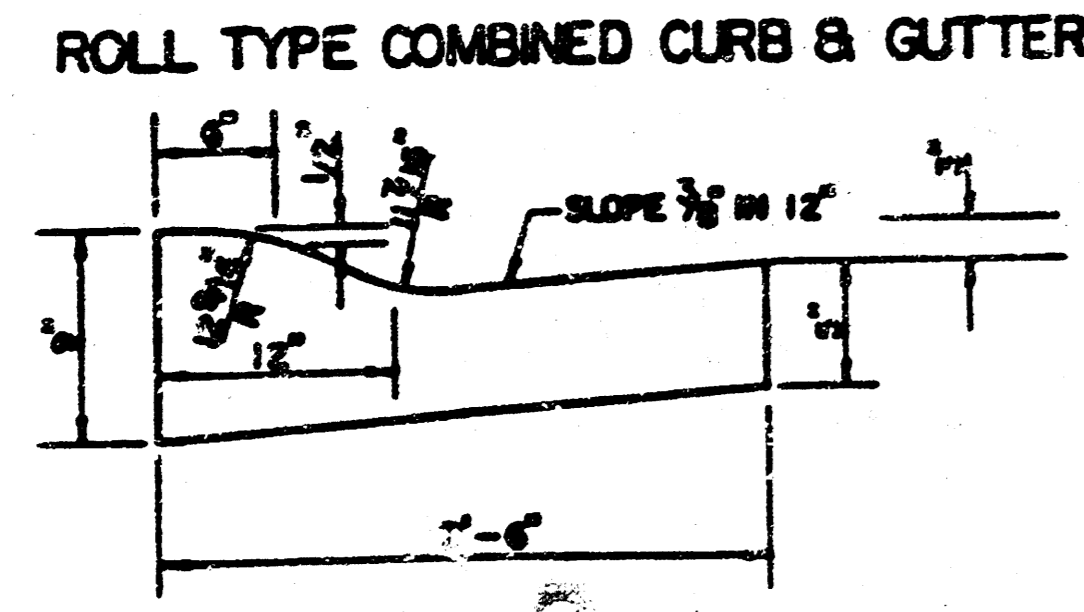
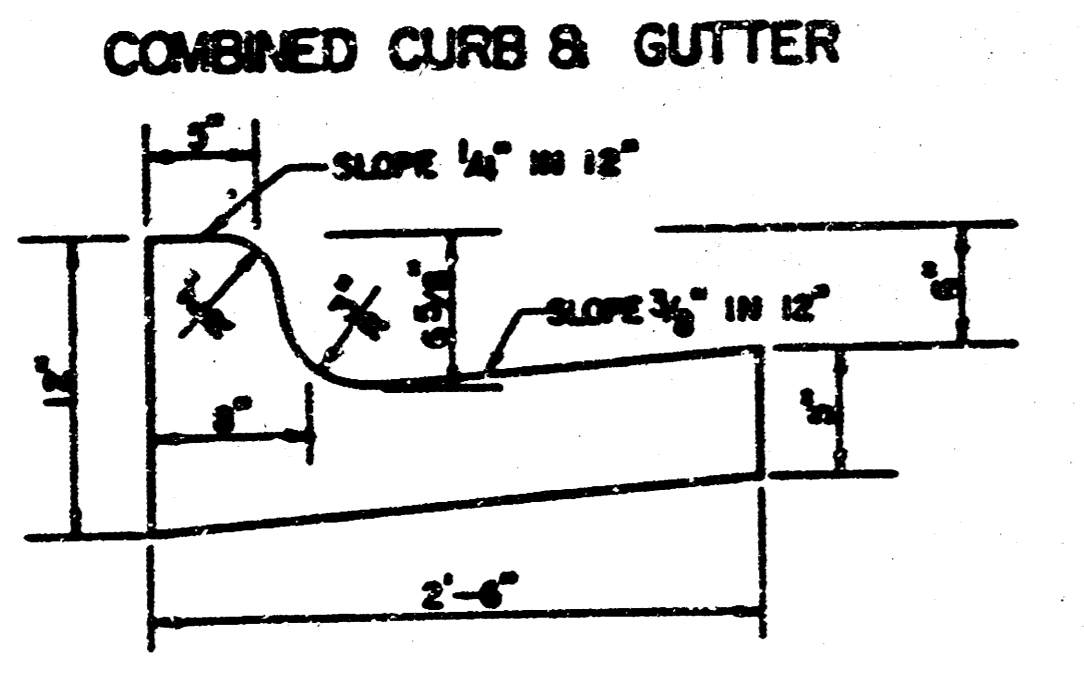
WILLOWBEND FOURTH ADDITION	PAVING PLANS	Design: KKL DDG/DPR Checked by: Date: Job no:
	MID-KANSAS ENGINEERING CONSULTANTS P.A. 3500 NORTH ROCK ROAD BUILDING #800 WICHITA, KANSAS 67226	
SHEET NO. 1 OF 6 1/6		682-6561

FILMED FROM THE BEST
AVAILABLE COPY

TYPICAL 29' PAVEMENT DETAILS



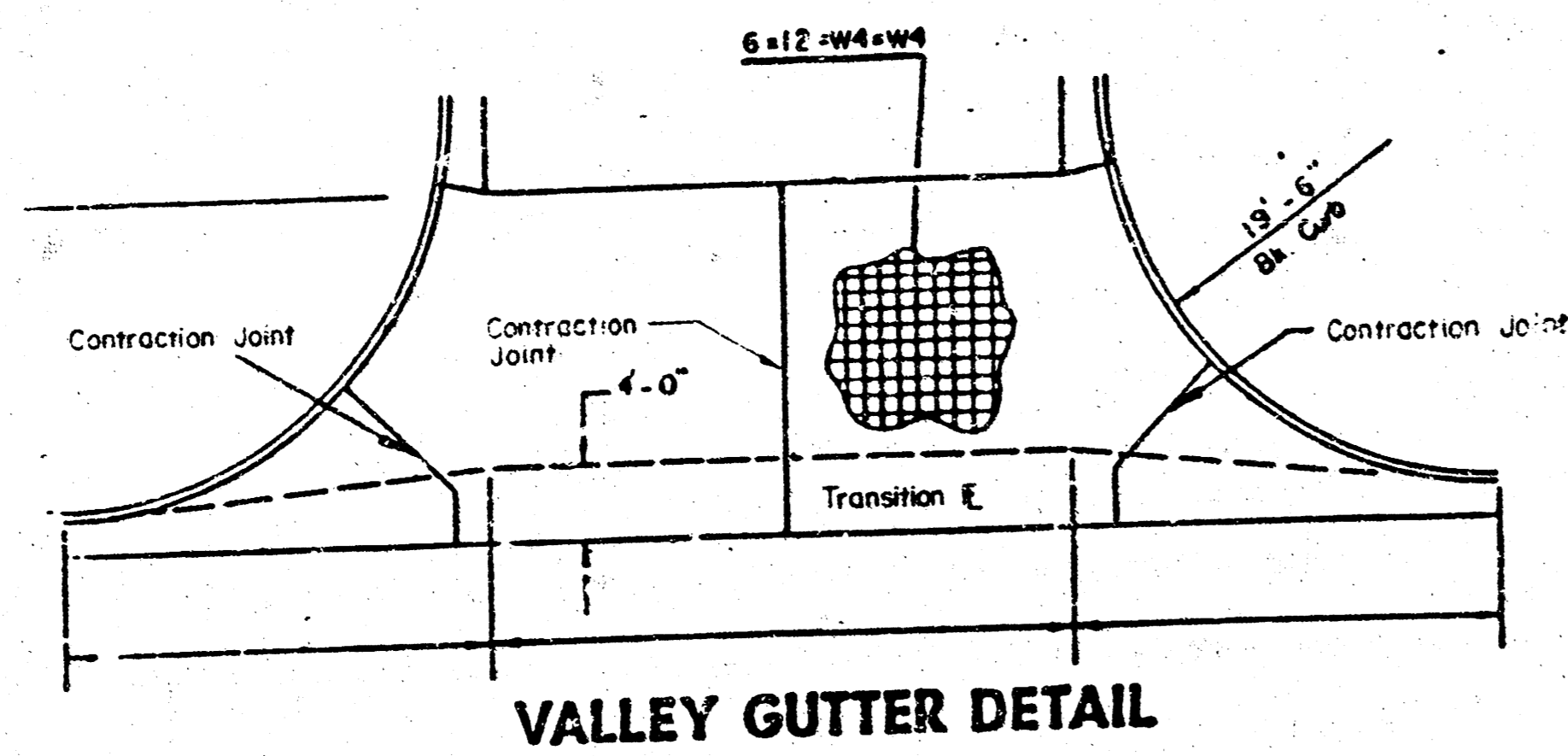
	DISTANCE FROM CENTERLINE (LX & RT)											
	0'	2'	4'	6'	7'	8'	10'	12'	14'	14.5'	14.87'	15.17'
A. TOP OF CURBS TO TOP OF SURFACE LIFT	0.13	0.16	0.24	0.30	0.33	0.36	0.43	0.49	—	—	—	—
B. TOP OF CURBS TO TOP OF UPPER BASE LIFT	0.30	0.30	0.41	0.47	0.50	0.53	0.60	0.66	—	—	—	—
C. TOP OF CURBS TO TOP OF LOWER BASE LIFT	0.47	0.52	0.60	0.68	0.71	0.75	0.83	0.90	0.98	1.00	1.01	—
D. TOP OF CURBS TO TOP OF SUBGRADE	0.72	0.77	0.84	0.91	0.94	0.98	1.05	1.12	1.19	1.21	1.21	1.23



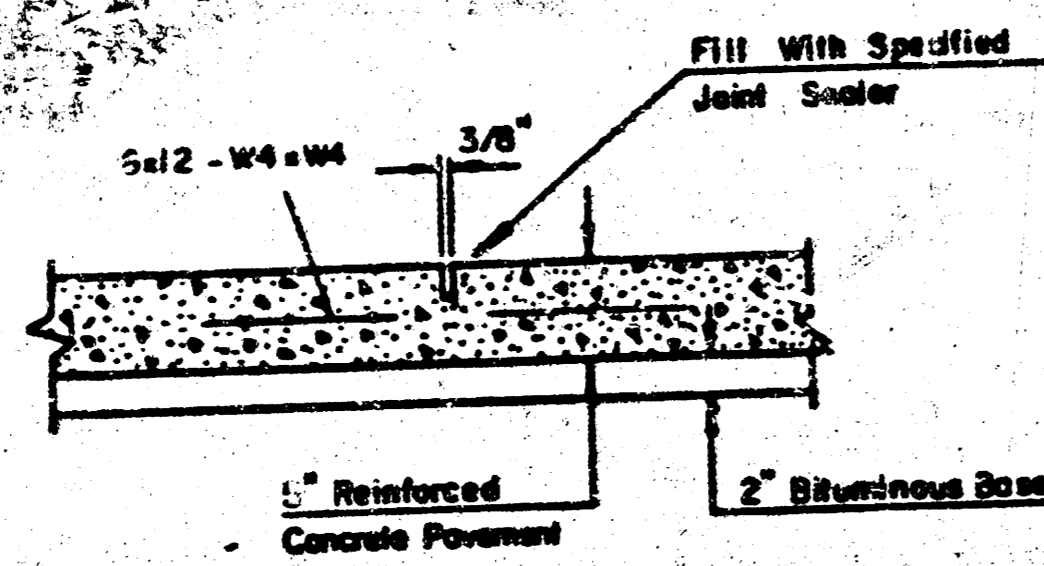
- GENERAL NOTES**
- 1) THE ASPHALTIC CONCRETE PAVEMENT BETWEEN THE COMBINED CURB AND GUTTER SHALL BE PAID AS SQUARE YARDS OF 7" ASPHALTIC CONCRETE (2" BITUMINOUS BASE).
 - 2) THE BITUMINOUS BASE UNDER AND BEHIND THE COMBINED CURB AND GUTTER SHALL BE PAID AS SQUARE YARDS OF 1/2" BITUMINOUS BASE.
 - 3) A TACK COAT OF DENSIFIED ASPHALT (DC-1H OR CS-1H) SHALL BE APPLIED AT AN APPROXIMATE RATE OF 0.05 GALLONS PER SQUARE YARD BETWEEN EACH LIFT OF ASPHALTIC MATERIAL.
 - 4) BITUMINOUS BASE AND ASPHALTIC CONCRETE WEARING SURFACE SHALL BE PLACED WITH A LAYDOWN MACHINE HAVING AUTOMATIC CONTROLS FOR LINE AND GRADE.
 - 5) CONSTRUCTION JOINTS IN EACH LIFT SHALL BE STAGGERED A MINIMUM DISTANCE OF ONE (1) FOOT FROM JOINTS IN PRECEDING LIFTS AND PLACED SO THAT A JOINT WILL BE CONSTRUCTED ON THE CENTERLINE OF THE TOP LIFT.
 - 6) CONTRACTOR TO BID ONLY ONE SUBGRADE TREATMENT ALTERNATE WHEN ALTERNATES ARE PROVIDED IN THE SPECIFICATIONS AND CONTRACT. THE ALTERNATE CHOSEN BY THE SUCCESSFUL BIDDER SHALL BE USED IN CONSTRUCTING THIS PROJECT.

7 INCH RESIDENTIAL ASPHALTIC CONCRETE PAVEMENT WITH 5 INCH BITUMINOUS BASE
 CITY OF WICHITA, KANSAS
 PROJECT NUMBER
 448-76-245-80001-000-000-131

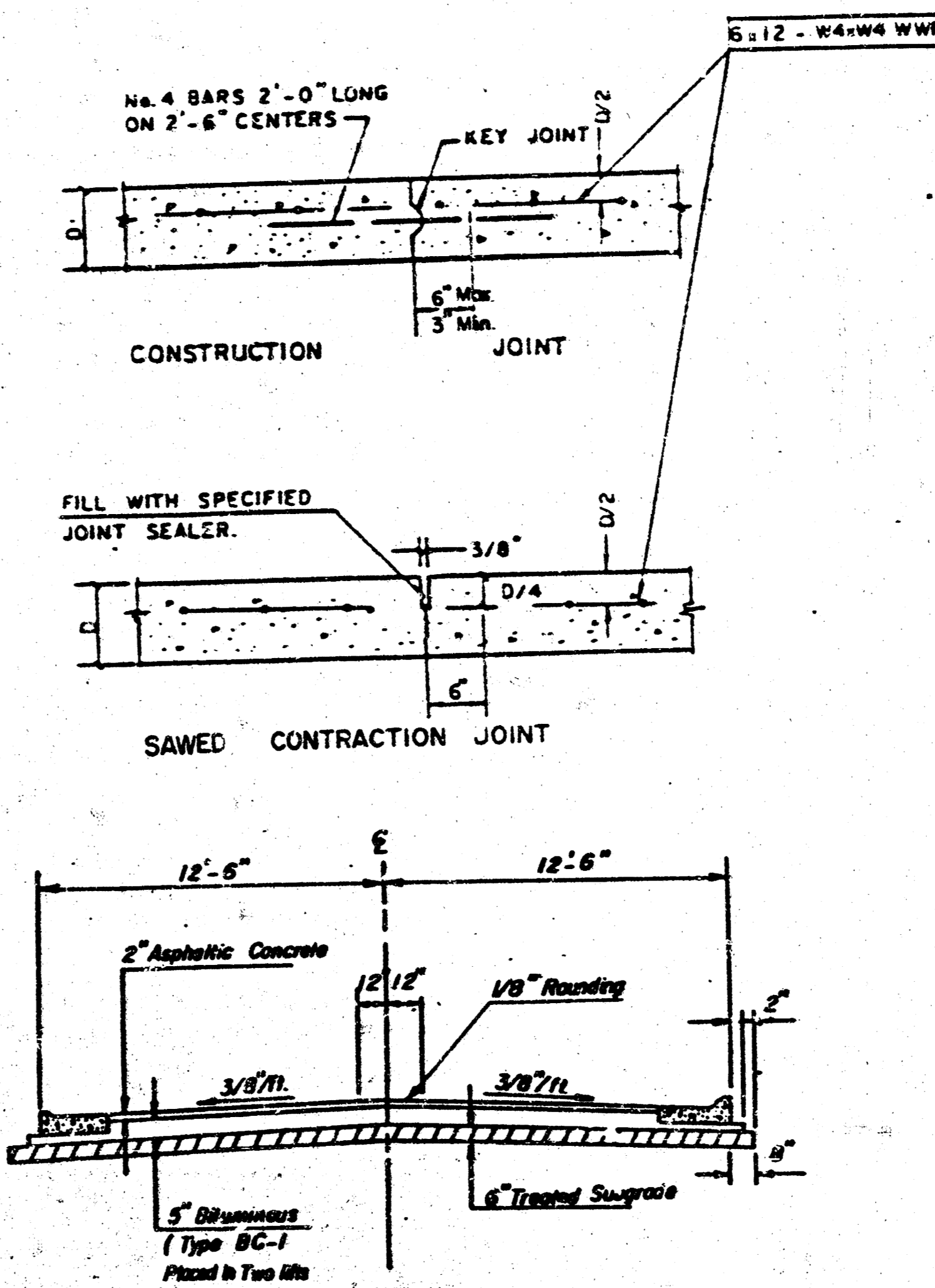
FILMED FROM THE BEST AVAILABLE COPY



VALLEY GUTTER DETAIL

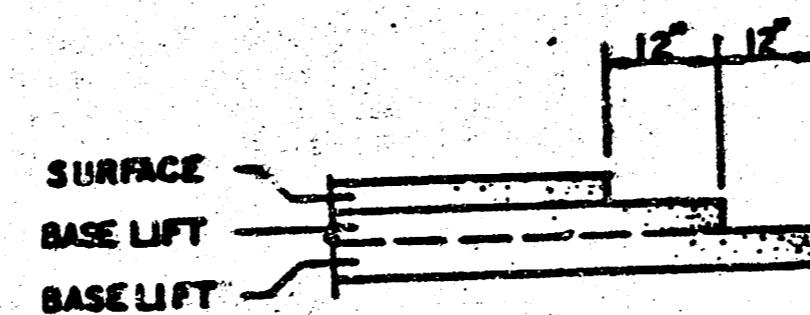


7" REINF. VALLEY GUTTER PAVEMENT



TYPICAL 25' R.B. SECTION

TRANSVERSE CONSTRUCTION JOINTS

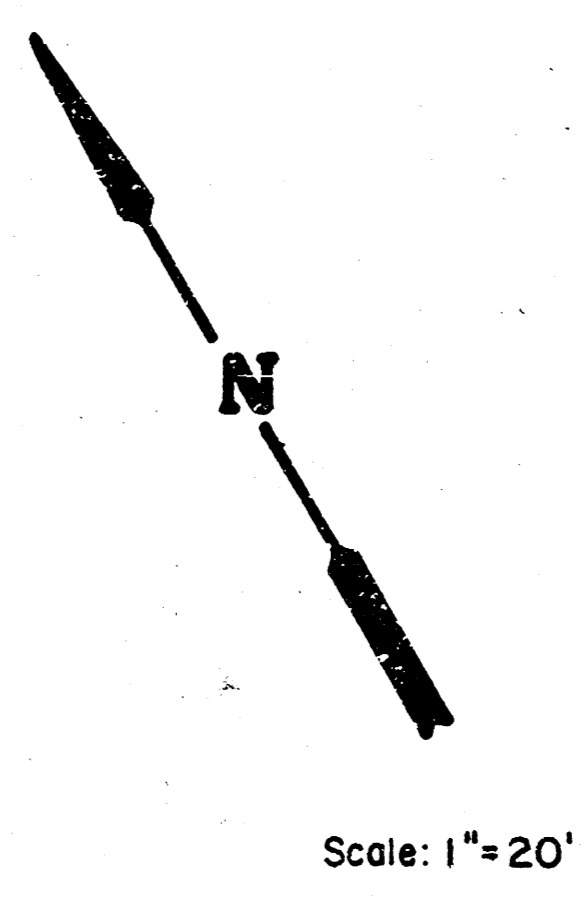
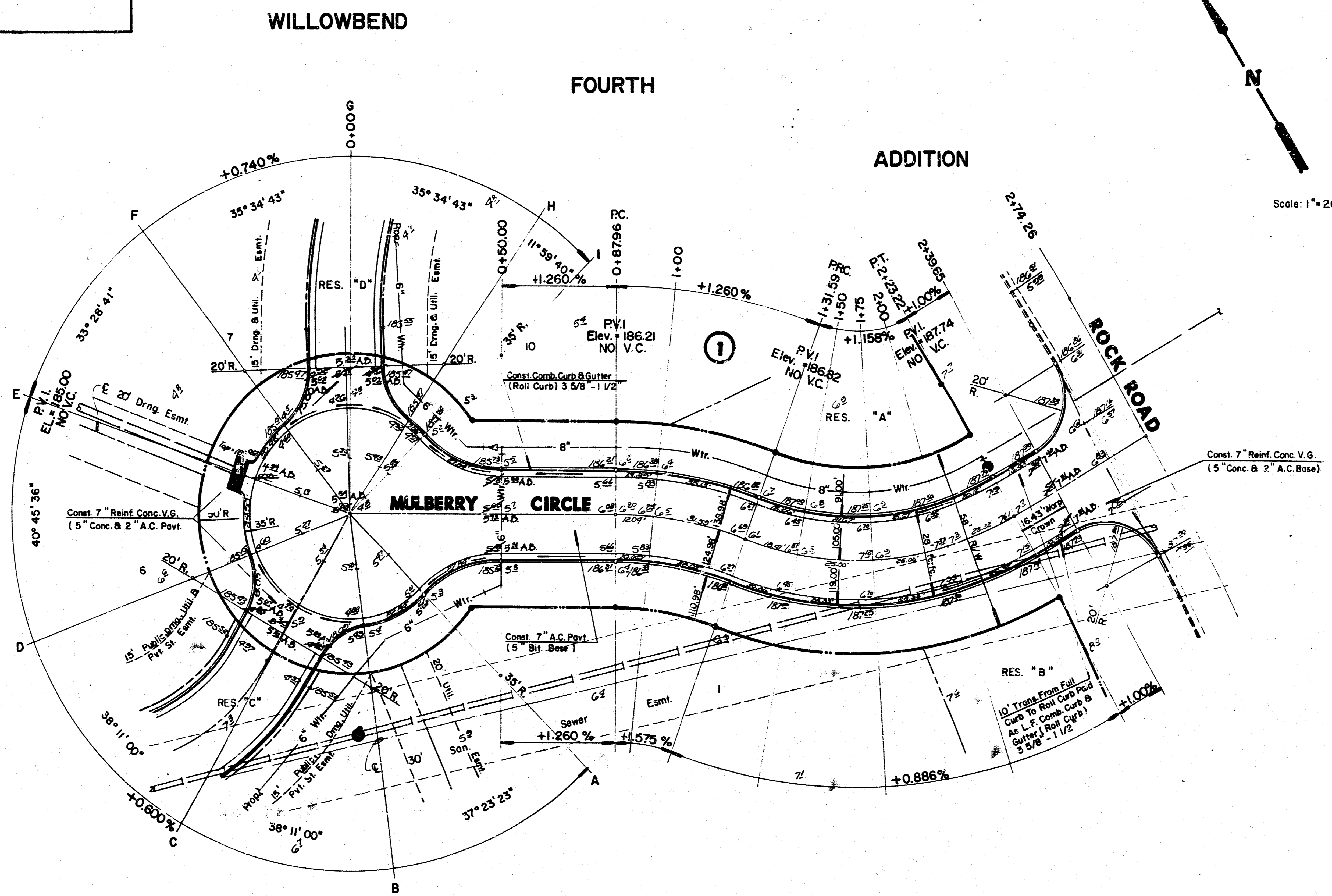


TRANSVERSE CONSTRUCTION JOINTS SHALL BE CONSTRUCTED IN FLEXIBLE BASE PAVEMENTS AT LOCATIONS WHERE CONVENT JOINS EXISTING FLEXIBLE BASE PAVEMENT AS SHOWN BY THE DETAIL. ALL COSTS ASSOCIATED WITH THE CONSTRUCTION OF THE TRANSVERSE JOINT SHALL BE INCLUDED IN THE BID PRICE FOR SQUARE YARDS 7" ASPHALTIC CONCRETE (5" BITUMINOUS BASE).

	DETAILS	FF
		KHB
MID-KANSAS ENGINEERING CONSULTANTS PA 240 NORTH ROCK ROAD SUITE 130 WICHITA, KANSAS 67206		3 3/4 6 1/4
682-6561		

FILMED FROM THE BEST AVAILABLE COPY

NOTE:
 Top Of Curb Elevations Shown For
 Full Curb, Construct Combined Curb
 & Gutter (Roll Type).



	CITY OF WICHITA	KKL Drawn by DPR
	MULBERRY CIRCLE	Date No.
	PROJECT NO. 448-76-245-80001-000-000-131	Sheet 4 of 6
MID-KANSAS ENGINEERING CONSULTANTS PA 3500 NORTH ROCK ROAD BUILDING 1800 WICHITA, KANSAS 67226		682-6561

FILMED FROM THE BEST
 AVAILABLE COPY

FINAL PLAT OF WILLOWBEND FOURTH ADDITION

AN ADDITION TO WICHITA, SEDGWICK COUNTY, KANSAS

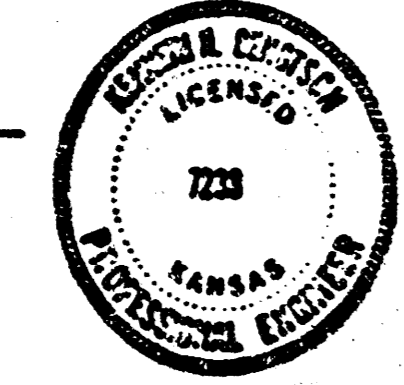
I, Kenneth M. Bengtson, a Civil Engineer in Kansas, do hereby certify that I have been in responsible charge of surveying and platting of "WILLOWBEND FOURTH ADDITION" an addition to Wichita, Sedgwick County, Kansas, into Lots, Blocks, Street, and Reserves, the same being accurately set forth in the accompanying plat and described as follows:

A tract of land lying in the Northeast Quarter, Section 30, Township 26 South, Range 2 East of the 6th P.M., more particularly described as follows:

Commencing from the Southeast corner of said Northeast Quarter; thence N 0° 43' 47" W, 116.94 feet; thence S 89° 11' 13" W, 61.31 feet to the point of beginning; thence N 81° 51' 38" W, 550.00 feet; thence N 18° 08' 22" E, 160.00 feet; thence S 81° 51' 38" E, 72.22 feet; thence N 08° 08' 22" E, 30.00 feet; thence S 81° 51' 38" E, 58.76 feet; thence N 08° 08' 22" E, 68.12 feet; thence S 81° 51' 38" E, 350.00 feet; thence N 89° 11' 13" E, 75.00 feet; thence S 00° 48' 47" E, 375.00 feet to a point on a curve to the right; thence 145.00 feet along said curve having a central angle of 08° 57' 09", a radius of 928.00 feet, and a long chord of 144.85 feet, bearing S 03° 39' 47" W to the point of beginning.

I hereby certify that the details of this plat are correct to the best of my knowledge and belief this 25 day of November, 1986.

Kenneth M. Bengtson
Kenneth M. Bengtson, P.E.
Mid-Kansas Engineering Consultants, P.A.
3500 N. Rock Road, Building 800
Wichita, KS 67226



Know all men by these presents that the undersigned property owners of the land as above set forth in the Civil Engineers Certificate, have caused the same to be surveyed and platted into Lots, a Block, Reserves and a street, the same to be known as "WILLOWBEND FOURTH ADDITION", an addition to Wichita, Sedgwick County, Kansas. The street is hereby dedicated to and for the use of the public. Reserves are platted for the construction and maintenance of public utilities and drainage. Reserves "A" and "B" are also platted for entrance monuments, landscaping and open spaces. Reserve "C" is also platted for private street and emergency vehicle access. Reserve "D" is also platted as a private drive to serve Lots 7, 8, 9, and 10, Block 1. The Reserves shall be owned and maintained by the Homeowners Association. Easements for the construction and maintenance of private streets, public utilities and drainage, as indicated on the accompanying plat, are hereby granted. The well easement is hereby platted for the purpose of construction and maintenance of a private wall. All egress rights of access to and from Rock Road over and across the East line of Lots 9 and 10 and Reserves "A" and "B" are hereby granted to the City of Wichita, Kansas.

GOLF COURSES OF AMERICA, INC.
By: *Frank A. Mills*
Frank A. Mills, President

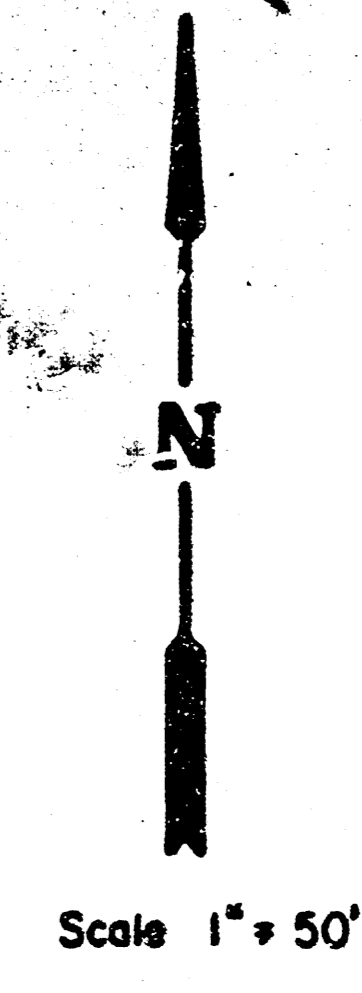
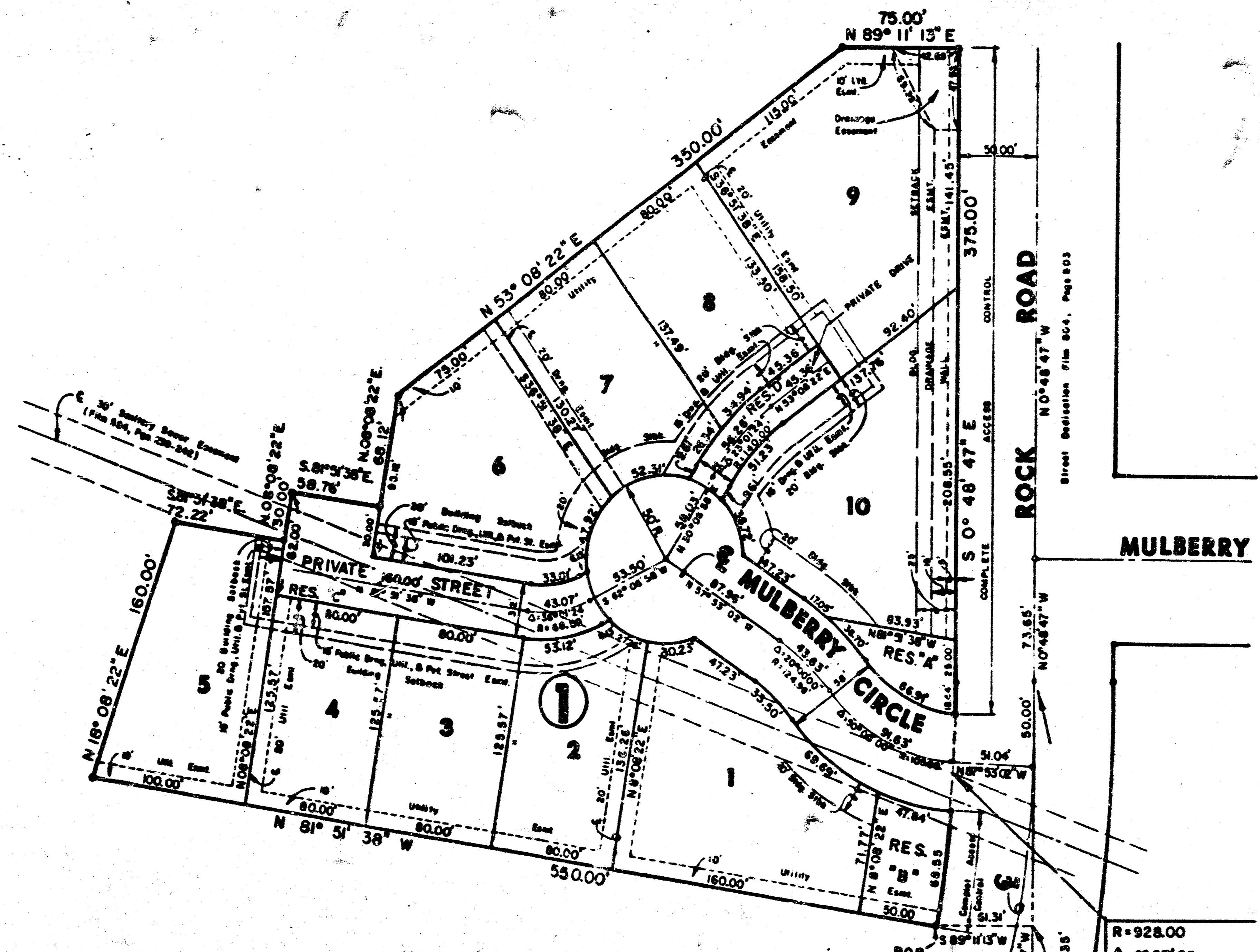
STATE OF KANSAS
SEDGWICK COUNTY ss:
Be it remembered that on this 25th day of November, 1986, before me a Notary Public in and for said State and County, came Golf Courses of America, Inc. by Frank A. Mills, President, to me personally known to be the same person who executed the foregoing instrument of writing and duly acknowledged the execution of the same. In testimony whereof I have hereunto set my hand and affixed my notarial seal the day and year above written.

John L. Korb Notary Public
My Appointment Expires: *June 2, 1988*

We, the Bank Audi (USA), mortgagees on the above described property, do hereby consent to the plat of "WILLOWBEND FOURTH ADDITION".
BANK AUDI (USA)
By: *Phillip S. Frick*
Phillip S. Frick, Attorney-in-Fact

STATE OF KANSAS
SEDGWICK COUNTY ss:
Be it remembered that on this 25th day of November, 1986, before me a Notary Public in and for said State and County, came Phillip S. Frick, Attorney-in-Fact on behalf of Bank Audi (USA), to me personally known to be the same person who executed the foregoing instrument of writing and duly acknowledged the execution of the same. In testimony whereof I have hereunto set my hand and affixed my notarial seal the day and year above written.

Patricia L. Wassinger
Patricia L. Wassinger, Notary Public
My Appointment Expires: *June 2, 1988*



This plat of "WILLOWBEND FOURTH ADDITION" has been submitted to and approved by the Wichita-Sedgwick County Metropolitan Area Planning Commission, Wichita, Kansas.
Dated this 13th day of November, 1986.

WICHITA-SEDGWICK COUNTY METROPOLITAN AREA PLANNING COMMISSION
John Jerry Moore Chairman
Phillip S. Frick Secretary
Wichita, Kansas

STATE OF KANSAS
SEDGWICK COUNTY ss:
This is to certify that this instrument was filed for record in the Register of Deeds office this 13th day of December, 1986.

Pat Lester Register of Deeds
Ed Ross Deputy

This plat approved and all dedications shown hereon, if any, accepted by the City Commission of the City of Wichita, Kansas, this 27th day of December, 1986.

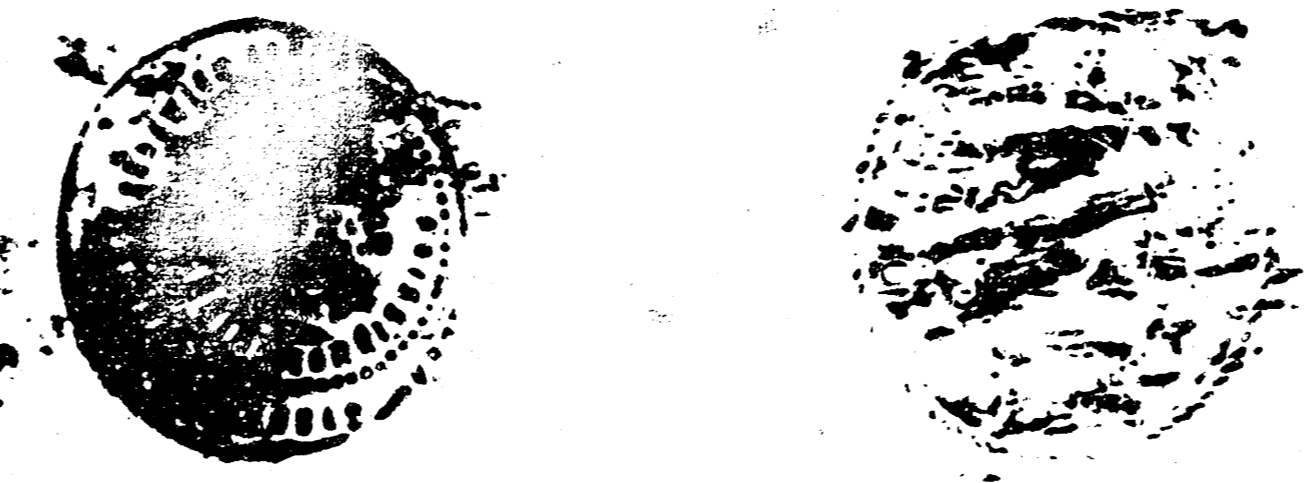
Tony Casado Mayor
Calvin E. Davis City Clerk

Entered on transfer record this 10th day of December, 1986.
Pat Lester County Clerk

R = 928.00
Δ = 8° 57' 09"
L = 145.00
Chd = 144.85
Brg = S 3° 39' 47" W

E 1/4 Corner, Sec. 30
T26S, R2E, 6th PM

252-770



20.00