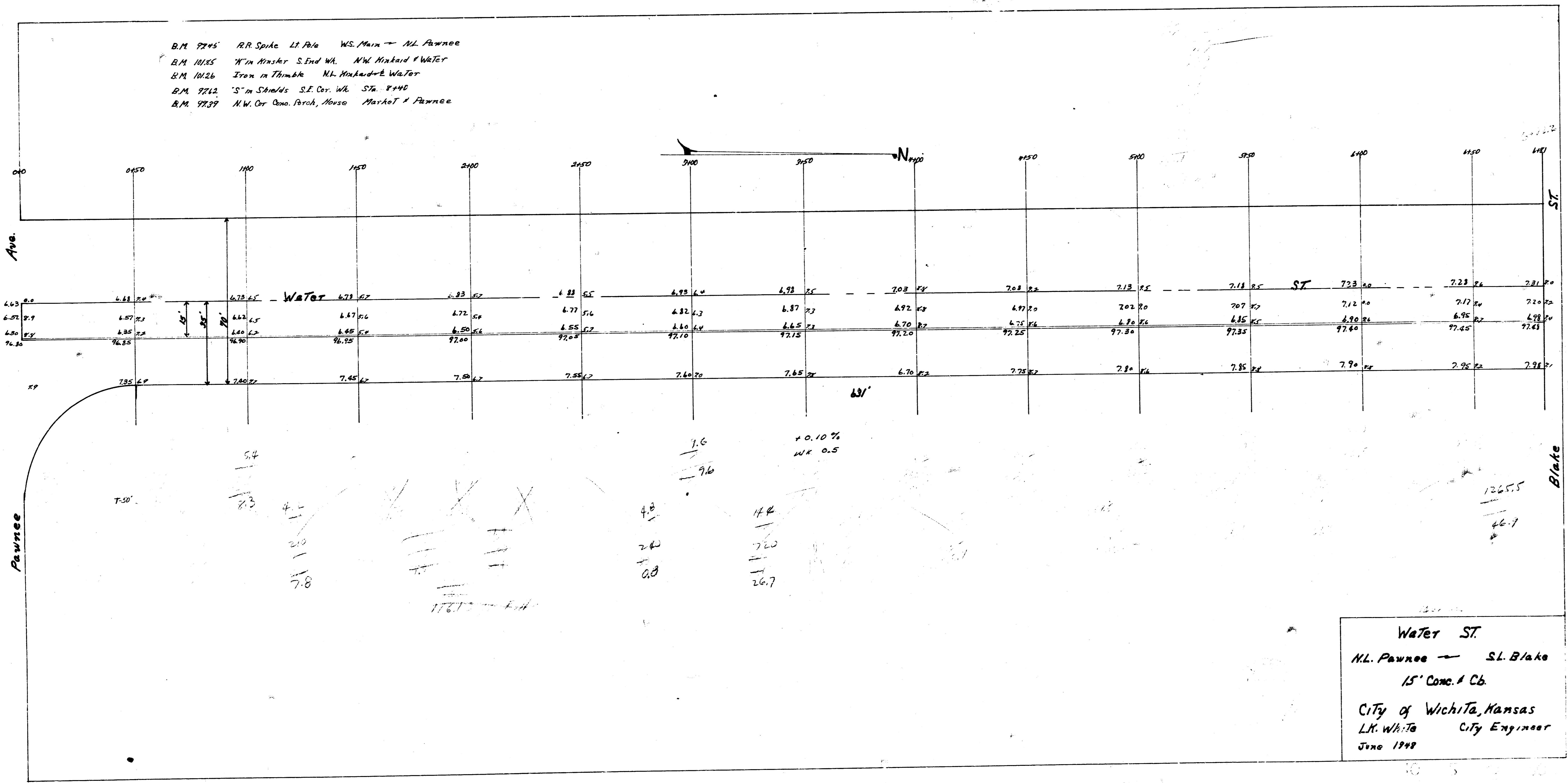


B.M. 9745 R.R. Spike Lt. Pole WS. Main - M.L. Pawnee
 B.M. 10185 N. in Kinsler S. End W.L. N.W. Minkard & Water
 B.M. 10126 Iron in Thimble N.L. Minkard & Water
 B.M. 9712 S. in Shields S.E. Cor. W.L. S.W. 8+40
 B.M. 9739 N.W. Cor. Ques. Porch, House Market & Pawnee



Water ST.
 M.L. Pawnee - S.L. Blake
 15" Conc. & Cb.
 City of Wichita, Kansas
 L.H. White City Engineer
 June 1948