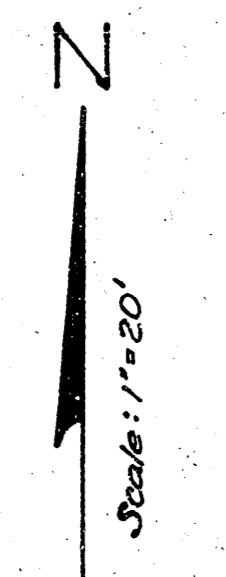
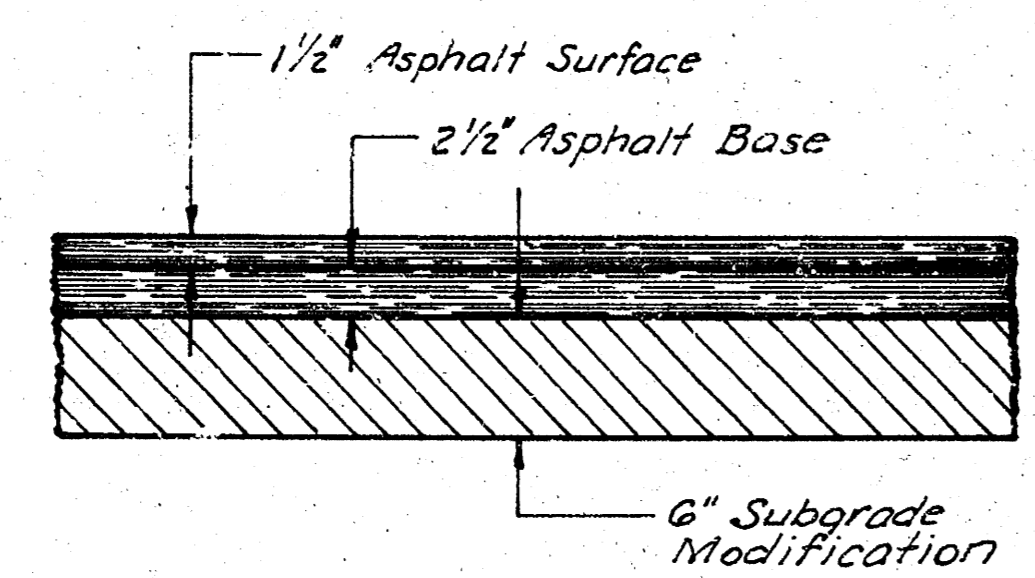


Survey by D.L. ...  
 Checked by ...



B.M. 11578 Surface of conc base on south side flag pole, adjacent to flag pole on west side Minnesota, north of 9th Street in entrance way to Wichita-Sedgwick Co. Department of Community Health.

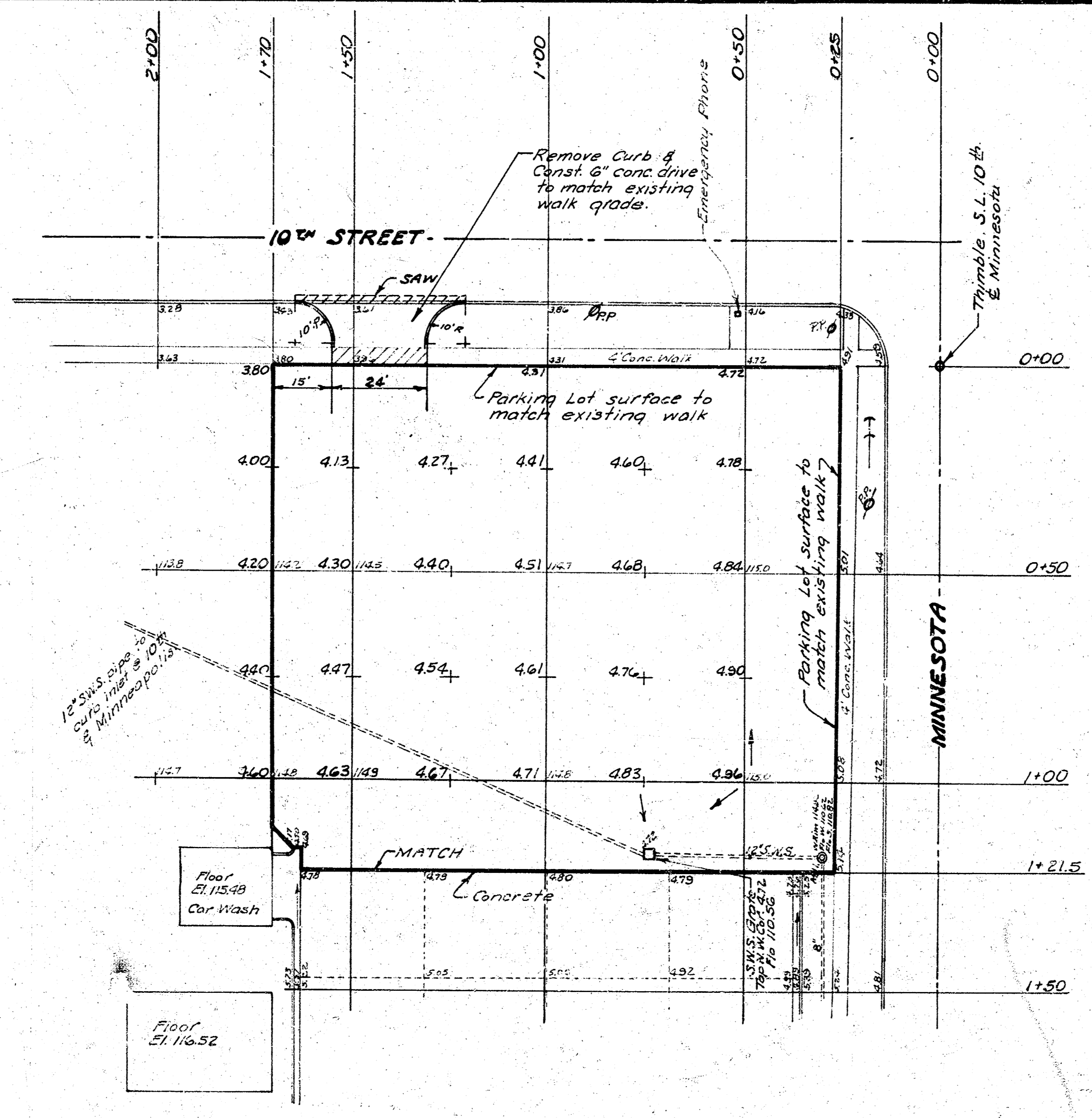


TYPICAL SECTION  
 No Scale

The following Bill of Materials are estimated quantities only. The contractor shall have full responsibility for providing all materials necessary as shown on detailed plans or as stated in related specifications to complete the project.

BILL OF MATERIALS		
Quantity	Unit	Item
1960	Sq.Yds.	Asph. Conc. Pavement
470	Sq. Ft.	5" Conc. Drive
35	Lin. Ft.	Separate Curb
50	Lin. Ft.	Sawed Joint
10	Sq.Yds.	Pavement Removed
130	Sq. Ft.	Walk Removed
330	Cu.Yds.	Subgrade Modification
300	Cu.Yds.	Excavation
35	Sq. Ft.	4" Walk

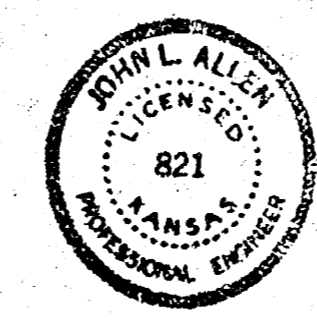
NOTE TO CONTRACTOR  
 This project will be constructed under the supervision of the CITY ENGINEER and contractor to the SPECIFICATIONS of the CITY OF WICHITA. The OWNER TRACOR will reimburse the City of Wichita for all cost of Engineering, Plans, and Inspection.



NOTE TO CONTRACTOR  
 This project will be constructed under the supervision of the CITY ENGINEER and contractor to the SPECIFICATIONS of the CITY OF WICHITA. The OWNER TRACOR will reimburse the City of Wichita for all cost of Engineering, Plans, and Inspection.

GENERAL NOTES

1. The existing sand-gravel surface to be removed and salvaged by the Health Department.
2. Contractor to excavate & or compact fill.
3. Subgrade modification to be used as per City Specifications. The contractor shall coordinate the subgrade modification operations with the Health Department. This Department will furnish and apply a weed killer solution.
4. Construct a 4" Asph. Conc. Pavement. (2 1/2" A.C. Base Course & 1 1/2" A.C. Surface)
5. Excavated material to be stock piled at the location provided by the Health Department.



PARKING LOT EXPANSION  
 South of 10th Street and West of Minnesota Avenue  
 WICHITA - SEDGWICK COUNTY  
 DEPARTMENT OF COMMUNITY HEALTH  
 Date: Oct. 1971