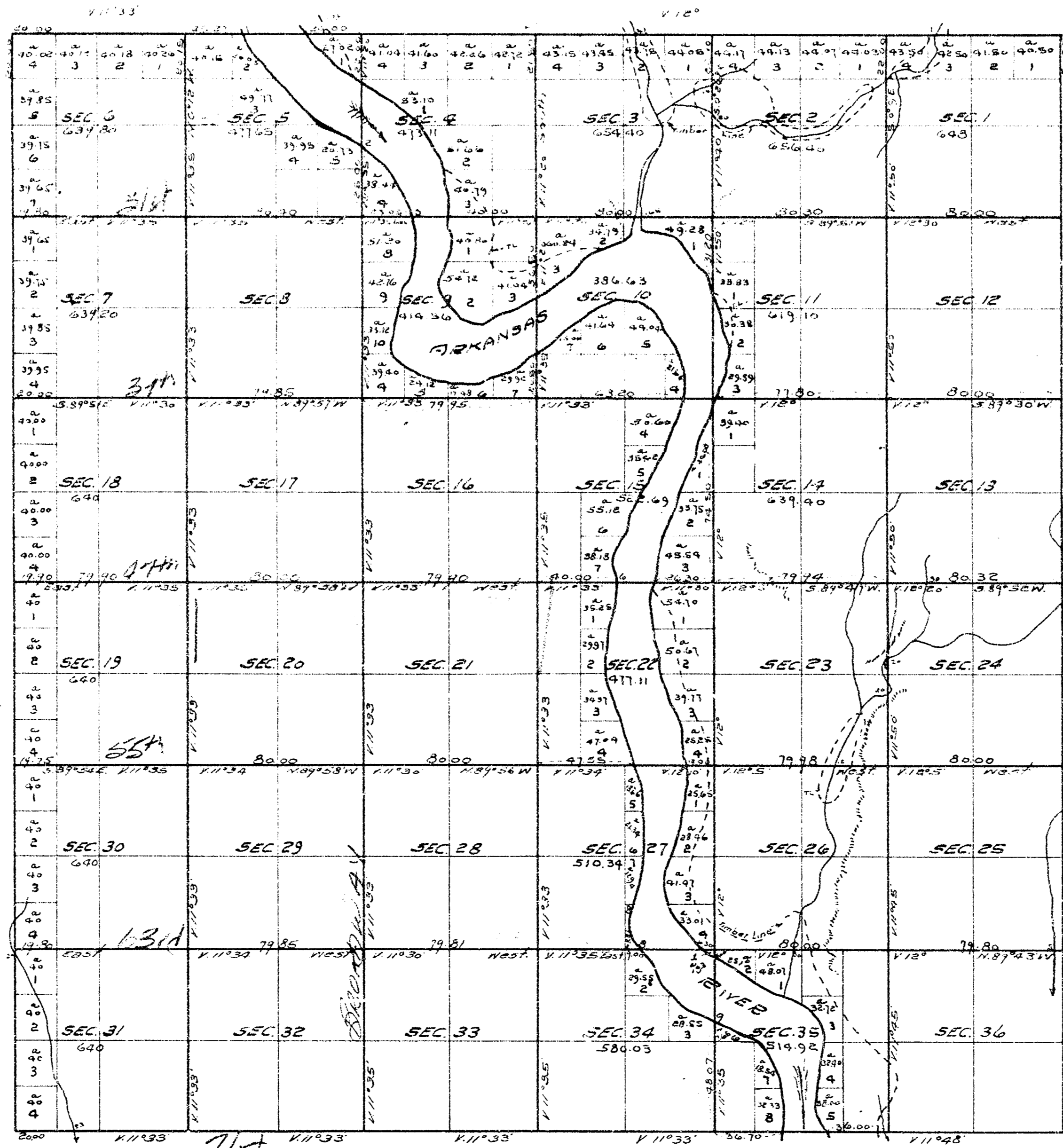


TOWNSHIP No 28 SOUTH OF RANGE No 1 EAST OF THE 6TH PRINCIPAL MERIDIAN KAN.



Scale 40 Chains to one inch
Variations of the needle East.

The above Map of Township No. 28 South of Range No. 1 East of the
6th Principal Meridian Kansas, is a true copy of the original plat.
Surveyor General's Office }
Lawrence Kan July, 20th 1878 } C. W. Babcock
Surveyor General
Copied Oct. 25th 1930.
By Eansom H. BROWN
County Surveyor