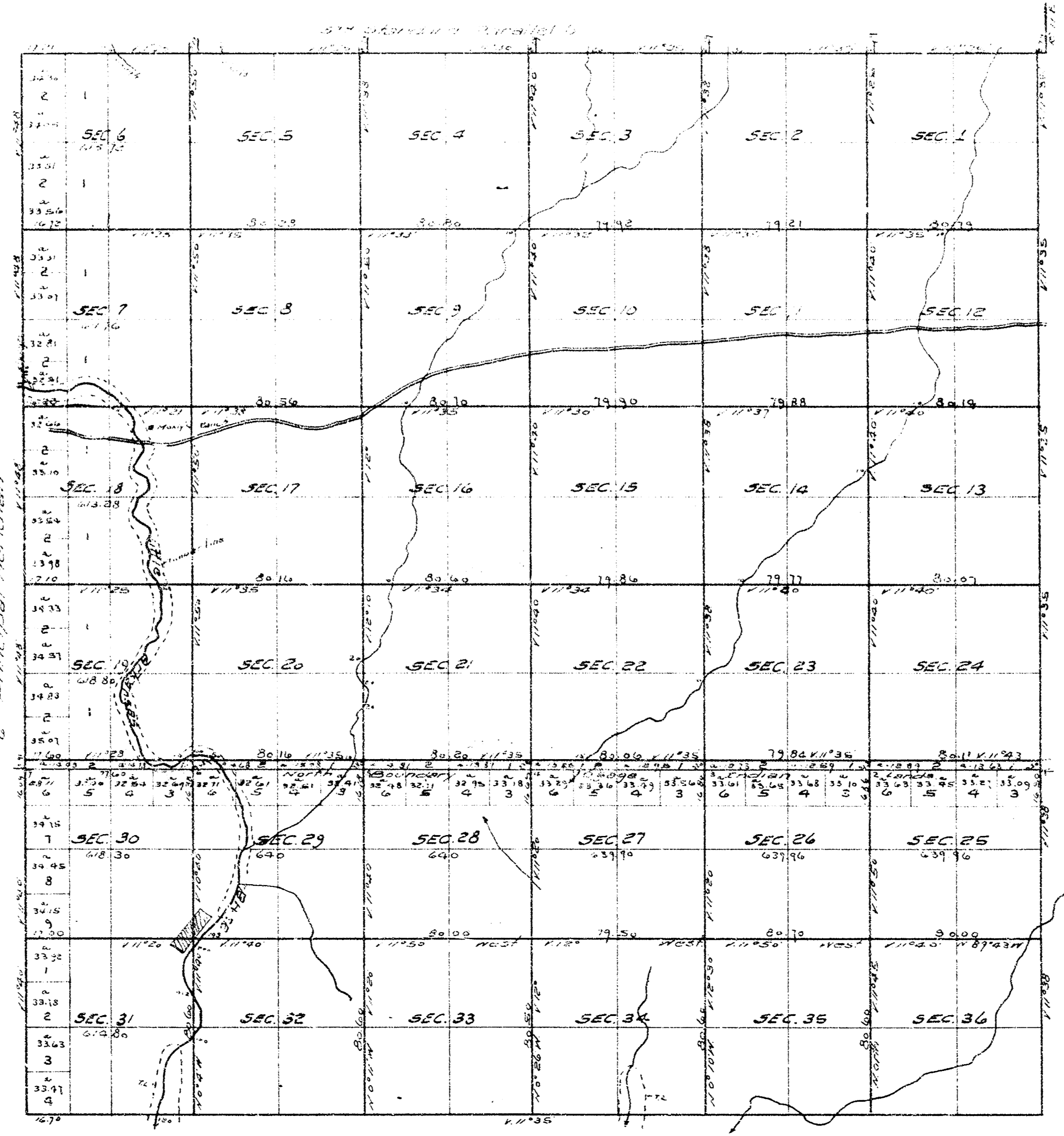


TOWNSHIP No 26 SOUTH OF RANGE No 1 EAST OF THE 6TH PRINCIPAL MERIDIAN, KAN.



Scale 40 chains to one Inch.
Variations of the needle East.

The above Map of Township No 26 South of Range No 1 East of the
6th Principal Meridian, Kansas, is a true copy of the original plat
Surveyor General's Office
Lawrence, Kan. July 24th 1874 C. H. BABCOCK
Surveyor General
Copied Oct. 29, 1930
By E. HANSON & BROWN,
County Surveyor