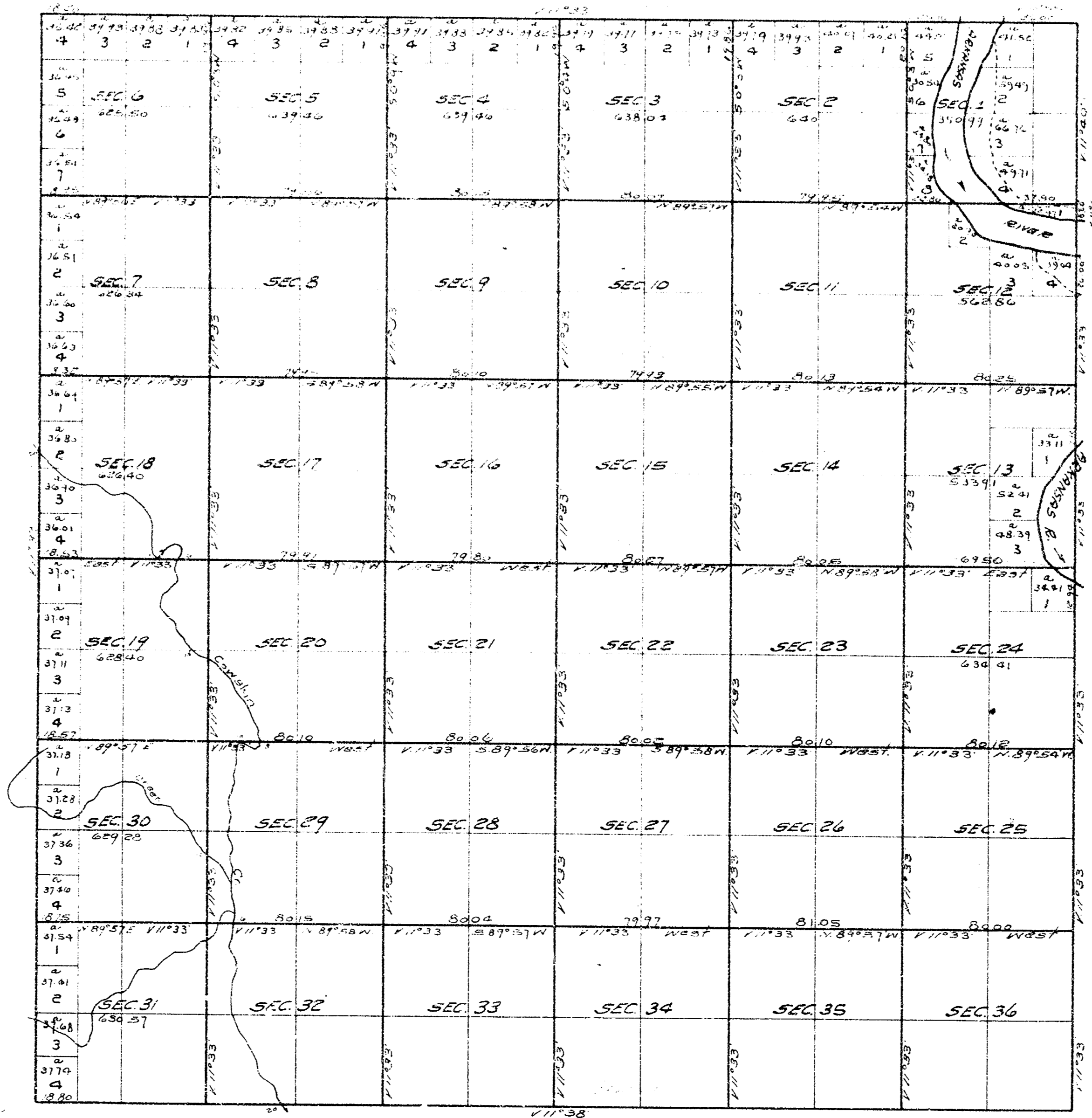


TOWNSHIP NO 27 SOUTH OF RANGE NO 1 WEST OF THE 6TH PRINCIPAL MERIDIAN, KAN.



Scale 40 Chains to one Inch.  
Variations of the meridian East.

The above Map of Township No 27 South of Range No 1 West of the  
6th Principal Meridian, Kansas, is a true copy of the original plat,  
Surveyor General's Office,  
Lawrence, Kan., July 24, 1872. } C. H. BABCOCK  
Surveyor General.

Copied Oct 4, 1930.  
By BARNETT H. BEAMAN  
County Surveyor.