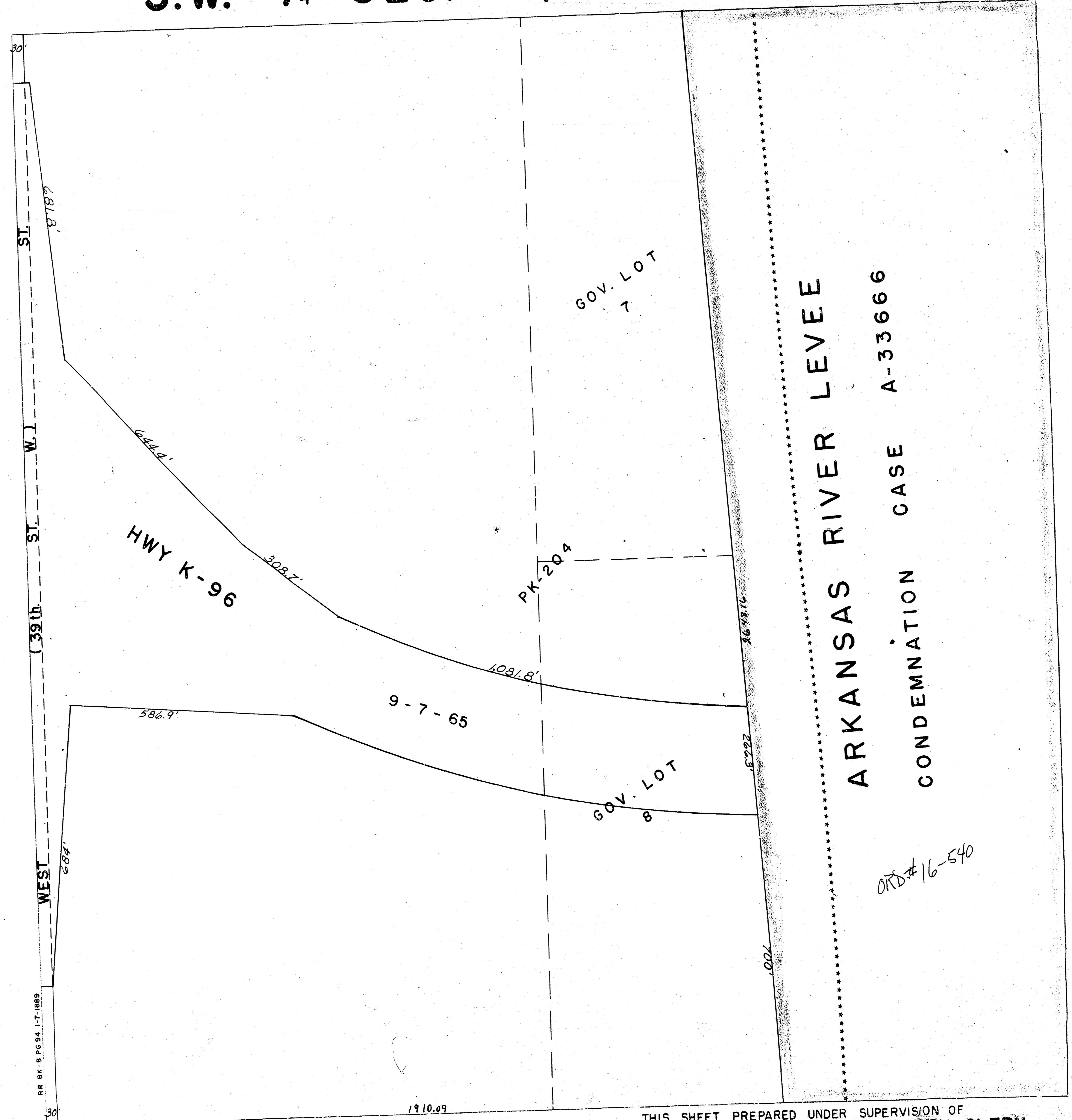


7-23

# S.W. 1/4 SEC. 25, TWP. 26S, R.1W

c 723-



ARKANSAS RIVER LEVEE  
 CONDEMNATION CASE A-33666

ORD # 16-540

THIS SHEET PREPARED UNDER SUPERVISION OF  
 MARIE WARDEN, SEDGWICK COUNTY CLERK

1910.09

NRR