

SCALE 1"=400'

ARKANSAS VALLEY INTERURBAN RAILWAY

ARKANSAS AVE.

AR ARKAS
ROSENTHAL
JACKSON
WAGO
FAIRVIEW
HURLINGTON
PARK
MARSHAL
LAWRENCE

25th ST
26th ST
27th ST
28th ST
29th ST
30th ST
31st ST
32nd ST
33rd ST
34th ST
35th ST
36th ST
37th ST
38th ST
39th ST
40th ST
41st ST
42nd ST
43rd ST
44th ST
45th ST
46th ST
47th ST
48th ST
49th ST
50th ST
51st ST
52nd ST
53rd ST
54th ST
55th ST
56th ST
57th ST
58th ST
59th ST
60th ST
61st ST
62nd ST
63rd ST
64th ST
65th ST
66th ST
67th ST
68th ST
69th ST
70th ST
71st ST
72nd ST
73rd ST
74th ST
75th ST
76th ST
77th ST
78th ST
79th ST
80th ST
81st ST
82nd ST
83rd ST
84th ST
85th ST
86th ST
87th ST
88th ST
89th ST
90th ST
91st ST
92nd ST
93rd ST
94th ST
95th ST
96th ST
97th ST
98th ST
99th ST
100th ST

29th ST

33rd ST

37th ST

LAWRENCE AVE.

A. T. & S. F. ROUNDHOUSE YARDS

MILLION BUSHEL ELEVATOR

JONES AUTOMOBILE CO.

ST. L. & S. F. SAN FRANCISCO R.R.

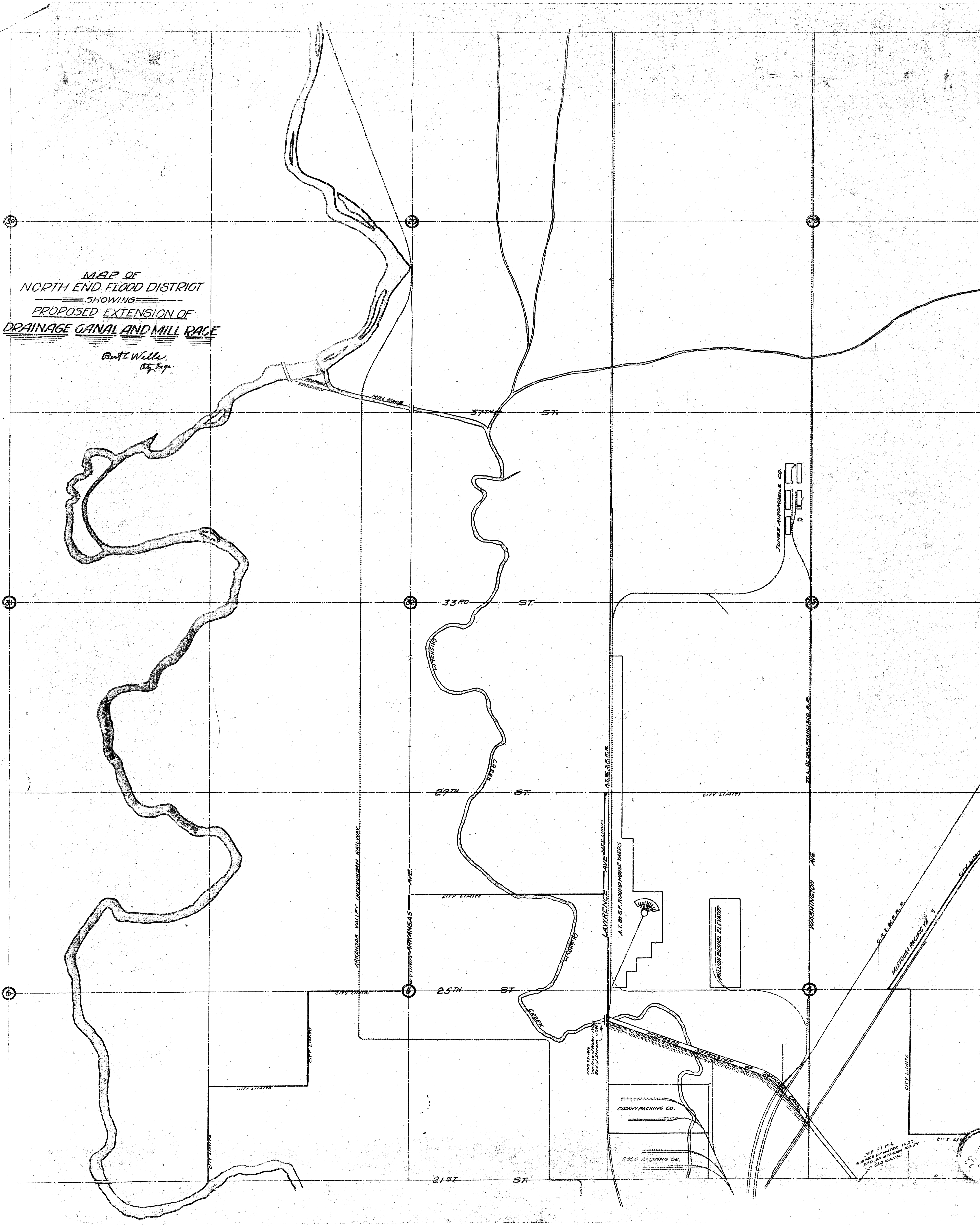
WASHINGTON AVE.

C. & L. R. R.

ST. LOUIS & MISSOURI PACIFIC R.R.

MAP OF
NORTH END FLOOD DISTRICT
SHOWING
PROPOSED EXTENSION OF
DRAINAGE CANAL AND MILL RACE

Ben T. Wells,
City Eng.



JUNE 21 1916
SURFACE OF WATER 11.57'
BED OF STREAM 100.00'
OLD CANAL