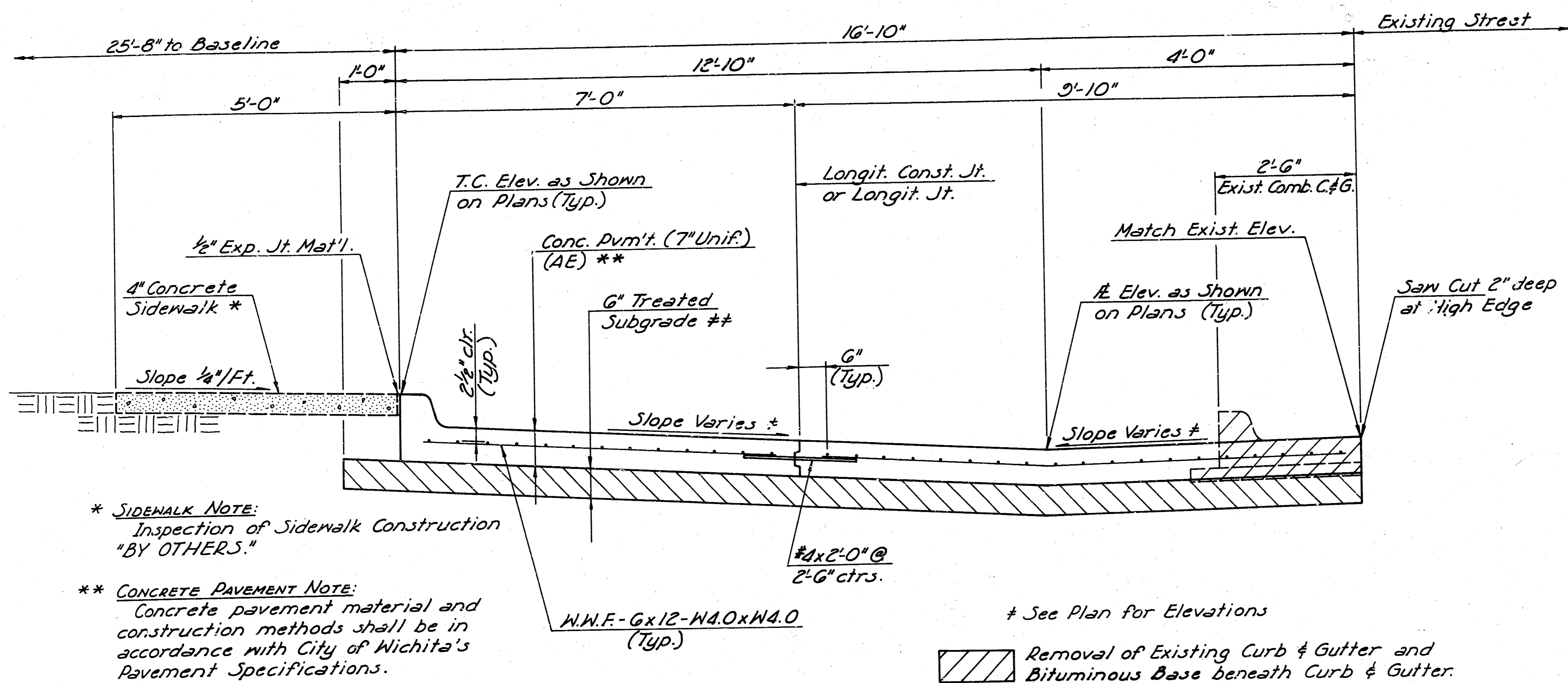
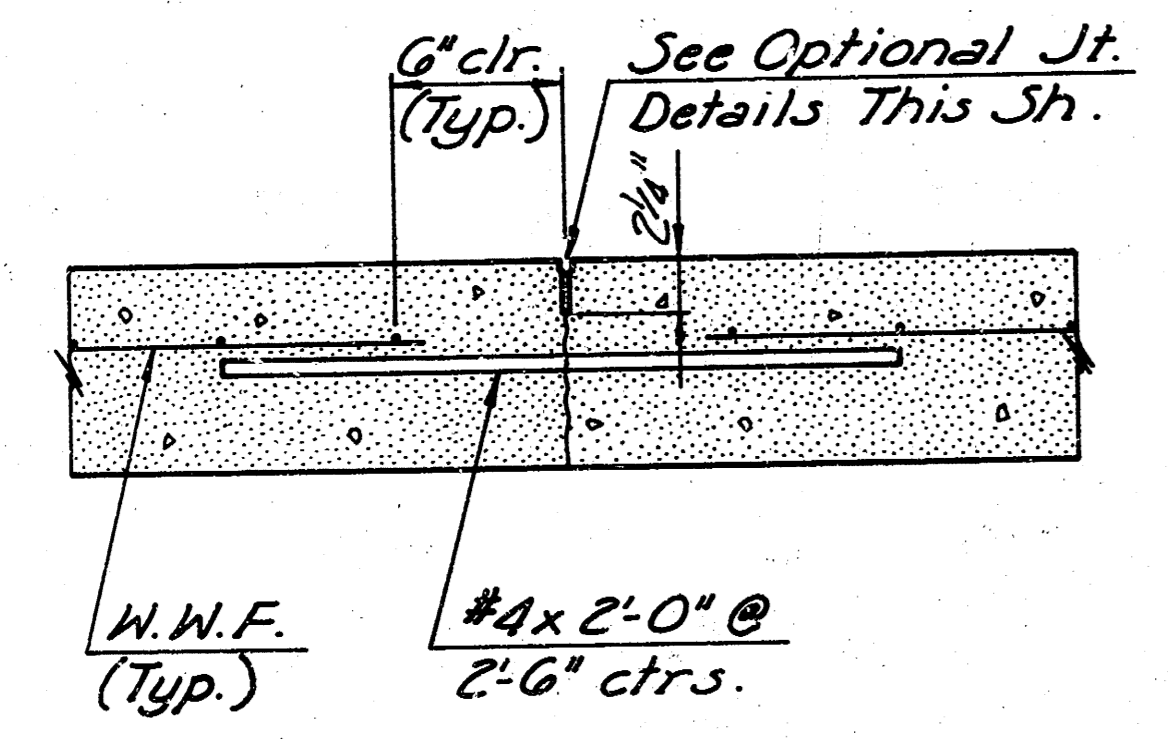


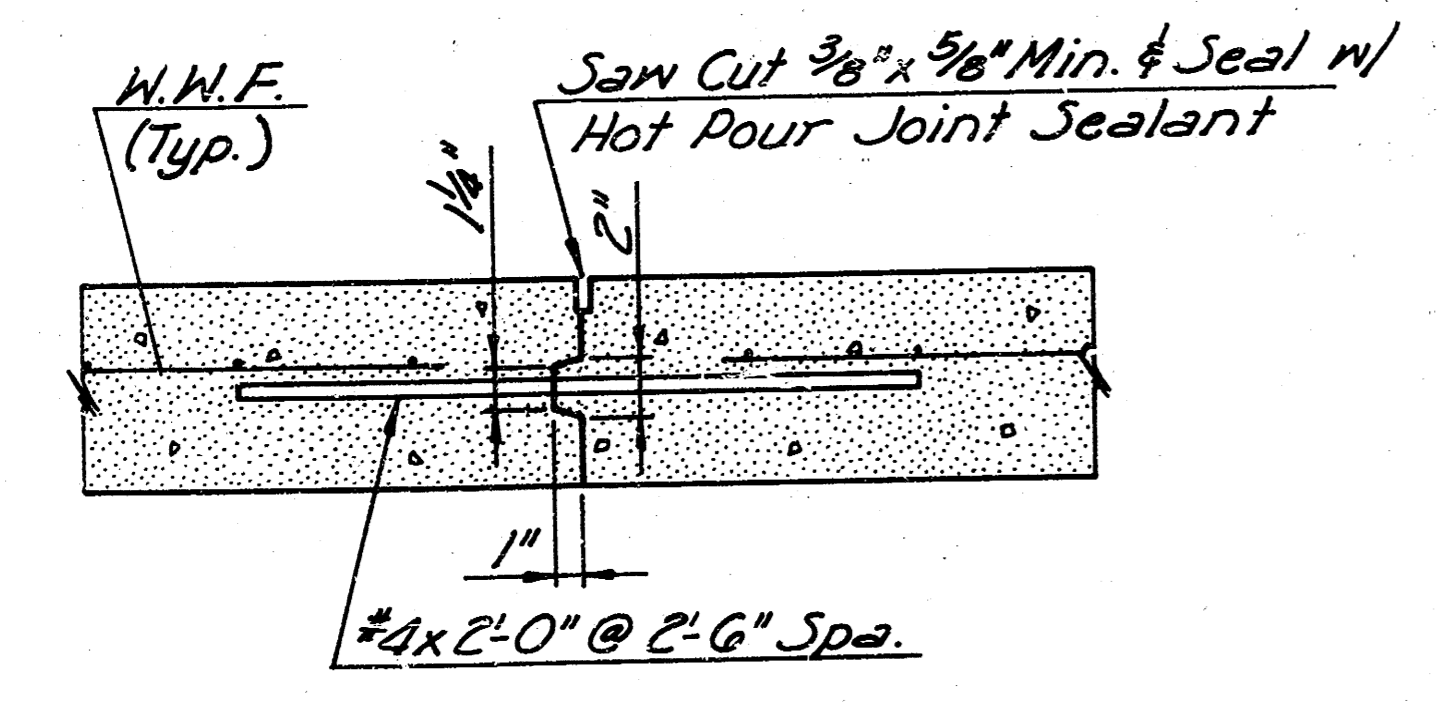
PROJECT NO.	FISCAL YEAR	SHEET NO.	TOTAL SHEETS
472-76-243-80000 -000-000-008	1983	1	3



- * **SIDEWALK NOTE:**
Inspection of Sidewalk Construction "BY OTHERS."
- ** **CONCRETE PAVEMENT NOTE:**
Concrete pavement material and construction methods shall be in accordance with City of Wichita's Pavement Specifications.
- ** **TREATED SUBGRADE NOTE:**
Treated Subgrade shall be constructed in accordance with City of Wichita's Street Paving Specifications and shall be either Pebble Quick Lime at the rate of 15 lbs./Sq. Yd. or Preheater Fines at the rate of 40 lbs./Sq. Yd.



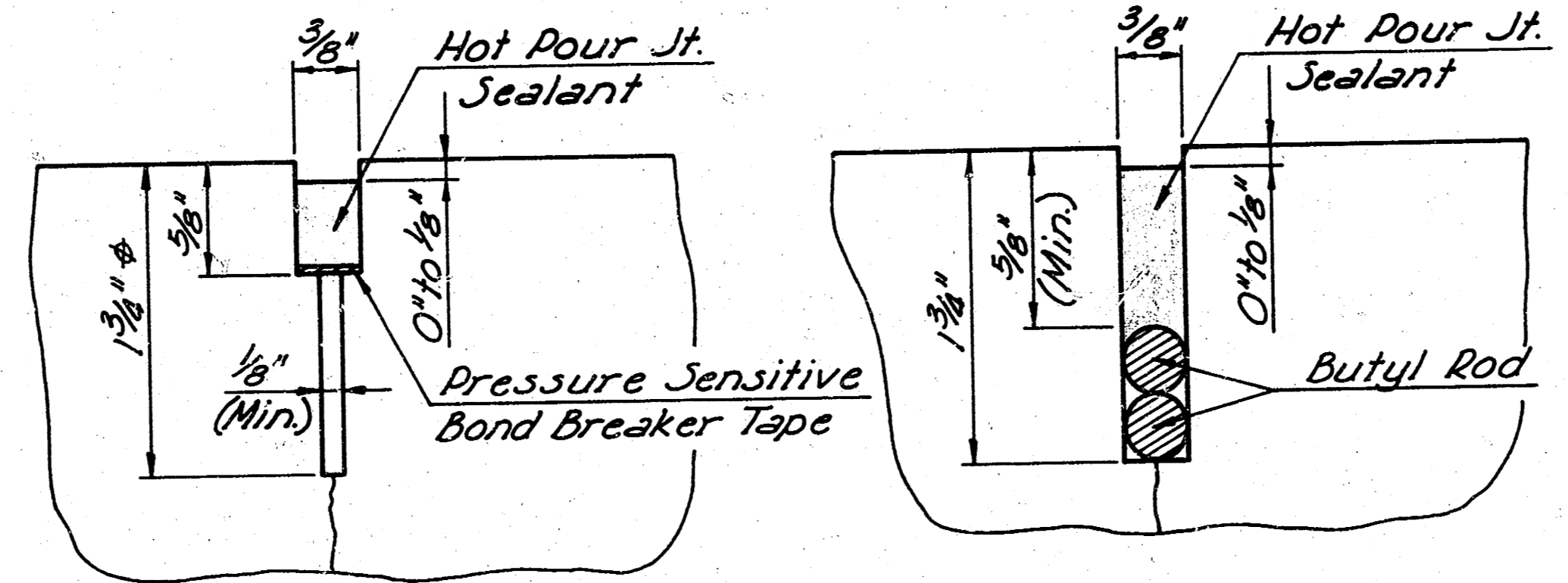
LONGITUDINAL JOINT DETAIL
(Transverse Section)



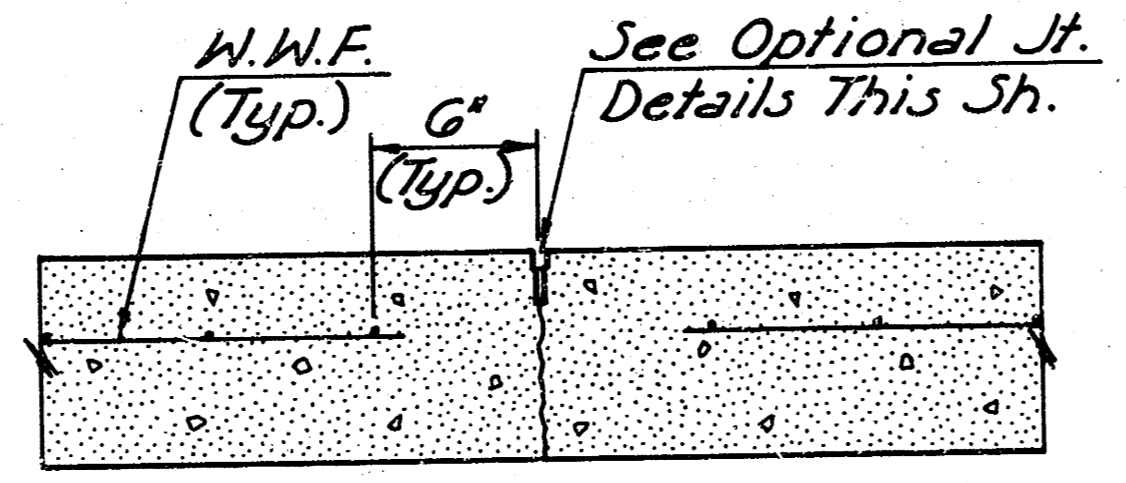
LONGITUDINAL CONSTRUCTION JOINT DETAIL
(Transverse Section)

TYPICAL SECTION

* 2 1/2" for Longitudinal Joint.



JOINT SAWING & FILLING DETAILS

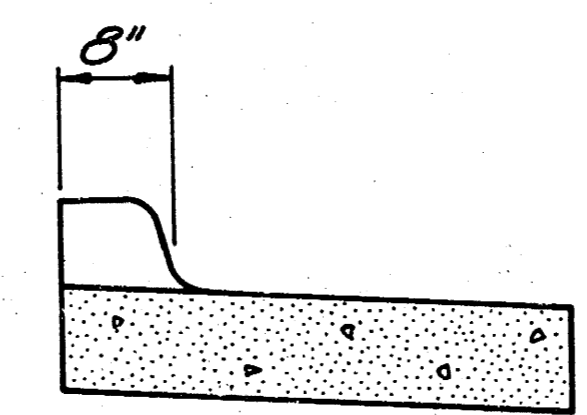


CONTRACTION JOINT

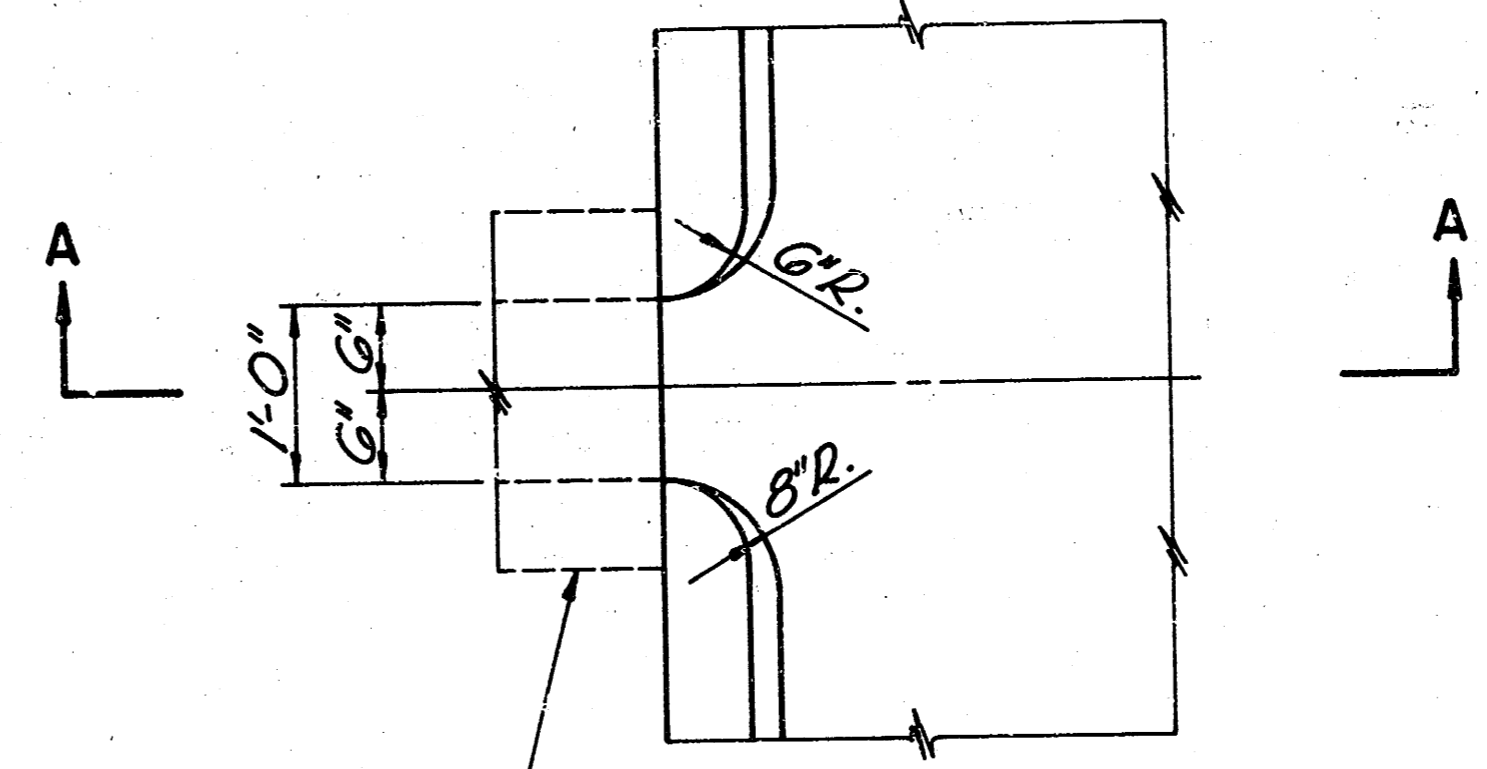
Transverse weakened plane joints shall be spaced at 20' centers or as otherwise shown on the plans.

MONOLITHIC EDGE CURB

Planes of Weakness are to be constructed over the Contraction Joints in the Concrete Pavement.



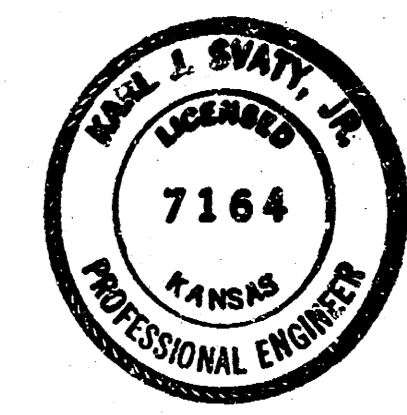
SECTION A-A



PLAN
Sidewalk Flume, See Architectural Details

FLUME OPENING AT CURB

7-21-83
APPROVED AS NOTED
By CITY ENGINEER OF WICHITA
Sanitary Sewers
Storm Sewers
Driveway Approaches



BUS PARKING LANES
NORTHEAST & SOUTHEAST
ELEMENTARY SCHOOLS
TYPICAL SECTION & PAVEMENT DETAILS
WICHITA, KANSAS
PROFESSIONAL ENGINEERING CONSULTANTS, P.A.
ENGINEERS
WICHITA, KANSAS

Designed by	K.J.S.	Checked by	K.J.S. & G.D.S.
Drawn by	M.L.L.	Date	March 1983

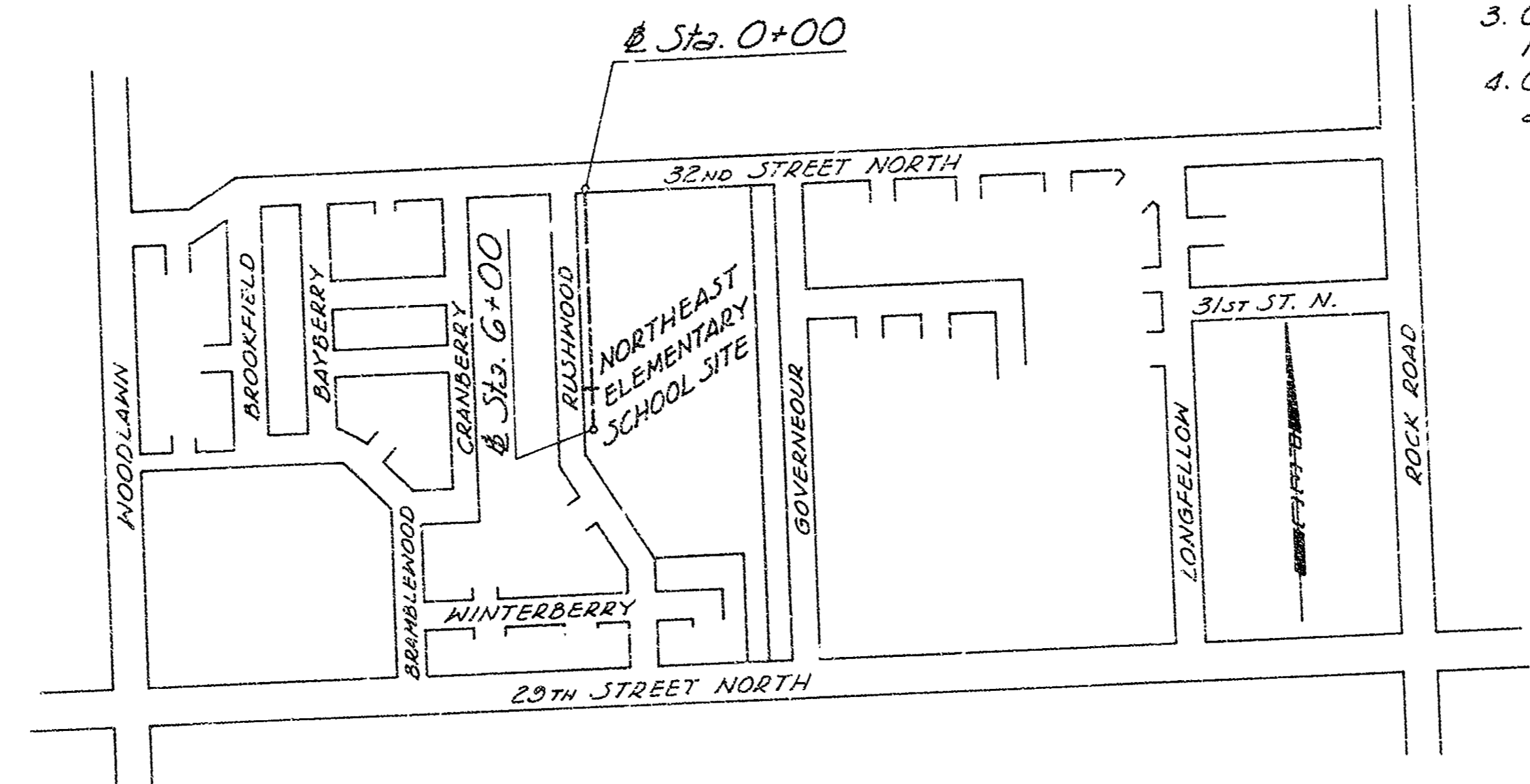
Job No. 83073

FILMED FROM THE BEST AVAILABLE COPY.....

PROJECT NO.	FISCAL YEAR	SHEET NO.	TOTAL SHEETS
472-76-245-80000 -000-000-008	1983	2	3

P.O.T. @ Sta. 0+00
 1. Chis. "1" at Bk. of S. Cb. 32nd at P.O.T.
 2. Center Top of Fire Hydrant 66.72' N.S.W.
 3. Nail and Shiner in Asphalt 40.00' N.
 4. Chis. "4" in Top of N. Cb. 32nd 25.19' N.

P.O.T. @ Sta. 6+00
 1. 1/2" Rebar at P.O.T. 78.27' N.
 2. Center Top of Fire Hydrant
 3. Chis. "4" in Top of E. Cb. Rushwood 64.95' N.W.
 4. Chis. "4" in Top of E. Cb. Rushwood at Drive Extended 3143 Rushwood 67.97' S.W.

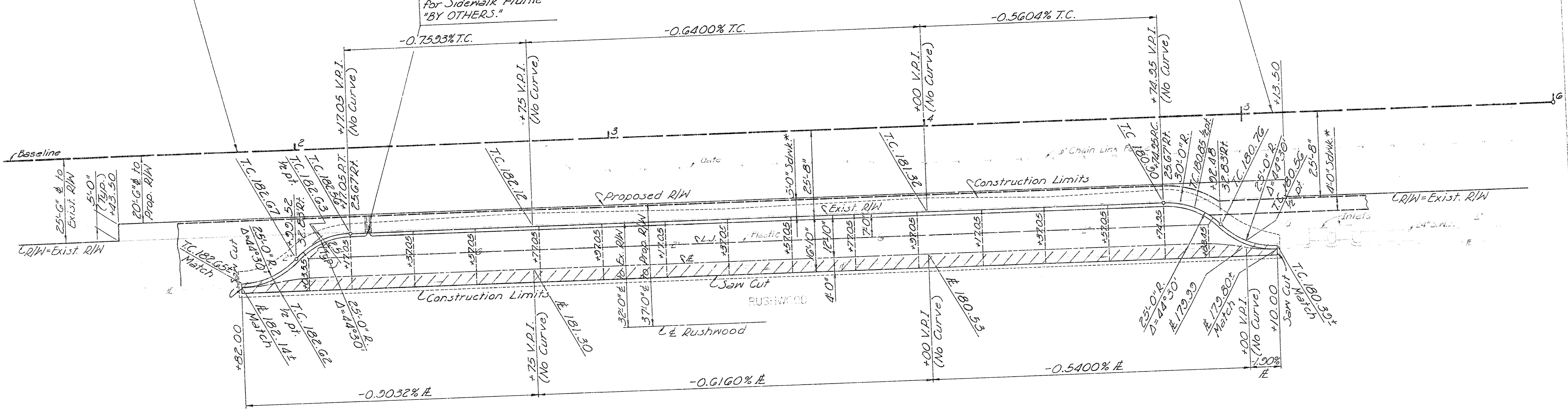


SCALE: 1" = 15'

Sta. 1+82 BEGIN Project

Sta. 2+23 Construct Curb Opening for Sidewalk Flume. See Architectural Details for Sidewalk Flume "BY OTHERS."

Sta. 5+10 END Project

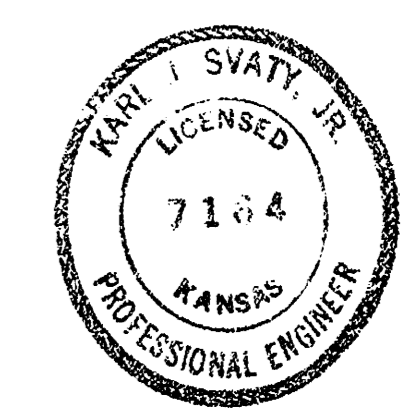


* Sidewalk Construction to be inspected "BY OTHERS."

Removal of Existing Curb & Gutter and Bituminous Base beneath Curb & Gutter.

UTILITY

Gas: Gas Service Company
 Ray Dohrer
 Wichita, Kansas
 (Contact prior to placing paving)



NORTHEAST ELEMENTARY SCHOOL
 SCHOOL BUS PARKING LANE
 WICHITA, KANSAS
 PROFESSIONAL ENGINEERING CONSULTANTS, P.A.
 ENGINEERS
 WICHITA, KANSAS

Designed by: R.J.S. Checked by: K.J.S. & G.D.S.
 Drawn by: M.L.L. Date: March 1983 Job No. 83073

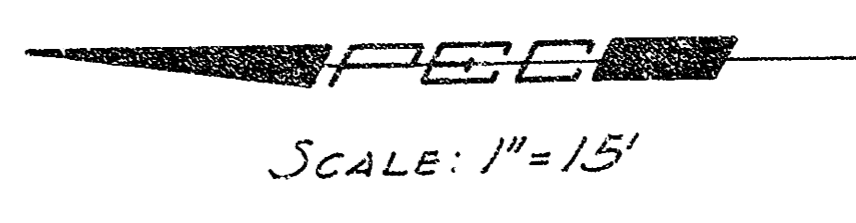
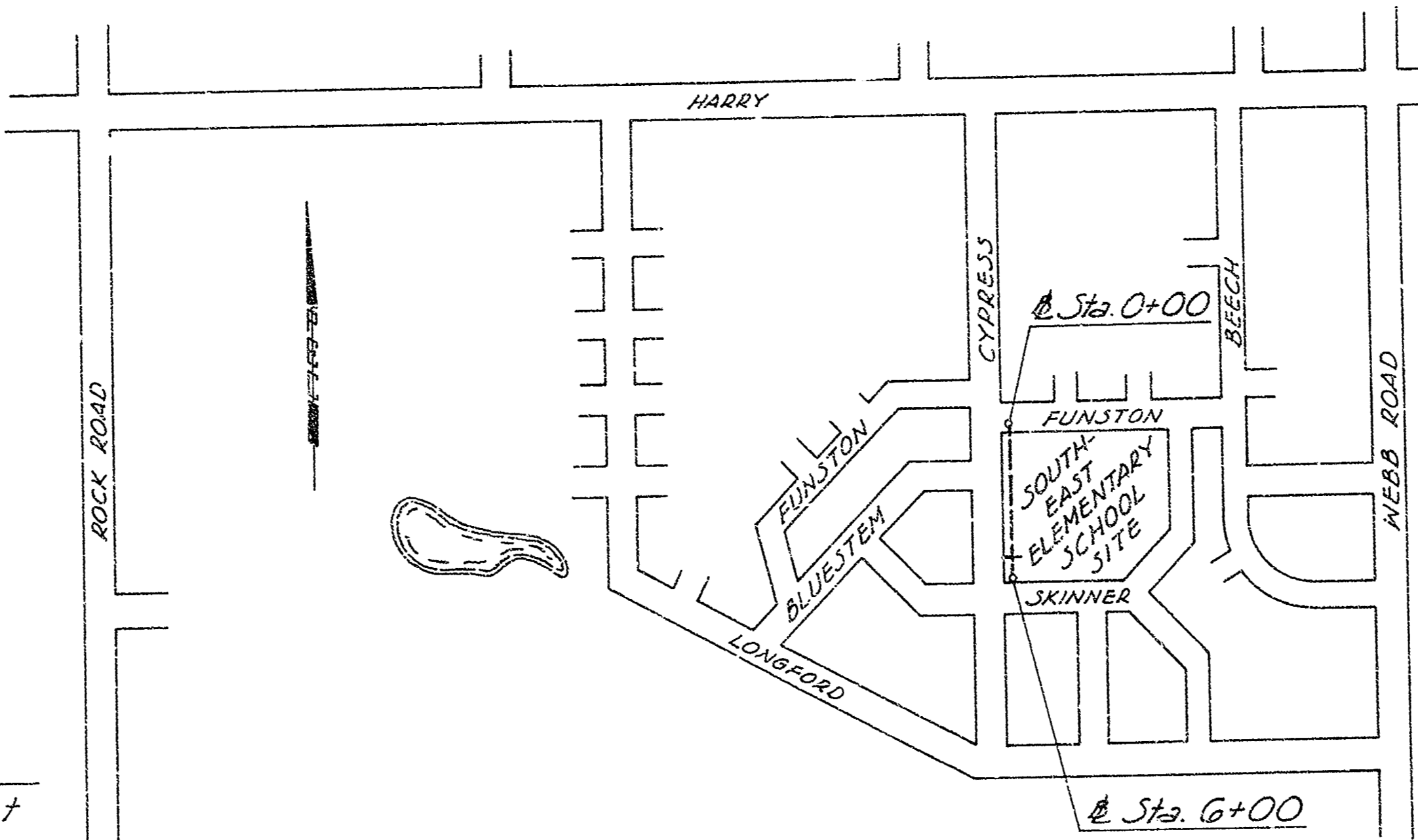
B.M. #1 - "M" in Mueller Top F.H.
 86' Lt. @ Sta. 0+16 Elev. 185.66

FILMED FROM THE BEST AVAILABLE COPY....

PROJECT NO.	FISCAL YEAR	SHEET NO.	TOTAL SHEETS
472-76-225-80000 -000-000-008	1983	3	3

P.O.T. @ Sta. 0+00
 1. Chis. "1" at Bk. of S. Cb. Funston at P.O.T.
 2. Nail and Shiner in Asphalt 40.00' N.
 3. Chis. "4" in S. Rim S.S. M.H. 18.64' S.W.
 4. Nail and Shiner in N. Face
 P.P. 0.6' above ground 37.89' S.W.

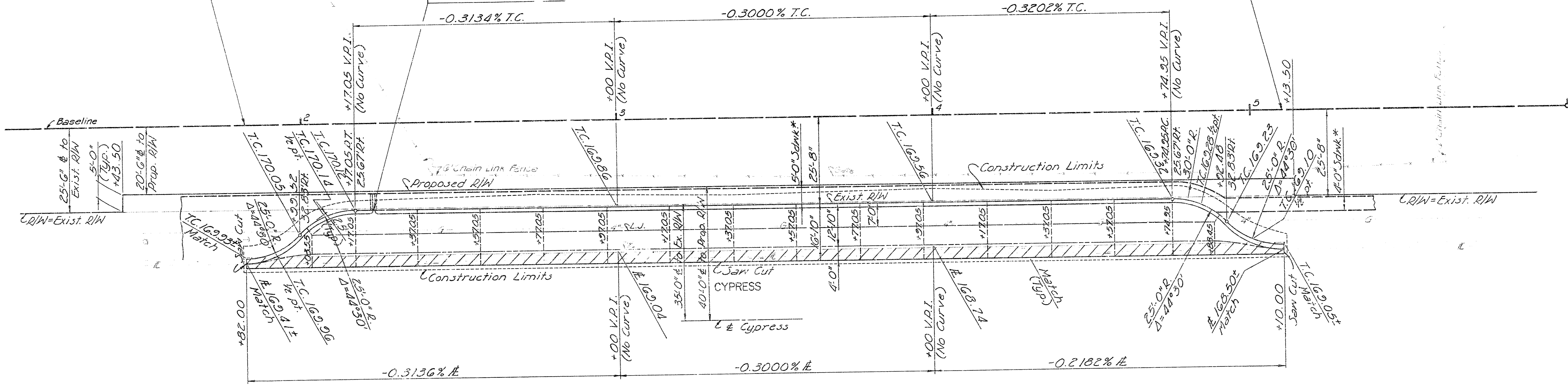
P.O.T. @ Sta. 6+00
 1. 1/2" Rebar at P.O.T.
 2. Chis. "1" at Bk. of Cb.
 Sta. 6+00 40' RT. 40.00' N.
 3. Chis. "4" at Bk. of Cb. 28.67' S.E.
 4. Chis. "4" at Bk. of Cb. 37.11' S.W.



Sta. 1+82 BEGIN Project

Sta. 2+23 Construct Curb Opening for Sidewalk Flume. See Architectural Details for Sidewalk Flume "BY OTHERS."

Sta. 5+10 END Project

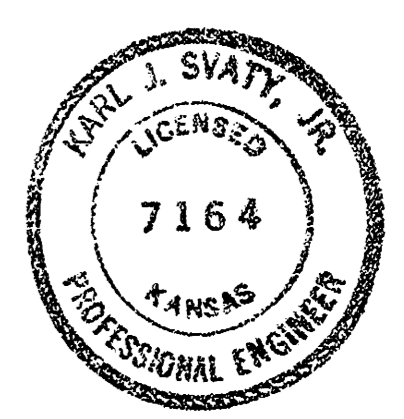


* Sidewalk Construction to be inspected "BY OTHERS."

Removal of Existing Curb & Gutter and Bituminous Base beneath Curb & Gutter.

UTILITY

Gas: Gas Service Company
 Rey Dohrer
 Wichita, Kansas
 (Contact prior to placing paving)



SOUTHEAST ELEMENTARY SCHOOL
SCHOOL BUS PARKING LANE
 WICHITA, KANSAS

PROFESSIONAL ENGINEERING CONSULTANTS, P.A.
 ENGINEERS
 WICHITA, KANSAS

Designed by: K.J.S.	Checked by: K.J.S. & G.D.S.
Drawn by: H.L.L.	Date: March 1983 Job No. 83073

B.M.#2 - R.R. Spk. in E. Face of P.P. N.W. Cor. Skinner & Cypress Elev. 103.46

FILMED FROM THE BEST AVAILABLE COPY....