

GENERAL NOTES

1. UNLESS SHOWN OR STATED OTHERWISE ON THESE DRAWINGS, MATERIALS AND CONSTRUCTION SHALL BE IN ACCORDANCE WITH CITY OF WICHITA CONCRETE PAVEMENT AND ASPHALTIC CONCRETE PAVEMENT SPECIFICATIONS.
2. THE CONTRACTOR SHALL BE RESPONSIBLE FOR PRESERVING PROPERTY IRONS. THE CONTRACTOR WILL BE REQUIRED TO RE-ESTABLISH ANY PROPERTY IRONS WHICH ARE DAMAGED OR DESTROYED BY HIS CONSTRUCTION OPERATIONS. SUCH IRONS SHALL BE RE-ESTABLISHED BY A LICENSED LAND SURVEYOR IN ACCORDANCE WITH STATE LAWS.
3. EXISTING UTILITIES AND THEIR LOCATIONS, AS SHOWN ON THE PLANS REPRESENT THE BEST INFORMATION OBTAINABLE FOR DESIGN. LOCATION INFORMATION HAS BEEN OBTAINED FROM THE VARIOUS UTILITY COMPANIES AND IS EITHER FROM COMPANY RECORD DRAWINGS OR COMPANY PROVIDED FIELD LOCATIONS. THE PLAN LOCATIONS SHOWN ARE NOT GUARANTEED. ADDITIONAL EXISTING UTILITIES MAY ALSO BE ENCOUNTERED.
4. CONTRACTOR WILL BE REQUIRED TO PROVIDE A MINIMUM ADVANCE NOTICE OF FORTY-EIGHT (48) HOURS TO UTILITY COMPANIES PRIOR TO STARTING ANY EXCAVATION AS FOLLOWS:

KANSAS ONE-CALL 1-800-344-7233
OR 687-2470 (LOCAL WICHITA)

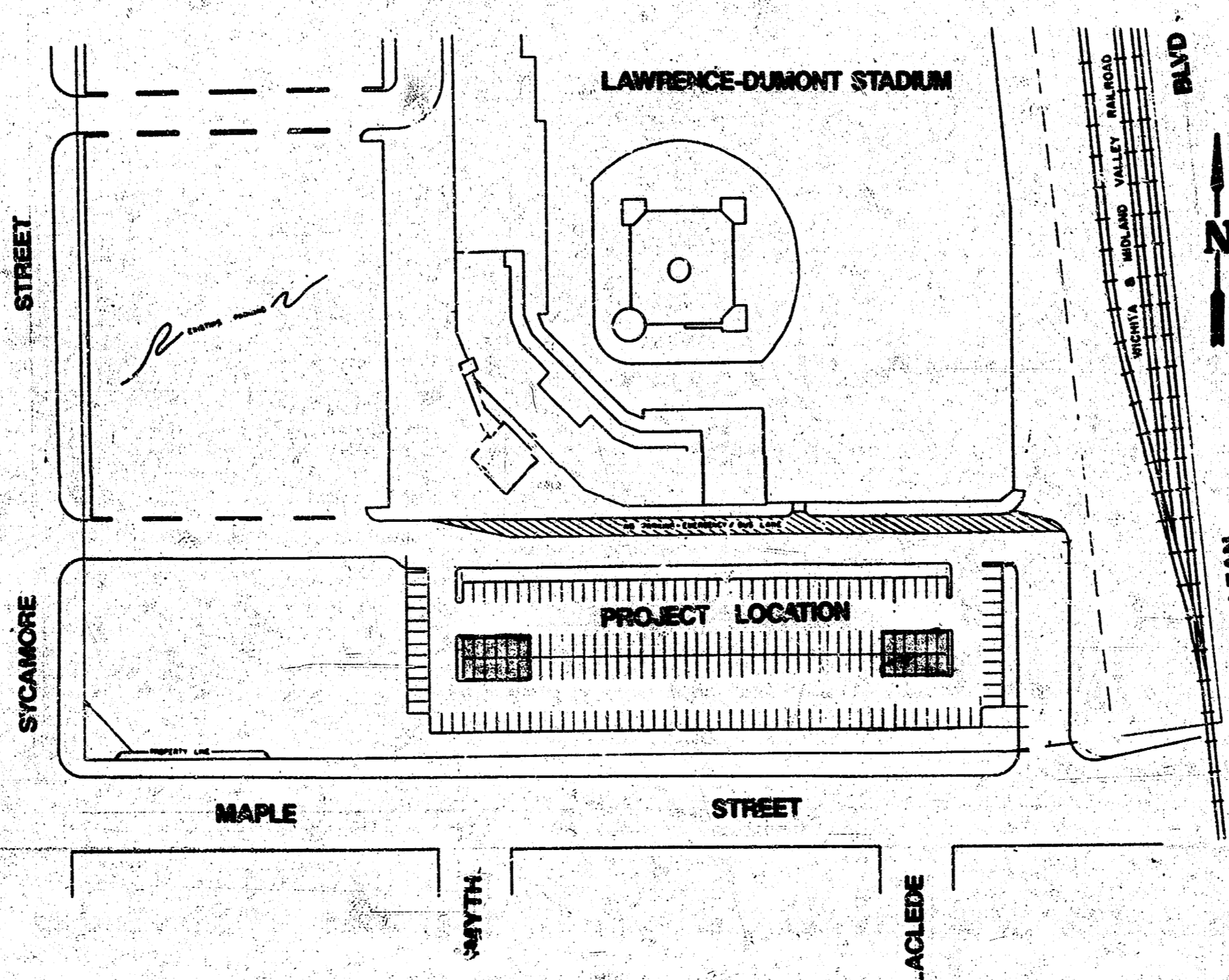
THE CONTRACTOR MUST NOTIFY THE FOLLOWING IN CASE OF AN EMERGENCY:

SOUTHWESTERN BELL TELEPHONE COMPANY	1-571-2115
CABLEVISION	282-4270 OR 283-2061
KPL GAS SERVICE COMPANY	283-7511
KANSAS GAS & ELECTRIC	284-1141
CITY OF WICHITA WATER DEPARTMENT	288-4908
CITY OF WICHITA SEWER MAINTENANCE	288-4908
ARKLA GAS COMPANY	942-8350 OR 283-8161

5. RUBBLE FROM THE REMOVAL OF MISCELLANEOUS STRUCTURES AND EXCESS EXCAVATION WHICH IS TO BE WASTED SHALL BE DISPOSED OF ON SITES TO BE PROVIDED BY THE CONTRACTOR. THESE SITES SHALL BE APPROVED BY THE ENGINEER AS TO SUITABILITY, APPEARANCE AND SITE LOCATION. LOCATIONS THAT, IN THE OPINION OF THE ENGINEER, WILL LEAVE AN UNSIGHTLY APPEARANCE WILL NOT BE APPROVED.
6. A SAW CUT OF AT LEAST ONE-HALF THE DEPTH OF EXISTING SURFACE COURSES OR ONE-FOURTH THE DEPTH OF THE EXISTING TOTAL PAVEMENT THICKNESS SHALL BE PROVIDED AT LOCATIONS WHERE PROPOSED CONSTRUCTION ADJUTS AN EXISTING SURFACE COURSE OR PAVEMENT FOR WHICH PARTIAL REMOVAL OF THAT SURFACE OR PAVEMENT IS REQUIRED. SAW JOINTS TO FACILITATE REMOVAL WITHIN THREE (3) FEET OF EXISTING JOINTS WILL NOT BE PERMITTED AND FOR SUCH INSTANCES THE LIMITS OF REMOVAL SHALL EXTEND TO THE EXISTING JOINT. SUCH SAW CUTS WILL NOT BE PAID FOR DIRECTLY AND THIS COST SHALL BE CONSIDERED AS SUBSIDIARY TO THE REMOVAL OF SURFACE OR PAVEMENT.
7. All disposal sites must be approved by the Kansas Department of Health and Environment. Material either stockpiled or disposed of in a flood plain must require a Kansas State Board of Agriculture permit. Any material dumped in waters of the United States or wetlands is subject to U.S. Corps of Engineers permitting regulations. Any material buried or stockpiled beyond approved construction limits would require additional archaeological investigations unless buried in a previously approved borrow location.
8. MARKING OF INDIVIDUAL PARKING STALLS WITH TRAFFIC PAINT IS TO BE COMPLETED BY CITY TRAFFIC ENGINEERING MAINTENANCE FORCES.
9. CONSTRUCTION PROPOSED REQUIRES A SWALE BE GRADED ALONG THE EAST SIDE OF THE STADIUM OUTFIELD WALL. SWALE TO BE GRADED BY CITY STREET MAINTENANCE FORCES.
10. SINCE RIGHT-OF-WAY HAS NOT BEEN CLEARED AT THE TIME OF PLAN PREPARATION THE EXACT EXTENT OF EARTHWORK NECESSARY TO FACILITATE PROPOSED CONSTRUCTION HAS NOT BEEN ASCERTAINED. IT IS PROJECTED THAT THE EXTENT OF SUCH EARTHWORK WILL NOT EXCEED EXCAVATIONS OR EMBANKMENTS IN EXCESS OF ONE FOOT. THE CITY STREET MAINTENANCE FORCES WILL DELIVER TO THE PROJECT SITE SUITABLE FILL MATERIAL IF SUCH BORROW MATERIAL IS NECESSARY.
11. GRASS AND LANDSCAPE PLANTINGS SHALL BE COMPLETED BY CITY PARK MAINTENANCE FORCES.

PUBLIC PARKING LOT AT 400 W. MAPLE

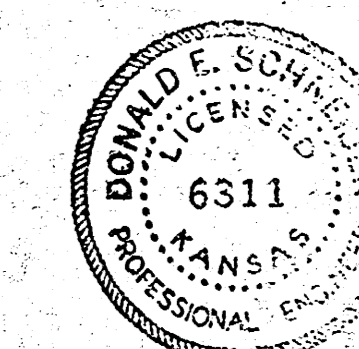
INDEX NO. 790147



CITY OF WICHITA, KANSAS
M. E. LINDEBAK CITY ENGINEER

INDEX TO SHEETS

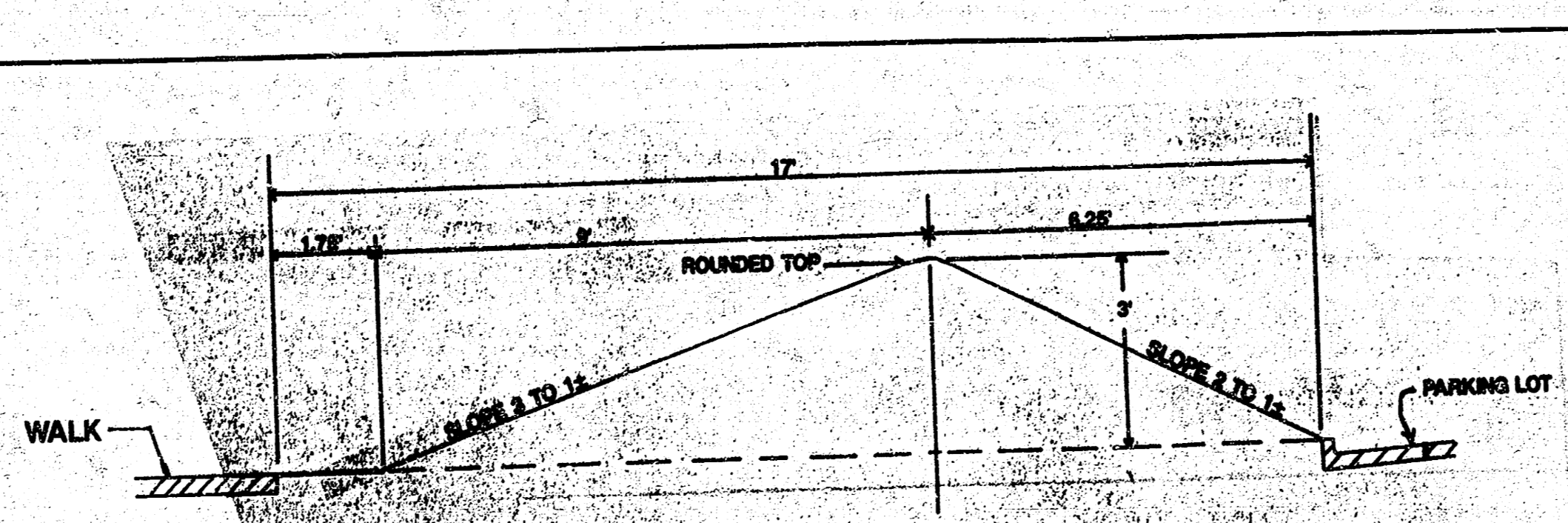
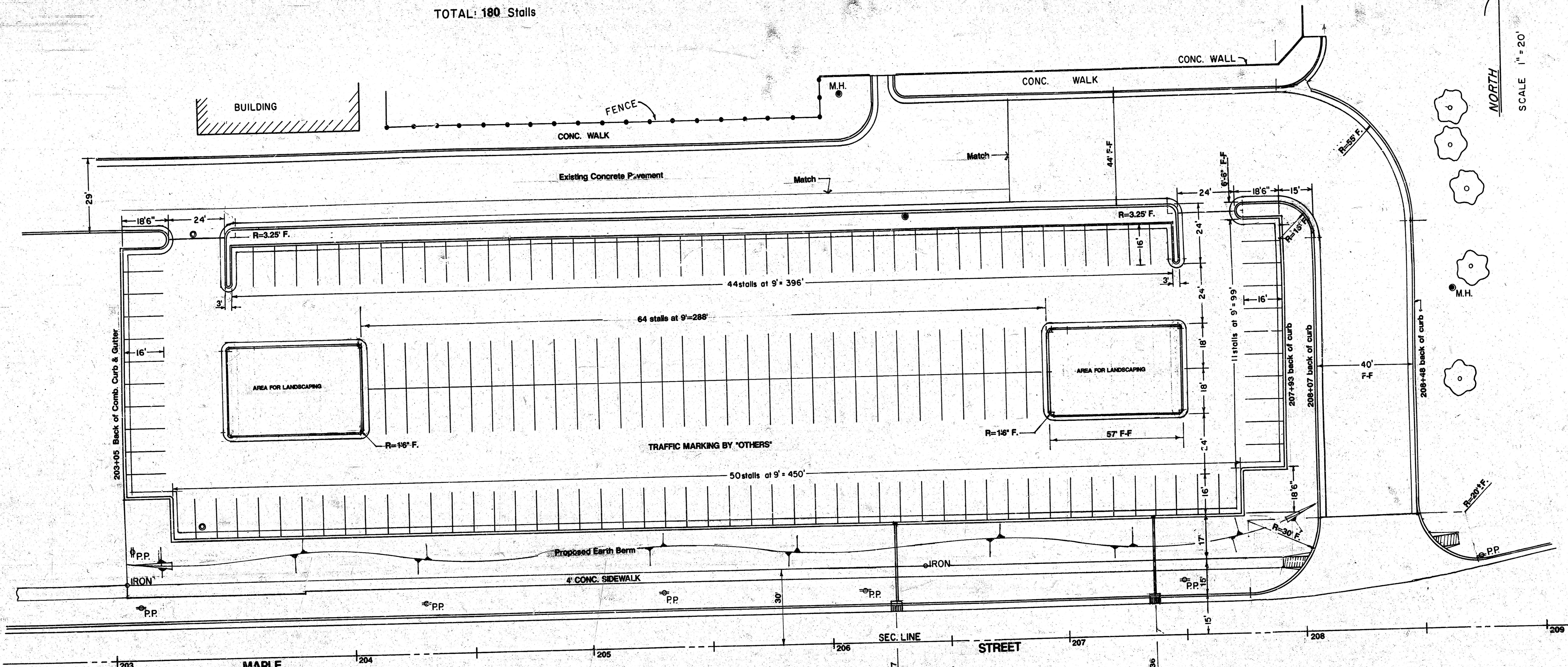
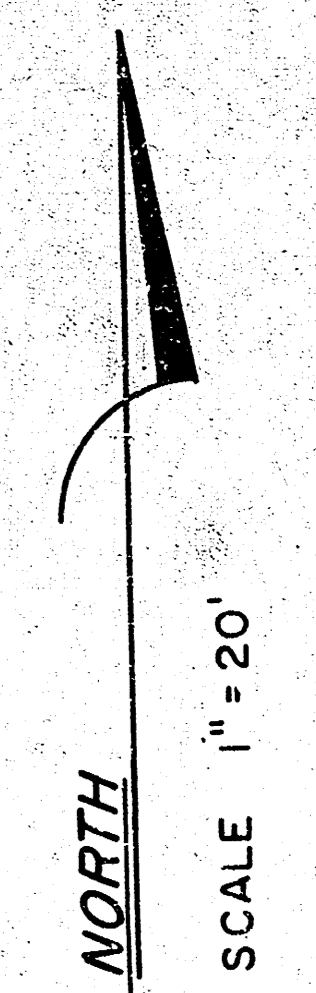
SHEET NO.	DESCRIPTION
1	TITLE SHEET
2	CONSTRUCTION LAYOUT
3	PAVING PLAN
4	TYPICAL SECTION AND MISC. DETAILS
5	DETAIL TYPE II CURB INLET
6	DETAIL MANHOLE ADJUSTMENT
7	LANDSCAPING PLAN FOR (INFORMATION ONLY)



SCALE:	APPROVED BY:	DRAWN BY:
DATE:		
		DRAWING NUMBER

LAWRENCE DUMONT STADIUM

TOTAL: 180 Stalls



TYPICAL SECTION OF BERM
EXCAVATED MATERIAL SUITABLE TO SUPPORT NORMAL VEGETATION GROWTH IS TO BE USED FOR BACKFILL IN PARKING AREAS AND THE CONSTRUCTION OF EARTH BERM.

NOTE: CONTRACTOR TO CONSTRUCT EARTH BERM AS INDICATED. BERM SHALL BE SERPENTINED AS INDICATED BY ALTERNATING SLOPES FROM 2:1 TO 3:1 AS SHOWN IN TYPICAL SECTION. BERM TO BE CONSTRUCTED OF EARTH SUITABLE TO SUPPORT VEGETATION.

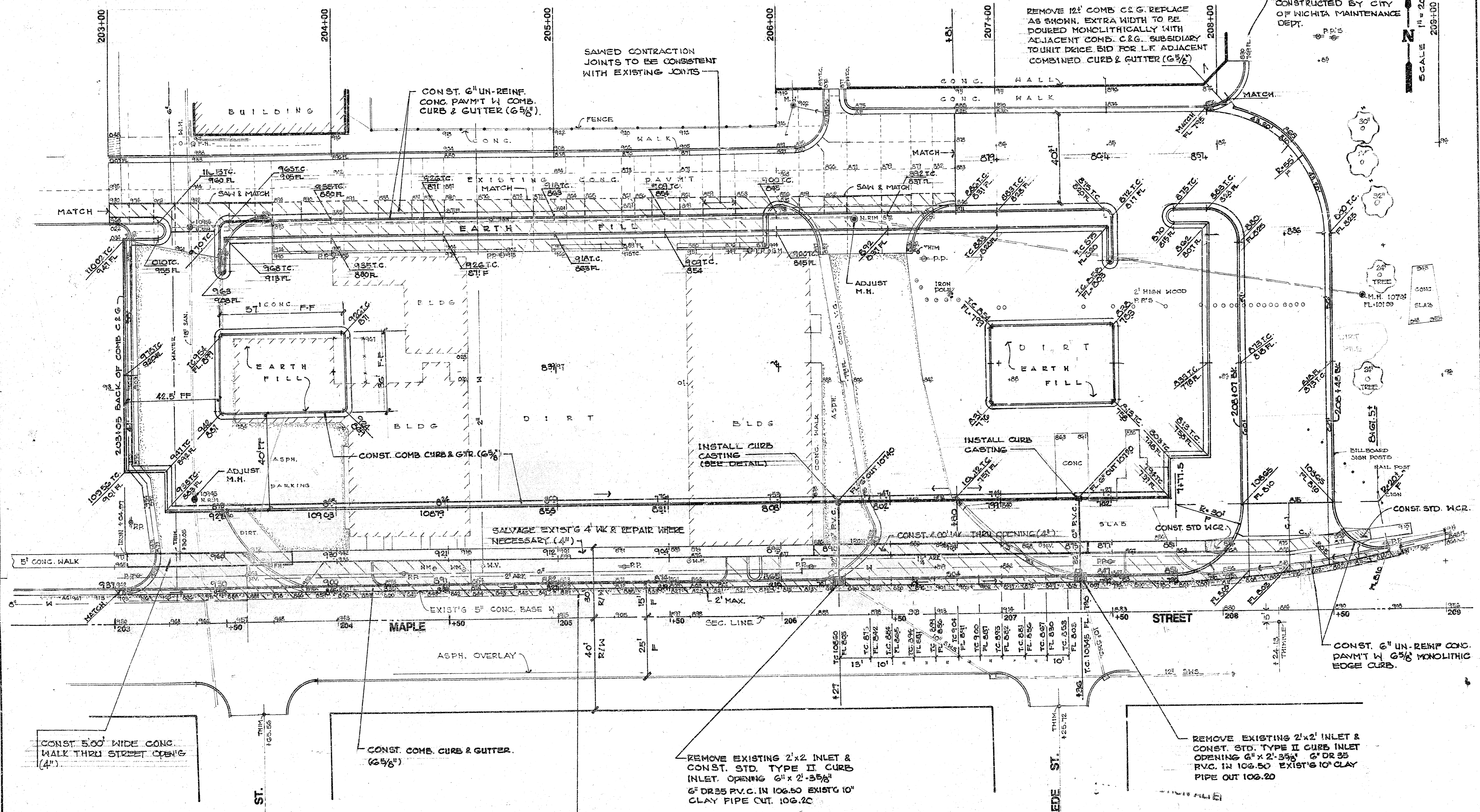
PROJECT DESCRIPTION
PUBLIC PARKING LOT AT 400 W. MAPLE
INDEX NUMBER
79014-7

IRON IN TRIMBLE - INTERSECTION MAPLE
& SCYAMORE STA. 200+00

LAWRENCE-DUMONT STADIUM

B.M. 112.12 CITY OF WICKITA DISC. S.W. COR BRIDGE
ARKANSAS RIVER AND MAPLE ST.
B.M. 103.5A "O" TOP CURB N.N.W. CURB RETURN, AT THE
INTERSECTION OF LACLEDE ST AND MAPLE ST.
B.M. 109.43 "O" TOP CURB N.N.W. CURB RETURN AT THE
INTERSECTION OF SMYTH ST. AND MAPLE ST.

SCALE 1" = 20'
2009-100



CONST. 5'00" WIDE CONC.
WALK THRU STREET OPENING
(4")

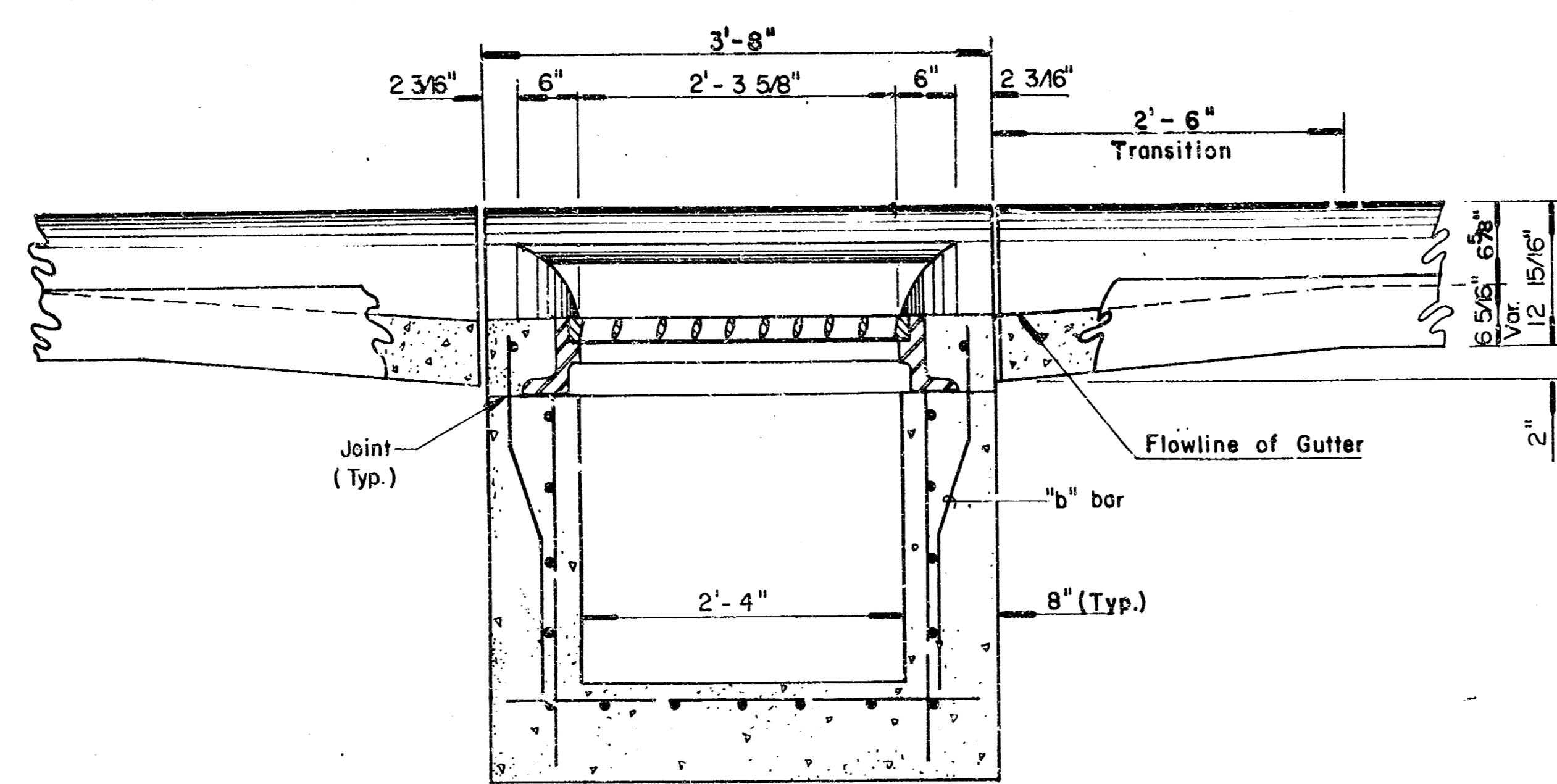
CONST. COMB. CURB & GUTTER.
(6 5/8")

REMOVE EXISTING 2'x2' INLET &
CONST. STD. TYPE II CURB
INLET. OPENING 6" x 2'-3 5/8"
6" DR35 P.V.C. IN 106.50 EXISTG 10"
CLAY PIPE OUT 106.20

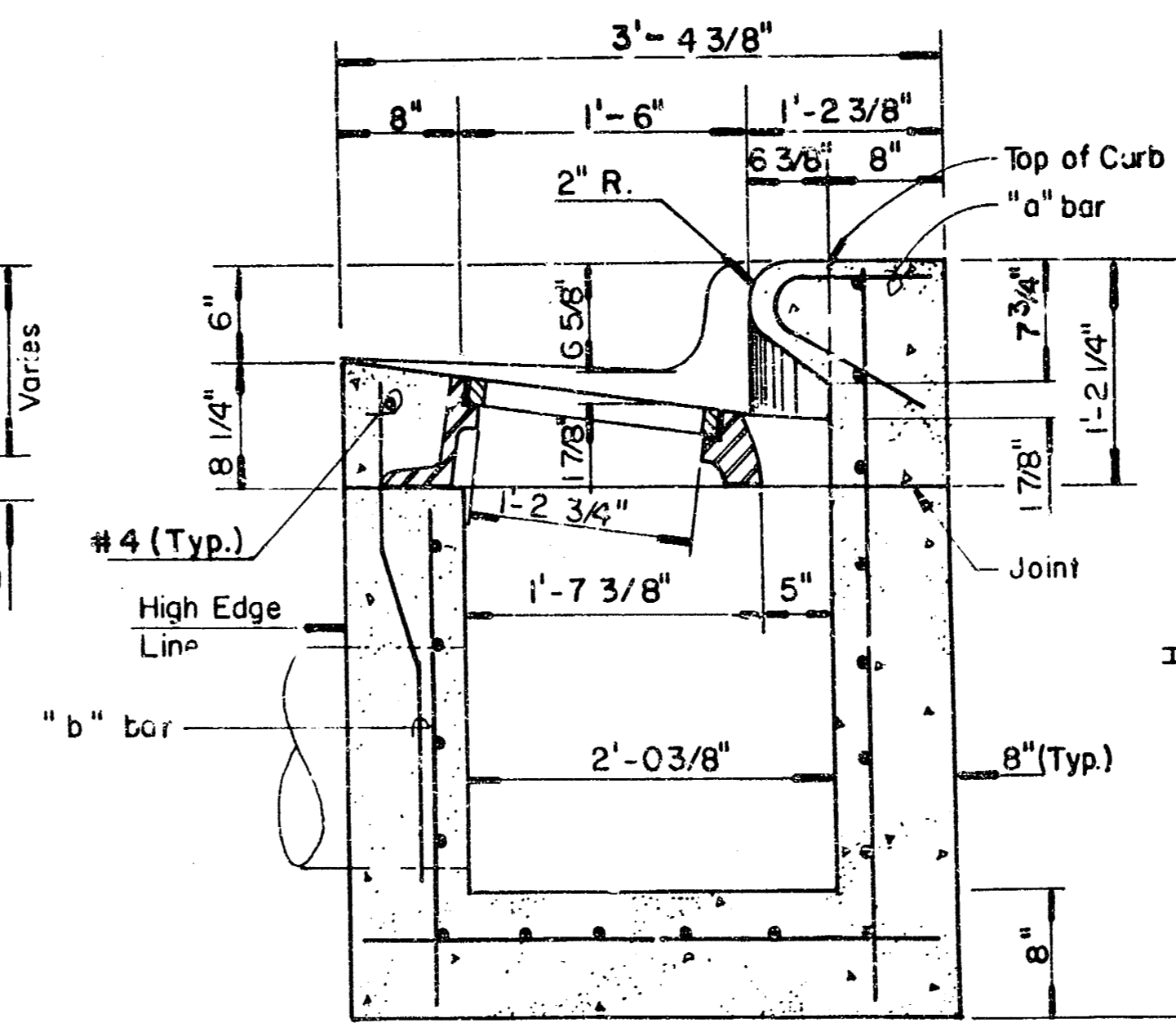
SAW - REMOVE AND REPLACE A.C. SURFACE
TO MATCH NEW CONSTRUCTION. 2' MAX. REMOVAL.

REMOVE EXISTING 2'x2' INLET &
CONST. STD. TYPE II CURB INLET
OPENING 6" x 2'-3 5/8" 6" DR 35
P.V.C. IN 106.50 EXISTG 10" CLAY
PIPE OUT 106.20

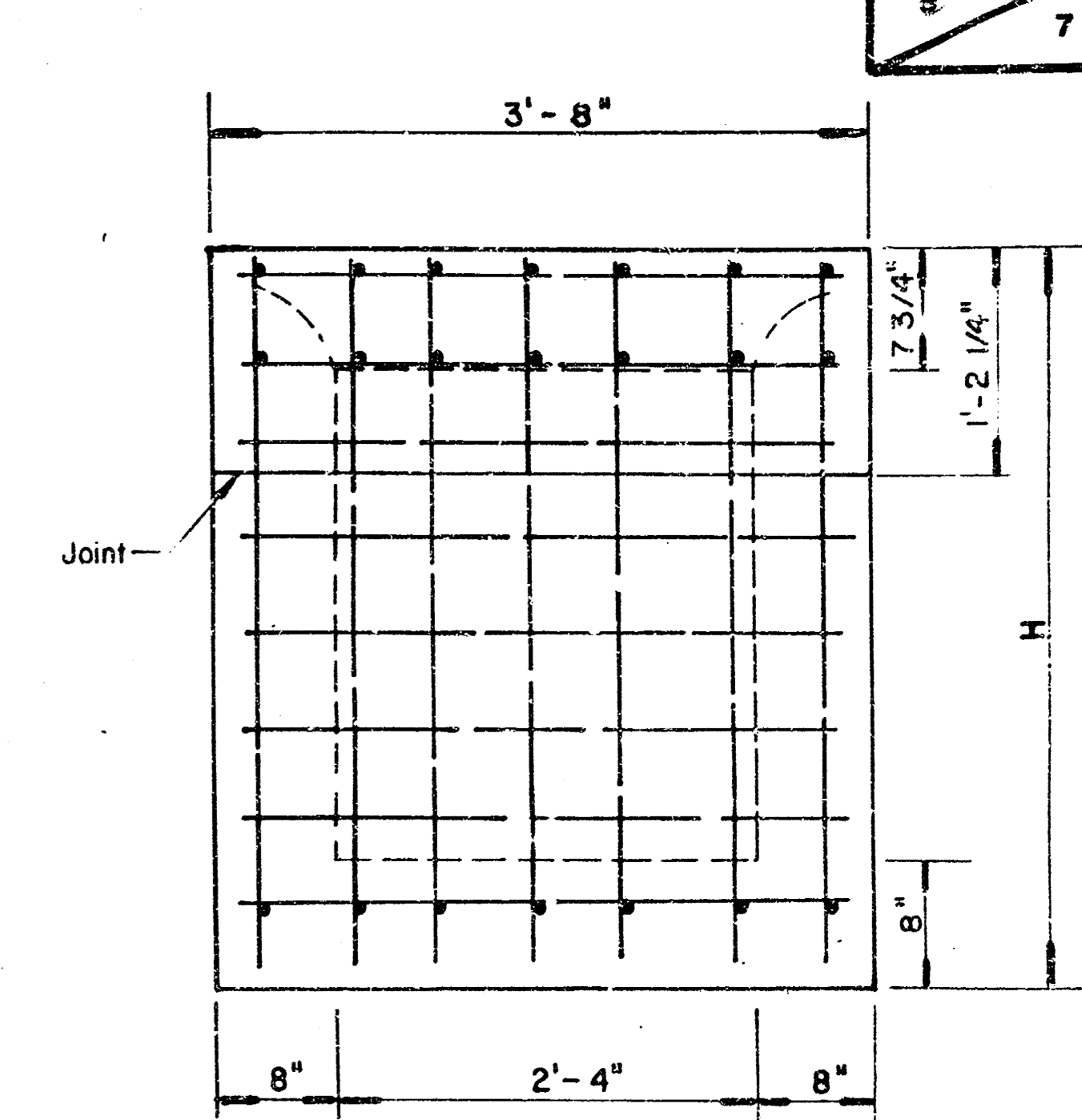
PROJECT DESCRIPTION
PUBLIC PARKING LOT AT 400 W. MAPLE
PROJECT NUMBER
790147



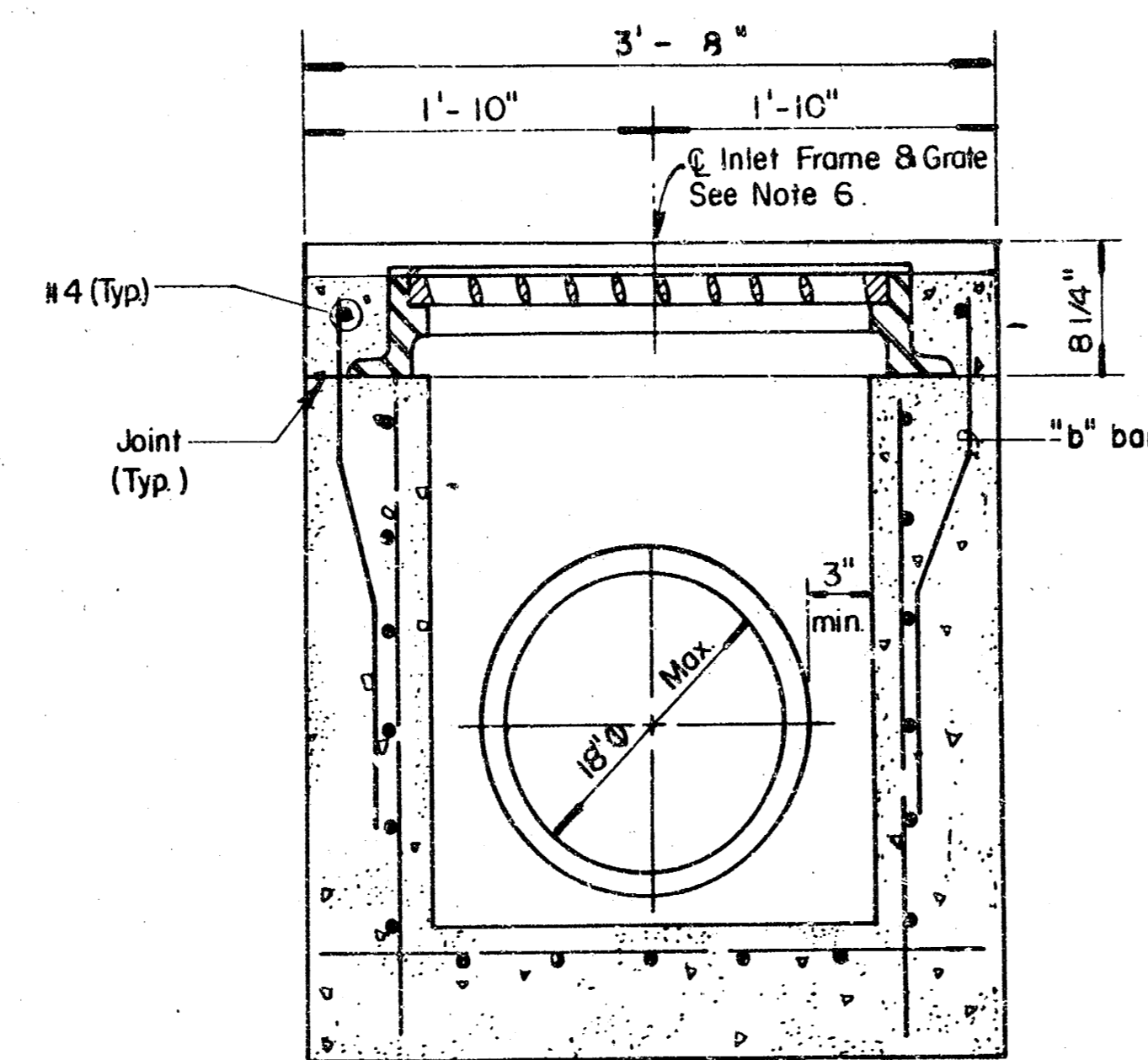
SECTION C-C



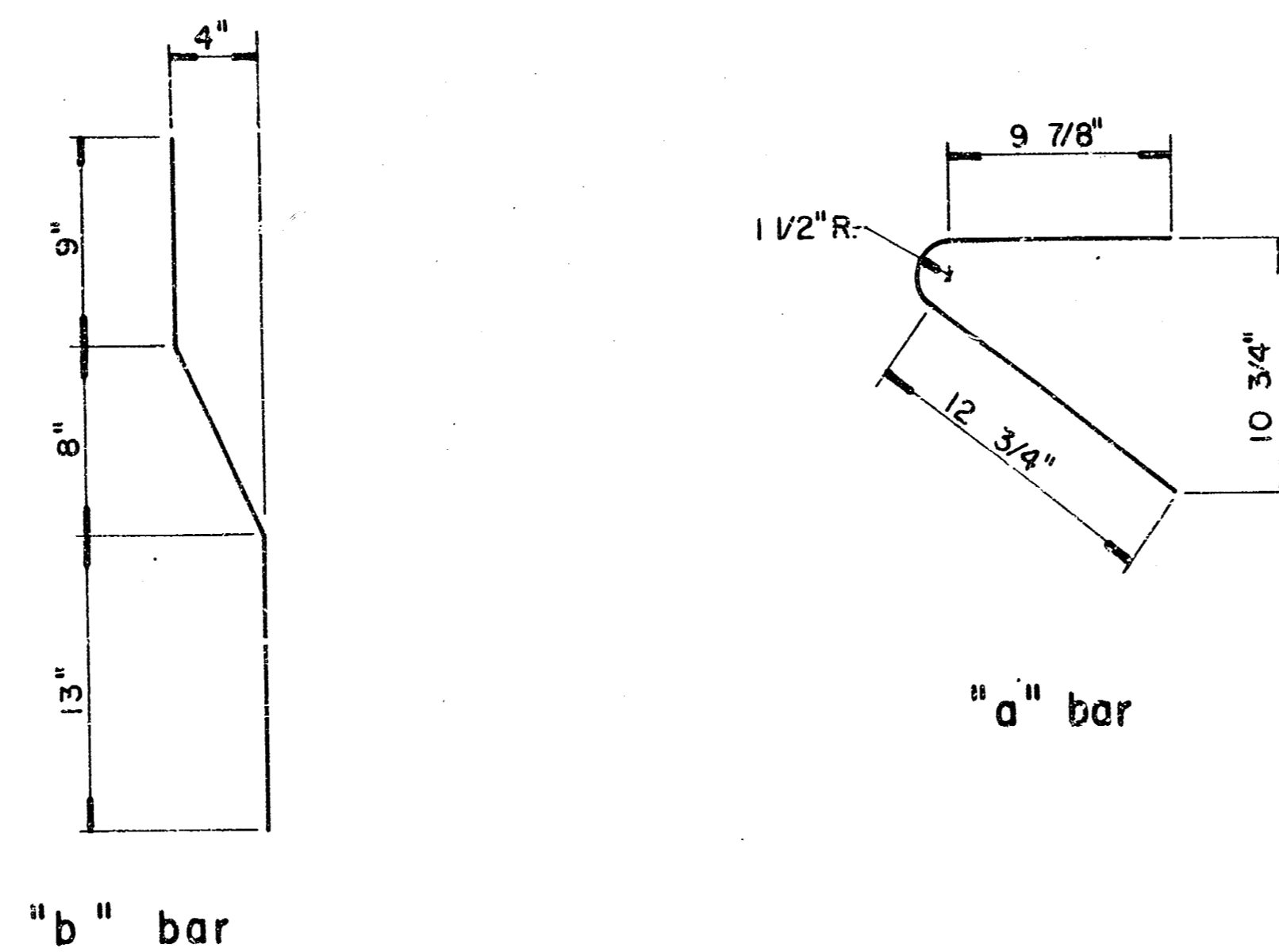
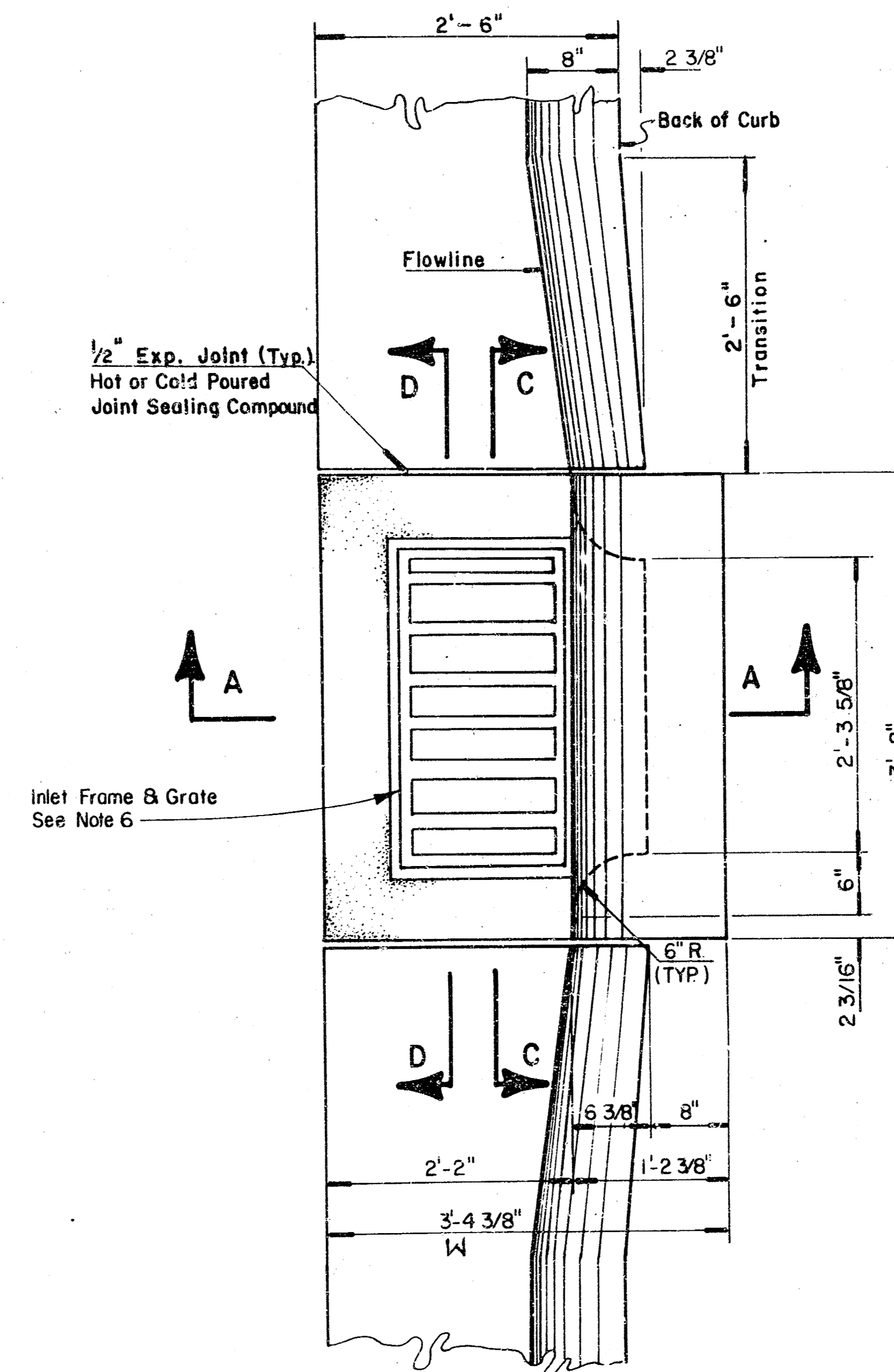
SECTION A-A



REAR WALL



SECTION D-D

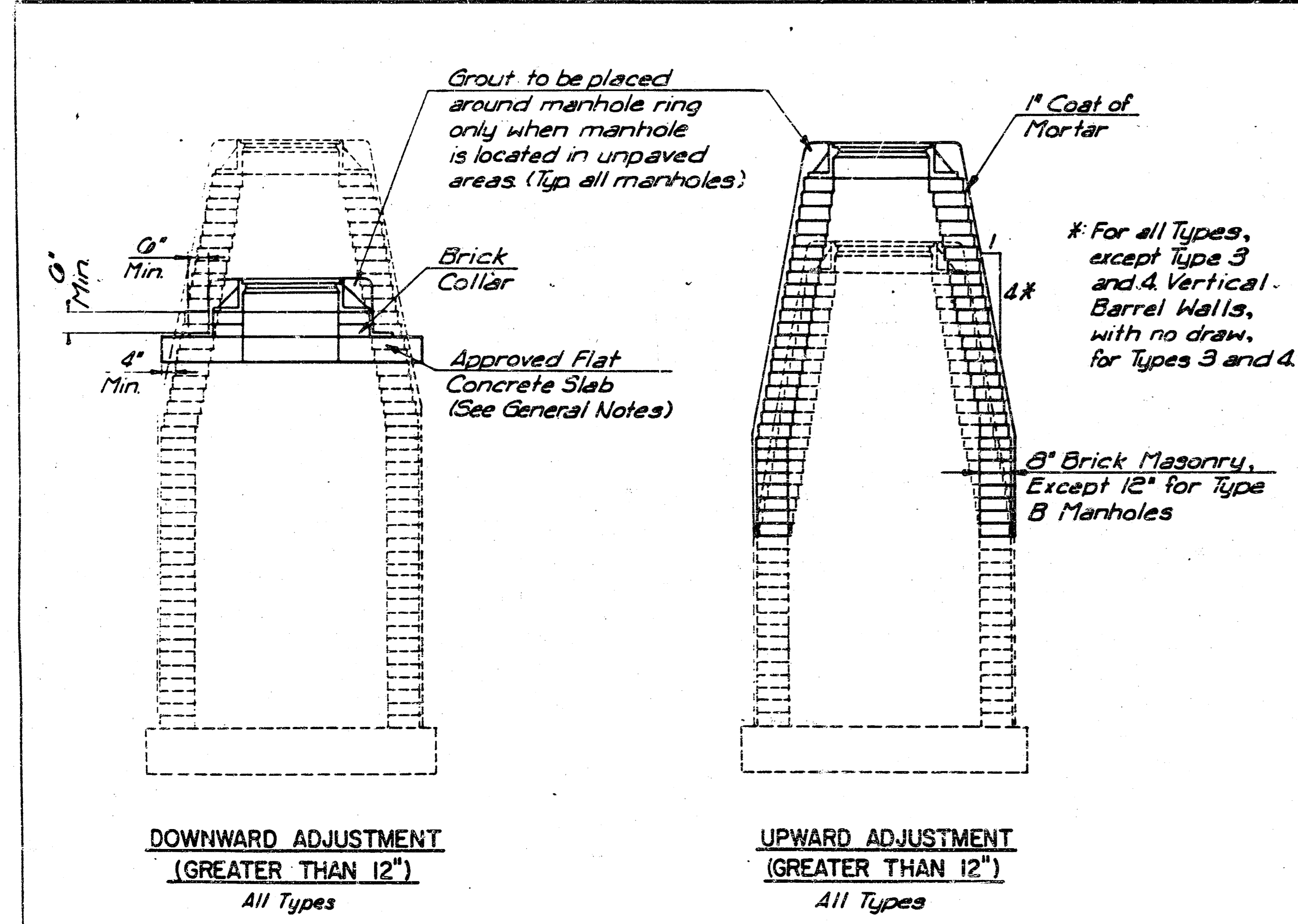
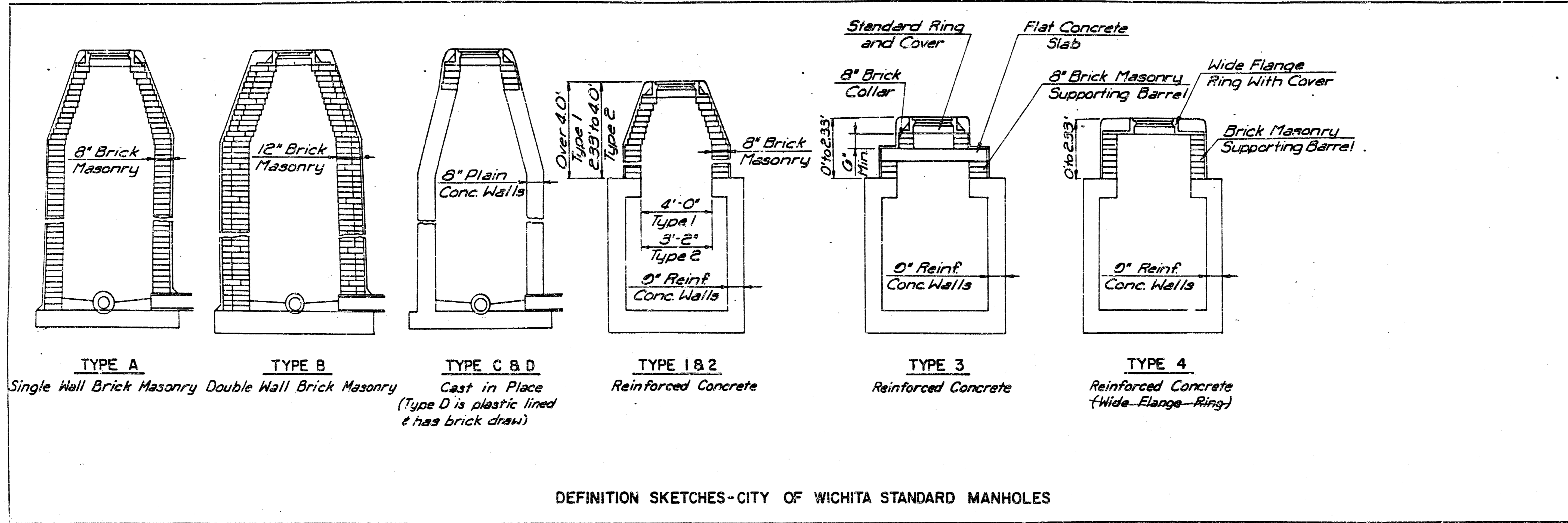


BENDING DIAGRAM

GENERAL NOTES:

1. Use the concrete mix specified for the City of Wichita concrete pavement throughout. All exposed edges shall be finished with an edging tool. Reinforcing bars shall be bent around pipe.
2. Inlet invert shall be shaped with 8 sack mix concrete to create flow channels and to increase hydraulic efficiency such that the inlet will be self cleaning between all inlet and/or outlet pipes.
3. All bars are #4 with 6" spacing and shall have a minimum clearance of 1 1/2 inches unless otherwise noted on the plans.
4. When directed by the Engineer, a small opening may be required in the back of the inlet in order to drain a low area. Reinforcing bars will extend through the openings. No deductions in concrete quantities will be made for these openings.
5. No deductions will be made in pay length of curb, gutter, or curb and gutter through the inlet area.
6. Use Neenah R-3289 HV Single Inlet Frame and Grate or approved equal. Inlet frames to be proof load tested to 40,000 lbs on unsupported side.
7. Reinforcing bars shall be cut or bent around pipes. No deduction in concrete quantities shall be made for pipe openings.
8. The vanes of the grate shall be oriented with respect to the flow arrows shown on the plans.

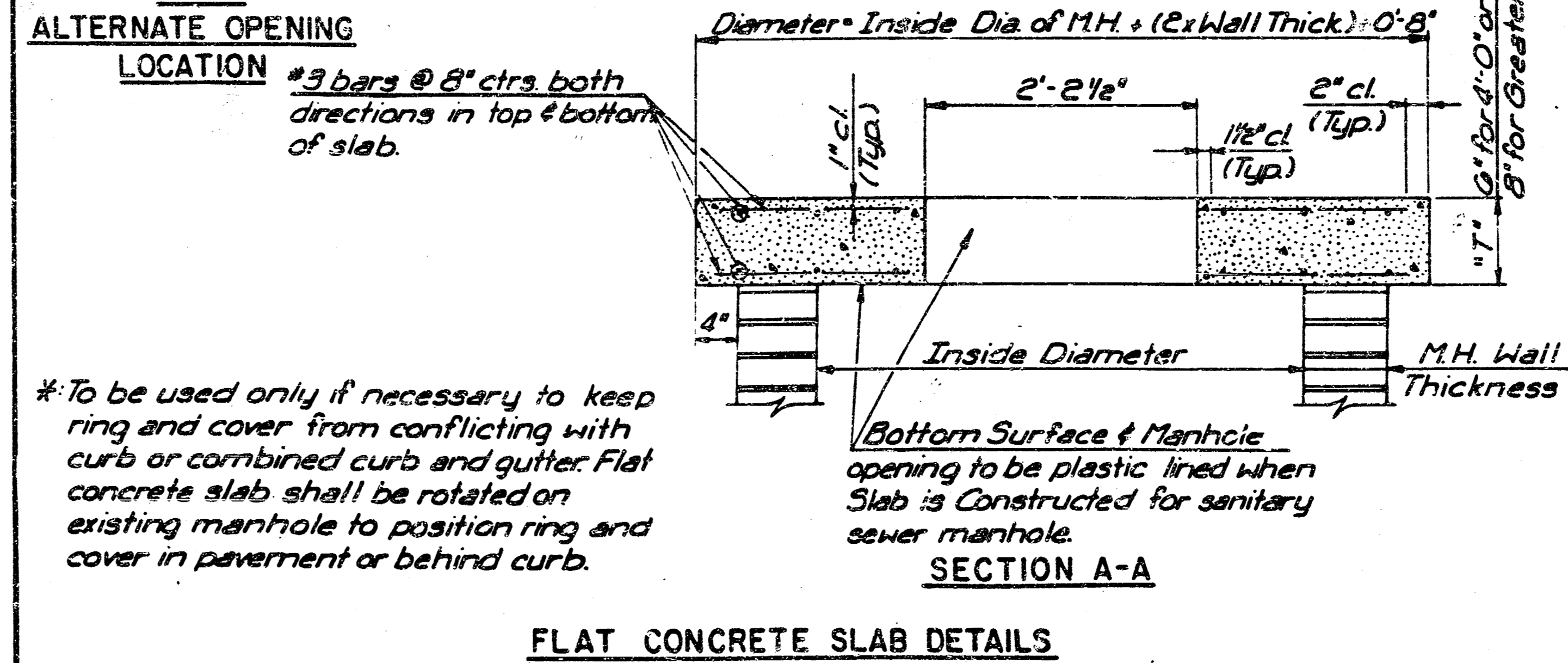
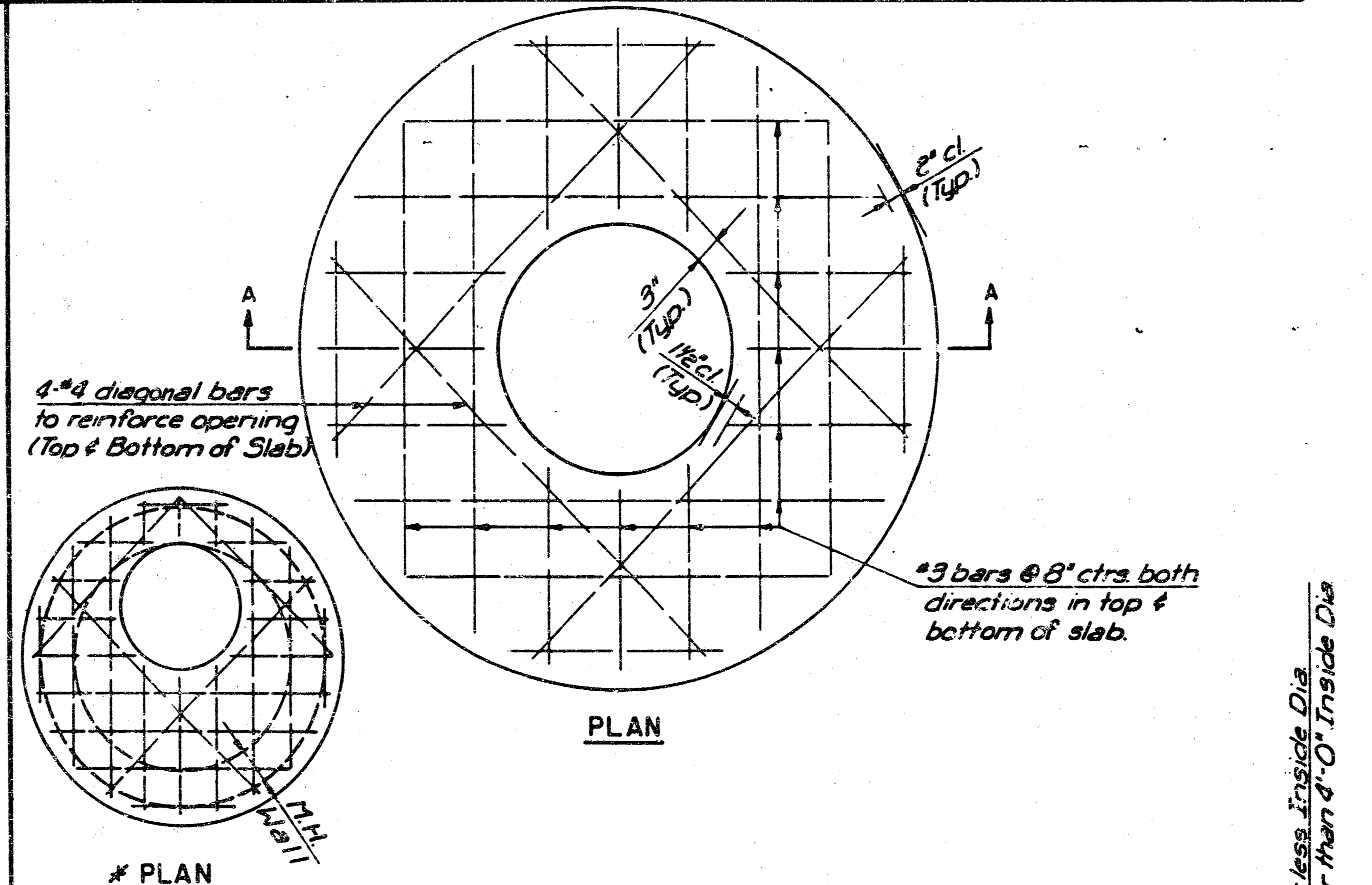
DETAIL STANDARD TYPE II CURB INLET
 CITY OF WICHITA, KANSAS
 INLET OPENING = 6"x2'-3 5/8"
 JANUARY, 1987



THE APPROPRIATE PORTIONS OF THE DRAW AND BARREL OF TYPE A, B, C, D, 1 AND 2 MANHOLES SHALL BE REMOVED. A FLAT CONCRETE SLAB SHALL BE PLACED AND THE RING AND COVER RESET. ALL WORK AND MATERIALS SHALL CONFORM TO THE DETAILS SHOWN AND THE GENERAL NOTES.

COURSES OF BRICK BARREL SUPPORTING THE WIDE FLANGE RING FOR TYPE 4 MANHOLES AND FLAT CONCRETE SLAB FOR TYPE 3 MANHOLES SHALL BE REMOVED AS NECESSARY PRIOR TO RESETTING THE WIDE FLANGE RING OR FLAT CONCRETE SLAB AND RING. ALL WORK AND MATERIALS SHALL CONFORM TO THE DETAILS SHOWN AND THE GENERAL NOTES.

THE ENTIRE DRAW OF TYPES A, B, C, D, 1 AND 2 MANHOLES SHALL BE REMOVED, THE MANHOLE BARREL RAISED THE APPROPRIATE AMOUNT, A NEW DRAW CONSTRUCTED, AND THE RING AND COVER RESET. THE UPPER PORTION OF TYPE 3 MANHOLES SHALL BE REMOVED TO THE BOTTOM OF THE FLAT CONCRETE SLAB, THE BRICK MASONRY BARREL SUPPORTING THE SLAB SHALL BE RAISED THE APPROPRIATE AMOUNT, AND THE SLAB AND RING AND COVER RESET. THE WIDE FLANGE RING AND COVER OF TYPE 4 MANHOLES SHALL BE REMOVED, THE BRICK MASONRY BARREL SUPPORTING THE RING SHALL BE RAISED THE APPROPRIATE AMOUNT AND THE RING AND COVER RESET. ALL WORK REQUIRED FOR A GREATER THAN TWELVE INCH (12") UPWARD ADJUSTMENT OF ANY MANHOLE SHALL BE ACCOMPLISHED WITH BRICK MASONRY IN ACCORDANCE WITH THE DETAILS SHOWN AND THE GENERAL NOTES.



MANHOLE ADJUSTMENT DETAILS

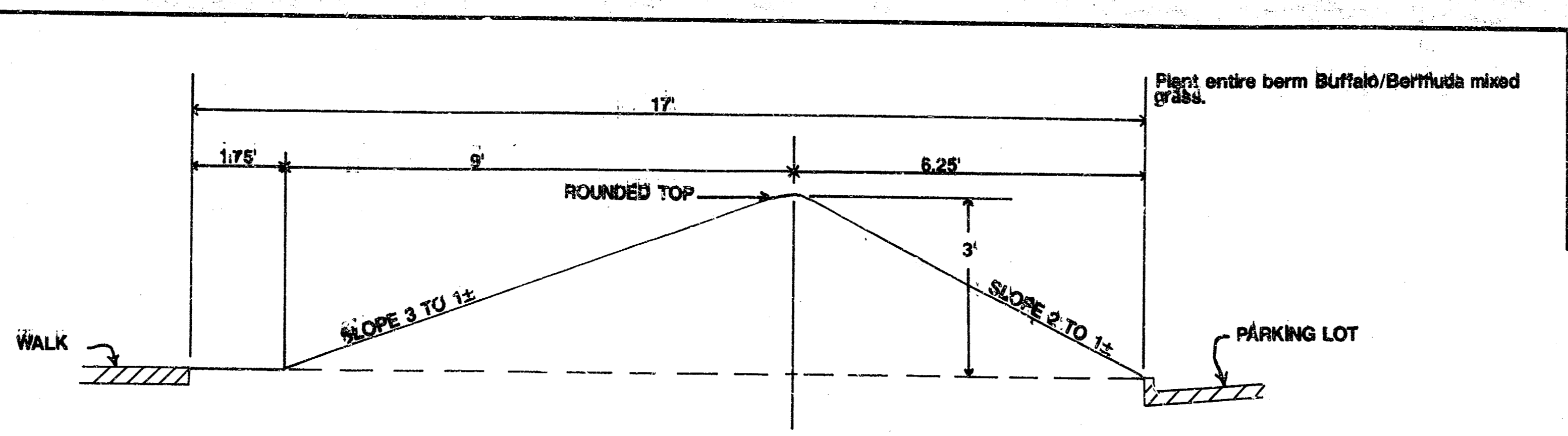
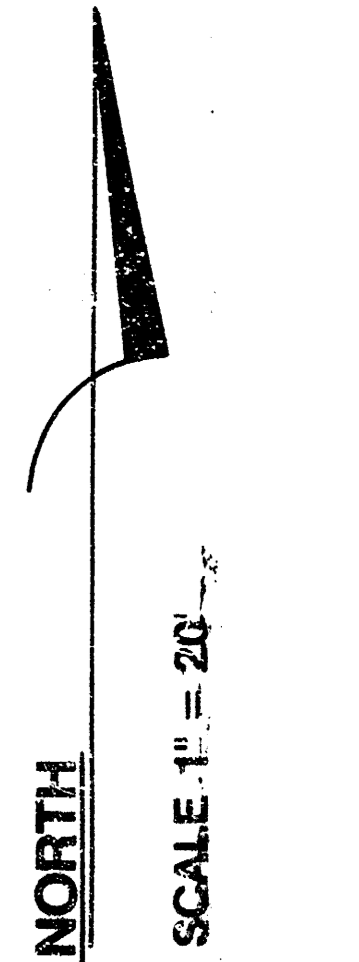
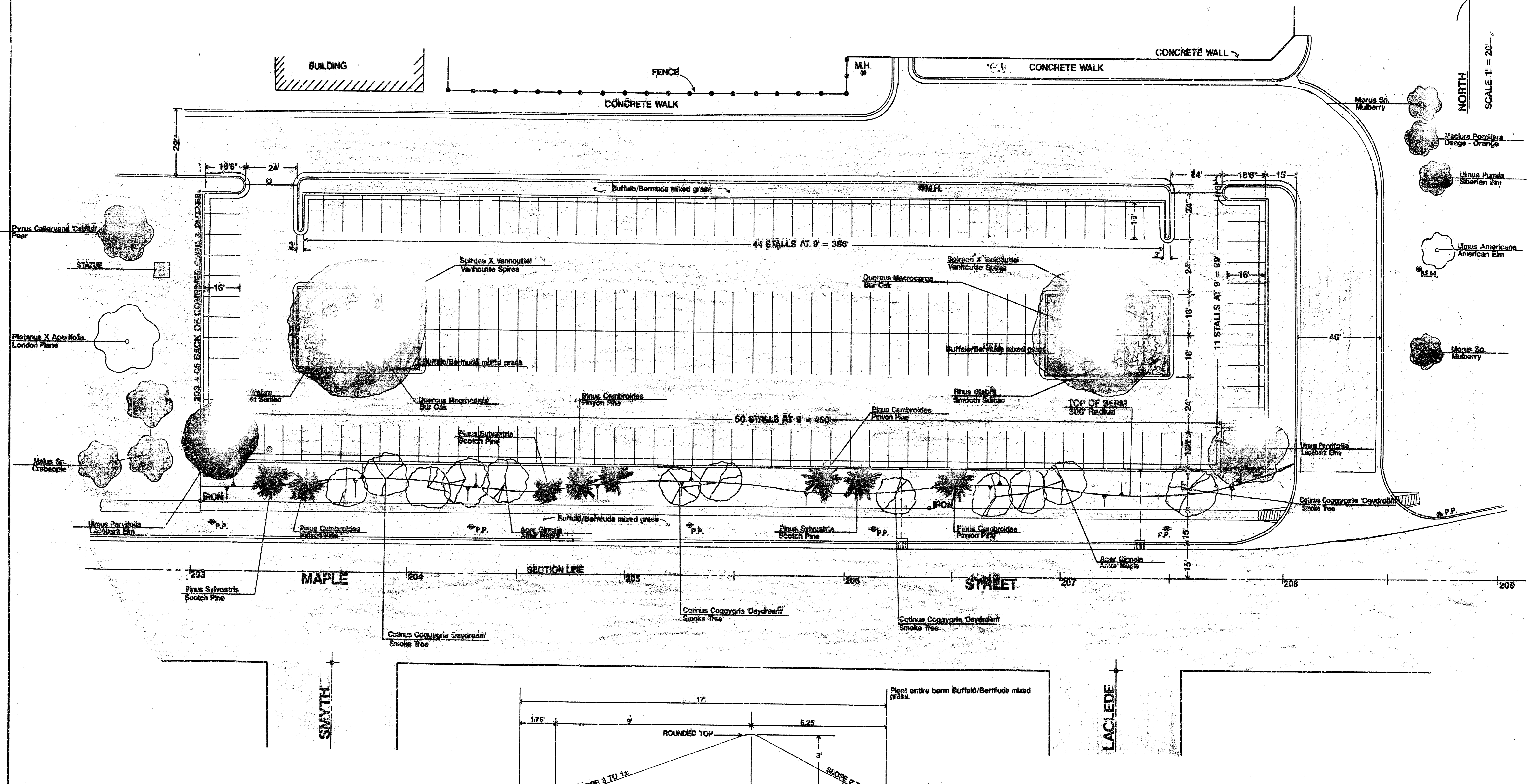
CITY OF WICHITA, KANSAS
M. E. LINDEBAK - CITY ENGINEER

Designed by _____ Checked by _____
Drawn by _____ Date _____ JOB No. _____

LAWRENCE DUMONT STADIUM

NOTE: THIS SHEET PROVIDED AS INFORMATION ONLY. LANDSCAPE PLANTINGS SHOWN ON THIS SHEET WILL BE INSTALLED BY CITY PARK FORCES.

TOTAL: 180 STALLS



TYPICAL SECTION OF BERM

DESCRIPTION		
PUBLIC PARKING LOT AT 400 W. MAPLE		
SCALE: 1" = 20'	APPROVED BY:	DRAWN BY:
DATE: JUNE '91		KD, SC, JKB
CITY OF WICHITA		
DRAWING NUMBER: 14302		