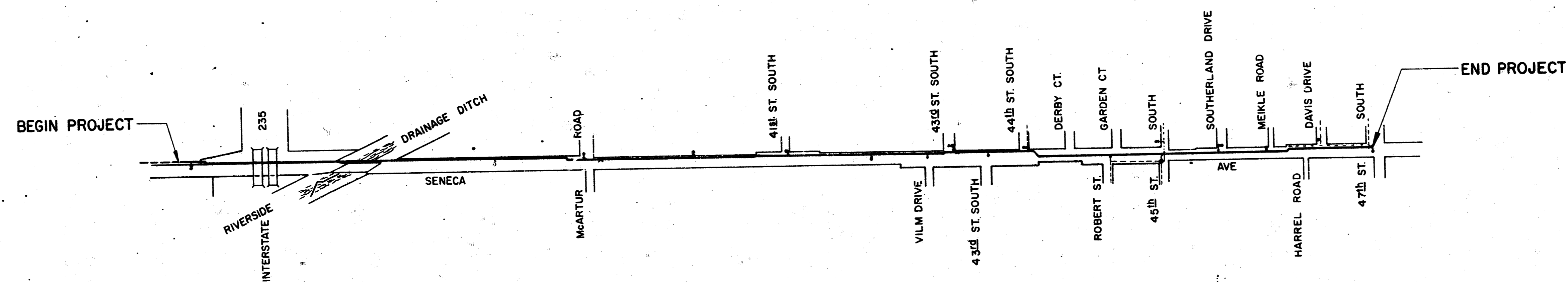


CITY OF WICHITA  
**WATER DEPARTMENT**  
 DESIGN & PLANNING DIVISION  
**PLAN AND PROFILE OF  
 WATER MAIN CONSTRUCTION**



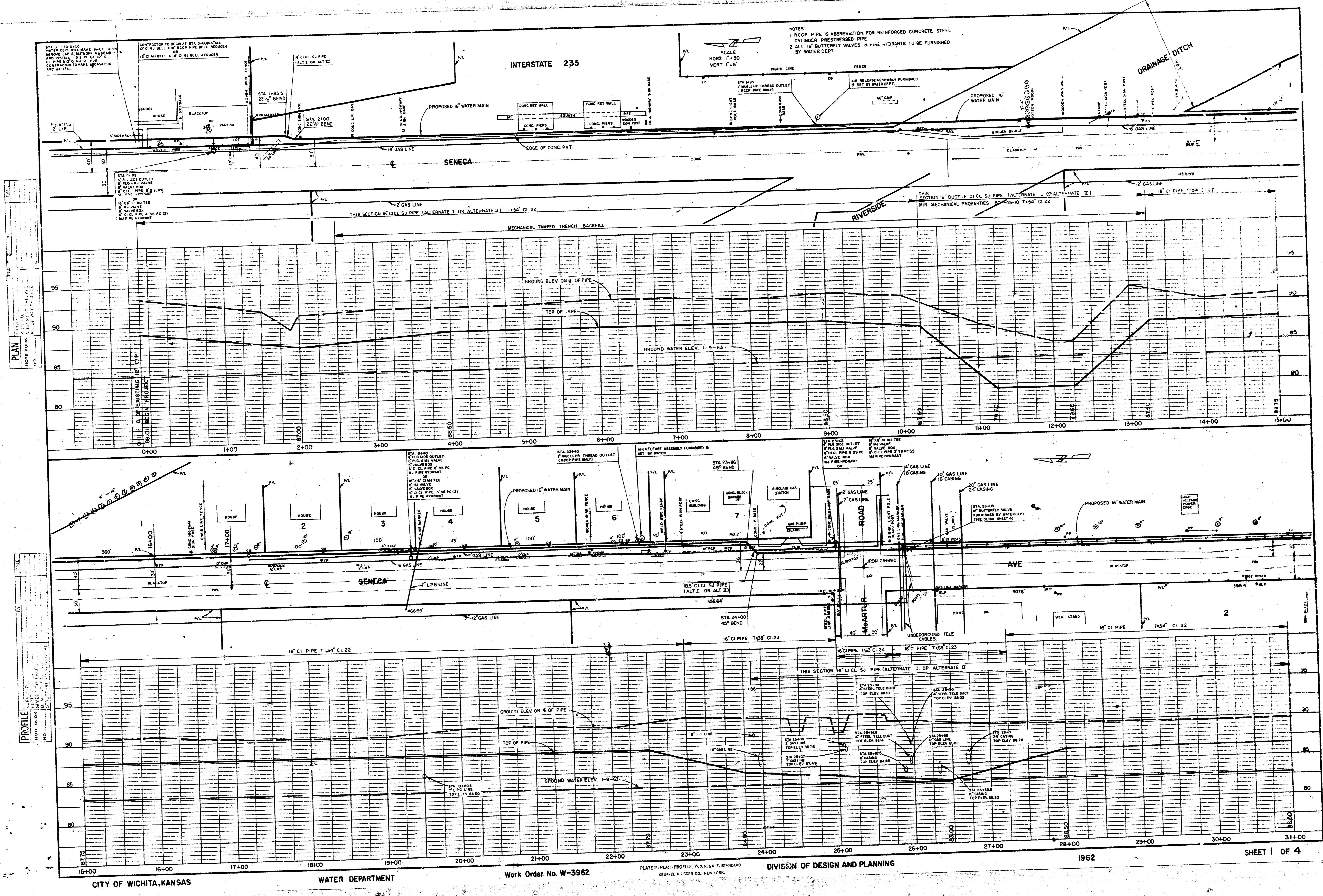
LEGEND

PROPOSED 16" WATER MAIN	.....
PROPOSED FIRE HYDRANT	.....
PROPOSED VALVE (16")	.....
EXISTING WATER MAIN	.....
PROPOSED OUTLET WITH VALVE	.....

Scale 1" = 400'

RECOMMENDED FOR APPROVAL  
*Bill H. Ottum*  
 Supt. of Design & Planning

APPROVED  
*Foster S. Burk*  
 Operations Chief Engineer



CITY OF WICHITA, KANSAS

WATER DEPARTMENT

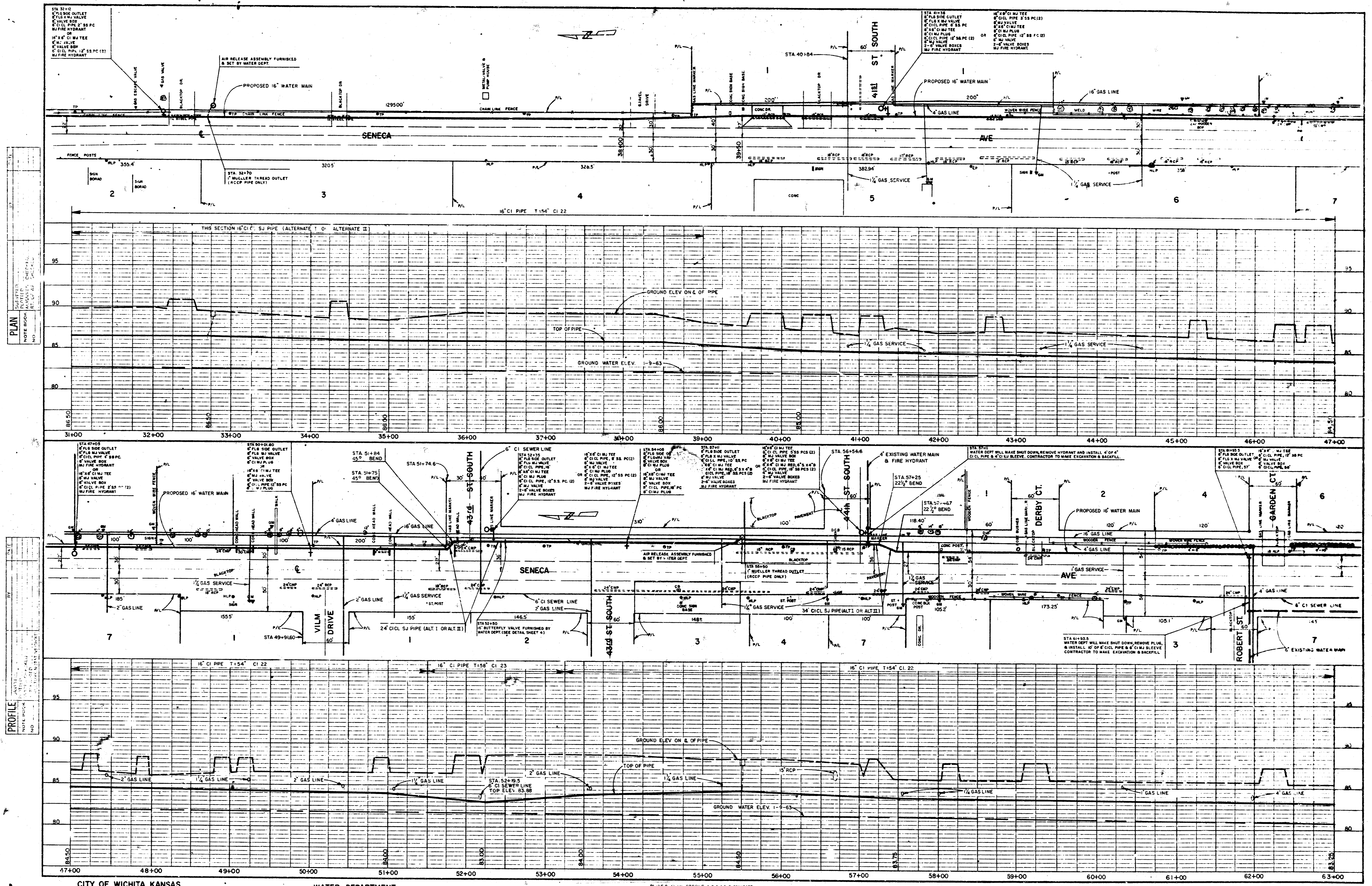
Work Order No. W-3962

PLATE 2: PLAN, PROFILE, & P.L.L. & B.S. DRAWING  
 HURTLE & HERR CO., NEW YORK

DIVISION OF DESIGN AND PLANNING

1962

SHEET 1 OF 4

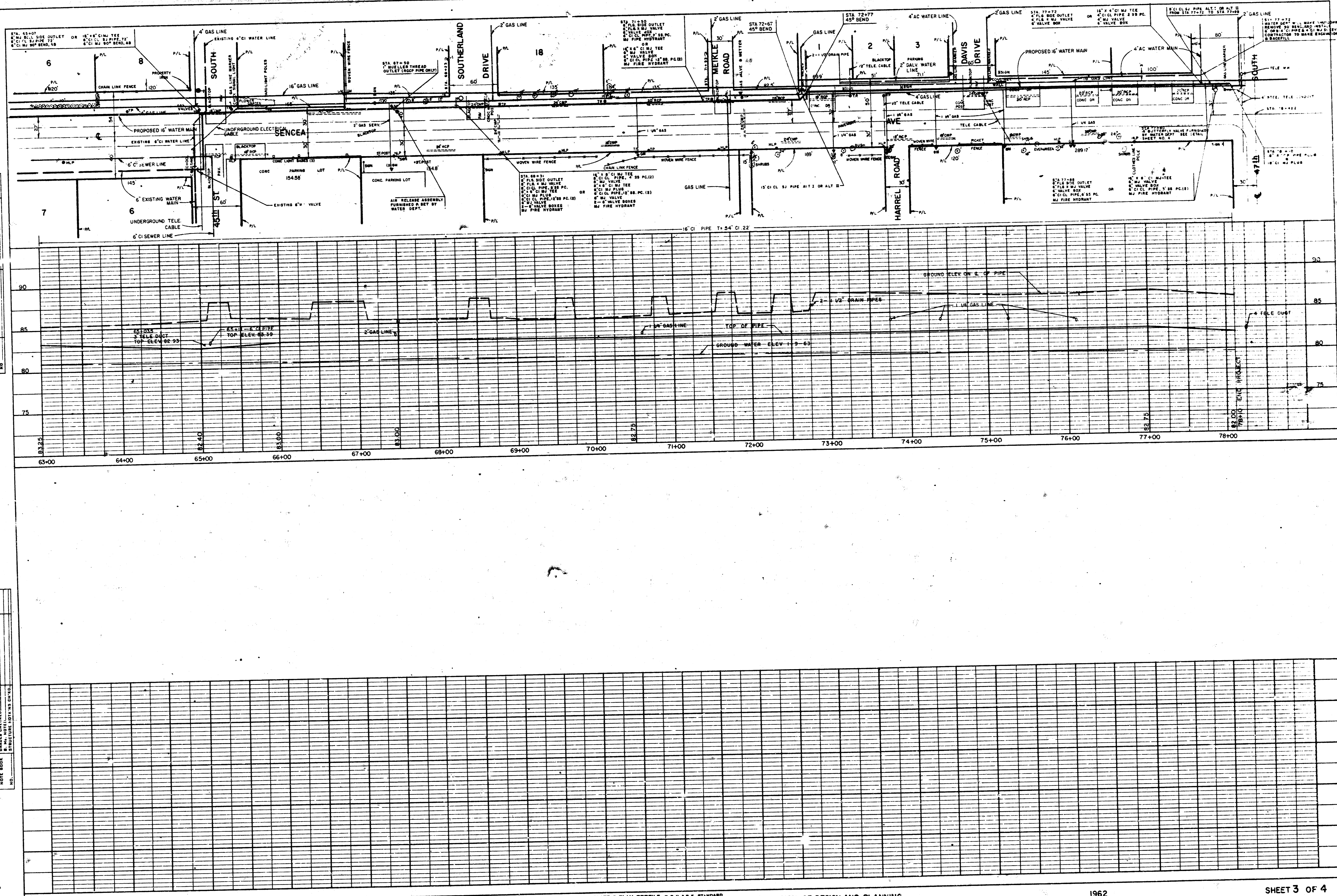


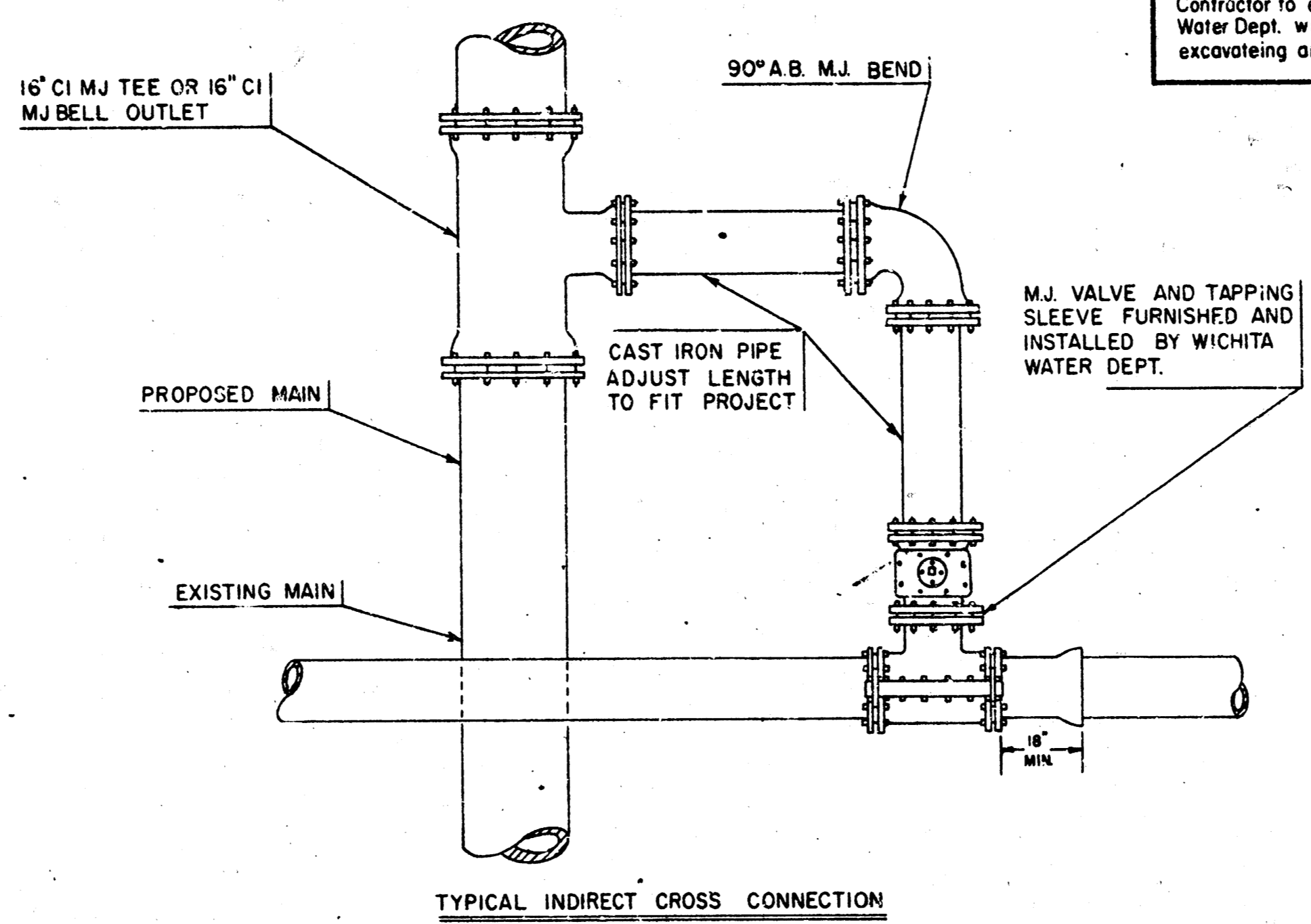
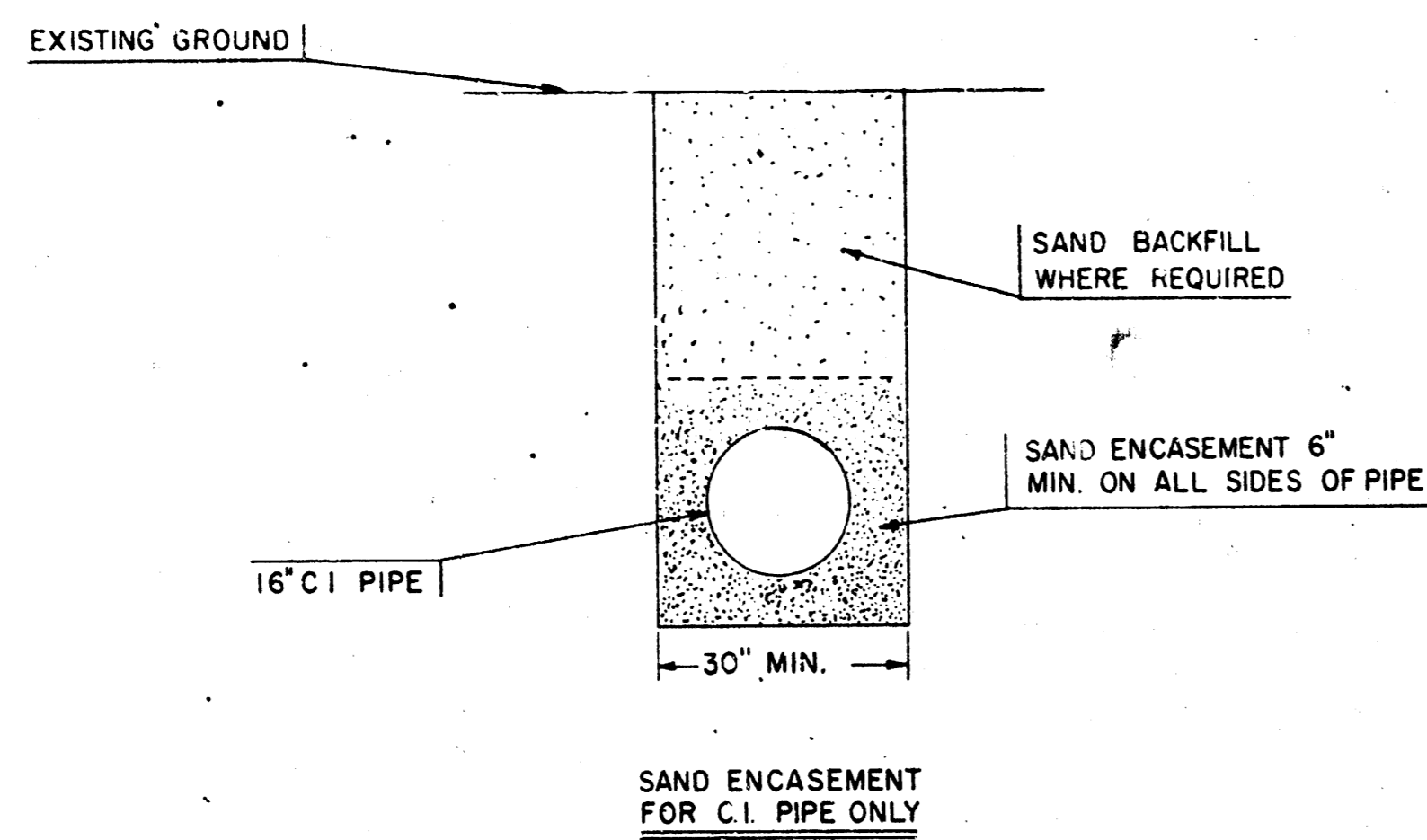
PLAN  
 HOPE BISHOP  
 10/1/62

PROFILE  
 HOPE BISHOP  
 10/1/62

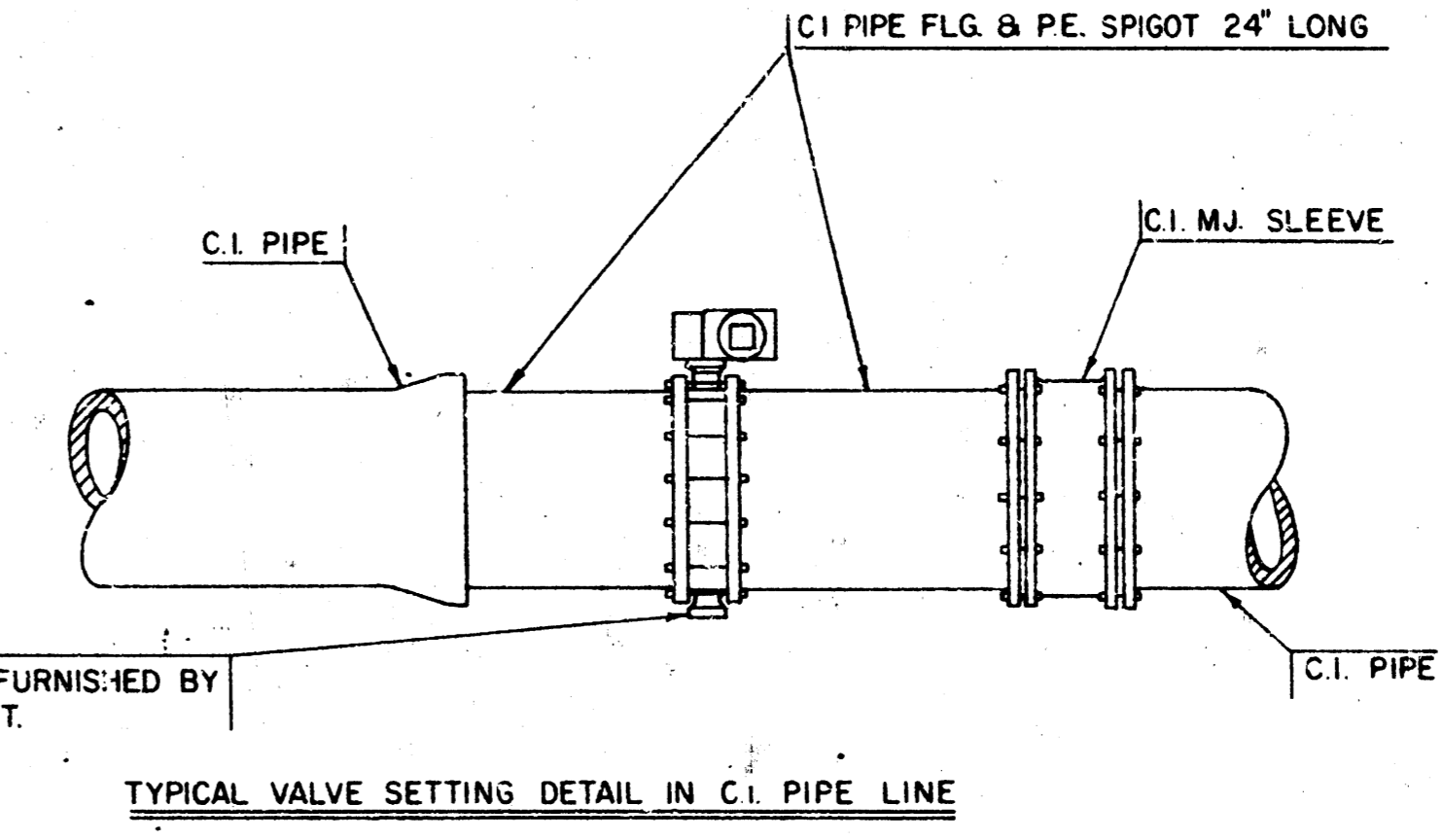
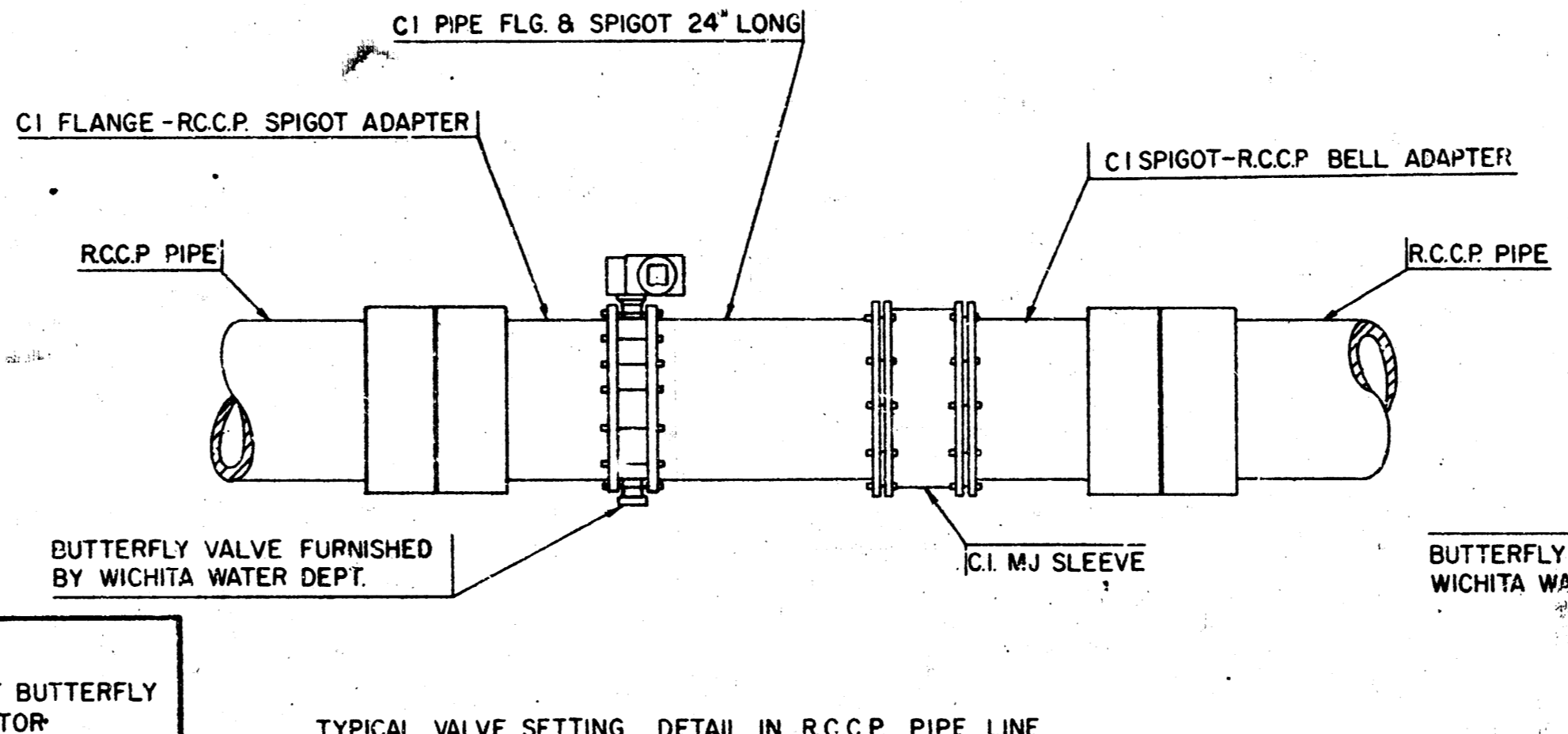
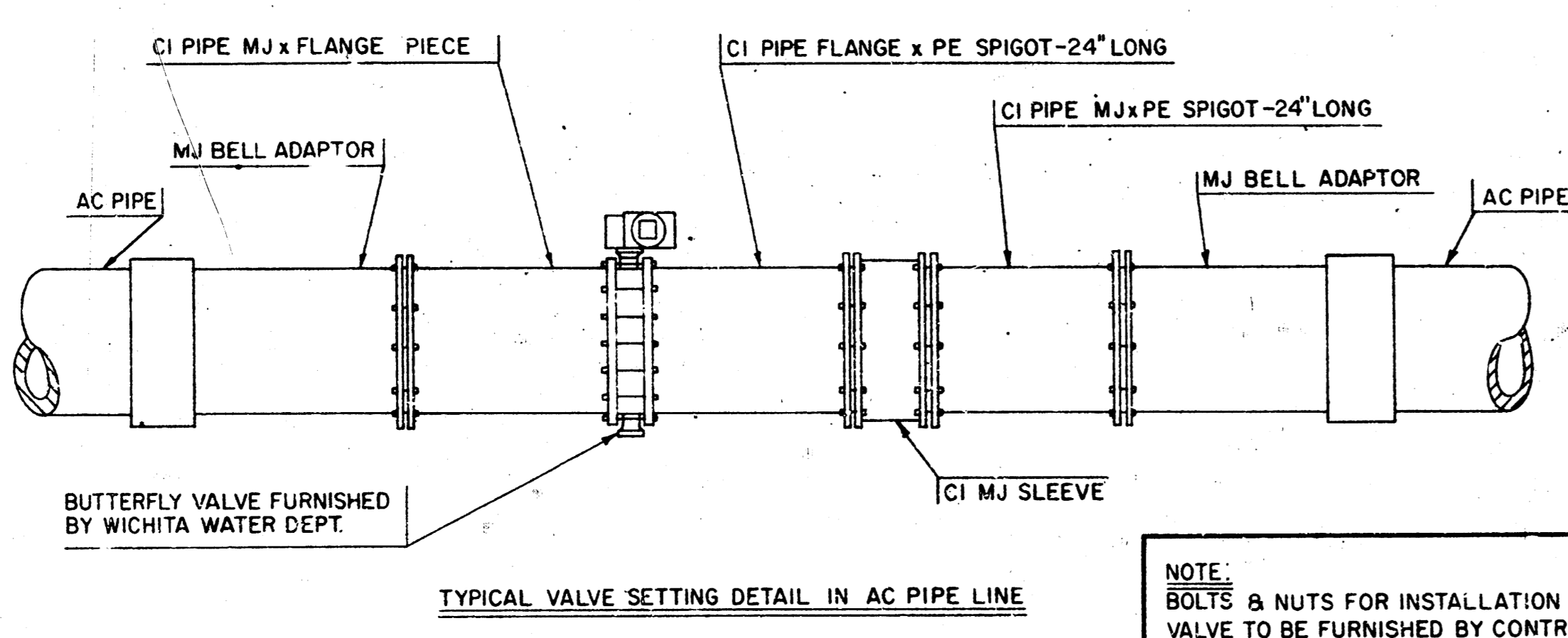
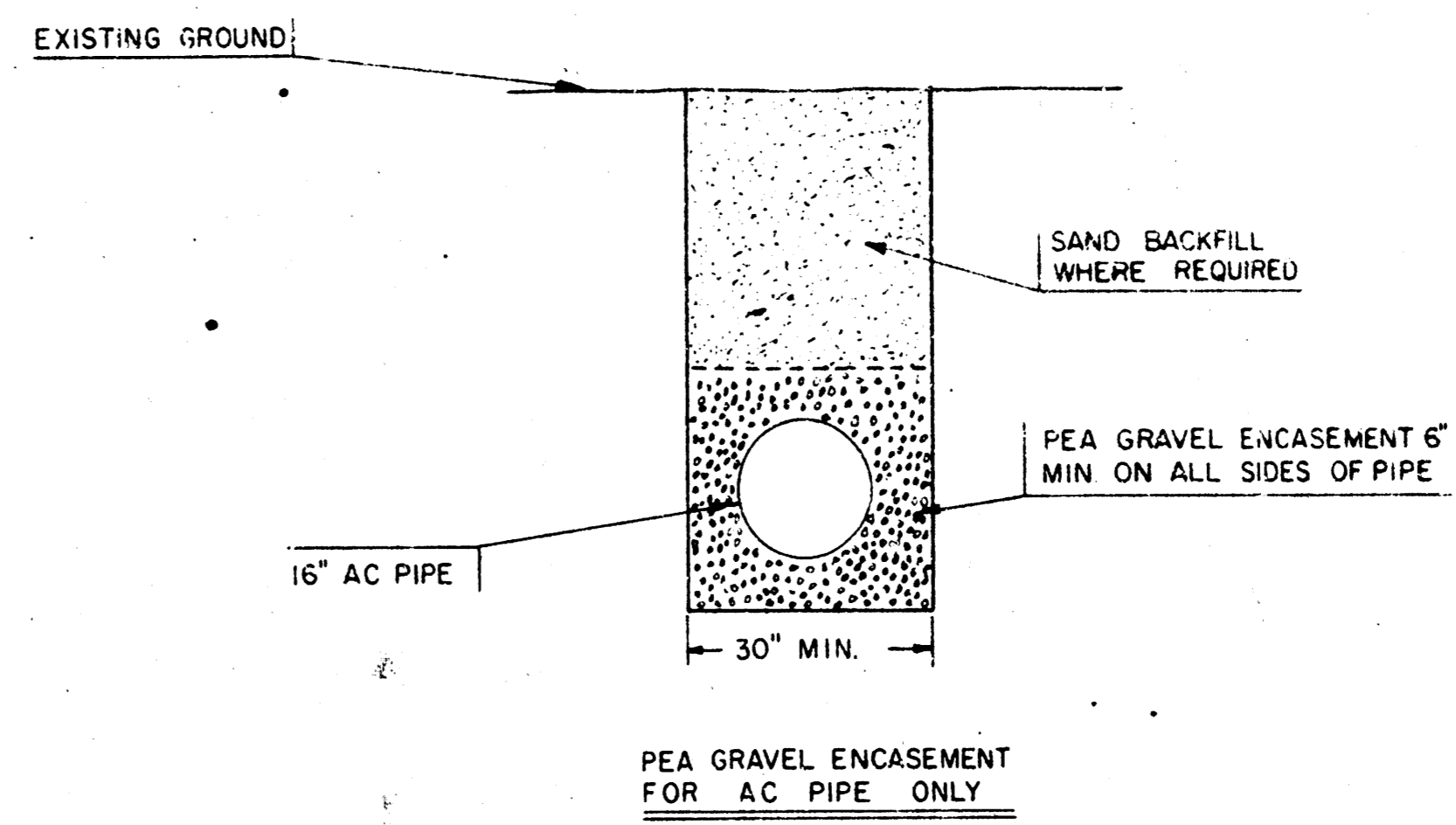
DATE	
BY	
PROJECT	
DATE	
BY	
PROJECT	
DATE	
BY	
PROJECT	

DATE	
BY	
PROJECT	
DATE	
BY	
PROJECT	
DATE	
BY	
PROJECT	

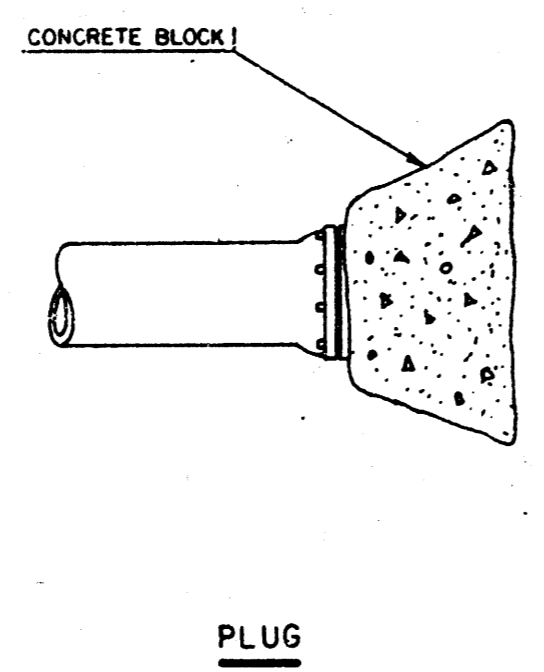
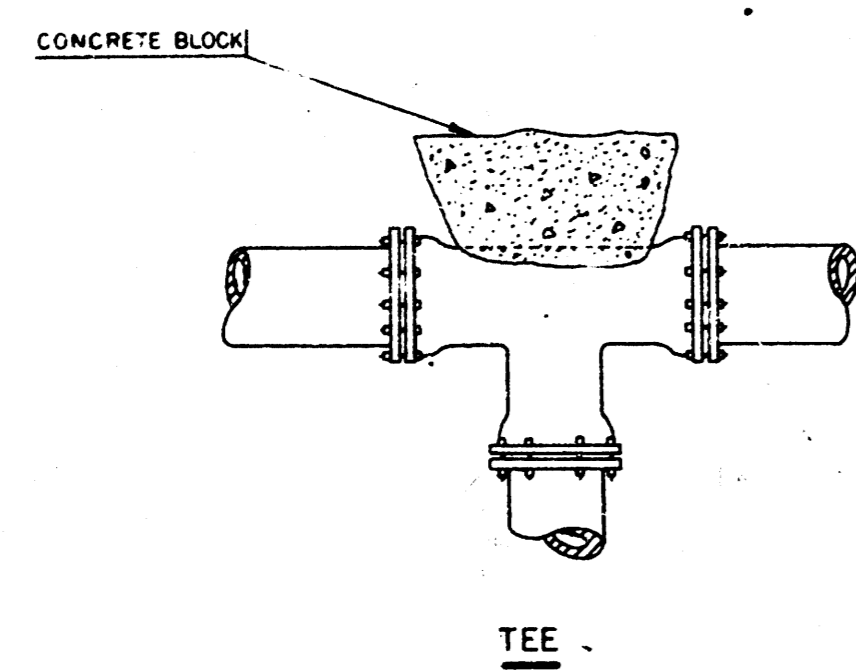




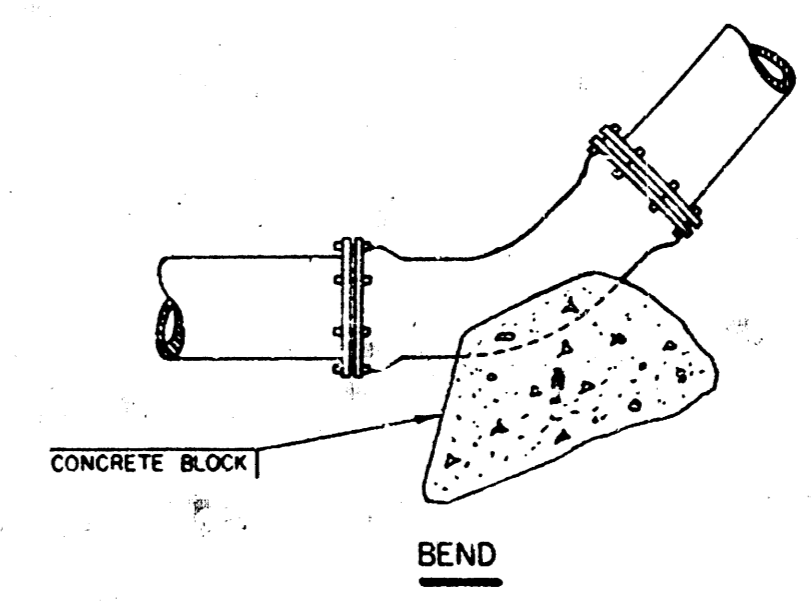
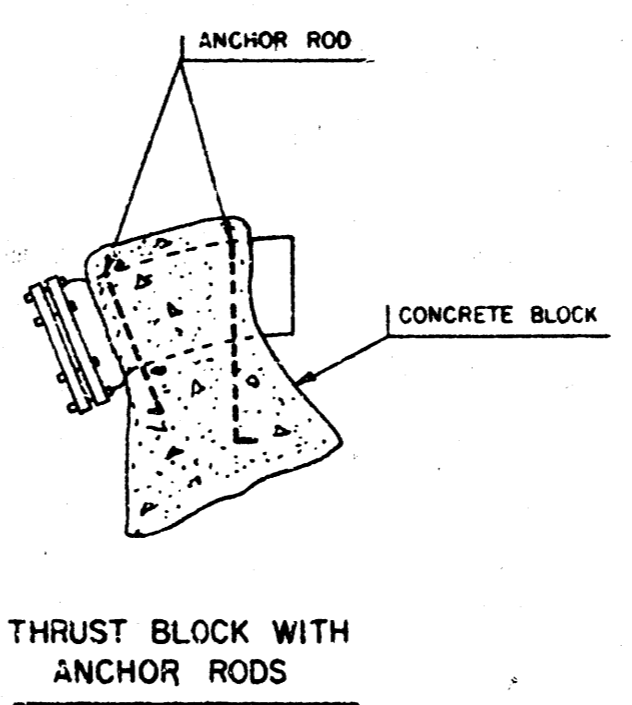
**Note:**  
Contractor to excavate and prepare top hole, Water Dept. will make tap on existing main, excavating and backfill at extra cost!



**NOTE:**  
BOLTS & NUTS FOR INSTALLATION OF BUTTERFLY VALVE TO BE FURNISHED BY CONTRACTOR



PIPE SIZE	THRUST AT FITTINGS IN TONS - AT 150' IN <sup>2</sup> P.					
	PLUG	90°	45°	22 1/2°	1 1/4°	TEE
6"	2.12	2.968	1.613	.827	.416	2.12
8"	3.76	5.33	2.88	1.470	.740	3.76
12"	8.48	11.99	6.49	3.209	1.66	8.48
16"	15.07	21.32	11.54	5.88	2.96	15.07



TYPICAL THRUST BLOCKS

CITY OF WICHITA WATER DEPARTMENT DESIGN AND PLANNING DIVISION			
DATE	APPROVED BY	DESIGNED BY	REVISED
12-14-62		T.W.Z.	
DETAIL SKETCHES			
JOB: 16" MAIN 1H SENECA AVE FROM 35th ST SOUTH TO 47th ST SOUTH			W.D. Number W-3962