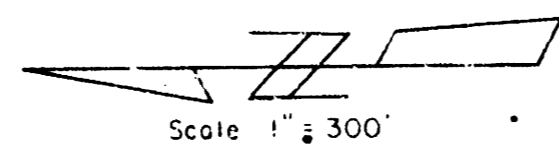


CITY OF WICHITA  
 WATER DEPARTMENT  
 DESIGN & PLANNING DIVISION  
 PLAN AND PROFILE OF  
**WATER MAIN CONSTRUCTION**  
 1965

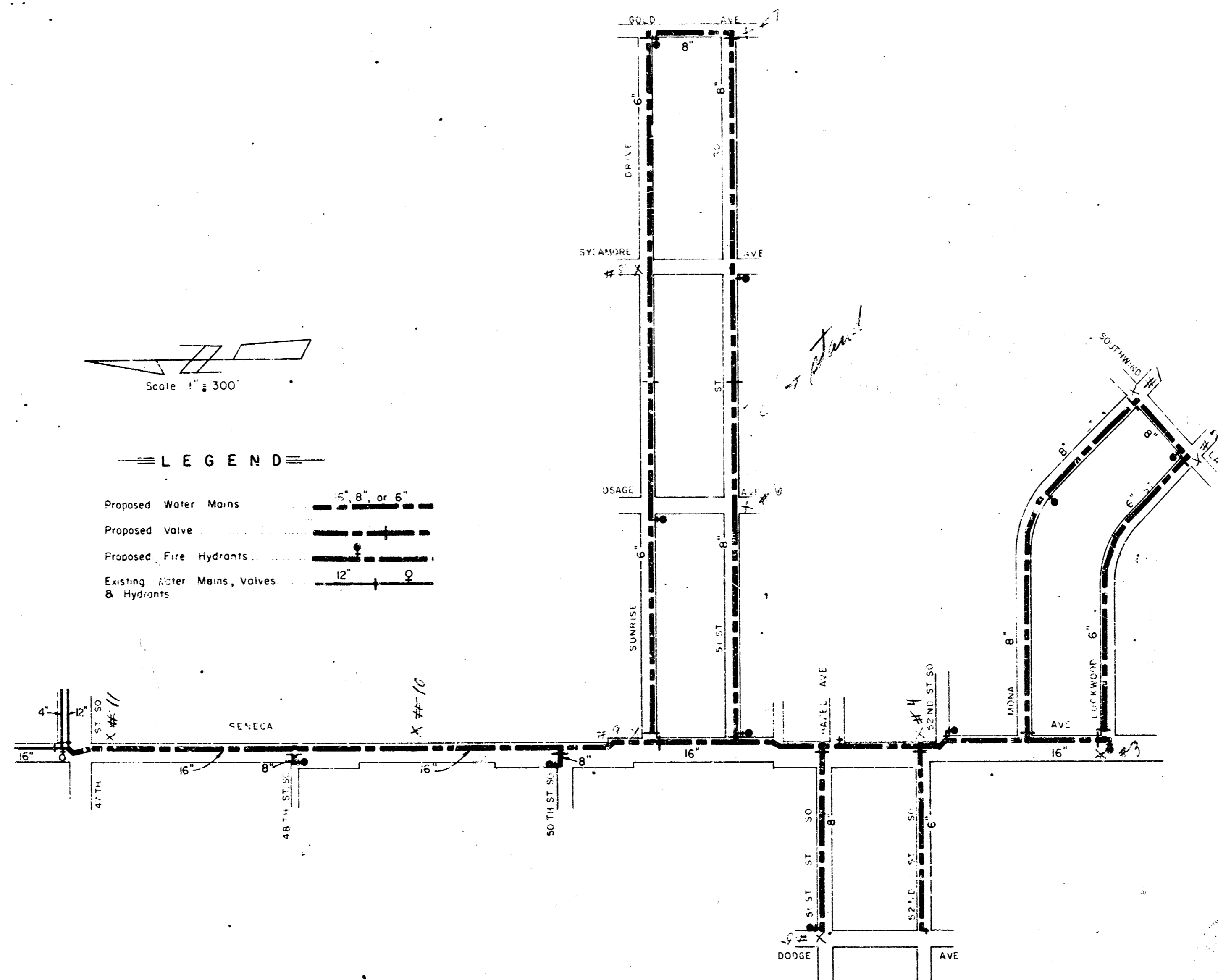


Scale 1" = 300'

LEGEND

- Proposed Water Mains 12", 8", or 6"
- Proposed Valve
- Proposed Fire Hydrants
- Existing Water Mains, Valves & Hydrants

*2 Seneca  
 3 1st  
 3 1/2 2nd  
 2 3rd  
 5 4th  
 4 5th  
 9 6th*

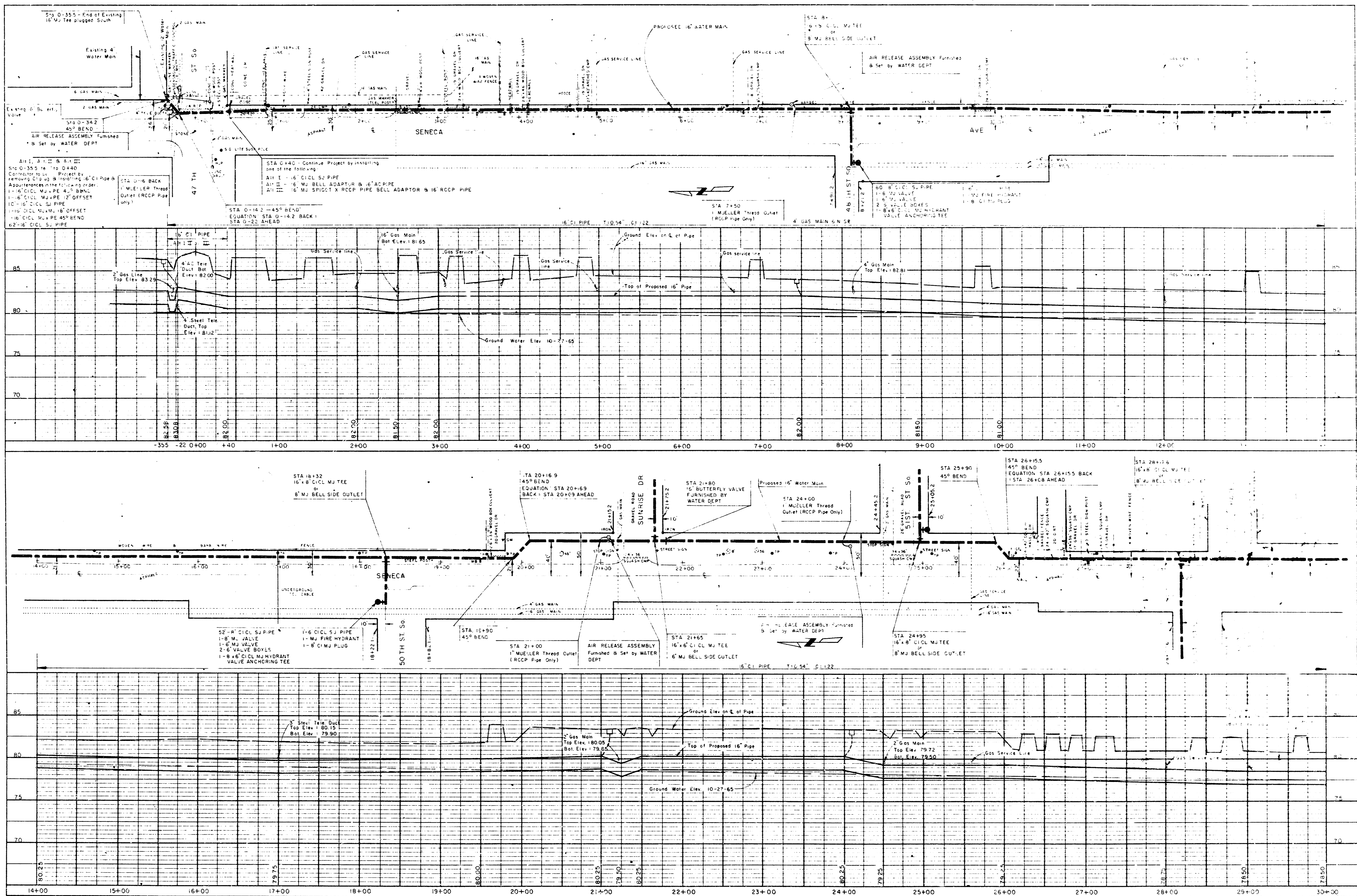


RECOMMENDED FOR APPROVAL

*Bill R. Ottew*  
 Supt. of Design & Planning

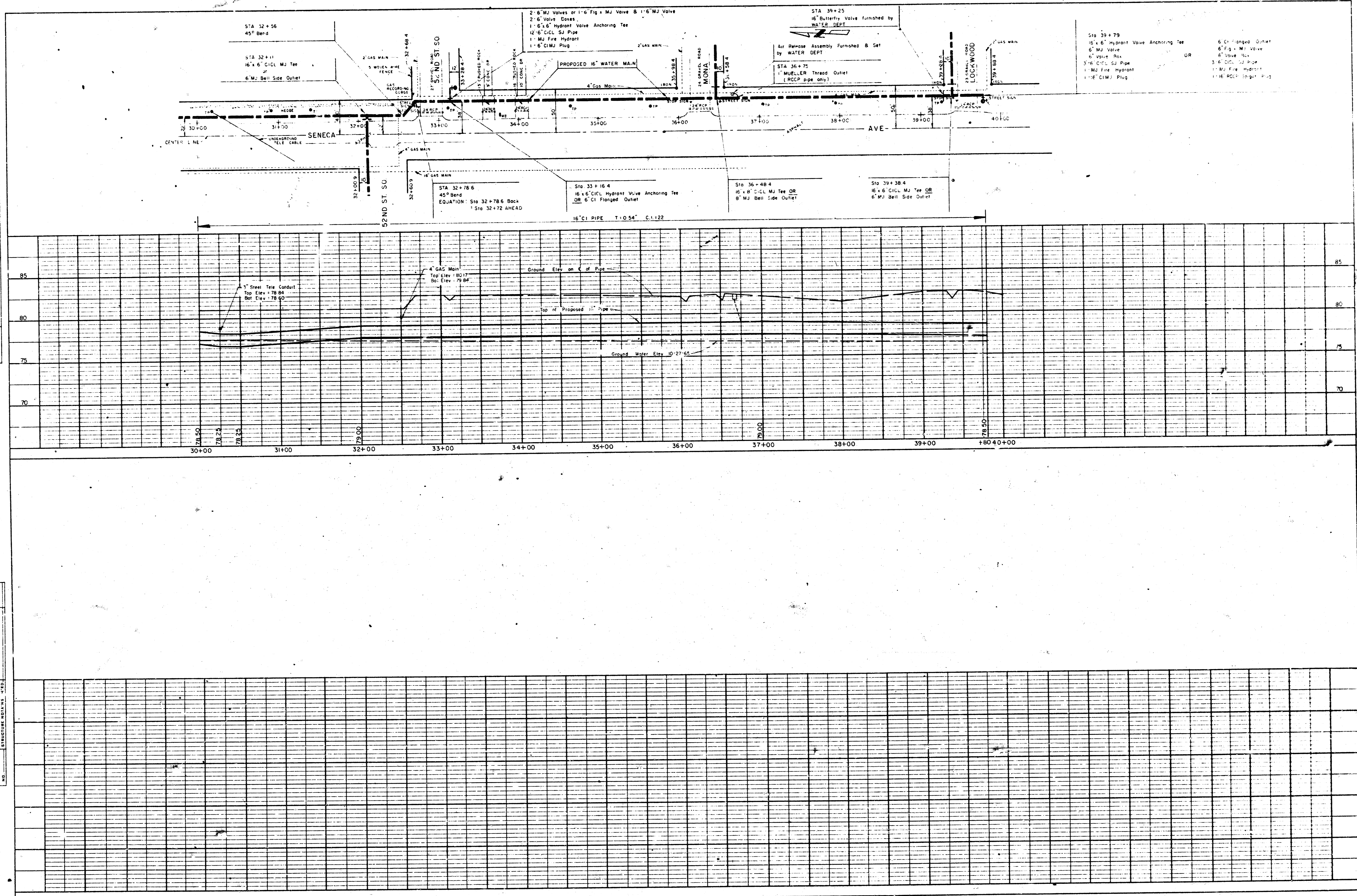
APPROVED

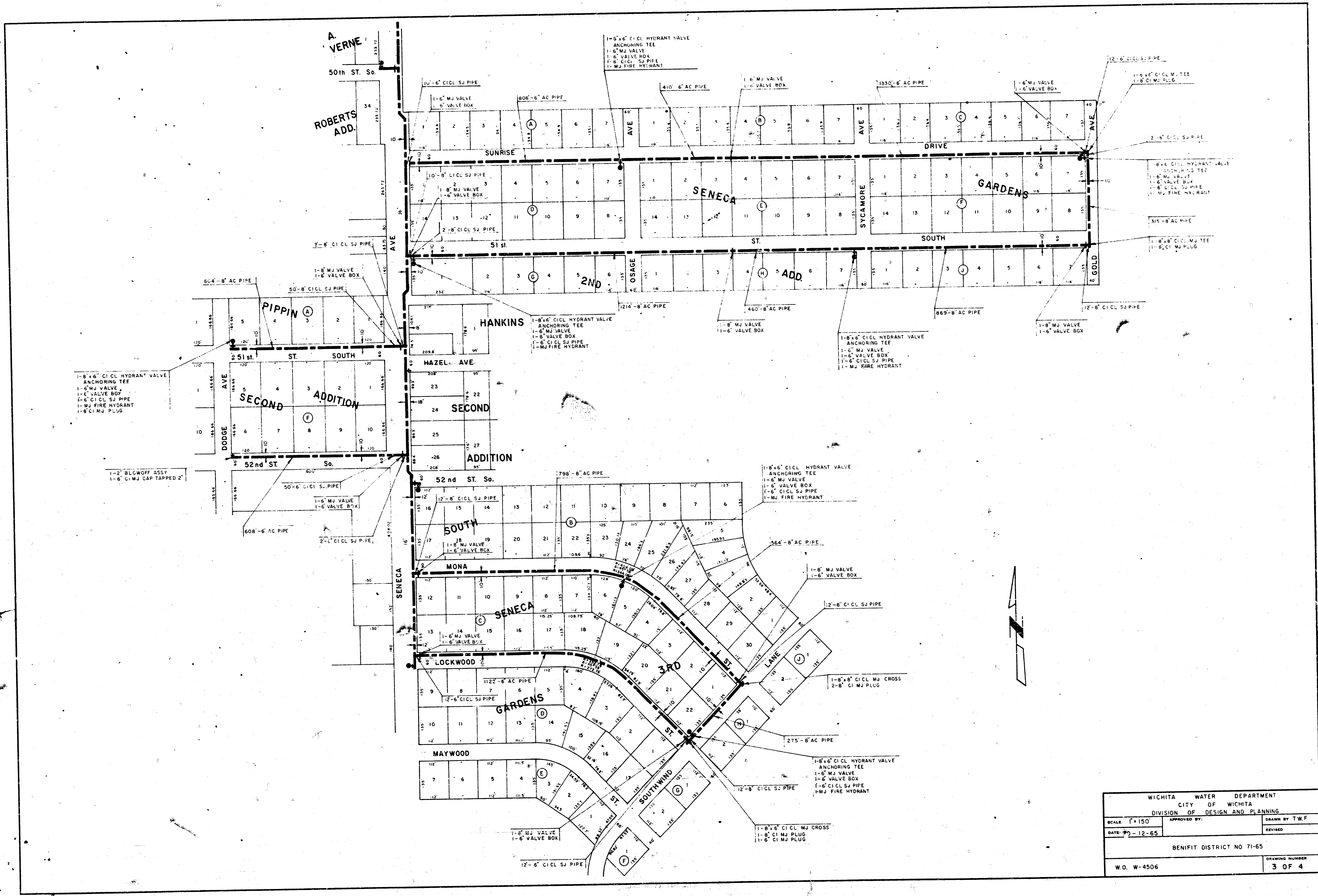
*John S. Bunch*  
 Operations Chief Engineer



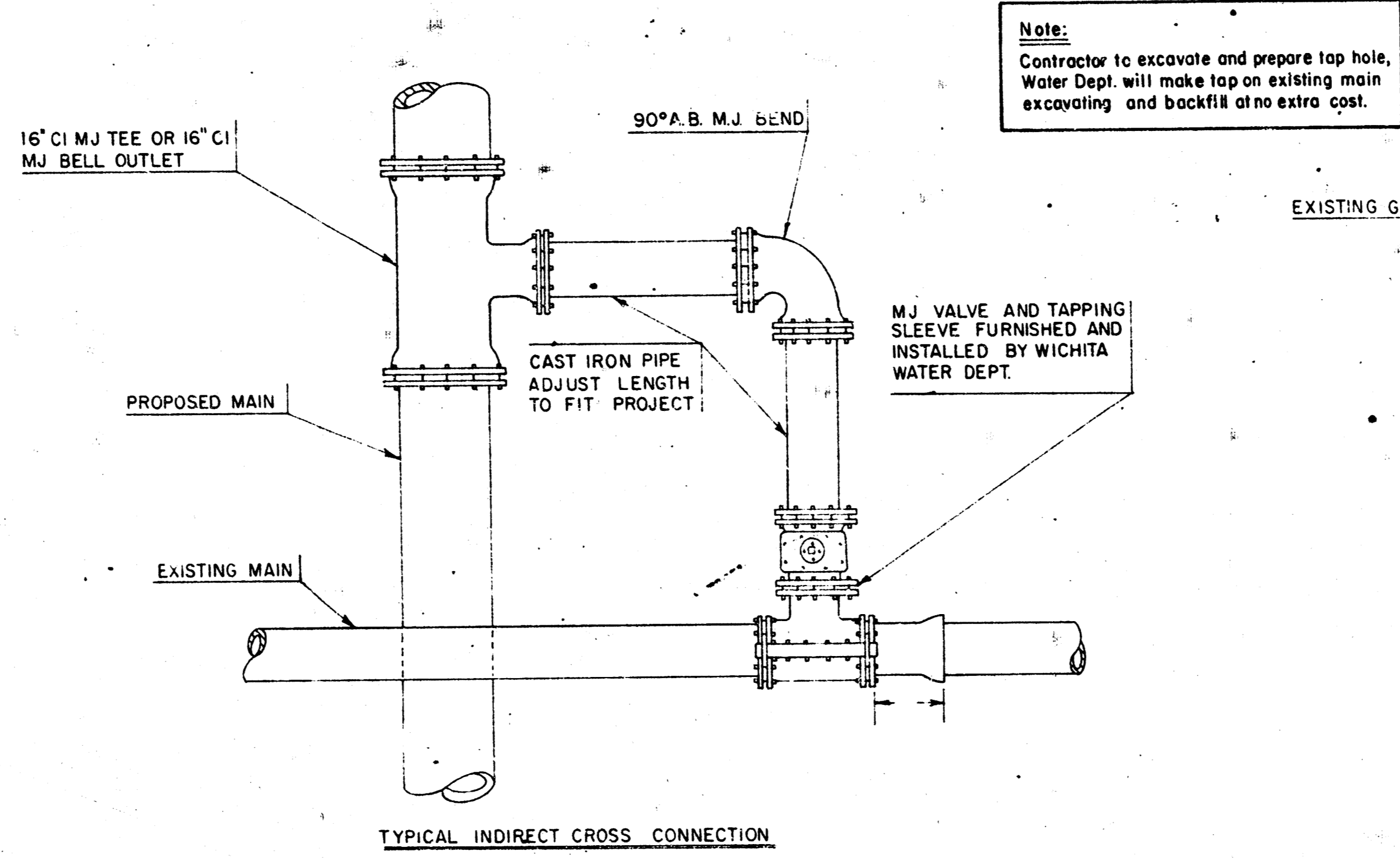
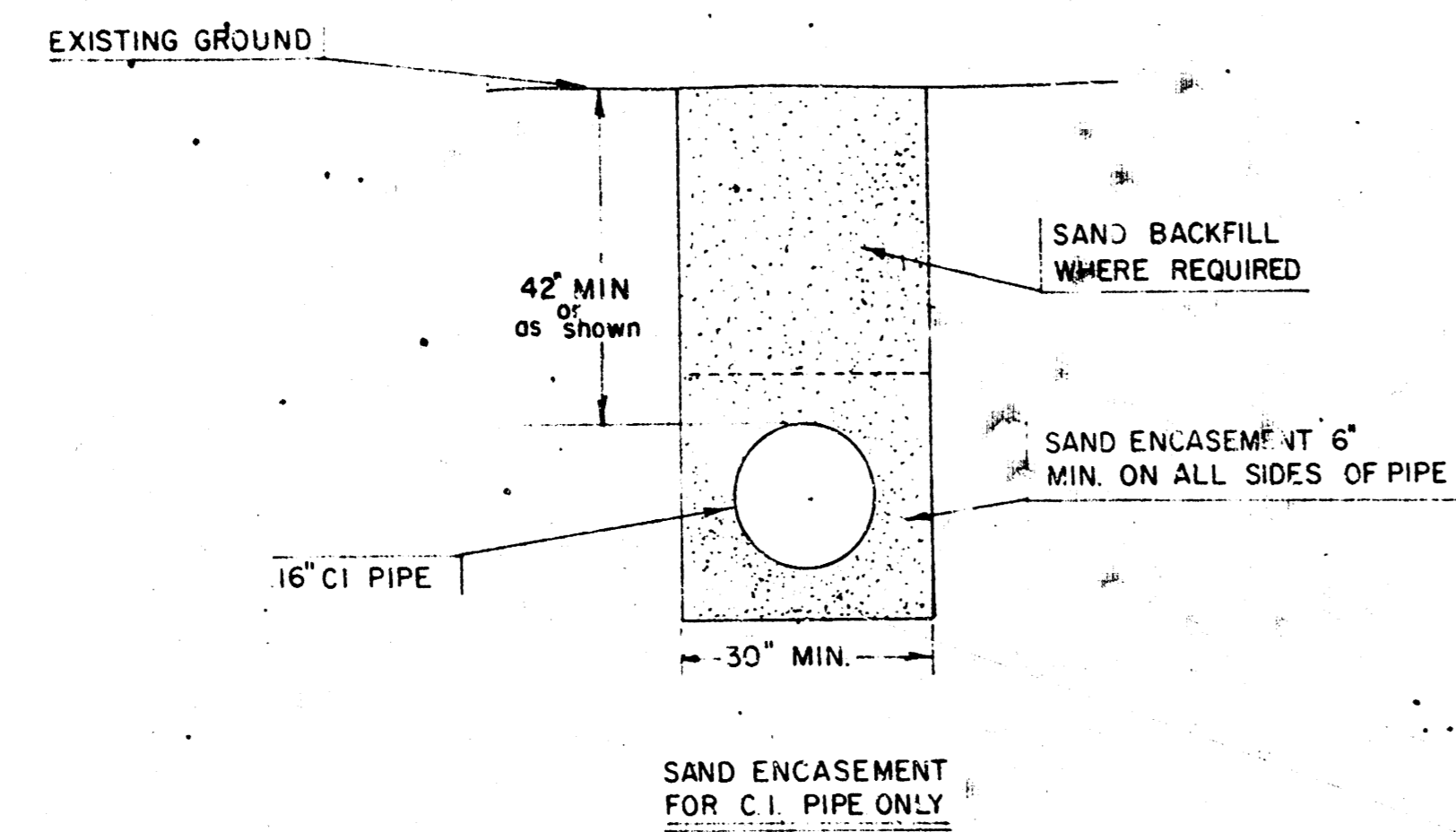
**PLAN**  
 DRAWN BY: [ ]  
 CHECKED BY: [ ]  
 DATE: [ ]

**PROFILE**  
 DRAWN BY: [ ]  
 CHECKED BY: [ ]  
 DATE: [ ]

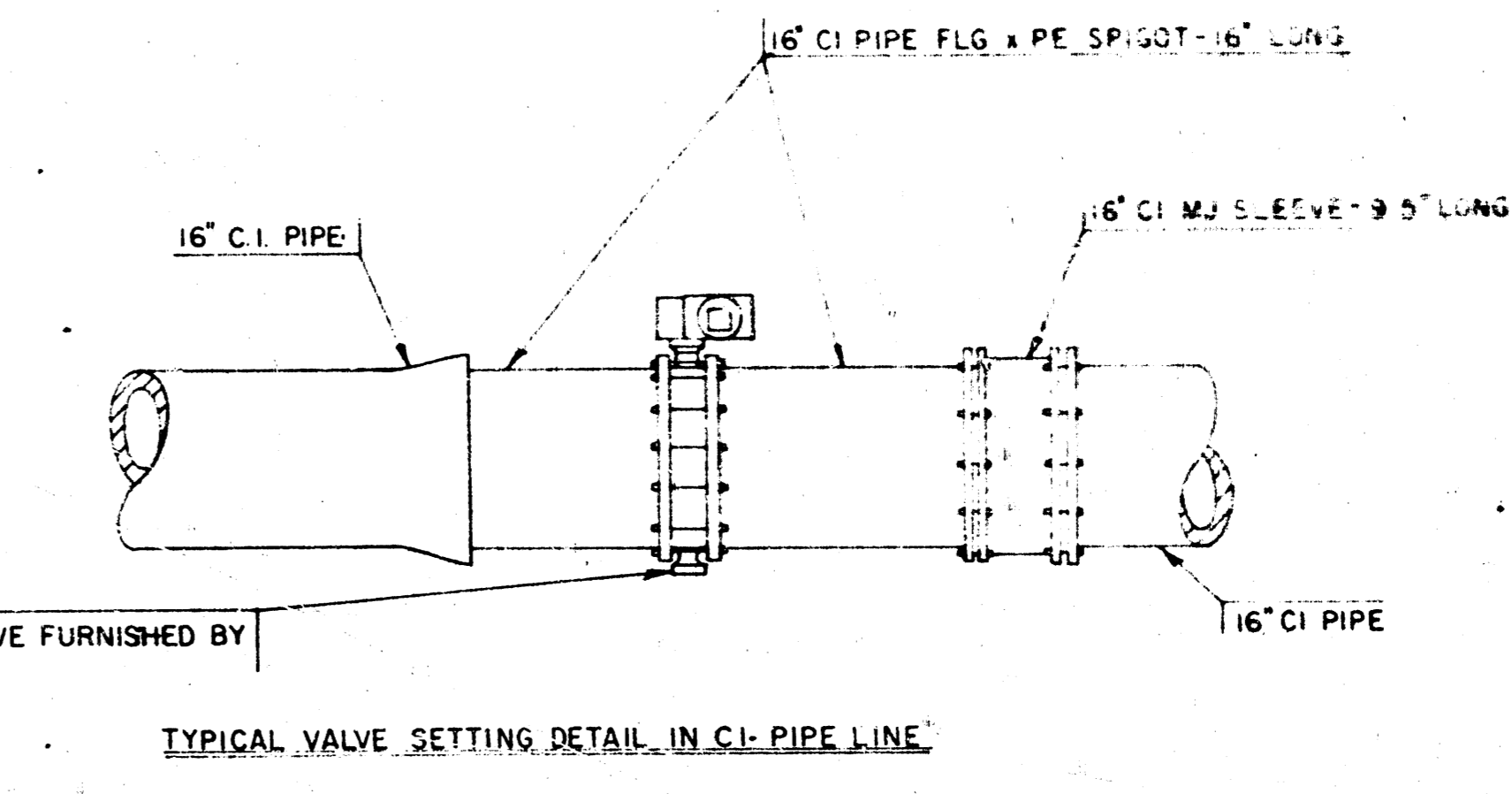
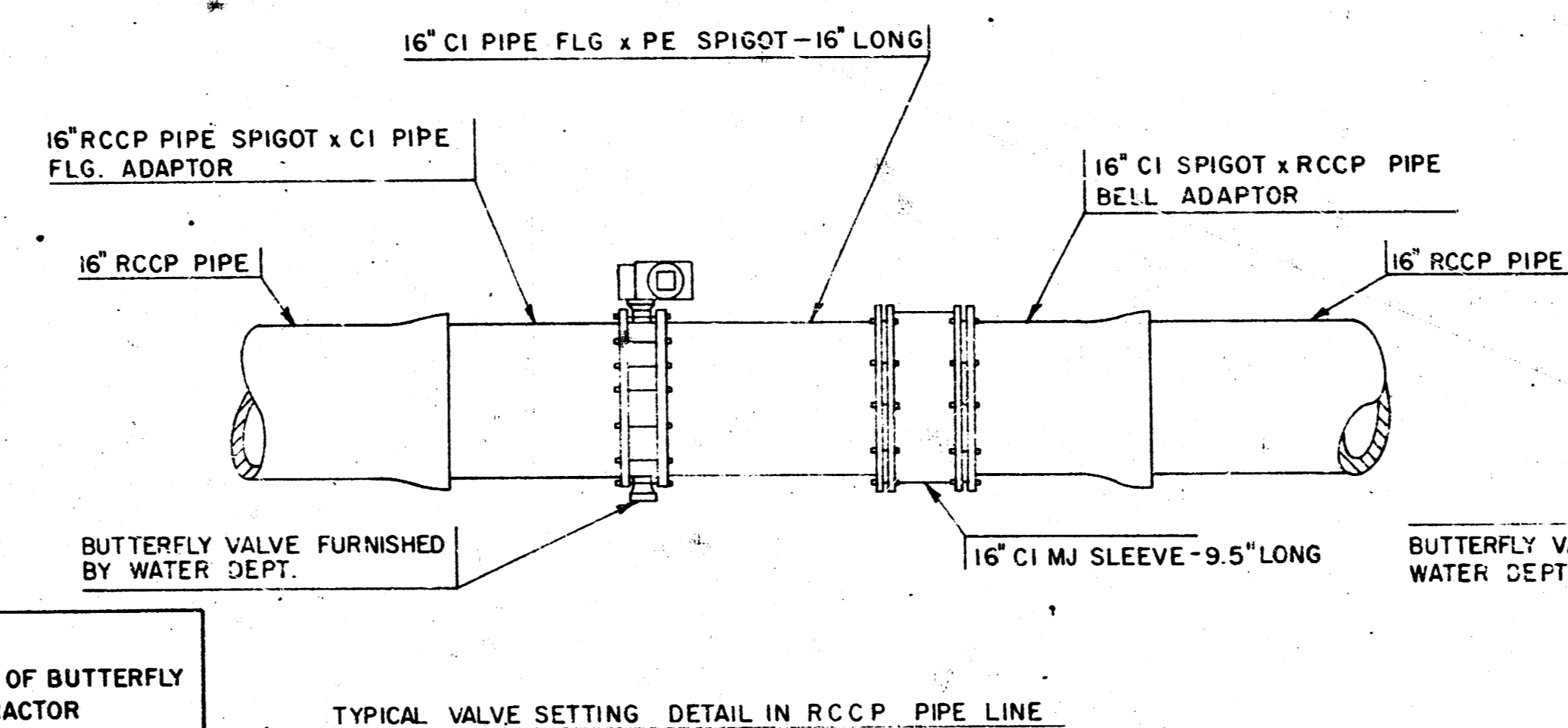
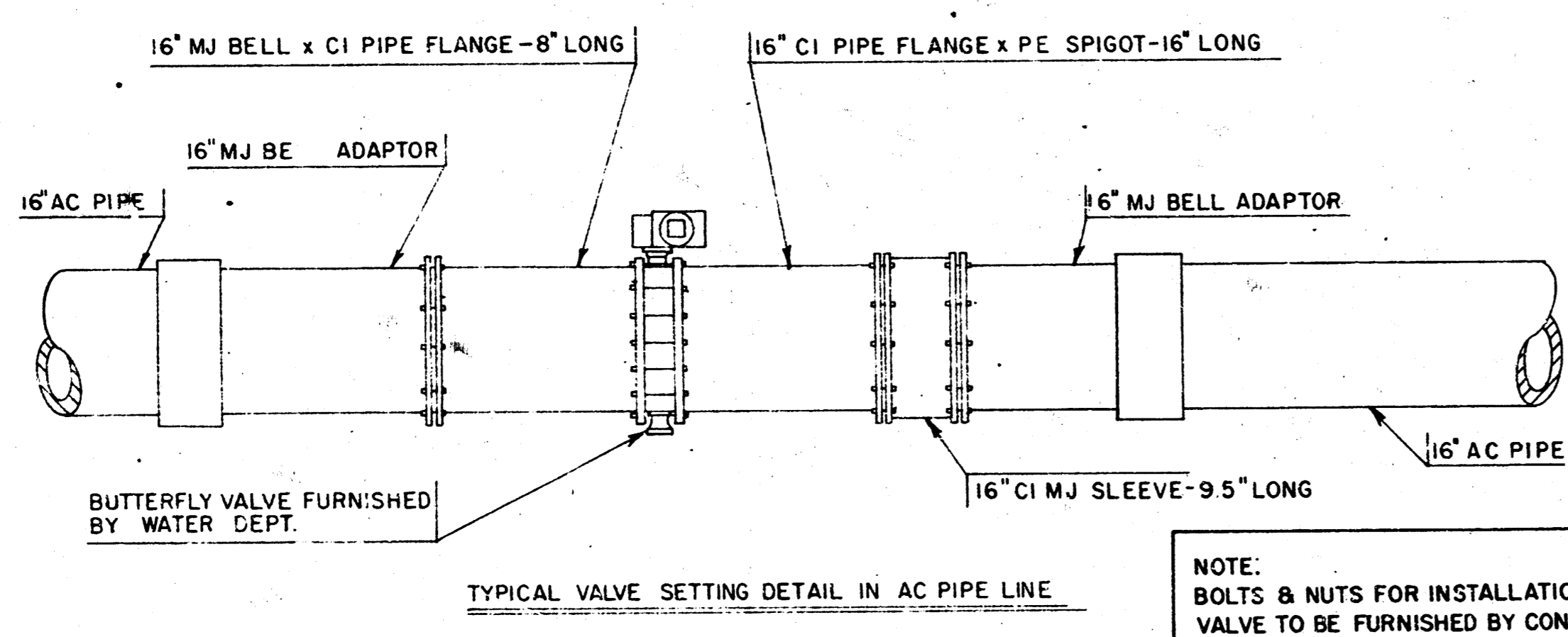
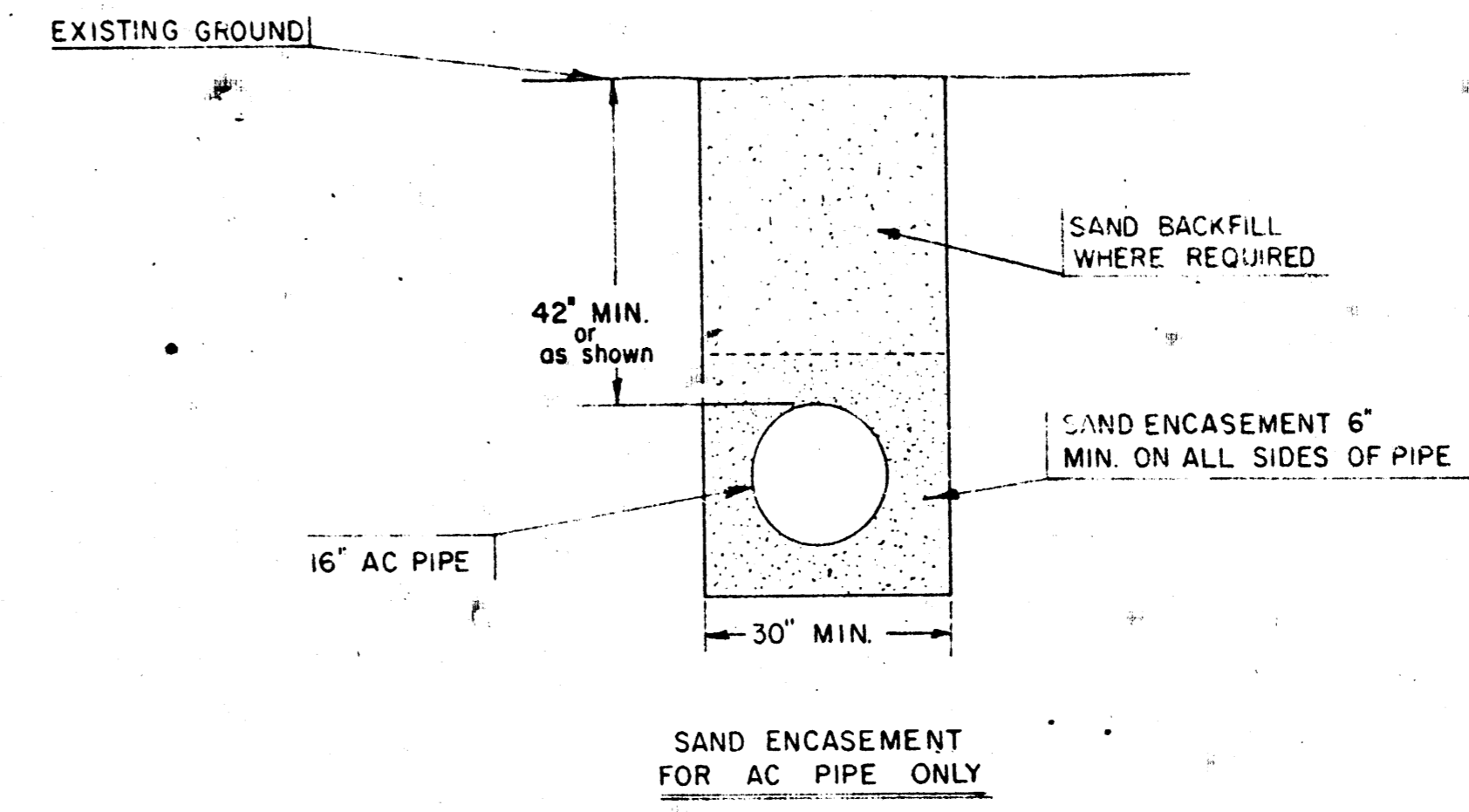




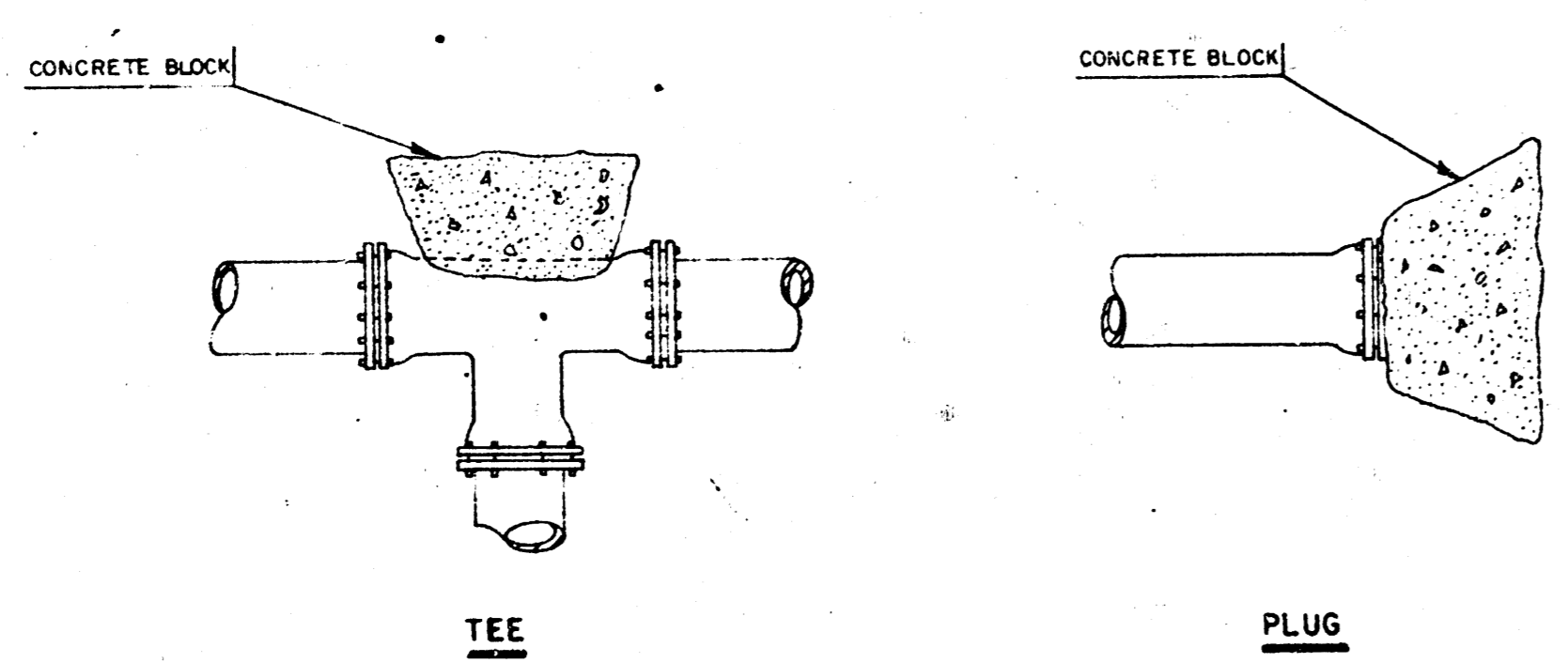
WICHITA WATER DEPARTMENT	
CITY OF WICHITA	
DIVISION OF DESIGN AND PLANNING	
SCALE: 1" = 150'	APPROVED BY: _____
DATE: 9-12-65	REVIEWED BY: _____
BENEFIT DISTRICT NO 71-65	
W.O. W-4506	DRAWING NUMBER: 3 OF 4



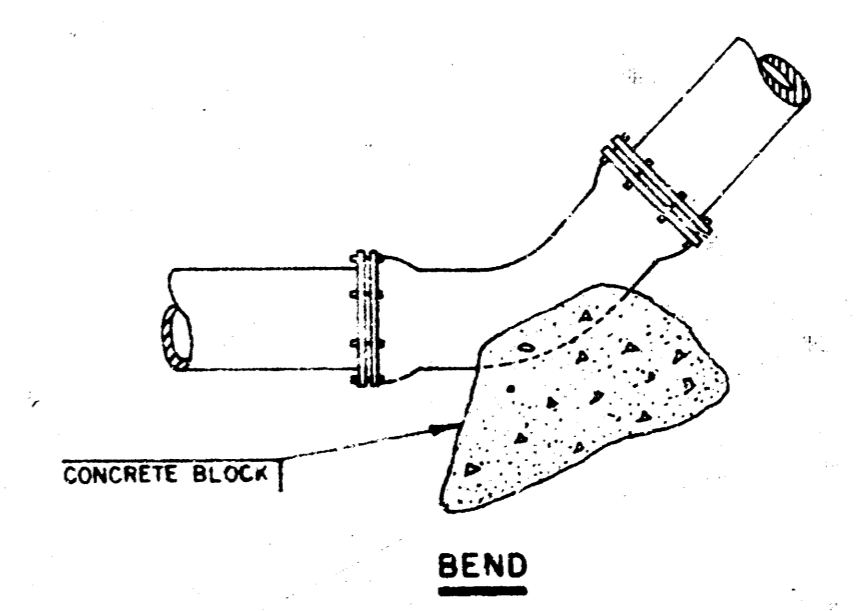
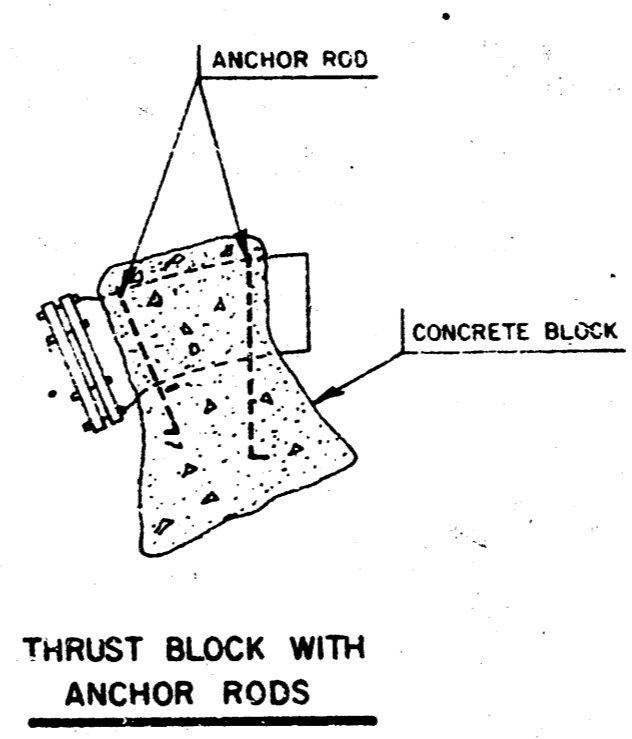
**Note:**  
Contractor to excavate and prepare tap hole, Water Dept. will make tap on existing main excavating and backfill at no extra cost.



**NOTE:**  
BOLTS & NUTS FOR INSTALLATION OF BUTTERFLY VALVE TO BE FURNISHED BY CONTRACTOR



PIPE SIZE	THRUST AT FITTINGS IN TONS - AT 150' / IN <sup>2</sup> P.					
	PLUG	90°	45°	22 1/2°	11 1/4°	TEE
6"	2.12	2.968	1.613	.827	.416	2.12
8"	3.76	5.33	2.88	1.470	.740	3.76
12"	8.48	11.99	6.49	3.209	1.66	8.48
16"	15.07	21.32	11.54	5.88	2.96	15.07



TYPICAL THRUST BLOCKS

CITY OF WICHITA WATER DEPARTMENT DESIGN AND PLANNING DIVISION		
SCALE: NONE	APPROVED BY:	DRAWN BY: T.W.F.
DATE: 11-2-64		REVISED: 11-11-65
DETAIL SKETCHES		
BENEFIT DISTRICT NO. 71-65	DRAWING NUMBER W-4506	