

WICHITA, KANSAS

PAVEMENT REMOVAL AND RECONSTRUCTION IN CONNECTION WITH RAILROAD CROSSING REMOVAL

SHEET NO.	INDEX TO DRAWINGS DESCRIPTION
1	COVER SHEET
2	PAVING PLAN



LOCATION MAP
SCALE: 1" = 3000' (APPROXIMATE)

PROJECT LOCATION

CITY OF WICHITA PROJECT NUMBER 472-76-286-88200-000-000-001
MOSLEY AND FIRST STREET
RAILROAD COMPANY - BURLINGTON NORTHERN

1. TWO LANES OF THROUGH TRAFFIC SHALL BE MAINTAINED DURING REMOVAL OF EXISTING PAVEMENT AND TRACKS AND RECONSTRUCTION OF NEW PAVEMENT UNLESS THE CITY ELECTS TO NOT REQUIRE SUCH THROUGH TRAFFIC TO BE CARRIED DURING CONSTRUCTION. CONSTRUCTION SIGNING AND CONSTRUCTION OF TEMPORARY PAVEMENT REQUIRED TO FACILITATE MAINTENANCE OF SUCH THROUGH TRAFFIC WILL BE THE RESPONSIBILITY OF THE PAVING CONTRACTOR.
2. UTILITY SERVICE LINES, POWER POLES, VALVE BOXES, METERS, ETCETERA, ARE TO BE ADJUSTED AS NECESSARY BY OTHERS PRIOR TO CONSTRUCTION UNLESS THE PLANS SPECIFICALLY CALL FOR THEIR ADJUSTMENT BY THE CONTRACTOR. EXISTING UTILITIES AND THEIR LOCATION, AS SHOWN ON THE PLANS, REPRESENT THE BEST INFORMATION OBTAINABLE FOR DESIGN. THE CONTRACTOR WILL BE REQUIRED TO WORK AROUND EXISTING UTILITIES WITHIN THE RIGHT-OF-WAY WHICH DO NOT CONFLICT WITH PROPOSED CONSTRUCTION.
3. A SAW CUT OF AT LEAST ONE-HALF THE DEPTH OF EXISTING SURFACE COURSES OR ONE-FOURTH THE DEPTH OF THE EXISTING TOTAL PAVEMENT THICKNESS SHALL BE PROVIDED AT LOCATIONS WHERE PROPOSED CONSTRUCTION ABUTS AN EXISTING SURFACE COURSE OR PAVEMENT FOR WHICH PARTIAL REMOVAL OF THAT SURFACE OR PAVEMENT IS REQUIRED. SAWED JOINT TO FACILITATE REMOVAL WITHIN THREE (3) FEET OF EXISTING JOINTS WILL NOT BE PERMITTED AND FOR SUCH INSTANCES THE LIMITS OF REMOVAL SHALL EXTEND TO THE EXISTING JOINT. SUCH SAW CUTS WILL NOT BE PAID FOR DIRECTLY AND THIS COST SHALL BE CONSIDERED AS SUBSIDIARY TO THE REMOVAL OF THE SURFACE OR PAVEMENT.
4. RUBBLE FROM THE REMOVAL OF MISCELLANEOUS STRUCTURES AND EXCESS EXCAVATION WHICH IS TO BE WASTED SHALL BE DISPOSED OF ON SITES TO BE PROVIDED BY THE CONTRACTOR. THESE SITES SHALL BE APPROVED BY THE ENGINEER AS TO SUITABILITY, APPEARANCE AND SITE LOCATION. LOCATIONS THAT, IN THE OPINION OF THE ENGINEER, WILL LEAVE AN UNSIGHTLY APPEARANCE WILL NOT BE APPROVED.
5. THE CITY OF WICHITA'S SEWER MAINTENANCE DIVISION OF THE DEPARTMENT OF WATER AND WATER POLLUTION CONTROL HAS TELEVIEWED SEWERS WITHIN THE LIMITS OF THE PROJECT AND HAVE FOUND NO DEFECTS REQUIRING REPAIR. THE DIVISION SHALL BE NOTIFIED AND AFFORDED THE OPPORTUNITY TO RETELEVISE SEWER LINES AFTER SUBGRADE WORK HAS BEEN COMPLETED AND PRIOR TO PAVEMENT CONSTRUCTION TO DETERMINE IF SUCH SEWER LINES HAVE BEEN DAMAGED BY THE CONTRACTOR'S OPERATIONS. DAMAGED SEWER LINES WILL BE REPAIRED BY THE CONTRACTOR, AS DIRECTED BY THE ENGINEER, AT THE CONTRACTOR'S EXPENSE. TELEVISION LOGS ARE AVAILABLE FOR INSPECTION BY THE CONTRACTOR DURING NORMAL OFFICE HOURS AT THE SEWER MAINTENANCE DIVISION'S OFFICE AT CITY HALL.
6. CONCRETE JOINTING PATTERNS AND DIMENSIONS ARE APPROXIMATE. ENGINEER SHALL FIELD ADJUST AS REQUIRED TO MATCH EXISTING AND ADJACENT CONDITIONS.
7. REPLACE ALL EXISTING ASPHALT FILLED MANHOLE LIDS IN AREAS TO BE PAVED WITH THE STANDARD CITY OF WICHITA MANHOLE FRAME AND COVER.


CITY OF WICHITA, KANSAS
DEPT. OF PUBLIC WORKS, ENG. DIV.
M. E. LINDEBAK - CITY ENGINEER

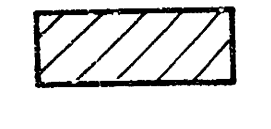


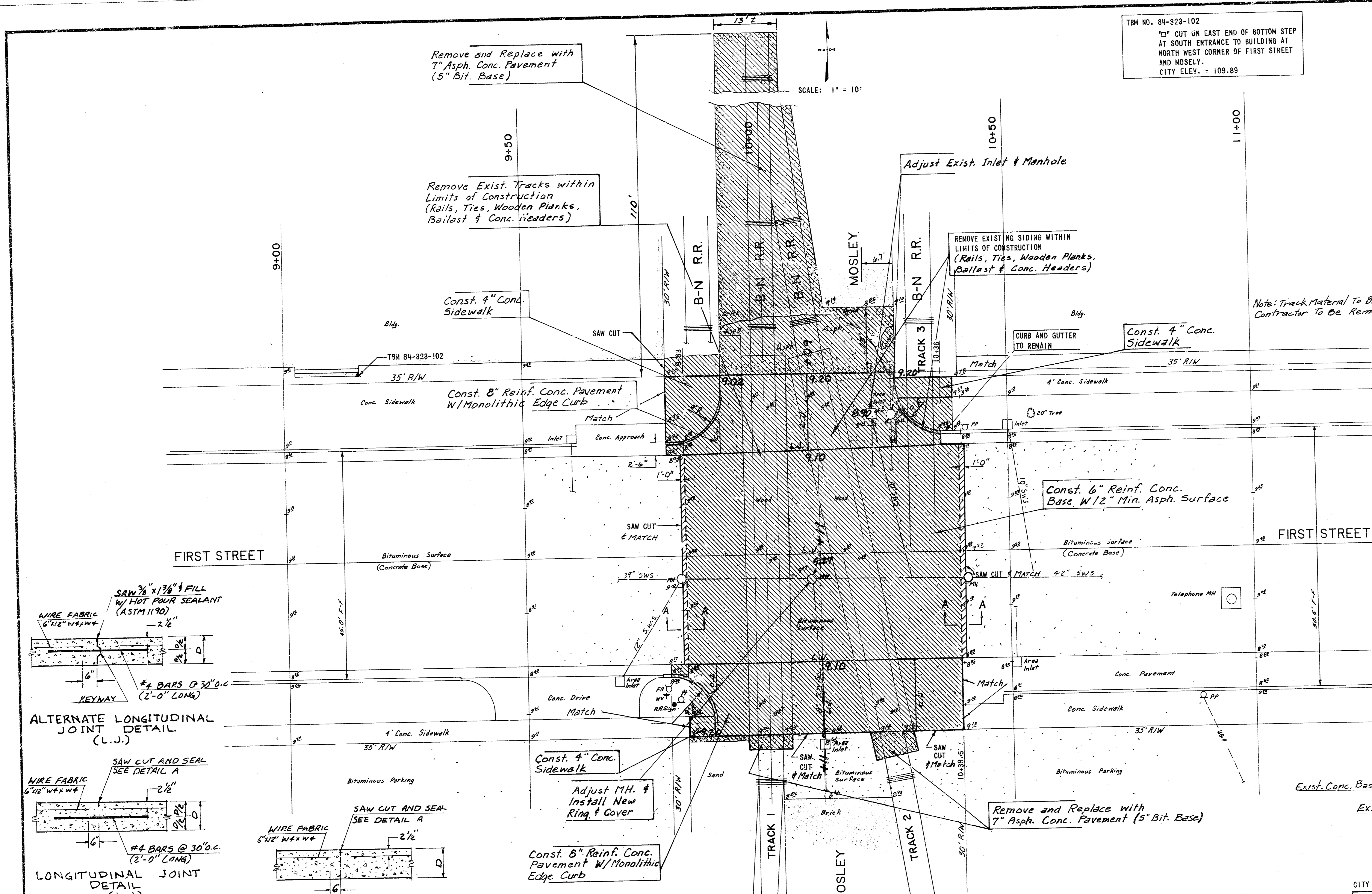
TBM NO. 84-323-102
 "1" CUT ON EAST END OF BOTTOM STEP
 AT SOUTH ENTRANCE TO BUILDING AT
 NORTH WEST CORNER OF FIRST STREET
 AND MOSELY.
 CITY ELEV. = 109.89

LEGEND

SYMBOL DESCRIPTION

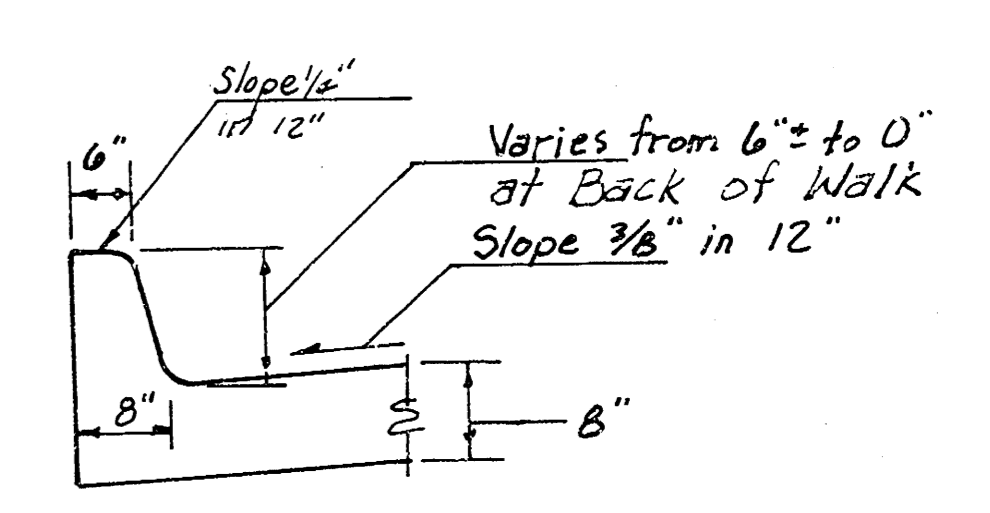
 REMOVE EXISTING CONCRETE P.V.M.T., CURB AND GUTTER, SIDEWALK AND BITUMINOUS P.V.M.T. AND REPLACE AS SHOWN. (BY PAVING CONTRACTOR)

 REMOVE & REPLACE EXIST. ASPH. SURFACE

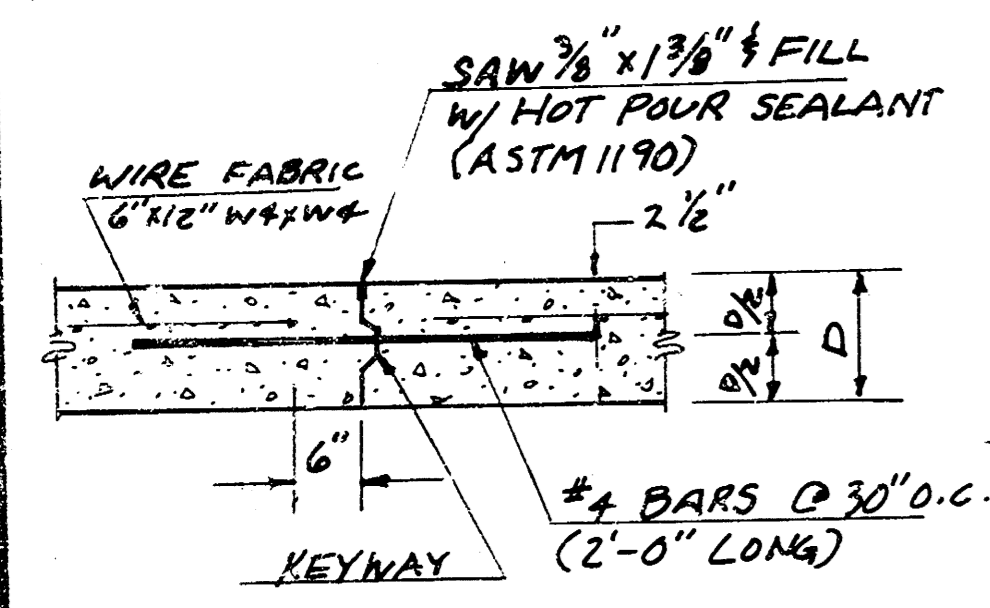


Note: Track Material To Become Property of Contractor To Be Removed From Site.

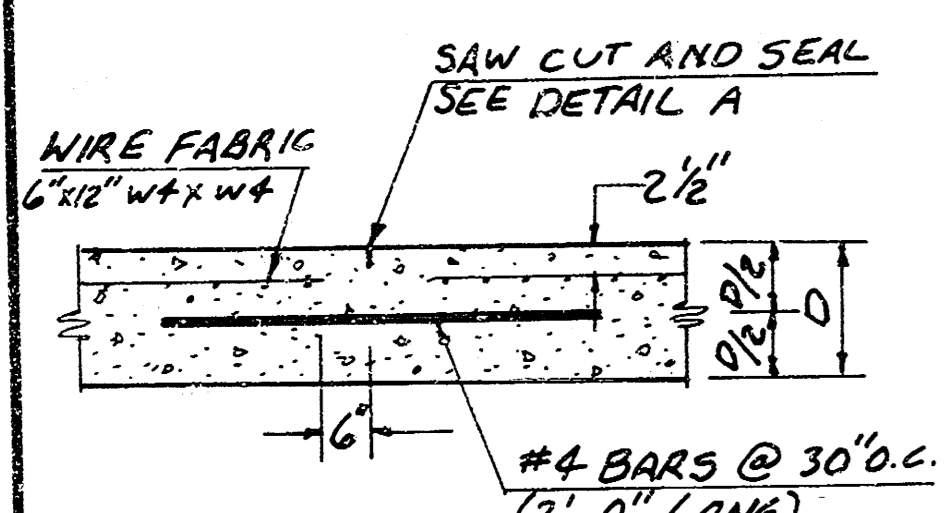
NOTE: Full Height Curb shape to match Existing Curb at Juncture.



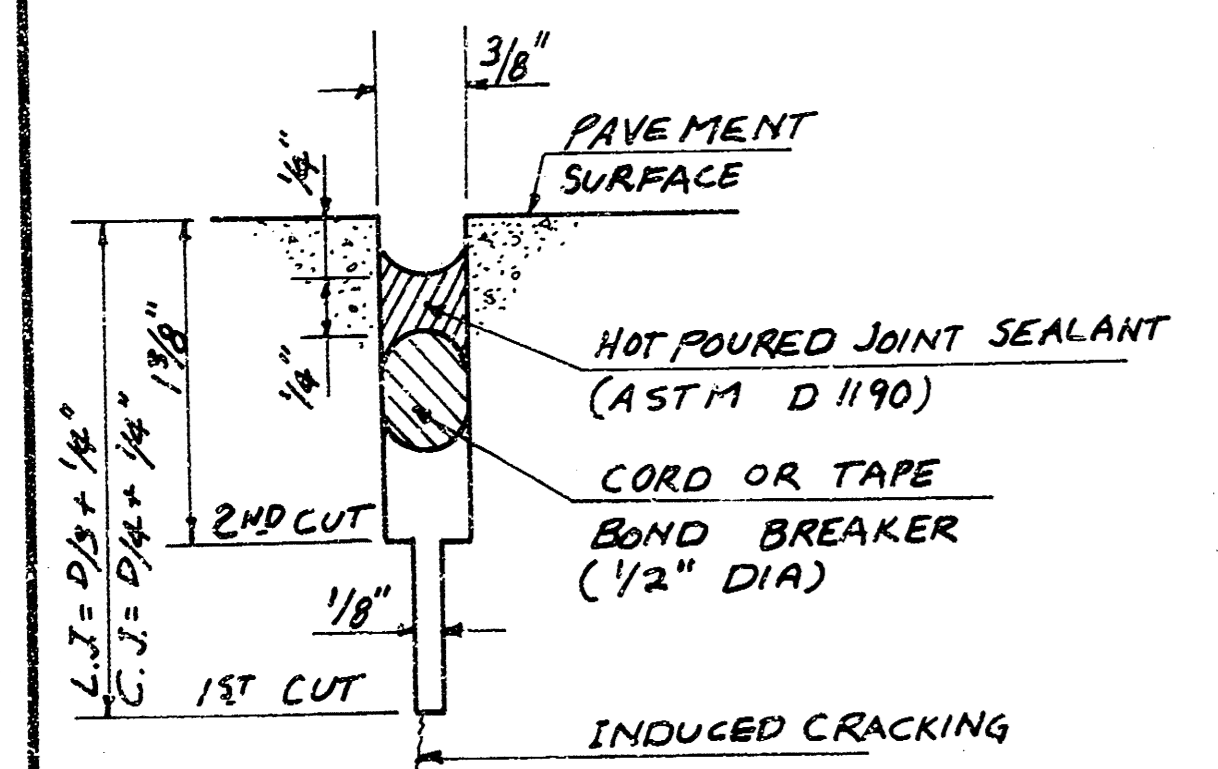
MONOLITHIC EDGE CURB
 not to Scale



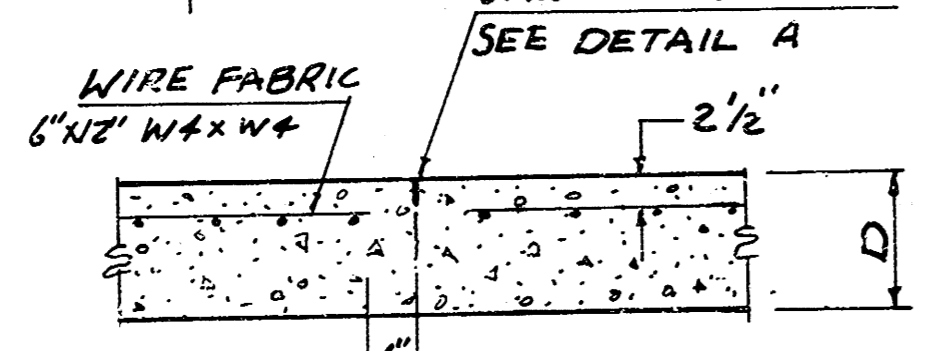
ALTERNATE LONGITUDINAL JOINT DETAIL (L.J.)



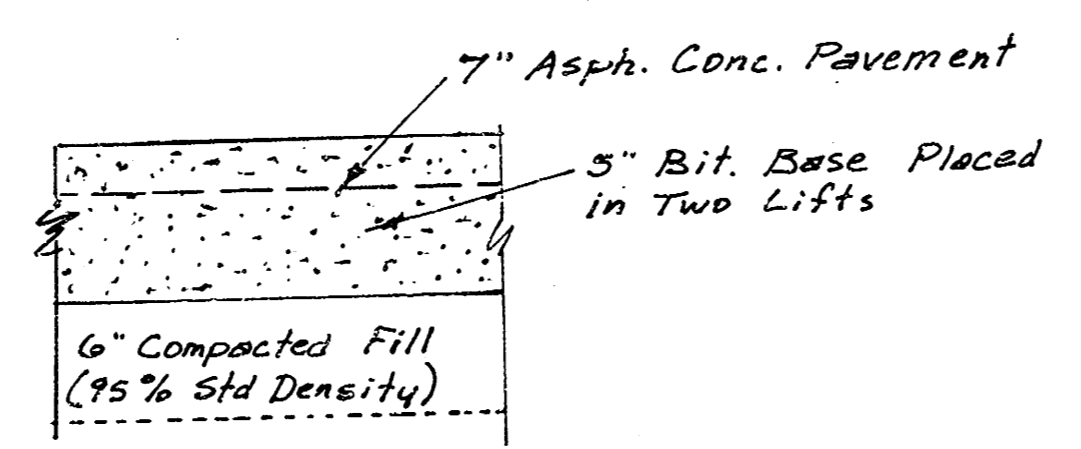
LONGITUDINAL JOINT DETAIL (L.J.)



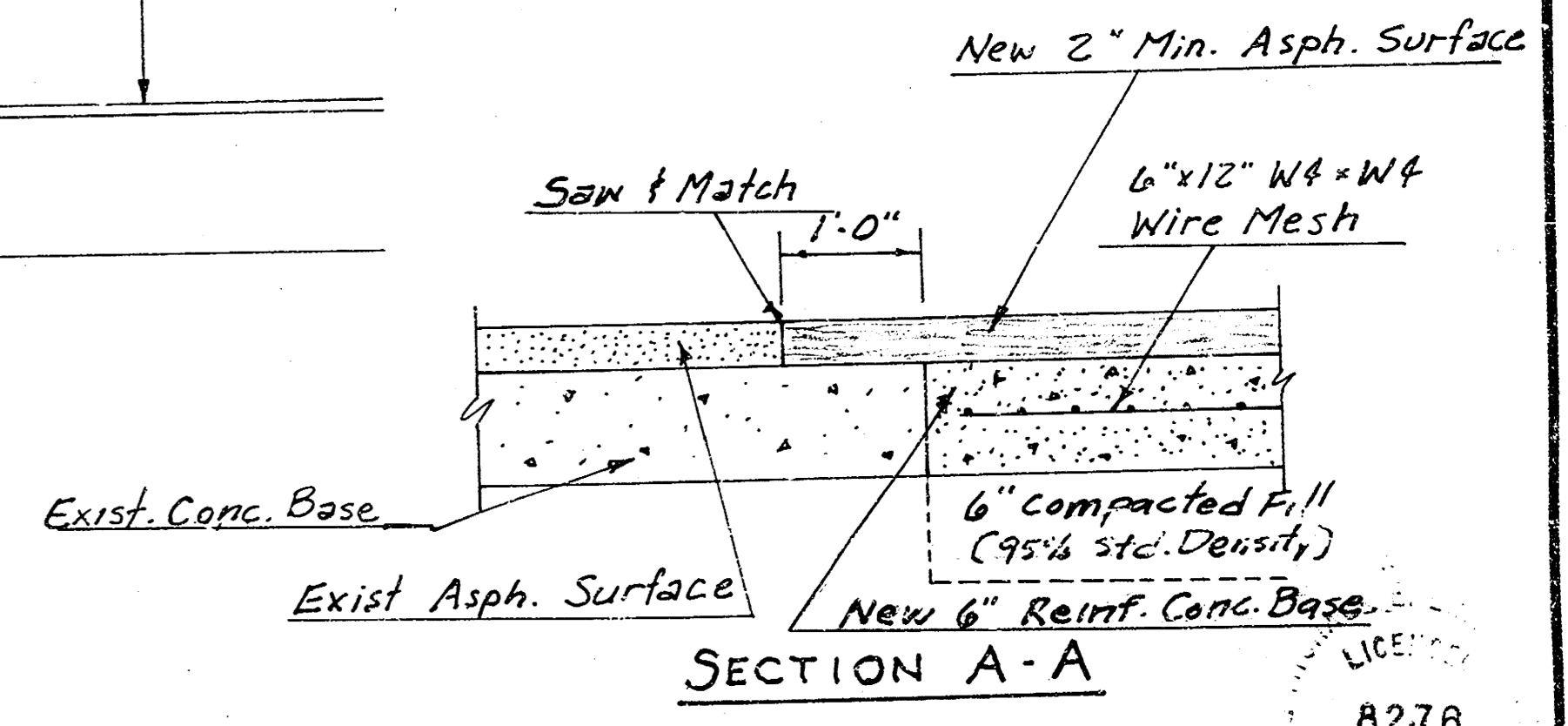
DETAIL A



CONTRACTION JOINT DETAIL (C.J.)



ASPHALT PAVEMENT SECTION



SECTION A-A

CITY OF WICHITA PROJECT NO. 472-76-284-88200-000-000-001

WICHITA, KANSAS
 RAILROAD CROSSING REMOVAL
 MOSLEY AND FIRST STREET
 PAVING PLAN

DESIGN CM	DRAWN CM	DATE: DEC. 1984
CITY OF WICHITA, KANSAS DEPT. OF PUBLIC WORKS, ENG. DIV. M. E. LINDEBAK - CITY ENGINEER		FILE NO. 84-323
		SHEET NO. 2 OF 2

SURVEY: 11-7-84

REVISION	DATE	BY

