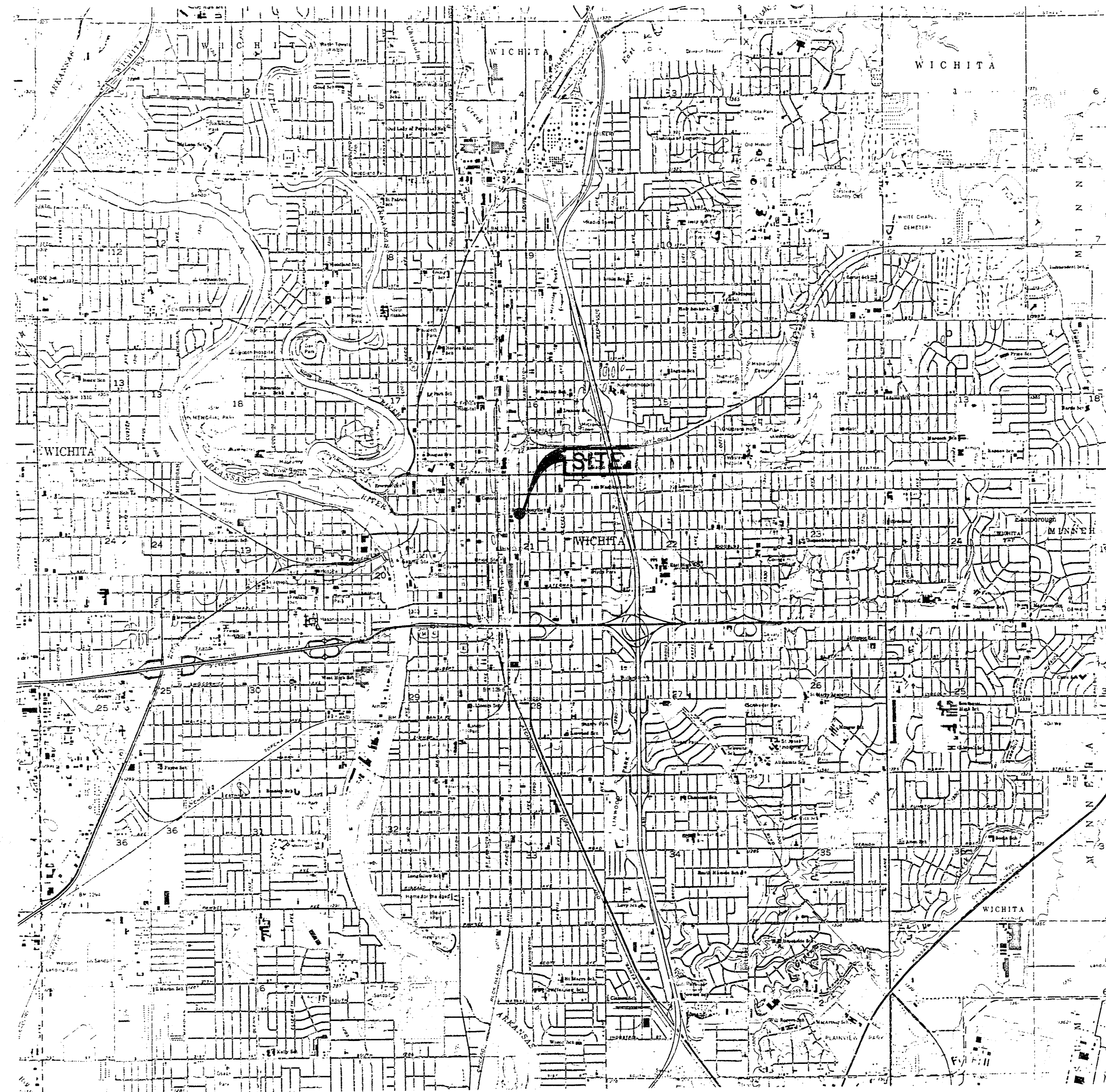


# WICHITA, KANSAS

## PAVEMENT REMOVAL AND RECONSTRUCTION IN CONNECTION WITH RAILROAD CROSSING REMOVAL

### INDEX TO DRAWINGS

SHEET NO.	DESCRIPTION
1	COVER SHEET
2	PAVING PLAN



**LOCATION MAP**  
SCALE: 1" = 3000' (APPROXIMATE)

### PROJECT LOCATION

CITY OF WICHITA PROJECT NUMBER 472-76-245-81330-000-001  
MOSLEY AND SECOND STREET  
RAILROAD COMPANY - BURLINGTON NORTHERN

1. TWO LANES OF THROUGH TRAFFIC SHALL BE MAINTAINED DURING REMOVAL OF EXISTING PAVEMENT AND TRACKS AND RECONSTRUCTION OF NEW PAVEMENT UNLESS THE CITY ELECTS TO NOT REQUIRE SUCH THROUGH TRAFFIC TO BE CARRIED DURING CONSTRUCTION. CONSTRUCTION SIGNING AND CONSTRUCTION OF TEMPORARY PAVEMENT REQUIRED TO FACILITATE MAINTENANCE OF SUCH THROUGH TRAFFIC WILL BE THE RESPONSIBILITY OF THE PAVING CONTRACTOR.
2. UTILITY SERVICE LINES, POWER POLES, VALVE BOXES, METERS, ETCETERA, ARE TO BE ADJUSTED AS NECESSARY BY OTHERS PRIOR TO CONSTRUCTION UNLESS THE PLANS SPECIFICALLY CALL FOR THEIR ADJUSTMENT BY THE CONTRACTOR. EXISTING UTILITIES AND THEIR LOCATION, AS SHOWN ON THE PLANS, REPRESENT THE BEST INFORMATION OBTAINABLE FOR DESIGN. THE CONTRACTOR WILL BE REQUIRED TO WORK AROUND EXISTING UTILITIES WITHIN THE RIGHT-OF-WAY WHICH DO NOT CONFLICT WITH PROPOSED CONSTRUCTION.
3. A SAW CUT OF AT LEAST ONE-HALF THE DEPTH OF EXISTING SURFACE COURSES OR ONE-FOURTH THE DEPTH OF THE EXISTING TOTAL PAVEMENT THICKNESS SHALL BE PROVIDED AT LOCATIONS WHERE PROPOSED CONSTRUCTION ABUTS AN EXISTING SURFACE COURSE OR PAVEMENT FOR WHICH PARTIAL REMOVAL OF THAT SURFACE OR PAVEMENT IS REQUIRED. SAWED JOINT TO FACILITATE REMOVAL WITHIN THREE (3) FEET OF EXISTING JOINTS WILL NOT BE PERMITTED AND FOR SUCH INSTANCES THE LIMITS OF REMOVAL SHALL EXTEND TO THE EXISTING JOINT. SUCH SAW CUTS WILL NOT BE PAID FOR DIRECTLY AND THIS COST SHALL BE CONSIDERED AS SUBSIDIARY TO THE REMOVAL OF THE SURFACE OR PAVEMENT.
4. RUBBLE FROM THE REMOVAL OF MISCELLANEOUS STRUCTURES AND EXCESS EXCAVATION WHICH IS TO BE WASTED SHALL BE DISPOSED OF ON SITES TO BE PROVIDED BY THE CONTRACTOR. THESE SITES SHALL BE APPROVED BY THE ENGINEER AS TO SUITABILITY, APPEARANCE AND SITE LOCATION. LOCATIONS THAT, IN THE OPINION OF THE ENGINEER, WILL LEAVE AN UNSTIGHTLY APPEARANCE WILL NOT BE APPROVED.
5. CONCRETE JOINTING PATTERNS AND DIMENSIONS ARE APPROXIMATE. ENGINEER SHALL FIELD ADJUST AS REQUIRED TO MATCH EXISTING AND ADJACENT CONDITIONS.

8276

CITY OF WICHITA, KANSAS  
DEPT. OF PUBLIC WORKS, ENG. DIV.  
M. E. LINDEBAK - CITY ENGINEER

